



DE VALK
YACHT BROKERS



SADLER 32



DE VALK
YACHT BROKERS

SADLER 32

BROKER'S COMMENTS

Sadler 32 is a great sailing yacht & very easy to sail short handed. She has been designed by David Sadler to be an upgrade to his Contessa 32 design. The original engine of this yacht was replaced in 2008 & overhauled in 2023. The yacht has had full anti-osmosis preventative treatment on her hull in 2018 & new standing rigging in March 2024. Many improvements done by present owner. Sadler 32 is ready to sail away to anywhere.

Sofia Iliia-Salvanou

SPECIFICATIONS

Dimensions	9.78 x 3.20 x 1.45 (m)	Builder	SADLER YACHTS
Built	1983	Cabins	2
Material	GRP	Berths	5
Engine(s)	1 x WESTERBECKE 38B diesel	Hp/Kw	38.00 (hp), 27.97 (kw)
Asking price	€ 36.000 (VAT)	Lying	at sales office

CONTACT

Sales office	De Valk Corfu	Telephone	(+30) 266 111 8095
Address	New Port of Corfu, near Gouvia Marina 490 83 Corfu Greece	E-mail	corfu@devalk.nl

DISCLAIMER

These particulars are given in good faith as supplied but cannot be guaranteed.



GENERAL

Model	SADLER 32
Type	sailing yacht
LOA (m)	9,78
LWL (m)	7,32
Beam (m)	3,20
Draft (m)	1,45
Year built	1983
Builder	SADLER YACHTS
Country	United Kingdom
Designer	DAVID SADLER
Displacement (t)	4,3
Ballast (tonnes)	1,9
Hull material	GRP
Hull colour	blue Light
Keel type	fin keel With rudder on SKEG
Deck material	GRP
Deck finish	non-skid moulded in
Cockpit deck finish	teak
Antifouling (year)	2024
Window material	glass
Deckhatch	yes
Portholes	yes
Fuel tank (litre)	stainless steel 85
Level indicator (fuel tank)	yes
Freshwater tank (litre)	polyethylene 200 Lt
Blackwater tank (litre)	NO
Outside helm position	yes
Tiller	yes
More info on hull	ANTIOSMOSIS PROTECTION TREATMENT in 2018 by previous owner



ACCOMMODATION

Cabins	2
Berths	5
Saloon	yes
Heating	diesel ducted hot air
Chart table	yes
Dinette	yes
Galley	yes
Countertop	yes
Sink	stainless steel
Cooker	calor gas
Fridge	yes
Hot water system	by engine
Water pressure system	electrical
Manual and/or foot pump	yes
Crockery	yes
Owners cabin	double bed
Wardrobe	hanging and shelves
Bathroom	en suite
Toilet	en suite
Toilet system	manual
Wash basin	in the bathroom
Shower	en suite
Guest cabin 1	single bed
Wardrobe	yes
Bathroom	separate
Toilet	separate
Toilet system	manual
Wash basin	in the bathroom
Shower	separate



MACHINERY

No of engines	1
Make	WESTERBECKE
Type	38B
HP	38
kW	27.97
Fuel	diesel
Year installed	2008
Year of overhaul	2023
Maximum speed (kn)	8
Cruising speed (kn)	7
Engine cooling system	freshwater heat exchanger
Shaft seal	yes

NAVIGATION

Compass	yes
Depth sounder	yes
Log	yes
Windset	yes
VHF	yes
Autopilot	NEW installed Aug 2023, RAYMARINE EV-100
GPS	yes
Plotter	yes
Plotter/GPS	yes
Radio receiver	yes
Navigation lights	yes
Searchlight	yes

EQUIPMENT

Fixed windscreen	yes
------------------	-----



Sprayhood	yes
Bimini	yes
Cockpit cushions	yes
Cockpit table	yes
Bathing platform	yes
Boarding ladder	stainless steel
Gangway	yes
Deck shower	yes
Anchor	yes
Anchor 2	AFT
Windlass	electrical
Dinghy	NEW 2023, 1,75 m
Outboard	TOHATSU 4 BHP
Outboard support	yes
Sea railing	wire
Grab rail (superstructure)	wood
Lifejackets	FOR 8 People
Safety harness	yes
Lifebuoy	yes
Danbuoy	yes
Safety lines on deck	yes
Rope cutter	yes
Binocular	yes
Fenders	NEW 2023
Mooring lines	Plus floating mooring line and spare mooring lines
Tools	yes
Radio	yes
iPod connection	yes
Surround Sound System	yes
Cockpit speakers	yes
Speakers in salon	yes
Clock - barometer	yes



Fire extinguisher	yes
Latest extinguisher survey	MAY 2024

RIGGING

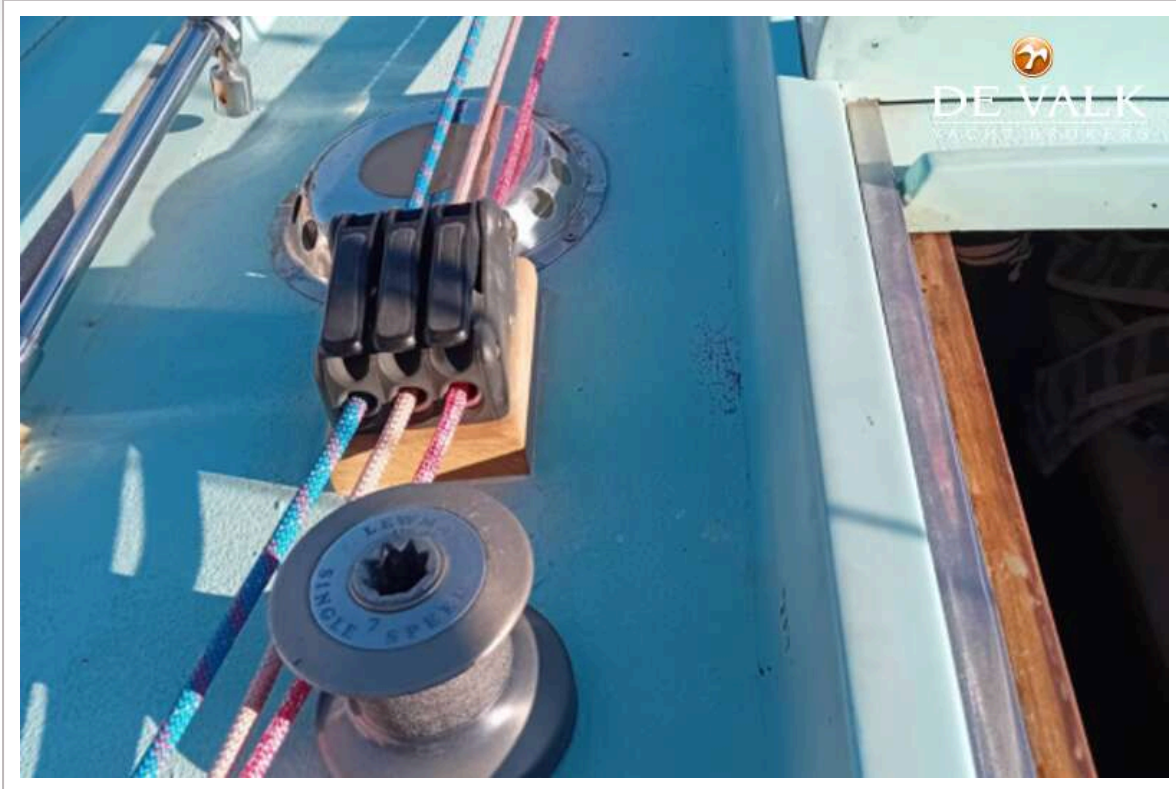
Rigging	sloop
Standing rigging	NEW replaced March 2024
Material mast	aluminium
Mainsail	10 years old in very good condition, plus 1 spare main
Mainsail cover	yes
Genoa	FURLING, 10 Years old in very good condition, plus 1 spare Genoa
Spinnaker	yes
A-symmetric spi	yes
Reefing System	quick-one-line-reefing
Boomvang	tackle
Extra info	4 self tailing winches (2 Harken + 2 Bariert)



SADLER 32



SADLER 32

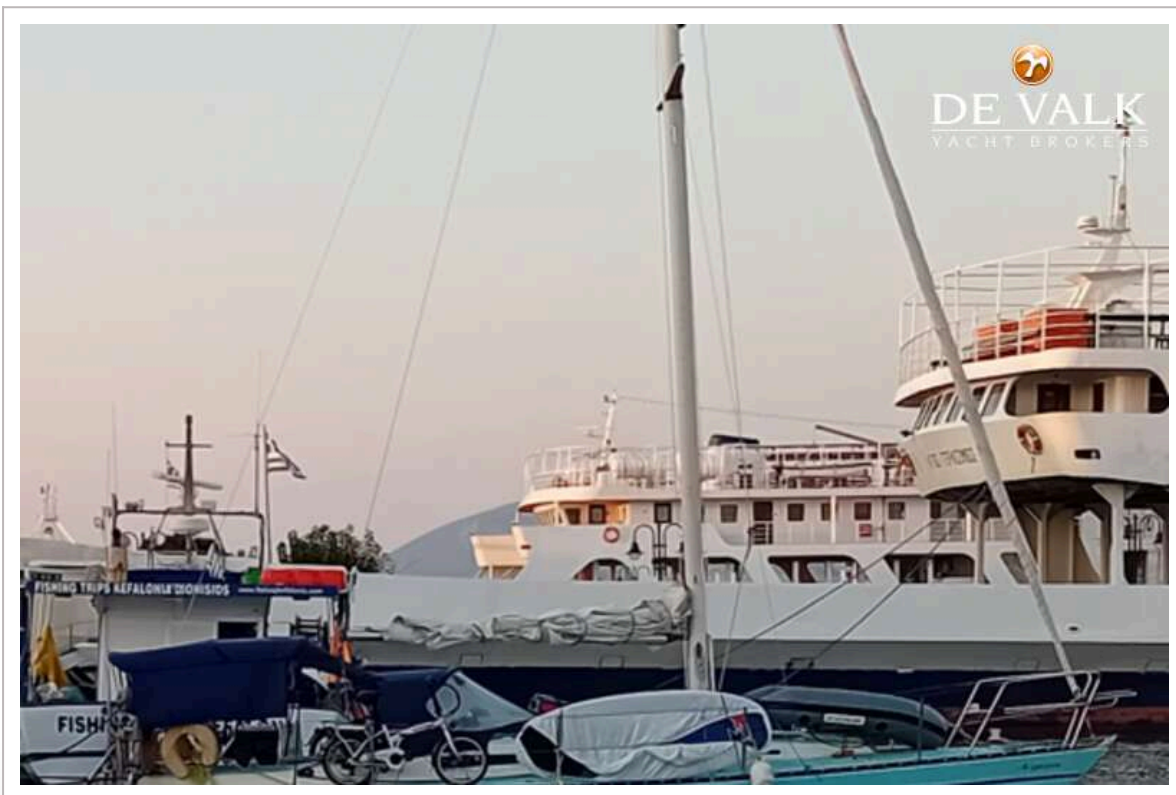




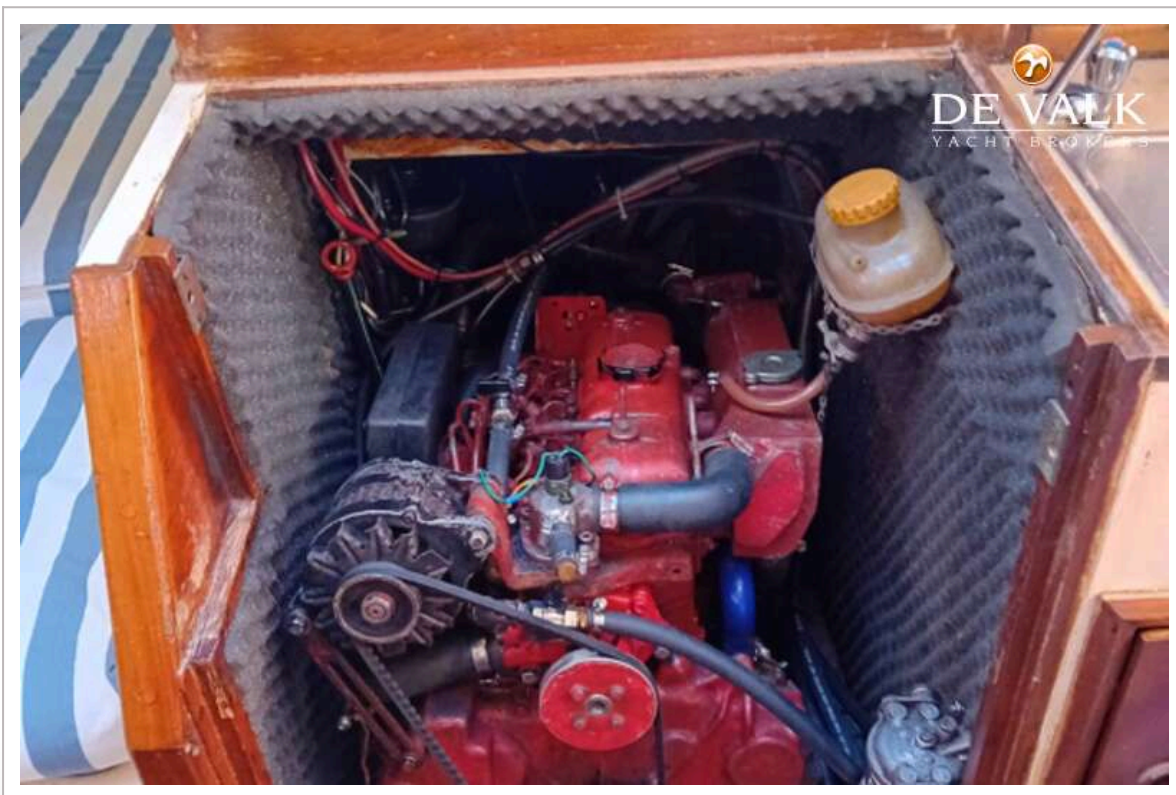
SADLER 32

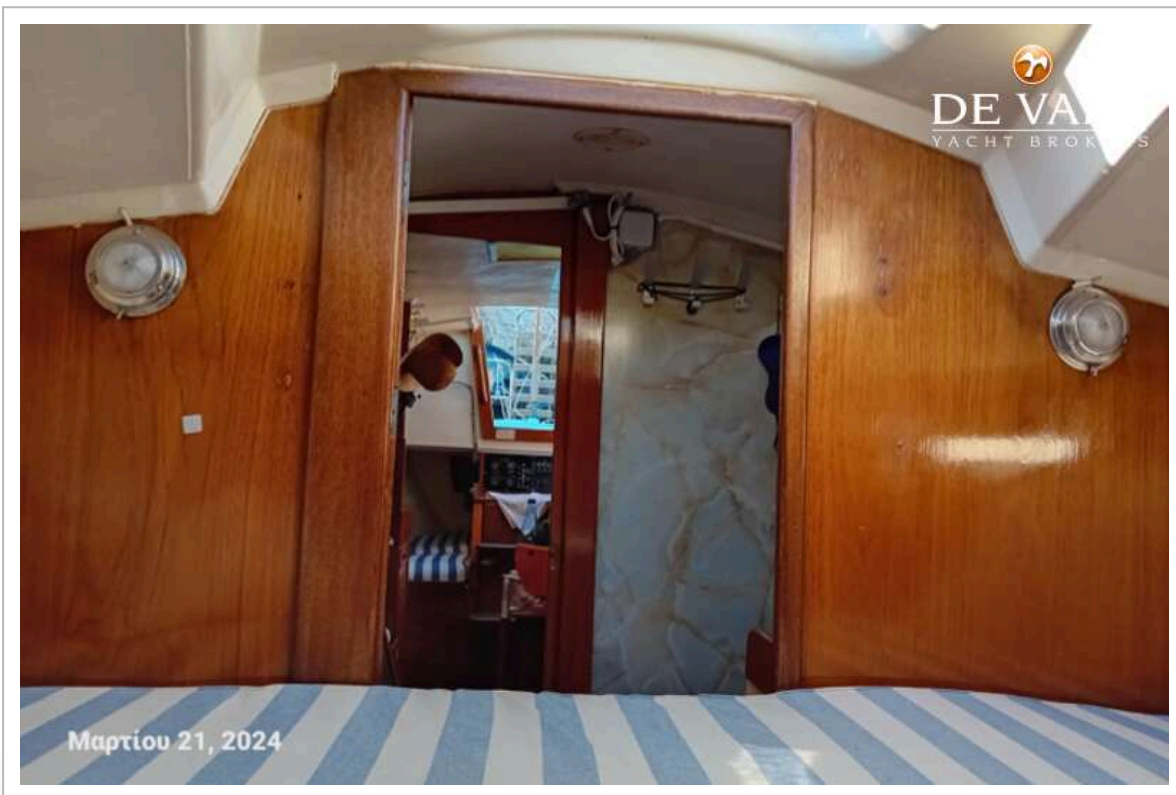












SADLER 32



SADLER 32



SADLER 32



SADLER 32

