



DE VALK  
YACHT BROKERS



## PRESIDENT 43



DE VALK  
YACHT BROKERS

# PRESIDENT 43

## BROKER'S COMMENTS

Are you ready to embark on your next adventure or settle into a cozy, floating home? This 1992 President 43 Double Cabin, British Registered, could be the perfect fit. She is a semi displacement Trawler Yacht and was built and complies with Norske Veritas certification standards. Ideal for both seasoned boaters and those new to the liveaboard lifestyle, it offers reliable Caterpillar diesel V8 engines, a spacious double-cabin layout, and a meticulously cared-for interior. Whether you're cruising or planning to live on the water, this boat has everything you need for comfort and peace of mind.

*Oliver Stehula*

## SPECIFICATIONS

<b>Dimensions</b>	13.03 x 4.60 x 2.40 (m)	<b>Builder</b>	Horizon Yachts
<b>Built</b>	1992	<b>Cabins</b>	2
<b>Material</b>	GRP	<b>Berths</b>	4
<b>Engine(s)</b>	2 x Caterpillar 3208 diesel	<b>Hp/Kw</b>	2 x 210.00 (hp), 154.56 (kw)
<b>Asking price</b>	€ 165.000 (VAT Paid)	<b>Lying</b>	at sales office

## CONTACT

<b>Sales office</b>	De Valk Palma	<b>Telephone</b>	+34 971 402 911
<b>Address</b>	Port. Cala Nova, Avda. Joan Miro, 327 07015 Palma de Mallorca Spain	<b>E-mail</b>	palma@devalk.nl

## DISCLAIMER

These particulars are given in good faith as supplied but cannot be guaranteed.



# PRESIDENT 43

## GENERAL

Model	PRESIDENT 43
Type	motor yacht
LOA (m)	13,03
Beam (m)	4,60
Draft (m)	2,40
Year built	1992
Builder	Horizon Yachts
Country	Taiwan
Displacement (t)	25,4
Hull material	GRP
Flybridge	yes
Fuel tank (litre)	1600
Freshwater tank (litre)	450
Wheel steering	hydraulic
Inside helm position	yes

## ACCOMMODATION

Cabins	2
Berths	4
Floor	carpet
Dinette to convert into berth	yes
Sink	One double
Cooker	Electric
Microwave	yes
Fridge	yes
Freezer	yes
Coffee maker	yes
Toilet system	yes
Toilet system	electric



## MACHINERY

<b>No of engines</b>	2
<b>Make</b>	Caterpillar
<b>Type</b>	3208
<b>HP</b>	210
<b>kW</b>	154.56
<b>Fuel</b>	diesel
<b>Year installed</b>	1992
<b>Maximum speed (kn)</b>	10
<b>Cruising speed (kn)</b>	7,5
<b>Consumption (l/hr)</b>	30
<b>Engine hours</b>	2200
<b>Engine cooling system</b>	freshwater heat exchanger
<b>Drive</b>	shaft
<b>Engine controls</b>	electrical & bowden cable
<b>Gearbox</b>	yes
<b>Propeller type</b>	fixed
<b>Electrical installation</b>	yes
<b>Generator</b>	Onan 6,5 KVA
<b>Running hours generator</b>	1762
<b>Batteries</b>	yes
<b>Battery monitor</b>	Victron Energy BMV- 700
<b>Battery charger</b>	Victron Energy Centaur 12V/ 40 Amp
<b>Battery charger/inverter</b>	Victron Energy Multi Plus Compact 12V/ 2000VA/ 80 Amp
<b>Solar panel</b>	2 x 150 Watt with Victron Energy MPPT 150/60 Charger
<b>Shorepower</b>	with cable

## NAVIGATION

<b>Depth sounder/log</b>	1x Autohelm Tridata / 1x Raymarine Log and Speed
<b>VHF</b>	Raymarine Ray 54E
<b>Autopilot</b>	2x Autohelm 7000



Radar/GPS yes

## EQUIPMENT

Cockpit cushions yes

Cockpit table yes

Bathing platform yes

Boarding ladder yes

Gangway yes

Anchor Rocna

Anchor chain yes

Anchor 2 CQR Plough

Windlass electrical

Dinghy yes

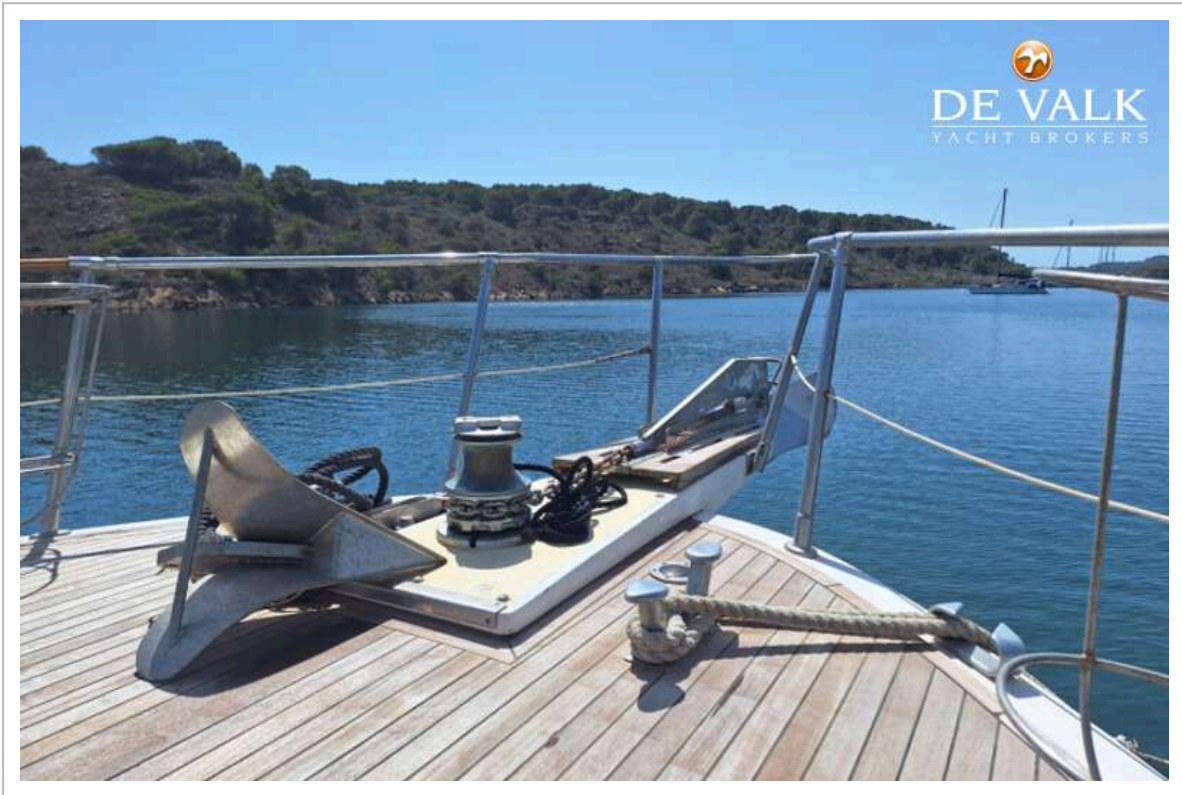
Outboard Honda 2,3

Outboard support yes

Deck crane manual For out boarder

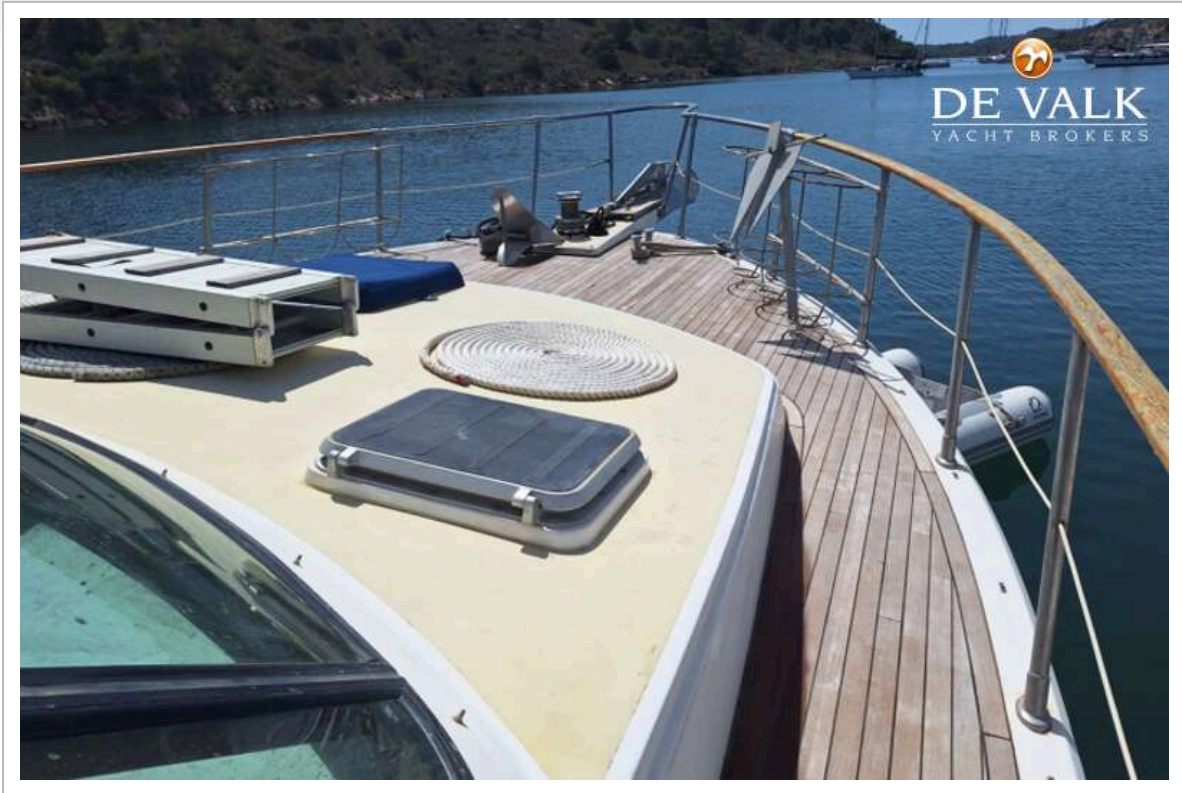


PRESIDENT 43

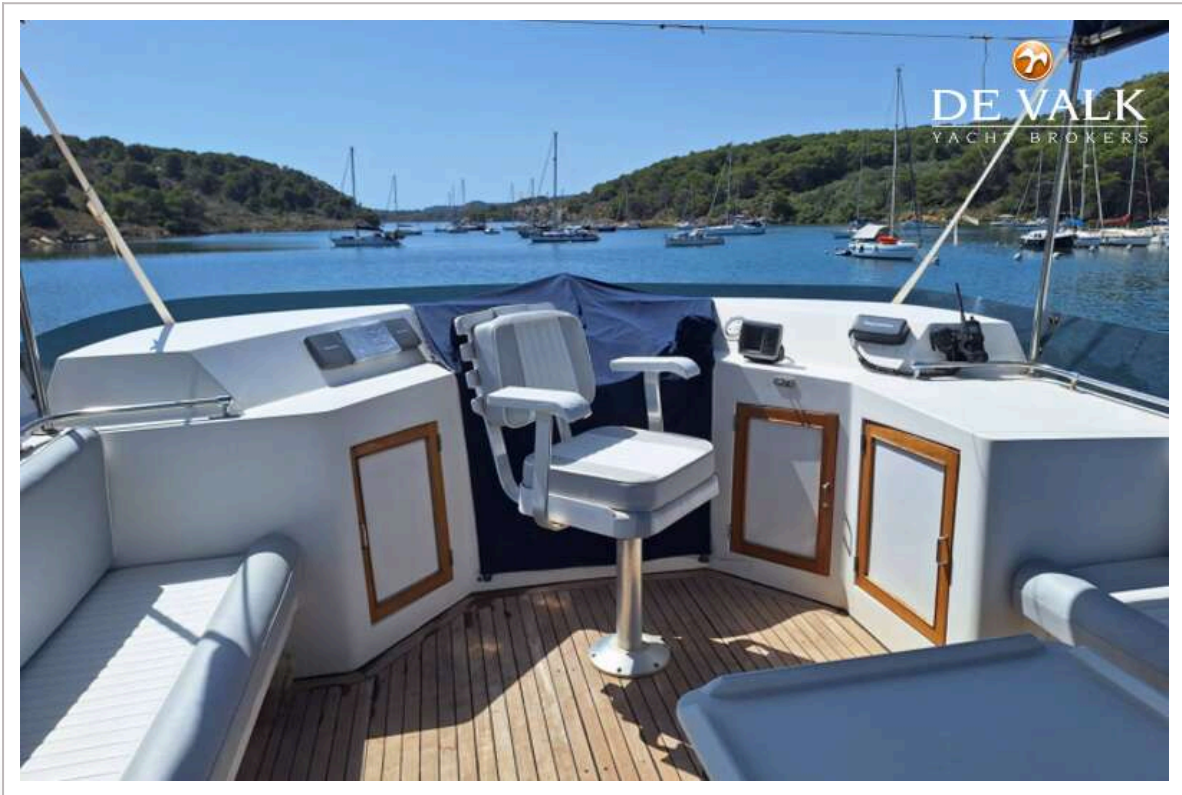




PRESIDENT 43



PRESIDENT 43





PRESIDENT 43

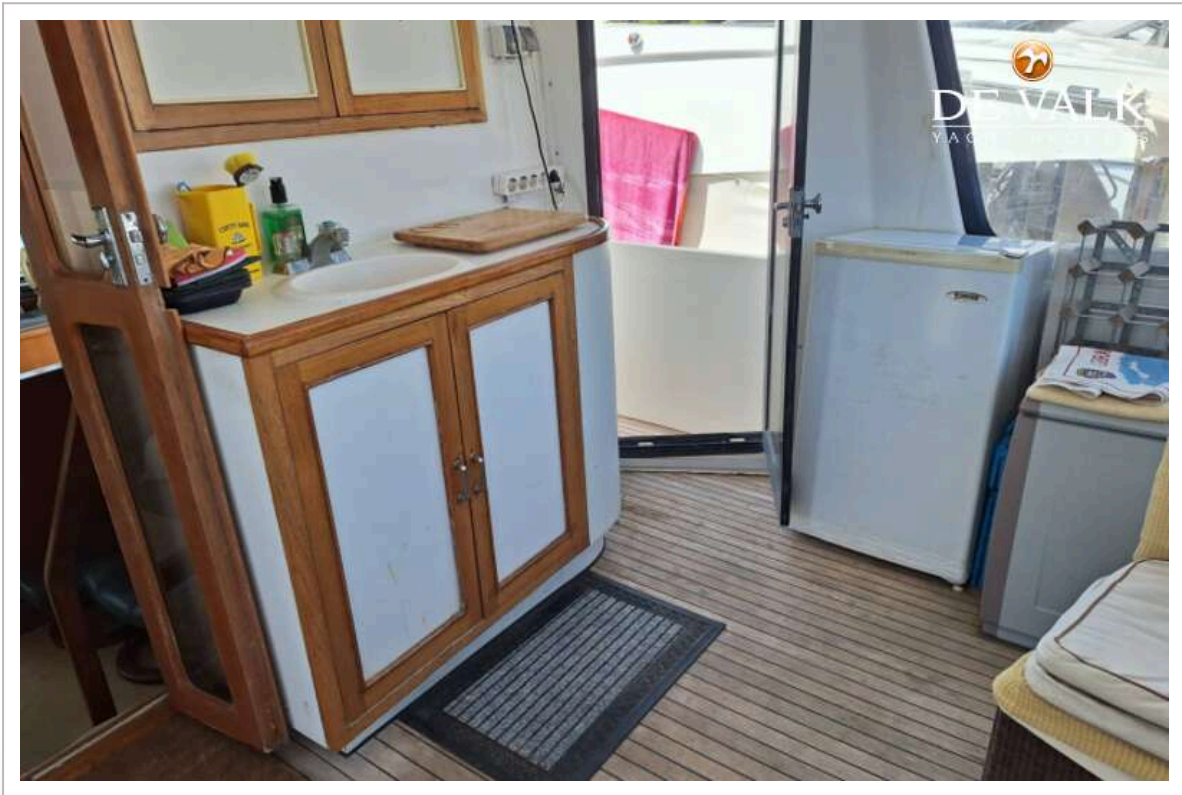


# PRESIDENT 43

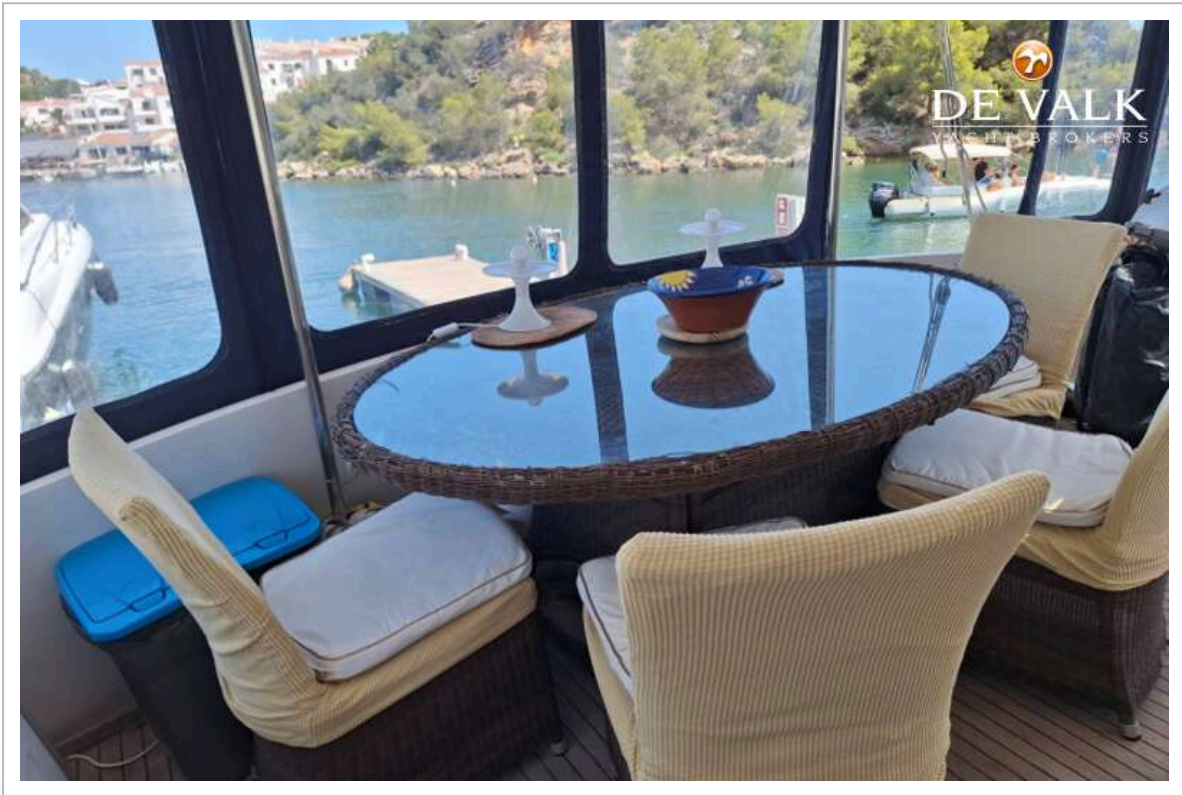




PRESIDENT 43



PRESIDENT 43





PRESIDENT 43

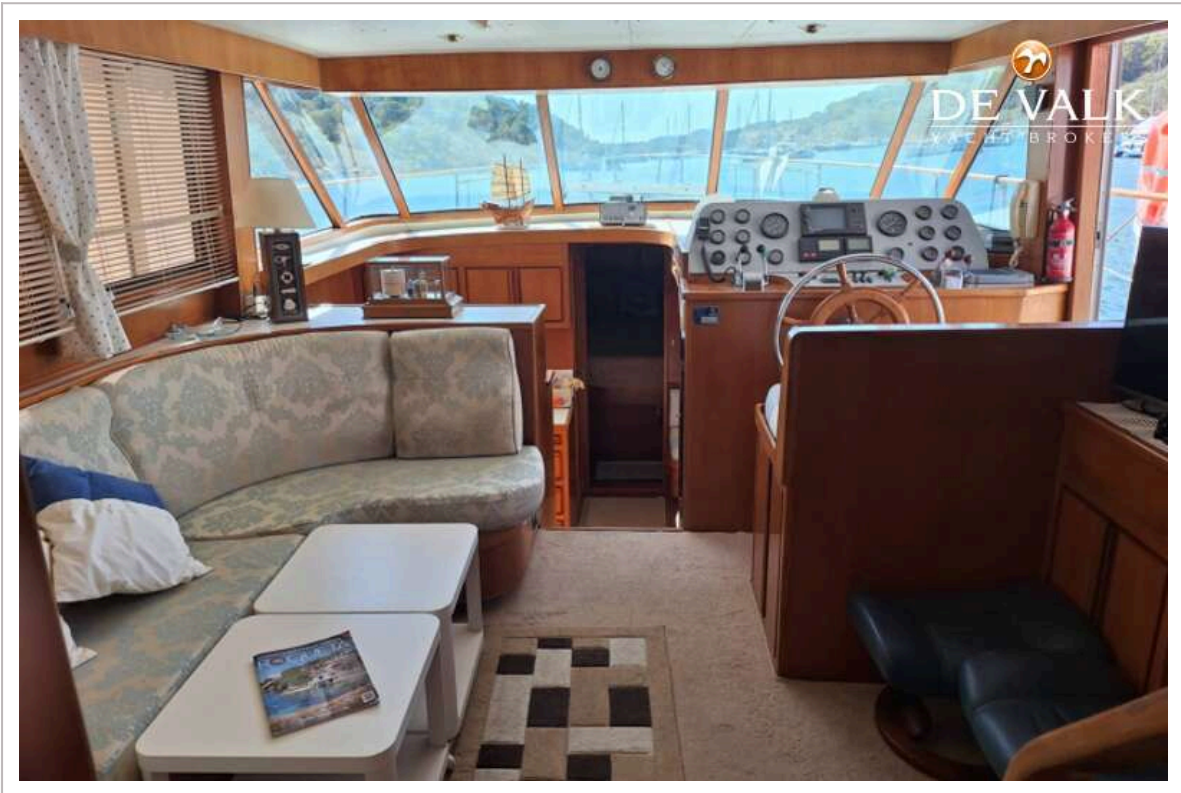
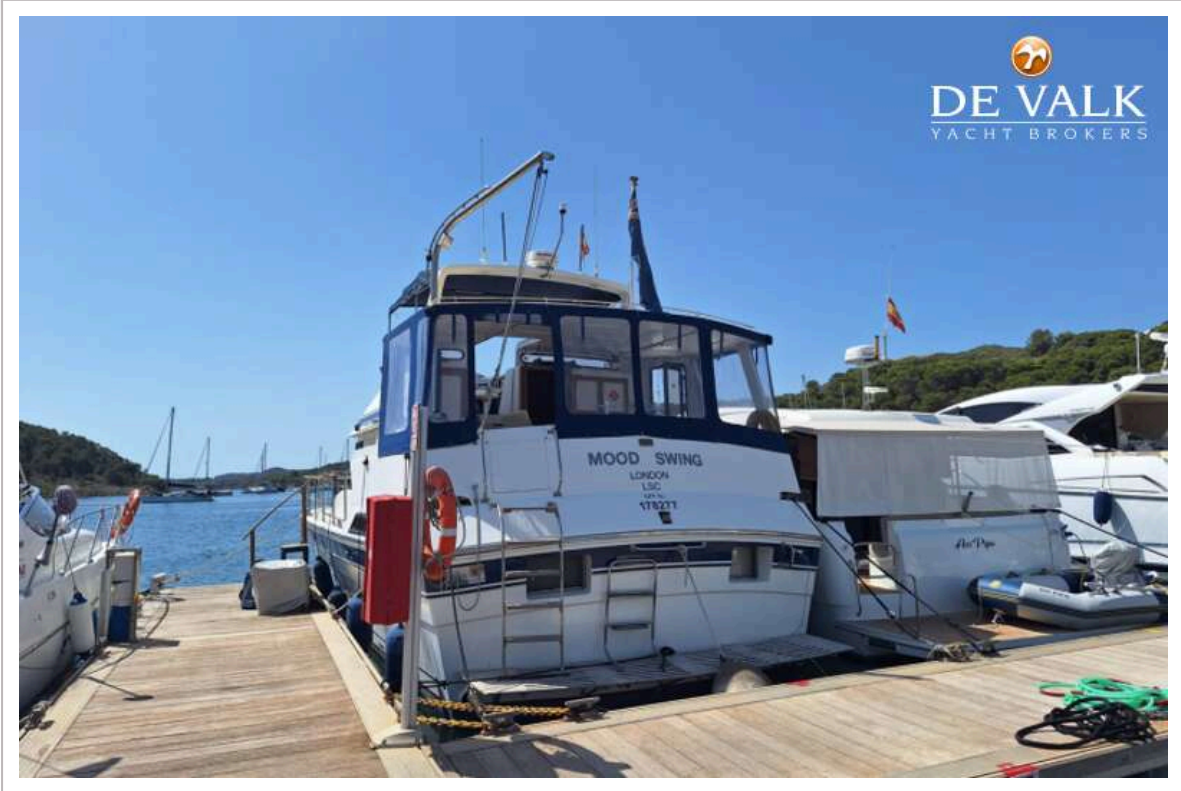


PRESIDENT 43

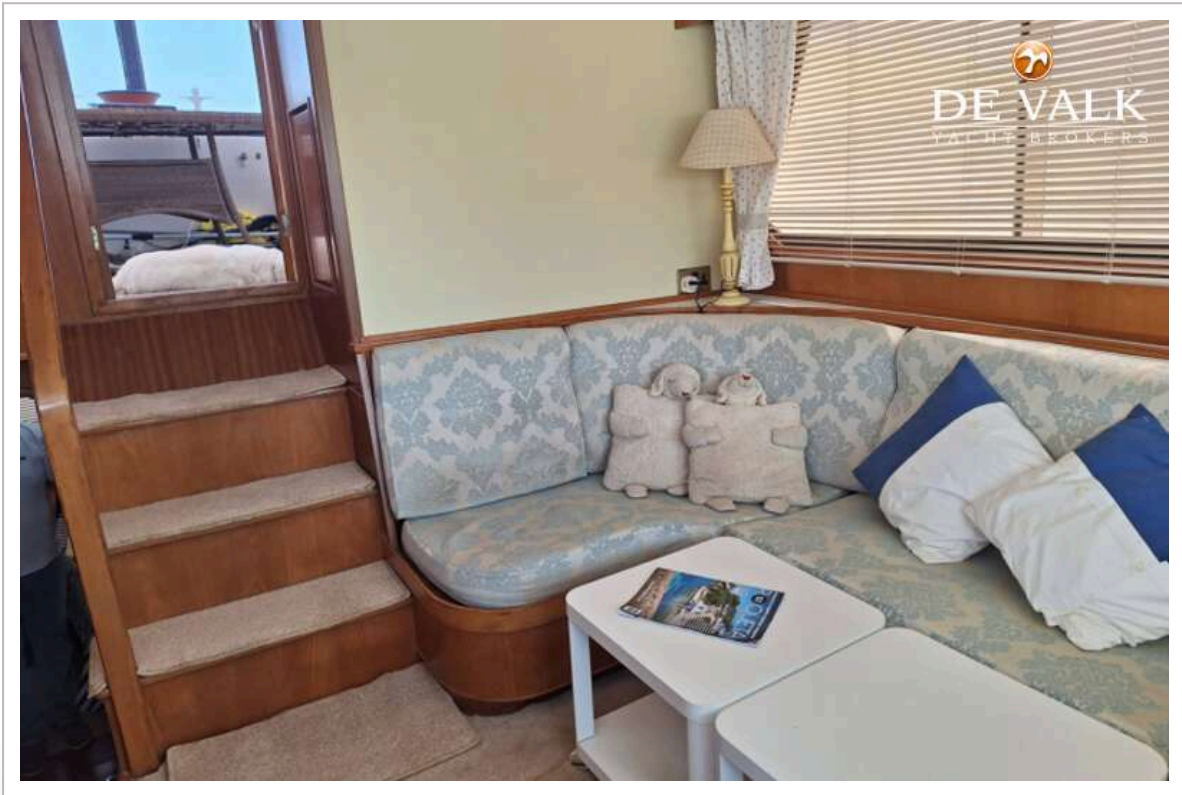
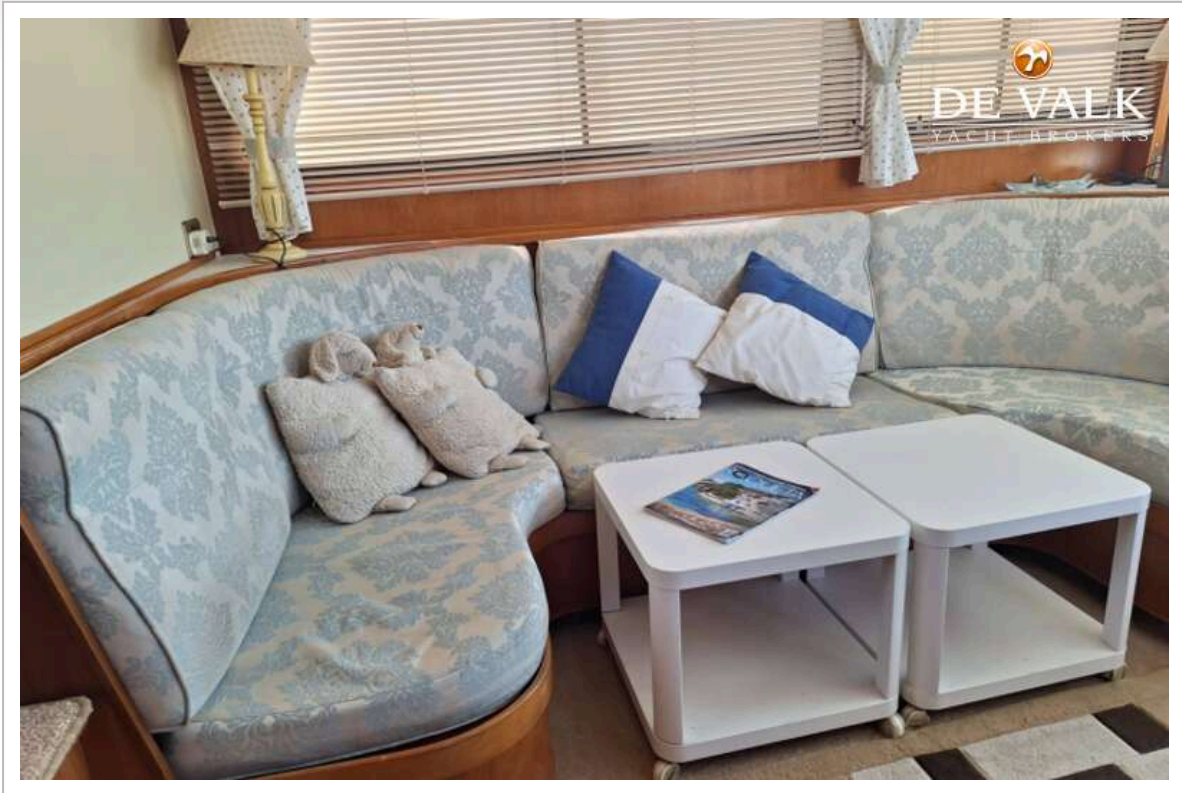




PRESIDENT 43

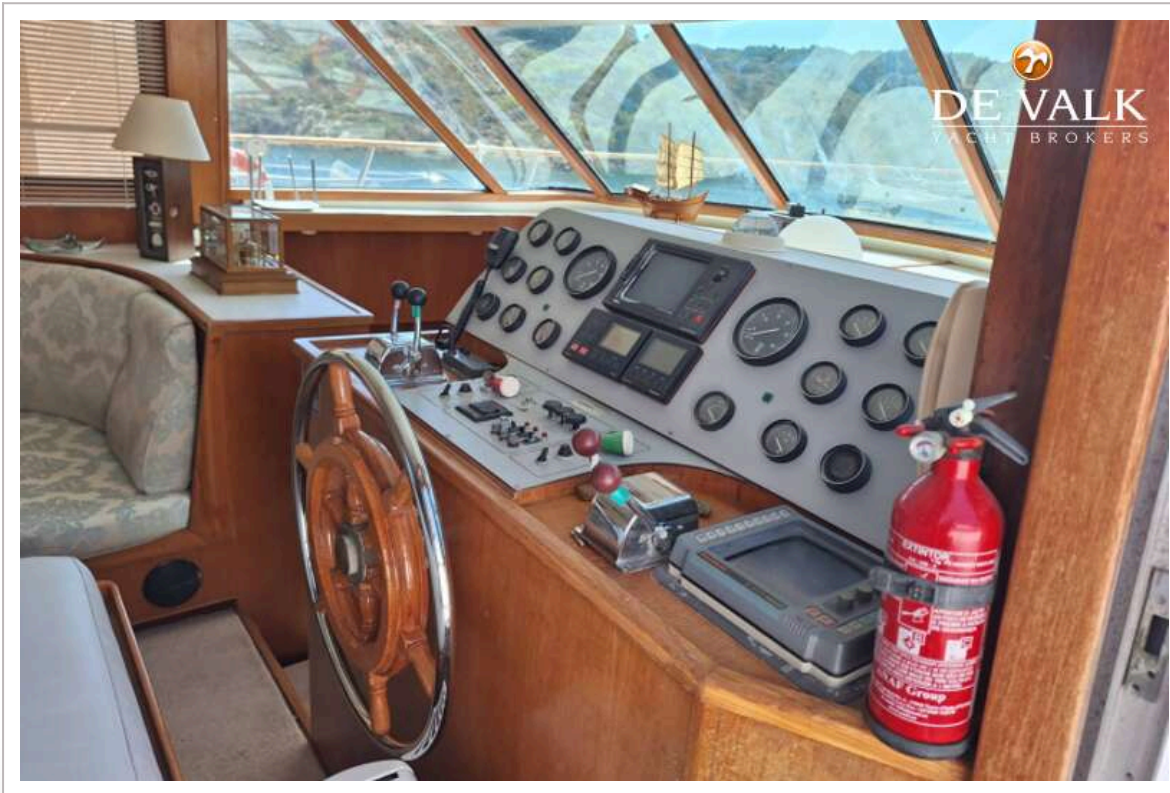


PRESIDENT 43

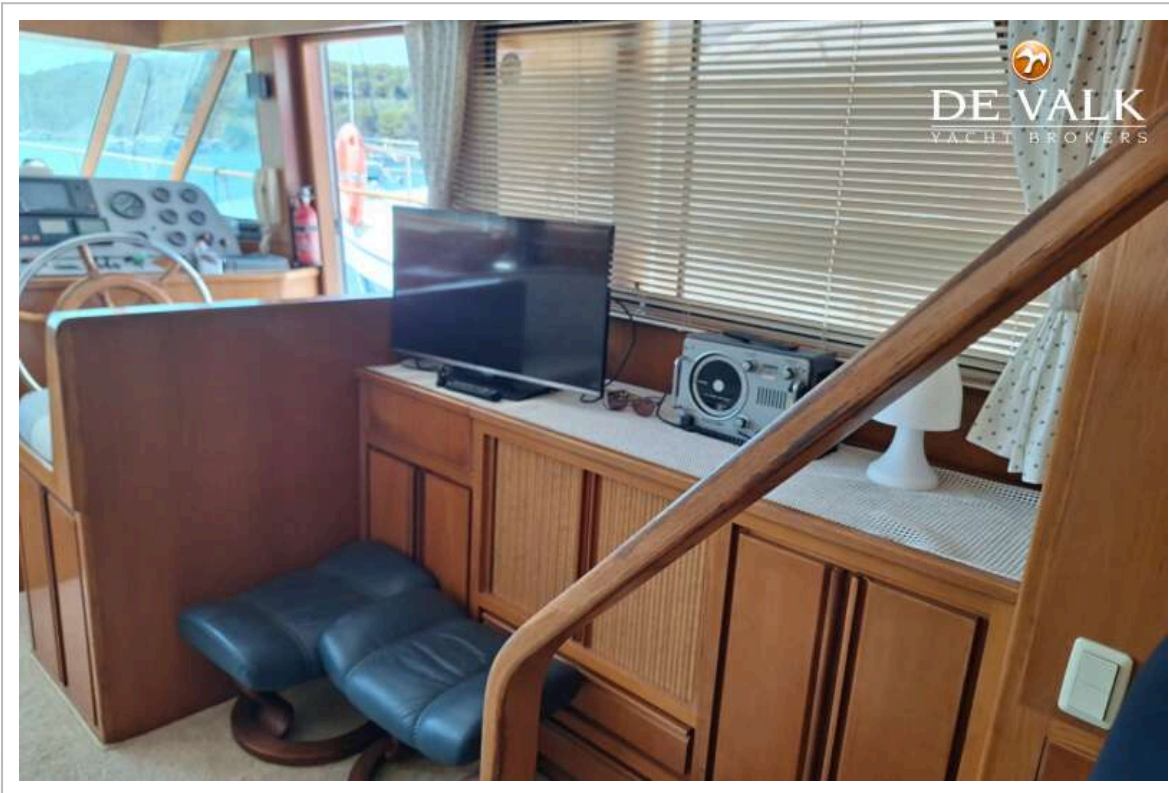




PRESIDENT 43

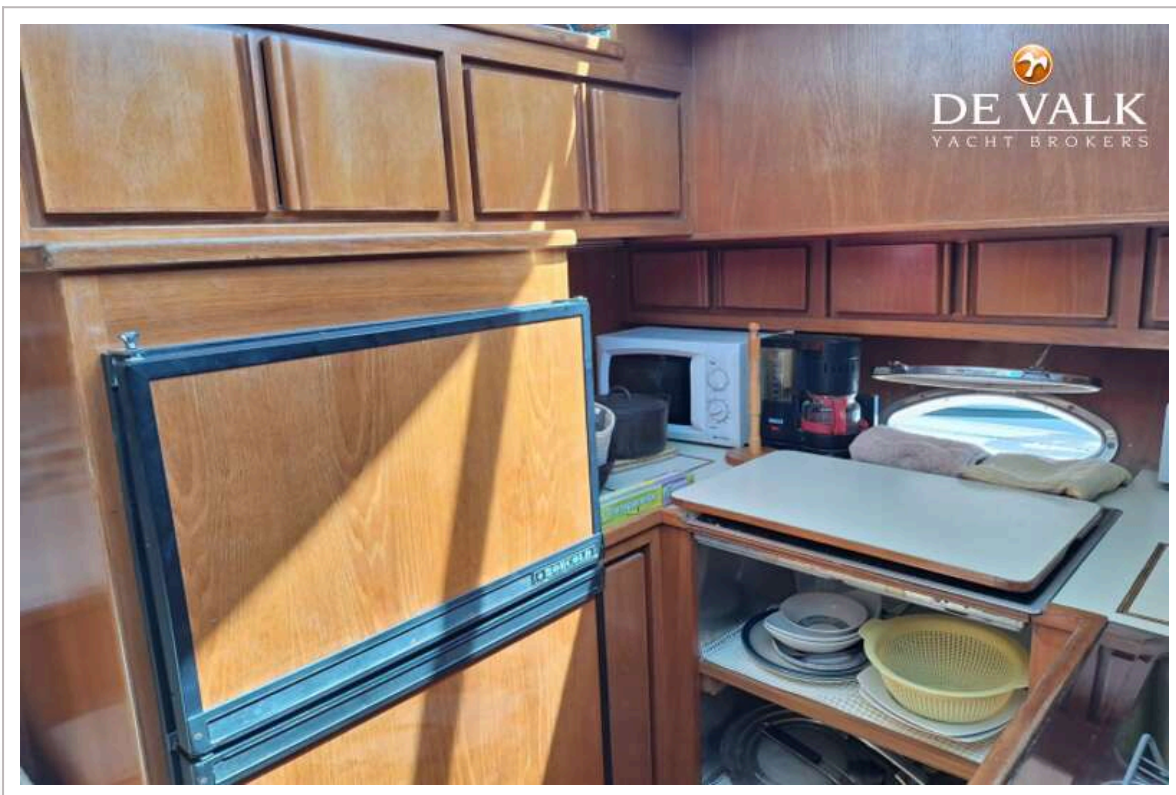
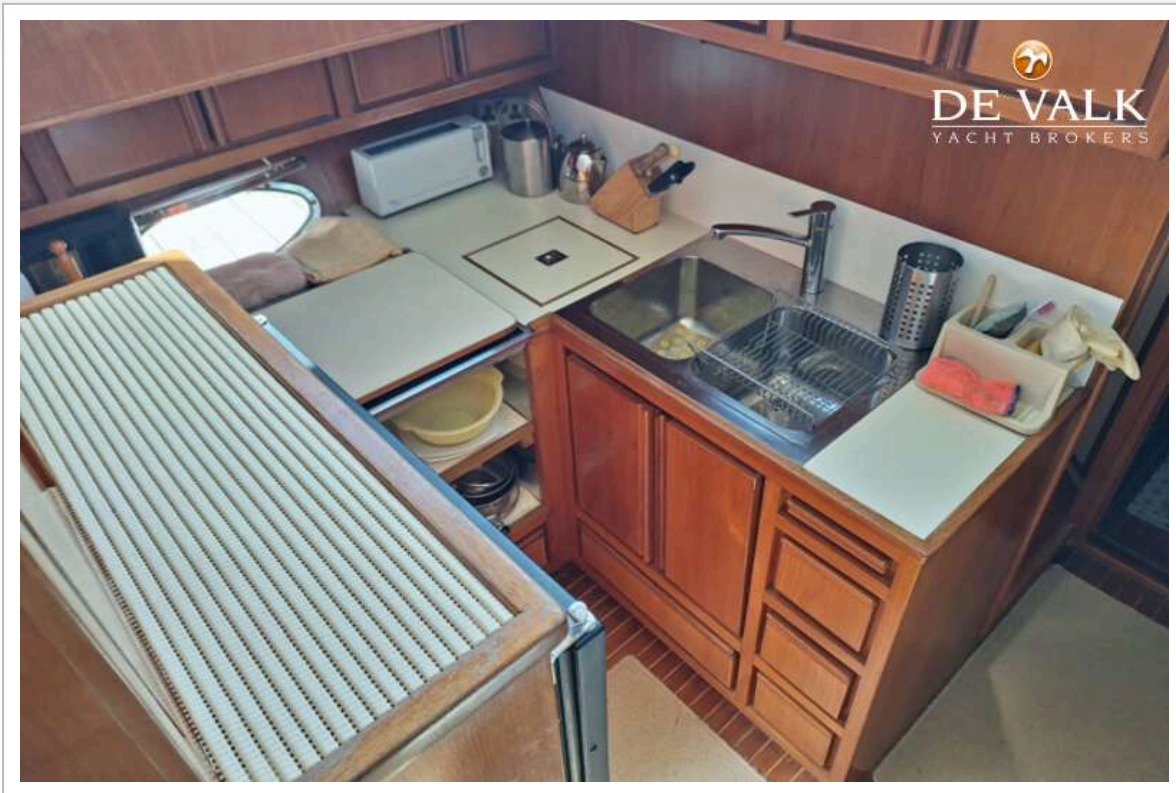


PRESIDENT 43

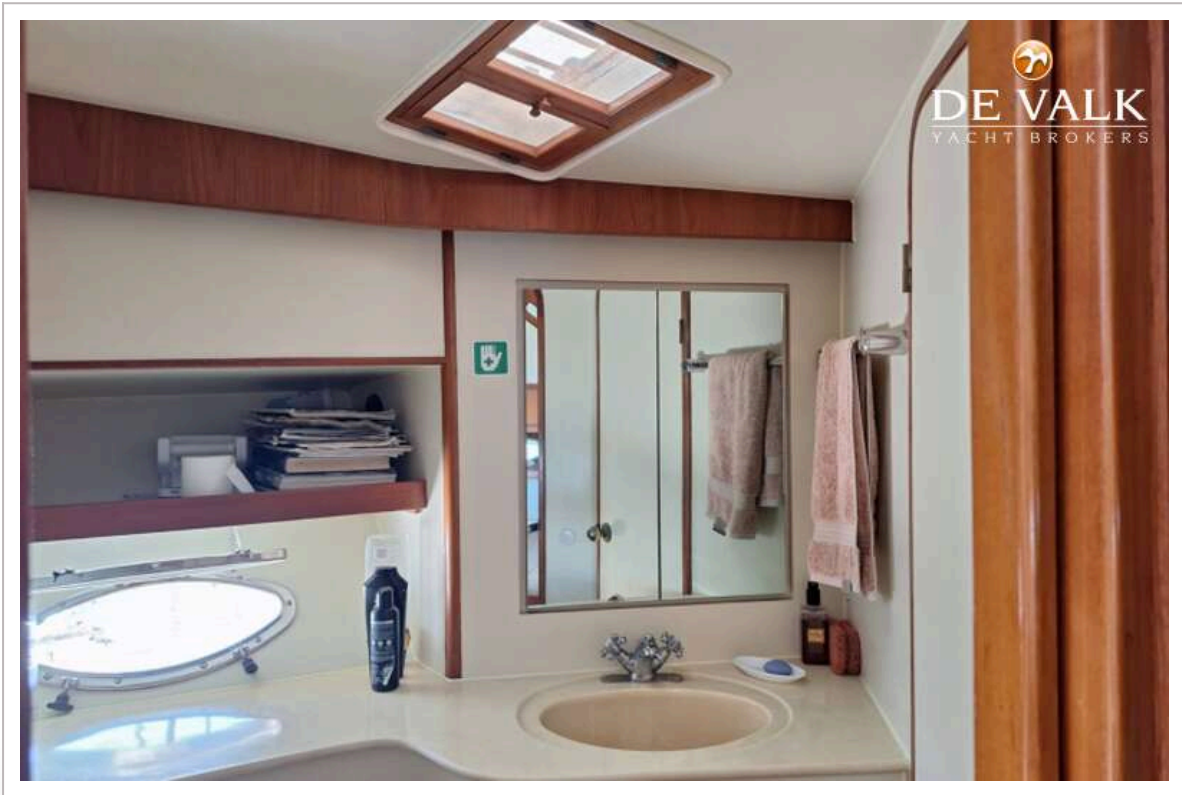
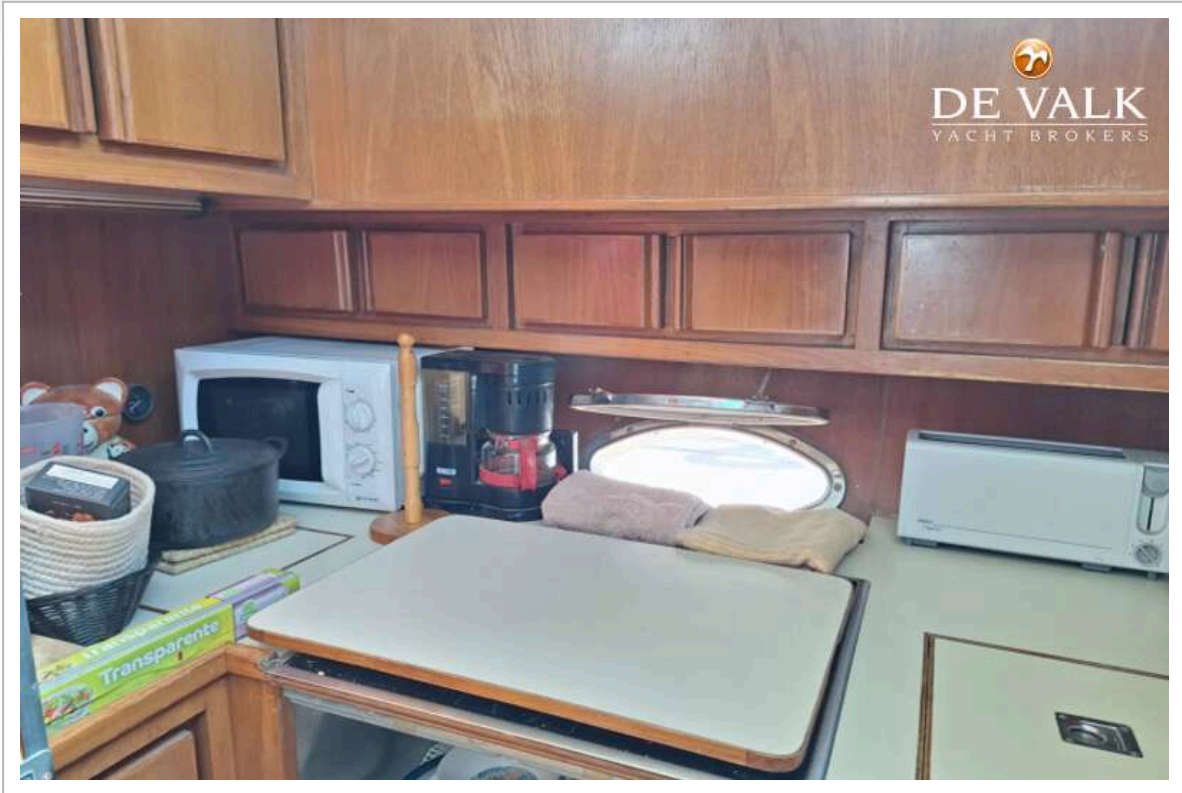




# PRESIDENT 43

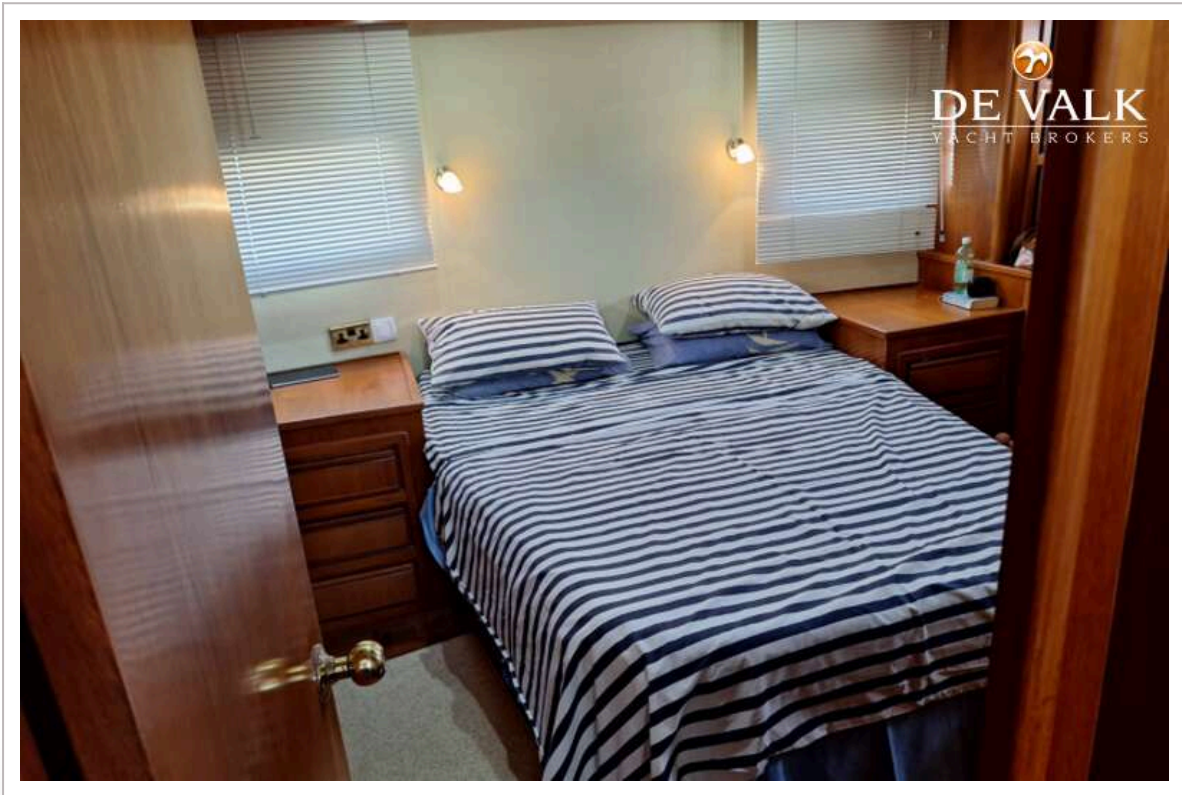
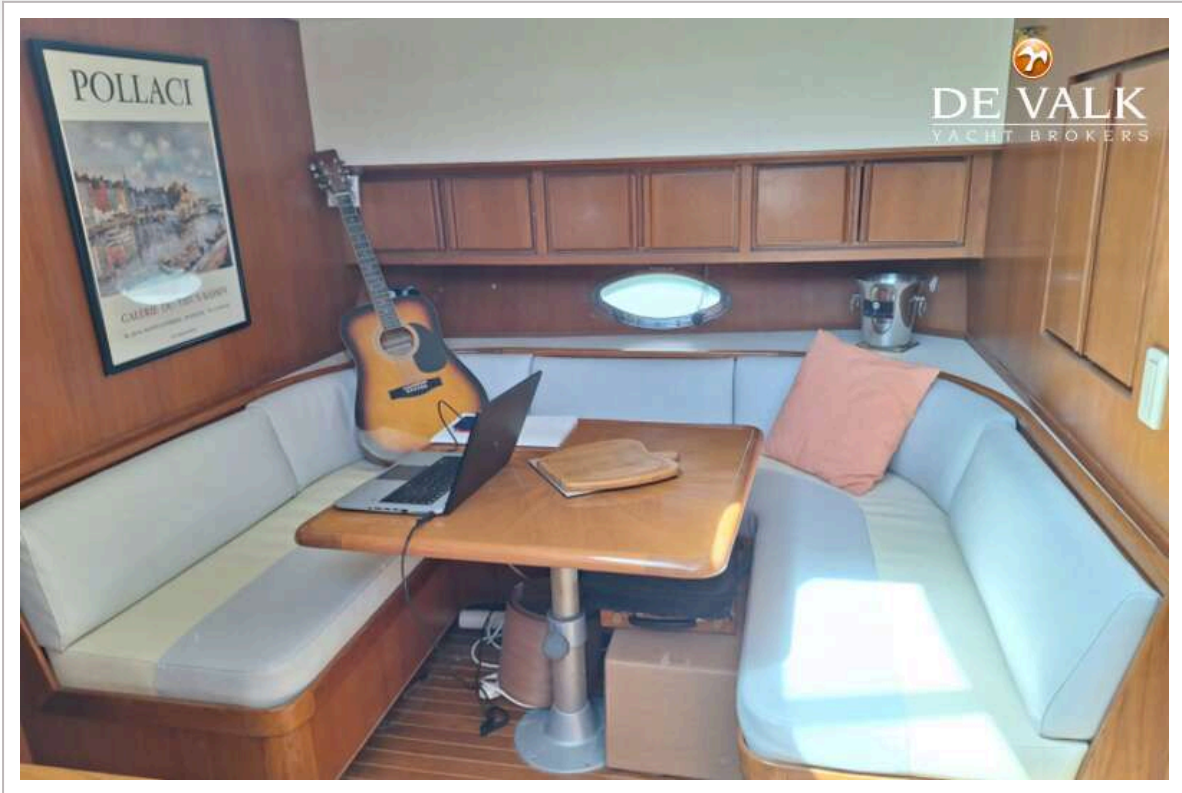


PRESIDENT 43





PRESIDENT 43

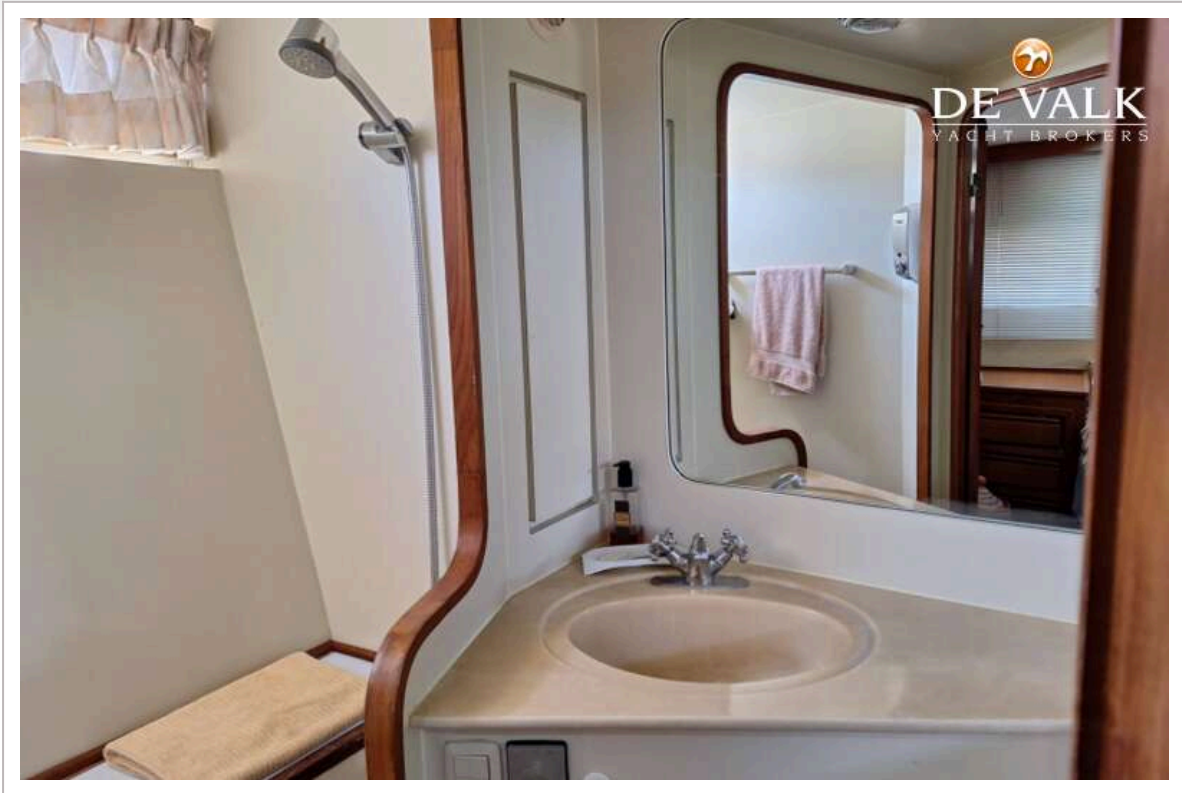


PRESIDENT 43





PRESIDENT 43



PRESIDENT 43

