



DE VALK  
YACHT BROKERS



## SUNSEEKER 52 CARIBBEAN



DE VALK  
YACHT BROKERS

# SUNSEEKER 52 CARIBBEAN

## BROKER'S COMMENTS

Sunseeker always produce stylish and well-built craft, and the 52 Caribbean is no exception. Its looks are distinctive, performance is more than adequate, and seakeeping is good. The interior provides a good balance between entertaining and living areas, and there is plenty of open-air space. The interior is in very good conditions while the exterior shows some weathering. Available for viewing in the province of Almeria.

*Jörg Hellmich*

## SPECIFICATIONS

<b>Dimensions</b>	15.86 x 4.60 x 1.30 (m)	<b>Builder</b>	Sunseeker
<b>Built</b>	1991	<b>Cabins</b>	3
<b>Material</b>	GRP	<b>Berths</b>	8
<b>Engine(s)</b>	2 x MAN TGE diesel	<b>Hp/Kw</b>	2 x 694.00 (hp), 510.78 (kw)
<b>Asking price</b>	€ 120.000 (VAT Paid)	<b>Lying</b>	at sales office

## CONTACT

<b>Sales office</b>	De Valk Almeria	<b>Telephone</b>	+34 950 497 825
<b>Address</b>	Puerto de Almerimar Darsena de la Batea 1, No. 42, 04711 Almerimar Spain	<b>E-mail</b>	almeria@devalk.nl

## DISCLAIMER

These particulars are given in good faith as supplied but cannot be guaranteed.



# SUNSEEKER 52 CARIBBEAN

## GENERAL

<b>Model</b>	SUNSEEKER 52 CARIBBEAN
<b>Type</b>	motor yacht
<b>LOA (m)</b>	15,86
<b>LWL (m)</b>	12,50
<b>Beam (m)</b>	4,60
<b>Draft (m)</b>	1,30
<b>Air draft min (m)</b>	5,00
<b>Headroom (m)</b>	1,98
<b>Year built</b>	1991
<b>Builder</b>	Sunseeker
<b>Country</b>	United Kingdom
<b>Displacement (t)</b>	25
<b>Gross tonnage</b>	17,5
<b>CE norm</b>	NA
<b>Hull material</b>	GRP
<b>Hull colour</b>	blue
<b>Hull shape</b>	Fast Displacement Hull
<b>Superstructure material</b>	GRP
<b>Rubbing strake</b>	stainless steel
<b>Deck material</b>	GRP
<b>Deck finish</b>	non-skid moulded in
<b>Superstructure deck finish</b>	non-skid moulded in
<b>Cockpit deck finish</b>	teak
<b>Window frame</b>	aluminium
<b>Window material</b>	perspex
<b>Deckhatch</b>	Lewmar
<b>Portholes</b>	stainless steel
<b>Insulation</b>	foam
<b>Flybridge</b>	yes
<b>Flybridge cover</b>	yes



# SUNSEEKER 52 CARIBBEAN

<b>Flybridge cockpit cover</b>	yes
<b>Radar arch</b>	yes
<b>Fuel tank (litre)</b>	1200
<b>Fuel tank 2 (litre)</b>	1200
<b>Level indicator (fuel tank)</b>	Gauge
<b>Freshwater tank (litre)</b>	800
<b>Level indicator (freshwater)</b>	Gauge
<b>Blackwater tank (litre)</b>	stainless steel 50
<b>Blackwater tank extraction</b>	deck extraction + pump
<b>Level indicator (greywater)</b>	LED
<b>Wheel steering</b>	hydraulic
<b>Inside helm position</b>	yes
<b>Flybridge helm position</b>	hydraulic

## ACCOMMODATION

<b>Cabins</b>	3
<b>Berths</b>	8
<b>Layout</b>	3 cabin version with utility room
<b>Floor</b>	wood
<b>Deck saloon</b>	yes
<b>Headroom saloon (m)</b>	1,96
<b>Air-conditioning</b>	reverse cycle airco 4 x Marine Air System
<b>Dinette</b>	yes
<b>Dinette to convert into berth</b>	yes
<b>Sliding door to aft deck</b>	yes
<b>Galley</b>	L-shape
<b>Countertop</b>	wood
<b>Sink</b>	stainless steel
<b>Cooker</b>	induction Klarstein
<b>Fridge</b>	Cecool
<b>Freezer</b>	Cecool



# SUNSEEKER 52 CARIBBEAN

Hot water system	220V + engine Boiler
Water pressure system	electrical
Kettle	yes
Hot water tap	yes
Coffee maker	yes
Crockery	yes
Owners cabin	double bed
Bed length (m)	2,00
Wardrobe	hanging and shelves
Toilet	en suite
Toilet system	electric
Wash basin	at the toilet
Shower	en suite
Guest cabin 1	twin single Port
Bed length (m)	2,00
Wardrobe	hanging and shelves
Toilet	en suite
Toilet system	electric
Wash basin	at the toilet
Shower	en suite
Guest cabin 2	twin single STB
Bed length (m)	2,00
Toilet	shared
Toilet system	electric
Wash basin	at the toilet
Shower	shared
Washing machine	Brandt
Flybridge	yes

## MACHINERY

No of engines	2
---------------	---



# SUNSEEKER 52 CARIBBEAN

<b>Make</b>	MAN
<b>Type</b>	TGE
<b>HP</b>	694
<b>kW</b>	510.78
<b>Fuel</b>	diesel
<b>Year installed</b>	1991
<b>Maximum speed (kn)</b>	24
<b>Cruising speed (kn)</b>	18
<b>Engine hours</b>	1826
<b>Engine cooling system</b>	freshwater heat exchanger
<b>Drive</b>	shaft
<b>Shaft seal</b>	yes
<b>Engine controls</b>	electrical
<b>Gearbox</b>	hydraulic
<b>Bowthruster</b>	electric Sidepower
<b>Exhaust</b>	watercooled
<b>Propeller type</b>	fixed
<b>Propeller blades</b>	4
<b>Propeller shaft material</b>	stainless steel
<b>Shaft lubrication</b>	water
<b>Manual bilge pump</b>	yes
<b>Electric bilge pump</b>	yes
<b>Generator</b>	wet exhaust Mase (10 kVA)
<b>Start battery</b>	6 x 12V (new 07.2024)
<b>Service battery</b>	6 x 12V (new 2023)
<b>Battery monitor</b>	Gauge
<b>Battery charger</b>	yes
<b>Inverter</b>	yes
<b>Shorepower</b>	with cable 240V
<b>Trimtabs</b>	yes



# SUNSEEKER 52 CARIBBEAN

## NAVIGATION

Compass on flybridge	yes
Electric compass	yes
Depth sounder	VDO
Log	Sumlog HS Gauge
Repeater	Furuno Ga As FET Display
VHF	Shipmate
VHF handheld	Raymarine 240E
Autopilot	Raymarine ST6001
Radar	Furuno FCV 611
GPS	Furuno GP 70 & GP 31 Navigator
Plotter/GPS	Raymarine RL80c & RL70c (fly)
Electronic chart(s)	yes
EPIRB	Mausmar
Navigation lights	yes

## EQUIPMENT

Cockpit cover	Enclosure
Sun awning	yes
Cockpit cushions	yes
Cockpit chairs	yes
Bathing platform	yes
Boarding ladder	stainless steel
Transom door	yes
Gangway	Hydraulic
Deck shower	yes
Anchor	Delta
Anchor chain	yes
Windlass	electrical Lofrans
Sea railing	stainless steel
Grab rail (superstructure)	stainless steel



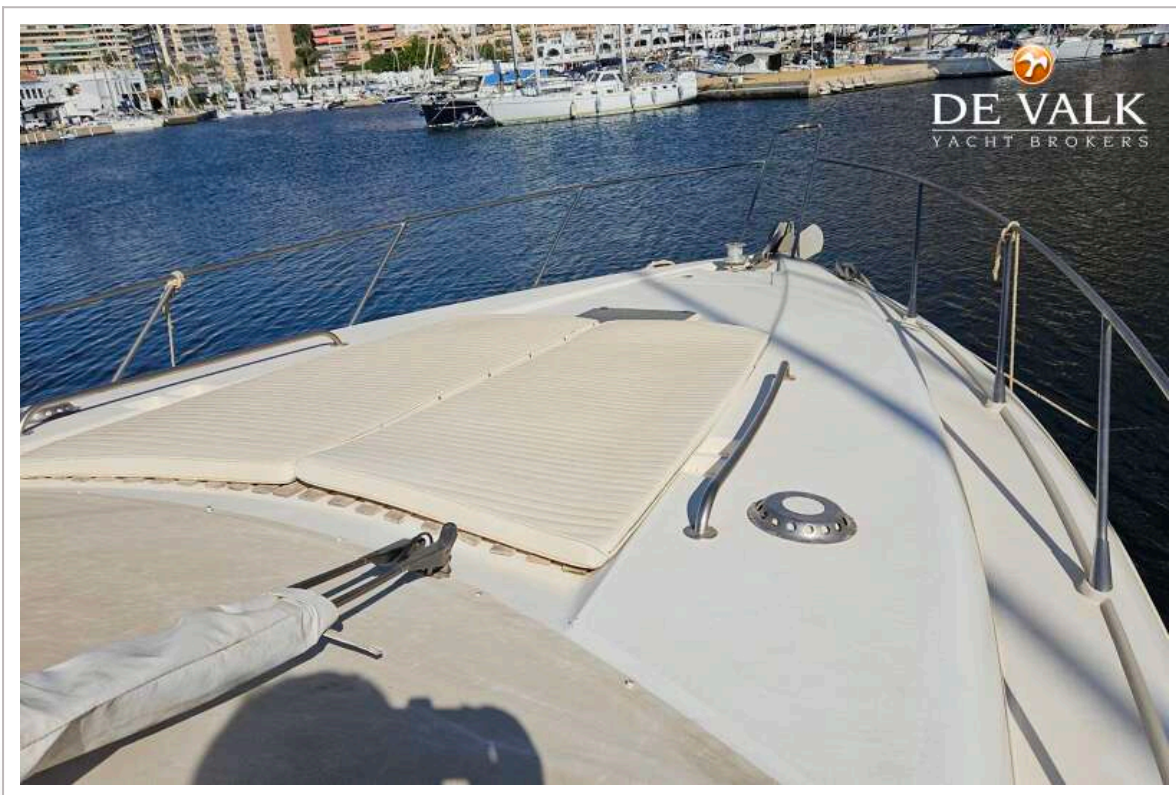
# SUNSEEKER 52 CARIBBEAN

<b>Pulpit</b>	yes
<b>Life raft</b>	container Mausmar
<b>Life raft (pers)</b>	6
<b>Lifejackets</b>	yes
<b>Danbuoy</b>	Rings
<b>Wiper</b>	yes
<b>Clearview window</b>	yes
<b>Horn</b>	electric
<b>Fenders</b>	yes
<b>Mooring lines</b>	yes
<b>TV</b>	Samsung
<b>Radio</b>	Fusion
<b>DVD player</b>	Fusion
<b>Cockpit speakers</b>	Clarion
<b>Speakers in salon</b>	Clarion
<b>Speakers in cabin</b>	yes
<b>Clock - barometer</b>	yes
<b>Fire extinguisher</b>	yes
<b>Extinguisher in engine room</b>	yes





# SUNSEEKER 52 CARIBBEAN

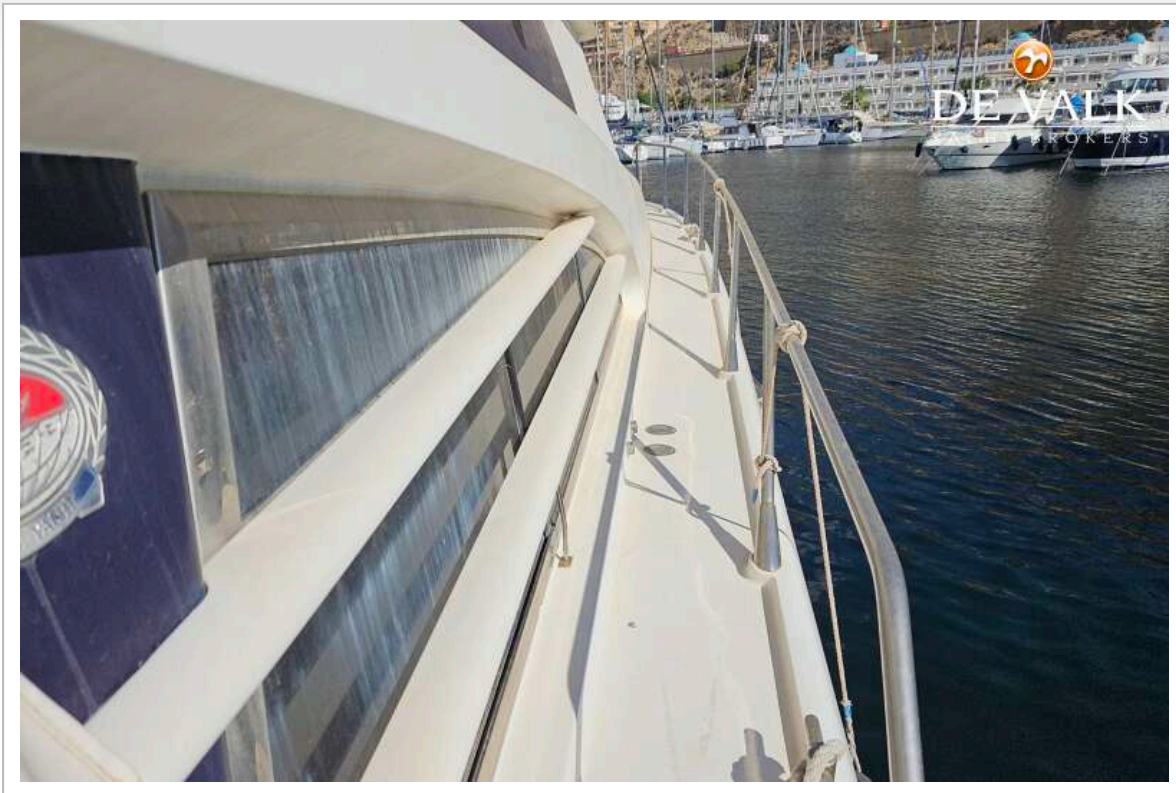


# SUNSEEKER 52 CARIBBEAN





# SUNSEEKER 52 CARIBBEAN



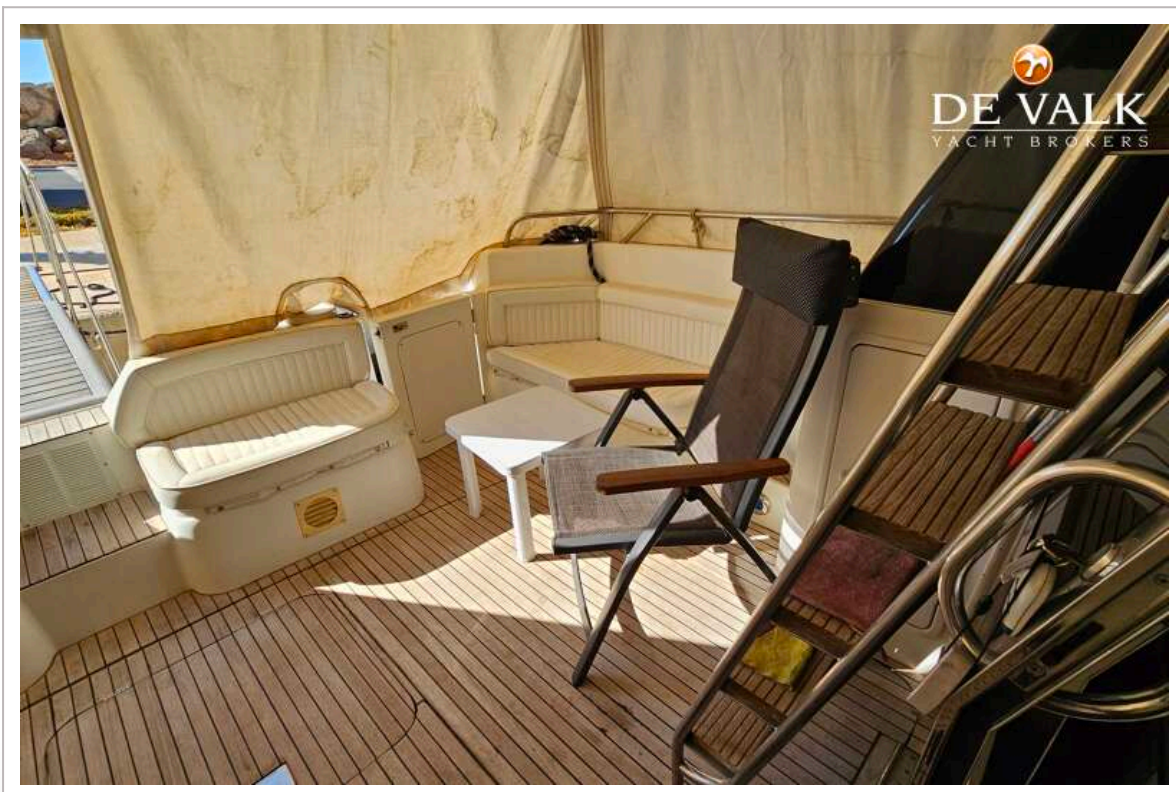


# SUNSEEKER 52 CARIBBEAN



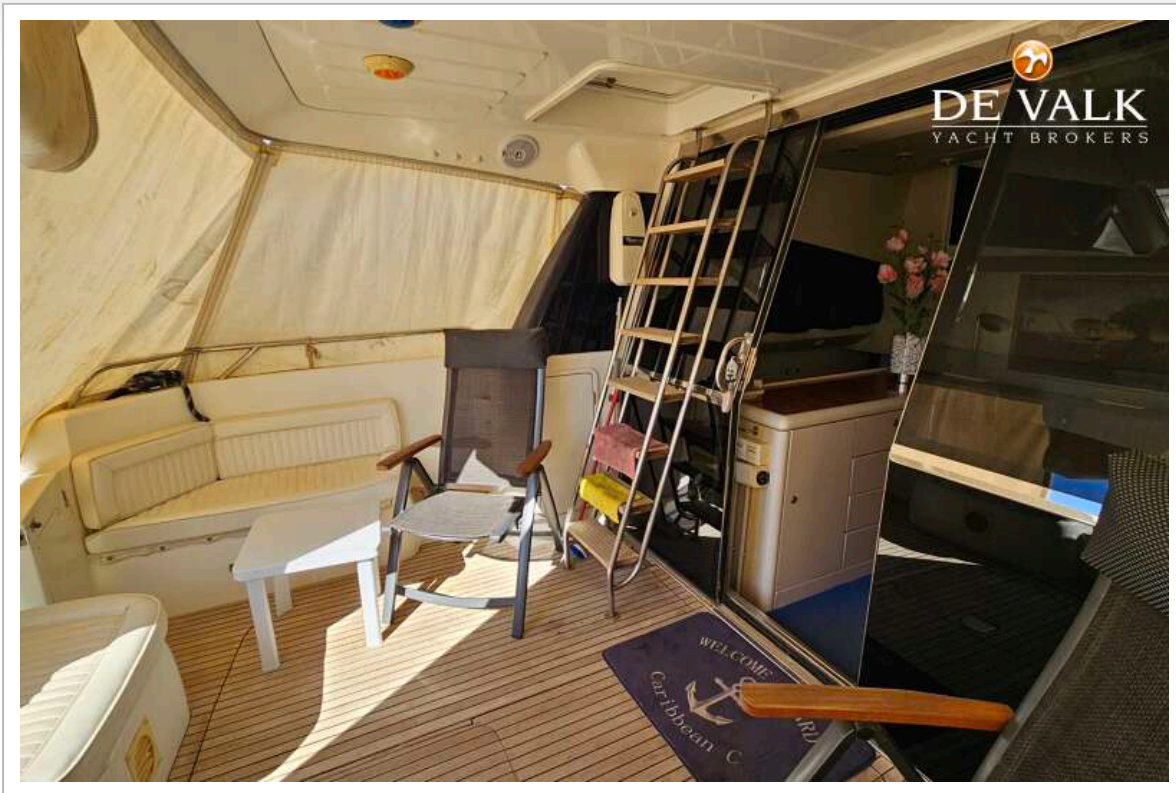


# SUNSEEKER 52 CARIBBEAN



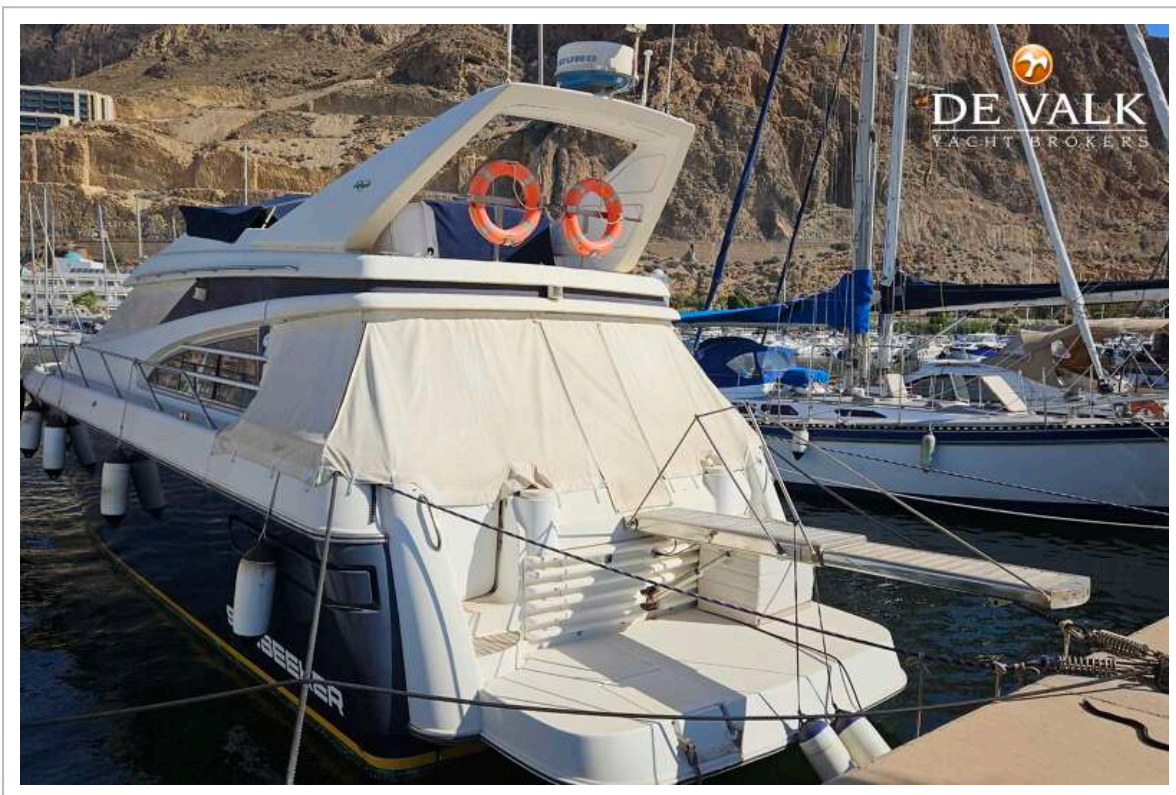
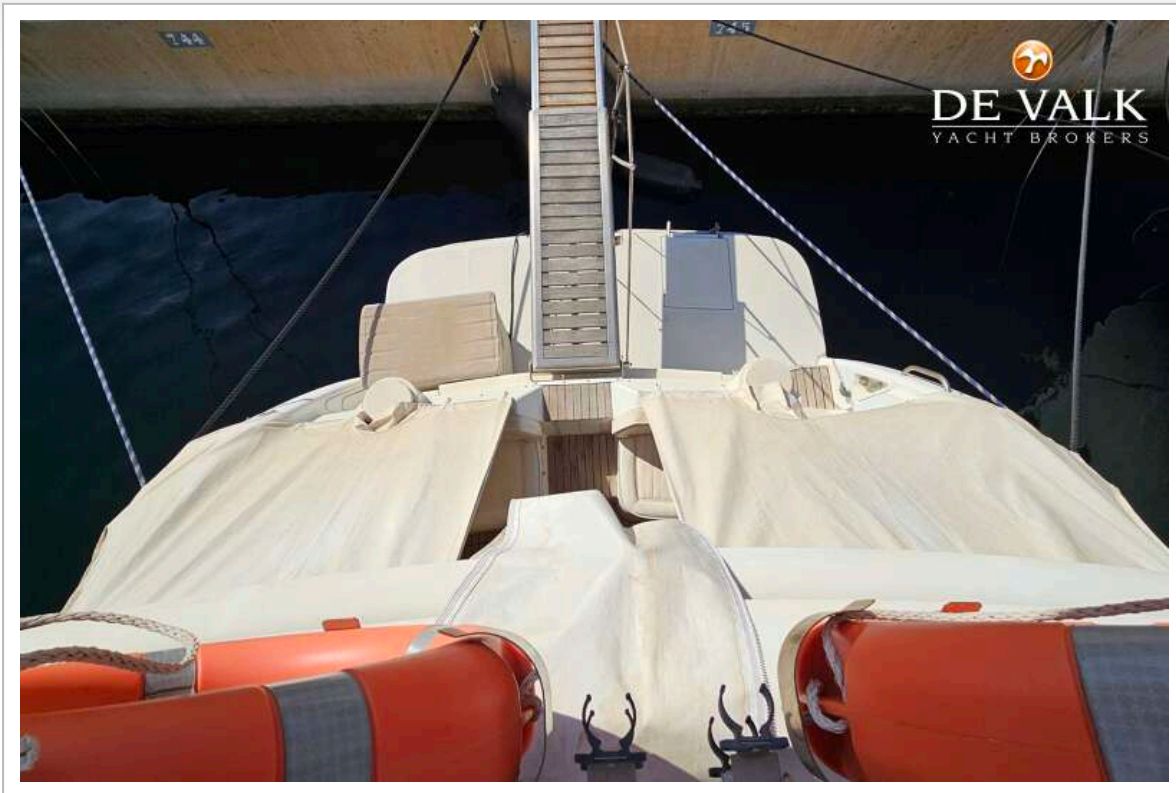


# SUNSEEKER 52 CARIBBEAN





# SUNSEEKER 52 CARIBBEAN



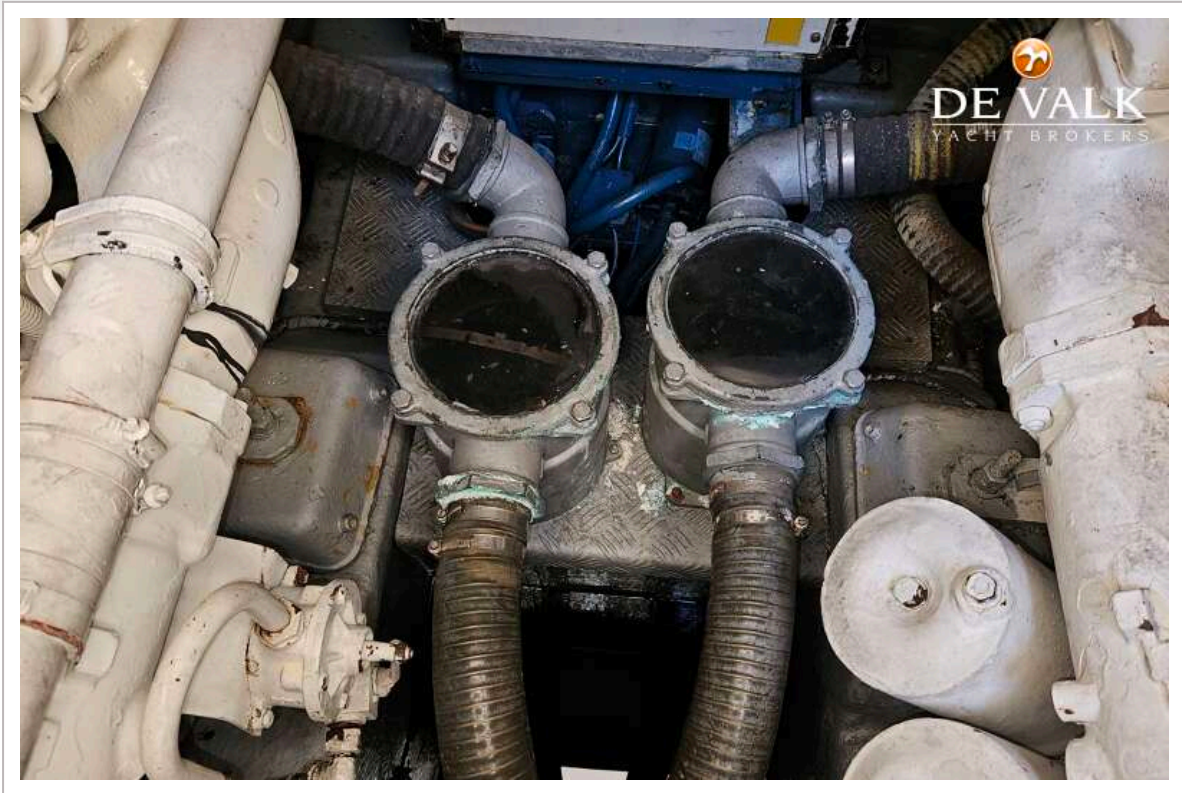


SUNSEEKER 52 CARIBBEAN



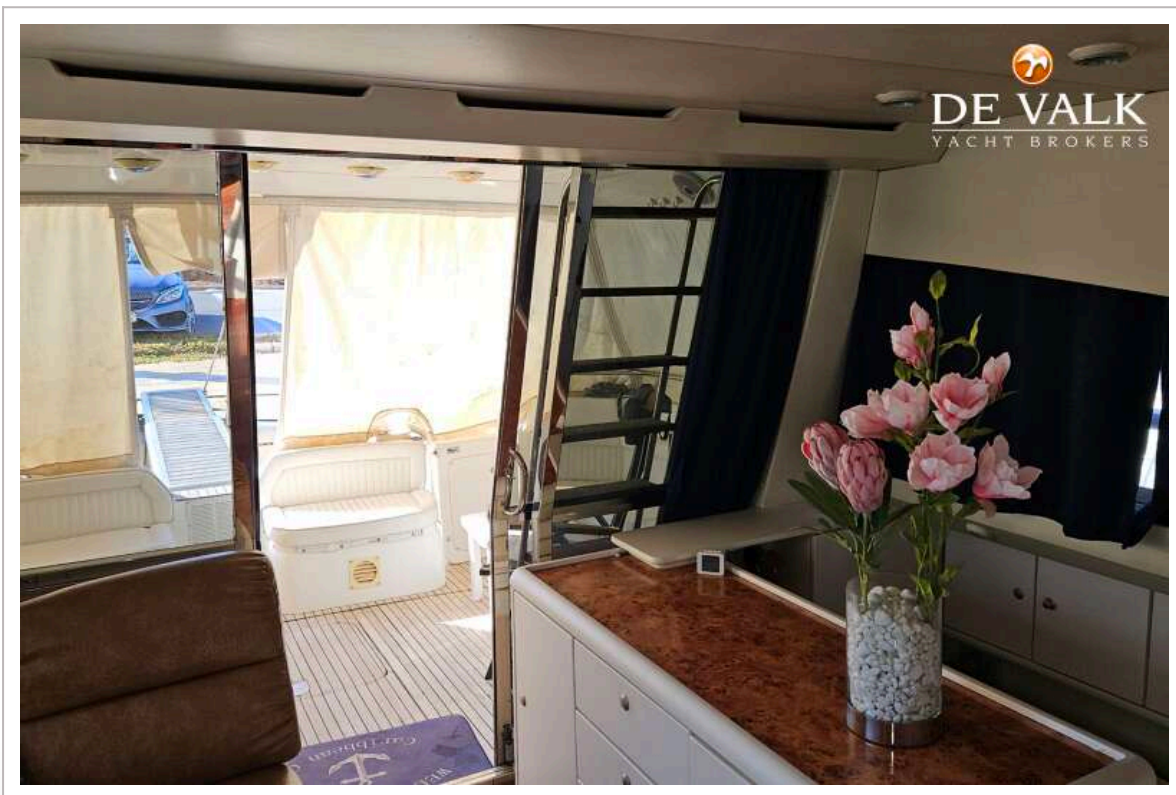


SUNSEEKER 52 CARIBBEAN

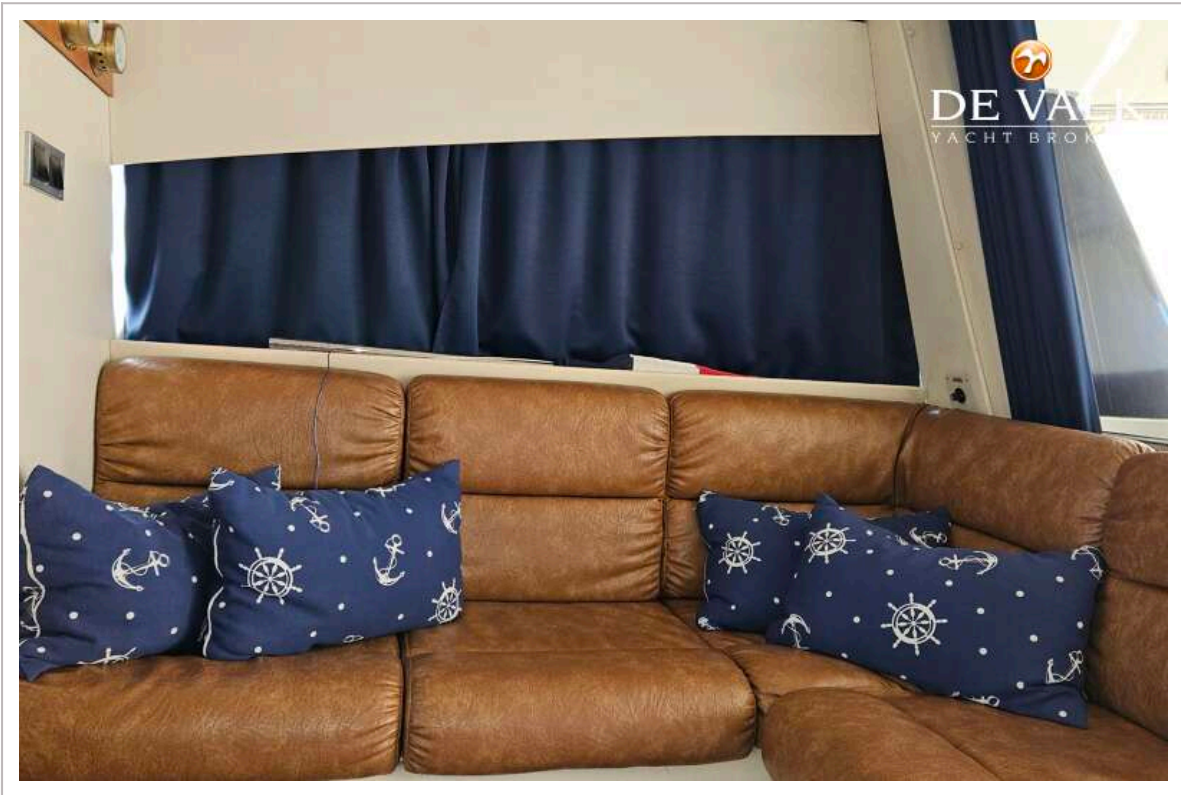
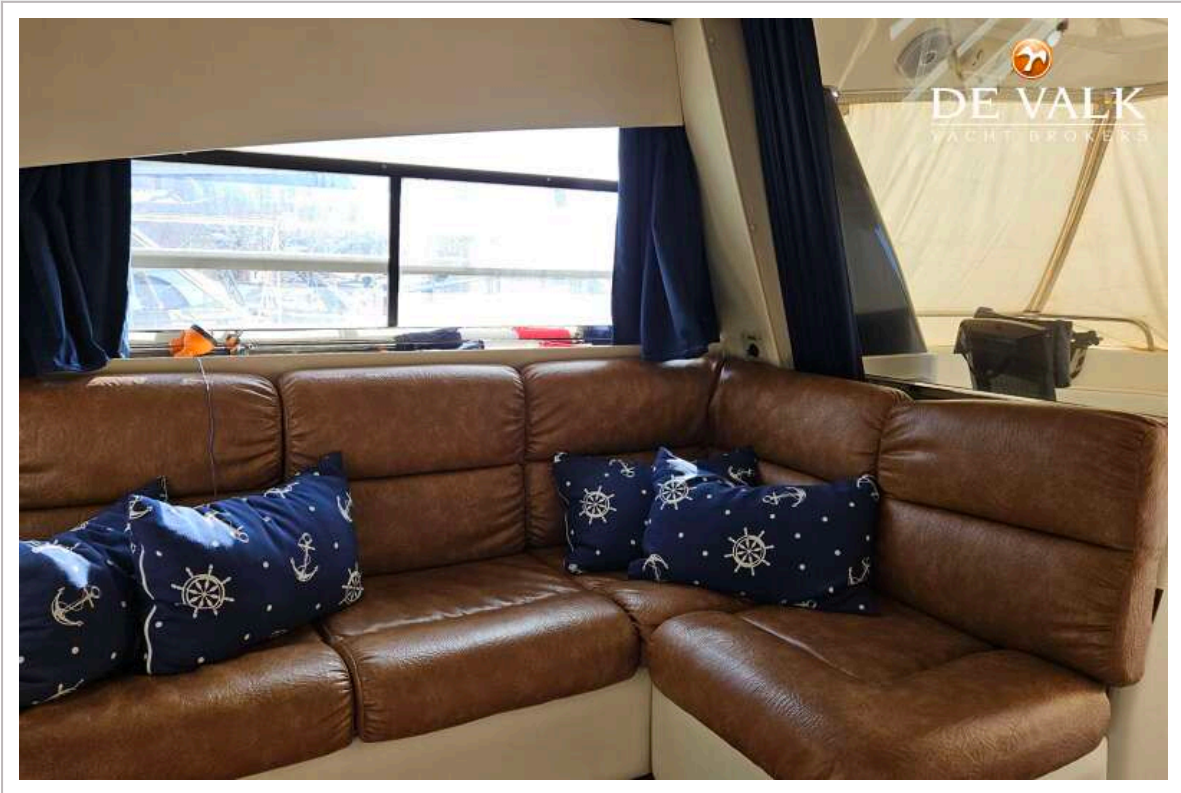




# SUNSEEKER 52 CARIBBEAN



SUNSEEKER 52 CARIBBEAN

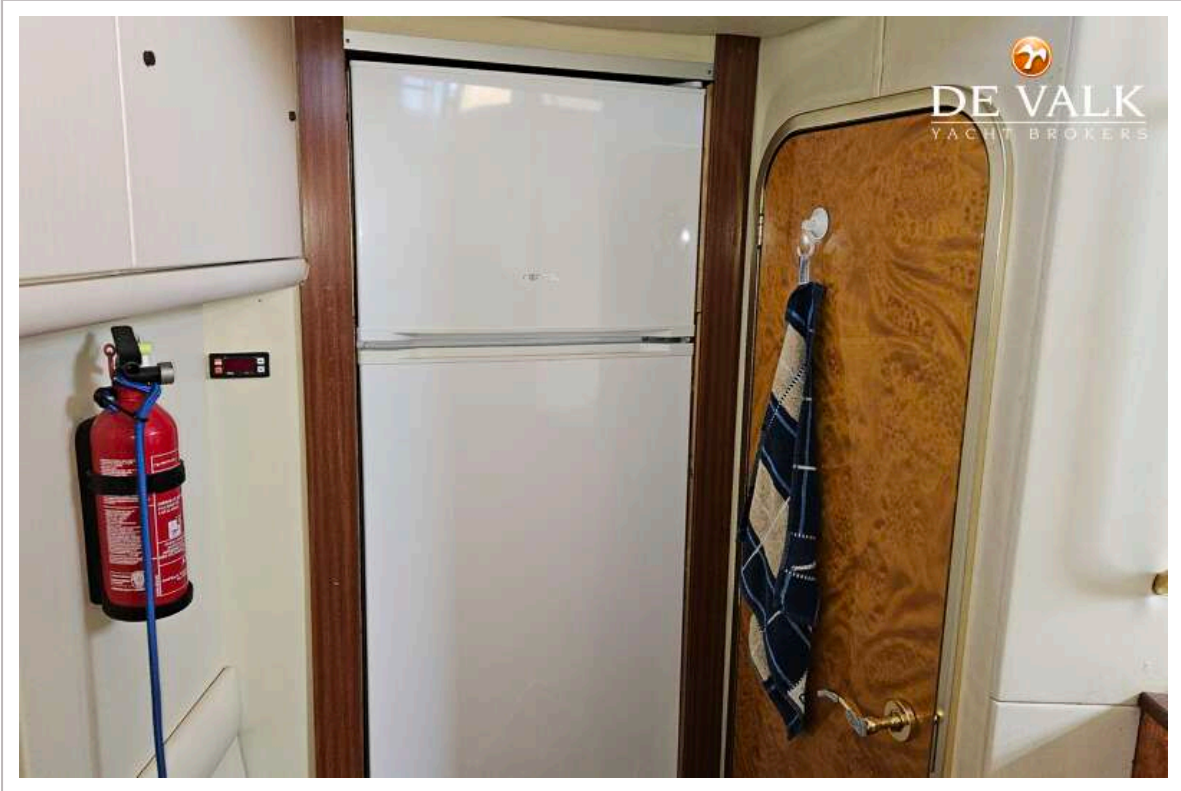




# SUNSEEKER 52 CARIBBEAN

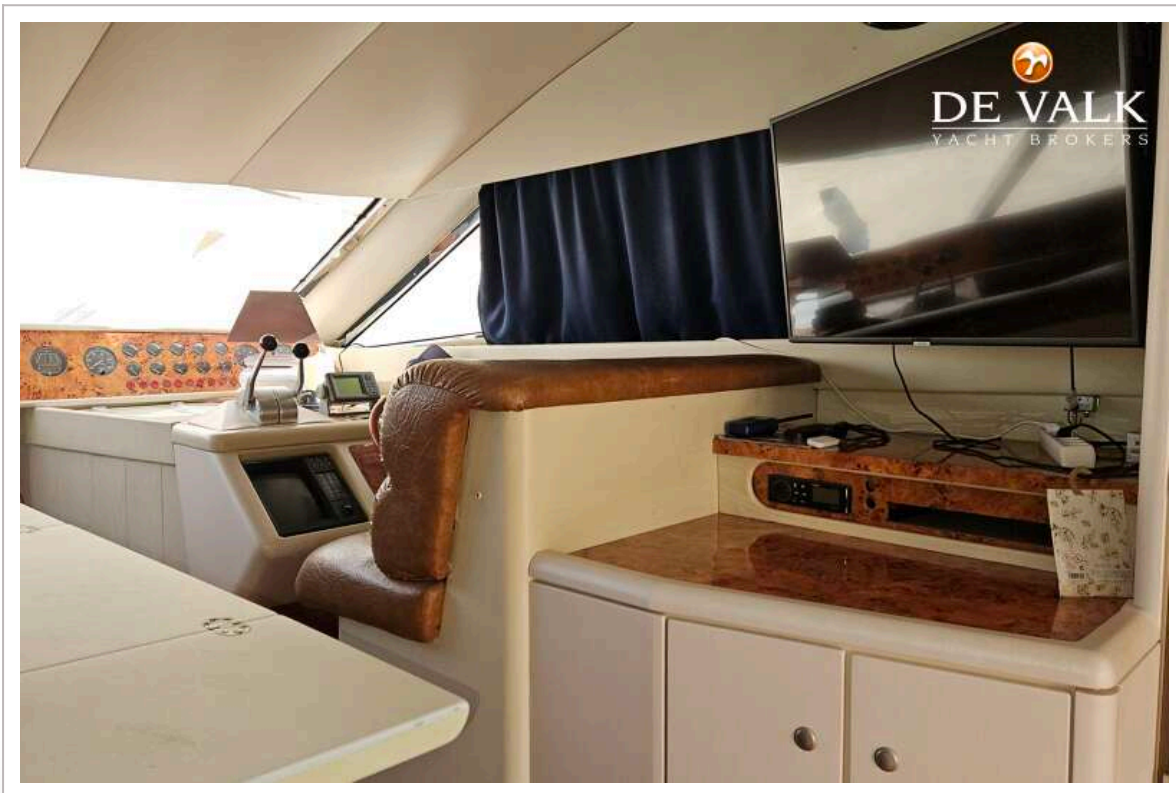
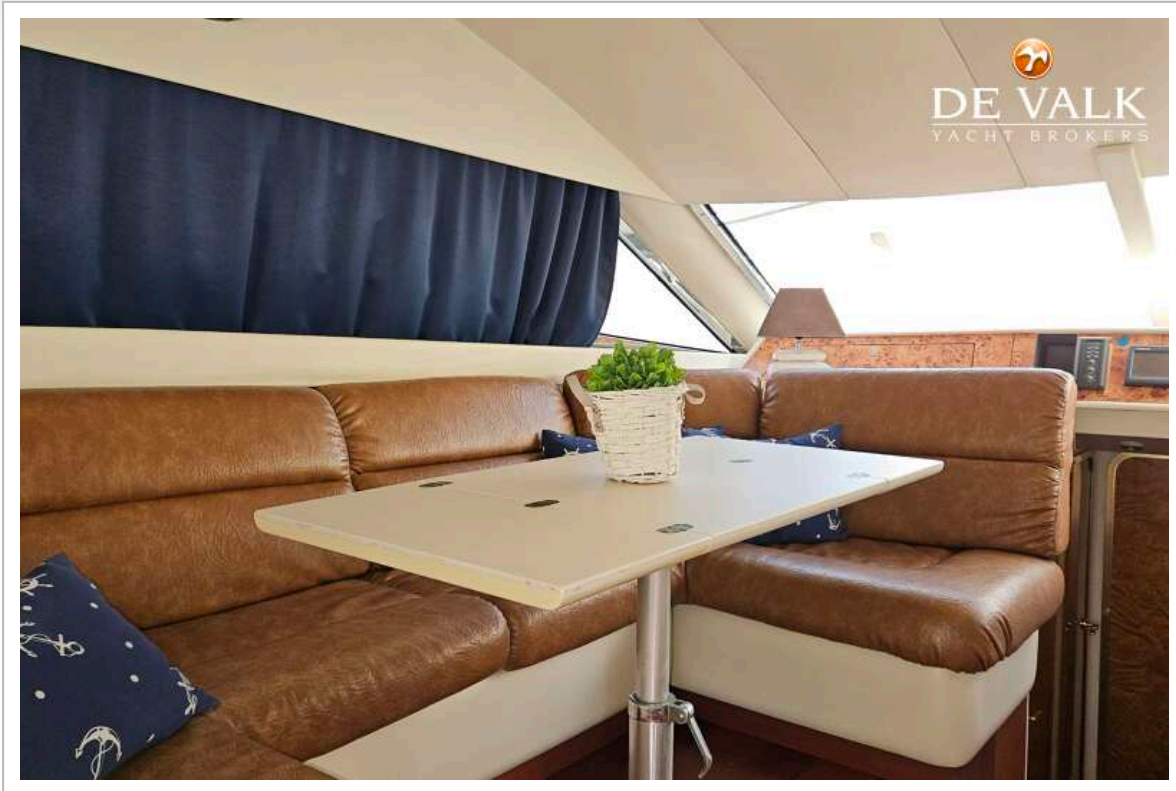


# SUNSEEKER 52 CARIBBEAN

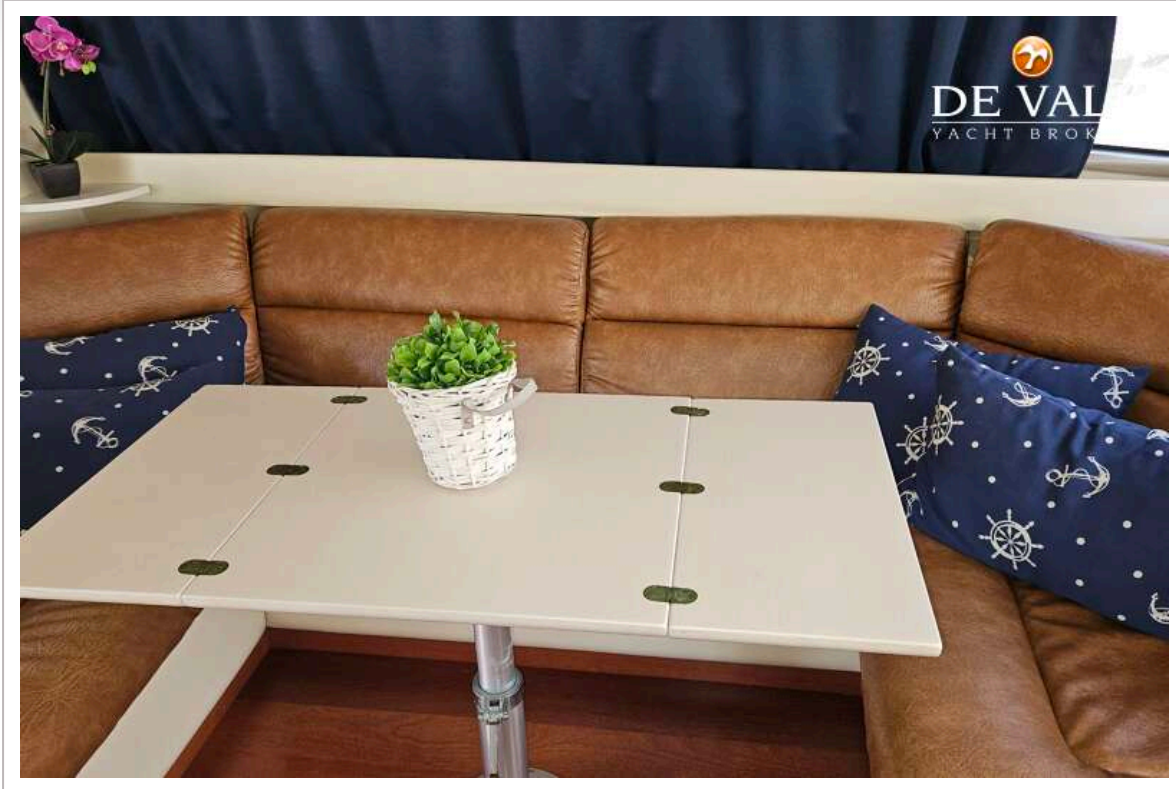




# SUNSEEKER 52 CARIBBEAN

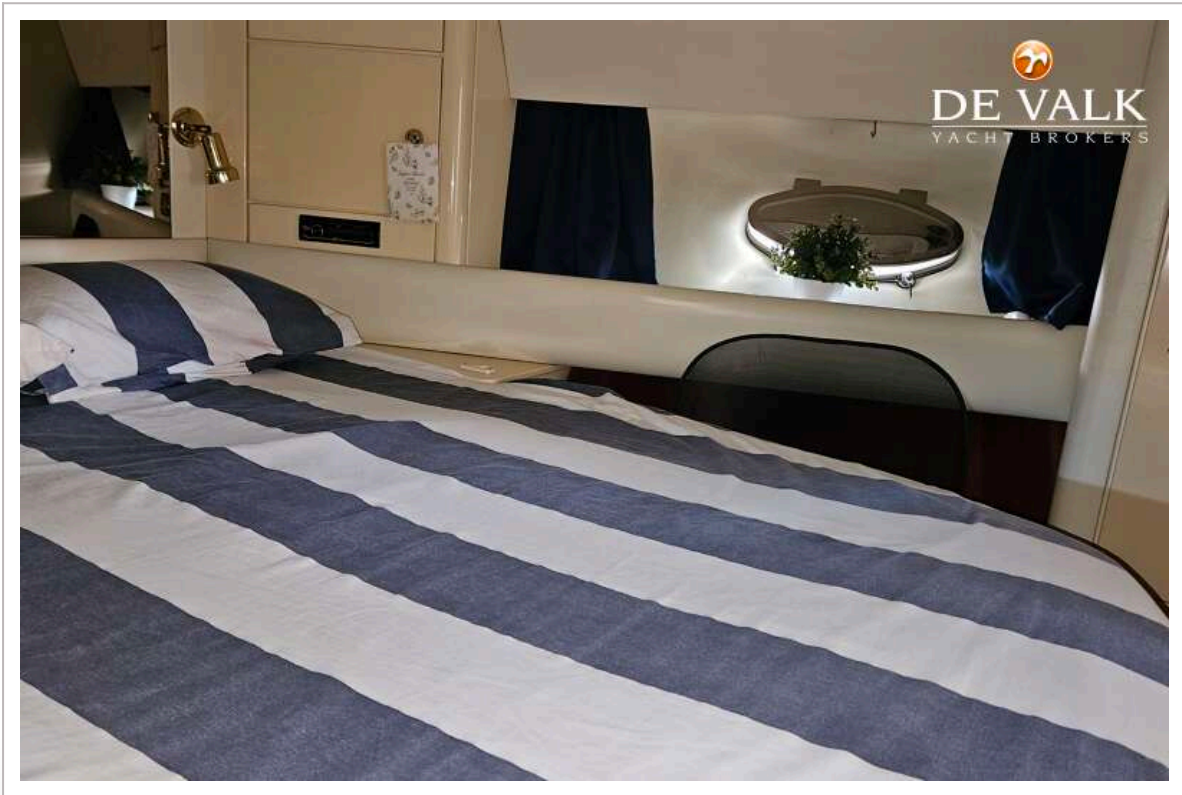
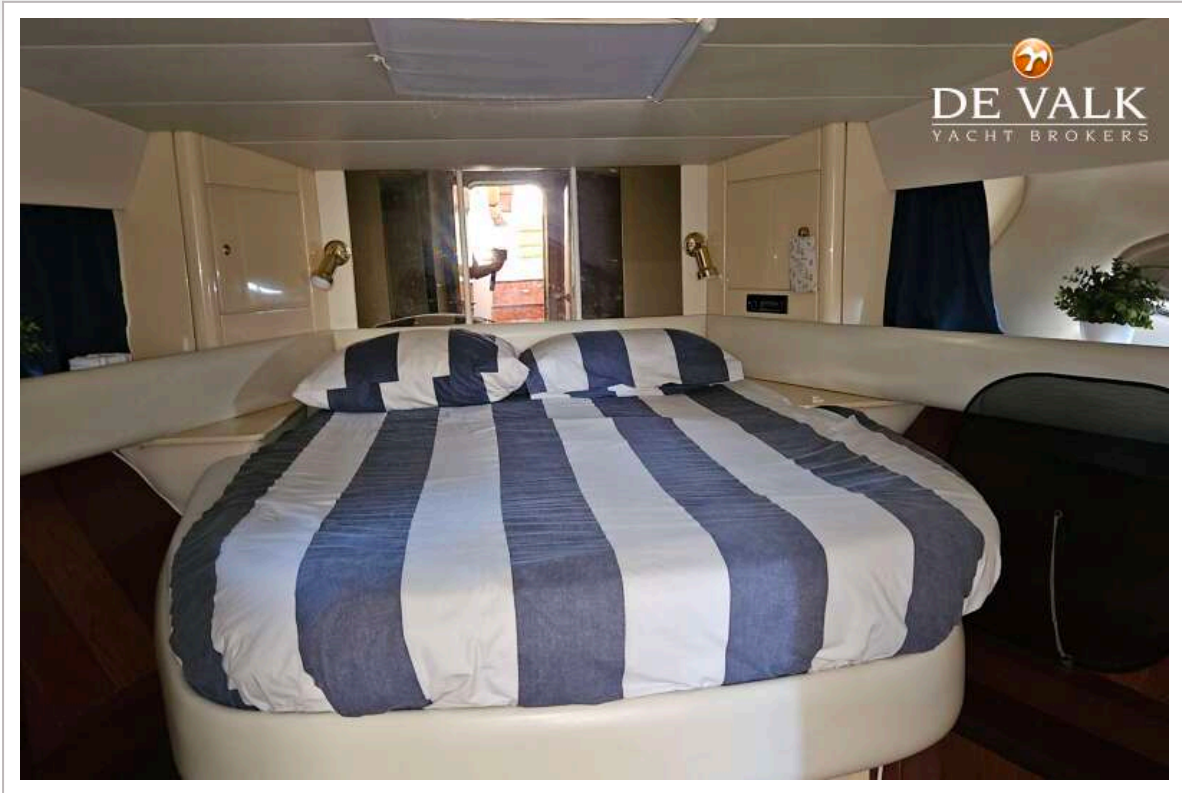


# SUNSEEKER 52 CARIBBEAN



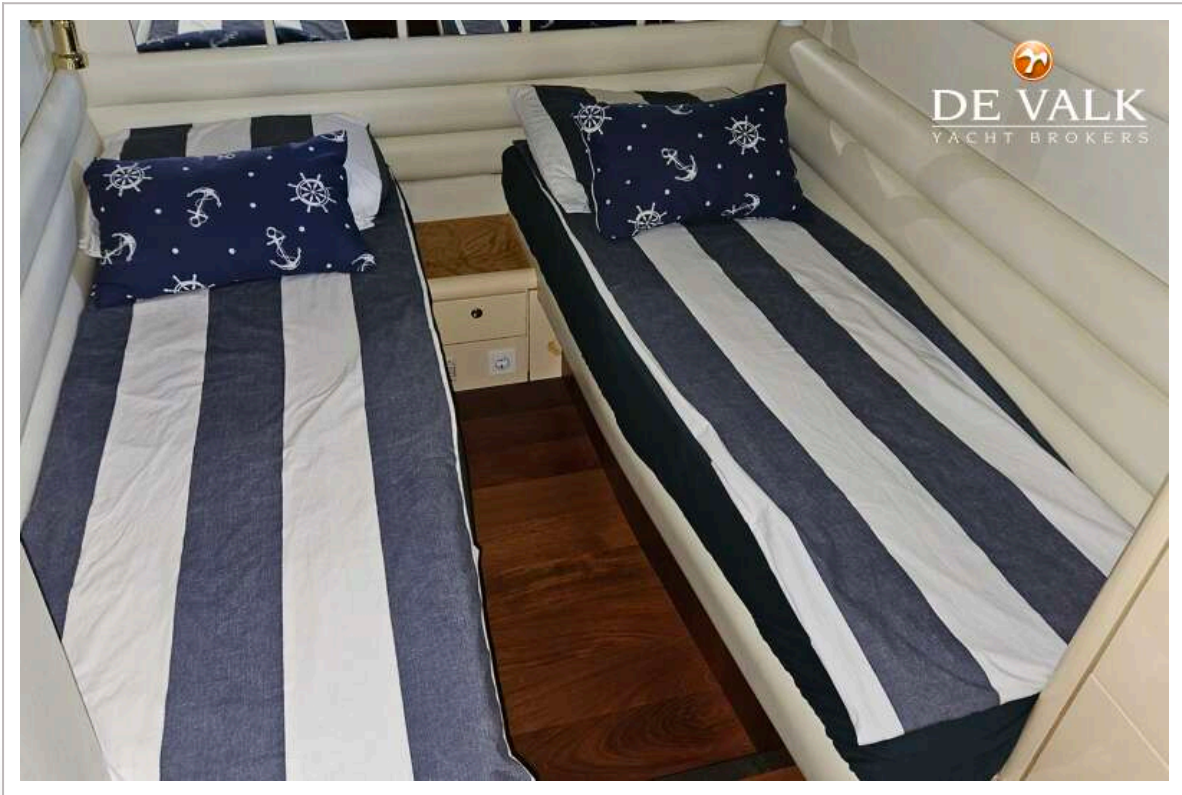
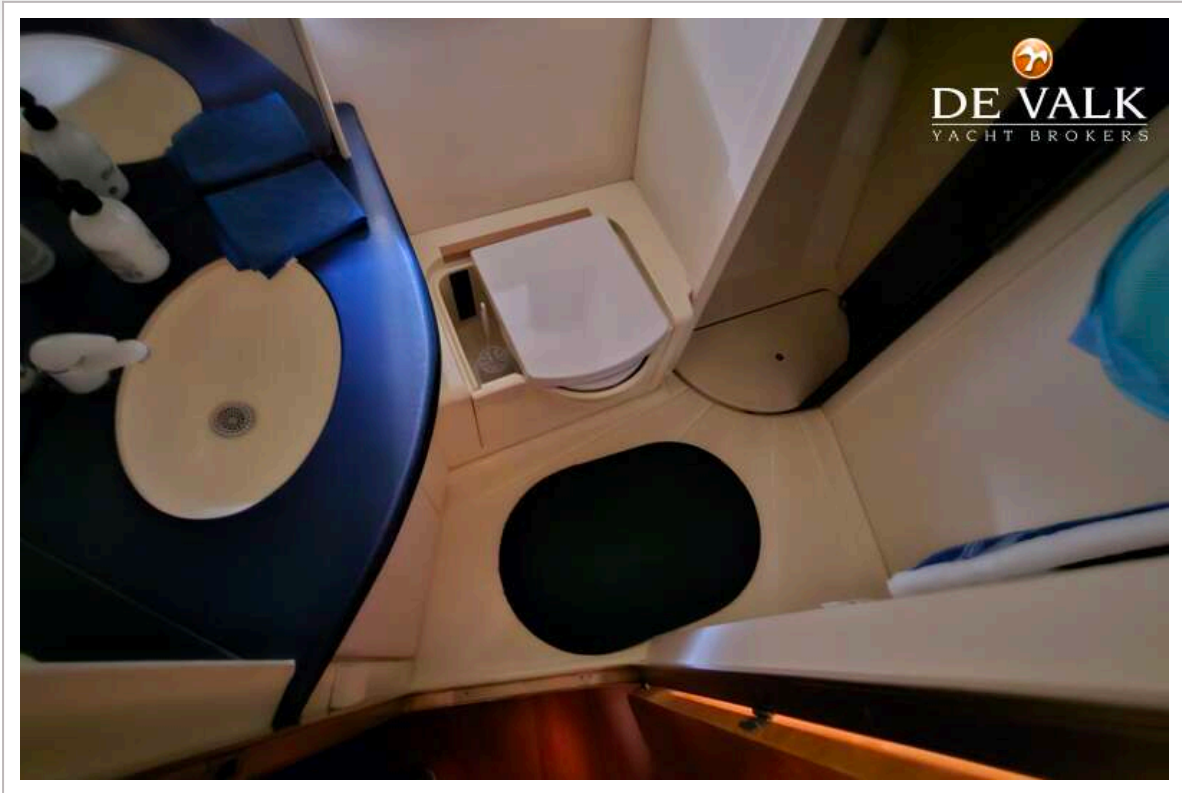


SUNSEEKER 52 CARIBBEAN

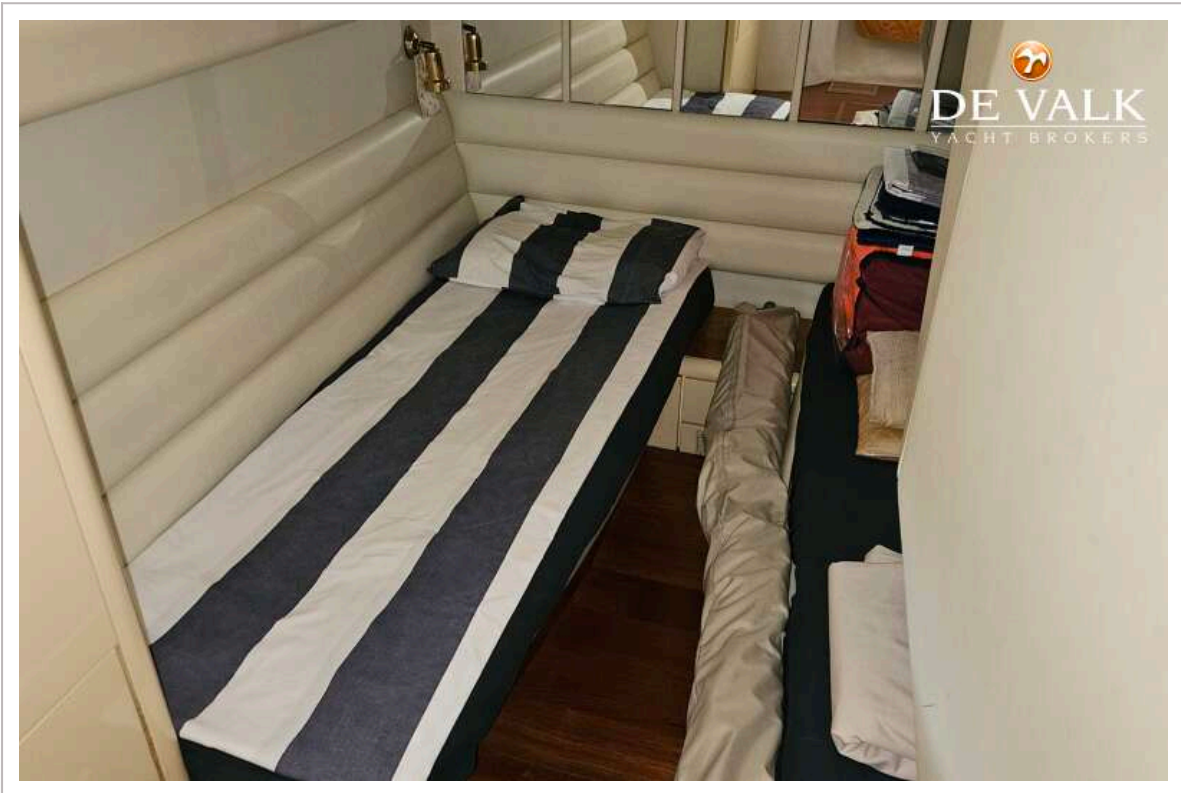




# SUNSEEKER 52 CARIBBEAN



SUNSEEKER 52 CARIBBEAN



# SUNSEEKER 52 CARIBBEAN

