



DE VALK

YACHT BROKERS



## HALLBERG RASSY 382



**DE VALK**  
YACHT BROKERS

## BROKER'S COMMENTS

The difference between the HR 38 and HR 382 is definitely more than one might think at first sight. The HR 382 is a more modern design. The hull lines are all-new, more contemporary, incorporating eight years more experience. The hull of the 382 is longer, wider, has a sharper entry, a flatter aft section, deeper, shorter and more efficient keel, as well as more efficient rudder design. "Liberta Boom" is in our sales marina and can be seen during office hours in Katwoude.

*Reinier van der Wolf*

## SPECIFICATIONS

<b>Dimensions</b>	11.60 x 3.60 x 1.80 (m)	<b>Builder</b>	Hallberg Rassy VARV AB
<b>Built</b>	1986	<b>Cabins</b>	2
<b>Material</b>	GRP	<b>Berths</b>	6
<b>Engine(s)</b>	1 x Volvo Penta MD30A diesel	<b>Hp/Kw</b>	62.00 (hp), 45.63 (kw)
<b>Asking price</b>	sold (VAT )	<b>Lying</b>	at sales office

## CONTACT

<b>Sales office</b>	De Valk Monnickendam	<b>Telephone</b>	+31 299 65 63 50
<b>Address</b>	Hoogedijk 6 1145 PM Katwoude The Netherlands	<b>E-mail</b>	monnickendam@devalk.nl

## DISCLAIMER

These particulars are given in good faith as supplied but cannot be guaranteed.



# HALLBERG RASSY 382

## GENERAL

<b>Model</b>	HALLBERG RASSY 382
<b>Type</b>	sailing yacht
<b>LOA (m)</b>	11,60
<b>LWL (m)</b>	9,60
<b>Beam (m)</b>	3,60
<b>Draft (m)</b>	1,80
<b>Headroom (m)</b>	1,90
<b>Year built</b>	1986
<b>Builder</b>	Hallberg Rassy VARV AB
<b>Country</b>	Sweden
<b>Designer</b>	Christoph Rassy & Olle Enderlein
<b>Displacement (t)</b>	9,5
<b>Ballast (tonnes)</b>	lead in GRP
<b>Hull material</b>	GRP
<b>Hull colour</b>	blue
<b>Hull shape</b>	S-bilged - semi
<b>Keel type</b>	long keel
<b>Superstructure material</b>	GRP
<b>Rubbing strake</b>	wood
<b>Deck material</b>	GRP
<b>Deck finish</b>	teak - (2015) - 15 mm. - new   nieuw   Neu
<b>Superstructure deck finish</b>	teak - (2015) - 15 mm - new   nieuw   neu
<b>Cockpit deck finish</b>	teak - (2023)
<b>Antifouling (year)</b>	(2023) - Awlgrip
<b>Dorades</b>	2x
<b>Window frame</b>	aluminium
<b>Window material</b>	polycarbonate
<b>Deckhatch</b>	4x "Moonlight"
<b>Portholes</b>	10x
<b>Insulation</b>	foam - Divinycell closed cell (above waterline)



<b>Radar arch</b>	non collapsible
<b>Fuel tank (litre)</b>	stainless steel - 185
<b>Level indicator (fuel tank)</b>	yes
<b>Freshwater tank (litre)</b>	stainless steel - 580
<b>Blackwater tank (litre)</b>	stainless steel - 49 (2008)
<b>Blackwater tank extraction</b>	deck extraction
<b>Wheel steering</b>	mechanical
<b>More info on hull</b>	Hull refurbishment and reinforcement by Koopmann (2015) cost 100.000 Euro

## ACCOMMODATION

<b>Cabins</b>	2
<b>Berths</b>	6
<b>Interior</b>	mahogany
<b>Floor</b>	wood
<b>Saloon</b>	L-seat + longitudinal bench
<b>Headroom saloon (m)</b>	1,90
<b>Heating</b>	diesel ducted hot air - Eberspacher D3L
<b>Chart table</b>	yes
<b>Aft Cabin</b>	yes
<b>Galley</b>	L-shaped
<b>Countertop</b>	plastic
<b>Sink</b>	stainless steel - 2x
<b>Cooker</b>	calor gas Eno
<b>Oven</b>	Eno
<b>Fridge</b>	toploader Danfoss
<b>Hot water system</b>	220V + engine - Isotemp
<b>Water pressure system</b>	electrical
<b>Manual and/or foot pump</b>	yes
<b>Owners cabin</b>	twin single
<b>Wardrobe</b>	hanging



<b>Toilet</b>	shared
<b>Toilet system</b>	electric - Jabsco Quiet Flush (2008)
<b>Wash basin</b>	in the bathroom
<b>Shower</b>	shared
<b>Guest cabin 1</b>	double bed
<b>Bed length (m)</b>	2,00
<b>Wardrobe</b>	hanging

## MACHINERY

<b>No of engines</b>	1
<b>Make</b>	Volvo Penta
<b>Type</b>	MD30A
<b>HP</b>	62
<b>kW</b>	45.63
<b>Fuel</b>	diesel
<b>Year installed</b>	1986
<b>Year of overhaul</b>	2014
<b>Maximum speed (kn)</b>	8
<b>Cruising speed (kn)</b>	6
<b>Consumption (l/hr)</b>	3
<b>Engine cooling system</b>	freshwater heat exchanger
<b>Drive</b>	shaft
<b>Shaft seal</b>	yes
<b>Engine controls</b>	bowden cable
<b>Gearbox</b>	mechanical
<b>Bowthruster</b>	electric - Sidepower SE80/185T-12v (2008)
<b>Exhaust</b>	watercooled
<b>Propeller type</b>	folding - MaxProp (2009)
<b>Propeller blades</b>	3
<b>Propeller shaft material</b>	stainless steel
<b>Shaft lubrication</b>	water



Manual bilge pump	Whale
Electric bilge pump	Johnson
Start battery	yes
Service battery	yes
Bowthruster battery	yes
Battery monitor	yes
Battery charger/inverter	Mastervolt
Wind generator	Superwind 350W
Solar panel	240W
Shorepower	with cable
Auto positioning system	yes
Extra info	Actisense engine Monitoring system (2023)
Extra info	Sidepower radio remote for bowthruster + windlass (2008)

## NAVIGATION

Compass	Venus
Depth sounder	Raymarine
Log	Raymarine
Windset	Raymarine
VHF	Raymarine
VHF handheld	Icom
Autopilot	Raymarine
Rudder angle indicator	yes
Radar/GPS/plotter	Raymarine Axiom '12 (2022)
Personal computer	On board computer
AIS receiver	Raymarine AIS 350
AIS transponder	yes
Radio receiver	yes
EPIRB	yes
Navigation lights	yes
Extra info	Seatalk NG / NMEA 2000



## Extra info

Transmission of all data via Wifi enabling control and monitoring of the entire ship via tablet. - Wifi router | Satelite internet

## EQUIPMENT

Fixed windscreen	yes
Sprayhood	(2024)
Cockpit cover	yes
Cockpit cushions	yes
Cockpit table	(2023)
Boarding ladder	stainless steel
Anchor	Rocna - 25 kg.
Anchor 2	Delta
Anchor chain	yes
Chain counter	yes
Windlass	electrical - Quick
Deck wash	yes
Dinghy	inflatable
Outboard	yes
Outboard support	yes
Sea railing	wire
Grab rail (superstructure)	teak
Pushpit	yes
Pulpit	yes
Life raft	yes
Last life raft survey	2022
Lifejackets	yes
Safety lines on deck	yes
Binocular	yes
Radar reflector	Echomax
Fenders	yes
Mooring lines	yes



Spare parts	yes
TV	Sony
Radio-cd player	MP3 player IPOD connection Bluetooth connectivity
Speakers in salon	yes
Clock - barometer	(2023)
Fire extinguisher	4x

## RIGGING

Rigging	sloop
Standing rigging	wire - 2014   replaced   vernieuwd   erneuert
Brand mast	Reckmann
Material mast	aluminium
Spreaders	2x
Mainsail	yes
Stoway mast	Reckmann
Cutterstay	yes
Genoa	yes
Genoa furler	Reckmann
Stormjib	yes
Reefing System	main in-mast furling
Backstay adjuster	mechanical - Sailtec
Boomvang	mechanical and tackle - Seldén Rodkicker
Primary sheet winch	2x Lewmar 52 CST 2-speed (in cockpit)
Secondary sheet winch	2x Lewmar 43 CST 2-speed (in cockpit)
Halyard winches	1x mounted on mast Lewmar 40 2x mounted on mast Lewmar 40 single speed
Spi-pole	yes





# HALLBERG RASSY 382



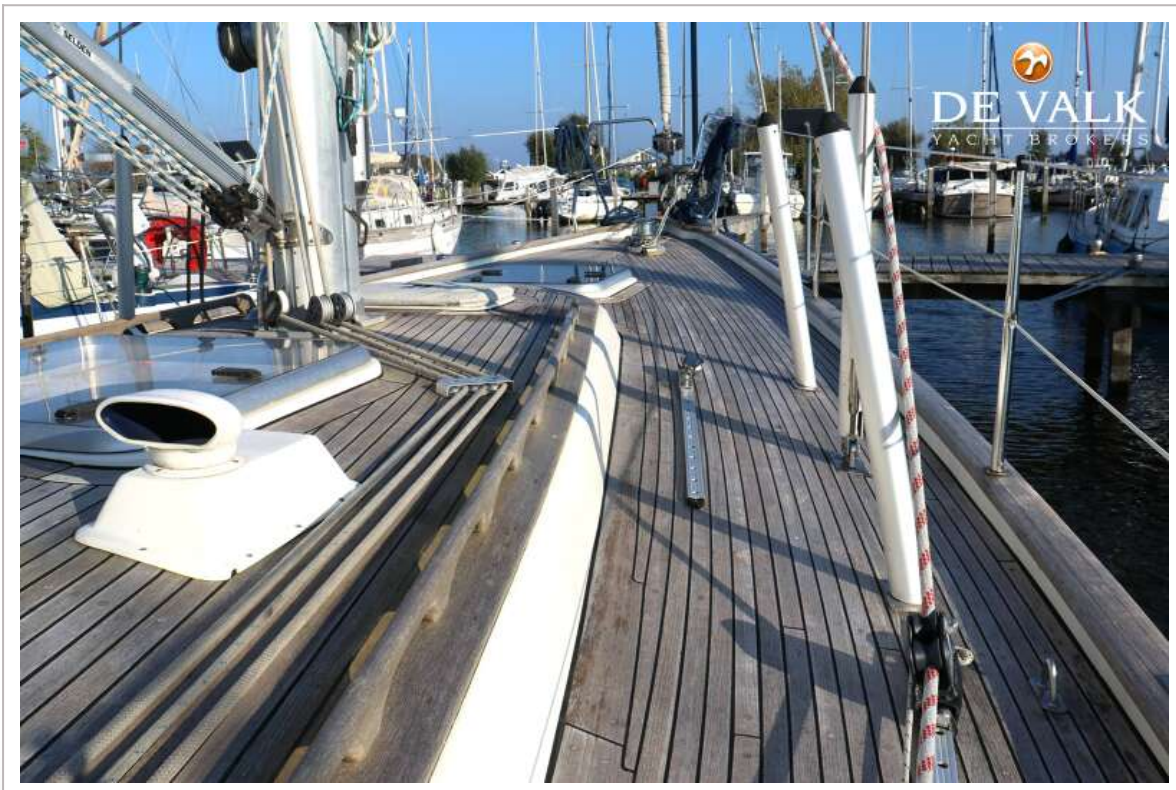
# HALLBERG RASSY 382



# HALLBERG RASSY 382



# HALLBERG RASSY 382



# HALLBERG RASSY 382



# HALLBERG RASSY 382



# HALLBERG RASSY 382



# HALLBERG RASSY 382

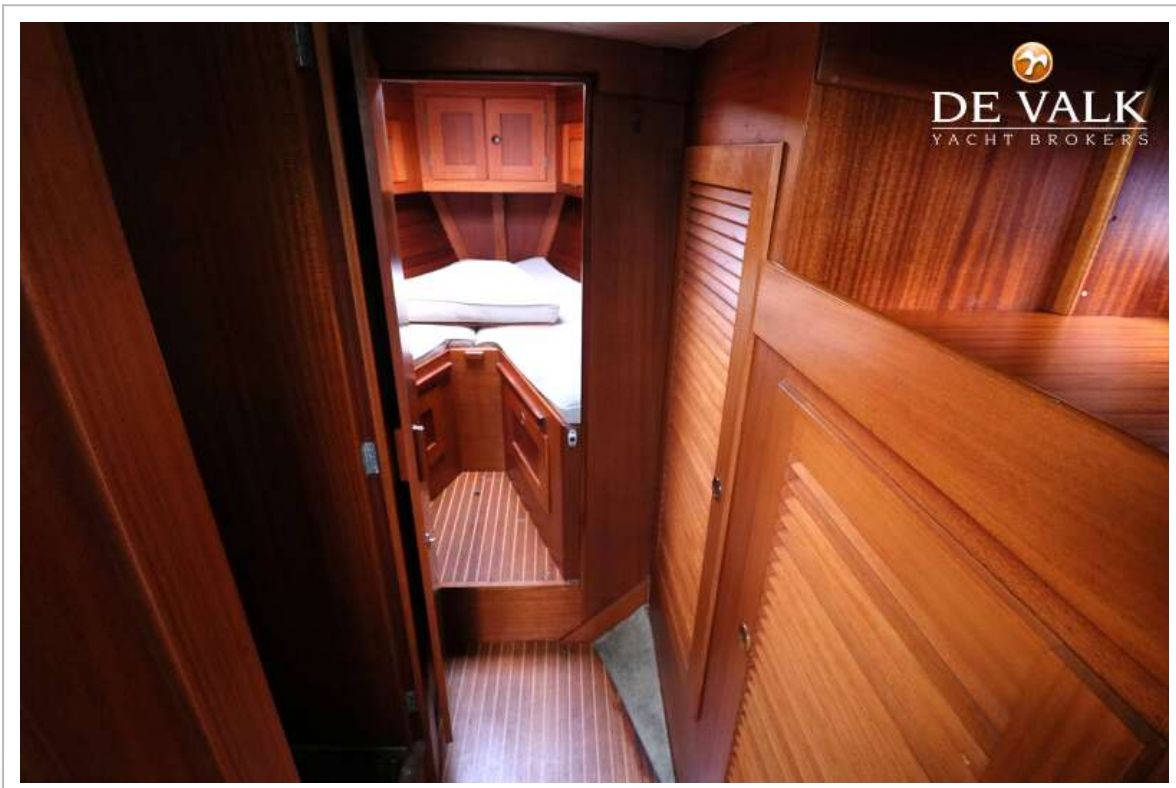




# HALLBERG RASSY 382



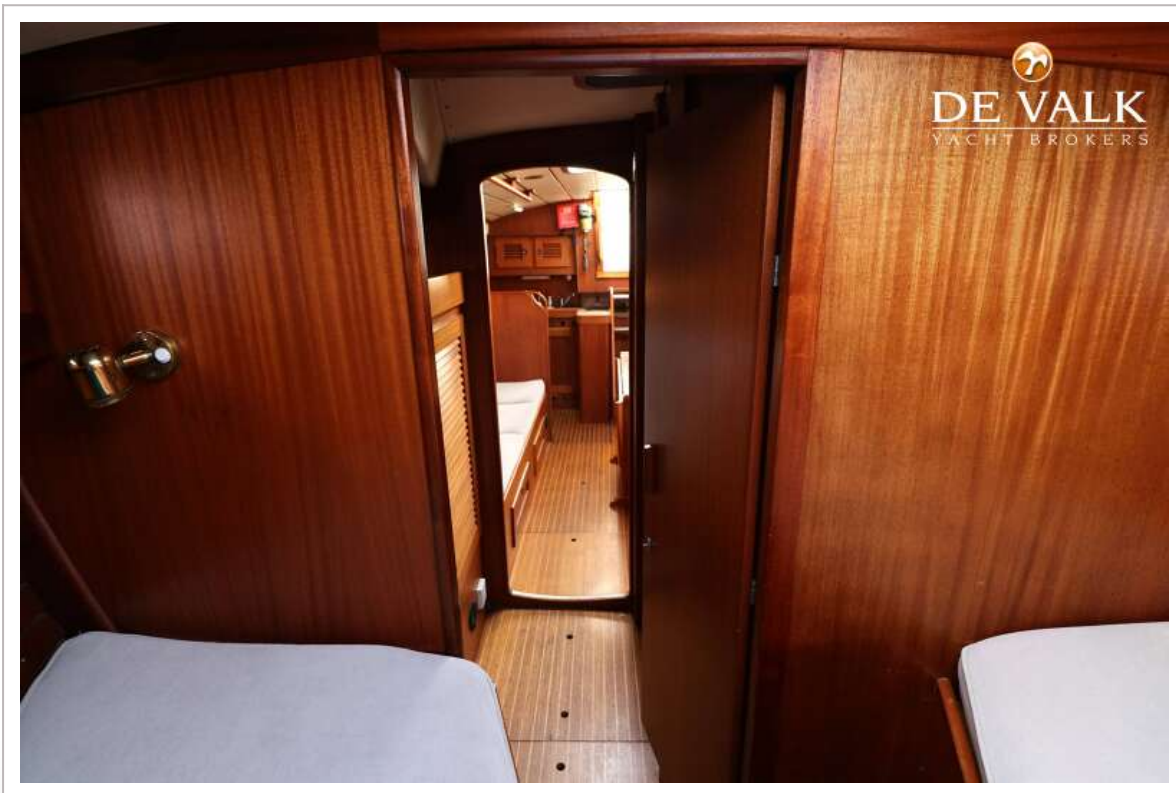
# HALLBERG RASSY 382



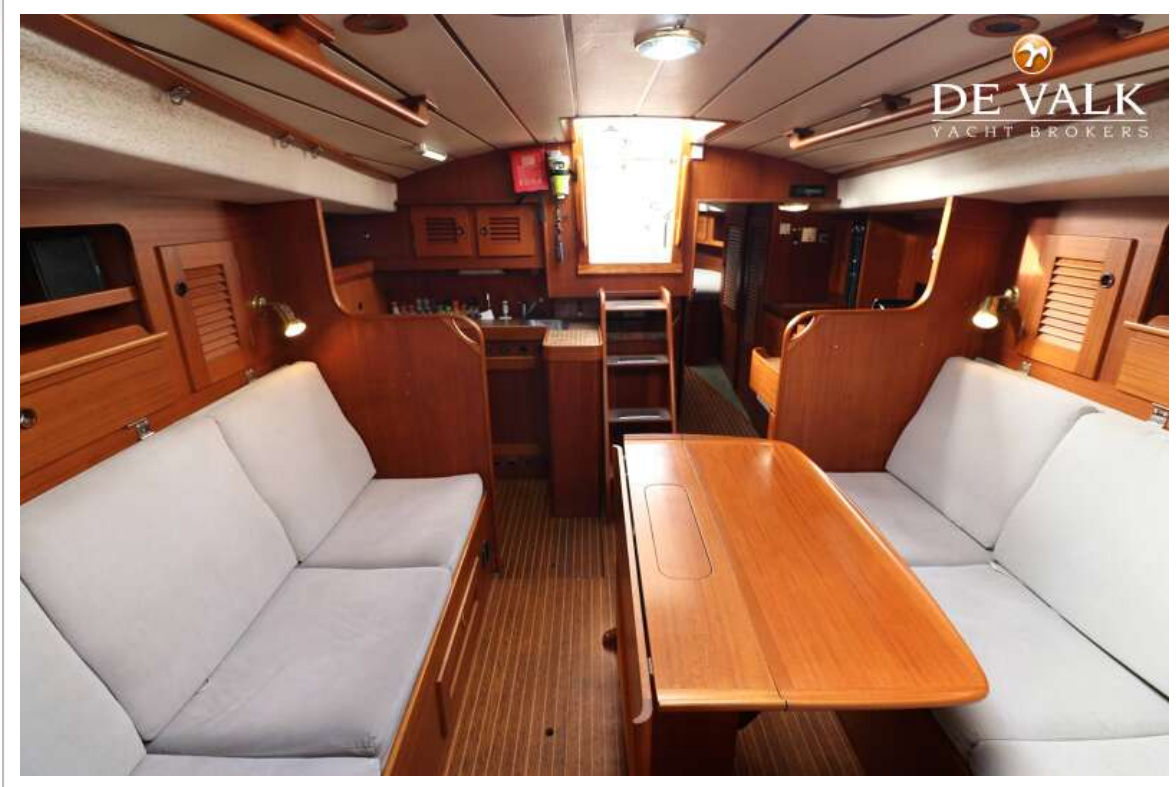
# HALLBERG RASSY 382



# HALLBERG RASSY 382



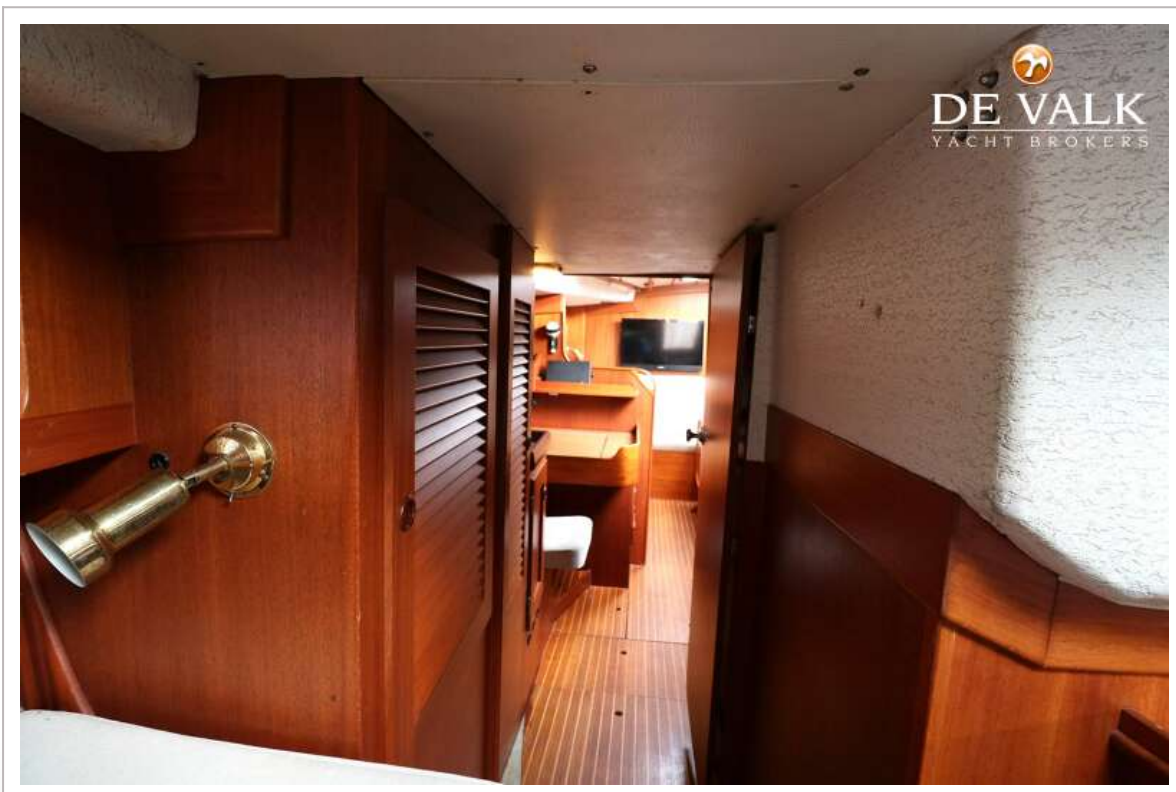
# HALLBERG RASSY 382



# HALLBERG RASSY 382



# HALLBERG RASSY 382

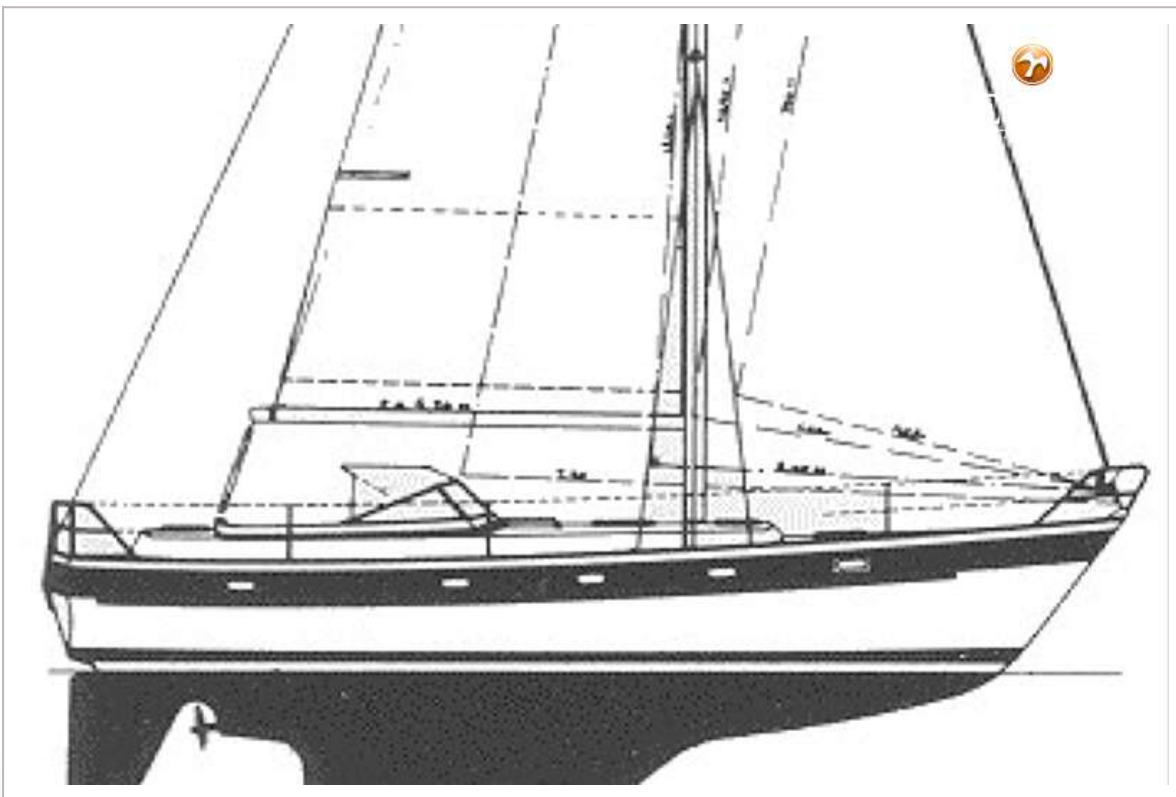


# HALLBERG RASSY 382





# HALLBERG RASSY 382



# HALLBERG RASSY 382

