



DE VALK
YACHT BROKERS



HANSE 508 EXCLUSIVE



DE VALK
YACHT BROKERS

BROKER'S COMMENTS

"The way of water" Start to enjoy life in the rhythm of the sea and experience life's adventures onboard this exclusive Hanse 508. Fully loaded with a long list of useful options and improvements on an already very well designed fast cruising yacht. From her first owner only sailed for family cruising, now up for sale for a better than new Hanse that comes with the same options. 3 Cabin owner version layout with a shallow draft keel that gives you more possibilities to explore those horizons where a standard yacht cannot follow. So it is up to you to choose you next bay area to drop anchor in.

Marc Weijenberg

SPECIFICATIONS

Dimensions	15.55 x 4.75 x 1.98 (m)	Builder	Hanse Yachts GmbH
Built	2021	Cabins	3
Material	GRP	Berths	6
Engine(s)	1 x Yanmar 4JH80 diesel	Hp/Kw	80 (hp), 58.88 (kw)
Asking price	€ 525.508 (VAT Paid)	Lying	The Netherlands

CONTACT

Sales office	De Valk Thuishaven	Telephone	+31 35 5829042
Address	Peperstraat 7 1411 PX Naarden The Netherlands	E-mail	thuishaven@devalk.nl

DISCLAIMER

These particulars are given in good faith as supplied but cannot be guaranteed.



GENERAL

Model	HANSE 508 EXCLUSIVE
Type	sailing yacht
LOA (m)	15,55
LWL (m)	13,54
Beam (m)	4,75
Draft (m)	1,98
Air draft (m)	22,05
Headroom (m)	2,00
Year built	2021
Launched	2022
Builder	Hanse Yachts GmbH
Country	Germany
Designer	Judel & Vrolijk / Hanse Yacht Design
Displacement (t)	15,1
Ballast (tonnes)	cast iron and lead 4,43
CE norm	A
Hull material	GRP
Hull colour	white
Hull shape	round-bilged
Keel type	bulb keel
Superstructure material	GRP
Rubbing strake	Teak
Deck material	GRP
Deck finish	non-skid moulded in
Superstructure deck finish	non-skid moulded in
Cockpit deck finish	Flexi-teek
Antifouling (year)	2025
Window material	polycarbonate
Deckhatch	8 x
Portholes	yes



Fuel tank (litre)	polyethylene 1 x 280
Freshwater tank (litre)	polyethylene 630
Blackwater tank (litre)	polyethylene 2 x 60
Blackwater tank extraction	deck extraction + uw line
Wheel steering	cable steering Jefa Steering twin pedestals
Emergency tiller	yes
Extra info	Ceramic coating hull for more UV protection. The stern has a graphical wrap which can be easily removed if wanted.
Extra info	Lumishore led underwater lighting (2023)

ACCOMMODATION

Cabins	3
Berths	6
Interior	Modern
Layout	master cabin forward with ensuite facilities, two guestcabins aft with their own bathrooms
Headroom saloon (m)	2,00
Heating	central hot water Eberspaecher Hydronic (diesel)
Air-conditioning	reverse cycle airco Dometic 28000 btu in all cabins
Chart table	yes
Aft Cabin	2 x
Dinette	with electric high-low table 2,31 x 1,75 mtr
Galley	yes
Countertop	Composite, 2,58 x 0,60 mtr
Sink	stainless steel 2 x
Cooker	calor gas Eno 3 burner
Oven	calor gas Eno
Fridge	Vitrifrigo (2 x drawer)
Hot water system	220V + engine Quick 40 ltr (2023)
Water pressure system	electrical
Owners cabin	double bed
Bed length (m)	2,00 x 1,60 mtr, headroom 2,00 mtr



Wardrobe	hanging/drawers/shelves
Bathroom	en suite (headroom 2,00 mtr)
Toilet	en suite
Toilet system	electric "Geberit Shower Clean" / bidet
Wash basin	in the bathroom
Shower	separate
Extra info	All cabins have luxurious, comfortable mattress's and Egyptian linnen bedware.
Guest cabin 1	yes
Bed length (m)	2,00 x 1,60 mtr, headroom 2,00 mtr
Wardrobe	hanging and shelves
Bathroom	en suite II
Toilet	en suite
Toilet system	manual
Wash basin	in the bathroom
Shower	en suite
Guest cabin 2	yes
Bed length (m)	2,00 x 1,60 mtr, headroom 2,00 mtr
Wardrobe	hanging and shelves
Bathroom	en suite III (headroom 1,95 mtr)
Toilet	en suite
Toilet system	manual
Wash basin	in the bathroom
Shower	en suite
Extra info	All cabins have both heating and airconditioning.
Washing machine/dryer combi	Miele WT1 auto-dispenser (2023) in seperate washroom to portside
Extra info	There is an abundance of light and ventilation in the interior. Numerous deckhatches, portholes etc that can be opened.

MACHINERY

No of engines	1
----------------------	---



HANSE 508 EXCLUSIVE

Make	Yanmar
Type	4JH80
HP	80
kW	58.88
Fuel	diesel
Year installed	2021
Maximum speed (kn)	8
Cruising speed (kn)	7
Consumption (l/hr)	4
Engine hours	580
Engine cooling system	freshwater heat exchanger
Drive	sail-drive
Saildrive seal	Yanmar (double seal system)
Gearbox	mechanical Yanmar Saildrive
Engine controls	electrical Yanmar
Bowthruster	electric Quick (retractable)
Sternthruster	electric Quick (retractable)
Exhaust	watercooled
Propeller type	feathering
Propeller blades	3
Manual bilge pump	yes
Electric bilge pump	yes
Bilge alarm	yes
Electrical installation	12v/24v/220v
Start battery	1 x 95ah
Service battery	3 x Mastervolt 12v/6 kWh Lithium Pack (2023)
Bowthruster battery	2 x 12v (2021)
Sternthruster battery	2 x 12v (2021)
Battery monitor	Hanse
Inverter	yes
Battery charger/inverter	Mastervolt Mass Compi Pro 12v/3000watt/150amp (2023)
Solar panel	3 x 106watt plus Mastervolt controller (2023)



Shorepower	with cable
Watermaker	Schenker Smart 60 (2023)
Extra info	Extra 240ah alternator (2023) on main engine for faster charging, no need for an extra generator set.

NAVIGATION

Compass	2 x Silva
Electric compass	via autopilot
Multi control display	2 x B&G Triton ²
Depth sounder	B&G
Log	B&G
Windset	B&G
VHF	B&G VHF V60, at chart table, incl. wireless remote handset H60
Autopilot	B&G autopilot with Triton ² control unit and Precision 9 compass
Rudder angle indicator	via the autopilot
Radar	B&G Halo20+ broadband radar
GPS	B&G
Plotter	2 x B&G Zeus ³ S9 (9" displays)
PC connection	via the onboard wifi the B&G Zeus ³ network can be accessed for various functions (tablet or pc)
Wifi antenna	yes
Electronic chart(s)	yes
AIS transponder	B&G AIS Class B
EPIRB	Ocean Signal Epirb 1 (exp 2033)
Camera	4 x via onboard wifi to app or tv system
Navigation lights	Aqua Signal 3 color led masthead light plus extra led decklights (2023)

EQUIPMENT

Sprayhood	yes
Cockpit cover	sloped version (2022)



Bimini	yes
Sun awning	from boom to towrail (2023)
Cockpit cushions	yes
Cockpit table	2 x electric high-low function with extra cushions for sunbathing
Bathing platform	fold-down
Boarding ladder	stainless steel
Gangway	aluminium
Deck shower	hot & cold water
Anchor	Delta 25kg
Anchor chain	60 mtr
Windlass	electrical Quick 24v/1000watt (+ remote)
Dinghy	inflatable Highfield Ultralite 310 (2023)
Outboard	Torqueedo Travel 1103 electric (2023)
Sea railing	wire
Railing side opening gates	2 x
Pushpit	yes
Pulpit	yes
Lifejackets	5 x
Safety harness	1
Lifebuoy	yes
Safety lines on deck	2 x
Fenders	yes
Mooring lines	yes
Spare parts	spare props for bow- and sternthruster and other spares
TV	Samsung 43" with amplifier and speaker (2022)
Radio	Sonos onboard system
Cockpit speakers	yes
Speakers in salon	yes
Fire extinguisher	3 x
Latest extinguisher survey	(2021)
Extinguisher in engine room	(2021)



RIGGING

Rigging	fractional
Standing rigging	yes
Brand mast	Seldén
Material mast	aluminium
Spreaders	2 x set
Mainsail	Elvstrom furling laminate AC5 upgrade with vertical battens
Jib	Elvström laminate AC5 upgrade (self-tacking)
Genoa furler	Furlex 404S
Code Zero	Custom made 151m2 including Furlex furler (2023)
Self tacking jib installation	Seldén
Reefing System	main in-mast furling
Backstay adjuster	yes
Boomvang	mechanical Seldén Rodkicker
Secondary sheet winch	2 x Lewmar 55S
Multifunctional winches	halyard/sheet winches 2 x electric Lewmar 55ST
Extra info	new and improved running rigging (2023)



HANSE 508 EXCLUSIVE



HANSE 508 EXCLUSIVE



HANSE 508 EXCLUSIVE



HANSE 508 EXCLUSIVE



HANSE 508 EXCLUSIVE



HANSE 508 EXCLUSIVE



HANSE 508 EXCLUSIVE



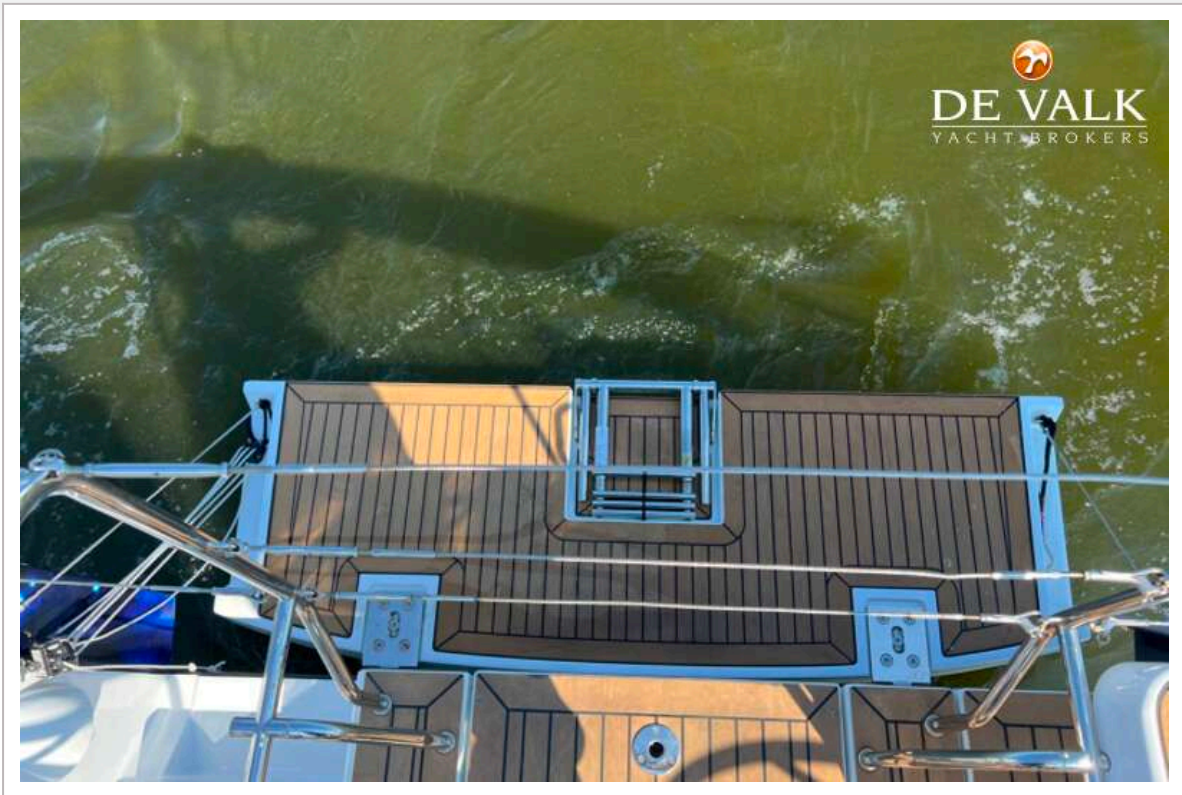
HANSE 508 EXCLUSIVE



HANSE 508 EXCLUSIVE



HANSE 508 EXCLUSIVE



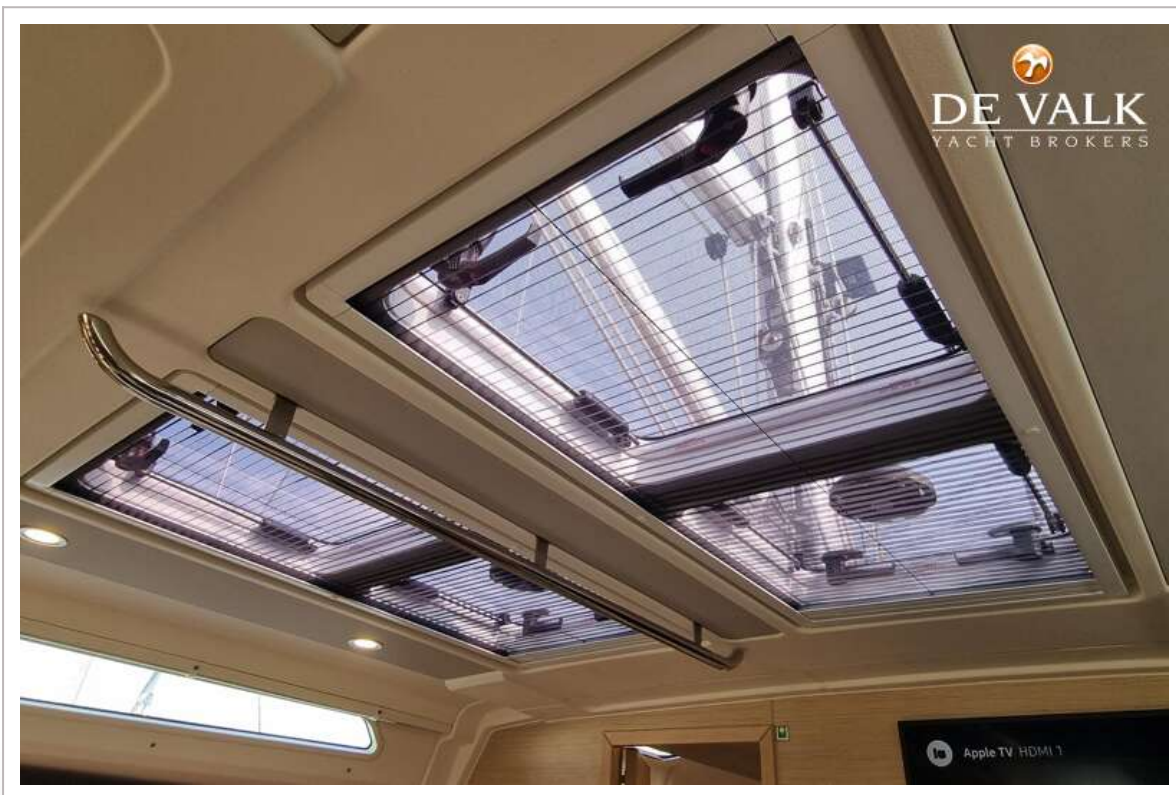
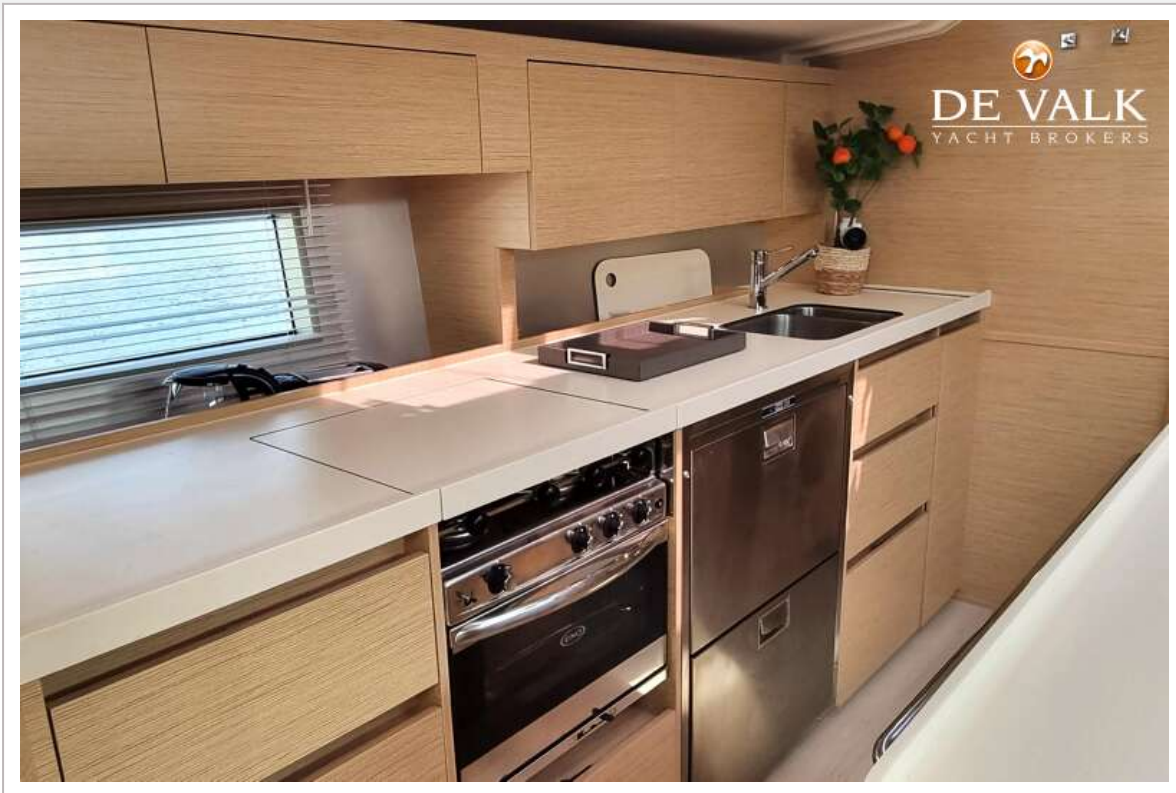
HANSE 508 EXCLUSIVE



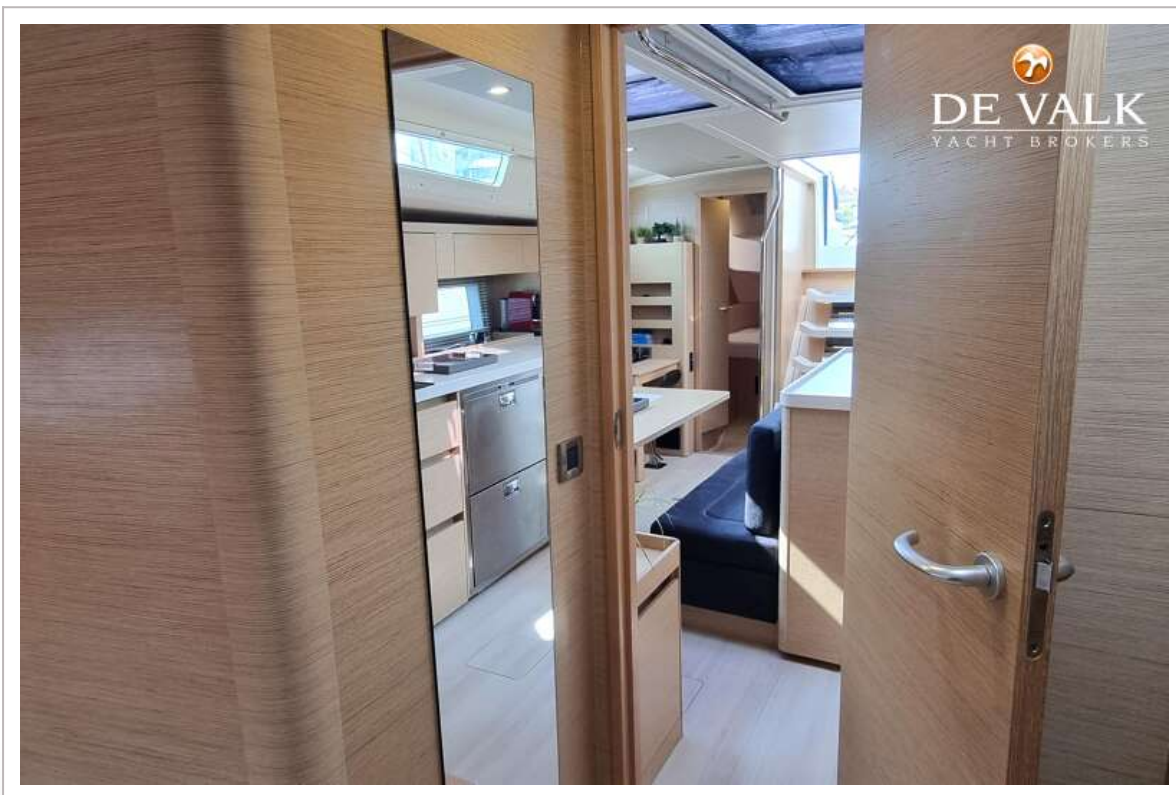
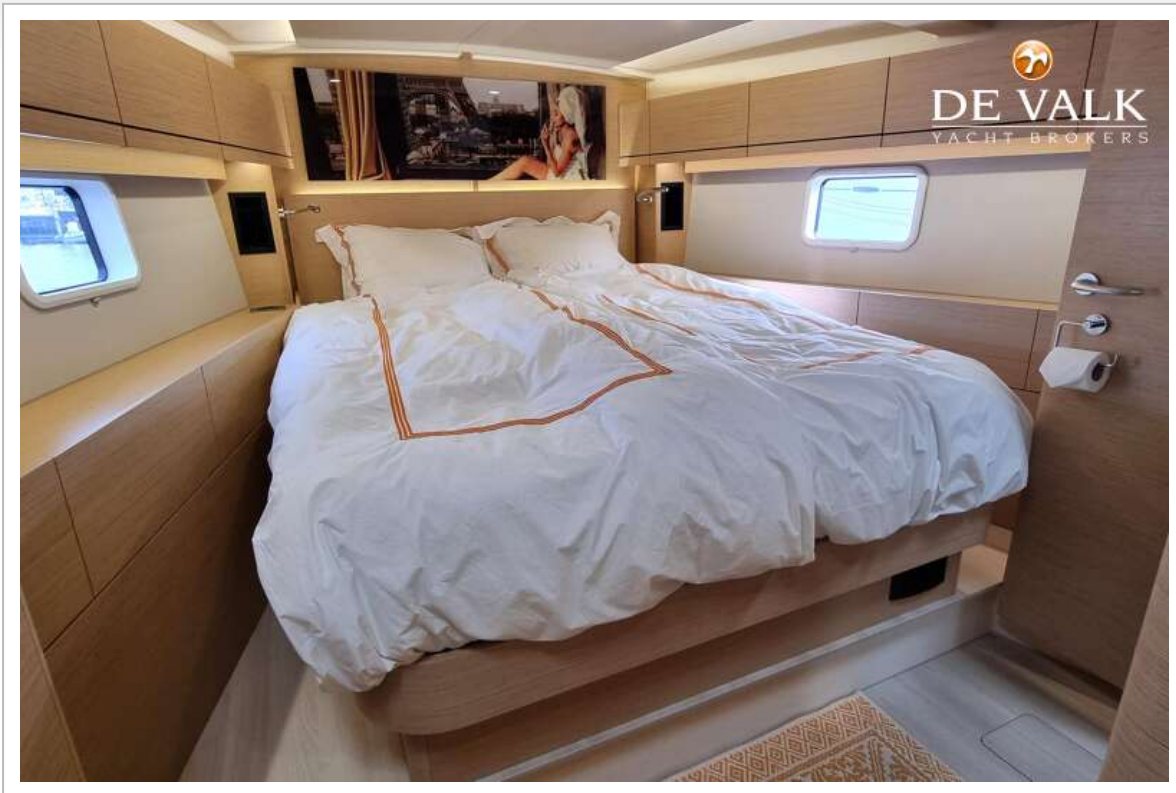
HANSE 508 EXCLUSIVE



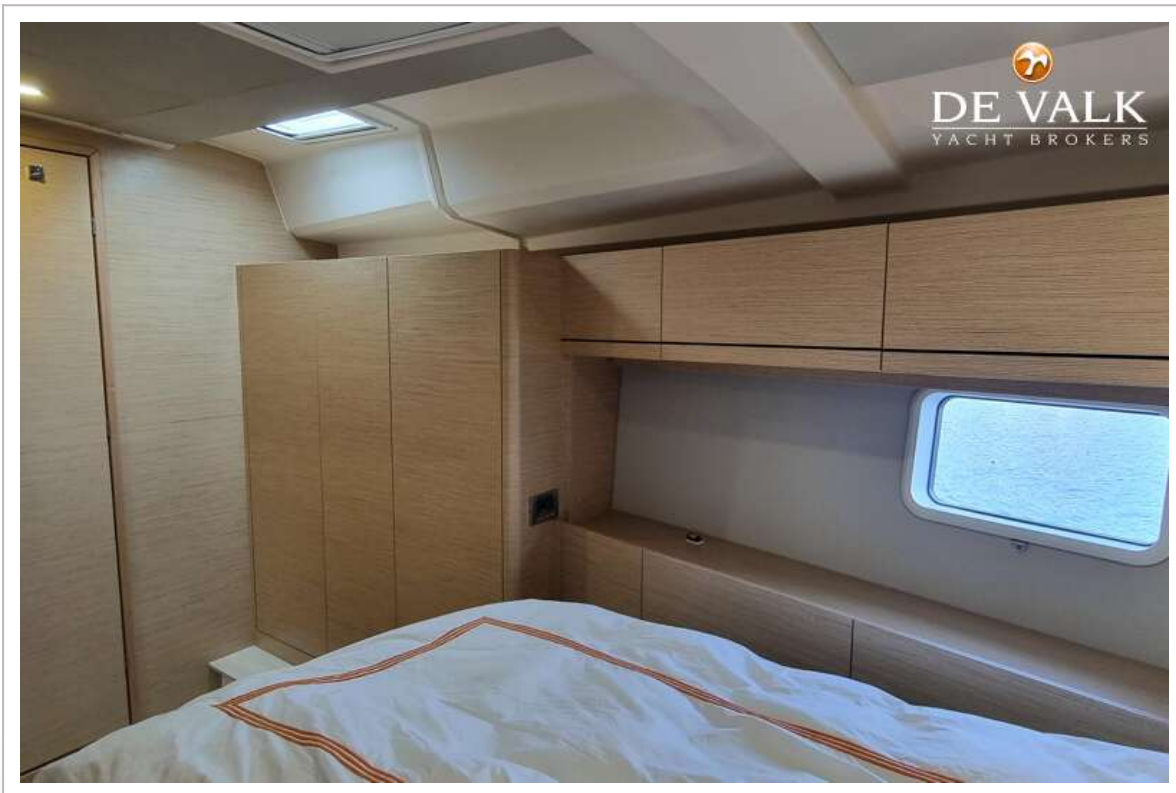
HANSE 508 EXCLUSIVE



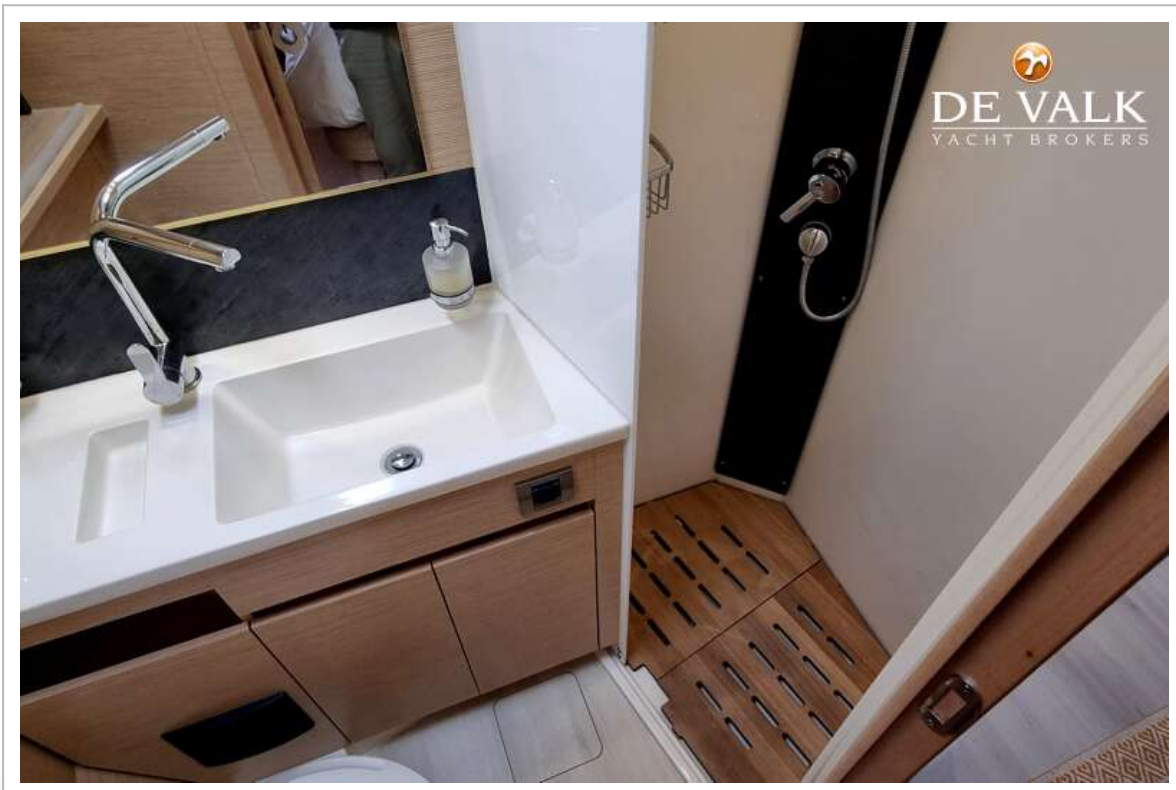
HANSE 508 EXCLUSIVE



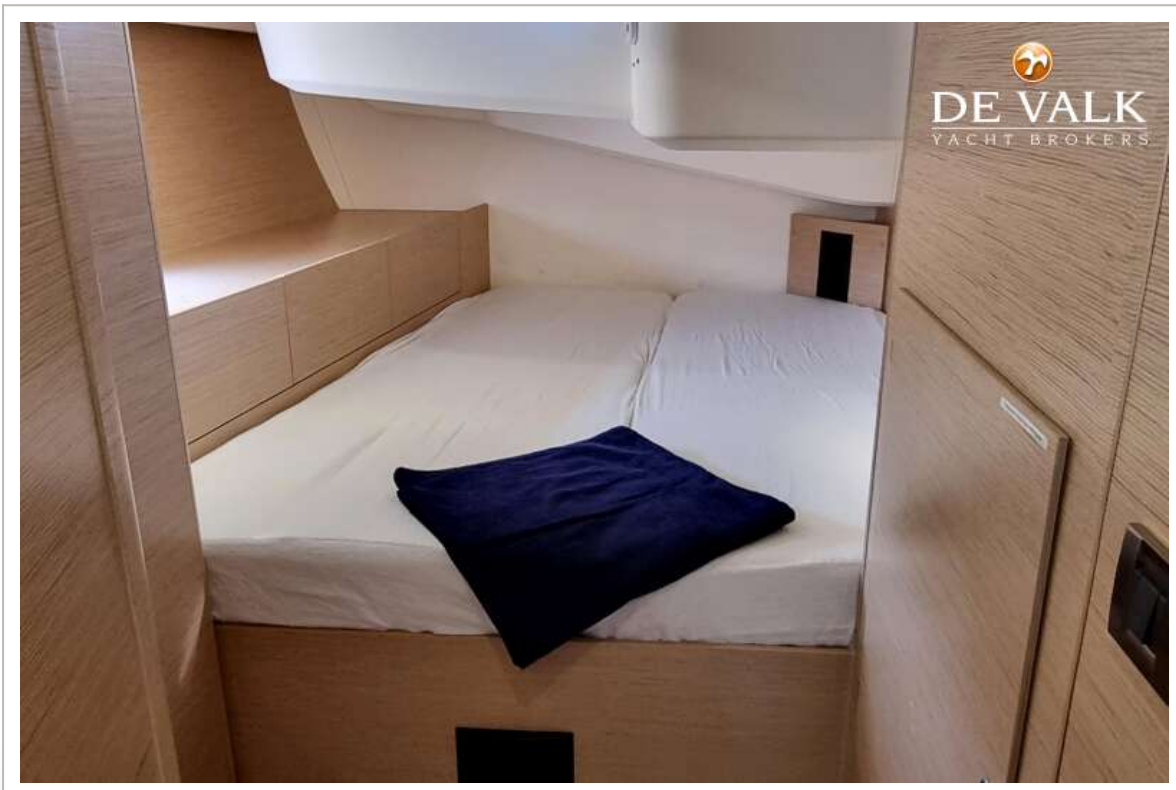
HANSE 508 EXCLUSIVE



HANSE 508 EXCLUSIVE



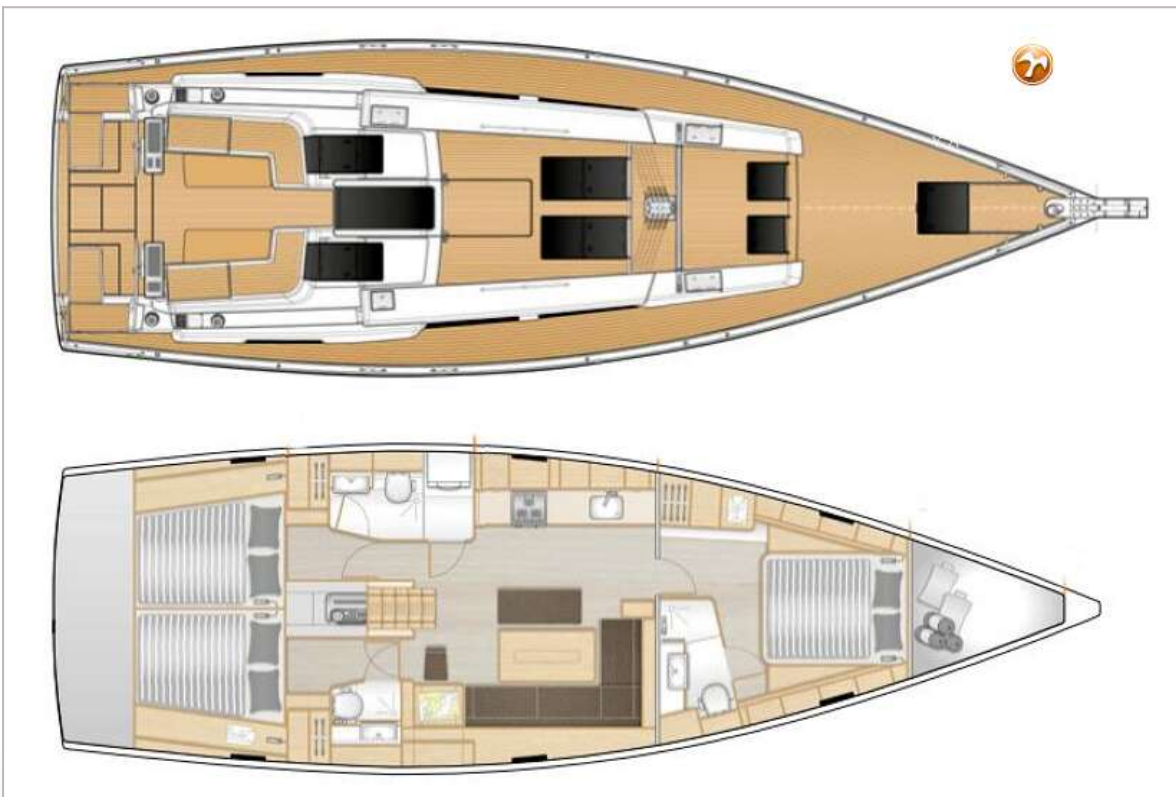
HANSE 508 EXCLUSIVE



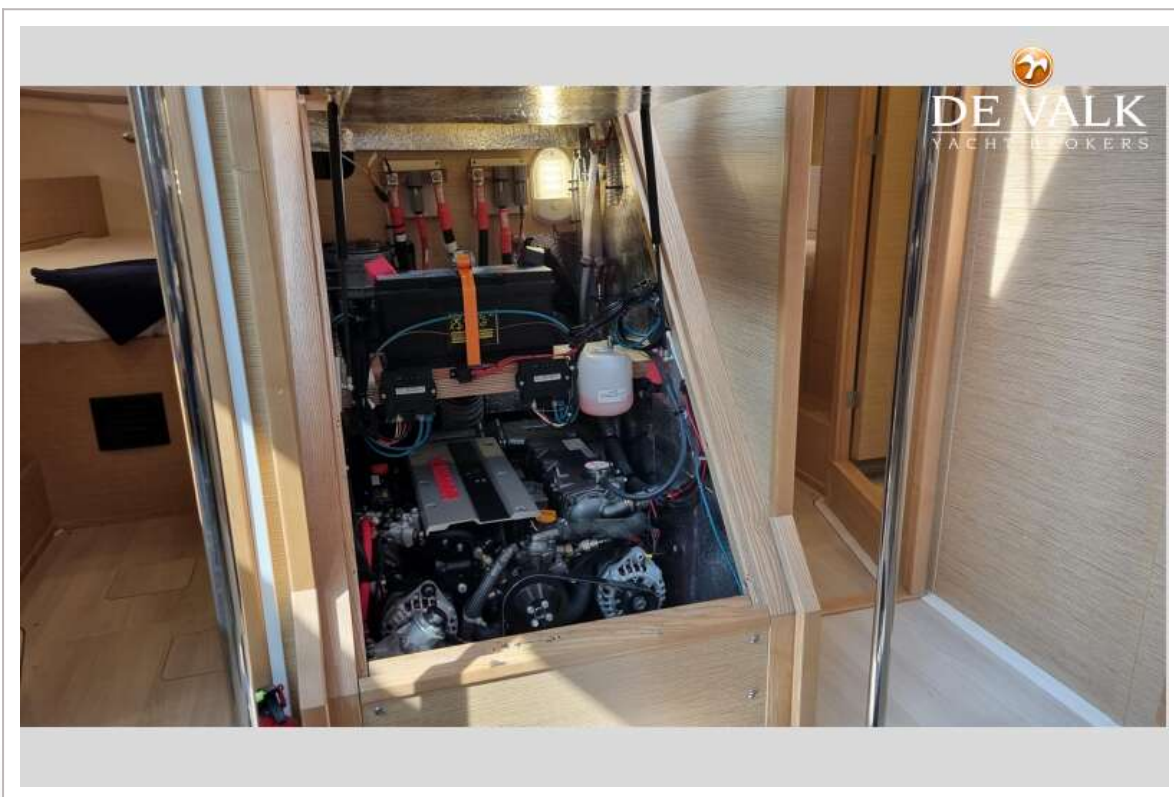
HANSE 508 EXCLUSIVE



HANSE 508 EXCLUSIVE



HANSE 508 EXCLUSIVE



HANSE 508 EXCLUSIVE

