



BAVARIA 36 HOLIDAY

# BAVARIA 36 HOLIDAY

## BROKER'S COMMENTS

This bavaria 36 Holiday is a very nice and well maintained family yacht worth your attention. The Bavaria 36 Holiday is more spacious than the Bavaria 36 2000 series. The Bavaria 36 Holiday has a higher quality of finish, and among other things has a German Lloyds specification. Her interior woodwork is very neat, has lots of storage space and the owners of the yacht have kept her in a very good condition. Lisa has 3 cabins, shallow draft, afurling mainsail and no teak deck. She is now available for a visit at our office in Hindeloopen.

*Hans Visser*

## SPECIFICATIONS

<b>Dimensions</b>	11.48 x 3.68 x 1.45 (m)	<b>Builder</b>	Bavaria Yachts GMBH
<b>Built</b>	1998	<b>Cabins</b>	3
<b>Material</b>	GRP	<b>Berths</b>	7
<b>Engine(s)</b>	1 x Volvo Penta MD2030 diesel	<b>Hp/Kw</b>	29 (hp), 21.34 (kw)
<b>Asking price</b>	€ 69.000 (VAT Paid)	<b>Lying</b>	at sales office

## CONTACT

<b>Sales office</b>	De Valk Hindeloopen	<b>Telephone</b>	+31 514 52 40 00
<b>Address</b>	Oosterstrand 1 8713 JS Hindeloopen The Netherlands	<b>E-mail</b>	hindeloopen@devalk.nl

## DISCLAIMER

These particulars are given in good faith as supplied but cannot be guaranteed.



# BAVARIA 36 HOLIDAY

## GENERAL

<b>Model</b>	BAVARIA 36 HOLIDAY
<b>Type</b>	sailing yacht
<b>LOA (m)</b>	11,48
<b>LWL (m)</b>	9,05
<b>Beam (m)</b>	3,68
<b>Draft (m)</b>	1,45
<b>Headroom (m)</b>	1,90
<b>Year built</b>	1998
<b>Launched</b>	March 1998
<b>Builder</b>	Bavaria Yachts GMBH
<b>Country</b>	Germany
<b>Designer</b>	J&J Design
<b>Displacement (t)</b>	5,5
<b>Ballast (tonnes)</b>	cast iron 1,780 kg
<b>CE norm</b>	A
<b>Hull material</b>	GRP
<b>Hull colour</b>	white
<b>Hull shape</b>	round-bilged
<b>Keel type</b>	fin keel with bulb
<b>Superstructure material</b>	GRP
<b>Rubbing strake</b>	aluminum
<b>Deck material</b>	GRP
<b>Deck finish</b>	non-skid moulded in
<b>Superstructure deck finish</b>	non-skid moulded in
<b>Cockpit deck finish</b>	non-skid moulded in Teak on seats
<b>Antifouling (year)</b>	Copper cruise 2024
<b>Window frame</b>	aluminium
<b>Window material</b>	perspex
<b>Deckhatch</b>	2 x
<b>Portholes</b>	yes



# BAVARIA 36 HOLIDAY

Fuel tank (litre)	stainless steel 150
Level indicator (fuel tank)	yes
Freshwater tank (litre)	180
Level indicator (freshwater)	yes
Blackwater tank (litre)	stainless steel 60
Blackwater tank extraction	pump
Wheel steering	cable steering With cover
Outside helm position	yes
Emergency tiller	yes
More info on paintwork	Striping 2024Cobalt blue epifanes
Extra info	Keel sanded down and rebuilt 5 layers of primer 2024

## ACCOMMODATION

Cabins	3
Berths	7
Interior	mahogany
Layout	Standard
Floor	parquet
Open cockpit	yes
Saloon	yes
Headroom saloon (m)	1,95
Heating	diesel ducted hot air Webasto
Navigation center	yes
Chart table	yes
Aft Cabin	2 x
Sliding door to cockpit	yes
Galley	Alongside
Countertop	plastic
Sink	stainless steel
Cooker	calor gas 2 burner
Oven	yes



<b>Fridge</b>	yes
<b>Water pressure system</b>	electrical
<b>Owners cabin</b>	v-bed Front
<b>Bed length (m)</b>	2,00
<b>Wardrobe</b>	hanging and shelves
<b>Bathroom</b>	shared
<b>Toilet</b>	New pump 2024
<b>Toilet system</b>	manual
<b>Wash basin</b>	yes
<b>Extra info</b>	All toilet piping replaced 2024
<b>Guest cabin 1</b>	double bed Rear
<b>Bed length (m)</b>	2,00
<b>Wardrobe</b>	hanging and shelves
<b>Guest cabin 2</b>	double bed Rear
<b>Bed length (m)</b>	2,00
<b>Wardrobe</b>	hanging and shelves

## MACHINERY

<b>No of engines</b>	1
<b>Make</b>	Volvo Penta
<b>Type</b>	MD2030
<b>HP</b>	29
<b>kW</b>	21.34
<b>Fuel</b>	diesel
<b>Year installed</b>	1996
<b>Maximum speed (kn)</b>	7
<b>Cruising speed (kn)</b>	6
<b>Consumption (l/hr)</b>	2,5
<b>Engine cooling system</b>	freshwater heat exchanger
<b>Drive</b>	sail-drive
<b>Saildrive seal</b>	2008



Engine controls	manual
Propeller type	fixed
Propeller blades	2
Propeller shaft material	stainless steel
Manual bilge pump	yes
Electric bilge pump	yes
Batteries	yes
Start battery	12 V 55 AH 2024
Service battery	12 V 110 AH
Battery charger	yes
Shorepower	with cable

## NAVIGATION

Compass	yes
Depth sounder	Autohelm/Raymarine
Log	Autohelm/Raymarine
Windset	Autohelm/Raymarine
VHF	Garmin dual station
Autopilot	Autohelm/Raymarine needs new bearings
GPS	yes
Plotter	yes
Plotter/GPS	Raymarine new 2024
Electronic chart(s)	yes
Navigation lights	yes

## EQUIPMENT

Sprayhood with grab rail	yes
Winter cover	New never used
Boarding ladder	yes
Deck shower	yes
Anchor	CQR Plough



Anchor chain	50 M stainless steel 8 mm
Windlass	electrical
Deck wash	yes
Sea railing	yes
Grab rail (superstructure)	stainless steel
Lifebuoy	2024
Radar reflector	yes
Fenders	yes
Mooring lines	yes
TV	yes
Radio	yes
Speakers in salon	yes
Clock - barometer	yes
Fire extinguisher	2024
Extra info	yes

## RIGGING

Rigging	sloop
Standing rigging	wire Replaced by first owner
Brand mast	Seldén
Material mast	aluminium
Spreaders	2 sets
Mainsail	Approx 26 M2, original, UV needs replacing good quality
Stoway mast	yes
Genoa	Elvstrom with new UV 2024, year unknown 32 M2, good condition
Genoa furler	Manual Selden S 200
Reefing System	slabreefing
Backstay adjuster	tackle With stopper
Boomvang	gasspring Selden
Genoa sheetwinches	yes



<b>Halyard winches</b>	yes
<b>Spinnaker winch</b>	yes
<b>Spi-pole</b>	aluminium On the mast
<b>Extra info</b>	Lightning deflector in backstay





# BAVARIA 36 HOLIDAY





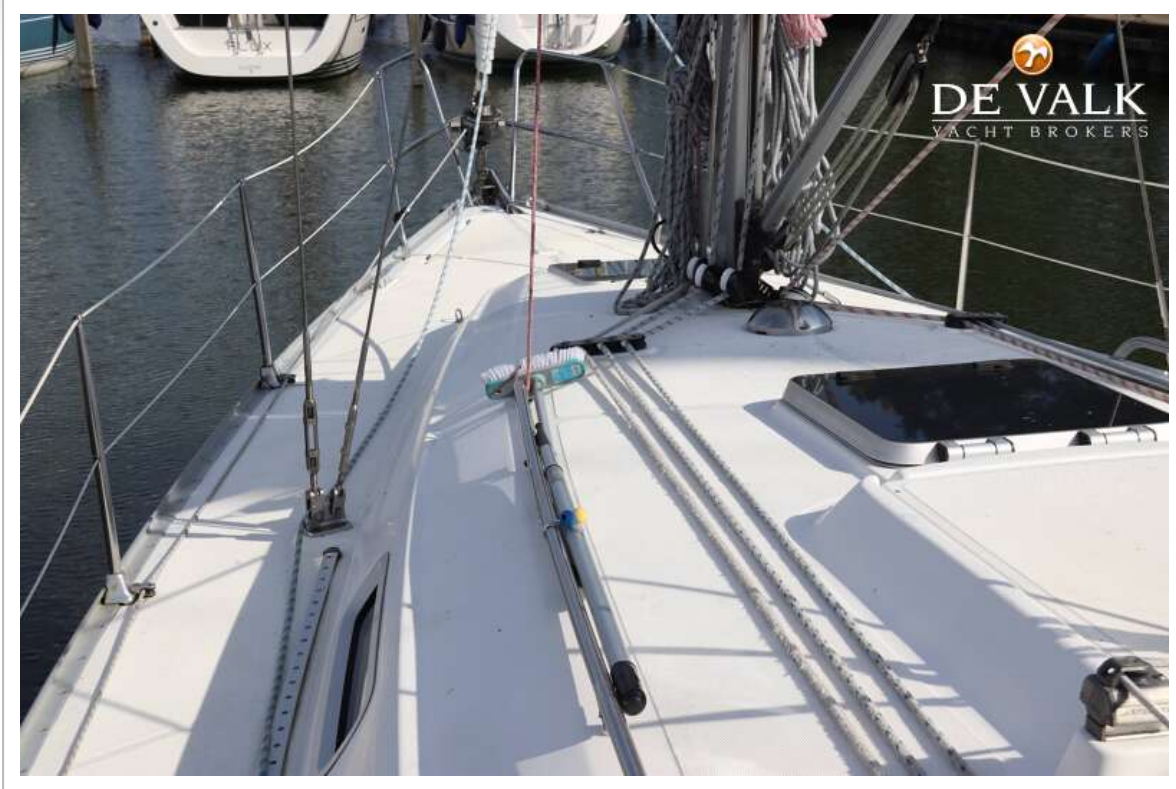




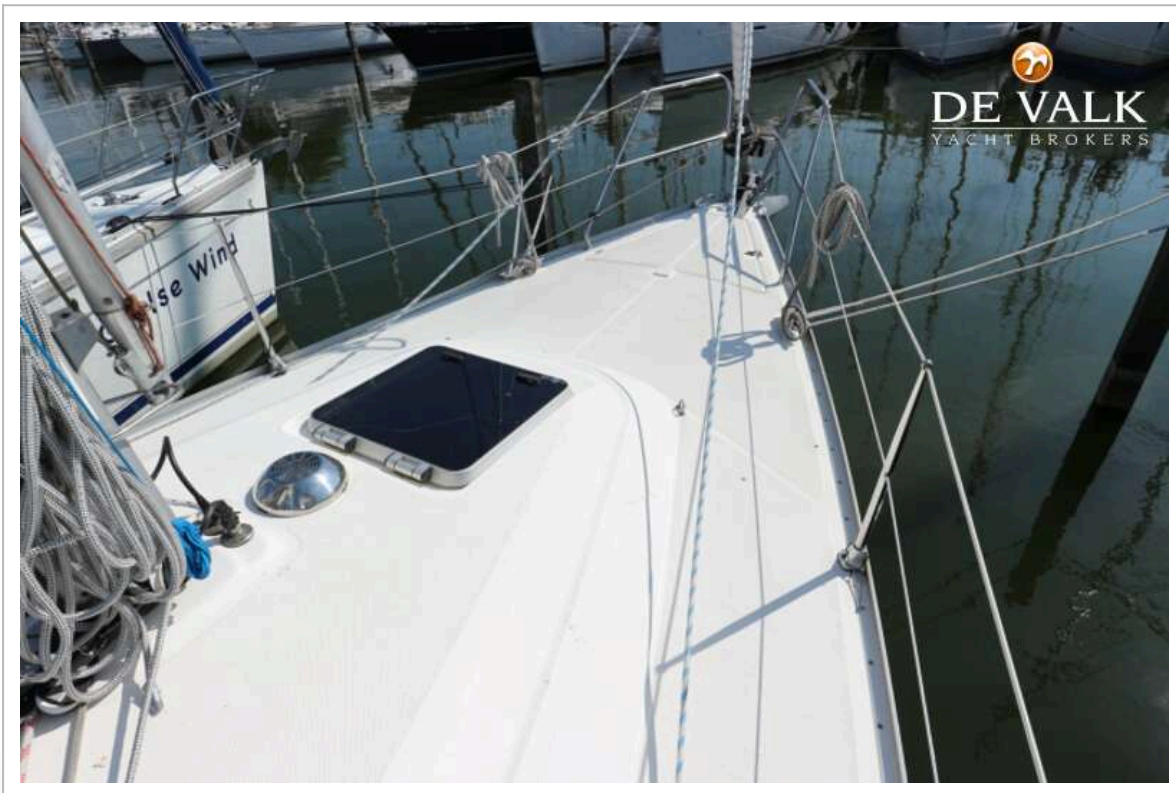
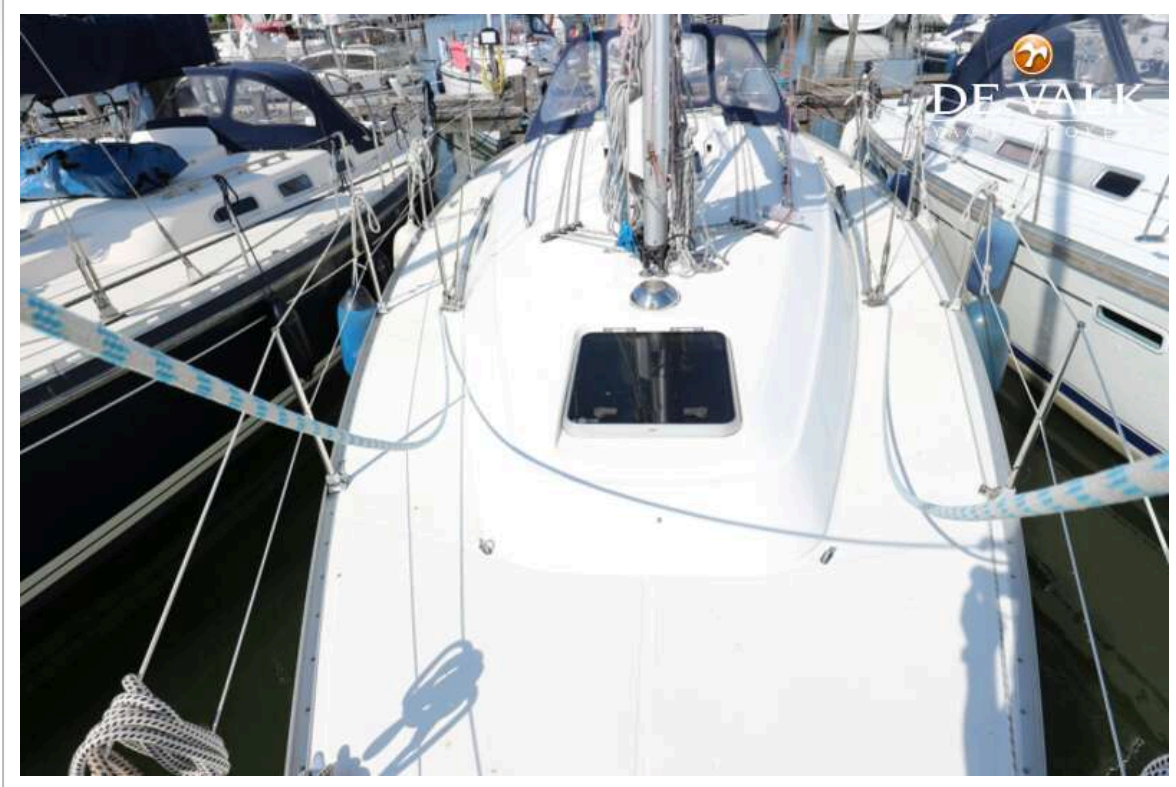
# BAVARIA 36 HOLIDAY



# BAVARIA 36 HOLIDAY











# BAVARIA 36 HOLIDAY



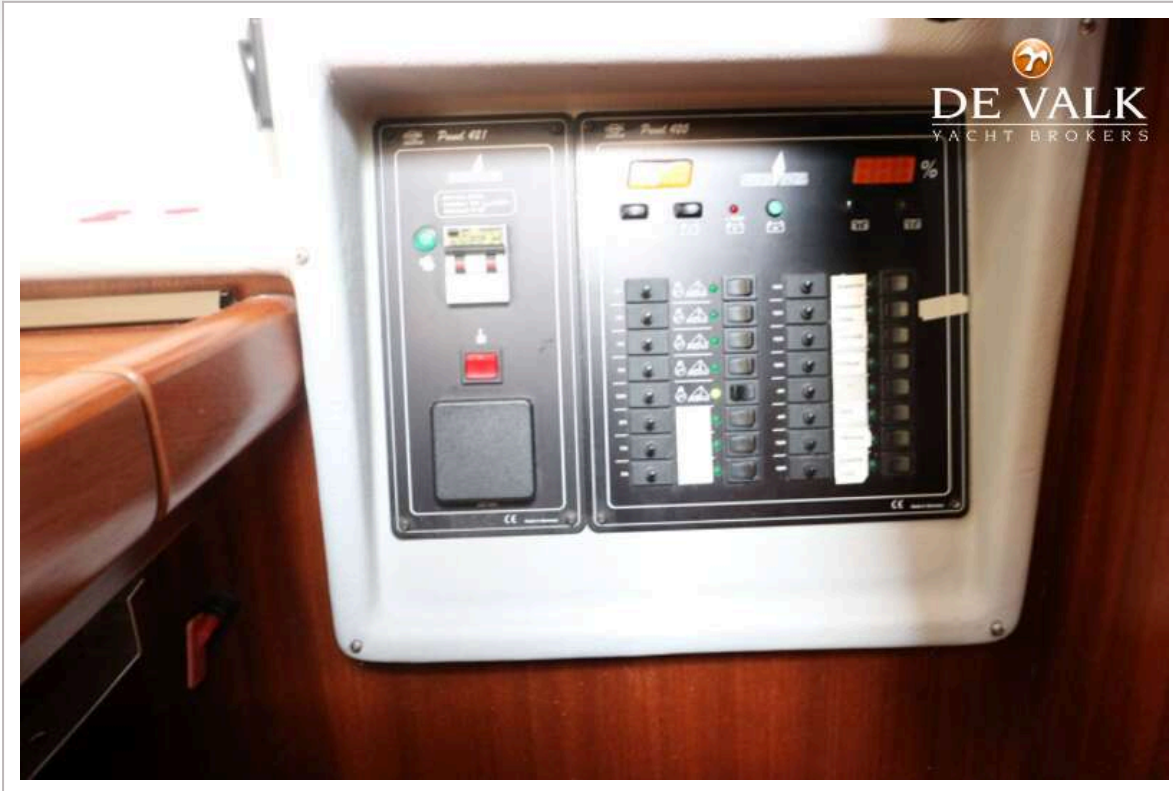
# BAVARIA 36 HOLIDAY



# BAVARIA 36 HOLIDAY

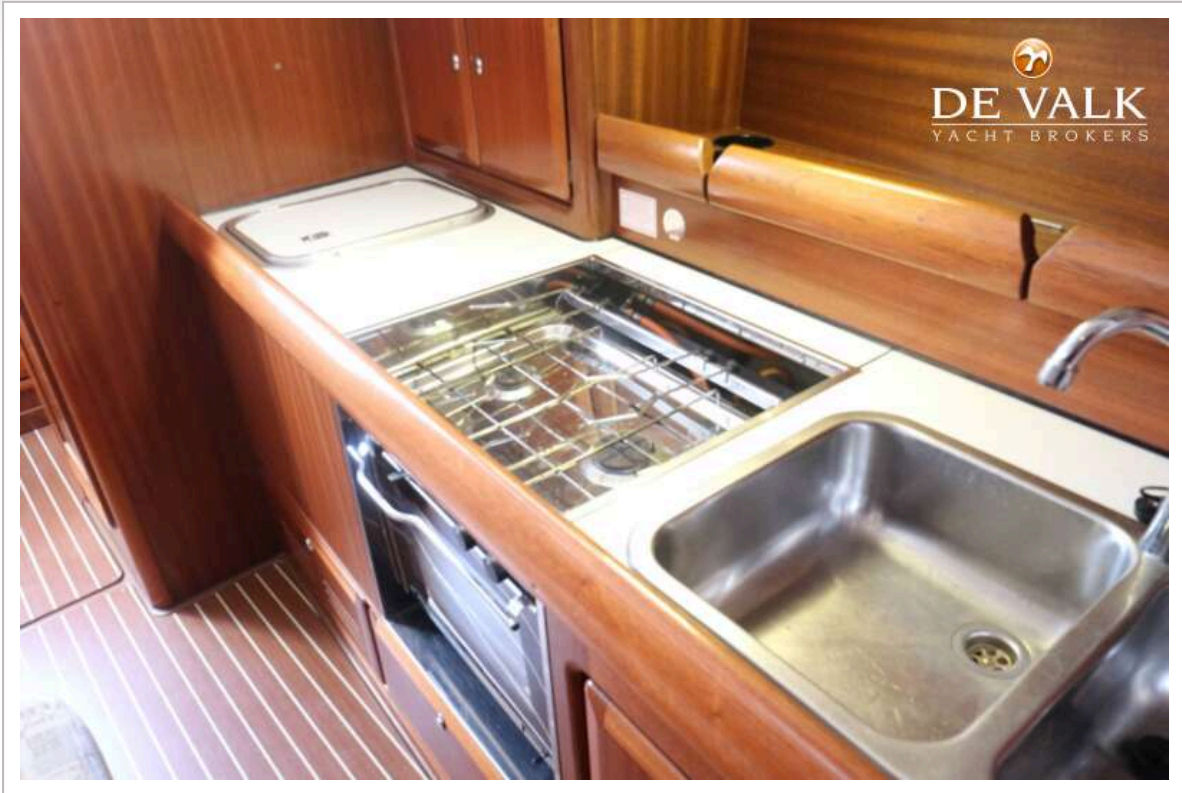


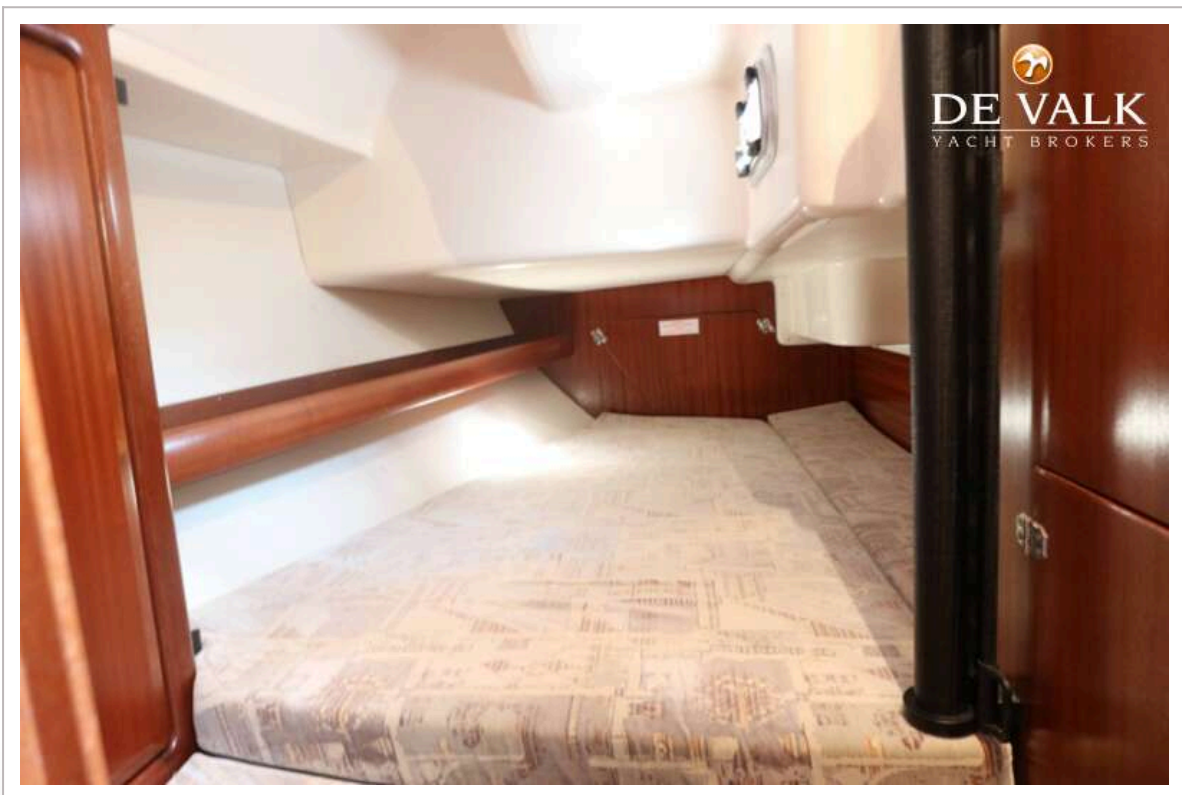
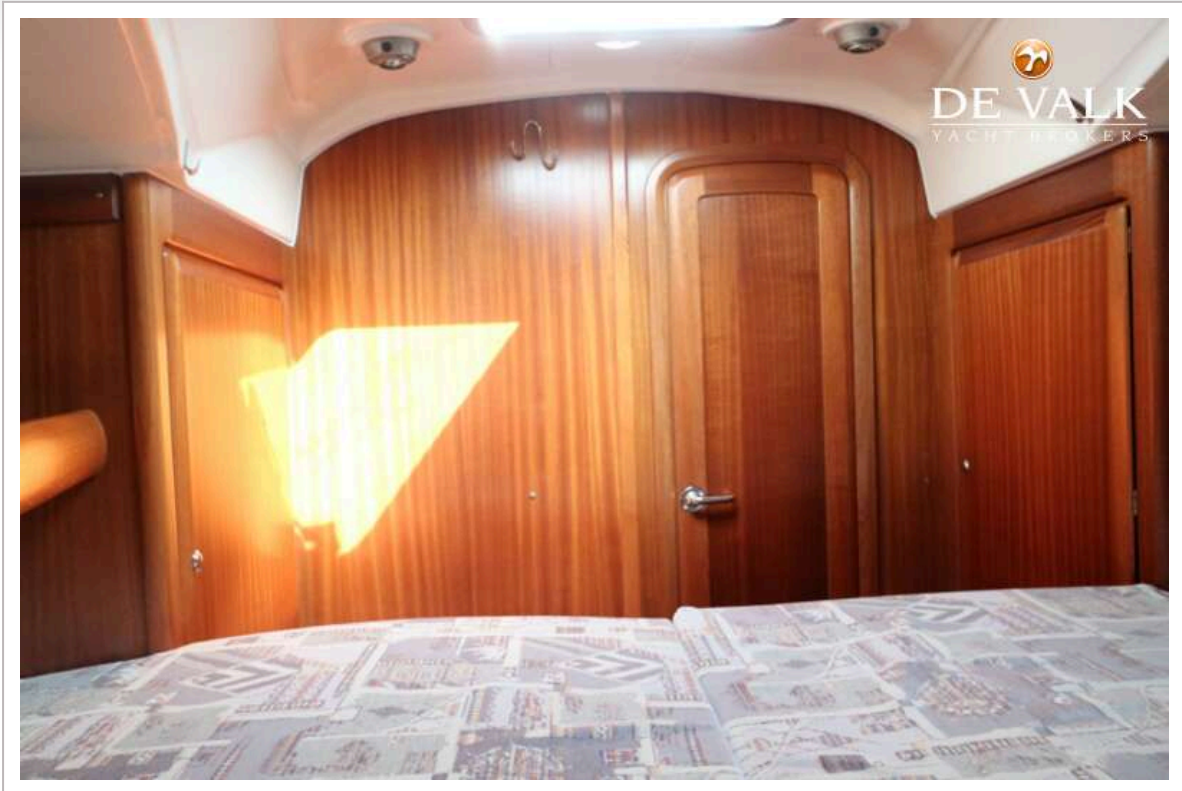
# BAVARIA 36 HOLIDAY



# BAVARIA 36 HOLIDAY



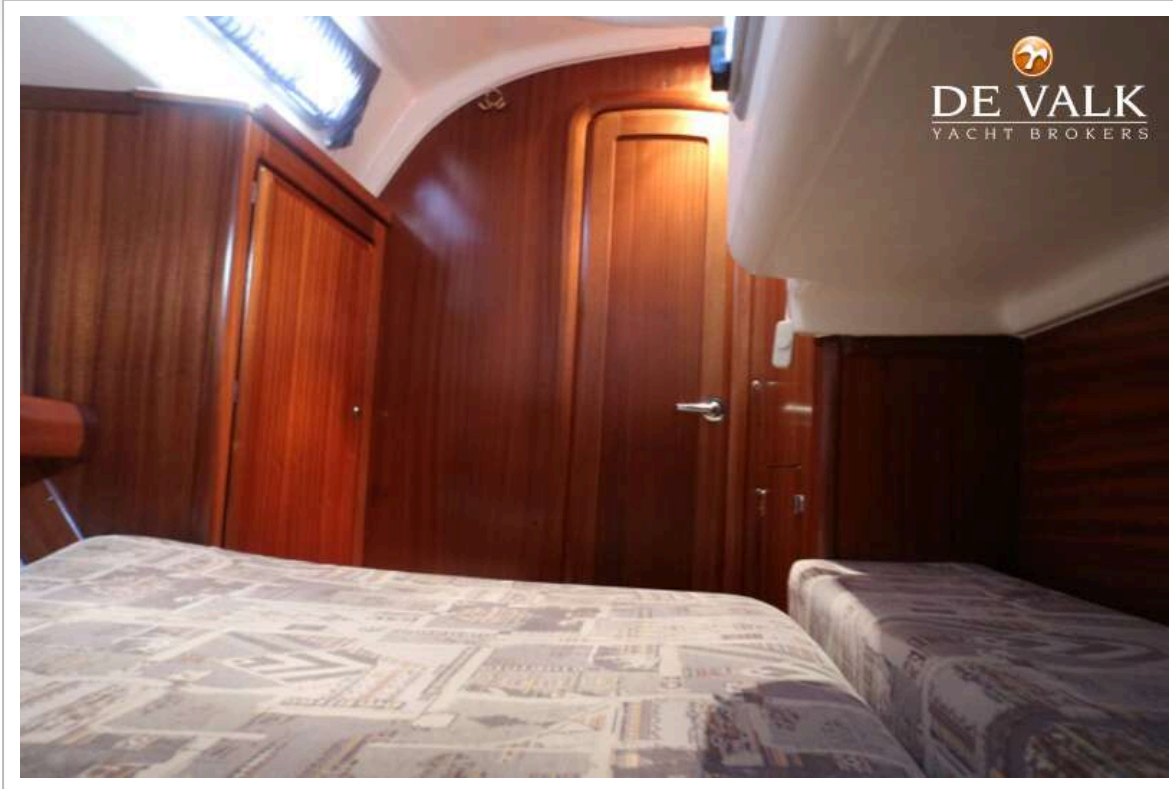






# BAVARIA 36 HOLIDAY





# BAVARIA 36 HOLIDAY

