



DE VALK  
YACHT BROKERS



RO/PAX DOUBLE ENDED FERRY 78 M



DE VALK  
YACHT BROKERS

# RO/PAX DOUBLE ENDED FERRY 78 M

## BROKER'S COMMENTS

Open type Double ended RO/PAX FERRY INSB CLASS that was built in a Perama Shipyard in Greece in 2018. Ferry equipped with a VETH X 4 rudder prop system VZ-400.

*Sofia Iliia-Salvanou*

## SPECIFICATIONS

<b>Dimensions</b>	78.60 x 16.50 x 0.00 (m)	<b>Builder</b>	
<b>Built</b>	2018	<b>Cabins</b>	2
<b>Material</b>	Steel	<b>Berths</b>	
<b>Engine(s)</b>	4 x CATERPILLAR C18 diesel	<b>Hp/Kw</b>	4 x 600.00 (hp), 441.60 (kw)
<b>Asking price</b>	€ 5.500.000 (VAT Not paid)	<b>Lying</b>	elsewhere / Not at sales office

## CONTACT

<b>Sales office</b>	De Valk Corfu	<b>Telephone</b>	(+30) 266 111 8095
<b>Address</b>	New Port of Corfu, near Gouvia Marina 490 83 Corfu Greece	<b>E-mail</b>	corfu@devalk.nl

## DISCLAIMER

These particulars are given in good faith as supplied but cannot be guaranteed.



# RO/PAX DOUBLE ENDED FERRY 78 M

## GENERAL

<b>Model</b>	RO/PAX DOUBLE ENDED FERRY 78 M
<b>Type</b>	motor yacht
<b>LOA (m)</b>	78,60
<b>Beam (m)</b>	16,50
<b>Year built</b>	2018
<b>Country</b>	Greece
<b>Gross tonnage</b>	1.500
<b>Hull material</b>	steel
<b>Hull colour</b>	yellow
<b>Superstructure material</b>	steel
<b>Deck material</b>	steel
<b>Deck finish</b>	non-skid paint
<b>Superstructure deck finish</b>	non-skid paint
<b>Window material</b>	glass
<b>Fuel tank (litre)</b>	yes
<b>Freshwater tank (litre)</b>	yes
<b>Blackwater tank (litre)</b>	yes
<b>Greywater tank (litre)</b>	yes
<b>Wheel steering</b>	yes
<b>Extra info</b>	INSB CLASS
<b>Extra info</b>	308 passengers and 90 cars or 16 Trucks of 12m
<b>Extra info</b>	GARAGE HEADROOM 5,18m

## ACCOMMODATION

<b>Cabins</b>	2
<b>Air-conditioning</b>	yes
<b>Extra info</b>	ELEVATOR FOR PASSENGERS

## MACHINERY



# RO/PAX DOUBLE ENDED FERRY 78 M

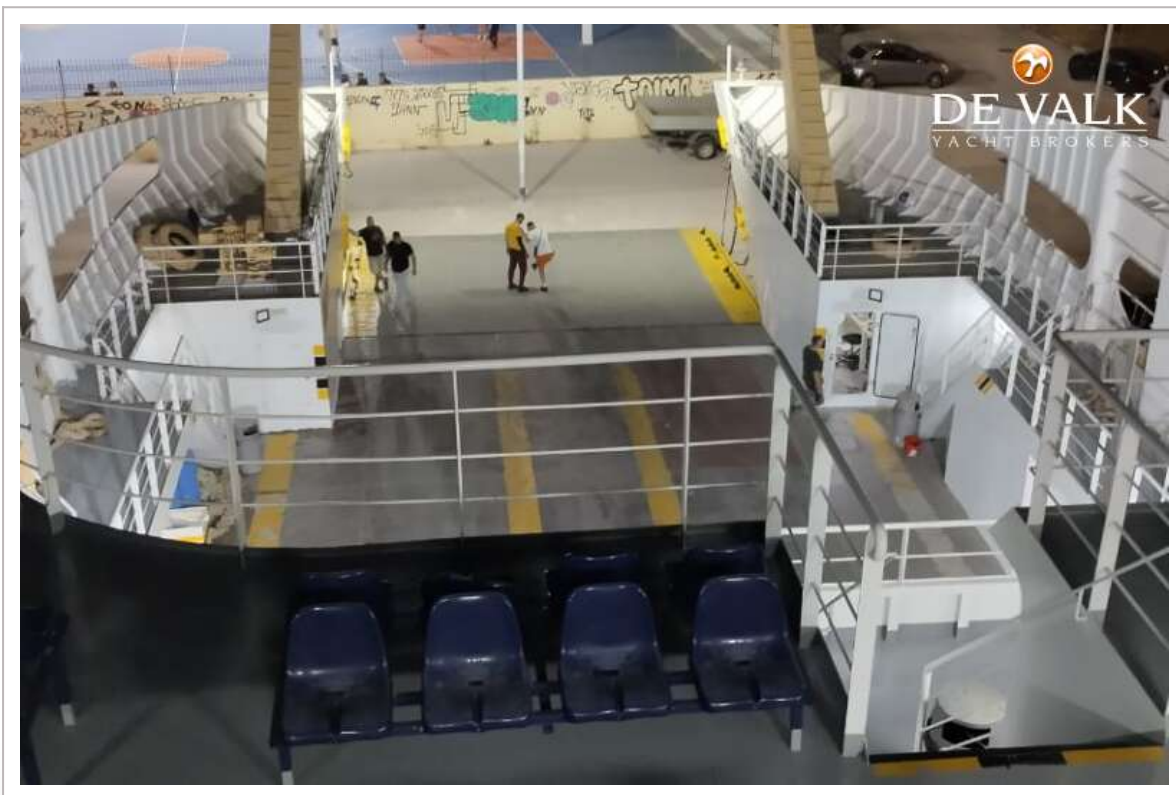
No of engines	4
Make	CATERPILLAR
Type	C18
HP	600
kW	441.60
Fuel	diesel
Year installed	2018
Maximum speed (kn)	13,5
Cruising speed (kn)	12
Propeller type	fixed X4 VETH RUDDER PROP SYSTEM VZ-400
Generator	X 3 CATERPILLAR 110 KVA EACH
Generator 2	X 1 EMERGENCY GENERATOR 80 KVA
Batteries	yes

## NAVIGATION

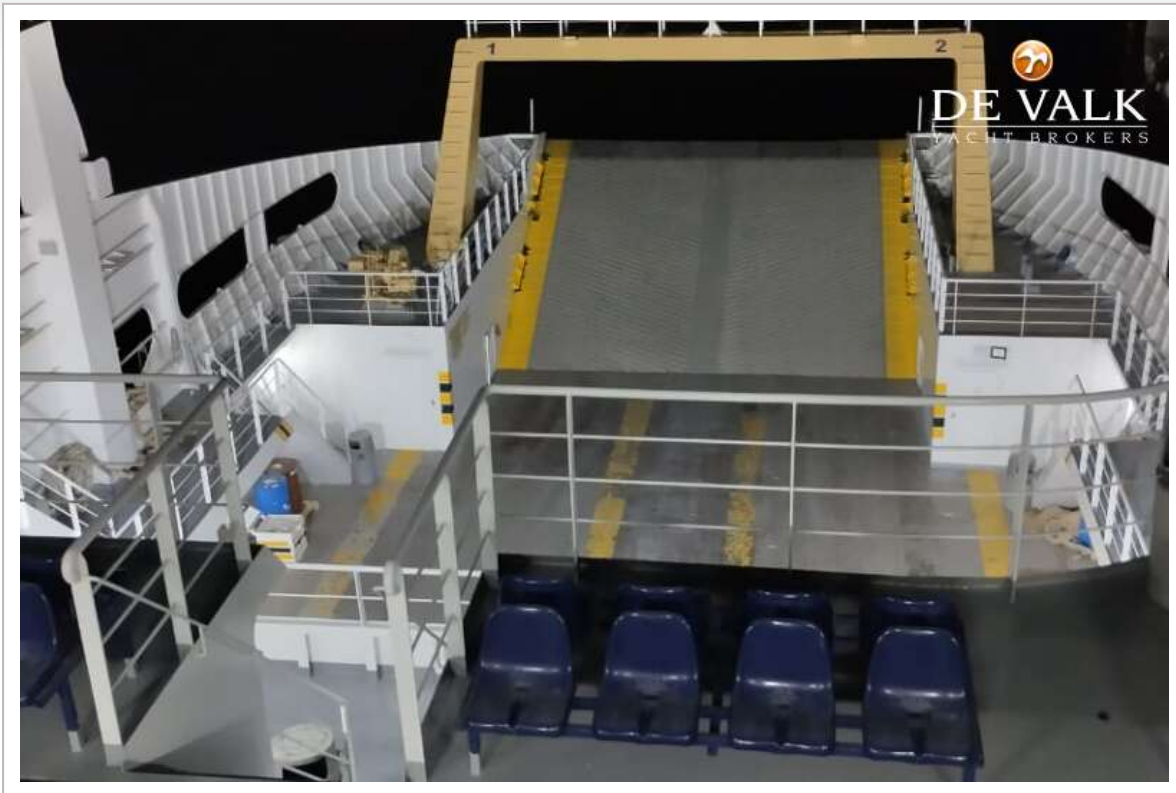
Compass	yes
Depth sounder	yes
VHF	yes
Autopilot	yes
Radar	X 2 ARPA
AIS receiver	yes
AIS transponder	yes
Navigation lights	yes
Extra info	GYRO



# RO/PAX DOUBLE ENDED FERRY 78 M



# RO/PAX DOUBLE ENDED FERRY 78 M

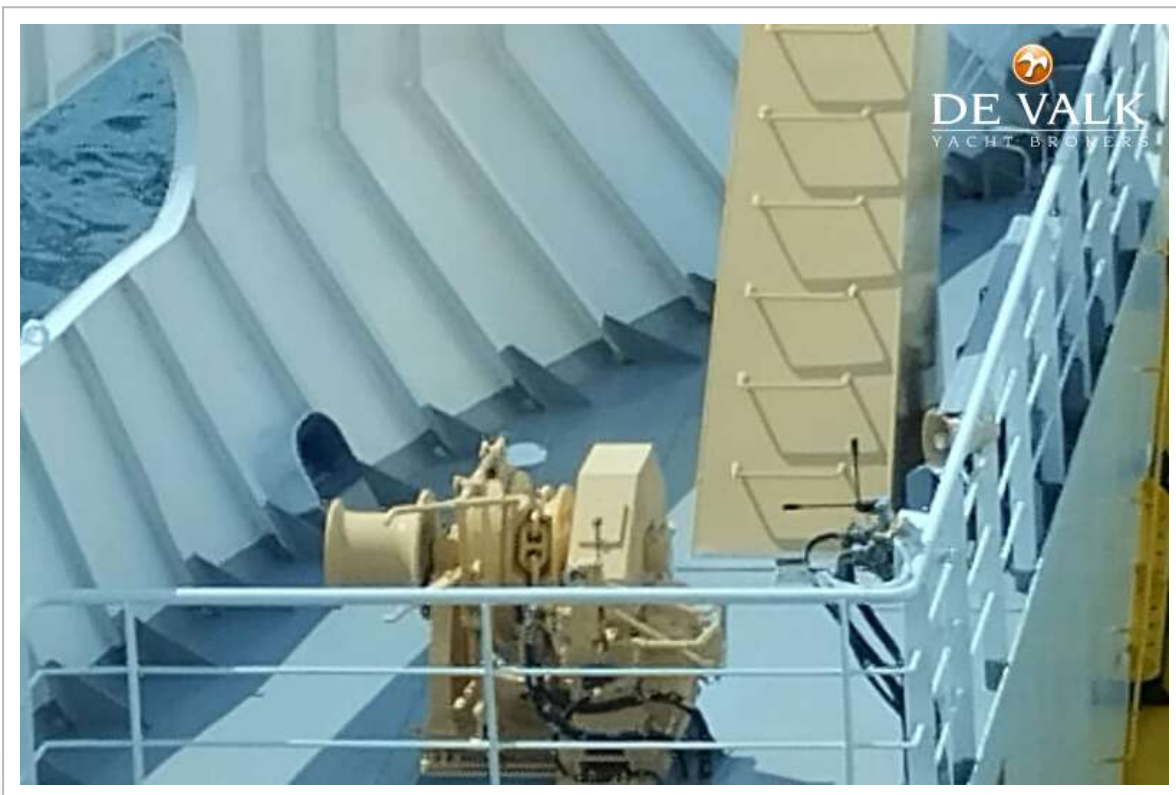
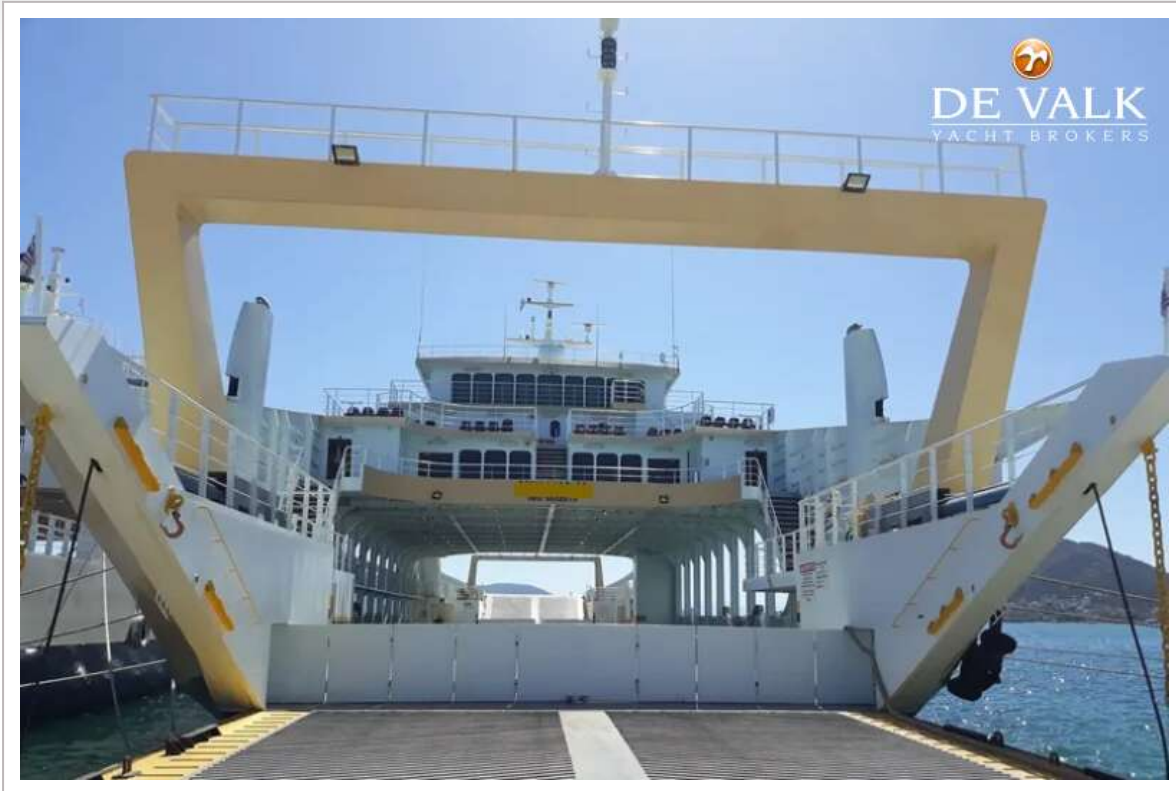




# RO/PAX DOUBLE ENDED FERRY 78 M



# RO/PAX DOUBLE ENDED FERRY 78 M

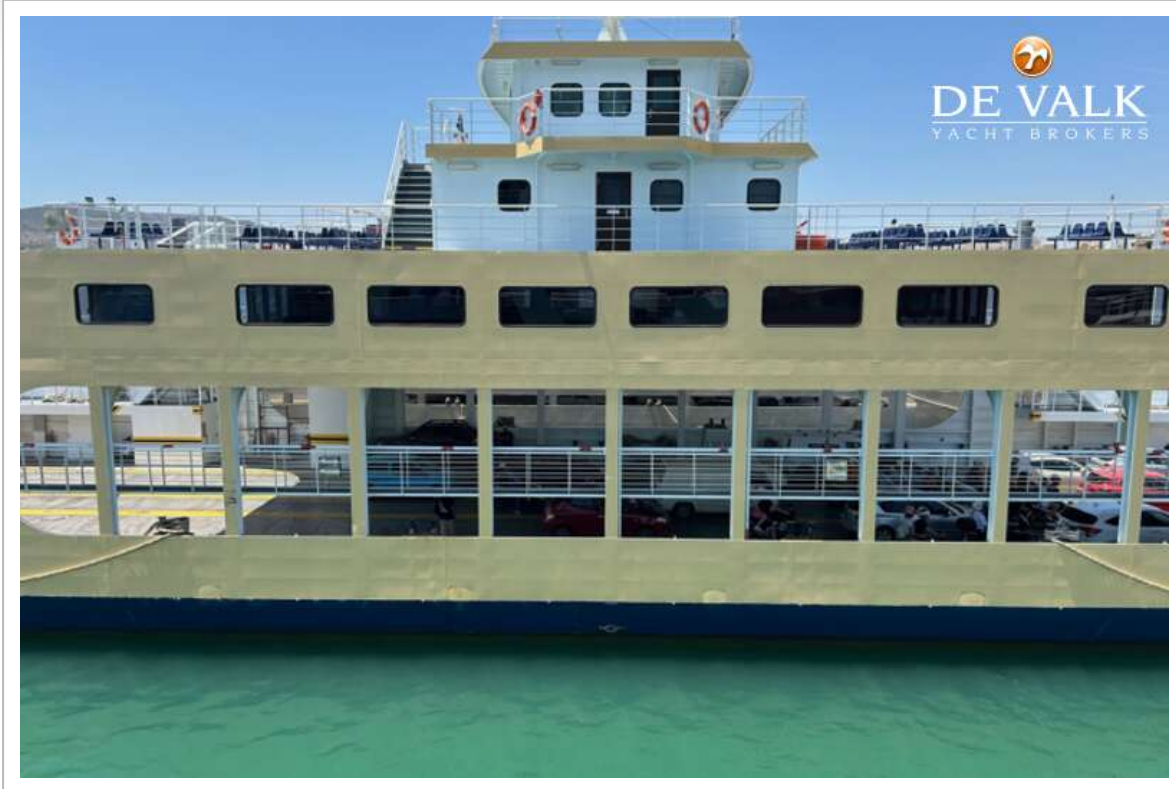




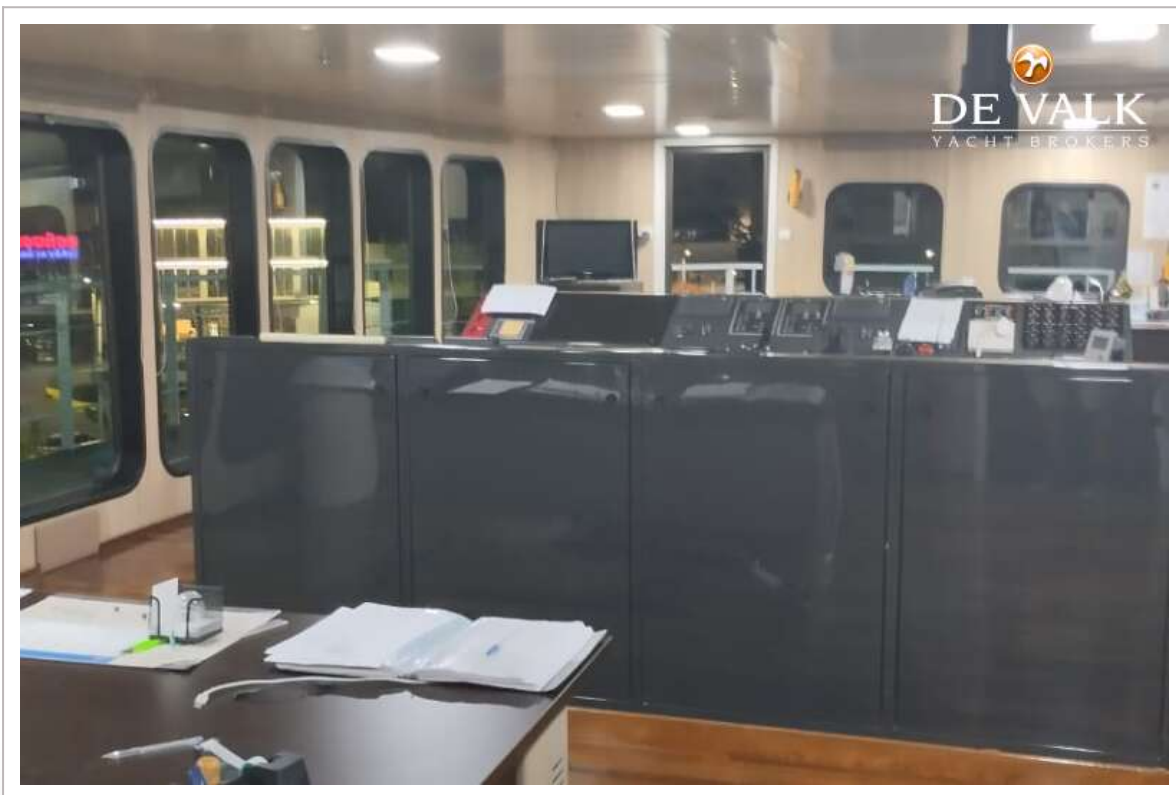
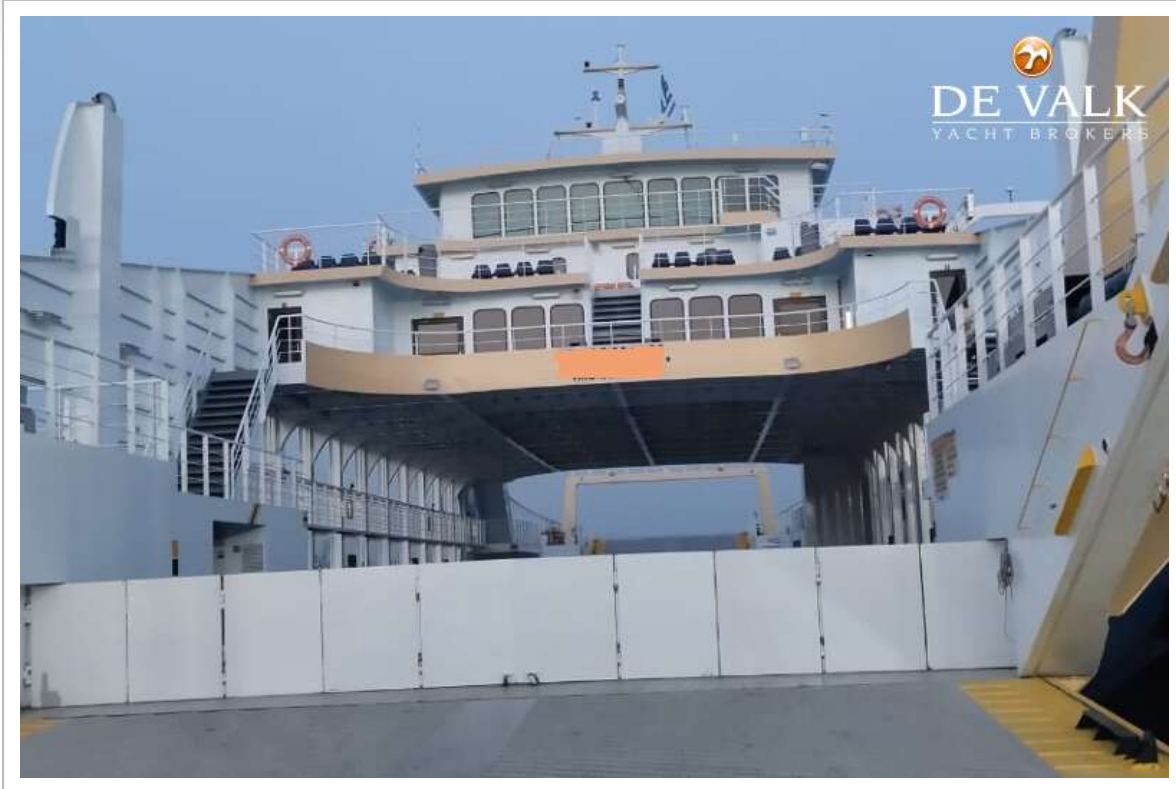
# RO/PAX DOUBLE ENDED FERRY 78 M



# RO/PAX DOUBLE ENDED FERRY 78 M

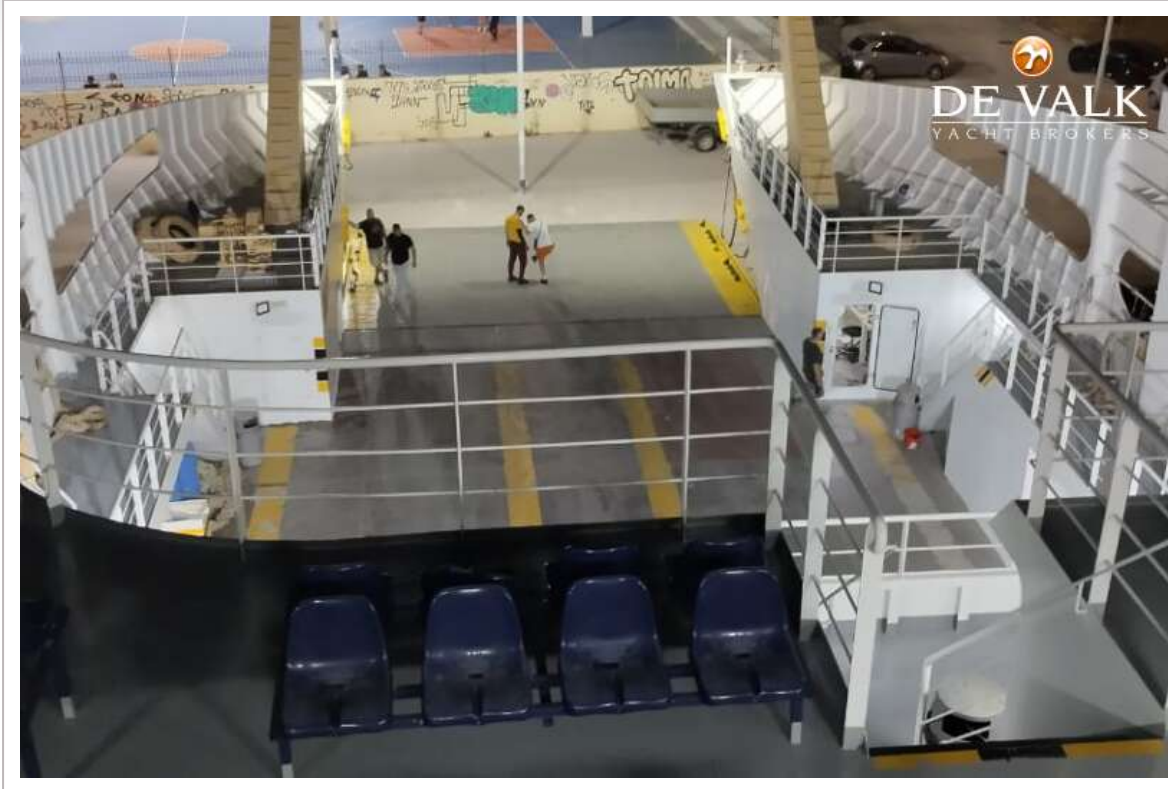


# RO/PAX DOUBLE ENDED FERRY 78 M



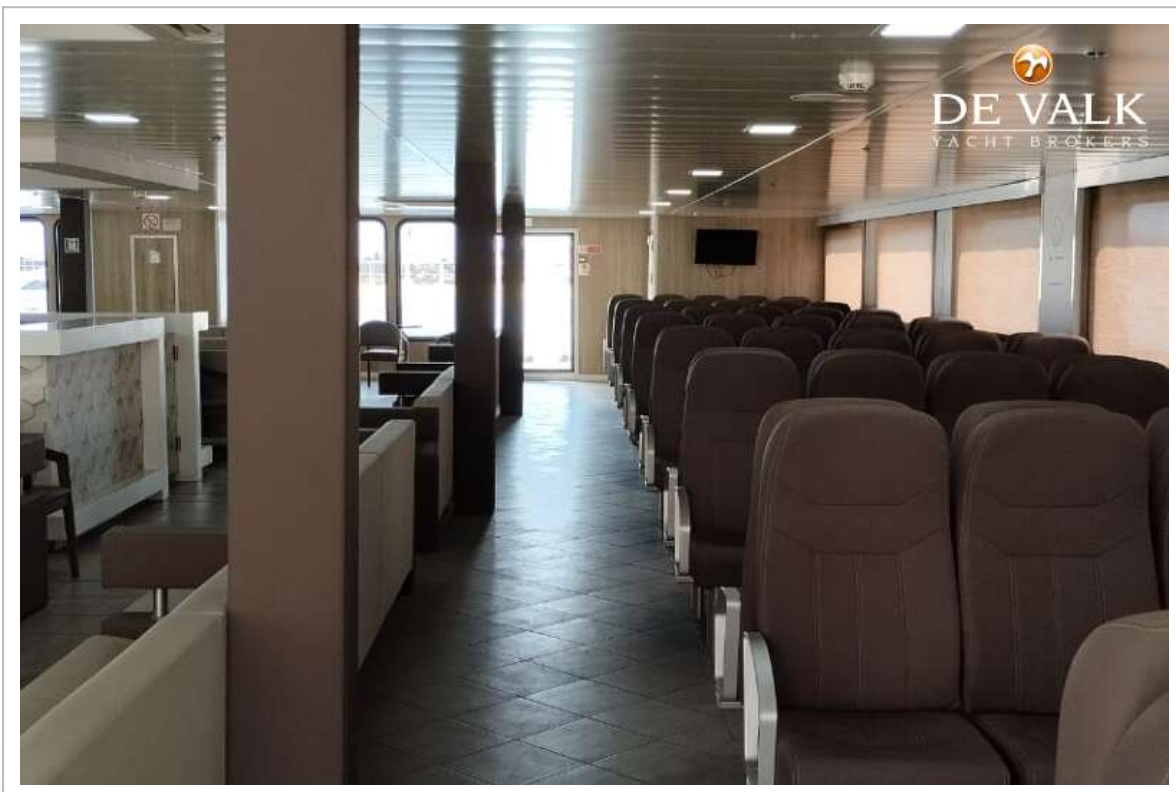
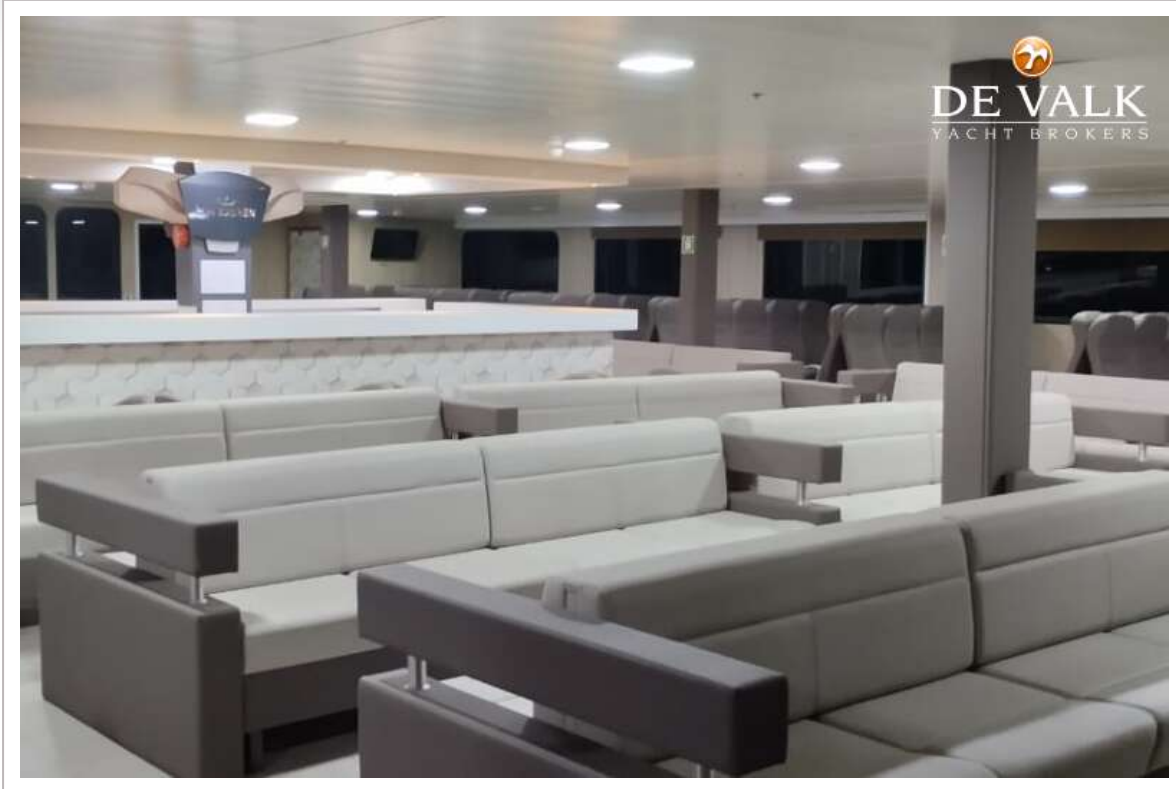


# RO/PAX DOUBLE ENDED FERRY 78 M

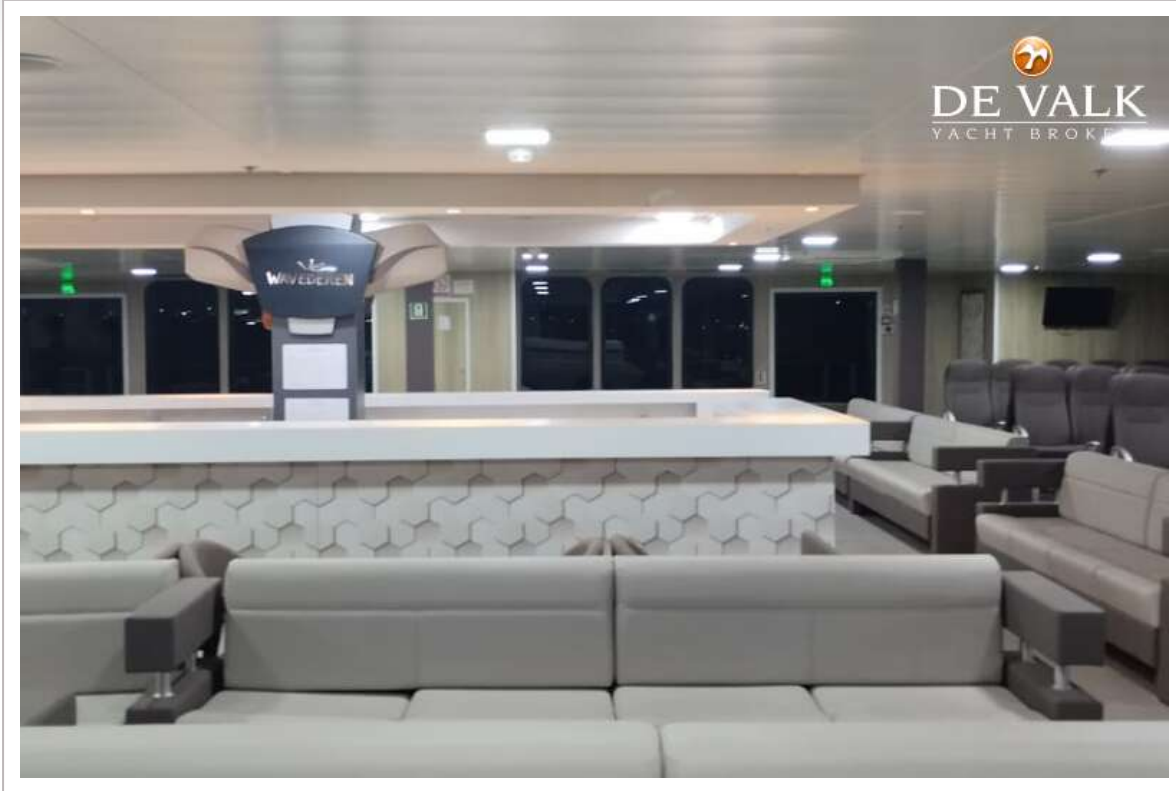




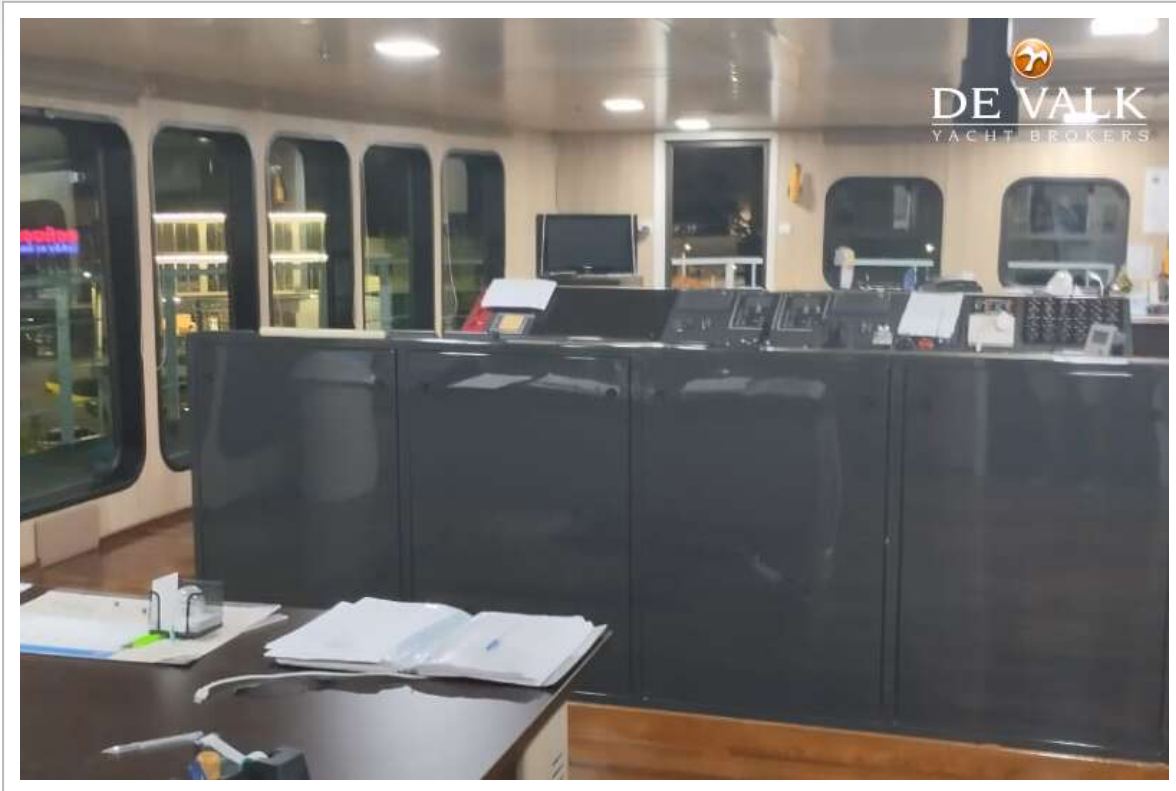
# RO/PAX DOUBLE ENDED FERRY 78 M



# RO/PAX DOUBLE ENDED FERRY 78 M

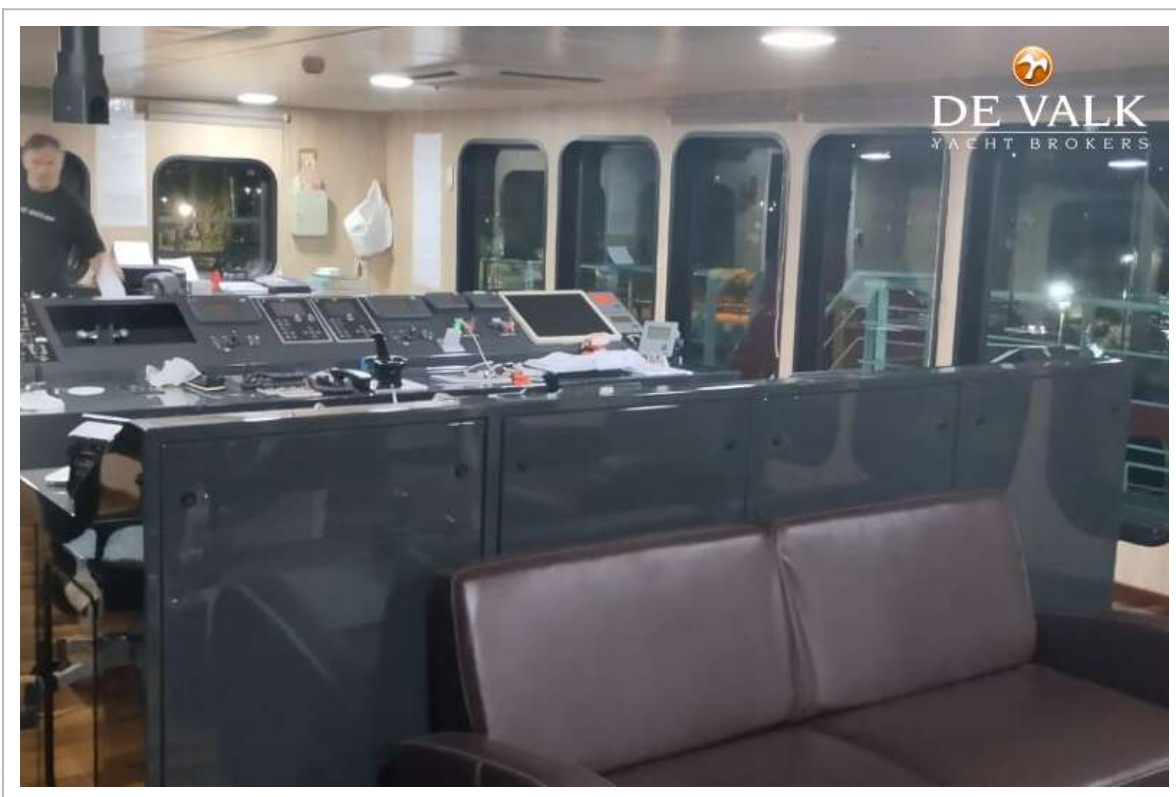


# RO/PAX DOUBLE ENDED FERRY 78 M



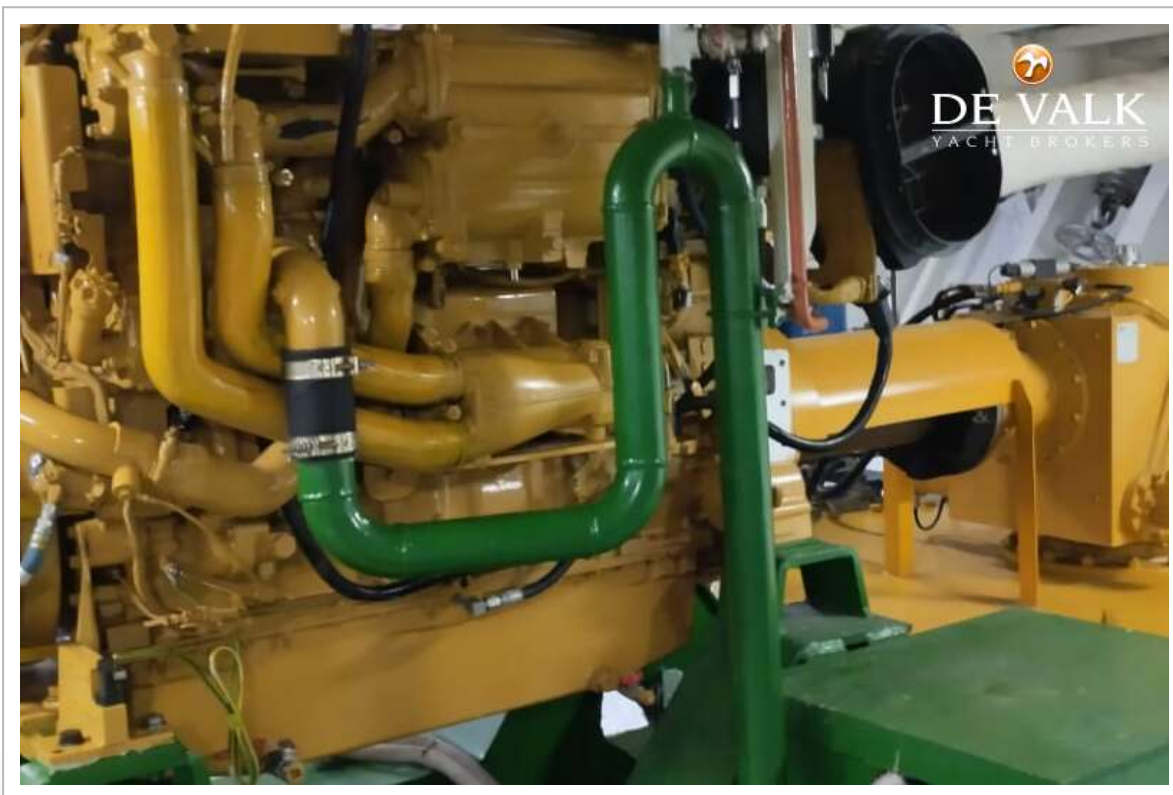
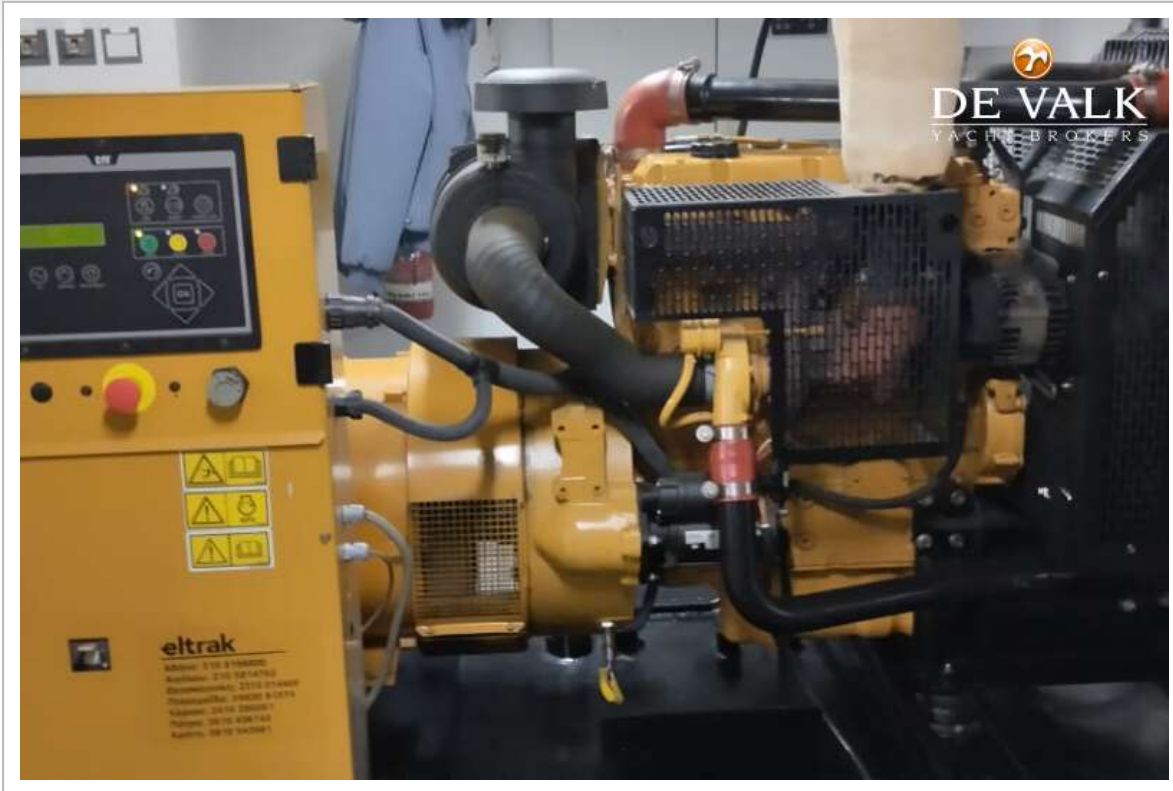


# RO/PAX DOUBLE ENDED FERRY 78 M

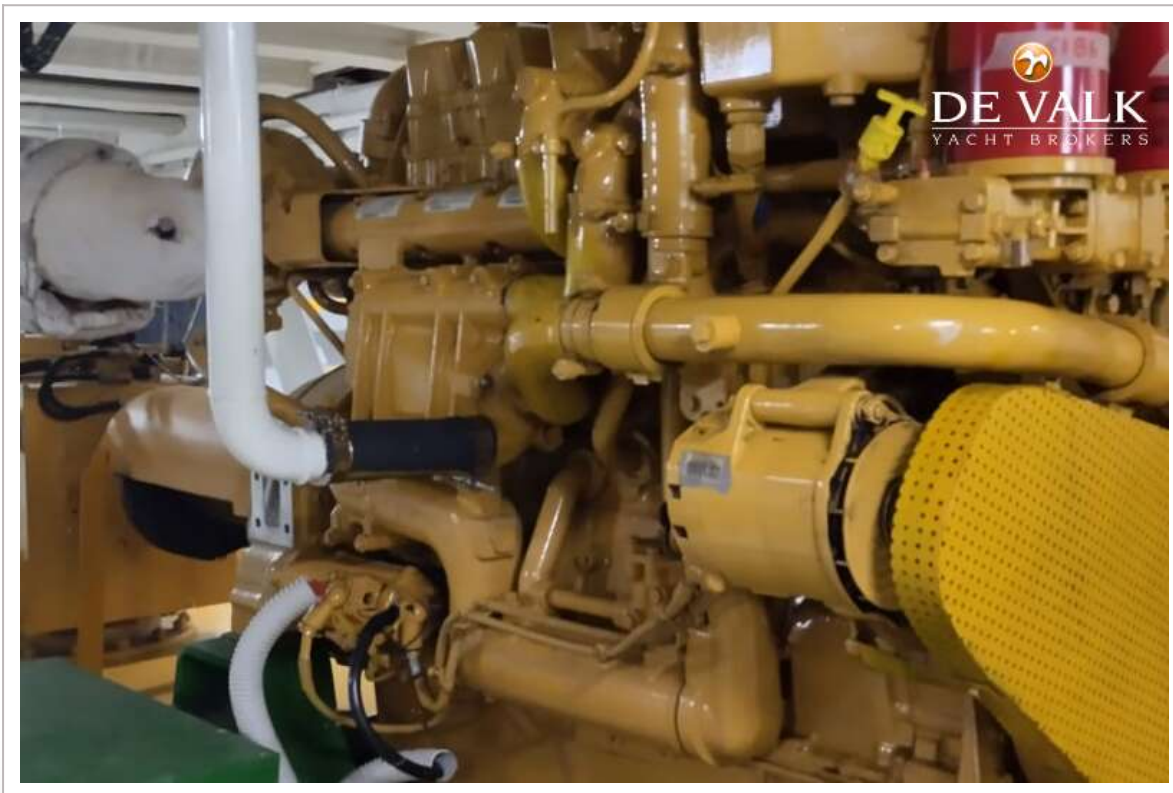




# RO/PAX DOUBLE ENDED FERRY 78 M



# RO/PAX DOUBLE ENDED FERRY 78 M



# RO/PAX DOUBLE ENDED FERRY 78 M



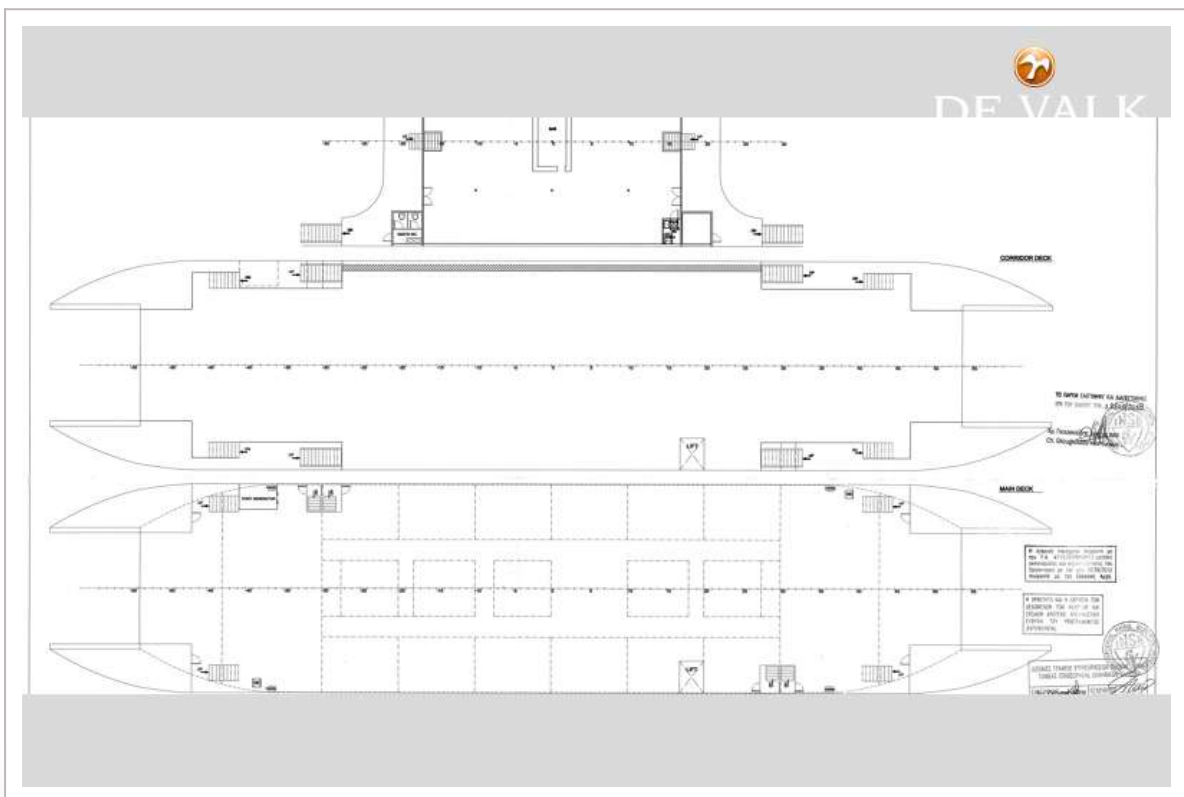
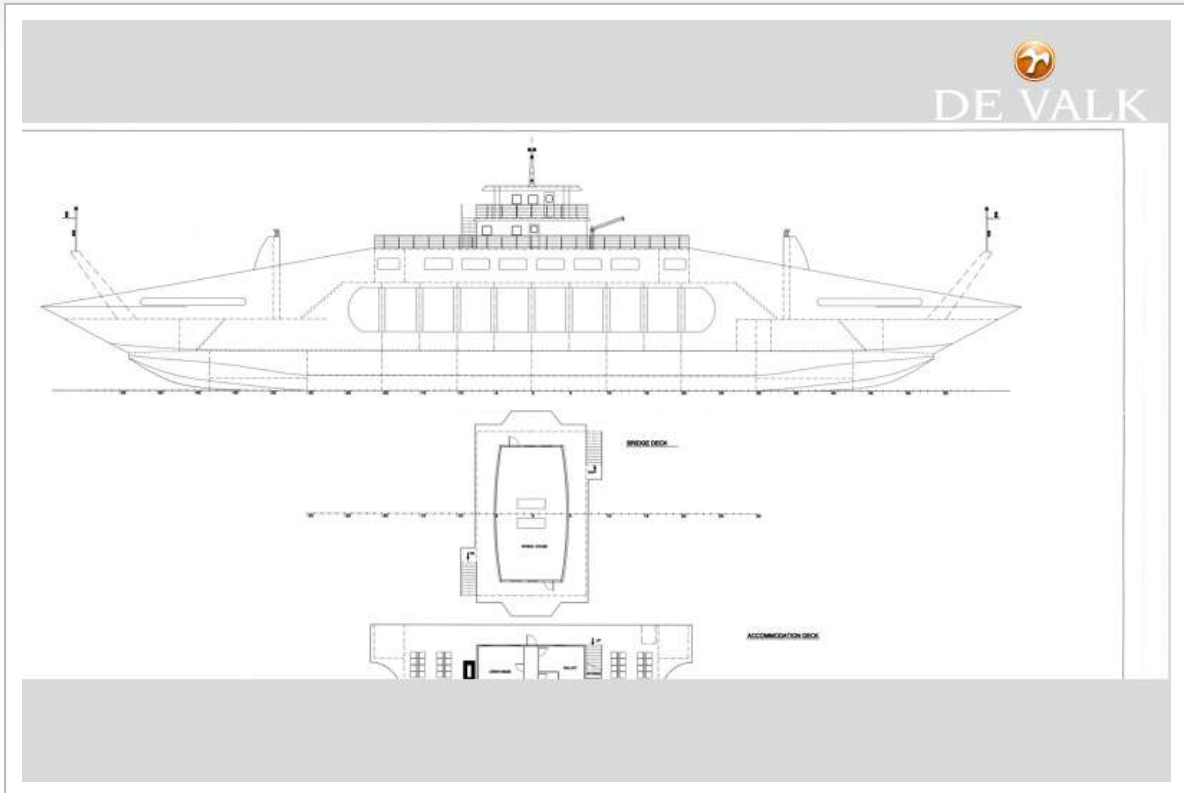


# RO/PAX DOUBLE ENDED FERRY 78 M





# RO/PAX DOUBLE ENDED FERRY 78 M



# RO/PAX DOUBLE ENDED FERRY 78 M

