



DE VALK  
YACHT BROKERS



JEANNEAU SUN ODYSSEY 40.3



DE VALK  
YACHT BROKERS

# JEANNEAU SUN ODYSSEY 40.3

## BROKER'S COMMENTS

Daniel Andrieu, the famous naval architect, designed this Jeanneau Sun Odyssey 40.3 with a hull dedicated to performance and comfort. The owners of this yacht are known to have spared no expense to keep this vessel in perfect condition. Now ready to be admired and inspected at our sales marina in Hindeloopen.

*Hans Visser*

## SPECIFICATIONS

|                     |                         |                |                        |
|---------------------|-------------------------|----------------|------------------------|
| <b>Dimensions</b>   | 12.20 x 3.95 x 1.95 (m) | <b>Builder</b> | Jeanneau France        |
| <b>Built</b>        | 2006                    | <b>Cabins</b>  | 3                      |
| <b>Material</b>     | GRP                     | <b>Berths</b>  | 8                      |
| <b>Engine(s)</b>    | 1 x Yanmar 4JH4E diesel | <b>Hp/Kw</b>   | 53.00 (hp), 38.96 (kw) |
| <b>Asking price</b> | € 109.000 (VAT Paid)    | <b>Lying</b>   | at sales office        |

## CONTACT

|                     |  |                  |                       |
|---------------------|--|------------------|-----------------------|
| <b>Sales office</b> | De Valk Hindeloopen                                      | <b>Telephone</b> | +31 514 52 40 00      |
| <b>Address</b>      | Oosterstrand 1<br>8713 JS Hindeloopen<br>The Netherlands | <b>E-mail</b>    | hindeloopen@devalk.nl |

## DISCLAIMER

These particulars are given in good faith as supplied but cannot be guaranteed.



# JEANNEAU SUN ODYSSEY 40.3

## GENERAL

|                                    |  |
|------------------------------------|--|
| <b>Model</b>                       | JEANNEAU SUN ODYSSEY 40.3  |
| <b>Type</b>                        | sailing yacht  |
| <b>LOA (m)</b>                     | 12,20  |
| <b>LWL (m)</b>                     | 10,17  |
| <b>Beam (m)</b>                    | 3,95   |
| <b>Draft (m)</b>                   | 1,95   |
| <b>Headroom (m)</b>                | 1,90   |
| <b>Year built</b>                  | 2006   |
| <b>Builder</b>                     | Jeanneau France  |
| <b>Country</b>                     | France   |
| <b>Designer</b>                    | D. Andrieu & Jeanneau Design                                     |
| <b>Displacement (t)</b>            | 8,1  |
| <b>Ballast (tonnes)</b>            | 2,4  |
| <b>CE norm</b>                     | A  |
| <b>Hull material</b>               | GRP  |
| <b>Hull colour</b>                 | white  |
| <b>Hull shape</b>                  | round-bilged   |
| <b>Keel type</b>                   | fin keel with bulb   |
| <b>Superstructure material</b>     | GRP  |
| <b>Rubbing strake</b>              | yes  |
| <b>Deck material</b>               | GRP  |
| <b>Deck finish</b>                 | teak   |
| <b>Cockpit deck finish</b>         | teak   |
| <b>Antifouling (year)</b>          | All old systems removed and new setup last application July 2024 |
| <b>Window frame</b>                | aluminium - glued  |
| <b>Window material</b>             | tempered glass   |
| <b>Deckhatch</b>                   | 9x Goyot   |
| <b>Fuel tank (litre)</b>           | polyethylene 130 ltr.  |
| <b>Level indicator (fuel tank)</b> | yes  |
| <b>Freshwater tank (litre)</b>     | polyethylene Two tanks - 300ltr. total                           |



# JEANNEAU SUN ODYSSEY 40.3

|                              |   |
|------------------------------|---|
| Level indicator (freshwater) | yes   |
| Blackwater tank (litre)      | polyethylene  |
| Blackwater tank extraction   | deck extraction + uw line                                   |
| Wheel steering               | Twin wheel with covers                                      |
| Emergency tiller             | yes   |
| More info on hull            | Hull polished July 2017                                     |
| More info on paintwork       | 2021 system UW 2x epoxy primer, 1x primocon, 2x antifouling |
| Extra info                   | New anode July 2024   |

## ACCOMMODATION

|                       |   |
|-----------------------|---|
| Cabins                | 3   |
| Berths                | 8   |
| Interior              | mahogany  |
| Floor                 | teak and holly  |
| Saloon                | yes   |
| Headroom saloon (m)   | 1.90 mtr.   |
| Heating               | diesel ducted hot air Webasto airtop 5000 (serviced 2021) |
| Chart table           | Sliding   |
| Aft Cabin             | 2x  |
| Convertible berth     | 2x  |
| Galley                | yes   |
| Countertop            | Duropol   |
| Sink                  | stainless steel - double                                  |
| Cooker                | calor gas - Eno - 2 burner                                |
| Oven                  | In cooker   |
| Fridge                | May 2023 new compressor and condenser                     |
| Hot water system      | 220V + engine   |
| Water pressure system | electrical  |
| Crockery              | yes   |
| Owners cabin          | double bed - Forward cabin                                |
| Bed length (m)        | 2.00 x 1.80 mtr. - 2x single deep mattresses              |



# JEANNEAU SUN ODYSSEY 40.3

|                |                          |
|----------------|--------------------------|
| Wardrobe       | shelves                  |
| Guest cabin 1  | double bed Aft cabin     |
| Bed length (m) | 2,07 x 1,50 mtr.         |
| Wardrobe       | hanging and shelves      |
| Guest cabin 2  | double bed Aft cabin     |
| Bed length (m) | 2,07 x 1,50 mtr.         |
| Wardrobe       | hanging and shelves      |
| Bathroom       | shared                   |
| Toilet         | Jabsco                   |
| Toilet system  | yes                      |
| Wash basin     | Yes                      |
| Shower         | Yes                      |
| Extra info     | Smoke alarm + CO monitor |

## MACHINERY

|                       |                           |
|-----------------------|---------------------------|
| No of engines         | 1                         |
| Make                  | Yanmar                    |
| Type                  | 4JH4E                     |
| HP                    | 53                        |
| kW                    | 38.96                     |
| Fuel                  | diesel                    |
| Maximum speed (kn)    | 7,5                       |
| Cruising speed (kn)   | 6                         |
| Consumption (l/hr)    | 3                         |
| Engine cooling system | freshwater heat exchanger |
| Drive                 | shaft                     |
| Engine controls       | yes                       |
| Gearbox               | mechanical                |
| Bowthruster           | electric MaxPower 2015    |
| Exhaust               | watercooled               |
| Propeller type        | fixed                     |



|                                 |                                      |
|---------------------------------|--------------------------------------|
| <b>Manual bilge pump</b>        | 2x                                   |
| <b>Electric bilge pump</b>      | 1x                                   |
| <b>Electrical installation</b>  | 12 / 220V                            |
| <b>Start battery</b>            | 2020 1 x 105 Ah Sportline            |
| <b>Service battery</b>          | 2020 3x 105Ah Sportline              |
| <b>Bowthruster battery</b>      | New 2021                             |
| <b>Battery charger/inverter</b> | Victron Multiplus Compact 12/1600/70 |
| <b>Shorepower</b>               | with cable                           |

## NAVIGATION

|                                    |   |
|------------------------------------|---|
| <b>Compass</b>                     | 2x Plastimo Horizon 135                                   |
| <b>Depth sounder/log</b>           | 2x Raymarine ST60 TRIDATA                                 |
| <b>Forw. looking depth sounder</b> | RealVision 3D Sonar see Plotter/GPS                       |
| <b>Windset</b>                     | 2x Raymarine ST60 WIND                                    |
| <b>VHF</b>                         | Standard Horizon Explorer                                 |
| <b>Autopilot</b>                   | Raymarine ST6001 control display                          |
| <b>Plotter</b>                     | Raymarine C80 (old)                                       |
| <b>Plotter/GPS</b>                 | Juni 2022 12" AXIOM+ 12 / mit integr. RealVision 3D Sonar |
| <b>Navtex</b>                      | Mcmurdo ICS NAV6  |
| <b>Navigation lights</b>           | yes   |

## EQUIPMENT

|                         |                        |
|-------------------------|------------------------|
| <b>Sprayhood</b>        | New 2017               |
| <b>Cockpit cover</b>    | New 2017               |
| <b>Window cover</b>     | For Hatches            |
| <b>Cockpit cushions</b> | 6 + 2 railing cushions |
| <b>Cockpit table</b>    | Folding teak           |
| <b>Bathing platform</b> | yes                    |
| <b>Boarding ladder</b>  | stainless steel        |
| <b>Deck shower</b>      | Hot/Cold               |
| <b>Anchor</b>           | CQR Plough             |



# JEANNEAU SUN ODYSSEY 40.3

|                            |                                   |
|----------------------------|-----------------------------------|
| Anchor chain               | yes                               |
| Windlass                   | electrical Quick                  |
| Deck wash                  | Pump + Hose (under cockpit table) |
| Outboard support           | yes                               |
| Sea railing                | wire - stainless steel            |
| Grab rail (superstructure) | teak                              |
| Railing side opening gates | yes                               |
| Pushpit                    | yes                               |
| Pulpit                     | yes                               |
| Lifebuoy                   | yes                               |
| Danbuoy                    | + rescue sling (white bag)        |
| Safety lines on deck       | In stern port cupboard            |
| Horn                       | Hand held                         |
| Radar reflector            | yes                               |
| Fenders                    | 9x + one ball fender              |
| Mooring lines              | yes                               |
| Spare parts                | yes                               |
| TV                         | yes                               |
| Radio-cd player            | JVC                               |
| DVD player                 | JVC                               |
| Surround Sound System      | yes                               |
| Cockpit speakers           | yes                               |
| Speakers in salon          | yes                               |
| Fire extinguisher          | 4                                 |

## RIGGING

|                  |           |
|------------------|-----------|
| Rigging          | sloop     |
| Standing rigging | wire      |
| Brand mast       | Seldén    |
| Material mast    | aluminium |
| Spreaders        | 2 pair    |



# JEANNEAU SUN ODYSSEY 40.3

|                                |   |
|--------------------------------|---|
| <b>Mainsail</b>                | 36,2 m <sup>2</sup> offshore performance acc laminate tri radial. inspected by de Vries 2020 2020 Uk de Vries Sails |
| <b>Mainsail cover</b>          | Checked 2024  |
| <b>Fully battened mainsail</b> | Checked 2024  |
| <b>Jib II</b>                  | 25 m <sup>2</sup> offshore performance acc laminate tri radial. 2020  |
| <b>Genoa</b>                   | 41,2 m <sup>2</sup> offshore performance acc laminate tri radial. 2020  |
| <b>Genoa furler</b>            | Facnor SD180  |
| <b>Spinnaker</b>               | In Shute (2007)   |
| <b>Reefing System</b>          | quick-one-line-reefing 2 reefs  |
| <b>Backstay adjuster</b>       | mechanical  |
| <b>Boomvang</b>                | gasspring   |
| <b>Primary sheet winch</b>     | 2x Harken 40 two speed  |
| <b>Genoa sheetwinches</b>      | 2x Harken 46 two speed  |
| <b>Halyard winches</b>         | 2x Harken 40 two speed  |
| <b>Winchcovers</b>             | 3x  |
| <b>Spi-pole</b>                | aluminium   |
| <b>Extra info</b>              | Old Hagoort sails extra   |





# JEANNEAU SUN ODYSSEY 40.3



# JEANNEAU SUN ODYSSEY 40.3



# JEANNEAU SUN ODYSSEY 40.3



# JEANNEAU SUN ODYSSEY 40.3



# JEANNEAU SUN ODYSSEY 40.3



# JEANNEAU SUN ODYSSEY 40.3



# JEANNEAU SUN ODYSSEY 40.3



# JEANNEAU SUN ODYSSEY 40.3

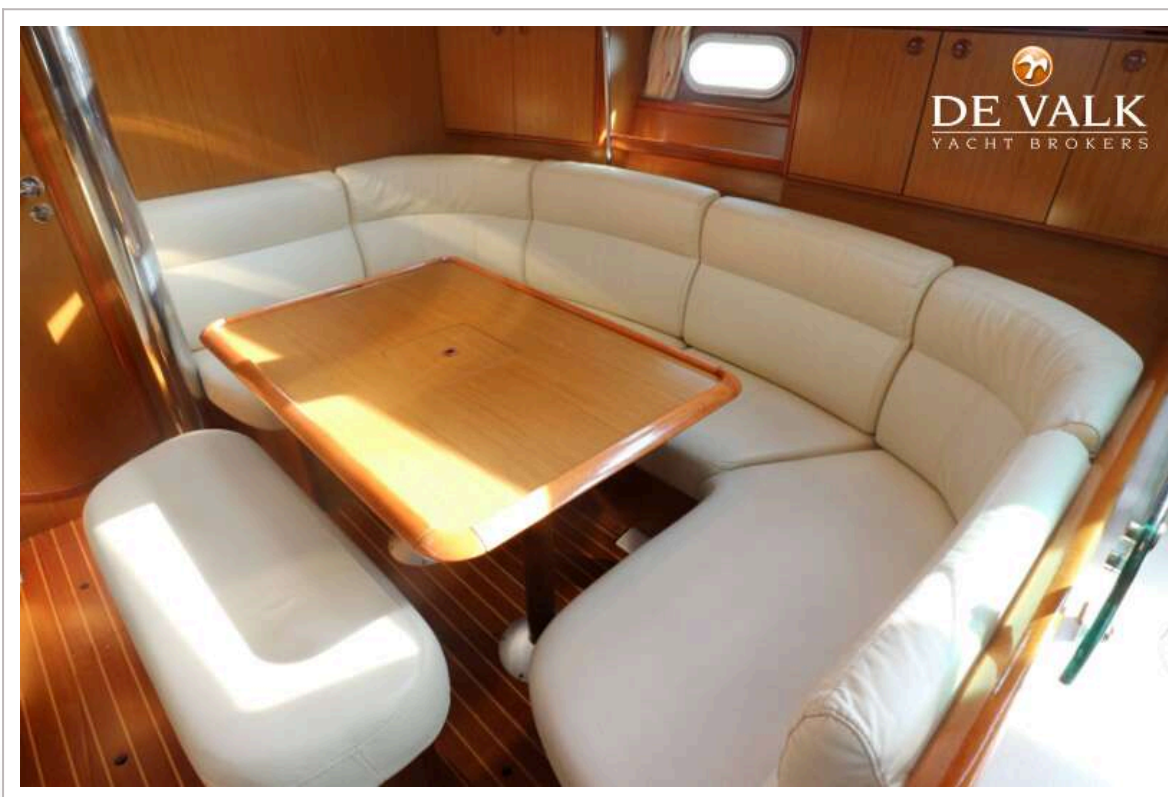




# JEANNEAU SUN ODYSSEY 40.3



# JEANNEAU SUN ODYSSEY 40.3



# JEANNEAU SUN ODYSSEY 40.3



# JEANNEAU SUN ODYSSEY 40.3



# JEANNEAU SUN ODYSSEY 40.3



# JEANNEAU SUN ODYSSEY 40.3



# JEANNEAU SUN ODYSSEY 40.3

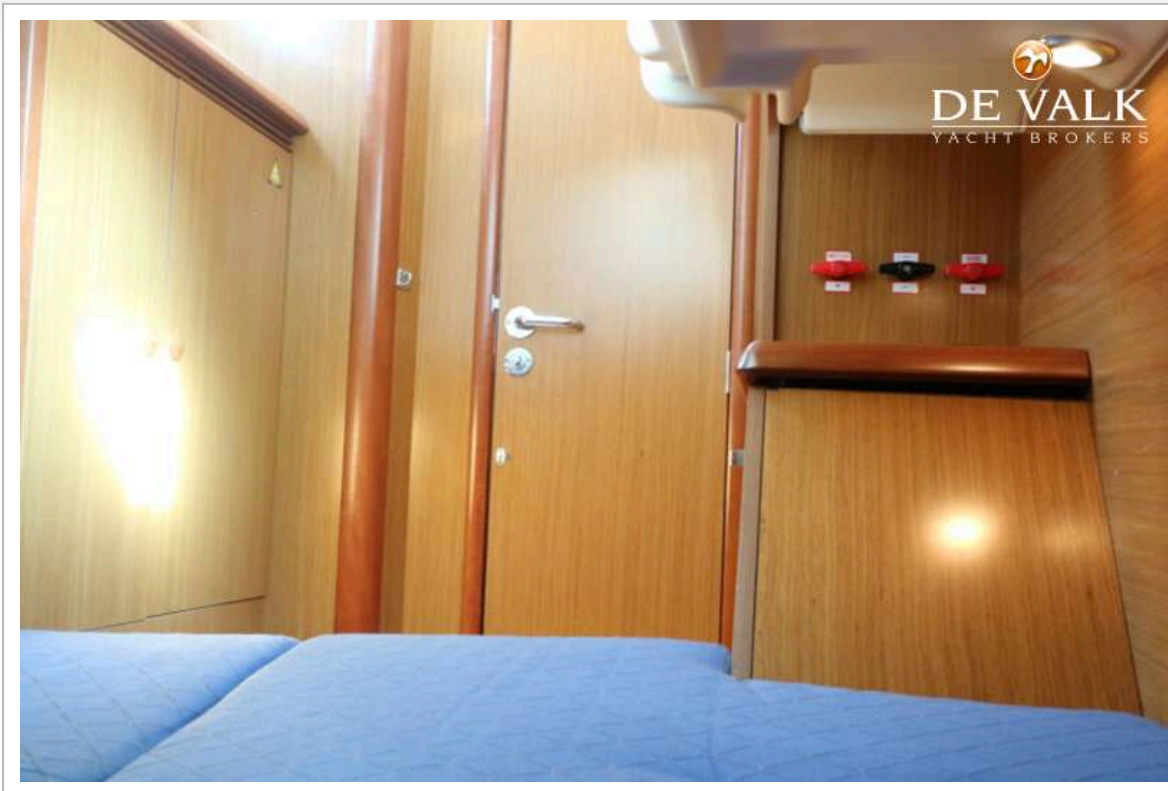


# JEANNEAU SUN ODYSSEY 40.3

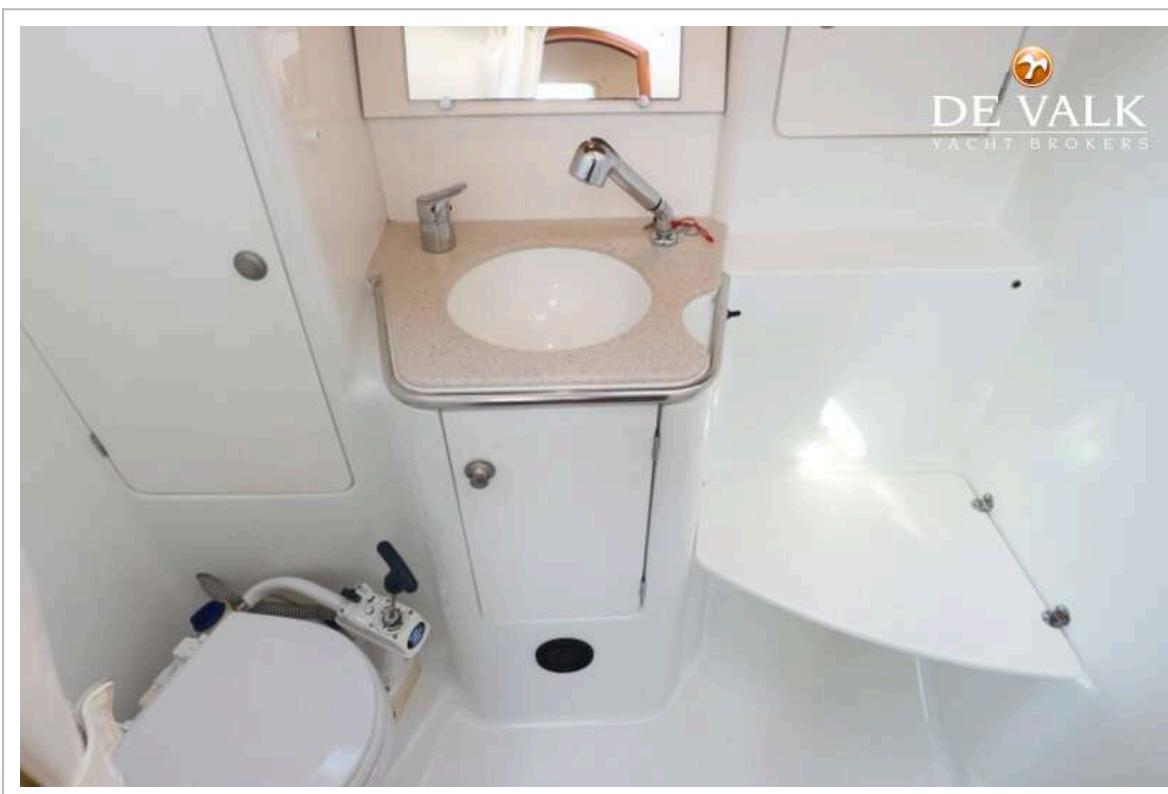
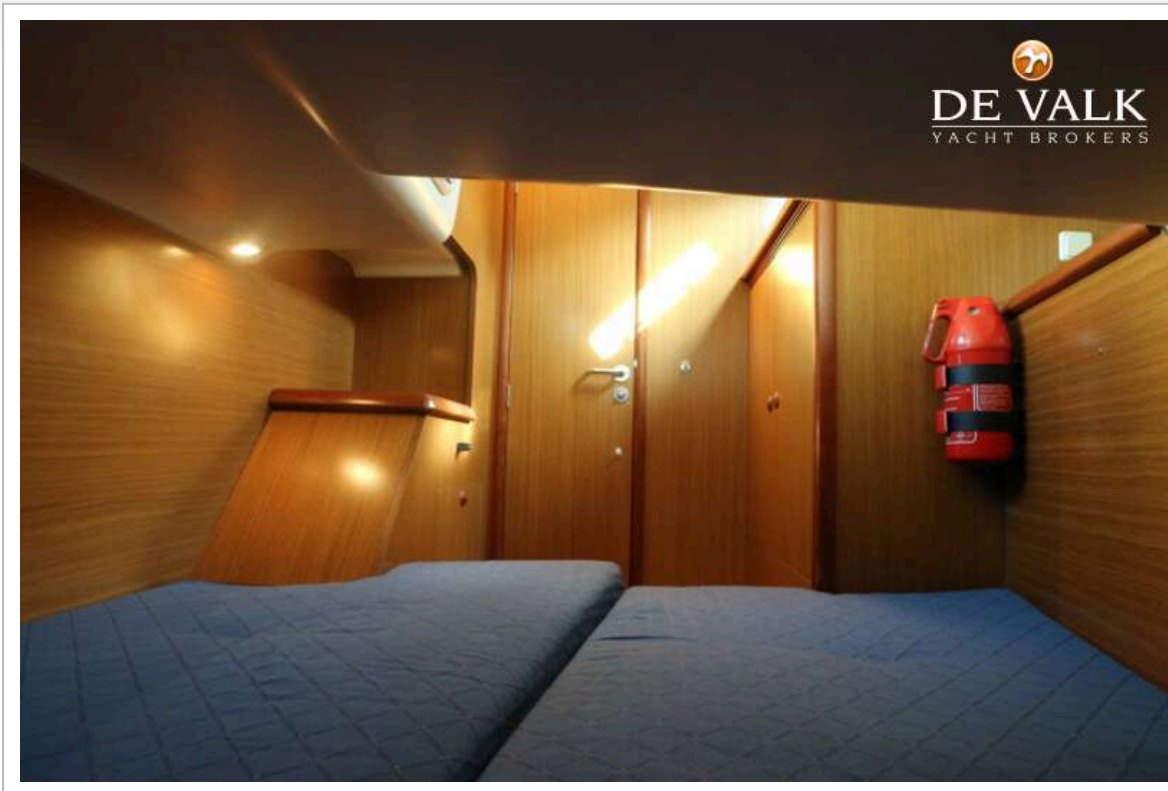


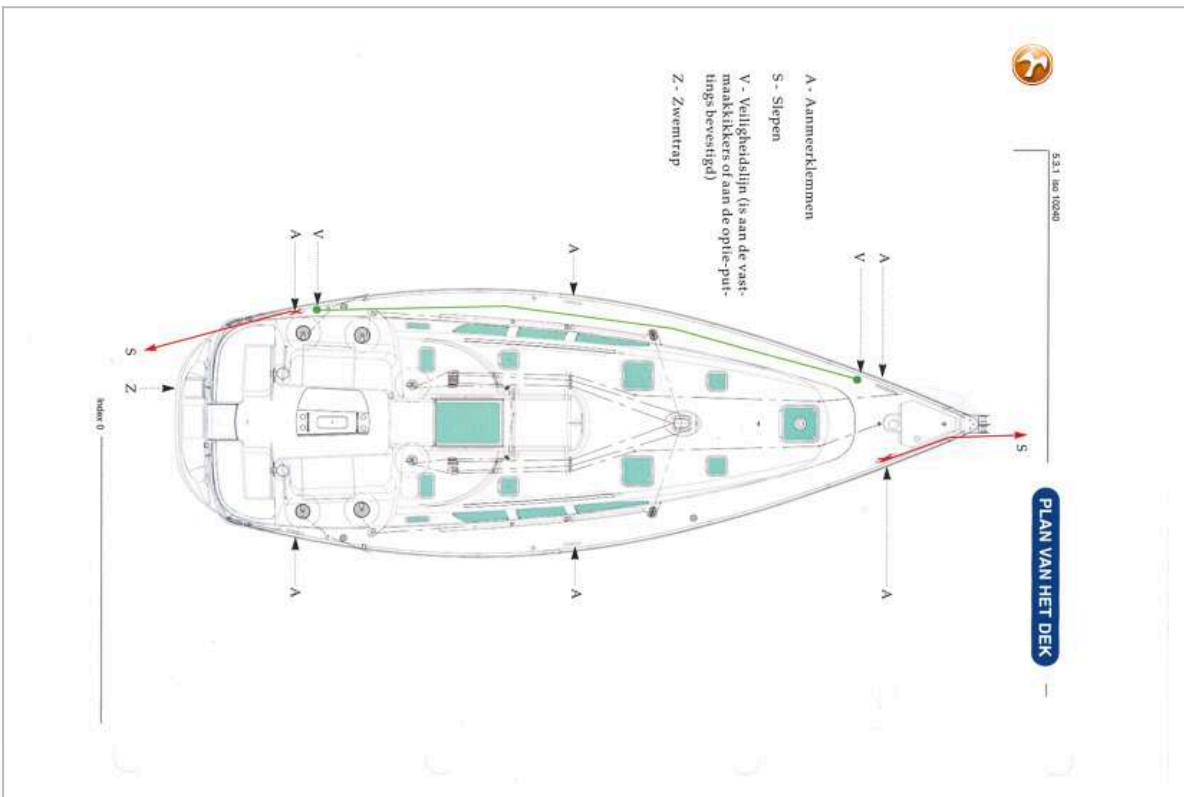
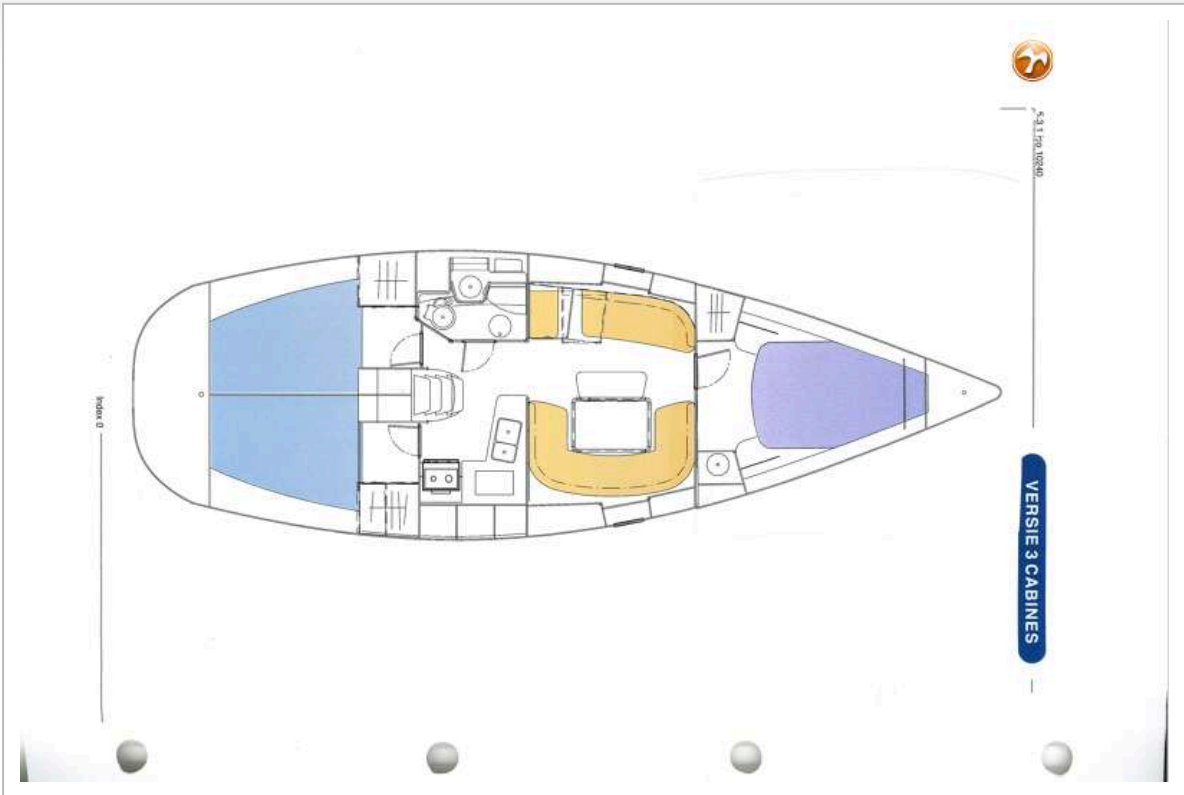


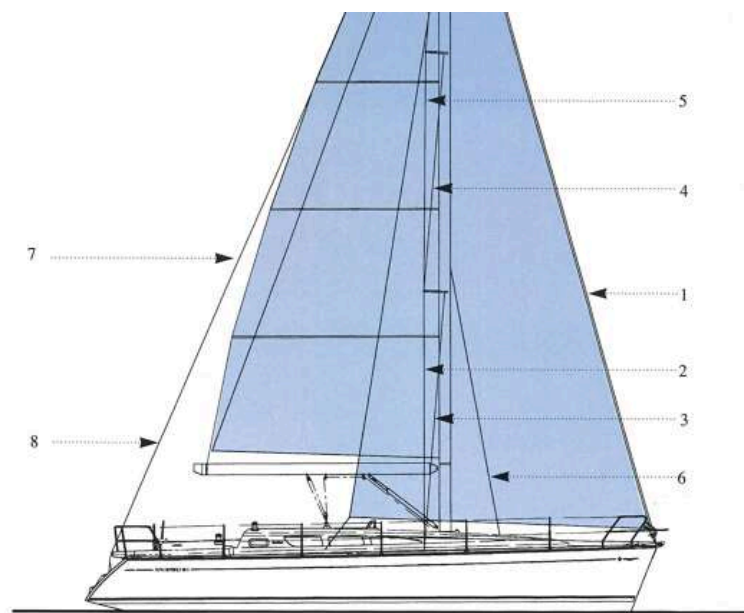
# JEANNEAU SUN ODYSSEY 40.3



# JEANNEAU SUN ODYSSEY 40.3







|   | Naam    | Aan. | Type | Ø (mm) | Lengte (m) |
|---|---------|------|------|--------|------------|
| 1 | Topstag | 1    | 1x19 | 10     | 15,59      |
| 2 | V1      | 2    | 1x19 | 10     | 5,42       |

