



DE VALK
YACHT BROKERS



SEA RAY 52 SEDAN BRIDGE



DE VALK
YACHT BROKERS

SEA RAY 52 SEDAN BRIDGE

BROKER'S COMMENTS

The owner has found a new boat so we are encouraging offers. This Sea Ray is Immaculate. I have never seen a cleaner boat even for a new boat. Both the owners and guest stateroom are double beds, plus a second guest stateroom with twin beds.

Mark Damen

SPECIFICATIONS

| | | | |
|---------------------|--------------------------|----------------|------------------------------|
| Dimensions | 15.84 x 4.53 x 2.52 (m) | Builder | Sea Ray |
| Built | 2005 | Cabins | 3 |
| Material | GRP | Berths | 6 |
| Engine(s) | 2 x MAN 2876LE402 diesel | Hp/Kw | 2 x 698.00 (hp), 513.73 (kw) |
| Asking price | € 249.000 (VAT Paid) | Lying | at sales office |

CONTACT

| | | | |
|---------------------|--|------------------|-----------------------|
| Sales office | De Valk Costa del Sol | Telephone | +34951120059 |
| Address | Southern Spain Region Malaga Spain | E-mail | costadelsol@devalk.nl |

DISCLAIMER

These particulars are given in good faith as supplied but cannot be guaranteed.



SEA RAY 52 SEDAN BRIDGE

GENERAL

| | |
|-------------------------|-------------------------|
| Model | SEA RAY 52 SEDAN BRIDGE |
| Type | motor yacht |
| LOA (m) | 15,84 |
| Beam (m) | 4,53 |
| Draft (m) | 2,52 |
| Year built | 2005 |
| Launched | 2005 |
| Builder | Sea Ray |
| Country | U.S.A. |
| Displacement (t) | 29,16 |
| Hull material | GRP |
| Hull colour | white |
| Superstructure material | GRP |
| Cockpit deck finish | non-skid moulded in |
| Flybridge | yes |
| Flybridge cover | yes |
| Flybridge suncover | yes |
| Radar arch | non collapsible |
| Fuel tank (litre) | 980 |
| Fuel tank 2 (litre) | 980 |
| Freshwater tank (litre) | 400 |
| Greywater tank (litre) | yes |
| Wheel steering | yes |
| Inside helm position | yes |
| Flybridge helm position | yes |

ACCOMMODATION

| | |
|--------------|-----|
| Cabins | 3 |
| Berths | 6 |
| Open cockpit | yes |



SEA RAY 52 SEDAN BRIDGE

| | |
|-----------------------------|--------------|
| Saloon | yes |
| Air-conditioning | yes |
| Dinette | yes |
| Sliding door to cockpit | yes |
| Galley | yes |
| Countertop | yes |
| Sink | yes |
| Oven | yes |
| Microwave | yes |
| Fridge | yes |
| Hot water system | yes |
| Water pressure system | yes |
| Owners cabin | Double Berth |
| Wardrobe | yes |
| Bathroom | yes |
| Toilet system | yes |
| Wash basin | yes |
| Shower | yes |
| Guest cabin 1 | Double Berth |
| Wardrobe | hanging |
| Bathroom | shared |
| Toilet system | yes |
| Wash basin | yes |
| Shower | yes |
| Guest cabin 2 | Twin Berth'd |
| Bathroom | shared |
| Toilet system | yes |
| Wash basin | yes |
| Shower | yes |
| Washing machine/dryer combi | yes |
| Flybridge | yes |
| Wet bar | yes |



SEA RAY 52 SEDAN BRIDGE

MACHINERY

| | |
|--------------------------|-----------|
| No of engines | 2 |
| Make | MAN |
| Type | 2876LE402 |
| HP | 698 |
| kW | 513.73 |
| Fuel | diesel |
| Year installed | 2005 |
| Maximum speed (kn) | 27 |
| Cruising speed (kn) | 24 |
| Engine hours | 900 |
| Bowthruster | yes |
| Manual bilge pump | yes |
| Electric bilge pump | yes |
| Bilge alarm | yes |
| Generator | Onan 9kVA |
| Batteries | yes |
| Start battery | yes |
| Generator battery | yes |
| Battery charger/inverter | yes |
| Shorepower | yes |

NAVIGATION

| | |
|----------------------|-----------|
| Compass on flybridge | yes |
| Depth sounder | yes |
| VHF | Raymarine |
| Autopilot | Raymarine |
| Radar | yes |
| GPS | Raymarine |
| EPIRB | EPIRB |
| Navigation lights | yes |



SEA RAY 52 SEDAN BRIDGE

EQUIPMENT

| | |
|------------------|--|
| Fixed hardtop | yes |
| Sun awning | yes |
| Cockpit cushions | New Sunbrella |
| Cockpit chairs | 2 |
| Gangway | Motorized |
| Anchor chain | yes |
| Anchor chain | yes |
| Windlass | yes |
| Dinghy | Hiegfield 320 2019 |
| Outboard | Honda 10 PK |
| Life raft | Needs to be renewed |
| Lifejackets | yes |
| Horn | yes |
| Fenders | yes |
| TV | Audiosonic TV in cabins (2), Radio stereo/CD Clarion in saloon |
| Radio | Clarion |
| Extra info | 220v air Dive Compressor |



SEA RAY 52 SEDAN BRIDGE



SEA RAY 52 SEDAN BRIDGE



SEA RAY 52 SEDAN BRIDGE



SEA RAY 52 SEDAN BRIDGE



SEA RAY 52 SEDAN BRIDGE



SEA RAY 52 SEDAN BRIDGE



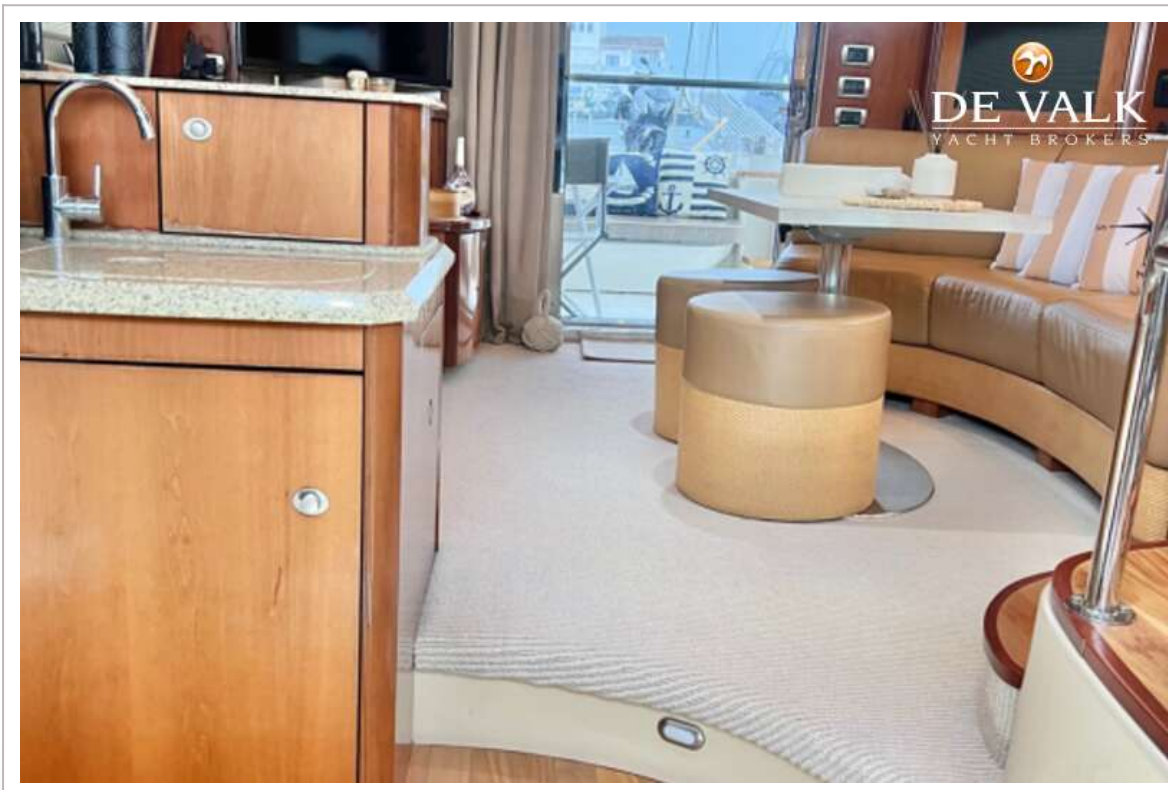
SEA RAY 52 SEDAN BRIDGE



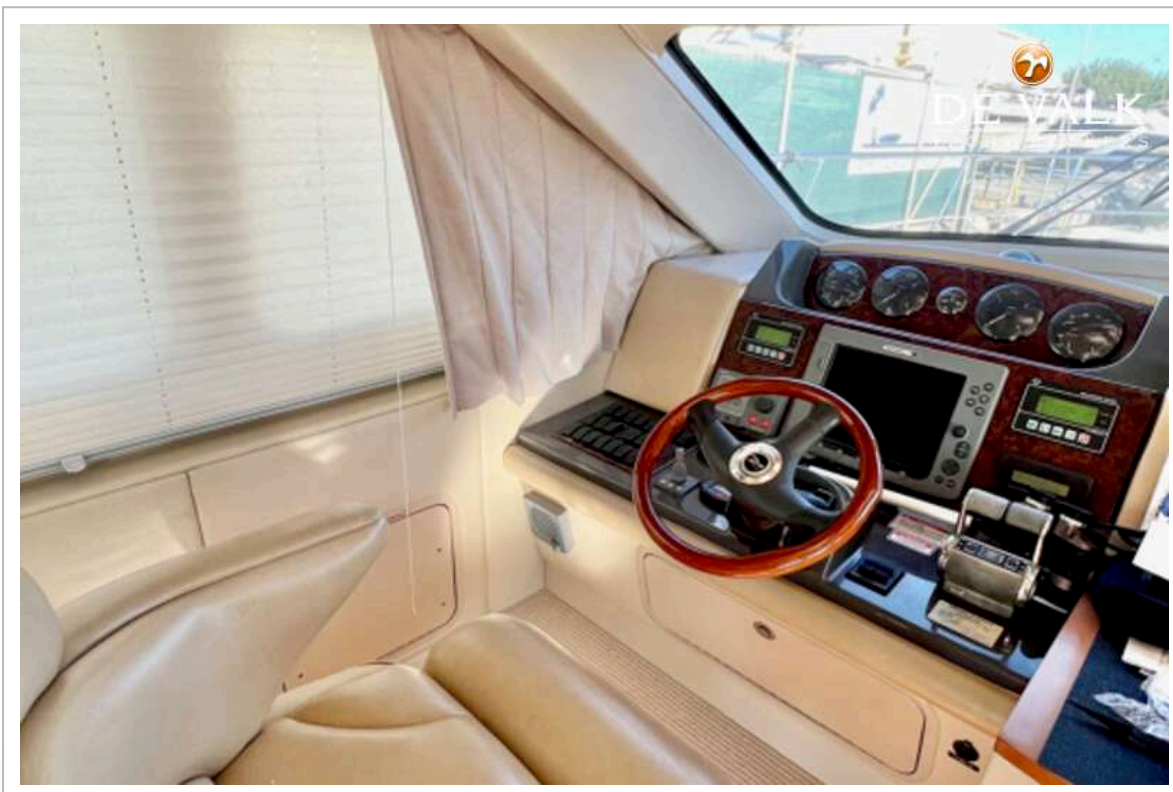
SEA RAY 52 SEDAN BRIDGE



SEA RAY 52 SEDAN BRIDGE



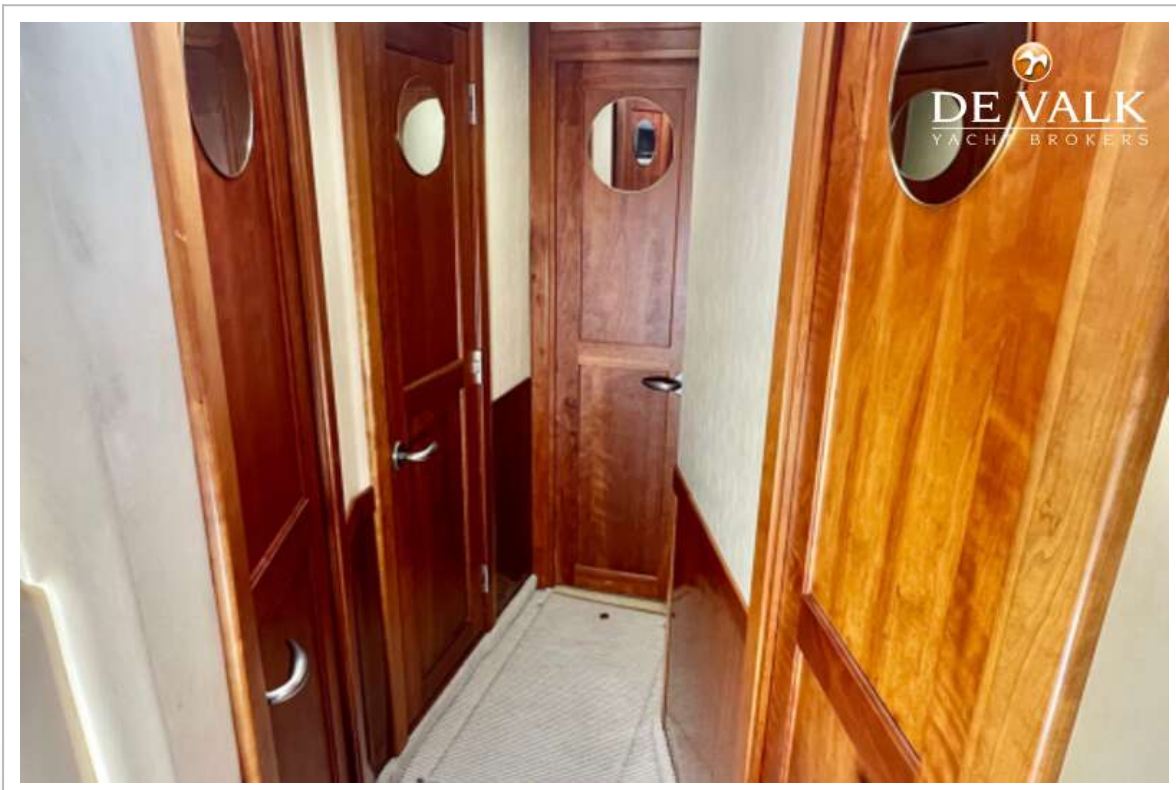
SEA RAY 52 SEDAN BRIDGE



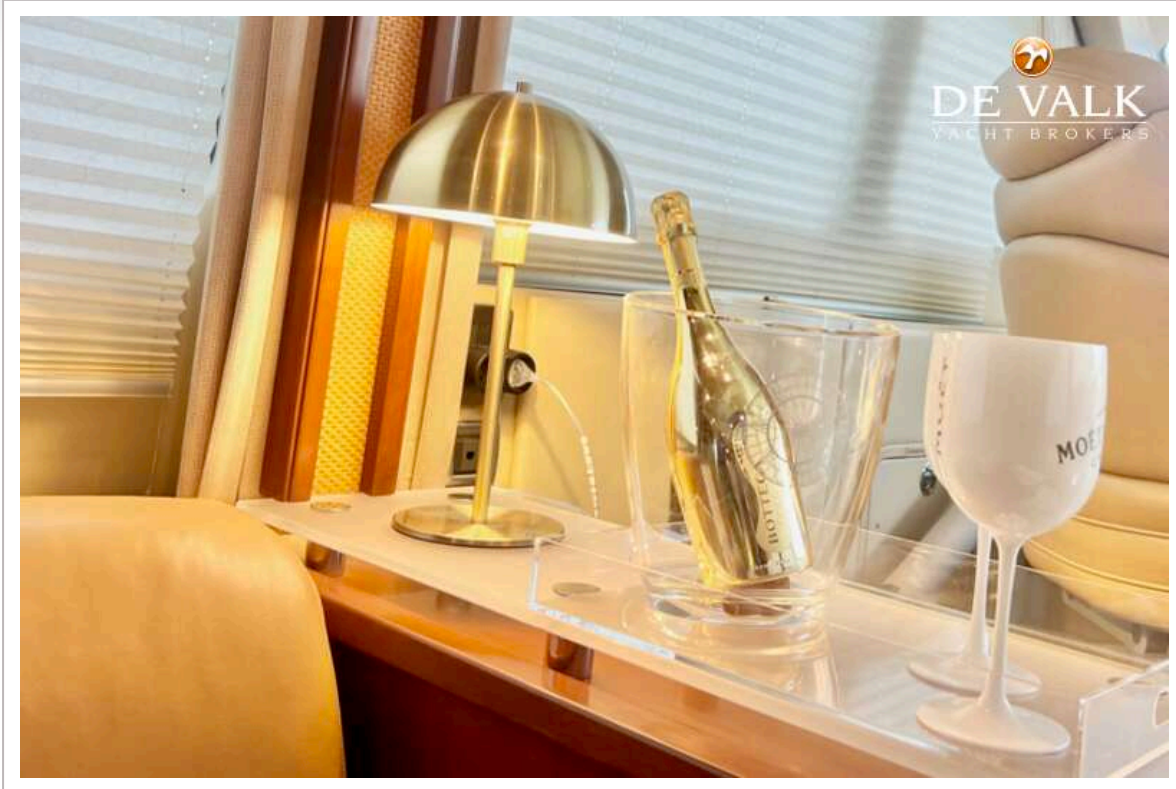
SEA RAY 52 SEDAN BRIDGE



SEA RAY 52 SEDAN BRIDGE



SEA RAY 52 SEDAN BRIDGE



SEA RAY 52 SEDAN BRIDGE



SEA RAY 52 SEDAN BRIDGE

