



DE VALK
YACHT BROKERS



HALLBERG RASSY 43 MK I



DE VALK
YACHT BROKERS

HALLBERG RASSY 43 MK I

BROKER'S COMMENTS

HR 43 MKI is one of the prettiest boats ever built by Hallberg-Rassy. This is a well-built blue water cruiser. The interior floor is all in one level, there is a seagoing galley, a windshield, a rubbing strake to the hull, big engine, generous tankage and timeless beautiful lines with a natural grace.

Sofia Iliia-Salvanou

SPECIFICATIONS

Dimensions	13.57 x 4.08 x 2 (m)	Builder	HALLBERG RASSY VARVS AB
Built	2005	Cabins	
Material	GRP	Berths	
Engine(s)	1 x VOLVO PENTA D2-75 diesel	Hp/Kw	75 (hp), 55.20 (kw)
Asking price	€ 325.000 (VAT Paid)	Lying	elsewhere / not at sales office

CONTACT

Sales office	De Valk Corfu	Telephone	(+30) 266 111 8095
Address	New Port of Corfu, near Gouvia Marina 490 83 Corfu Greece	E-mail	corfu@devalk.nl

DISCLAIMER

These particulars are given in good faith as supplied but cannot be guaranteed.



HALLBERG RASSY 43 MK I

GENERAL

Model	HALLBERG RASSY 43 MK I
Type	sailing yacht
LOA (m)	13,57
LWL (m)	11,75
Beam (m)	4,08
Draft (m)	2,00
Year built	2005
Builder	HALLBERG RASSY VARVS AB
Country	Sweden
Designer	German Frers
Displacement (t)	12,7
CE norm	A
Hull material	GRP
Hull colour	white
Keel type	fin keel
Superstructure material	GRP
Deck material	GRP
Deck finish	teak
Cockpit deck finish	teak
Antifouling (year)	2024
Window material	glass
Deckhatch	yes
Portholes	yes
Insulation	foam
Fuel tank (litre)	stainless steel 395 X 1 TANK
Freshwater tank (litre)	650 (420+230) Two tanks
Blackwater tank (litre)	25
Wheel steering	yes

ACCOMMODATION



HALLBERG RASSY 43 MK I

Floor	teak
Saloon	yes
Heating	yes
Navigation center	yes
Chart table	yes
Aft Cabin	yes
Dinette	yes
Galley	yes
Countertop	yes
Sink	yes
Cooker	calor gas
Oven	yes
Gas alarm	yes
Fridge	yes
Freezer	yes
Hot water system	yes
Water pressure system	yes
Coffee maker	yes
Crockery	yes
Owners cabin	double bed
Bathroom	yes
Toilet	en suite
Wash basin	in the bathroom
Shower	en suite
Guest cabin 1	double bed
Wardrobe	yes
Bathroom	yes
Toilet	yes
Wash basin	in the bathroom
Shower	yes
Guest cabin 2	double bed
Wardrobe	yes



HALLBERG RASSY 43 MK I

Bathroom	yes
Toilet	yes
Wash basin	in the bathroom
Shower	yes

MACHINERY

No of engines	1
Make	VOLVO PENTA
Type	D2-75
HP	75
kW	55.20
Fuel	diesel
Cruising speed (kn)	7
Engine hours	2929
Gearbox	HURTH
Propeller type	folding GORI
Propeller blades	3
Propeller shaft material	stainless steel
Manual bilge pump	Henderson
Electric bilge pump	3500 Gph
Electrical installation	yes
Batteries	Heavy duty batteries x 6
Start battery	1 x 80 Ah
Service battery	5 x 80 Ah
Battery charger	yes
Solar panel	2 x 1000 w
Shorepower	yes

NAVIGATION

Compass	yes
Depth sounder	RAYMARINE ST60



HALLBERG RASSY 43 MK I

Log	yes
VHF	RAYMARINE 240E
Autopilot	RAYMARINE ST7001
Radar	RAYMARINE 2 Kw
GPS	RAYMARINE E80 at Chart table
Navtex	yes
AIS transceiver	RAYMARINE 856
EPIRB	Ocean signal
Navigation lights	All LED

EQUIPMENT

Bimini	yes
Winter cover	yes
Cockpit cushions	yes
Cockpit table	yes
Boarding ladder	yes
Gangway	yes
Anchor	Delta 24 Kg
Anchor chain	60m galvanized
Windlass	LEWMAR
Dinghy	yes
Outboard	YAMAHA 2,5 Hp
Sea railing	yes
Life raft	yes
Life raft (pers)	For 6 persons
Lifejackets	yes
Lifebuoy	yes
Radar reflector	yes
Fenders	yes
Mooring lines	yes
Spare parts	yes



Fire extinguisher

X 4 plus fire blanket

RIGGING

Rigging

yes

Standing rigging

yes

Spreaders

Triple by SELDEN

Mainsail

Furling in mast. Elvstrom in good condition & a spare one older

Genoa

Furling. In good condition

Genoa II

In good order

Genoa furler

yes

Halyard winches

yes

Multifunctional winches

yes



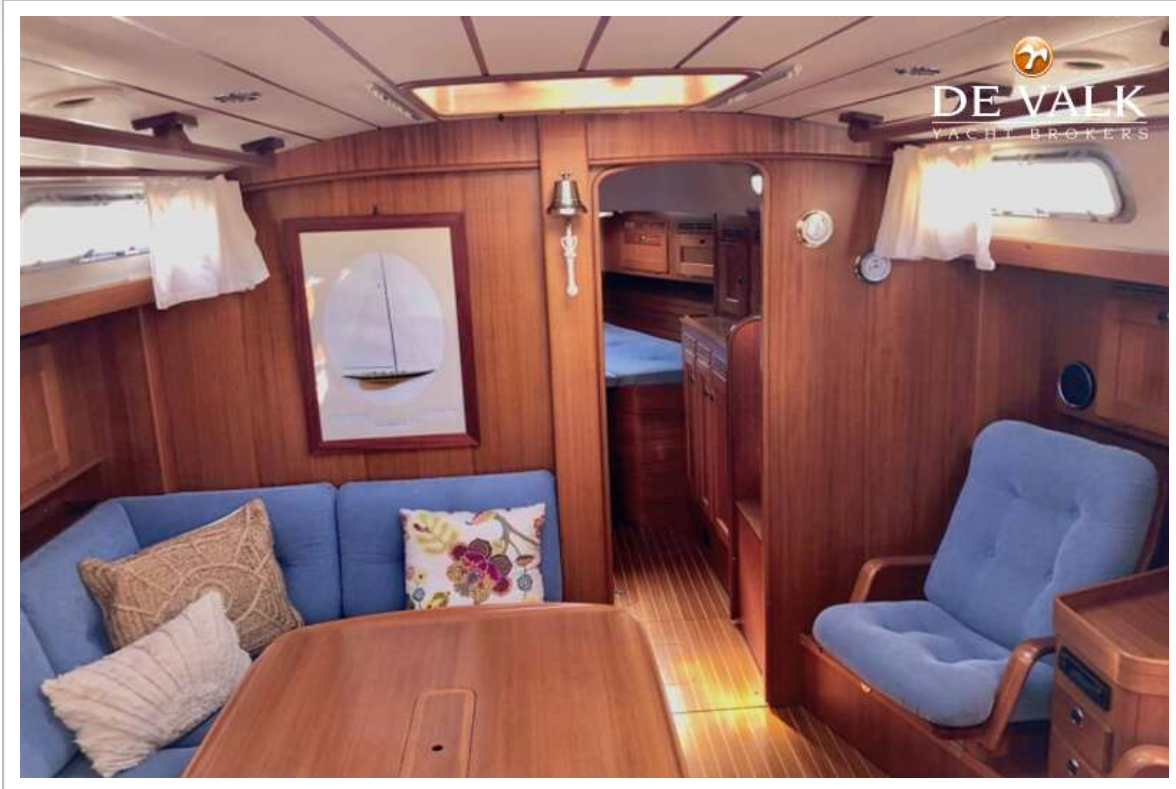
HALLBERG RASSY 43 MK I



HALLBERG RASSY 43 MK I



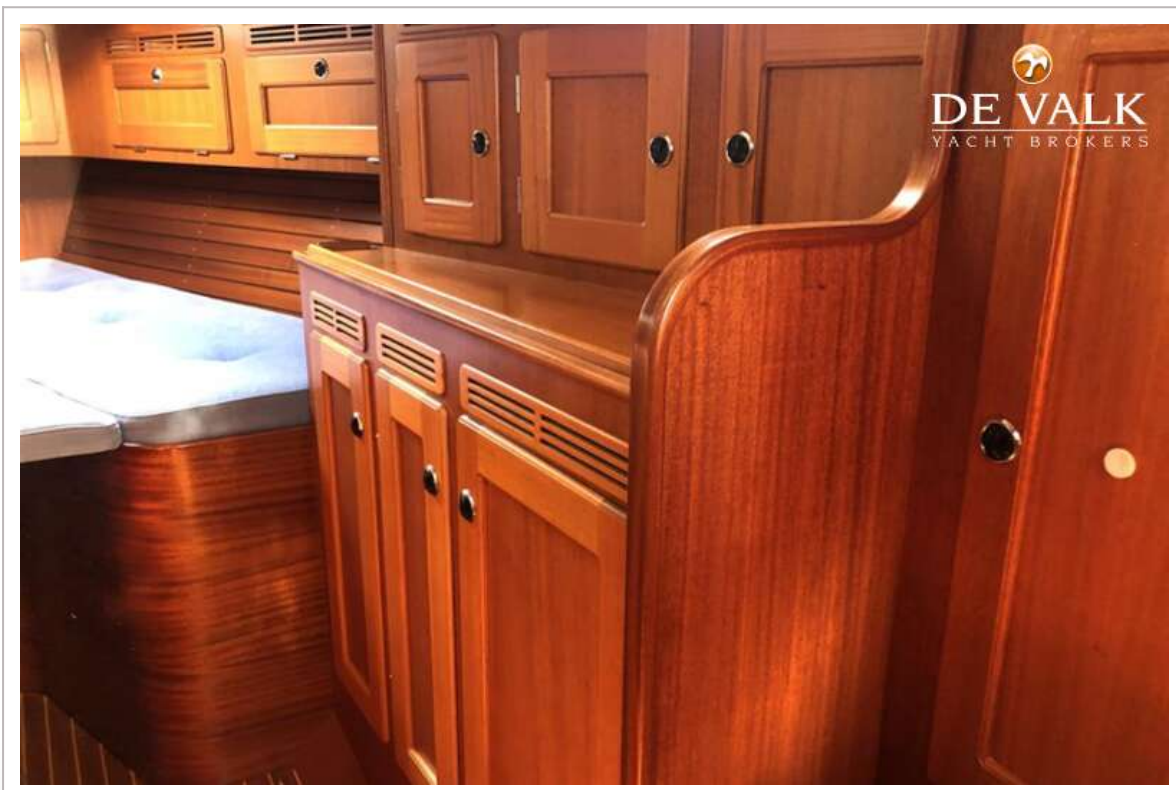
HALLBERG RASSY 43 MK I



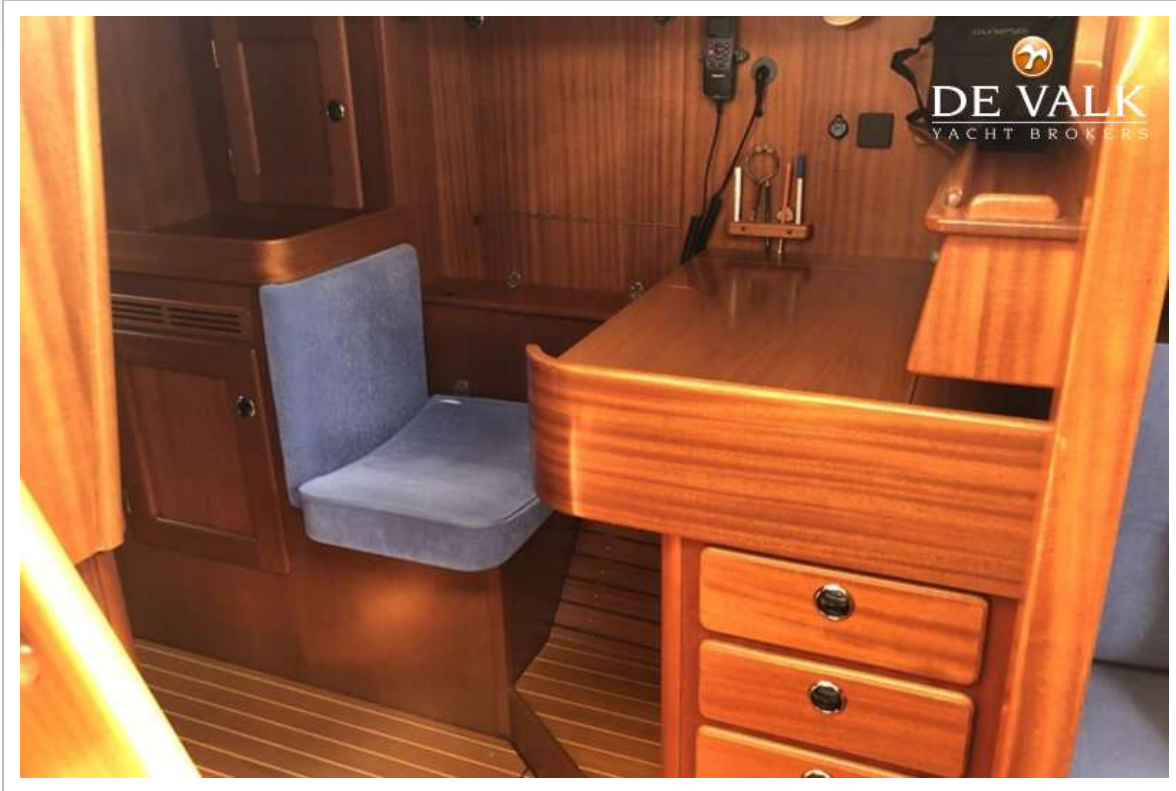
HALLBERG RASSY 43 MK I



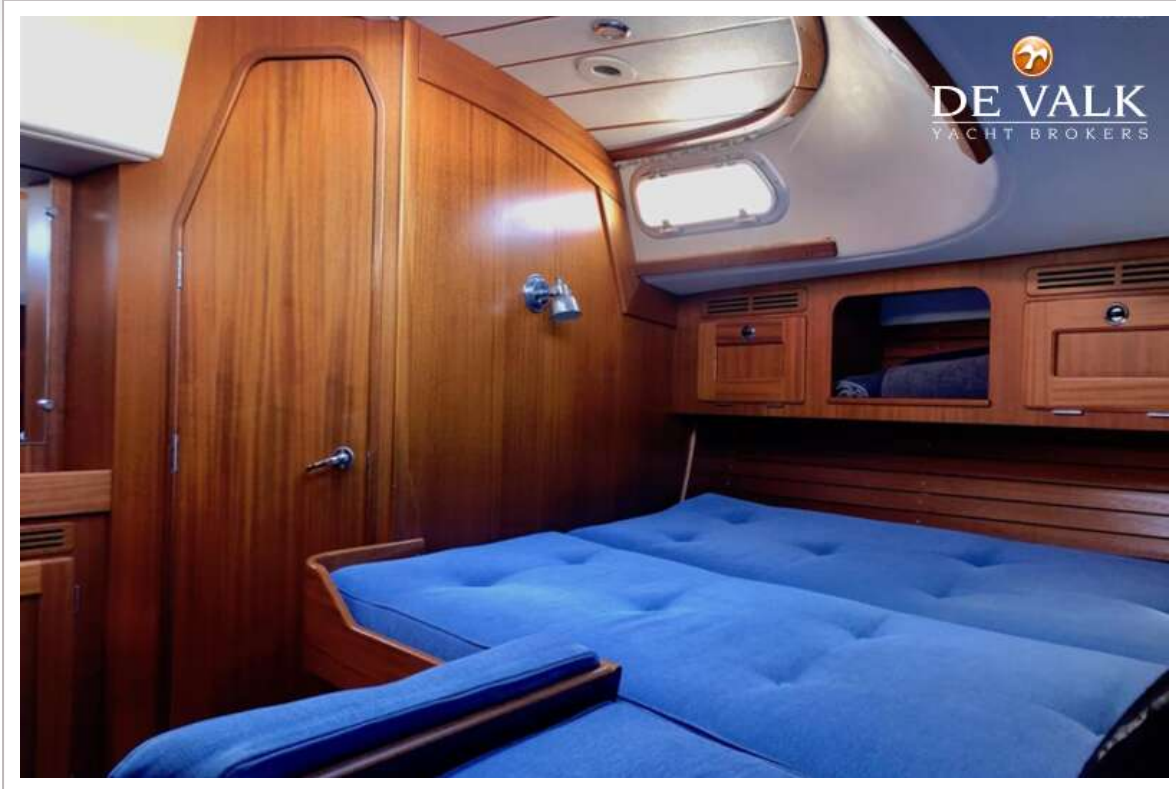
HALLBERG RASSY 43 MK I



HALLBERG RASSY 43 MK I



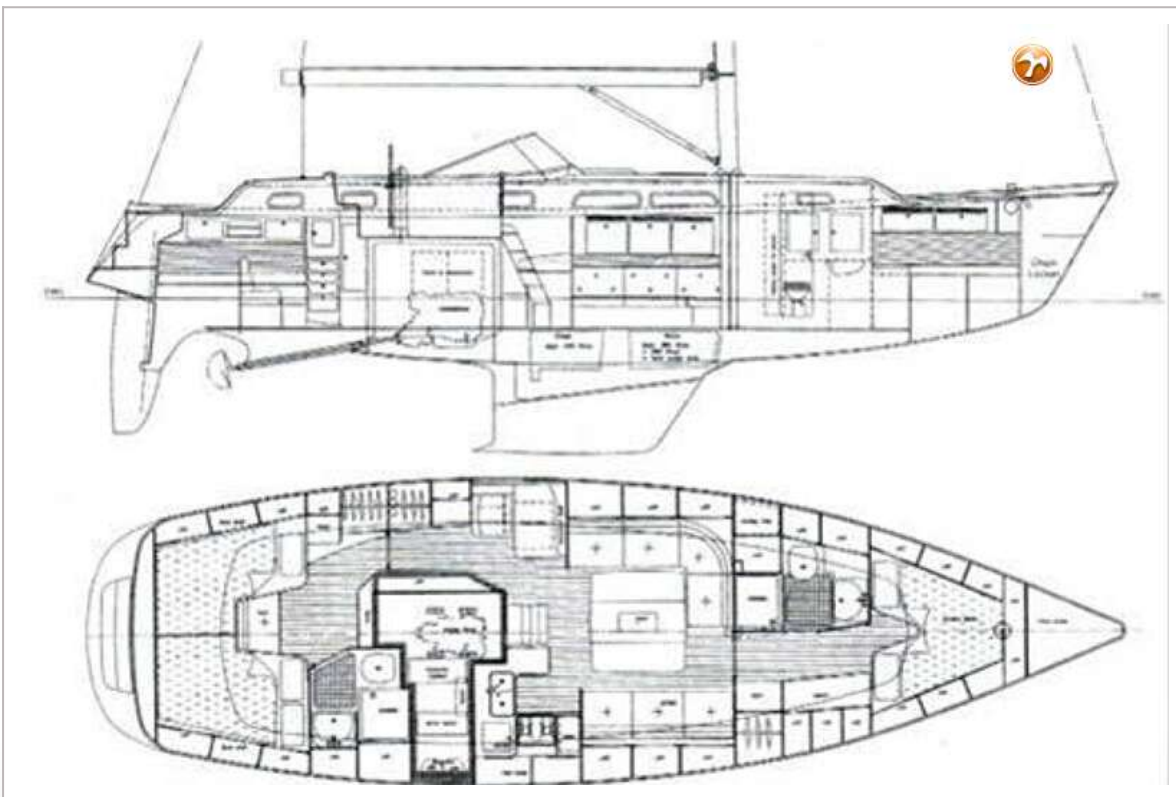
HALLBERG RASSY 43 MK I



HALLBERG RASSY 43 MK I



HALLBERG RASSY 43 MK I



HALLBERG RASSY 43 MK I



DE VALK
YACHT BROKERS

