



DE VALK
YACHT BROKERS



CUSTOM ALUMINIUM CRUISER



DE VALK
YACHT BROKERS

CUSTOM ALUMINIUM CRUISER

BROKER'S COMMENTS

This 35-meter aluminum superyacht combines performance, luxury, and functionality. With five spacious guest cabins, including a full-beam master suite, it accommodates up to 10 guests in comfort. The lightweight aluminum construction ensures excellent fuel efficiency and speed while maintaining durability for long-range cruising. Expansive interiors feature large windows at the saloon, offering stunning sea views and abundant natural light. The exterior boasts spacious decks, including a flybridge with a sunbathing area, and a wet bar, as well as a shaded aft lounge. Perfect for private use.

Cristián Figari Jullian

SPECIFICATIONS

| | | | |
|---------------------|-------------------------|----------------|----------------------------------|
| Dimensions | 35.00 x 7.20 x 0.00 (m) | Builder | Greenbay Marine Pte Ltd |
| Built | 1997 | Cabins | 5 |
| Material | Aluminium | Berths | 10 |
| Engine(s) | 2 x MAN diesel | Hp/Kw | 2 x 2,067.00 (hp), 1,521.31 (kw) |
| Asking price | € 1.950.000 (VAT Paid) | Lying | Spain |

CONTACT

| | | | |
|---------------------|--|------------------|-----------------------|
| Sales office | De Valk Costa Blanca | Telephone | +34965021569 |
| Address | Costa Blanca Region 03730 Javea Alicante Spain | E-mail | costablanca@devalk.nl |

DISCLAIMER

These particulars are given in good faith as supplied but cannot be guaranteed.



CUSTOM ALUMINIUM CRUISER

GENERAL

| | |
|-------------------------|--------------------------|
| Model | CUSTOM ALUMINIUM CRUISER |
| Type | motor yacht |
| LOA (m) | 35,00 |
| Beam (m) | 7,20 |
| Year built | 1997 |
| Builder | Greenbay Marine Pte Ltd |
| Country | Singapore |
| Displacement (t) | 62 |
| Gross tonnage | 210 |
| Hull material | aluminium |
| Hull colour | white |
| Superstructure material | aluminium |
| Deck finish | teak |
| Flybridge | yes |
| Flybridge cover | yes |
| Radar arch | yes |
| Fuel tank (litre) | yes |
| Fuel daytank (litre) | yes |
| Freshwater tank (litre) | yes |
| Blackwater tank (litre) | yes |
| Inside helm position | yes |
| Flybridge helm position | yes |

ACCOMMODATION

| | |
|---------------------|-----|
| Cabins | 5 |
| Berths | 10 |
| Crew cabin | X3 |
| Crew berths | X6 |
| Headroom saloon (m) | 220 |
| Heating | yes |



CUSTOM ALUMINIUM CRUISER

| | |
|-----------------------|-----------------|
| Air-conditioning | yes |
| Navigation center | yes |
| Chart table | yes |
| Dining room | yes |
| Galley | yes |
| Countertop | corian |
| Sink | stainless steel |
| Cooker | induction |
| Oven | yes |
| Extractor | yes |
| Fridge | yes |
| Freezer | yes |
| Wine cooler | yes |
| Hot water system | yes |
| Water pressure system | yes |
| Dishwasher | yes |
| Hot water tap | yes |
| Ice maker | yes |
| Coffee maker | yes |
| Crockery | yes |
| Waste compactor | yes |
| Owners cabin | yes |
| Bed length (m) | 2mts |
| Wardrobe | yes |
| Bathroom | yes |
| Toilet | yes |
| Toilet system | vacuum |
| Wash basin | yes |
| Shower | yes |
| Jacuzzi | yes |
| Guest cabin 1 | yes |
| Wardrobe | yes |



CUSTOM ALUMINIUM CRUISER

| | |
|--------------------|----------|
| Bathroom | yes |
| Toilet | yes |
| Toilet system | vacuum |
| Wash basin | yes |
| Shower | yes |
| Guest cabin 2 | yes |
| Wardrobe | yes |
| Bathroom | yes |
| Toilet | yes |
| Toilet system | vacuum |
| Wash basin | yes |
| Shower | yes |
| Guest cabin 3 | yes |
| Bed length (m) | yes |
| Wardrobe | yes |
| Bathroom | yes |
| Toilet | yes |
| Toilet system | vacuum |
| Guest cabin 4 | yes |
| Wardrobe | yes |
| Bathroom | yes |
| Toilet system | electric |
| Wash basin | yes |
| Shower | yes |
| Crew cabin(s) | yes |
| Toilet (crew) | yes |
| Toilet system | vacuum |
| Washing machine | yes |
| Dryer | yes |
| Ironing facilities | yes |
| Sky lounge | yes |



CUSTOM ALUMINIUM CRUISER

MACHINERY

| | |
|------------------------|------------|
| No of engines | 2 |
| Make | MAN |
| HP | 2067 |
| kW | 1521.31 |
| Fuel | diesel |
| Engine cooling system | seawater |
| Drive | shaft |
| Shaft seal | yes |
| Propeller type | fixed |
| Generator | yes |
| Shorepower | with cable |
| Insulation transformer | yes |
| Watermaker | yes |
| Stabilizers | yes |
| Trimtabs | yes |

NAVIGATION

| | |
|-----------------------|-----|
| Compass | yes |
| Compass on flybridge | yes |
| Multi control display | yes |
| Depth sounder/log | yes |
| VHF | yes |
| VHF handheld | yes |
| Autopilot | yes |
| Radar | yes |
| GPS | yes |
| AIS transceiver | yes |
| EPIRB | yes |
| Navigation lights | yes |
| Searchlight | yes |



CUSTOM ALUMINIUM CRUISER

| | |
|------------|-----|
| Loudhailer | yes |
|------------|-----|

EQUIPMENT

| | |
|--------------------------|------------------|
| Bimini | yes |
| Cockpit cushions | yes |
| Cockpit table | yes |
| Cockpit chairs | yes |
| Bathing platform | yes |
| Boarding ladder | yes |
| Windlass | yes |
| Dinghy | rigid inflatable |
| Outboard | yes |
| Deck crane | yes |
| Life raft | yes |
| Lifejackets | yes |
| Wiper | yes |
| Binocular | yes |
| Fenders | yes |
| Mooring lines | yes |
| Tools | yes |
| TV | yes |
| Satellite | yes |
| Speakers in salon | yes |
| Speakers in cabin | yes |
| Clock - barometer | yes |
| Fire extinguisher | yes |
| Auto extinguisher system | yes |



CUSTOM ALUMINIUM CRUISER



CUSTOM ALUMINIUM CRUISER



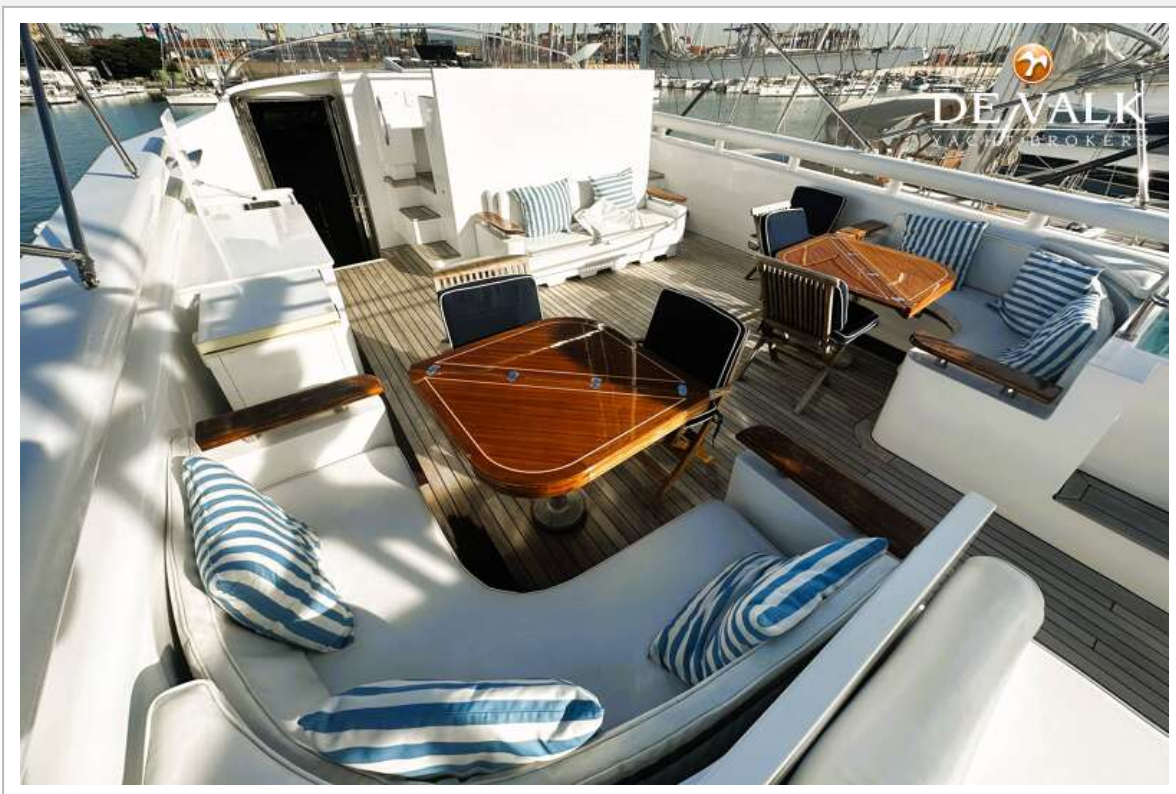
CUSTOM ALUMINIUM CRUISER



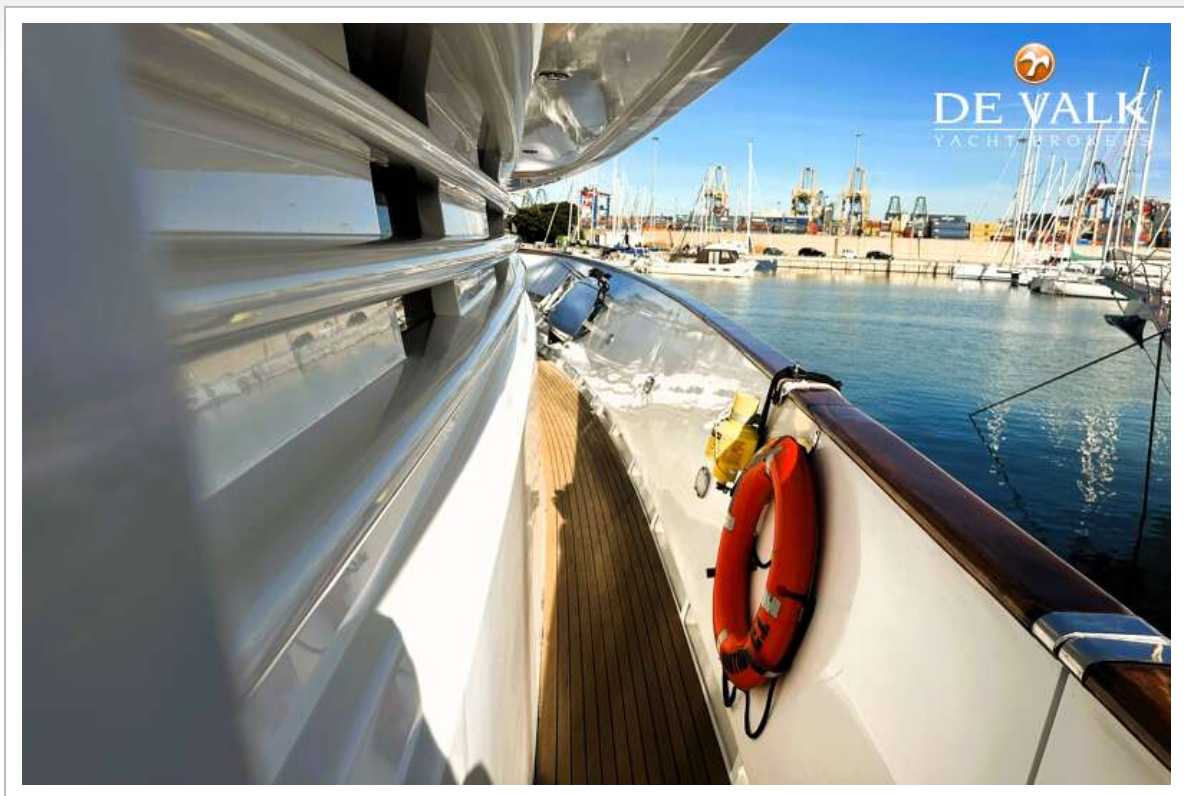
CUSTOM ALUMINIUM CRUISER



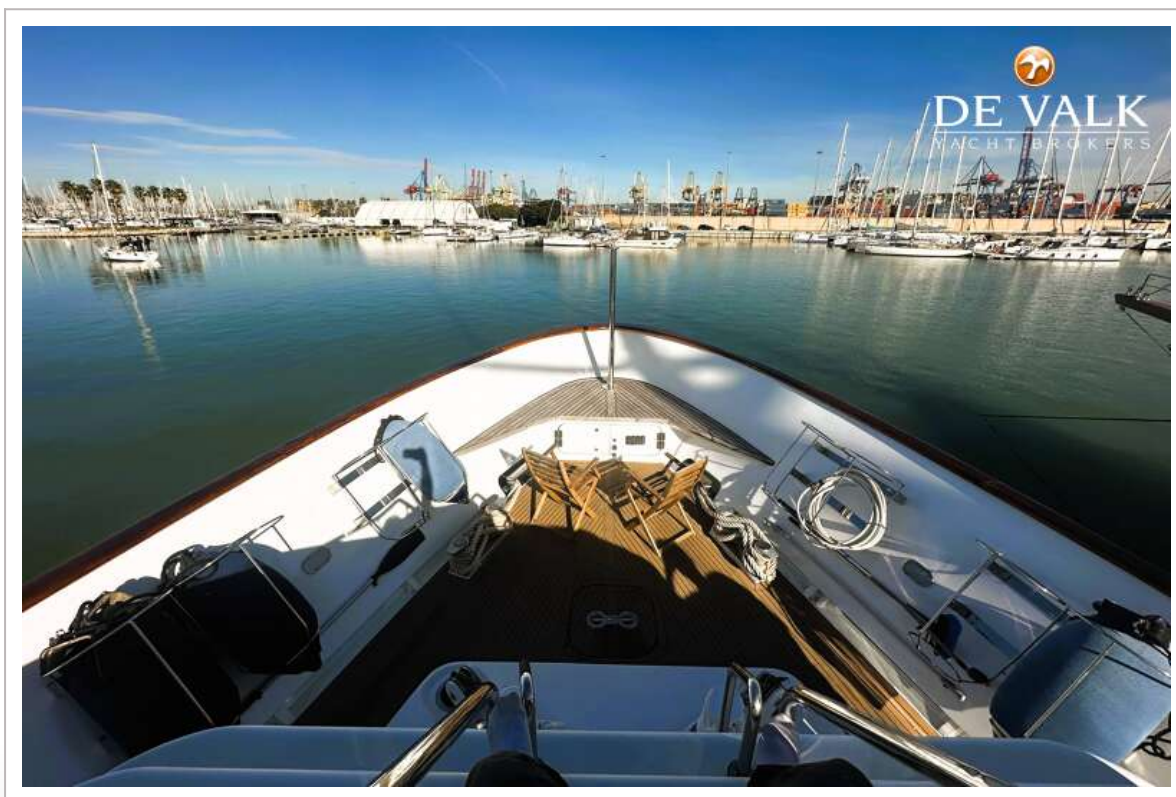
CUSTOM ALUMINIUM CRUISER



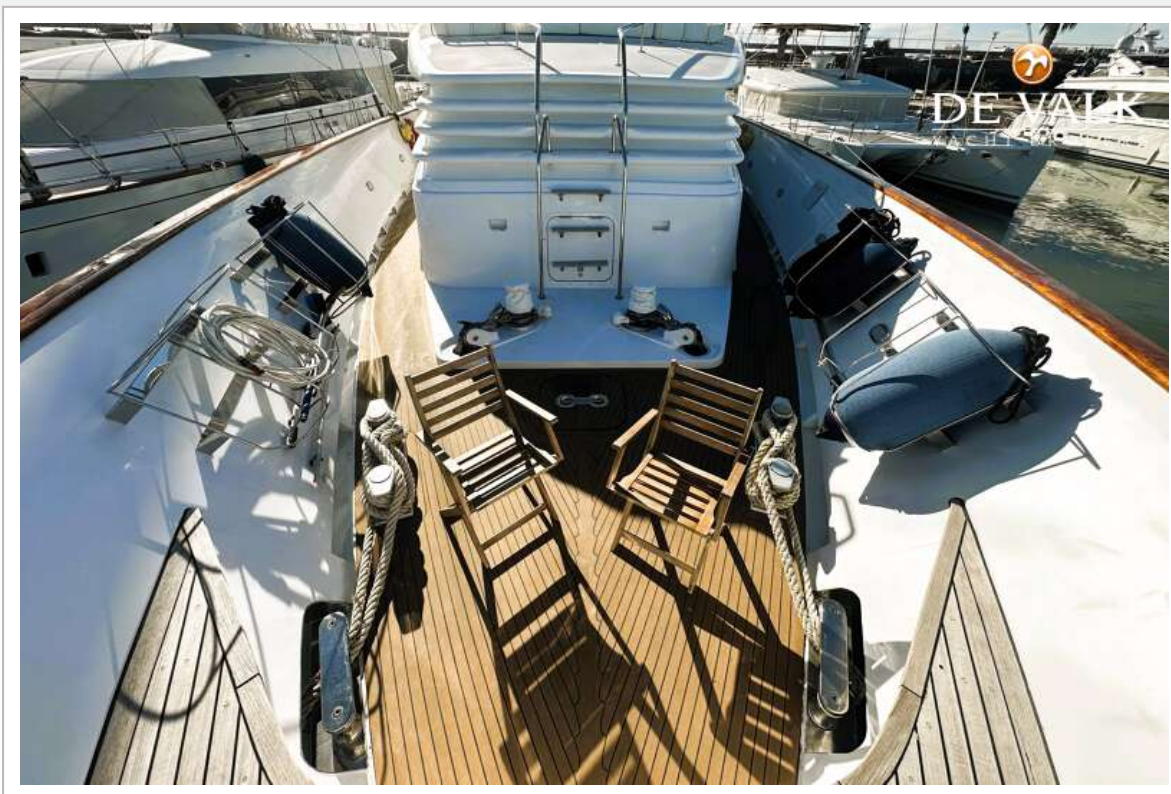
CUSTOM ALUMINIUM CRUISER



CUSTOM ALUMINIUM CRUISER



CUSTOM ALUMINIUM CRUISER



CUSTOM ALUMINIUM CRUISER



CUSTOM ALUMINIUM CRUISER



CUSTOM ALUMINIUM CRUISER



CUSTOM ALUMINIUM CRUISER



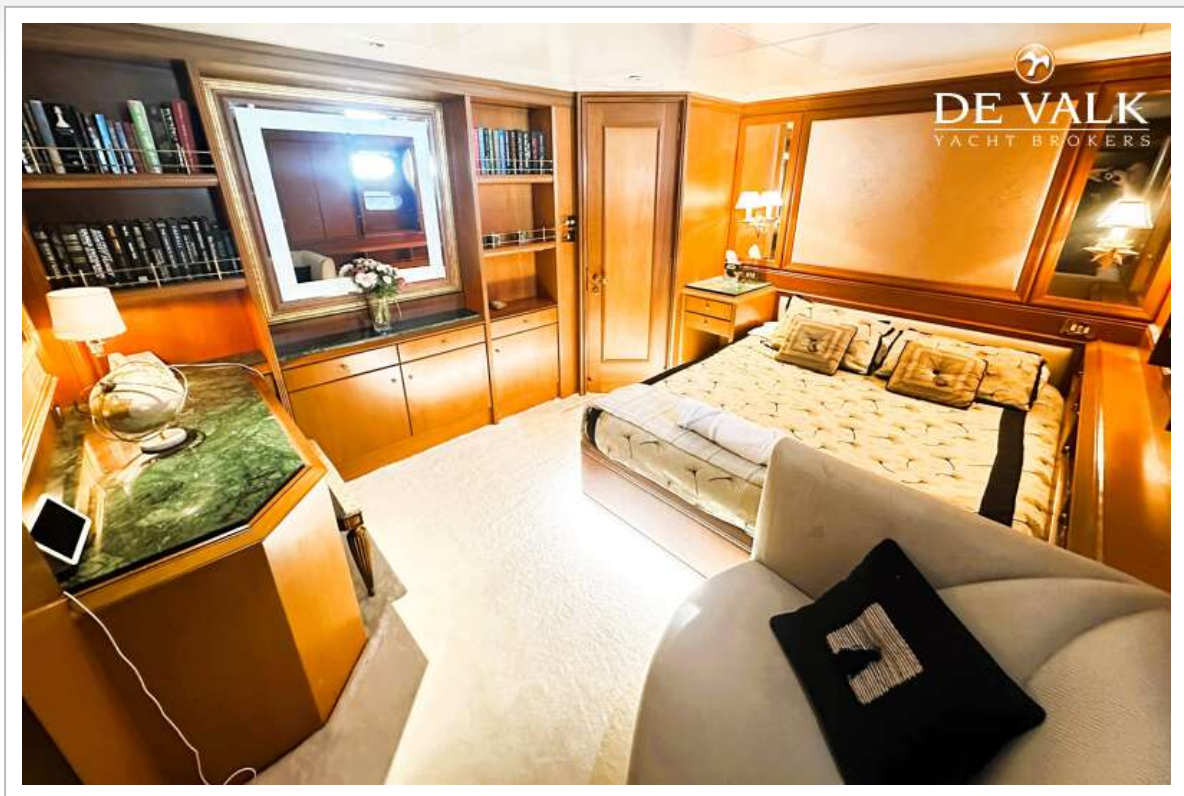
CUSTOM ALUMINIUM CRUISER



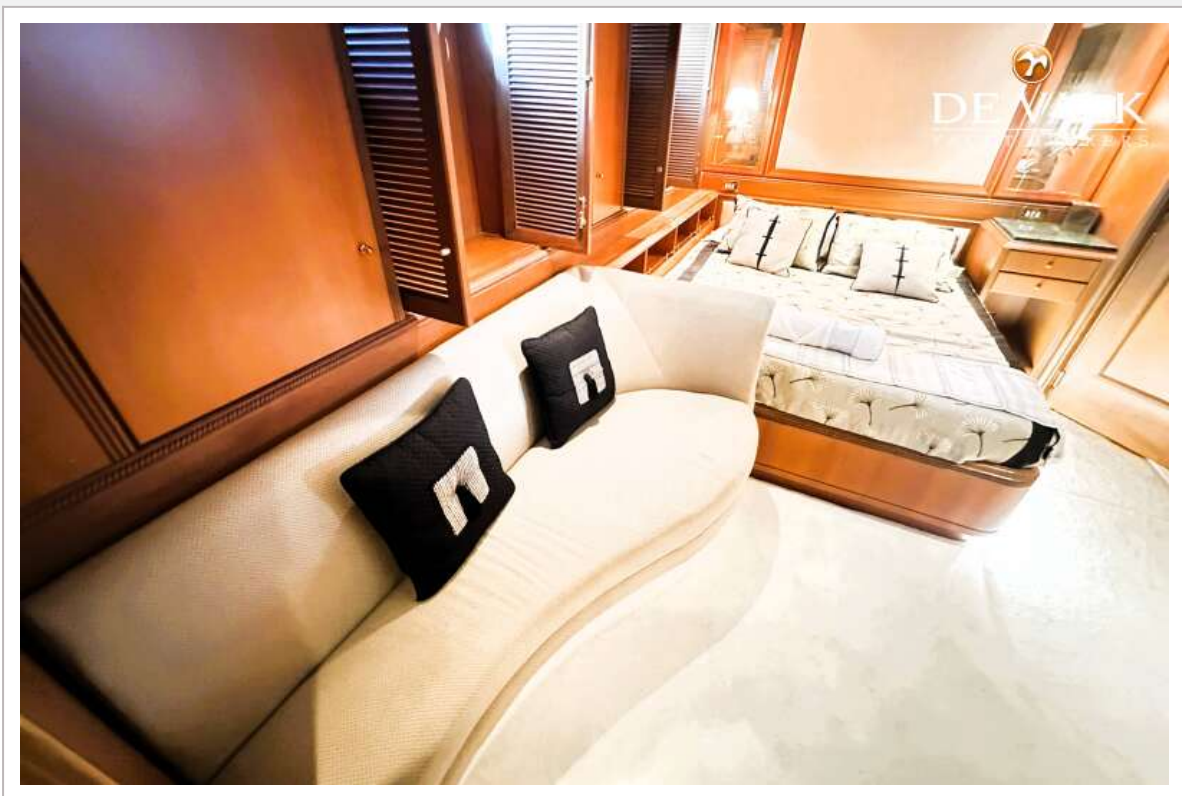
CUSTOM ALUMINIUM CRUISER



CUSTOM ALUMINIUM CRUISER



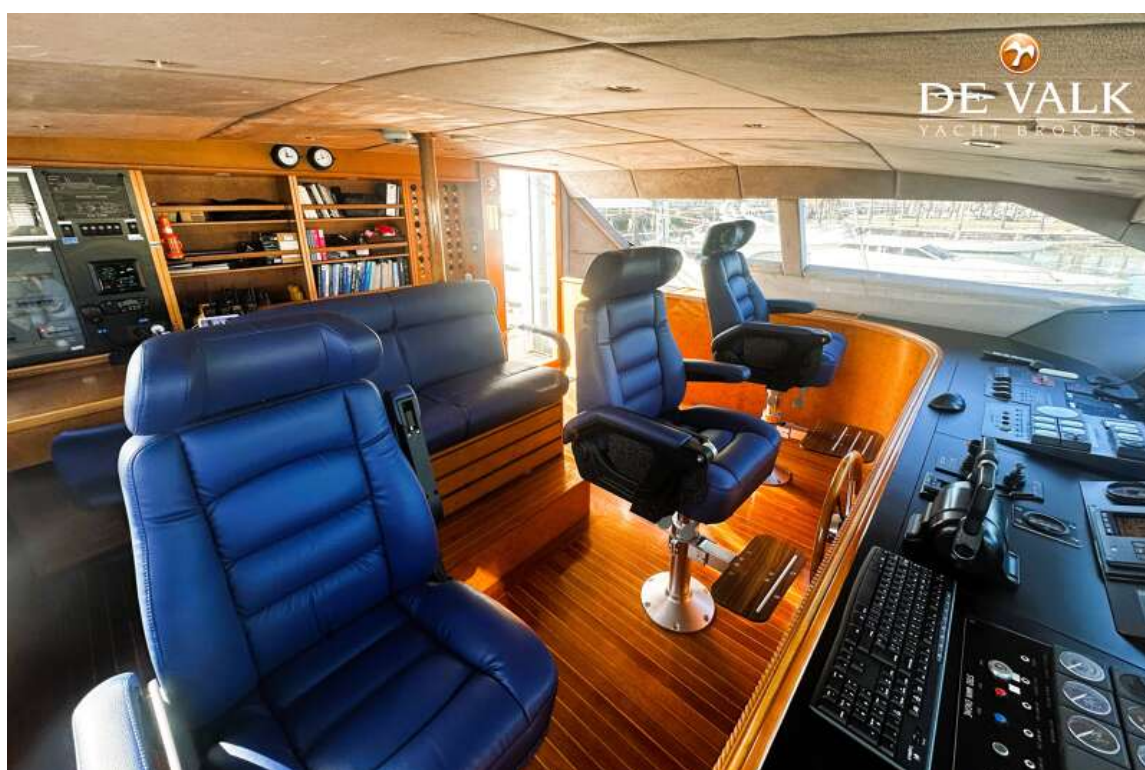
CUSTOM ALUMINIUM CRUISER



CUSTOM ALUMINIUM CRUISER



CUSTOM ALUMINIUM CRUISER



CUSTOM ALUMINIUM CRUISER

