



DE VALK
YACHT BROKERS



OYSTER 53 HP



DE VALK
YACHT BROKERS

OYSTER 53 HP

BROKER'S COMMENTS

Regardless of her age, Oyster Cove, model Oyster 53 HP, hull number 8, built by Western Yacht in 1987 and the yard's flagship at the Lisbon International Expo, is clear and solid proof of an extremely strong, seaworthy, and beautiful design by the legendary yacht design firm Holman & Pye built by one of the best sailboat yard in the world. She has circumnavigated the planet, crossed the Atlantic three times and sailed in higher latitudes without suffering any signs of stress. It looks like she still has the full potential to sail the new owner wherever they wish, why not embark again?

Jörg Hellmich

SPECIFICATIONS

Dimensions	16.15 x 4.80 x 2.24 (m)	Builder	Oyster Marine Ltd
Built	1987	Cabins	3
Material	GRP	Berths	7
Engine(s)	1 x Perkins Sabre M92B diesel	Hp/Kw	80.00 (hp), 58.88 (kw)
Asking price	€ 159.000 (VAT Paid)	Lying	at sales office

CONTACT

Sales office	De Valk Almeria	Telephone	+34 950 497 825
Address	Puerto de Almerimar Darsena de la Batea 1, No. 42, 04711 Almerimar Spain	E-mail	almeria@devalk.nl

DISCLAIMER

These particulars are given in good faith as supplied but cannot be guaranteed.



OYSTER 53 HP

GENERAL

Model	OYSTER 53 HP
Type	sailing yacht
LOA (m)	16,15
LWL (m)	13,62
Beam (m)	4,80
Draft (m)	2,24
Air draft (m)	23,00
Headroom (m)	2,10
Year built	1987
Builder	Oyster Marine Ltd
Country	United Kingdom
Designer	Homann & Pyle
Displacement (t)	18,5
Ballast (tonnes)	cast iron and lead 7,04
Gross tonnage	27,78
CE norm	NA
Hull material	GRP
Hull colour	white
Hull shape	deep-V
Keel type	fin keel Encapsulated
Superstructure material	GRP
Rubbing strake	stainless steel
Deck material	GRP With balsa core
Deck finish	teak Epoxy saturated (ready for grip deck paints or alternatives)
Superstructure deck finish	teak
Cockpit deck finish	teak
Dorades	yes
Window frame	aluminium
Window material	tempered glass 8mm smoked
Deckhatch	Lewmar



OYSTER 53 HP

Portholes	stainless steel Lewmar
Insulation	yes
Fuel tank (litre)	GRP 795
Level indicator (fuel tank)	Gauge
Freshwater tank (litre)	GRP 1420 (in 2 tanks)
Level indicator (freshwater)	Gauge
Blackwater tank (litre)	polyethylene 100
Blackwater tank extraction	deck extraction + pump 2 tanks (aft needs connecting)
Greywater tank (litre)	GRP At the galley
Wheel steering	cable steering Edson (overhaul in 2009 with new cables)
Emergency tiller	yes
Extra info	Epoxy Preventive Treatment for osmosis in 2003
Extra info	See additional owner comments for the teak deck

ACCOMMODATION

Cabins	3
Berths	7
Interior	teak
Layout	3 cabins
Floor	wood
Aft deck	yes
Deck saloon	yes
Headroom saloon (m)	2,10
Air-conditioning	reverse cycle airco 2 x Cruisair 16,000 smx (new 1996)
Chart table	yes
Aft Cabin	yes
Convertible berth	In saloon
Galley	Long shape
Countertop	corian Light blue formica
Sink	stainless steel Double
Cooker	calor gas Force 10 3-burner (1999)



OYSTER 53 HP

Oven	Force 10
Extractor	12V
Microwave	Whirlpool Cook20
Fridge	Freedom toploader (120V) with 2 compressors
Freezer	Freedom (120V)
Hot water system	220V + engine Boiler (120V)
Water pressure system	electrical Jabsco
Hot water tap	yes
Crockery	yes
Owners cabin	twin single Aft
Bed length (m)	2,00
Wardrobe	hanging/drawers/shelves With dressing table / mirror
Bathroom	en suite
Toilet	en suite
Toilet system	manual Jabsco (2000)
Wash basin	at the toilet
Shower	en suite
Guest cabin 1	v-bed FW
Bed length (m)	2,00
Wardrobe	hanging and drawers Incl. dressing table / mirror
Toilet	shared
Toilet system	manual Jabsco
Wash basin	at the toilet
Shower	shared
Guest cabin 2	twin single Midships STB
Bed length (m)	2,00
Wardrobe	hanging and shelves
Washing machine/dryer combi	Bendix
Extra info	All lights in LED (2022)

MACHINERY



OYSTER 53 HP

No of engines	1
Make	Perkins
Type	Sabre M92B
HP	80
kW	58.88
Fuel	diesel
Year installed	2009
Maximum speed (kn)	10
Cruising speed (kn)	8 (2.100 rpm)
Consumption (l/hr)	5
Range (nm)	1900
Engine hours	950
Engine cooling system	freshwater heat exchanger
Drive	shaft
Shaft seal	yes
Engine controls	bowden cable
Gearbox	hydraulic
Bowthruster	electric Vetus 7 HP (24V) (2009)
Exhaust	watercooled
Propeller type	folding Maxprop (2008)
Propeller blades	3
Propeller shaft material	stainless steel
Shaft lubrication	water
Manual bilge pump	Whale
Electric bilge pump	2 units
Electrical installation	12 / 24V system
Generator	wet exhaust Mase - 8kW (2009)
Running hours generator	900
Batteries	8 x 6V RollAVG (10.2022)
Battery monitor	Victron BMV-702 (2008)
Battery charger	Sterling Pro Charger Ultra 24V / 30A (2017)
Inverter	Pure Sine Waver 24V / 2000W



OYSTER 53 HP

Shorepower	with cable 230V & 120V
Insulation transformer	Victron Energy
Watermaker	SK Engineering Aqua Master 1895L. per day (new 1996)
Extra info	110V system (plugs)
Extra info	24V Alternator
Extra info	Wiring checked 2009

NAVIGATION

Compass	Plastimo
Depth sounder/log	B&G with repeater
Windset	B&G Wind with repeater
VHF	Std Horizon GX3000E (2009)
VHF handheld	Plastimo SX-400
Autopilot	Raymarine ST6000 SmartPilot (electric drive unit)
Rudder angle indicator	Raymarine ST6000
GPS	Furuno GP 32
Radar/GPS/plotter	Raymarine Axiom 9" (to replace radar dome)
Navtex	Clipper Navtex (2010)
AIS transceiver	Raymarine Axiom 9"
EPIRB	Fast Find 406nhz (2010)
Navigation lights	yes

EQUIPMENT

Sprayhood	Quantum (New 2009)
Bimini	Quantum (new 2009)
Window cover	Internal
Cockpit table	yes
Boarding ladder	yes
Anchor	CQR Plough 34 kg
Anchor chain	60m (needs changing)
Anchor 2	Delta Lewmar 25Kg



OYSTER 53 HP

Windlass	electrical Lighthouse Horizontal
Deck wash	yes
Outboard	Suzuki 2,5
Davits	stainless steel Simpson 6a
Davits controls	manual (change of steel wires recommended)
Sea railing	wire
Grab rail (superstructure)	teak
Railing side opening gates	yes
Pushpit	yes
Pulpit	yes
Life raft	container Saego Raft-G-6 (2009)
Life raft (pers)	6
Last life raft survey	2021
Lifejackets	Secumar / Helly Hansen 150
Lifebuoy	Lifering Jim-Bouy
Radar reflector	yes
Fenders	yes
Mooring lines	yes
Spare parts	yes
Tools	yes
TV	Panasonic
Radio	Pioneer (bluetooth)
Sub-woofer	Portable
Cockpit speakers	yes
Speakers in salon	yes
Clock - barometer	yes
Fire extinguisher	yes

RIGGING

Rigging	sloop-cutter
Standing rigging	wire New 2009 (upgraded to 12mm)



OYSTER 53 HP

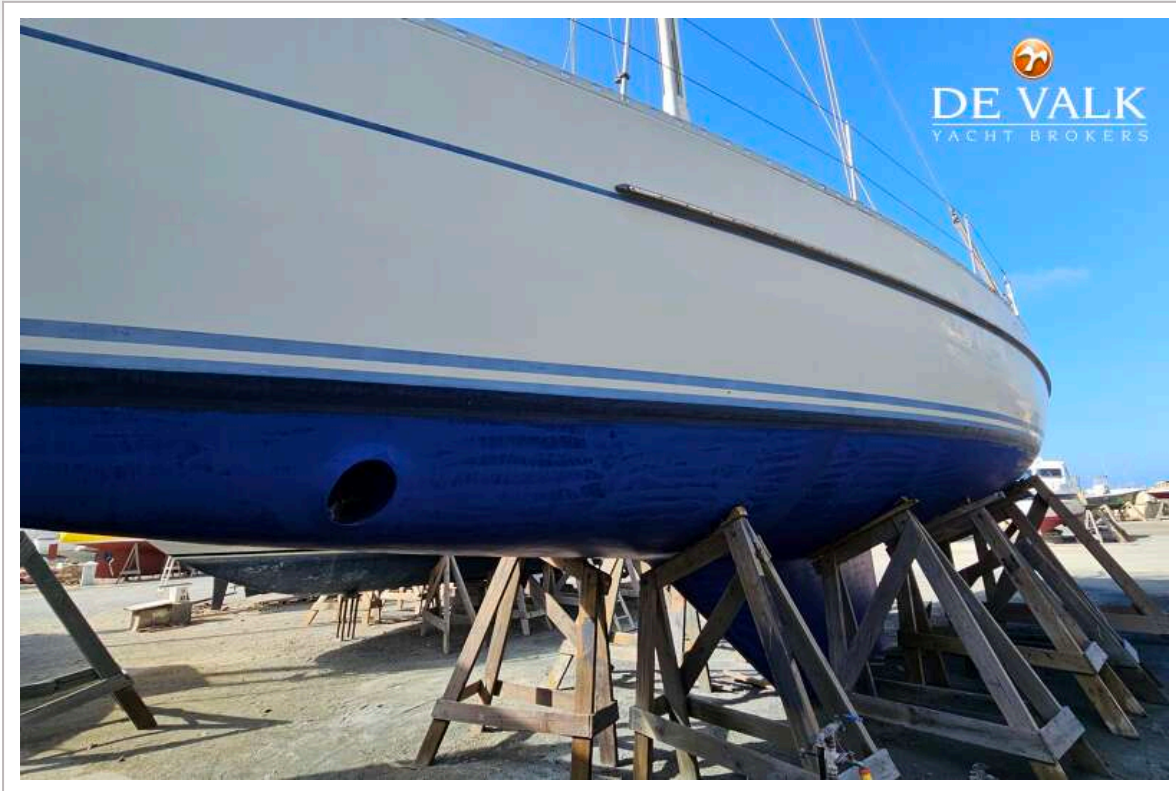
Brand mast	Z-Spar
Material mast	aluminium coated
Spreaders	Double
Keel stepped mast	yes
Mainsail	North Sails Dracon (2009)
Battcars	Stowage tracks x 2
Genoa	North Sails Dracon (2009)
Genoa furler	Profurl (24V - Electric)
Spinnaker	Quantum (light usage)
A-symmetric spi	yes
Staysail	North Sails Dracon (2009)
Staysail furler	Profurl
Reefing System	main in-mast furling Hood Stoway 24V Electric drive (2009)
Backstay adjuster	hydraulic Seaway
Boomvang	mechanical and tackle With preventer
Primary sheet winch	2 x Lewmar 65" ST 2SP
Secondary sheet winch	3 x Lewmar 52" ST 2SP
Genoa sheetwinches	1 x Lewmar 46" ST EST (electric)
Halyard winches	1 x Lewmar 46" 2SP
Spinnaker winch	2 x Lewmar 16" ST - Traveller
Reefing winch	1 x Lewmar 43" 2SP
Multifunctional winches	1 x Lewmar 46" ST EST (electric)
Spi-pole	aluminium On mast
Extra info	Preventer



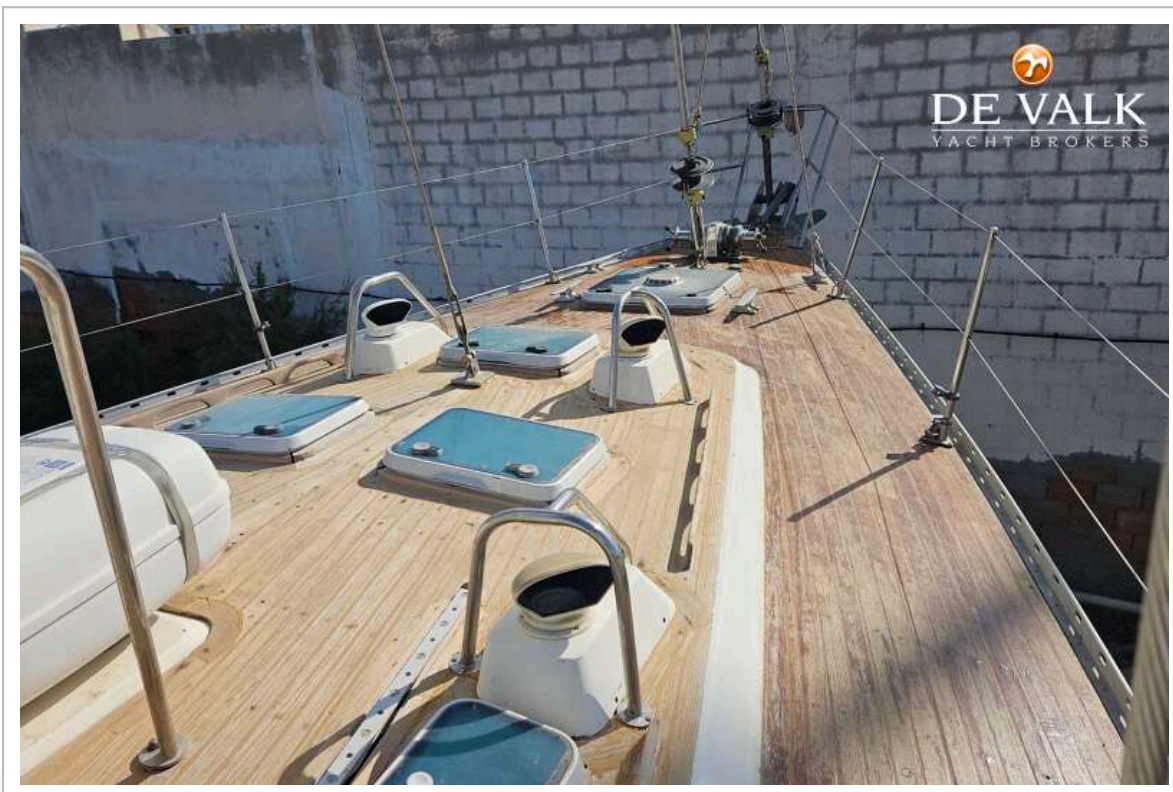
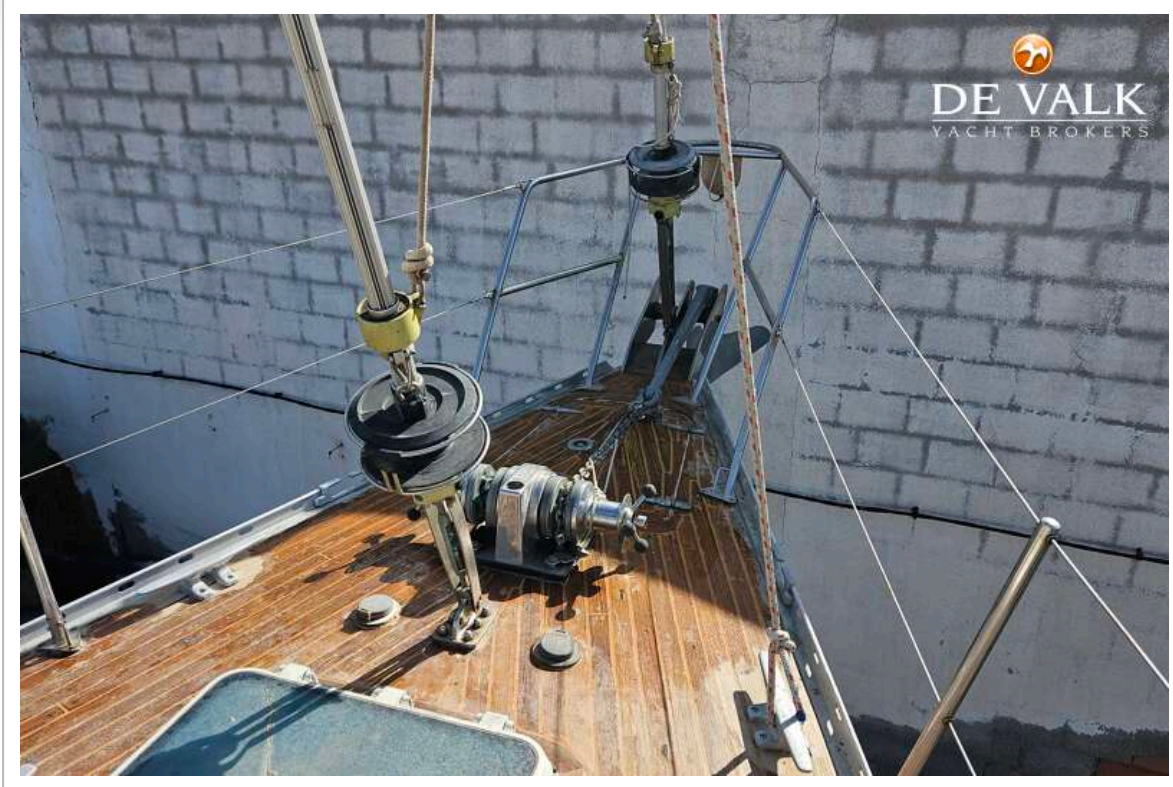
OYSTER 53 HP



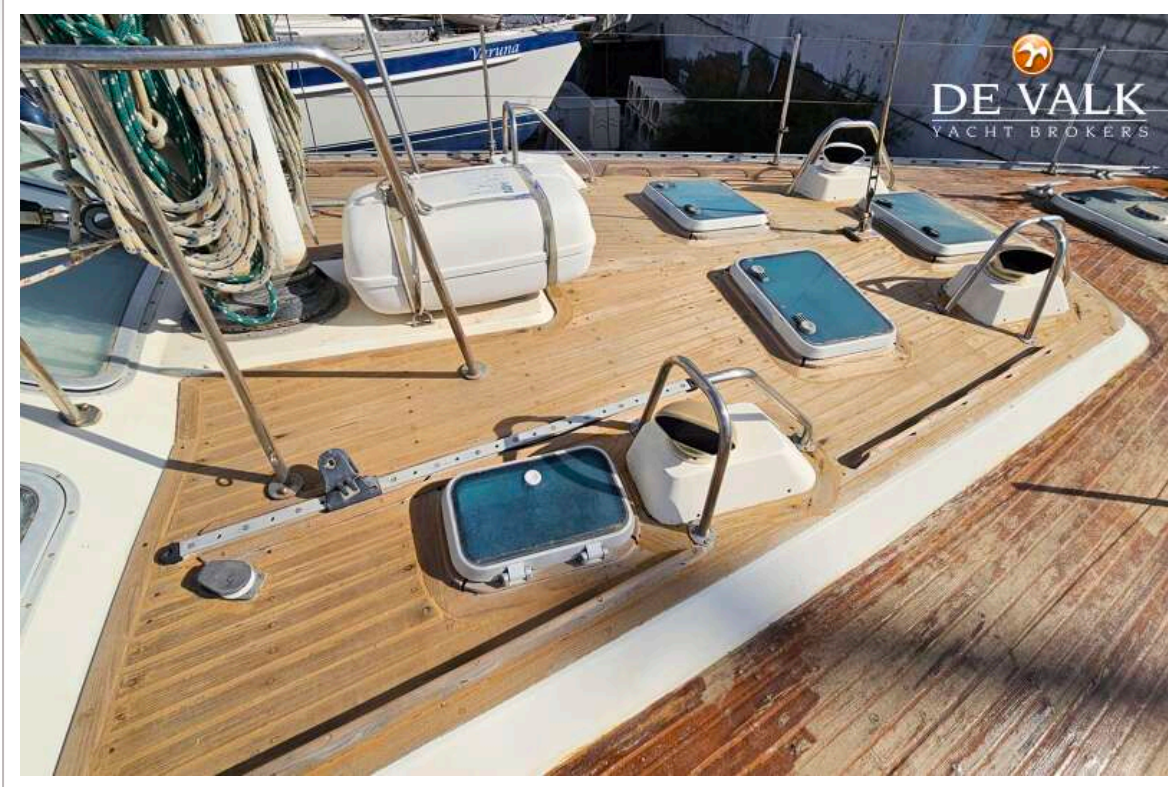
OYSTER 53 HP



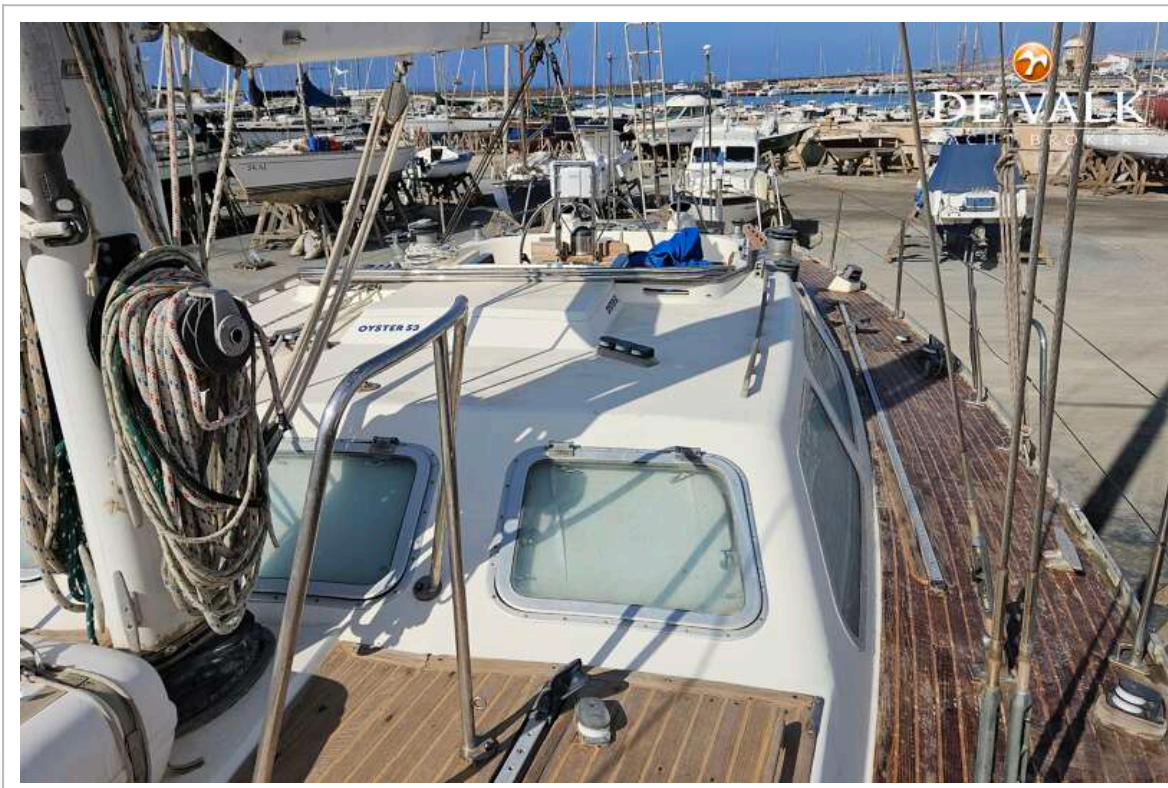
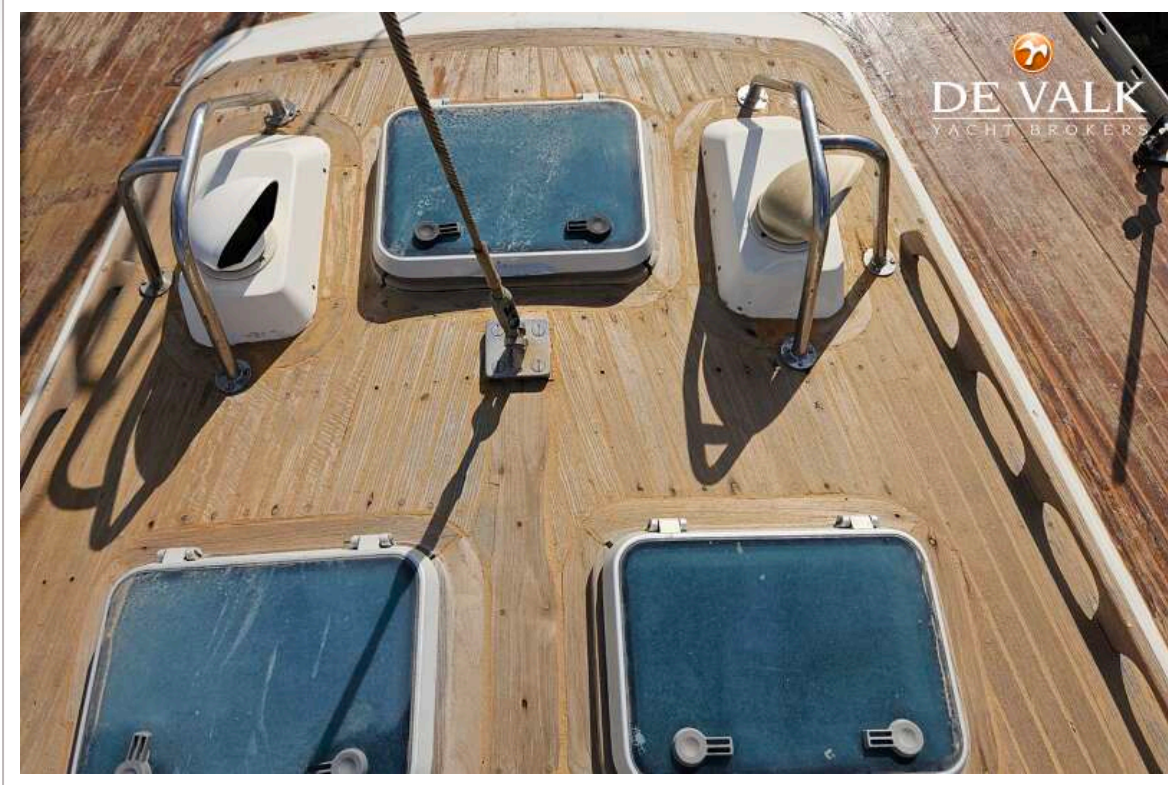
OYSTER 53 HP



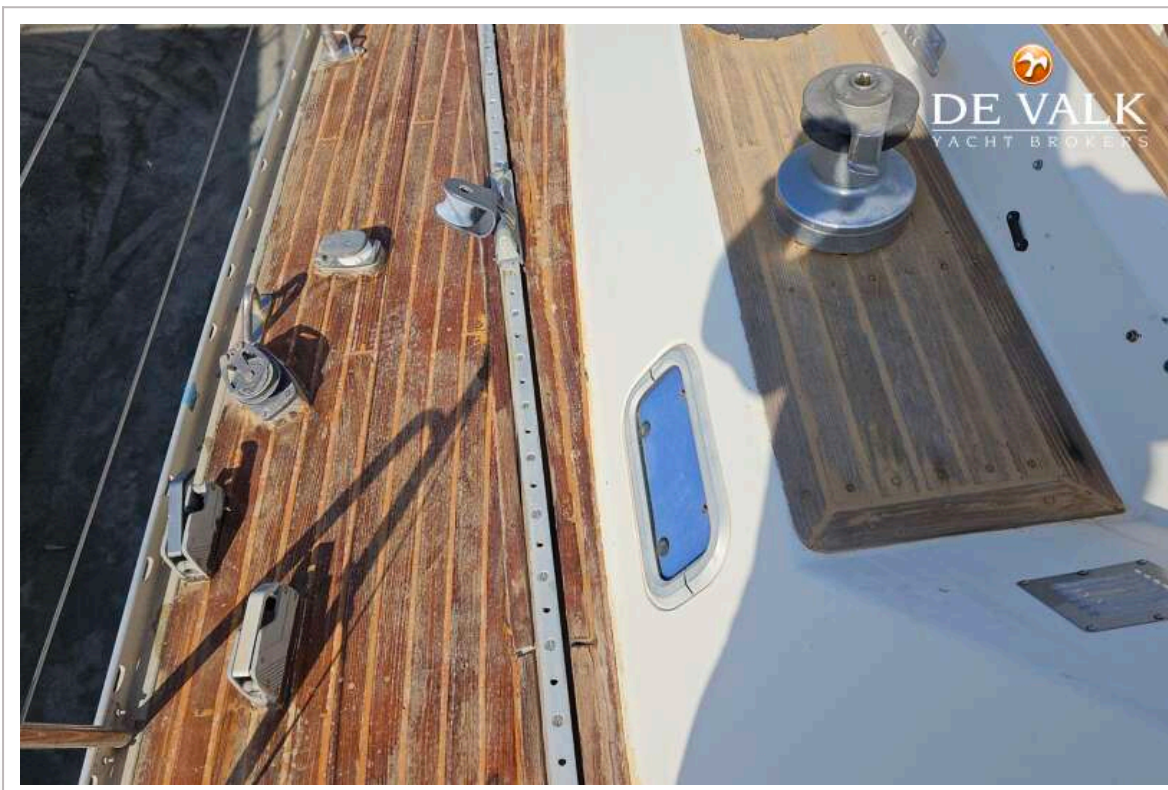
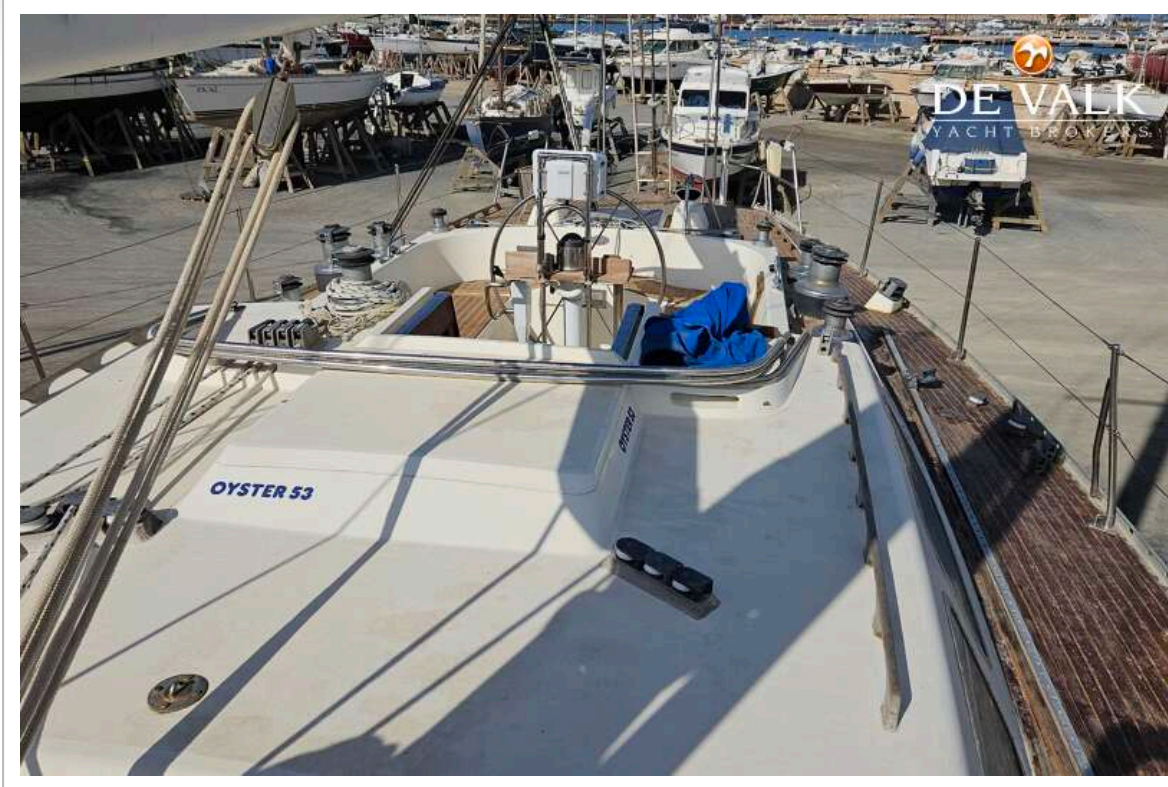
OYSTER 53 HP



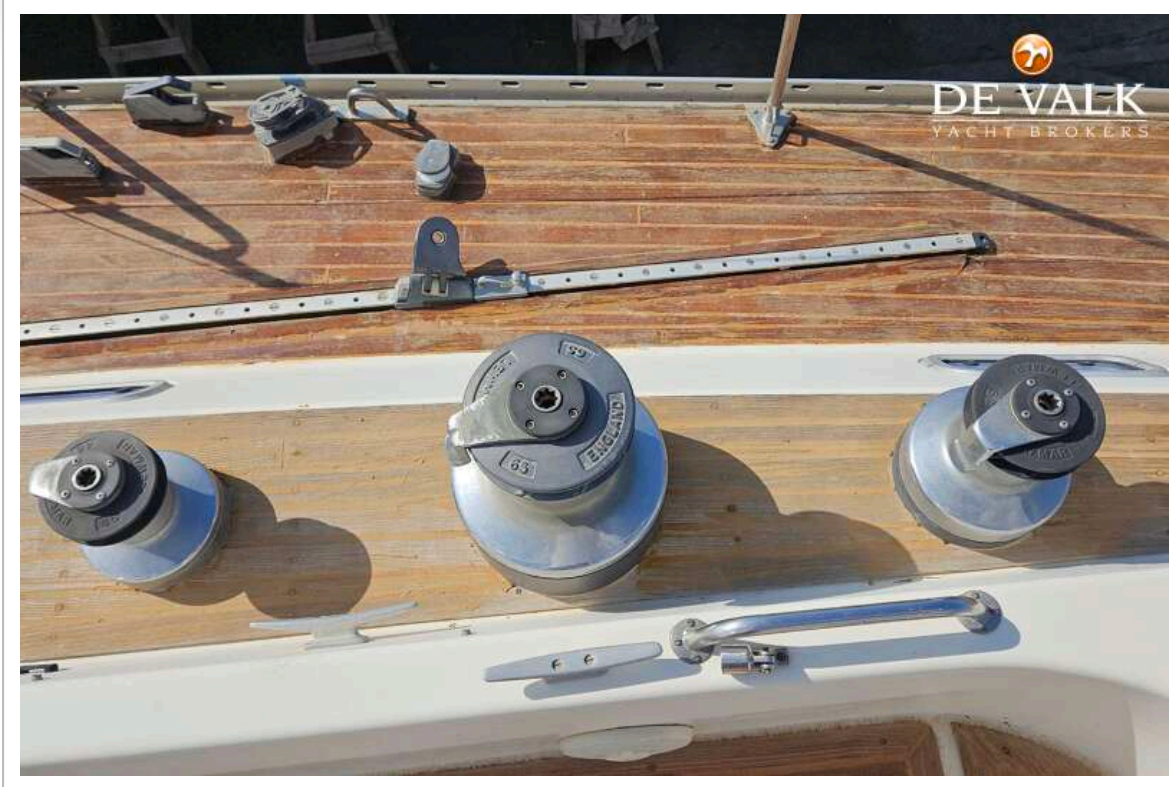
OYSTER 53 HP



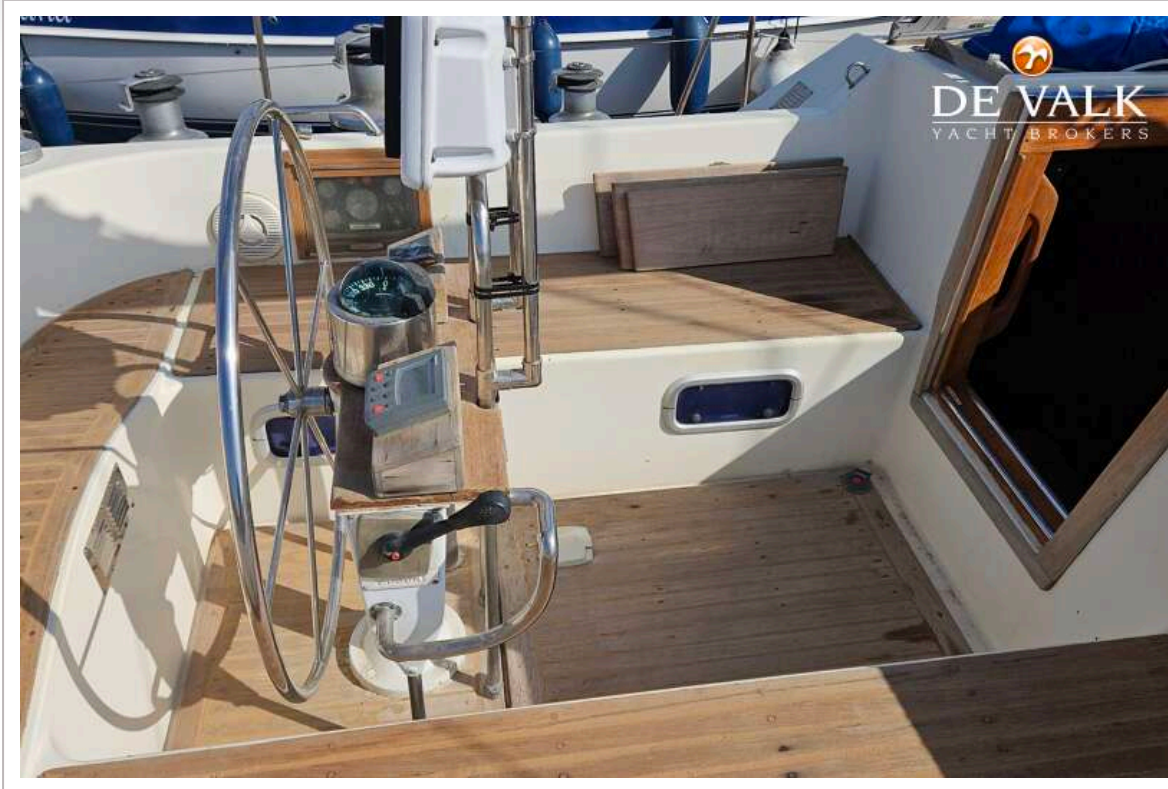
OYSTER 53 HP



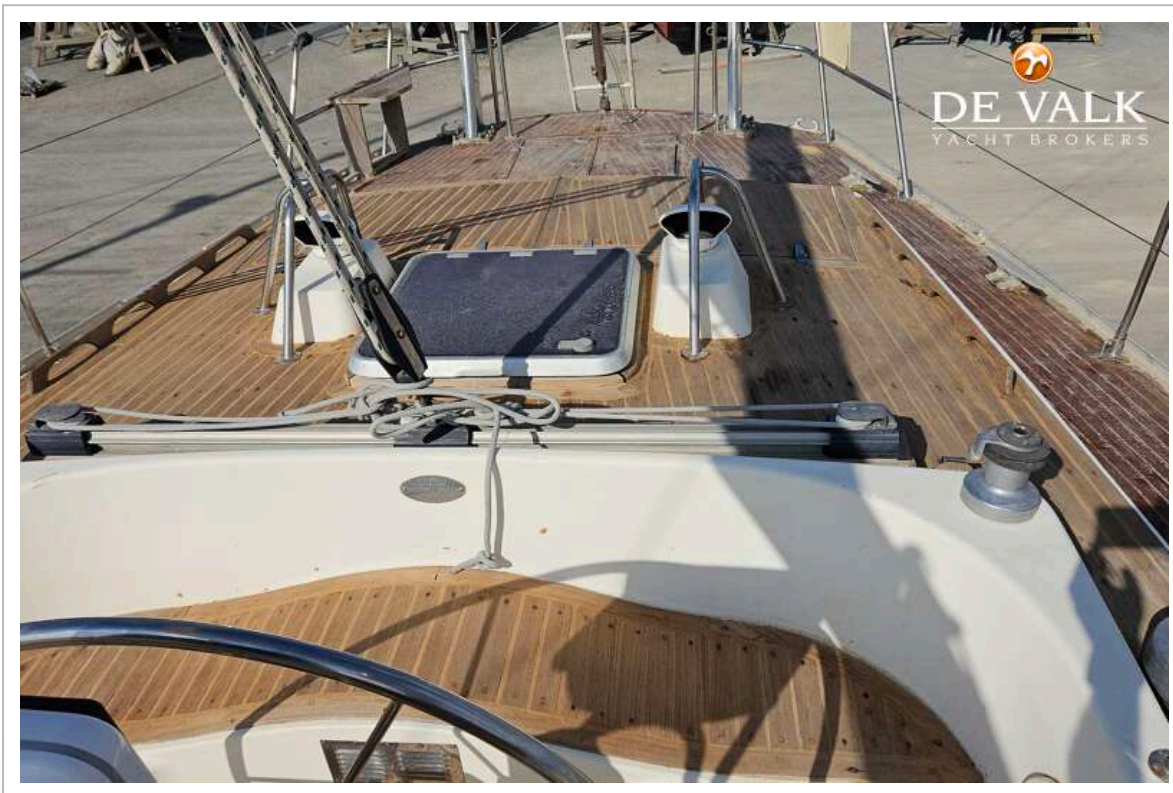
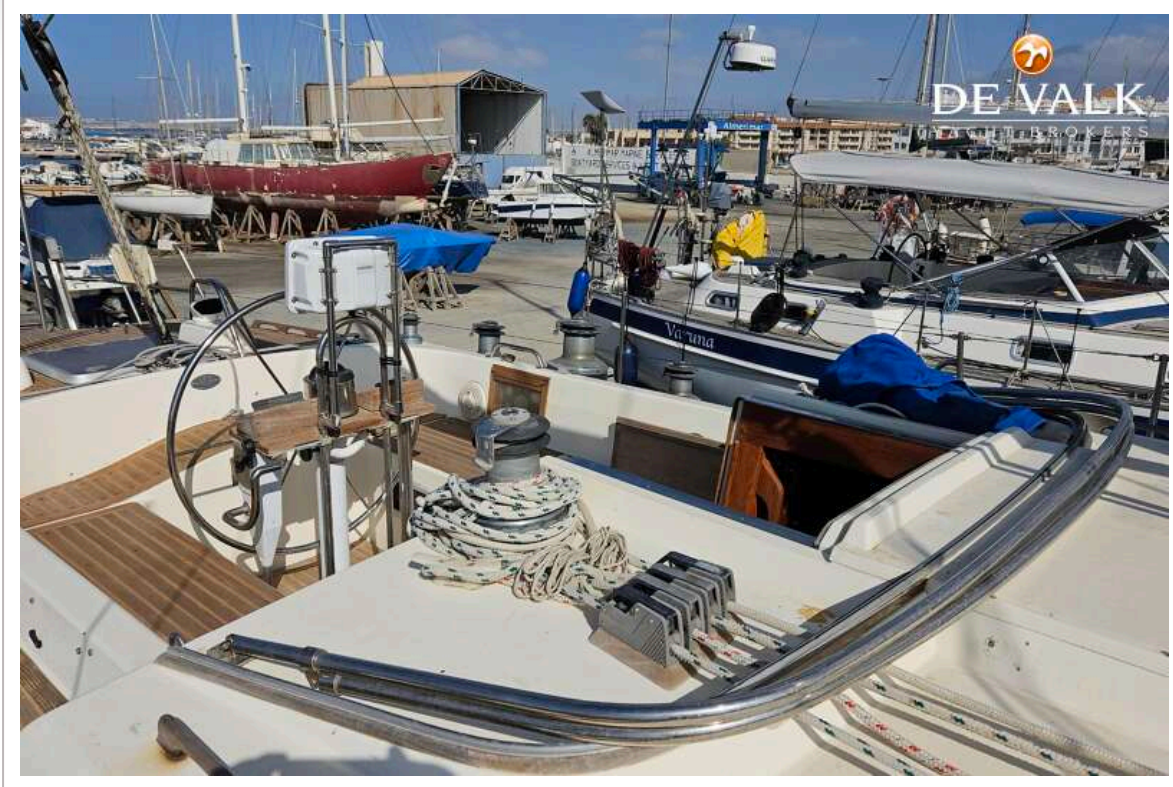
OYSTER 53 HP



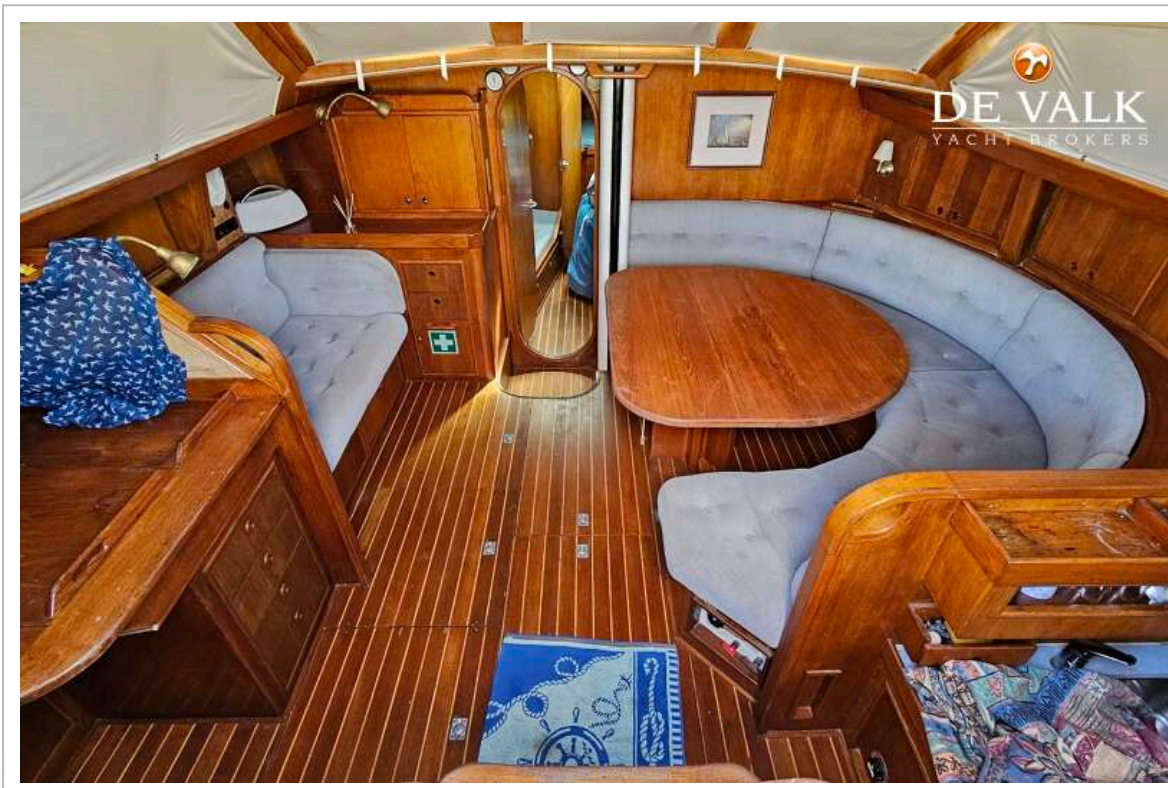
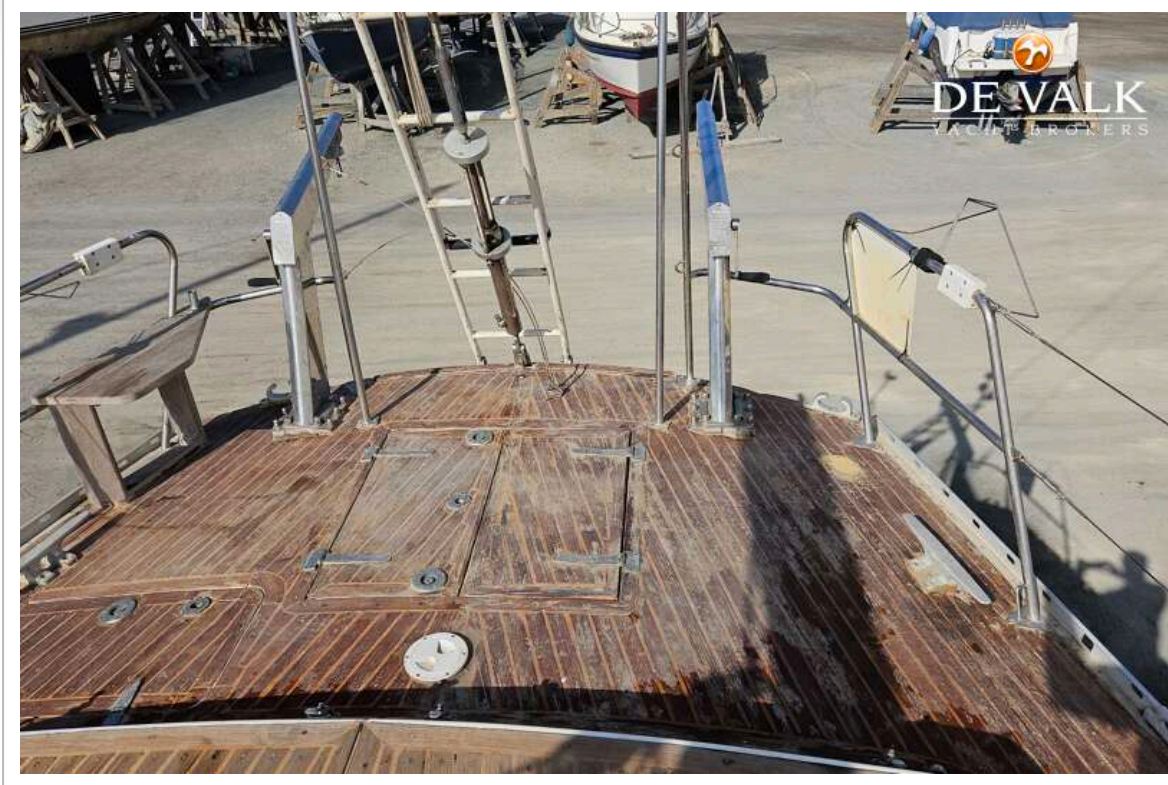
OYSTER 53 HP



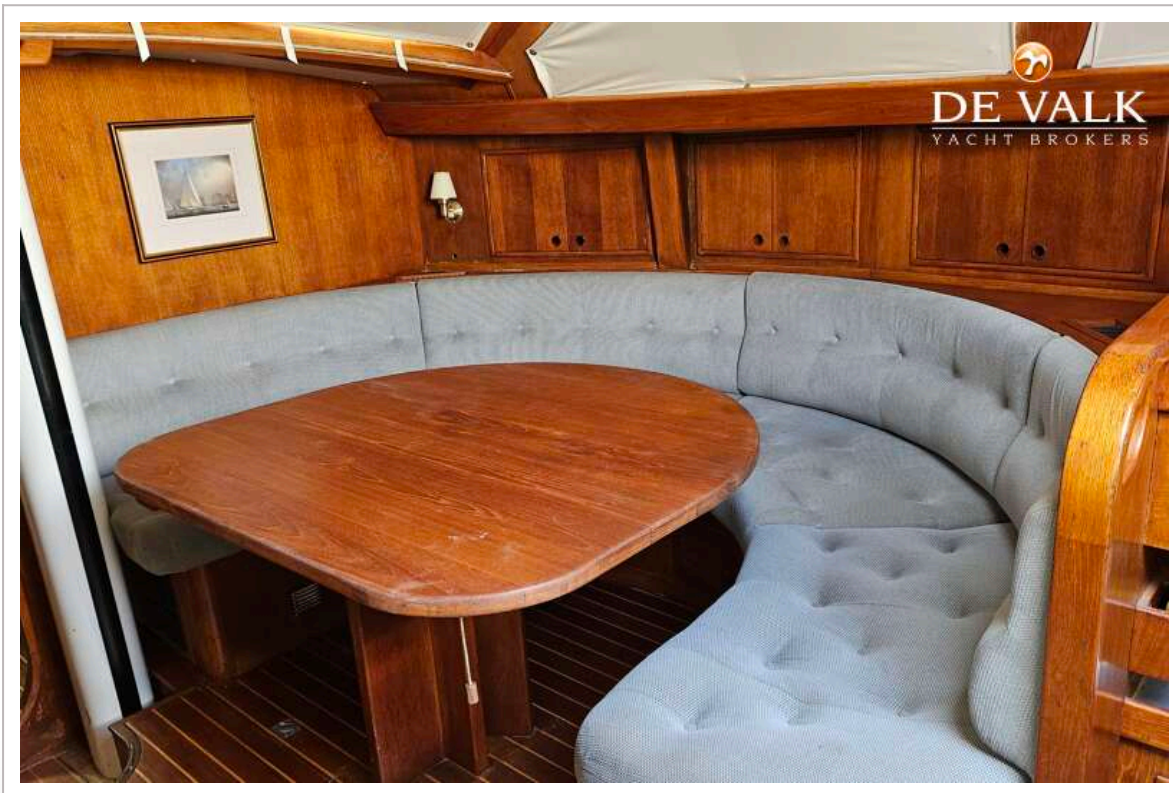
OYSTER 53 HP



OYSTER 53 HP



OYSTER 53 HP



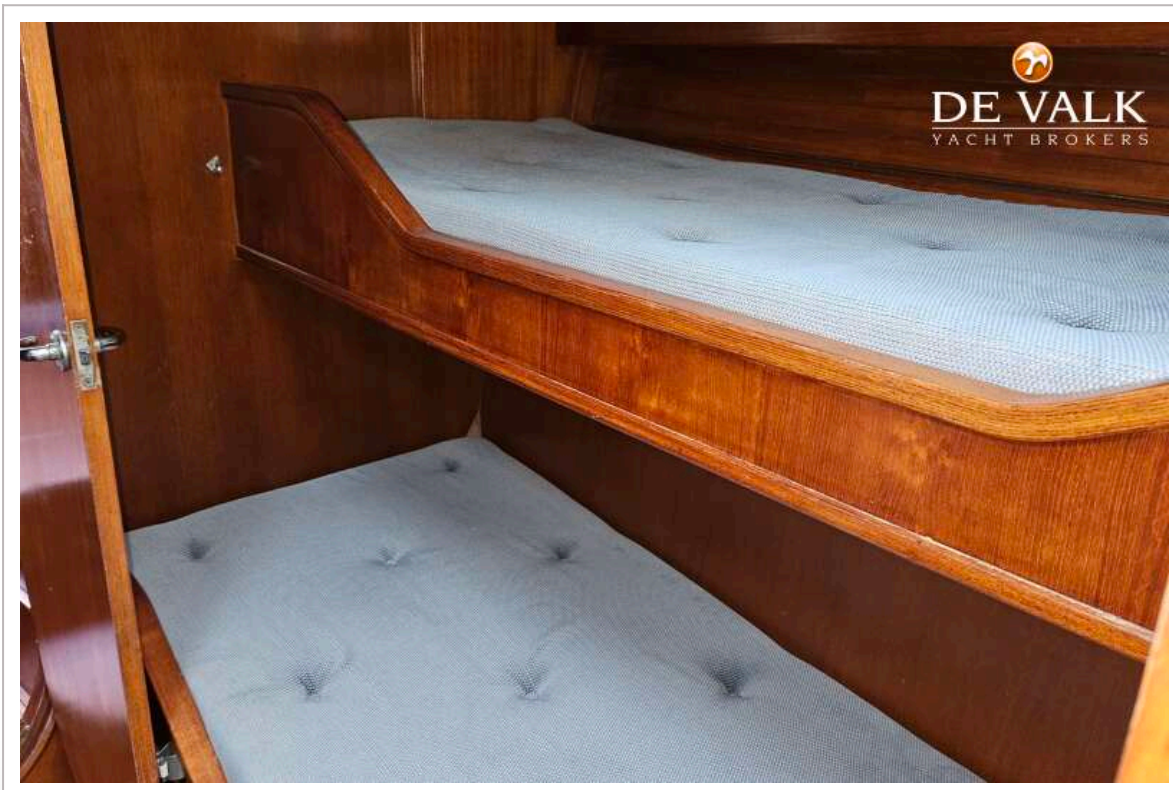
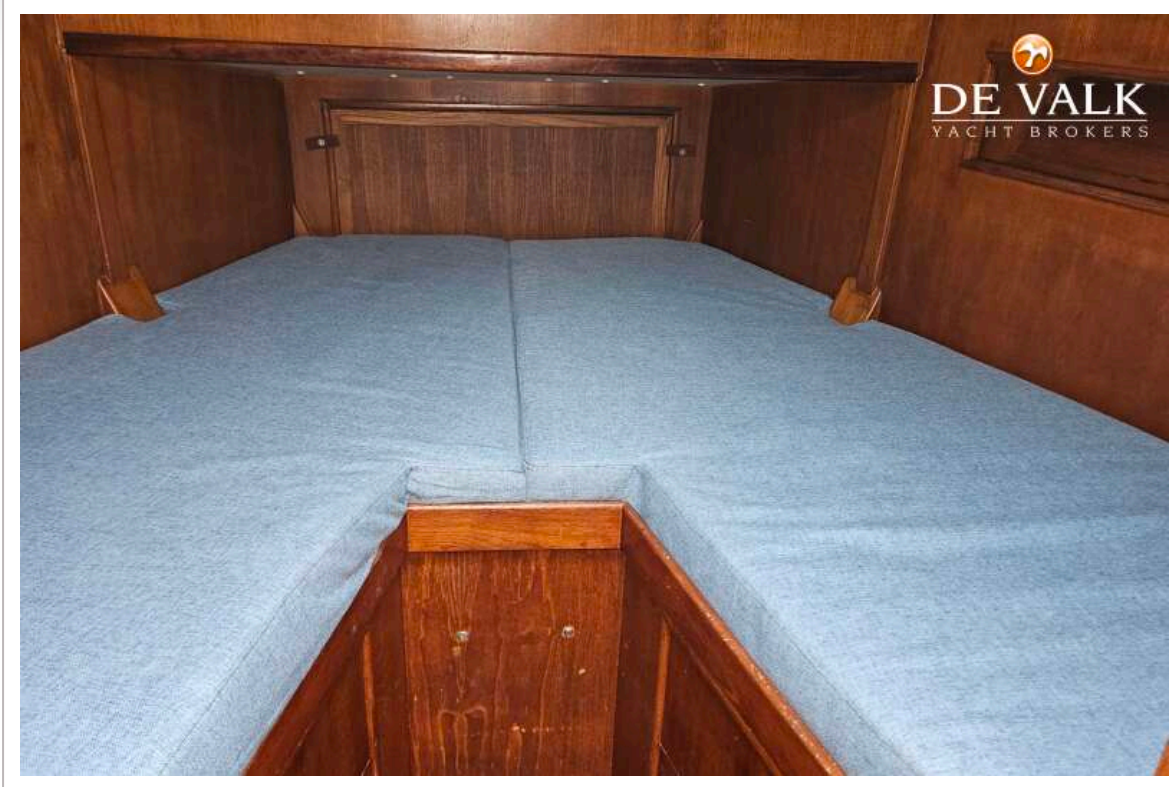
OYSTER 53 HP



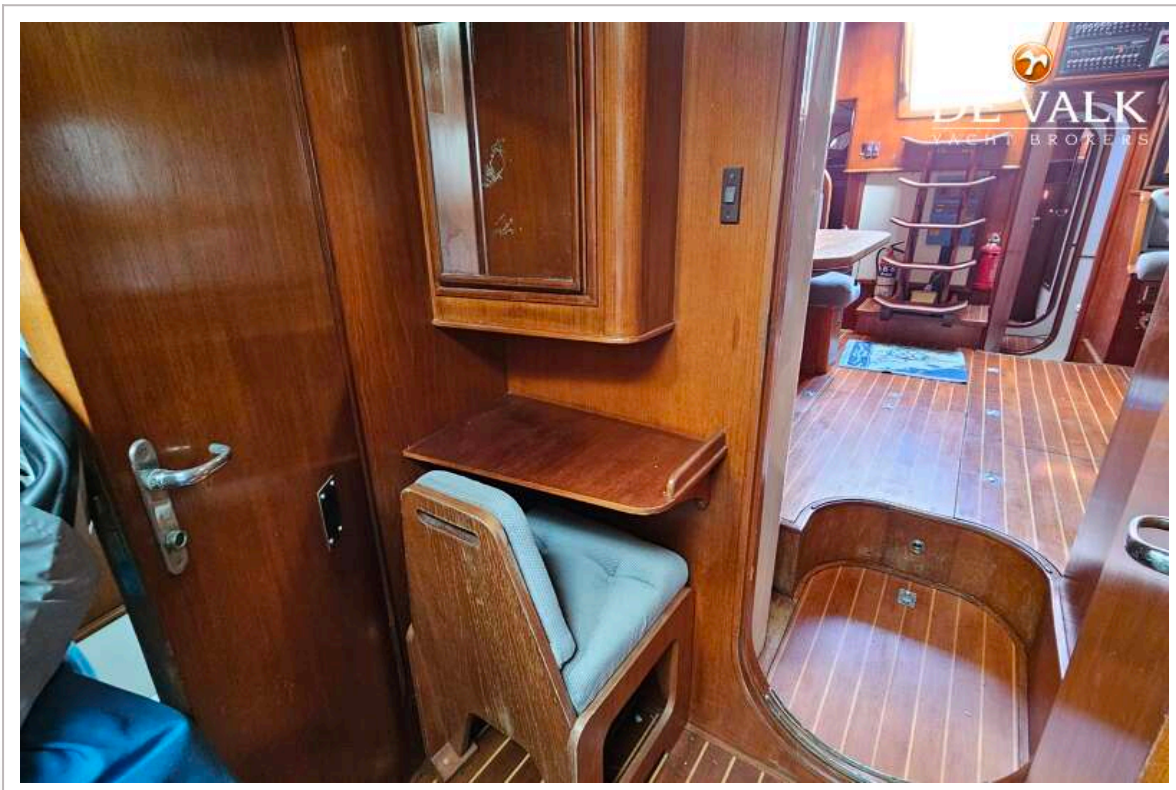
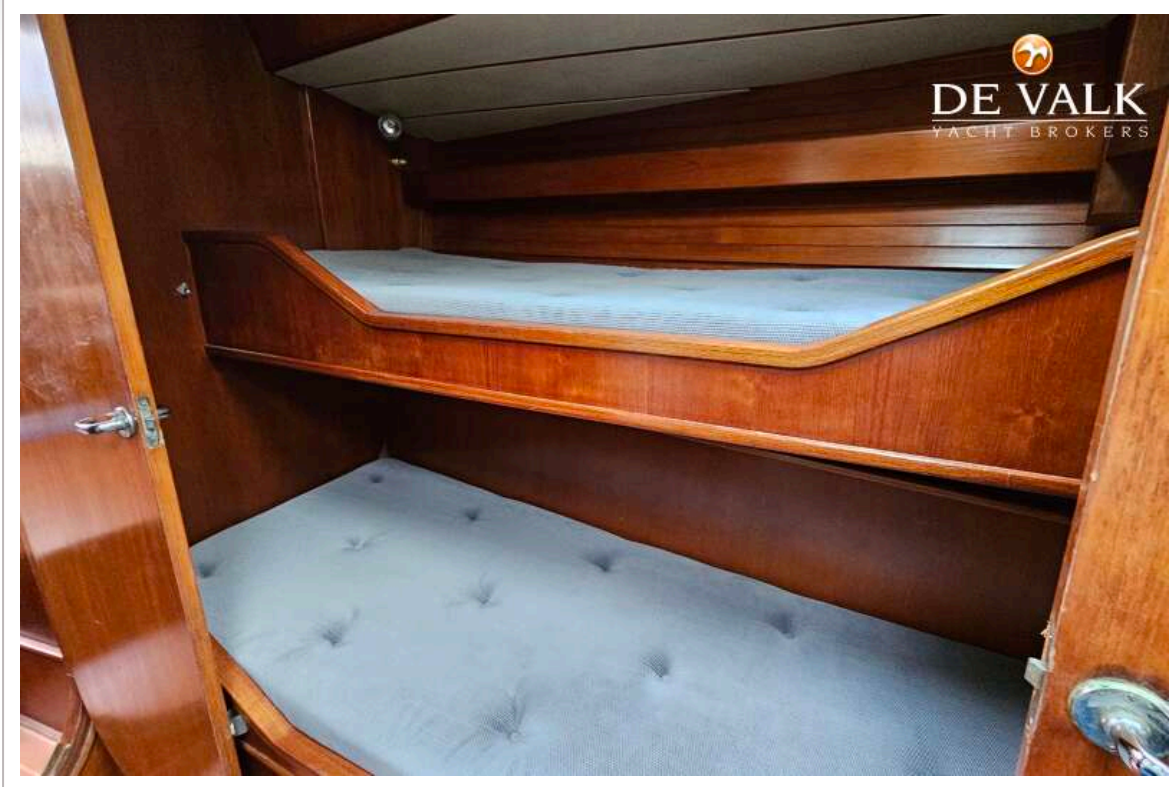
OYSTER 53 HP



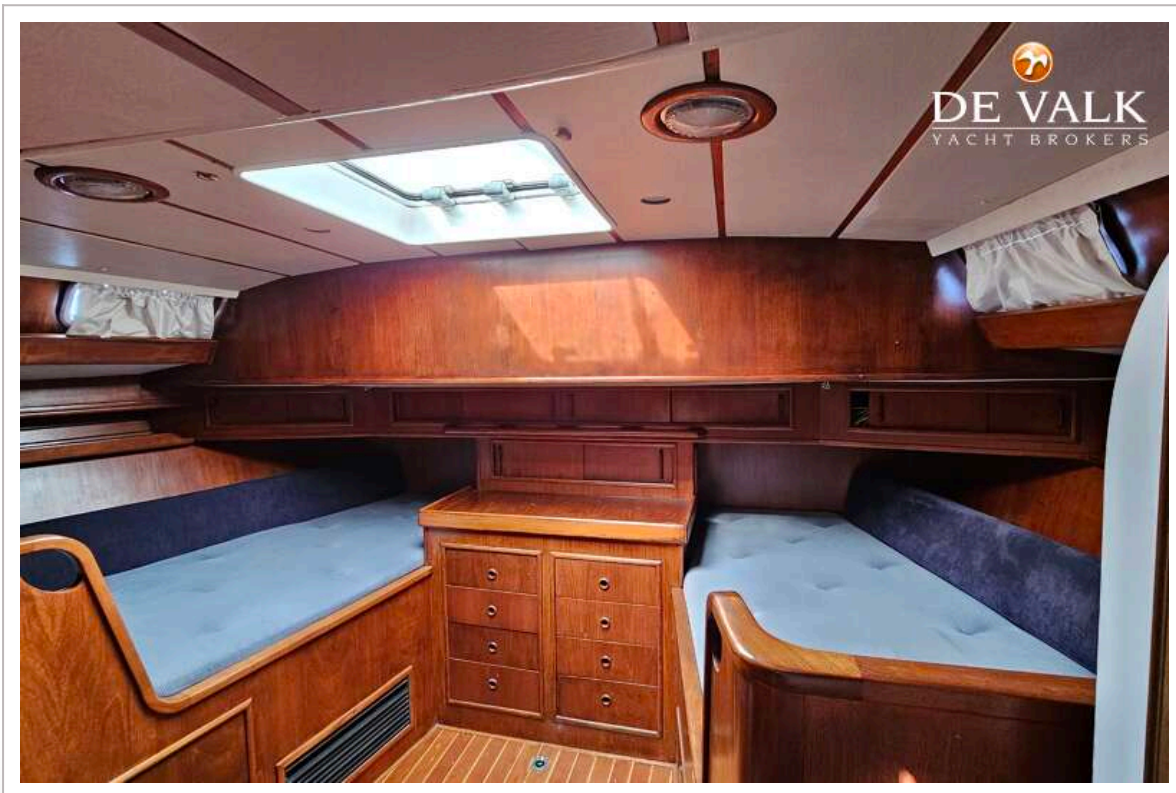
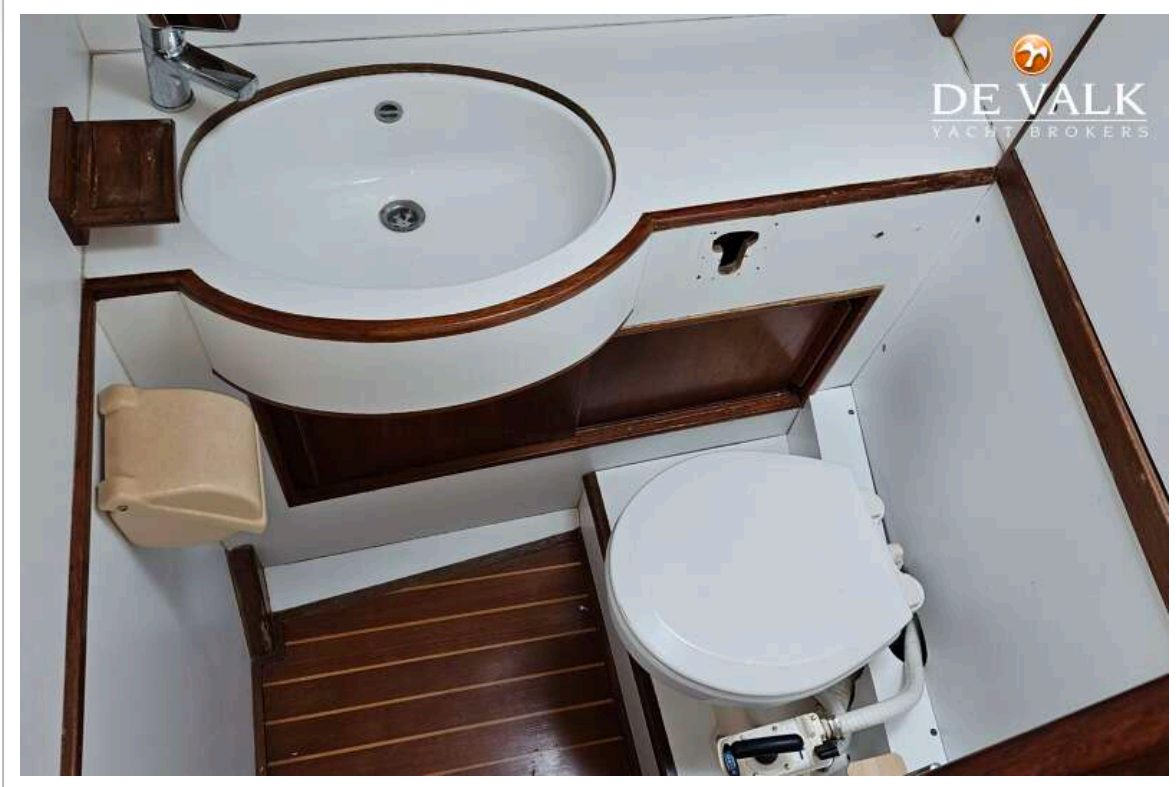
OYSTER 53 HP



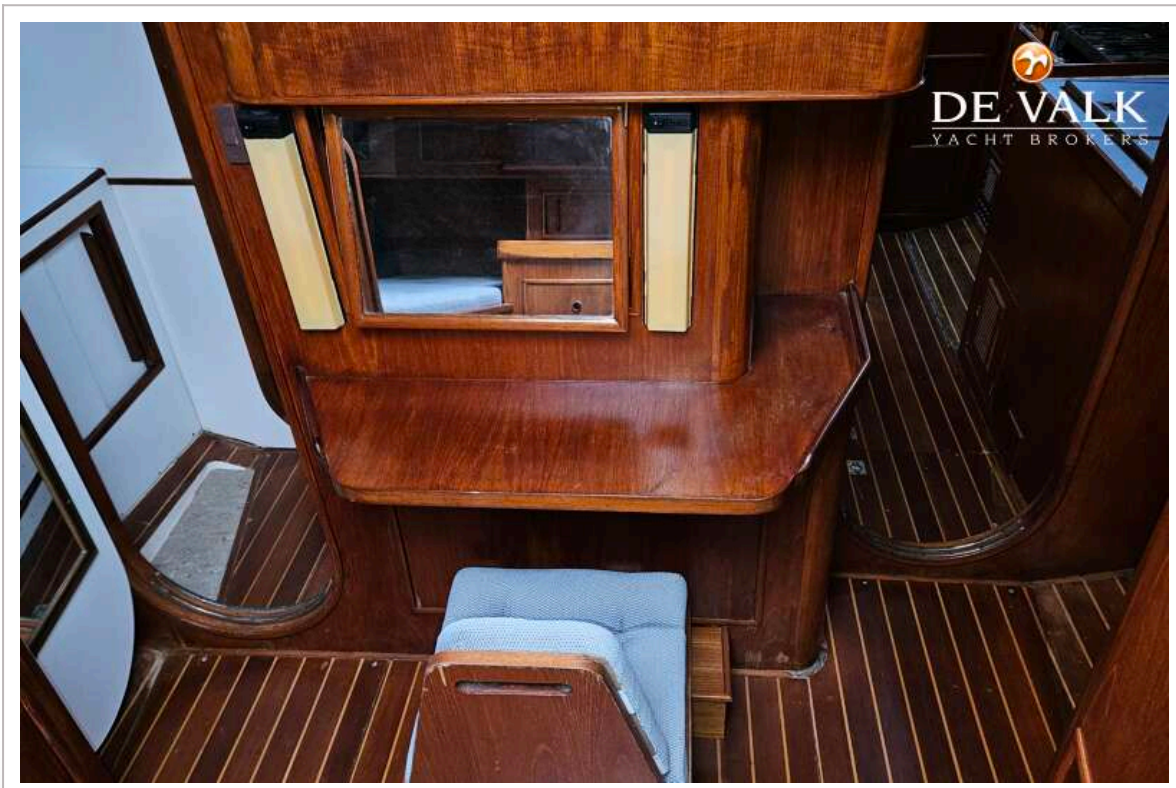
OYSTER 53 HP



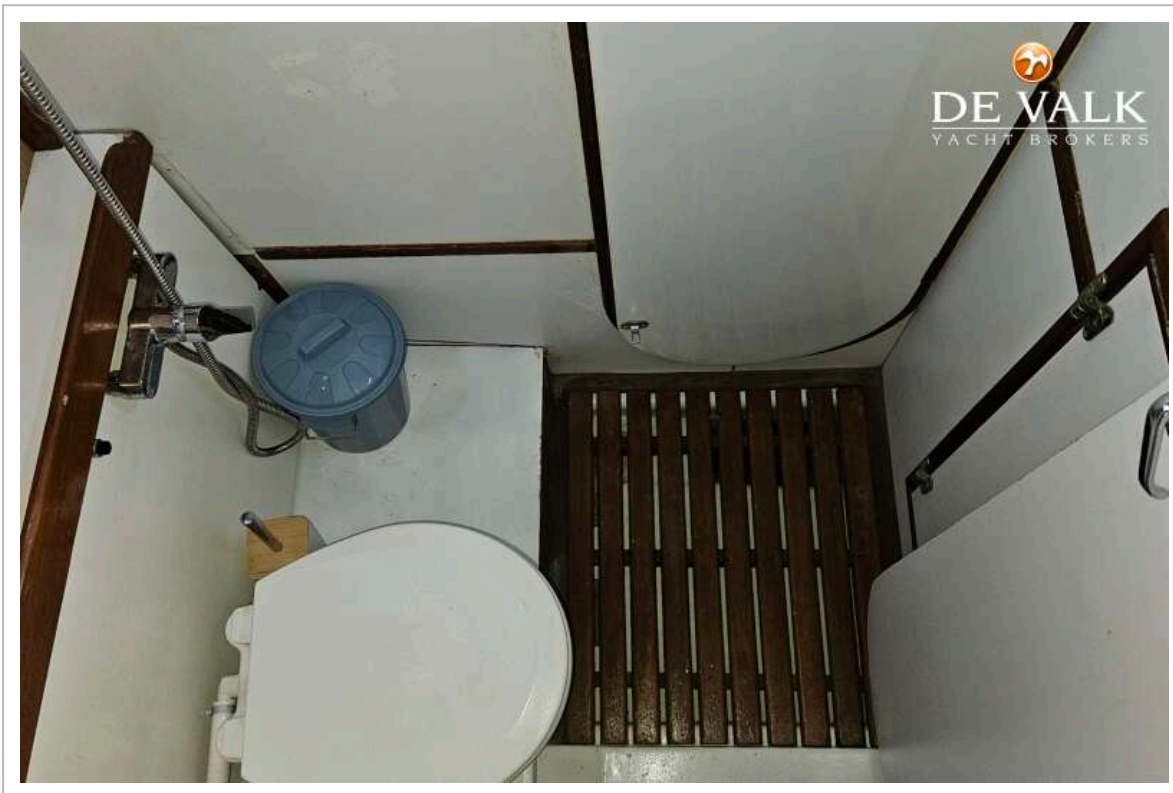
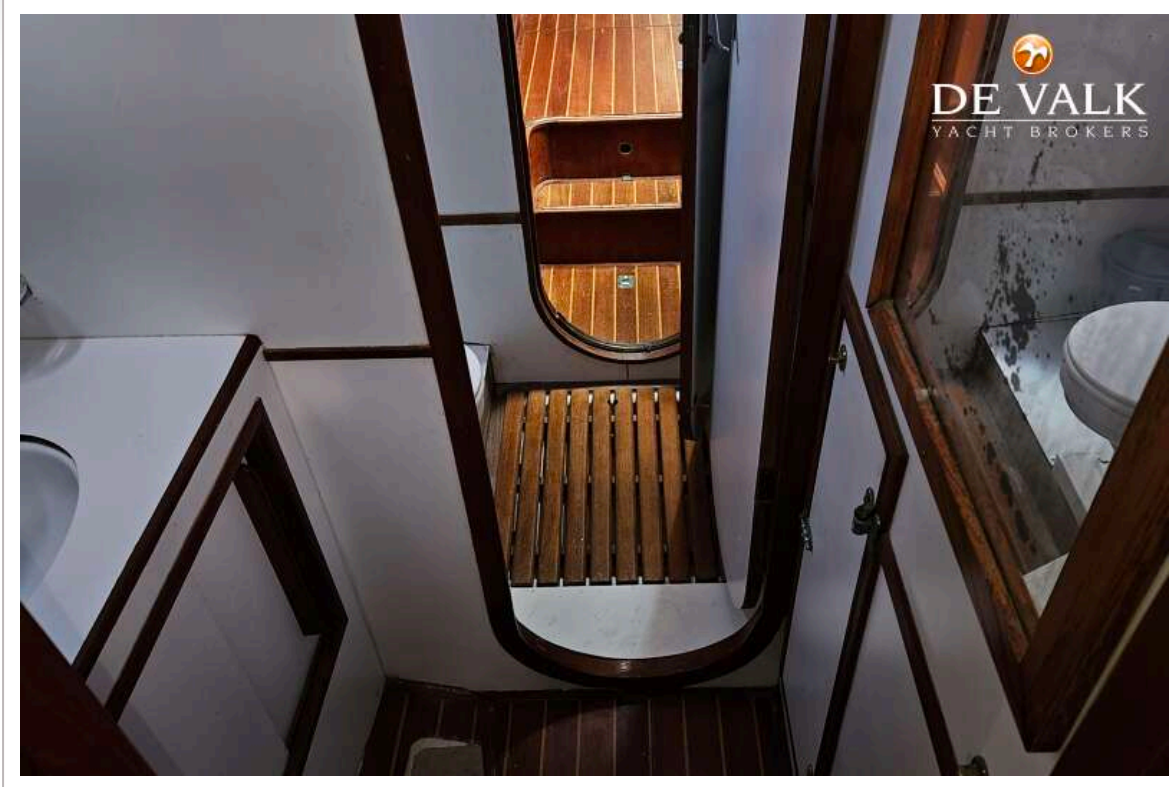
OYSTER 53 HP



OYSTER 53 HP



OYSTER 53 HP



OYSTER 53 HP

