



DE VALK
YACHT BROKERS



GUY COUACH 1501 FLY



DE VALK
YACHT BROKERS

GUY COUACH 1501 FLY

BROKER'S COMMENTS

A rare opportunity to own a classic 1989 motorboat with a mooring on the highly sought-after island of Porquerolles. With property prices on the island skyrocketing, this boat offers an ideal alternative as a unique floating apartment. Enjoy breathtaking views and direct access to the stunning beaches and clear waters of the Mediterranean. The owner has invested in recent upgrades, ensuring the boat is in good and acceptable condition and ready for immediate use. Experience island life like never before – contact us to arrange a viewing!

Marina Stegeman

SPECIFICATIONS

Dimensions	14.60 x 4.34 x 1.10 (m)	Builder	Guy Couach
Built	1989	Cabins	3
Material	GRP	Berths	6
Engine(s)	2 x GM 6VG2TA diesel	Hp/Kw	2 x 557.00 (hp), 409.95 (kw)
Asking price	€ 235.000 (VAT Paid)	Lying	contact Antibes

CONTACT

Sales office	De Valk Antibes	Telephone	+33 492 91 0202
Address	2, Avenue de Verdun 06600 Antibes France	E-mail	antibes@devalk.nl

DISCLAIMER

These particulars are given in good faith as supplied but cannot be guaranteed.



GUY COUACH 1501 FLY

GENERAL

Model	GUY COUACH 1501 FLY
Type	motor yacht
LOA (m)	14,60
Beam (m)	4,34
Draft (m)	1,10
Year built	1989
Builder	Guy Couach
Country	France
CE norm	B
Hull material	GRP
Hull colour	white
Hull shape	deep-V
Superstructure material	GRP
Deck material	teak
Deck finish	teak
Antifouling (year)	yes
Flybridge	yes
Flybridge cockpit cover	yes
Fuel tank (litre)	2500
Level indicator (fuel tank)	yes
Freshwater tank (litre)	600
Wheel steering	yes
Inside helm position	yes
Flybridge helm position	yes

ACCOMMODATION

Cabins	3
Berths	6
Sliding door to aft deck	yes
Galley	yes



GUY COUACH 1501 FLY

Countertop	yes
Sink	yes
Fridge	yes
Hot water system	yes
Water pressure system	yes
Manual and/or foot pump	yes
Owners cabin	French bed
Wardrobe	hanging and drawers
Bathroom	en suite
Toilet	yes
Toilet system	electric
Shower	yes
Guest cabin 1	double bed
Wardrobe	hanging and drawers
Bathroom	shared
Toilet	shared
Toilet system	electric
Shower	shared
Guest cabin 2	double bed
Wardrobe	hanging and drawers
Bathroom	shared
Toilet	shared
Toilet system	electric
Shower	shared
Flybridge	yes

MACHINERY

No of engines	2
Make	GM
Type	6VG2TA
HP	557



GUY COUACH 1501 FLY

kW	409.95
Fuel	diesel
Cruising speed (kn)	23
Engine hours	2700
Drive	shaft
Generator	wet exhaust Cummins
Shorepower	with cable

NAVIGATION

Compass	yes
Compass on flybridge	yes
Radar/GPS/plotter	Raymarine
Navigation lights	yes

EQUIPMENT

Bimini	yes
Cockpit cushions	yes
Bathing platform	yes
Anchor	yes
Dinghy	yes
Outboard	yes
Fenders	yes
Mooring lines	yes
Spare parts	Many spareparts
Tools	yes



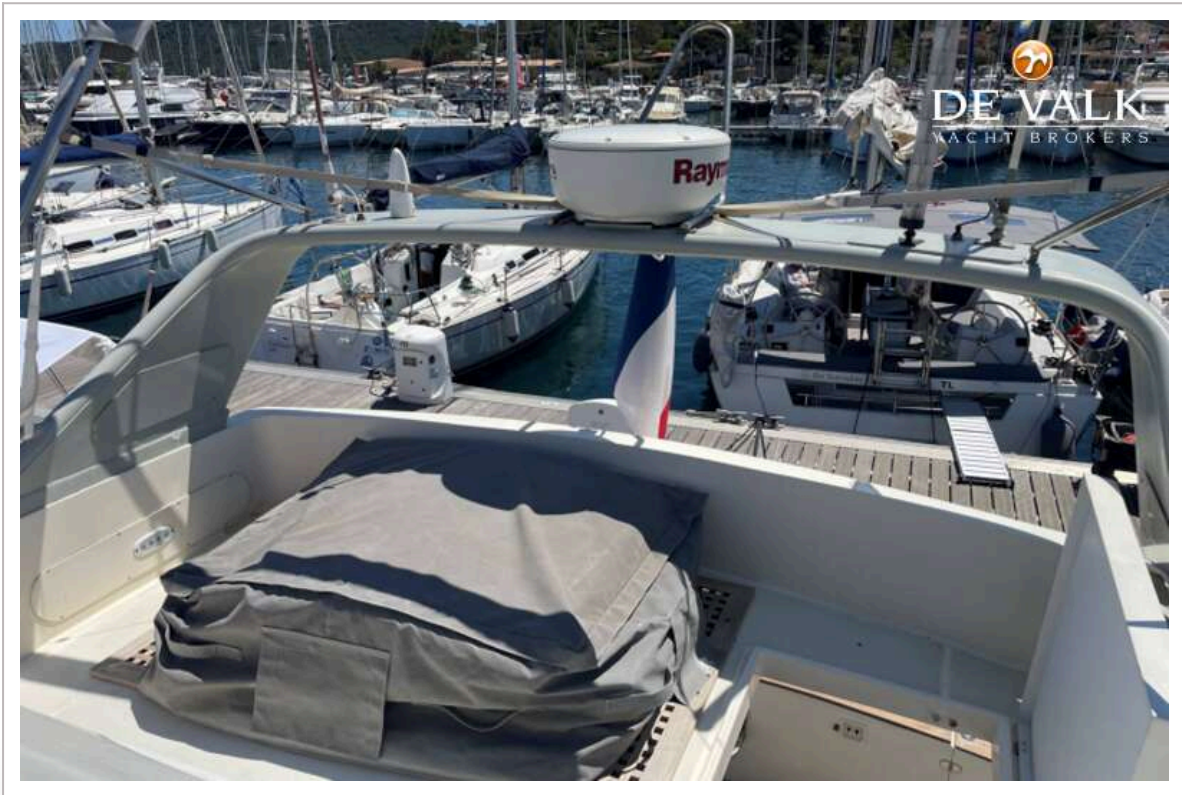
GUY COUACH 1501 FLY



GUY COUACH 1501 FLY



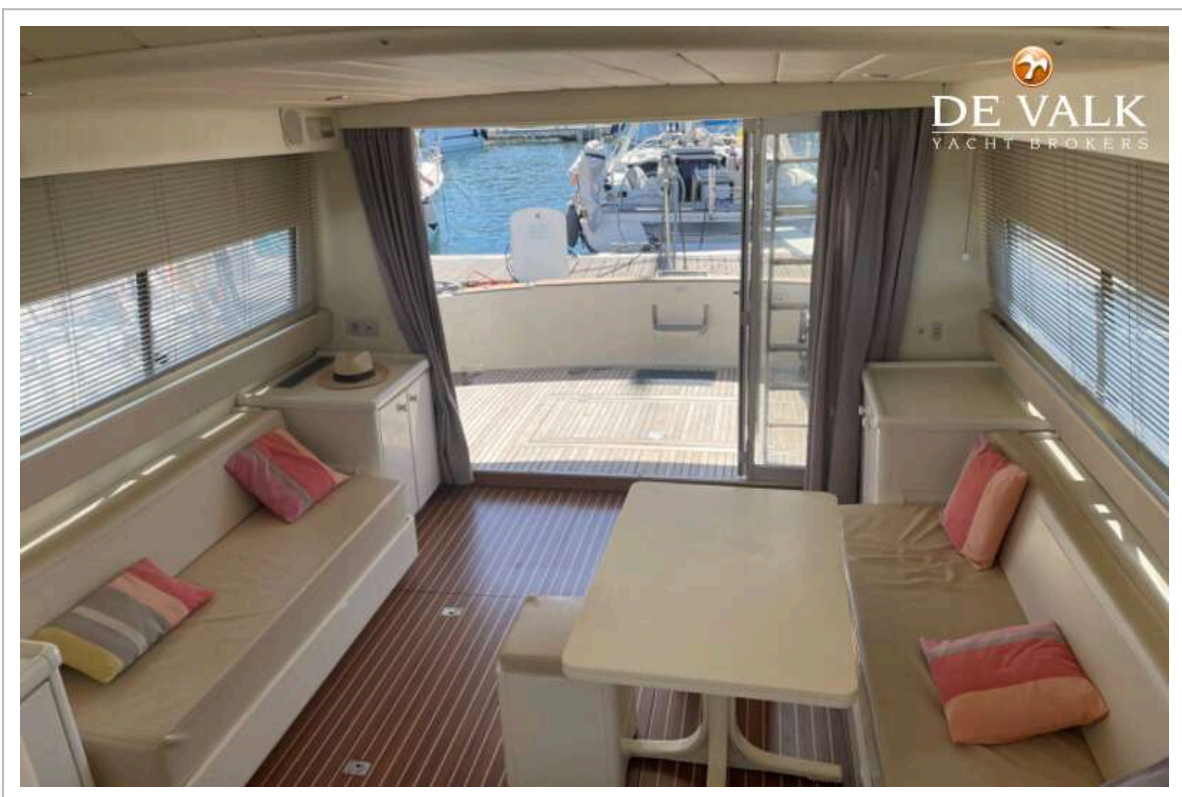
GUY COUACH 1501 FLY



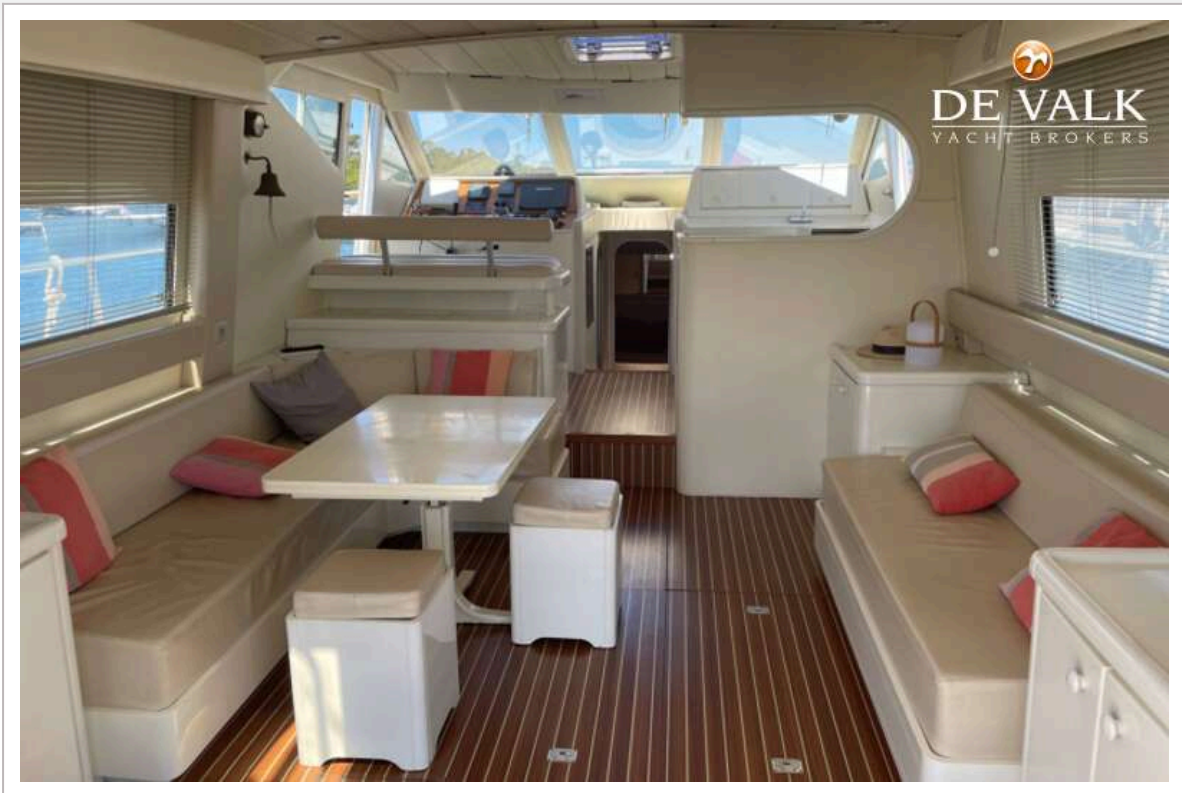
GUY COUACH 1501 FLY



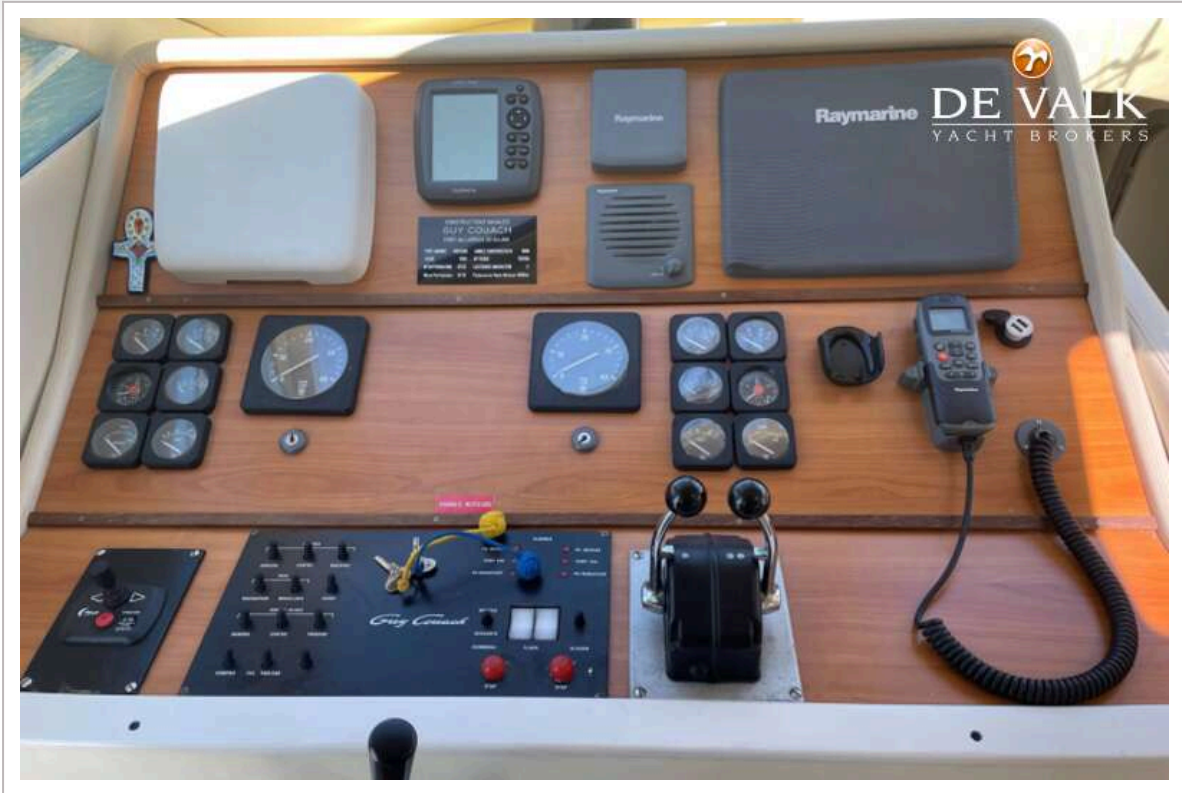
GUY COUACH 1501 FLY



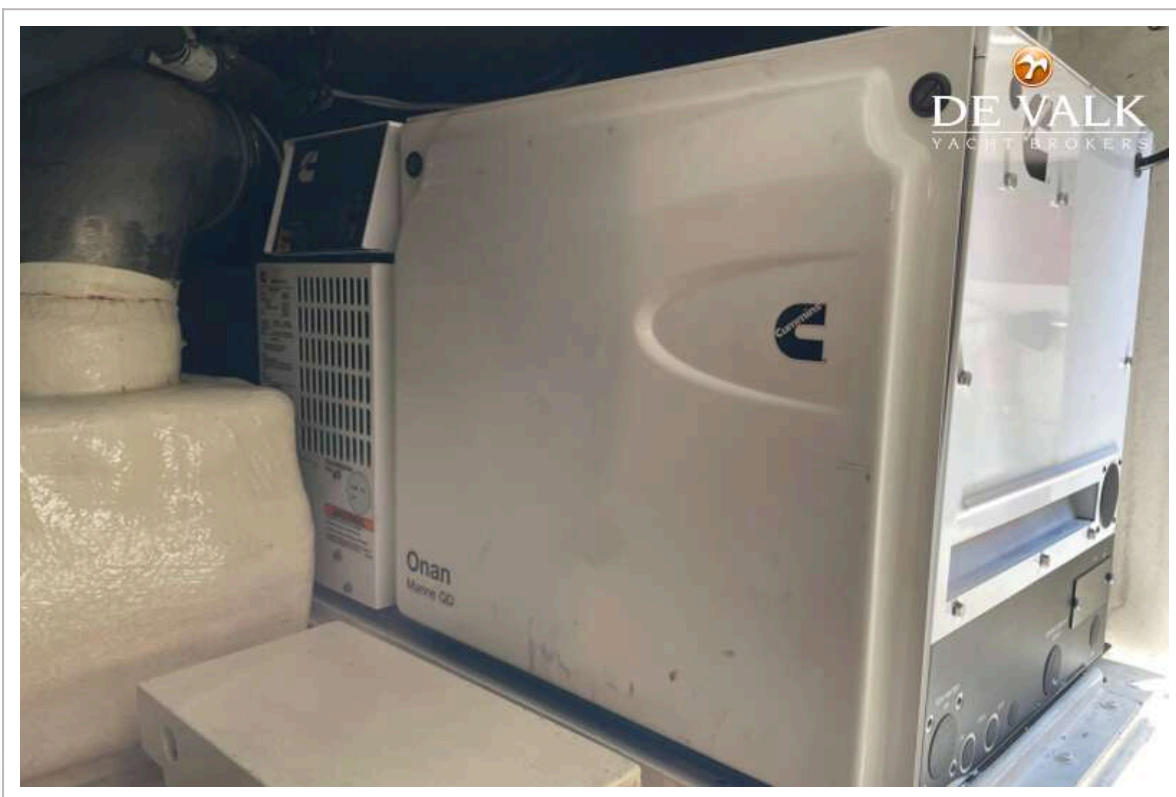
GUY COUACH 1501 FLY



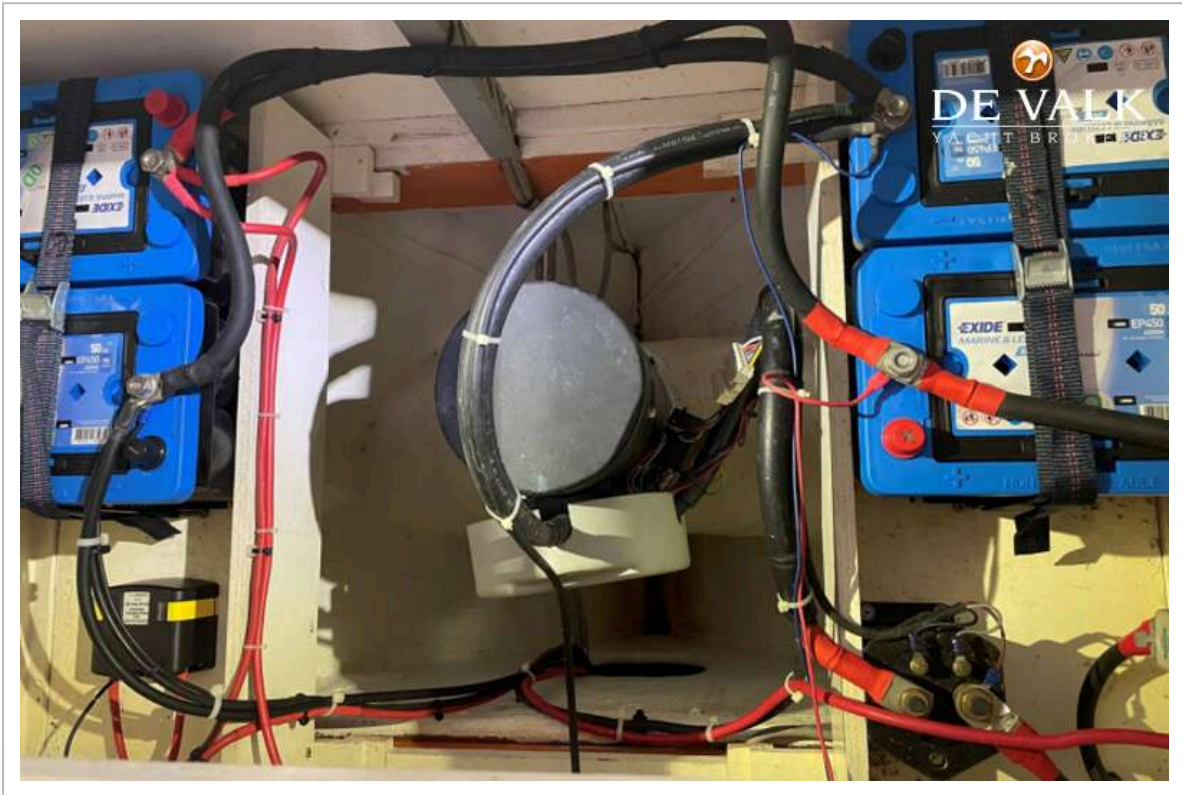
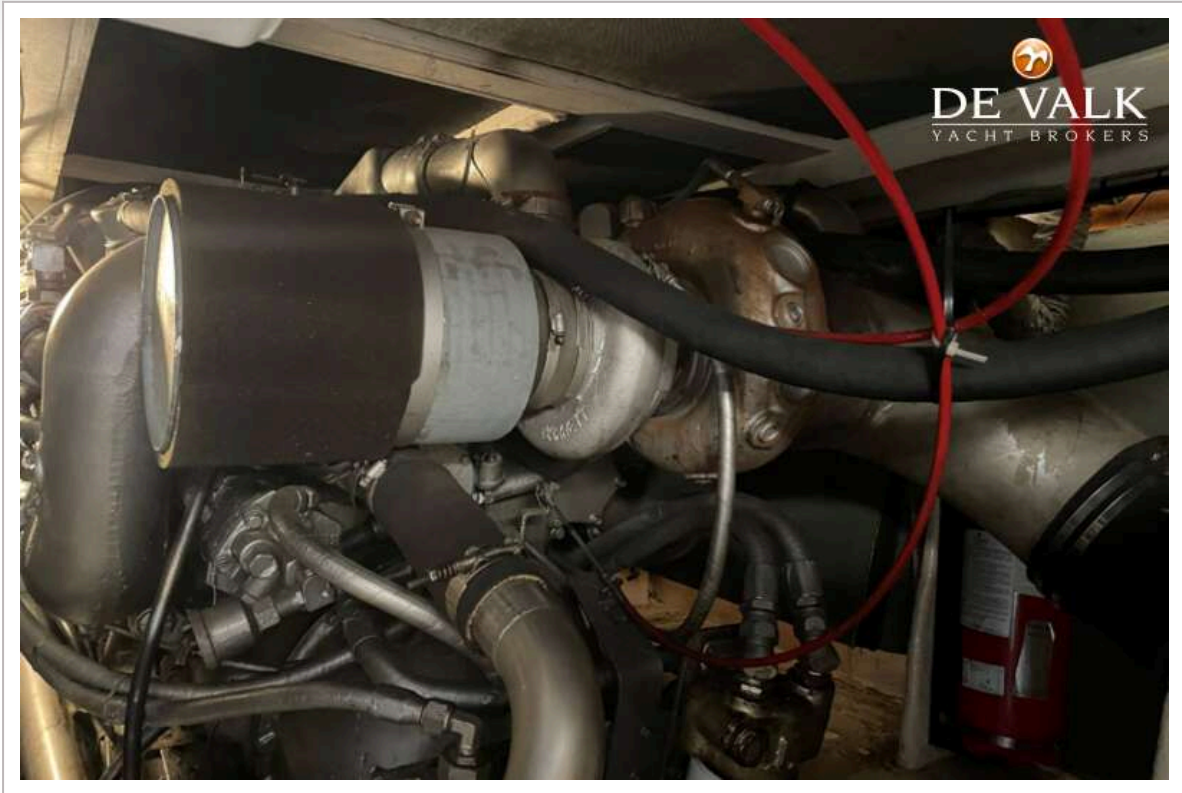
GUY COUACH 1501 FLY



GUY COUACH 1501 FLY



GUY COUACH 1501 FLY



GUY COUACH 1501 FLY

