



DE VALK
YACHT BROKERS



BAVARIA 37 CRUISER



DE VALK
YACHT BROKERS

BAVARIA 37 CRUISER

BROKER'S COMMENTS

This Bavaria 37 cruiser has a practical layout with 3 cabins and light interior. She is equipped with a bowthruster and a lazybag for optimal and safe sailing comfort with good sailing characteristics under all circumstances. This Bavaria 37 cruiser has the necessary comfort on board with a spacious saloon, shared bathroom accessible from the owners cabin and saloon and plenty of storage space. She has several renewings during the years including a new engine.

Joris van de Rijt

SPECIFICATIONS

Dimensions	11.35 x 3.80 x 1.60 (m)	Builder	Bavaria Yachtbau
Built	2006	Cabins	3
Material	GRP	Berths	8
Engine(s)	1 x Volvo Penta D1-30F diesel	Hp/Kw	27 (hp), 19.87 (kw)
Asking price	Under Offer (VAT Paid)	Lying	at sales office

CONTACT

Sales office	De Valk Sint Annaland	Telephone	+31 166 601 000
Address	Koelhuisweg 4 4697 RM Sint Annaland The Netherlands	E-mail	sintannaland@devalk.nl

DISCLAIMER

These particulars are given in good faith as supplied but cannot be guaranteed.



BAVARIA 37 CRUISER

GENERAL

Model	BAVARIA 37 CRUISER
Type	sailing yacht
LOA (m)	11,35
Beam (m)	3,80
Draft (m)	1,60
Air draft (m)	17,70
Headroom (m)	2,00
Year built	2006
Builder	Bavaria Yachtbau
Country	Germany
Designer	J&J Design
Displacement (t)	6,9
Ballast (tonnes)	cast iron 1,9
CE norm	A
Hull material	GRP
Hull colour	white
Keel type	fin keel Shallow draft keel (1,60m)
Superstructure material	GRP
Rubbing strake	aluminum
Deck material	GRP
Deck finish	teak
Superstructure deck finish	teak
Cockpit deck finish	teak
Antifouling (year)	Winter 2023/2024
Window frame	aluminium
Window material	perspex
Deckhatch	2 x big. 4 x small
Portholes	aluminium 2 x
Fuel tank (litre)	polyethylene 150
Level indicator (fuel tank)	yes



BAVARIA 37 CRUISER

Freshwater tank (litre)	polyethylene 210
Level indicator (freshwater)	yes
Blackwater tank (litre)	polyethylene 80 (not connected)
Level indicator (blackwater)	"full" indicator (sensor needs to be cleaned)
Blackwater tank extraction	deck extraction + uw line (not connected)
Wheel steering	chain steering
Emergency tiller	yes
Extra info	All seacocks + hoses replaced in winter 2022/2023

ACCOMMODATION

Cabins	3
Berths	8
Interior	mahogany
Floor	woodprint
Saloon	yes
Headroom saloon (m)	2,00
Heating	diesel ducted hot air Webasto
Chart table	yes
Aft Cabin	2 x
Dinette	Foldable
Galley	yes
Countertop	plastic
Sink	stainless steel 2 x
Cooker	2 burner
Oven	yes
Fridge	Toploader
Hot water system	220V + engine
Water pressure system	electrical
Owners cabin	v-bed
Bed length (m)	2,00
Wardrobe	hanging and drawers



BAVARIA 37 CRUISER

Bathroom	en suite Entrance from owners cabin and from saloon
Toilet	en suite
Toilet system	manual Jabsco
Wash basin	in the bathroom
Shower	en suite
Guest cabin 1	double bed
Bed length (m)	2,00
Wardrobe	shelves
Guest cabin 2	double bed
Bed length (m)	2,00
Wardrobe	shelves

MACHINERY

No of engines	1
Make	Volvo Penta
Type	D1-30F
HP	27
kW	19.87
Fuel	diesel
Year installed	2020
Engine hours	821
Engine cooling system	freshwater heat exchanger
Drive	sail-drive
Saildrive seal	New 2020
Engine controls	bowden cable
Gearbox	mechanical
Bowthruster	electric Craftsman (2020)
Propeller type	fixed
Manual bilge pump	yes
Electric bilge pump	yes
Electrical installation	12V / 220V



BAVARIA 37 CRUISER

Start battery	50Ah (new 2020)
Service battery	2 x 75Ah (new 2024)
Battery monitor	Bavaria panel
Battery charger	Cristec 40A
Diode battery combiners	Mastervolt (new 2023)
Shorepower	with cable
Extra info	Engine 2020. Saildrive 2006. Saildrive seal 2020

NAVIGATION

Compass	Plastimo
Depth sounder/log	Raymarine ST60+
Windset	Raymarine ST60+
VHF	Icom IC-M411
Autopilot	Raymarine ST6002
Rudder angle indicator	Via autopilot
Plotter	Raymarine C70
Navtex	Furuno
Electronic chart(s)	yes
Navigation lights	yes

EQUIPMENT

Sprayhood	With new windows winter 2023/2024
Cockpit table	Foldable
Bathing platform	yes
Boarding ladder	stainless steel
Deck shower	Hot+cold on swimming platform
Anchor	CQR Plough
Anchor chain	Rope
Sea railing	wire
Grab rail (superstructure)	stainless steel
Pushpit	yes



BAVARIA 37 CRUISER

Pulpit	yes
Radar reflector	yes
Fenders	yes
Mooring lines	yes
TV	Grundig
Radio-cd player	JVC
Speakers in salon	yes

RIGGING

Rigging	fractional
Standing rigging	wire
Brand mast	Seldén
Material mast	aluminium
Spreaders	2 sets
Mainsail	New 2020
Mainsail cover	Lazybag
Genoa	New 2020
Genoa furler	Furlex
Reefing System	quick-one-line-reefing
Backstay adjuster	tackle
Boomvang	gasspring
Genoa sheetwinches	2 x Lewmar 40ST
Halyard winches	2 x Lewmar 30ST



BAVARIA 37 CRUISER



BAVARIA 37 CRUISER



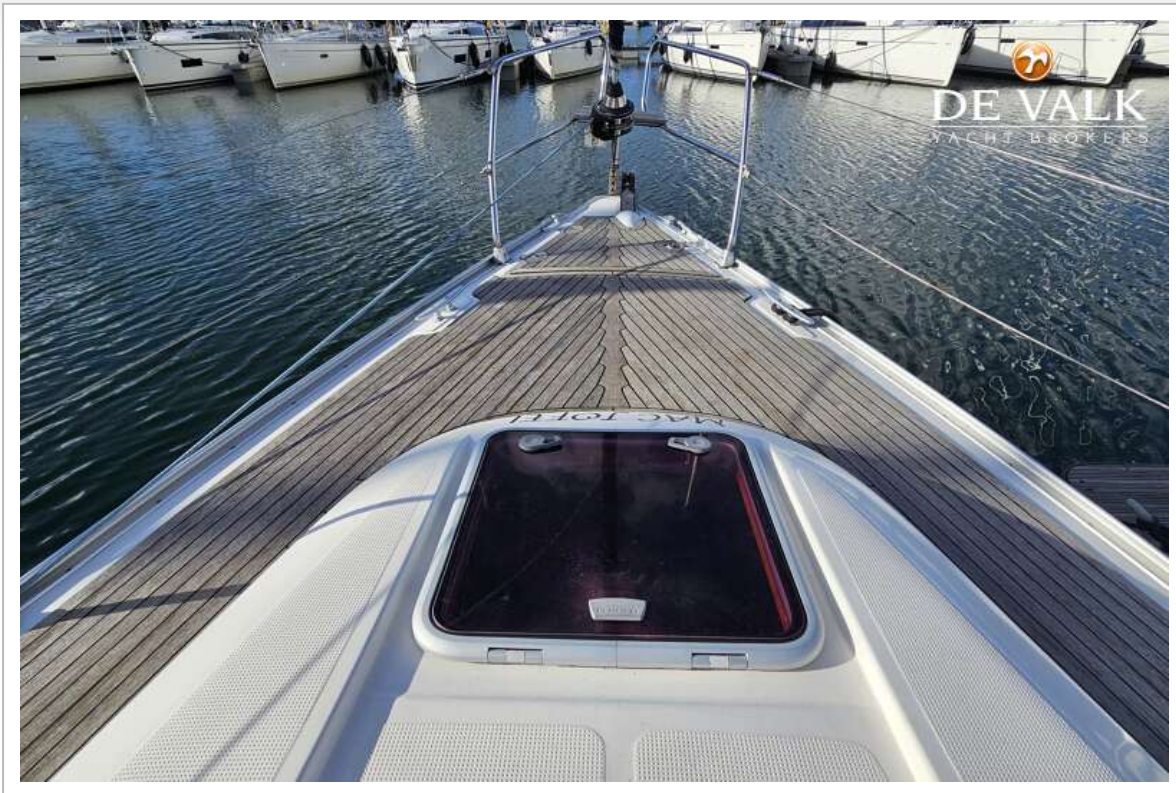
BAVARIA 37 CRUISER



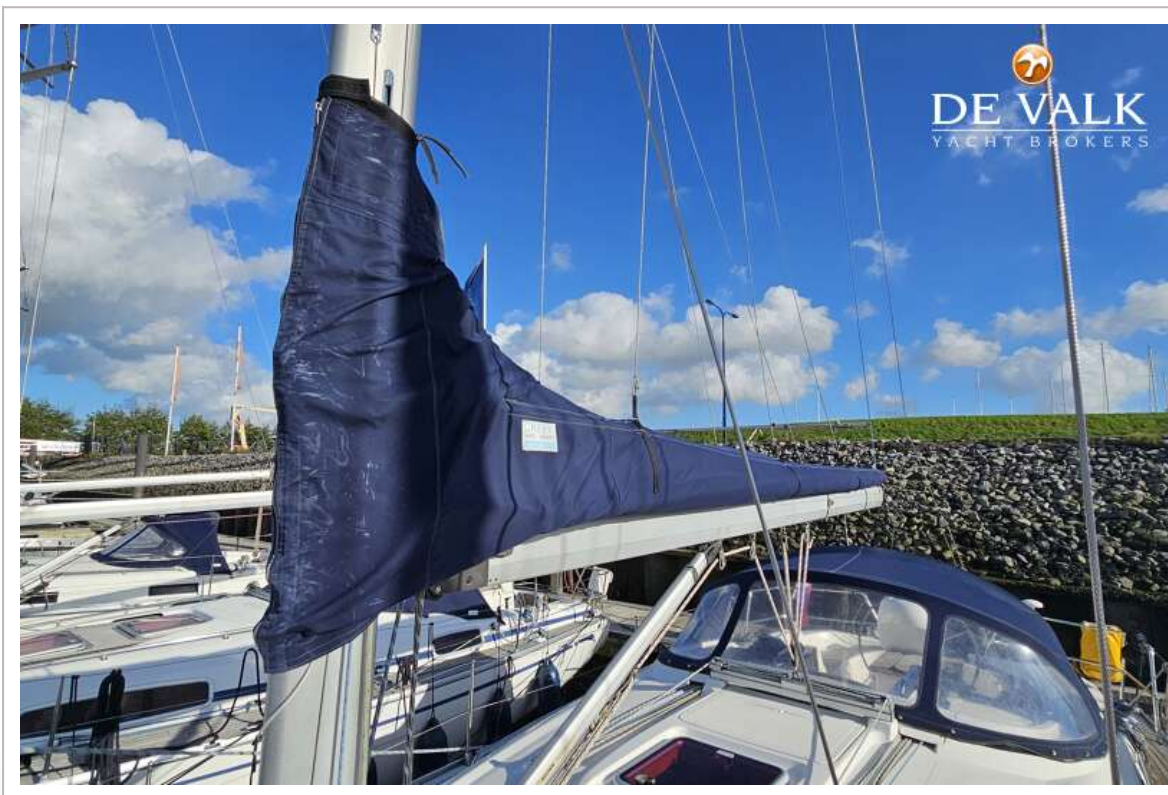
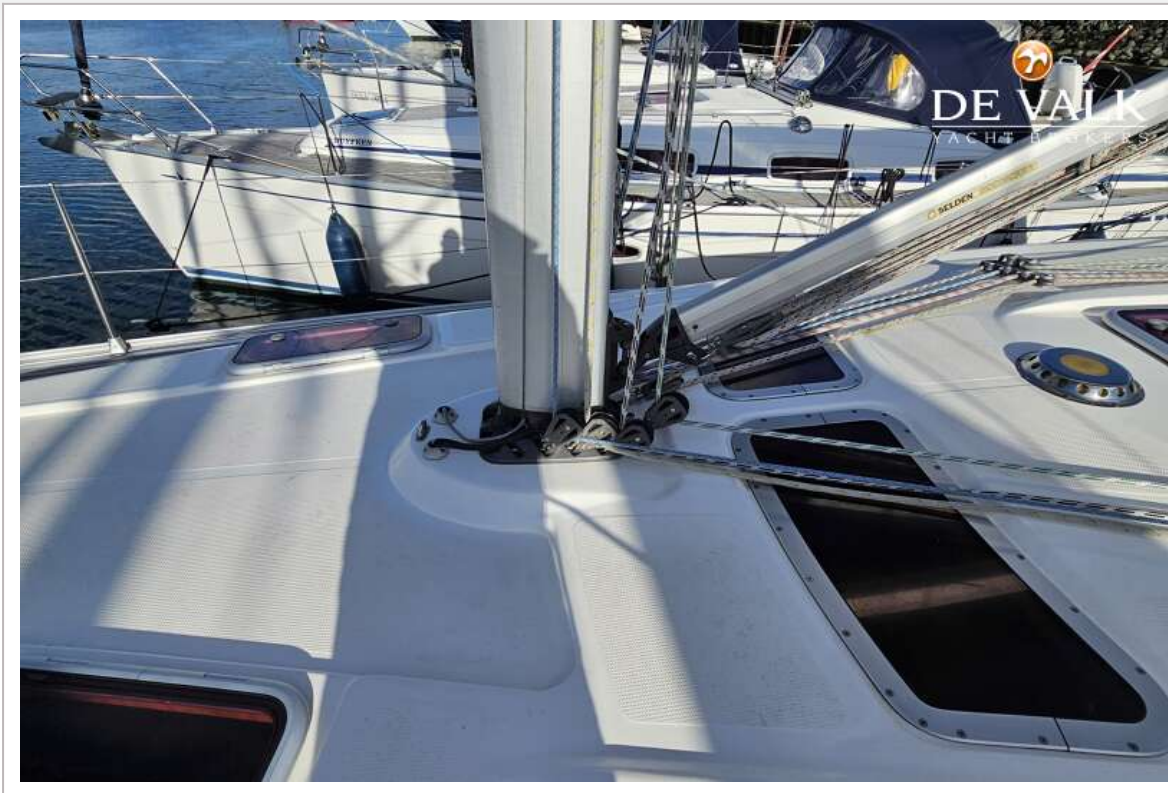
BAVARIA 37 CRUISER



BAVARIA 37 CRUISER



BAVARIA 37 CRUISER



BAVARIA 37 CRUISER



BAVARIA 37 CRUISER



BAVARIA 37 CRUISER



BAVARIA 37 CRUISER



BAVARIA 37 CRUISER



BAVARIA 37 CRUISER



BAVARIA 37 CRUISER



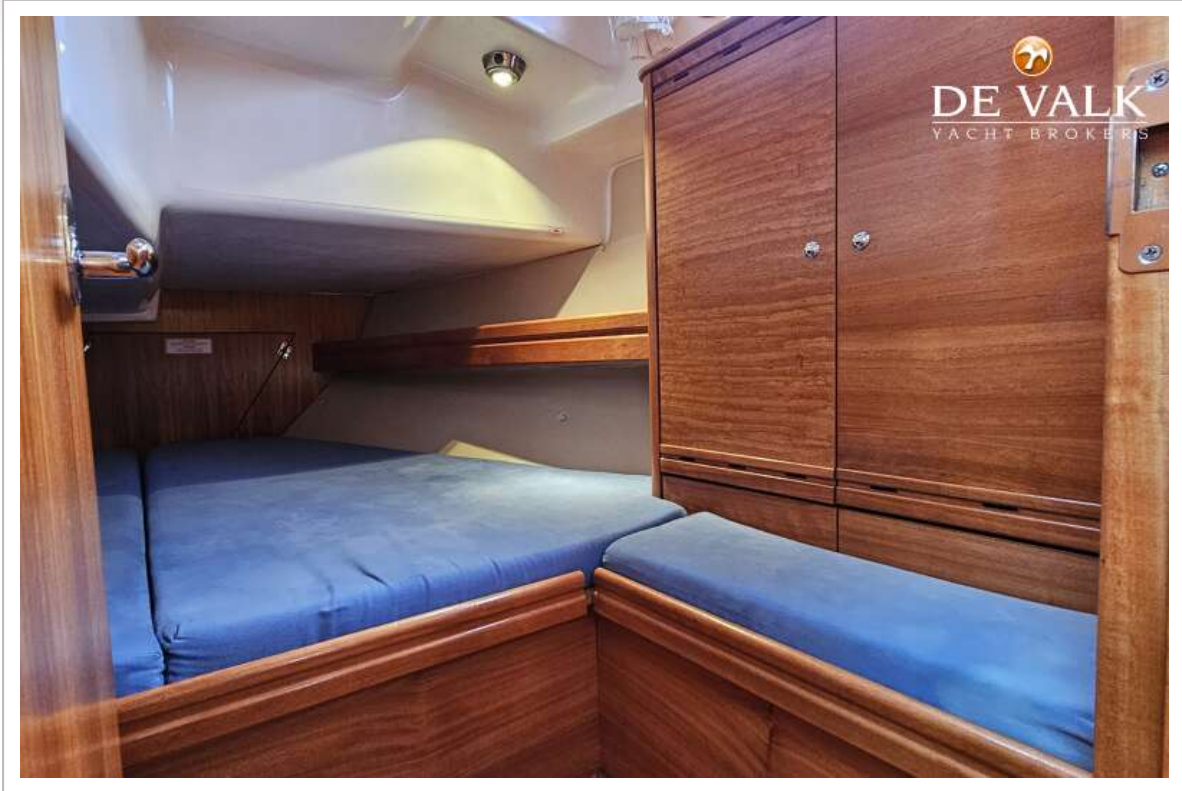
BAVARIA 37 CRUISER



BAVARIA 37 CRUISER



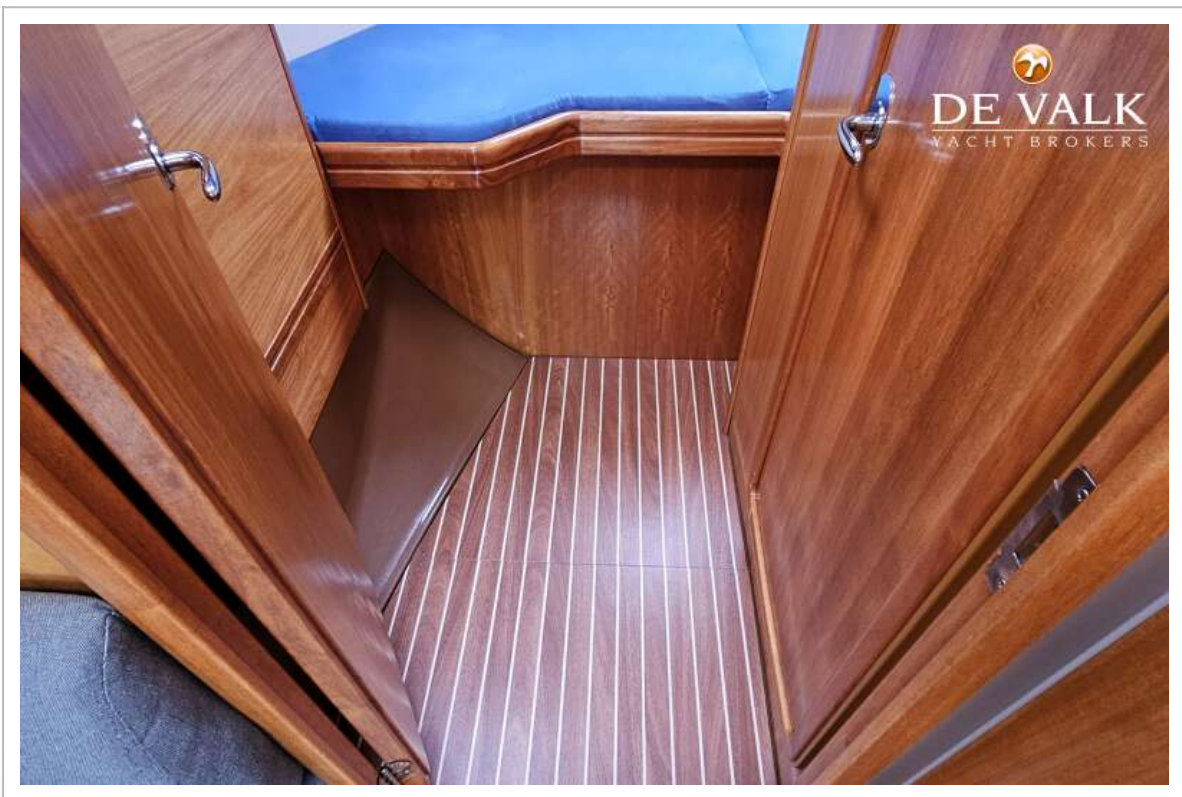
BAVARIA 37 CRUISER



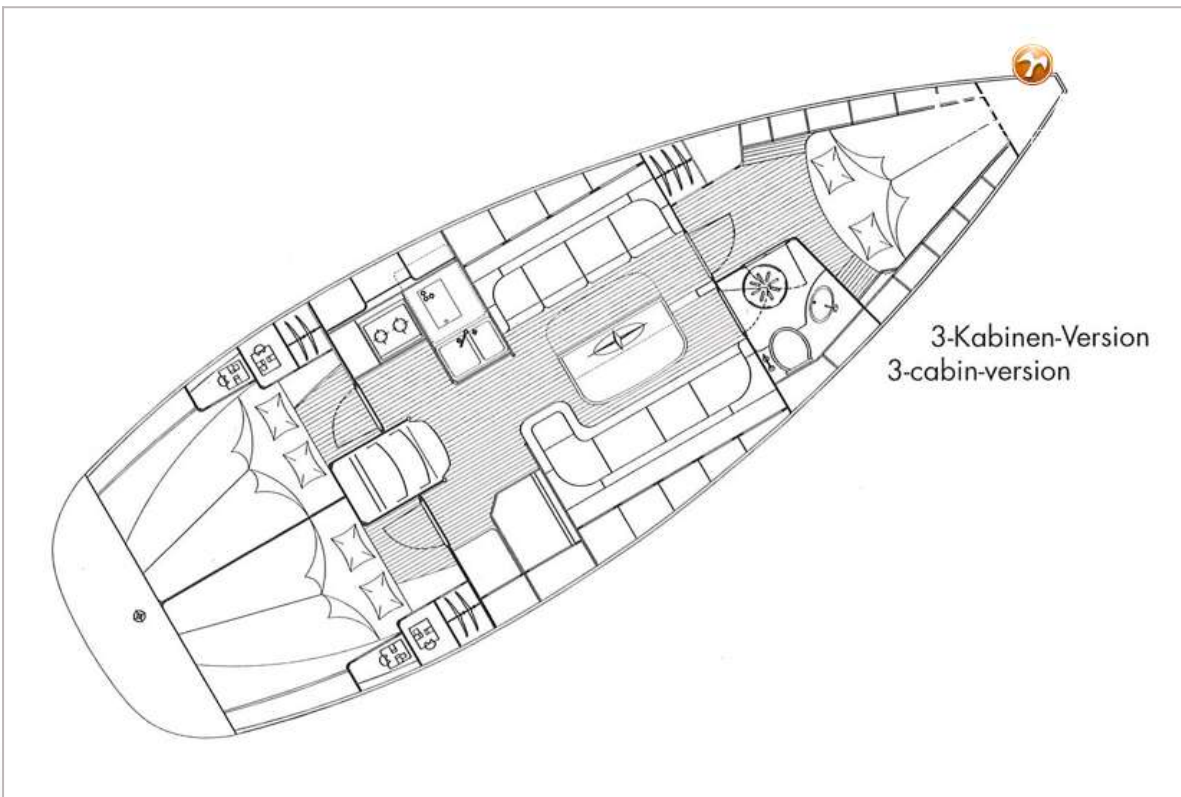
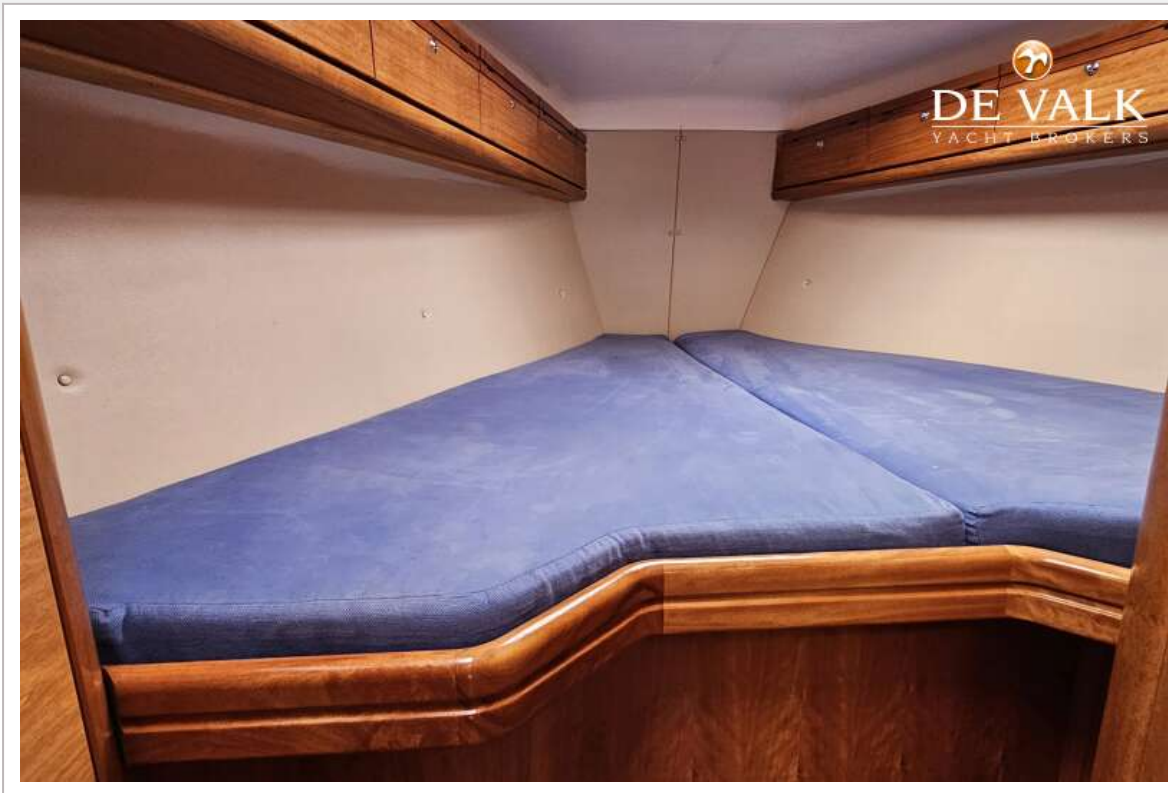
BAVARIA 37 CRUISER



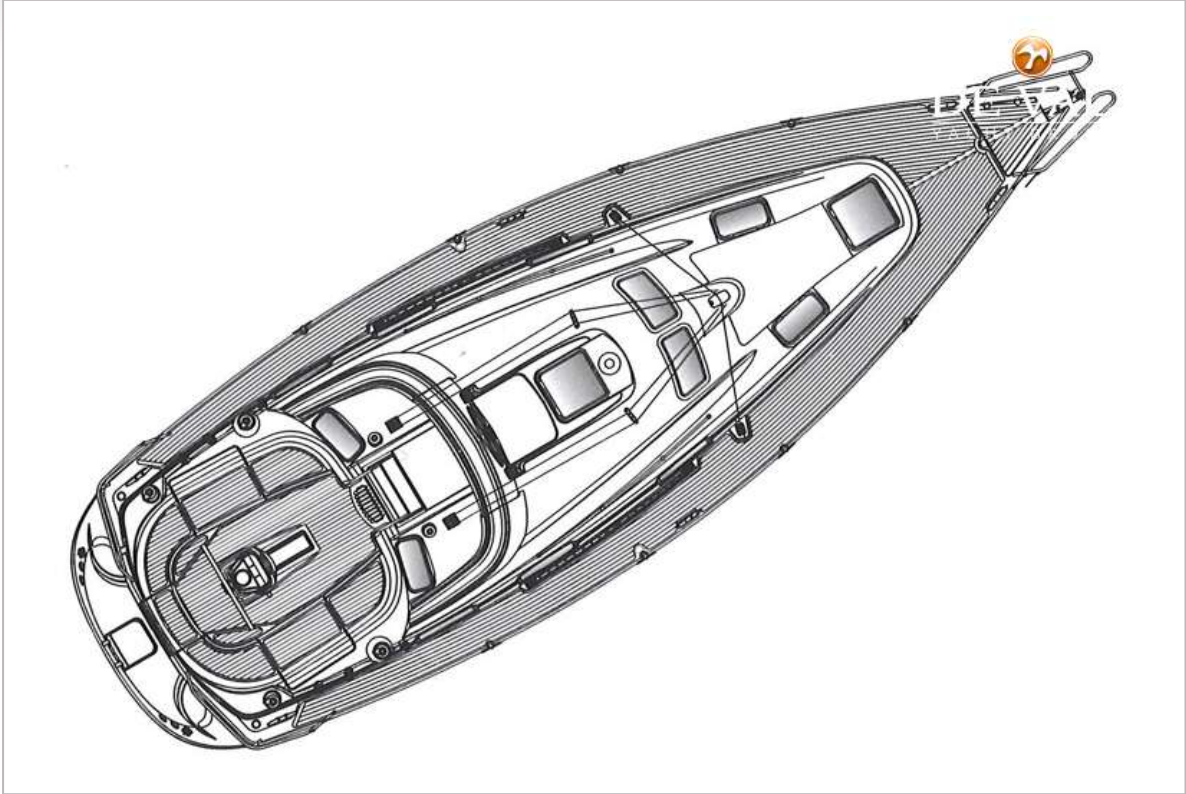
BAVARIA 37 CRUISER



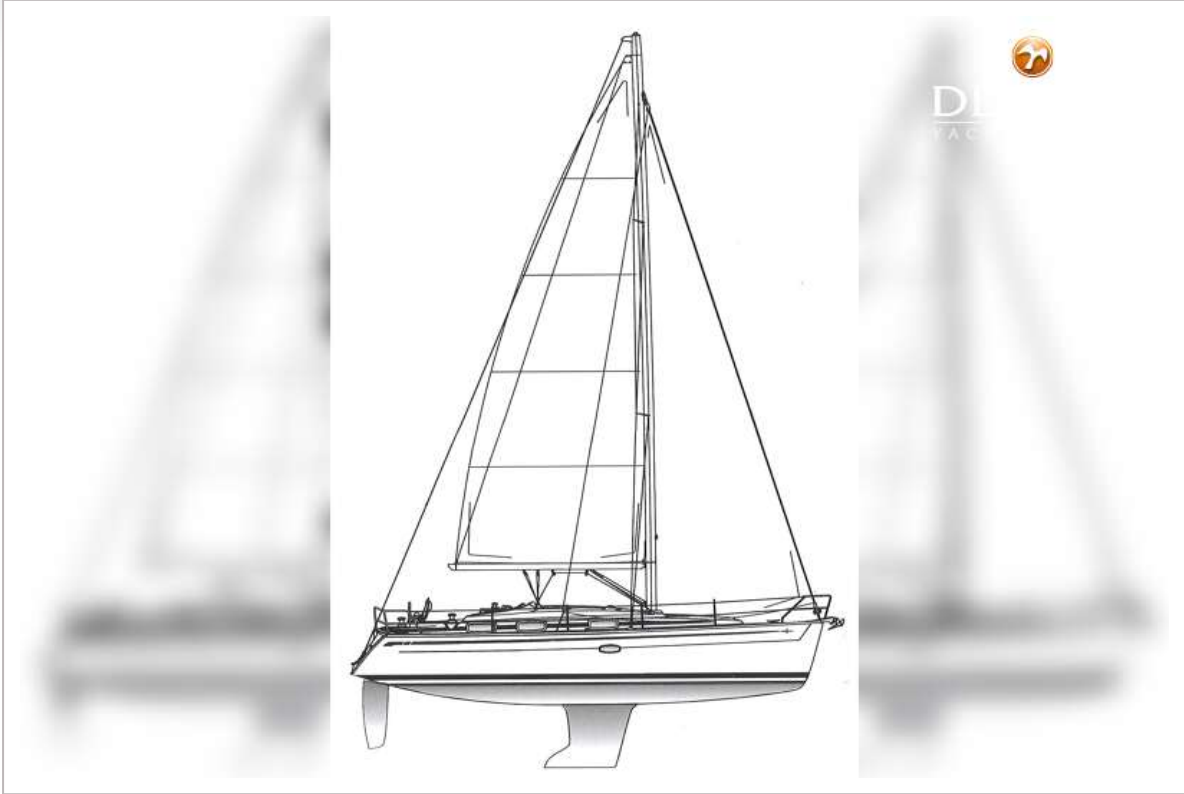
BAVARIA 37 CRUISER



BAVARIA 37 CRUISER



BAVARIA 37 CRUISER



BAVARIA 37 CRUISER

