



DE VALK
YACHT BROKERS



SEALINE S330



DE VALK
YACHT BROKERS

SEALINE S330

BROKER'S COMMENTS

A beautiful Sealine S330 with year of construction 2016. This fast motorboat is equipped with two Volvo Penta engines of 220 hp each. The control system has been expanded with a bow thruster and joystick steering. With the joystick, docking has really become a piece of cake. The interior is beautifully finished. The two cabins are equipped with double beds. The spacious bathroom has a toilet and shower. In the cockpit is a nice grill with sink, so outdoor cooking is also possible. This ship is now available for viewing in Loosdrecht. Make an appointment soon!

Bas Lohmann

SPECIFICATIONS

Dimensions	10.31 x 3.50 x 0.89 (m)	Builder	Sealine
Built	2016	Cabins	2
Material	GRP	Berths	4
Engine(s)	2 x Volvo Penta diesel	Hp/Kw	2 x 220.00 (hp), 161.92 (kw)
Asking price	€ 209.500 (VAT Paid)	Lying	at sales office

CONTACT

Sales office	De Valk Loosdrecht B.V.	Telephone	+31 (0)35 582 90 30
Address	't Breukeleveense Meentje 6 1231LM Loosdrecht / Wijdmeren NL	E-mail	loosdrecht@devalk.nl

DISCLAIMER

These particulars are given in good faith as supplied but cannot be guaranteed.



GENERAL

Model	SEALINE S330
Type	motor yacht
LOA (m)	10,31
LWL (m)	8,54
Beam (m)	3,50
Draft (m)	0,89
Headroom (m)	2,00
Year built	2016
Builder	Sealine
Country	United Kingdom
Displacement (t)	5,9
CE norm	B
Hull material	GRP
Hull colour	white
Hull shape	V-shaped hull
Superstructure material	GRP
Rubbing strake	rubber
Deck material	GRP
Deck finish	synthetic teak
Superstructure deck finish	synthetic teak
Cockpit deck finish	synthetic teak
Window frame	polymer
Window material	tempered glass
Deckhatch	yes
Portholes	polymer
Radar arch	yes
Fuel tank (litre)	570l
Level indicator (fuel tank)	Volvo Penta
Freshwater tank (litre)	polyethylene 202l
Level indicator (freshwater)	yes



Blackwater tank (litre)	polyethylene 85l
Outside helm position	hydraulic

ACCOMMODATION

Cabins	2
Berths	4
Interior	walnut
Floor	carpet
Deck saloon	yes
Saloon	yes
Headroom saloon (m)	1,95
Sliding roof	manual
Aft Cabin	yes
Dinette	yes
Sliding door to aft deck	yes
Galley	yes
Countertop	granite
Sink	stainless steel
Cooker	calor gas Two Pits
Fridge	1x Isotherm in cockpit, 1x in salon
Freezer	In both fridges
Hot water system	220V + engine
Water pressure system	electrical
Owners cabin	double bed
Bed length (m)	2,00
Wardrobe	hanging and shelves
Bathroom	separate
Toilet	separate Jabsco
Toilet system	electric
Wash basin	in the bathroom
Shower	separate



Guest cabin 1	double bed
Bed length (m)	2,00
Wardrobe	hanging and shelves
Wet bar	With grill and sink outside

MACHINERY

No of engines	2
Make	Volvo Penta
HP	220
kW	161.92
Fuel	diesel
Engine hours	376
Engine cooling system	freshwater heat exchanger
Drive	stern
Engine controls	electrical
Gearbox	mechanical
Bowthruster	electric Quick TCD 1022
Exhaust	watercooled
Propeller type	yes
Electric bilge pump	yes
Batteries	yes
Start battery	2x 95Ah
Service battery	3x 160 Ah (2022)
Bowthruster battery	1x 95 Ah
Battery monitor	Mastervolt
Battery charger	Mastervolt Chargemaster 12/35-3
Inverter	yes
Battery charger/inverter	Mastervolt 12/1600-60
Shorepower	with cable
Trimtabs	Lectrotab
Extra info	Joystick Piloting



NAVIGATION

Compass	Garmin Typ85
Electric compass	Raymarine
Depth sounder/log	Raymarine
Log	Raymarine
VHF handheld	Raymarine Raymic260E
Autopilot	Raymarine
Rudder angle indicator	Volvo Penta
GPS	yes
Plotter/GPS	Raymarine E-serie
Electronic chart(s)	yes
Navigation lights	yes
Searchlight	Marinco

EQUIPMENT

Cockpit cover	Needs maintenance/ needs to be replaced
Cockpit cushions	yes
Cockpit table	yes
Cockpit chairs	yes
Bathing platform	yes
Transom door	yes
Deck shower	yes
Anchor	yes
Anchor chain	yes
Windlass	electrical Quick Dp3 prince series
Deck wash	yes
Sea railing	stainless steel
Wiper	yes
Clearview window	yes
Horn	electric
Fenders	yes



SEALINE S330

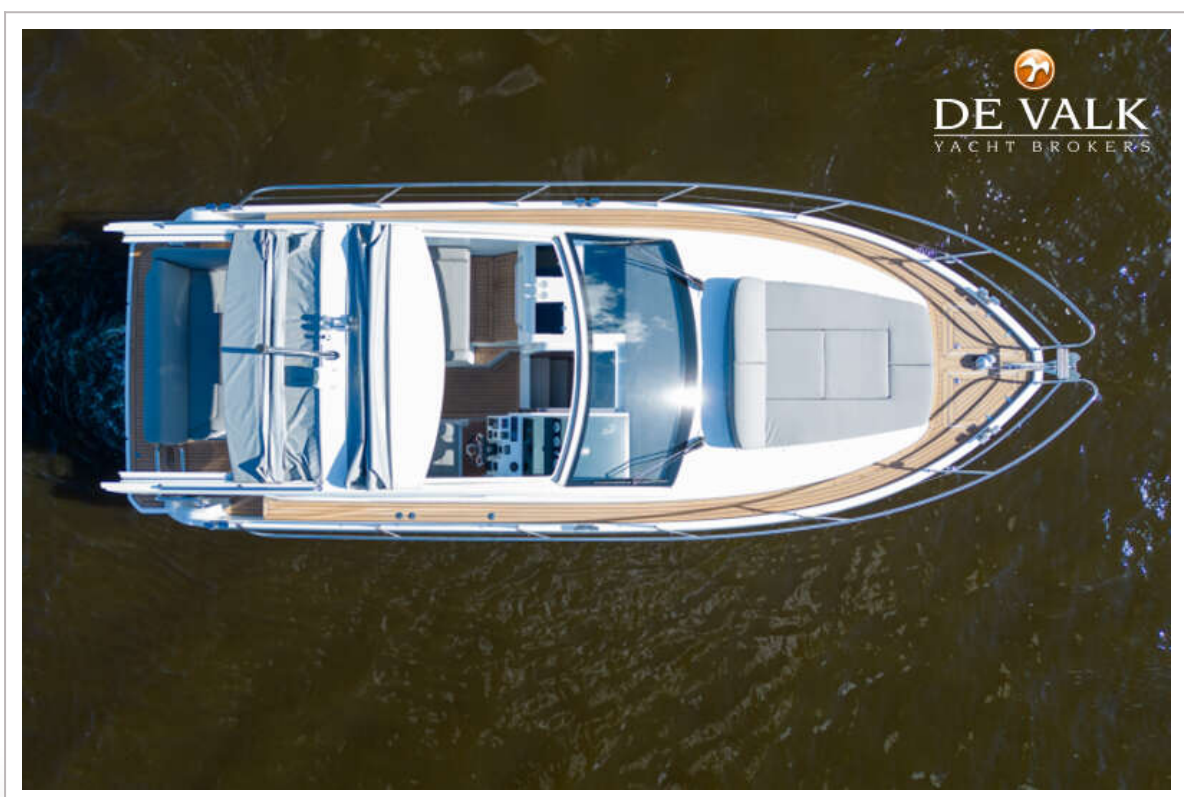
Mooring lines	yes
Radio	Fusion-NRx200i and a Fusion MS-AV750
Cockpit speakers	yes
Speakers in salon	yes



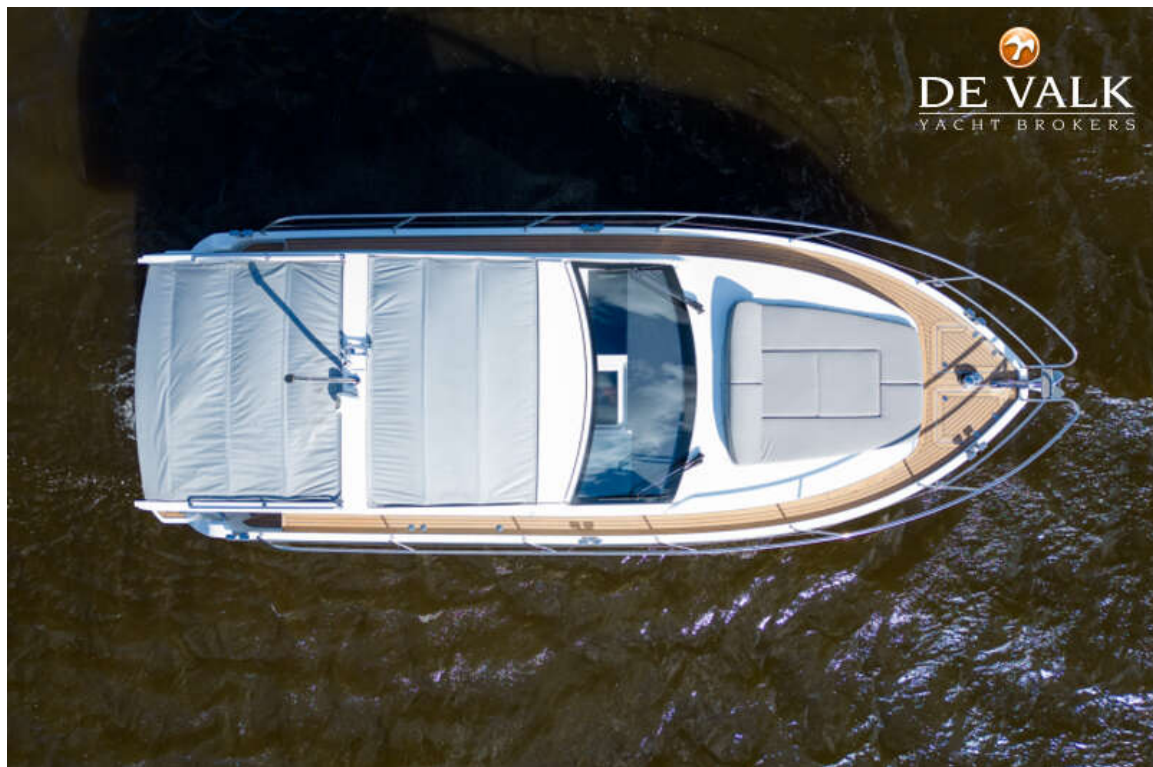
SEALINE S330



SEALINE S330



SEALINE S330



SEALINE S330



SEALINE S330



SEALINE S330



SEALINE S330



SEALINE S330



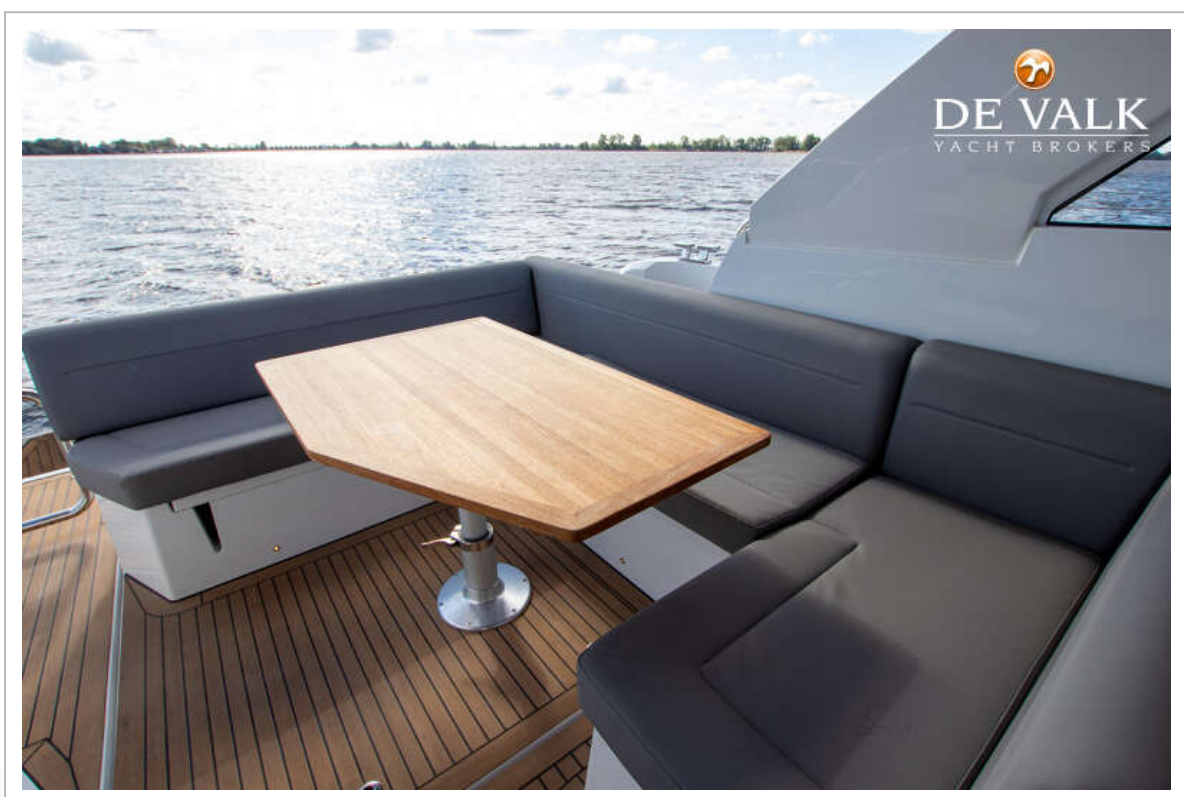
SEALINE S330



SEALINE S330



SEALINE S330



SEALINE S330



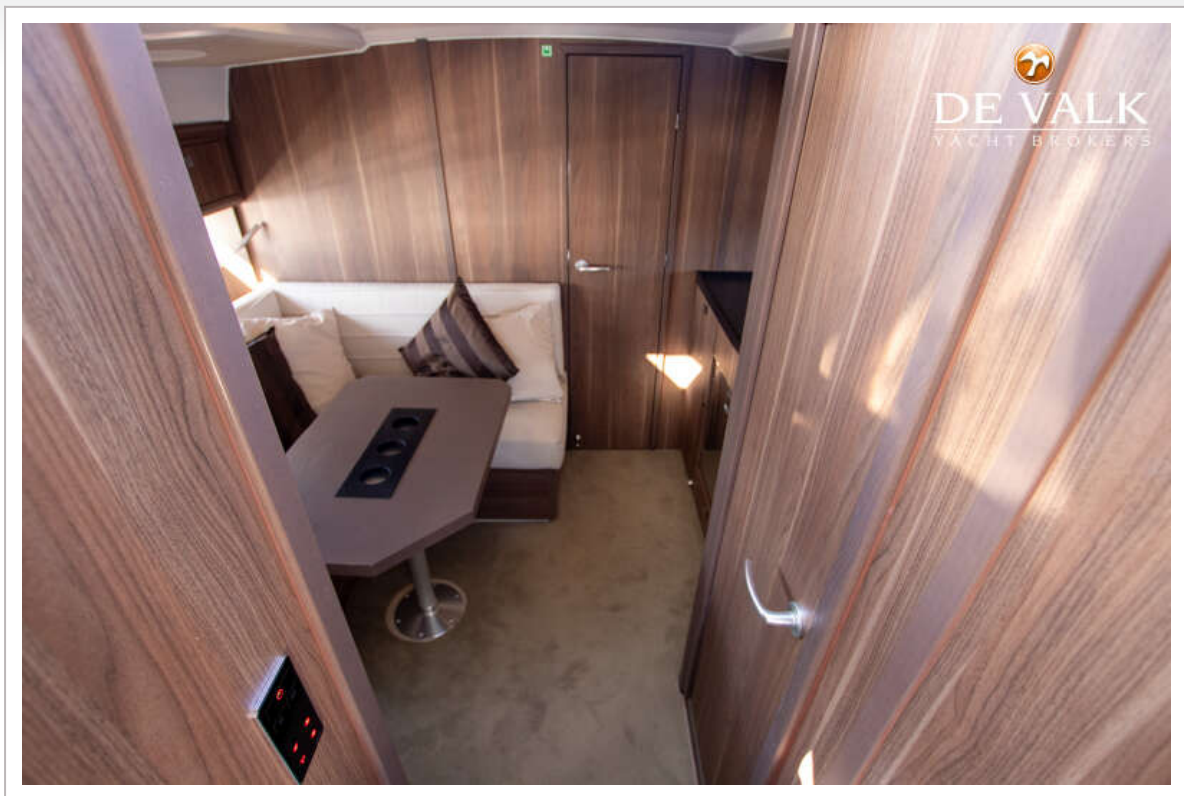
SEALINE S330



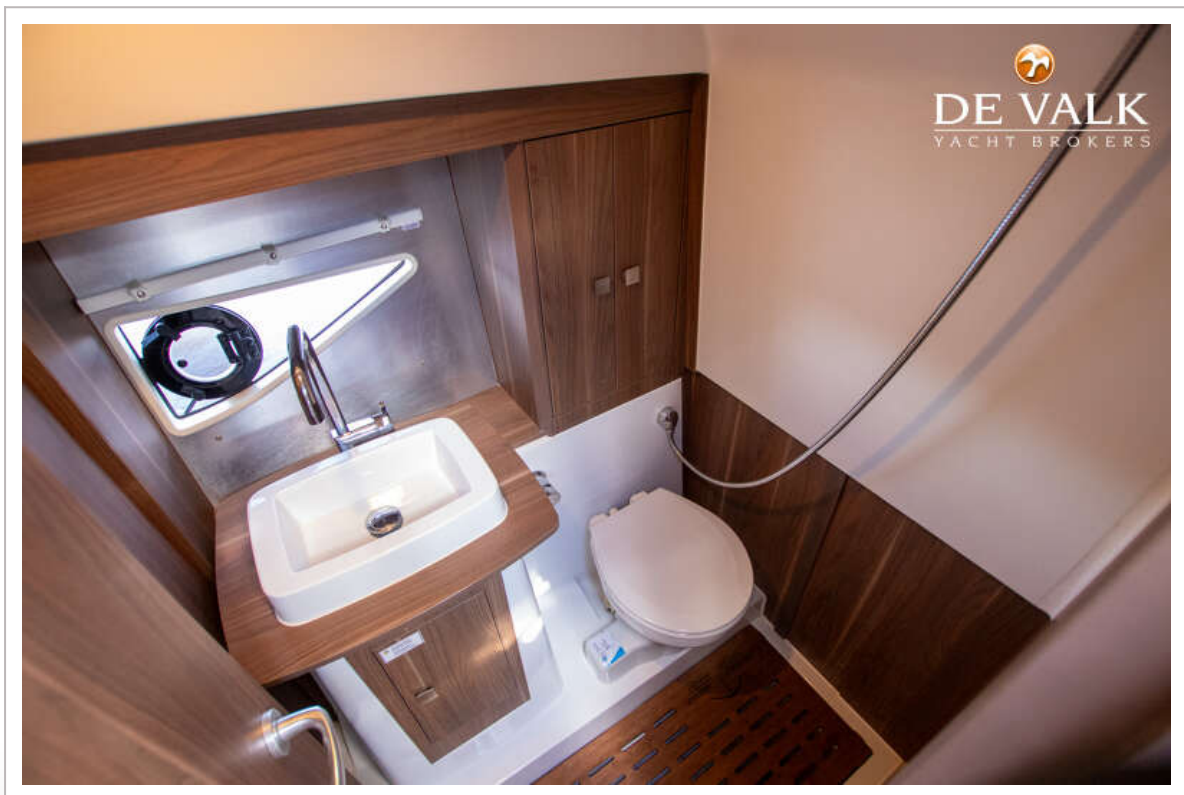
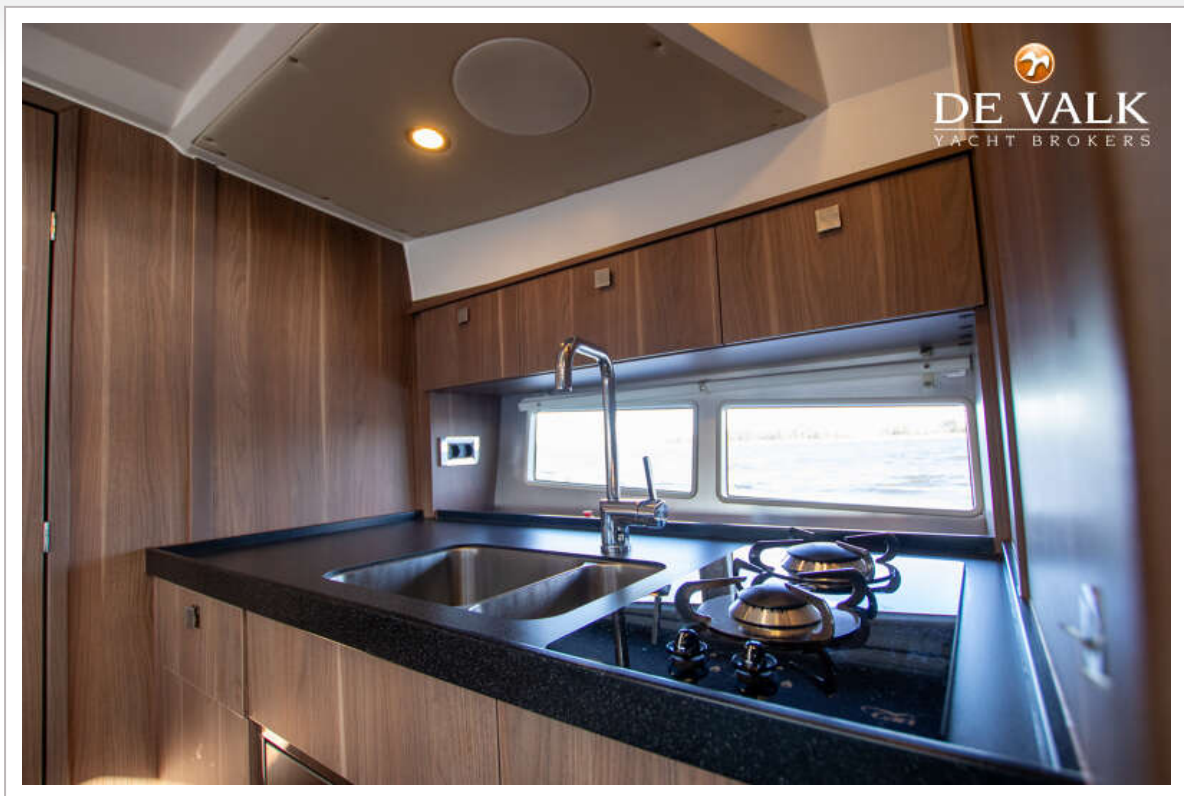
SEALINE S330



SEALINE S330

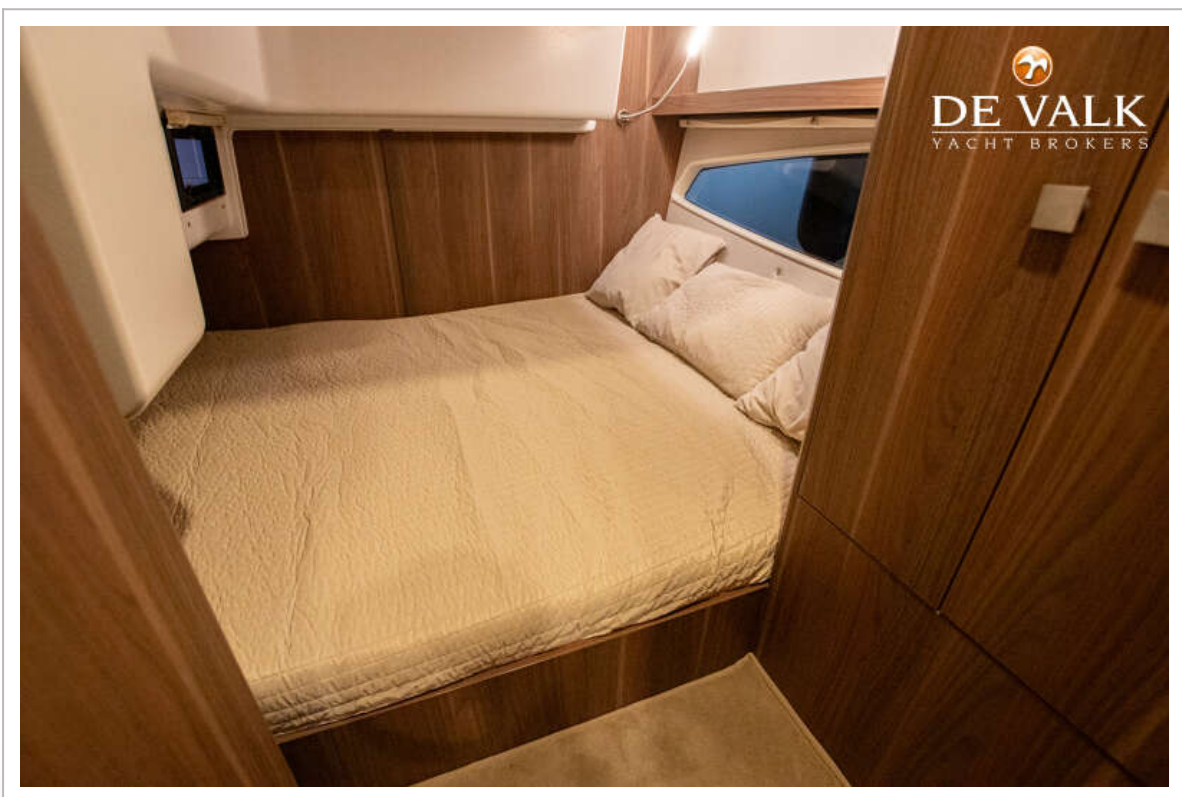
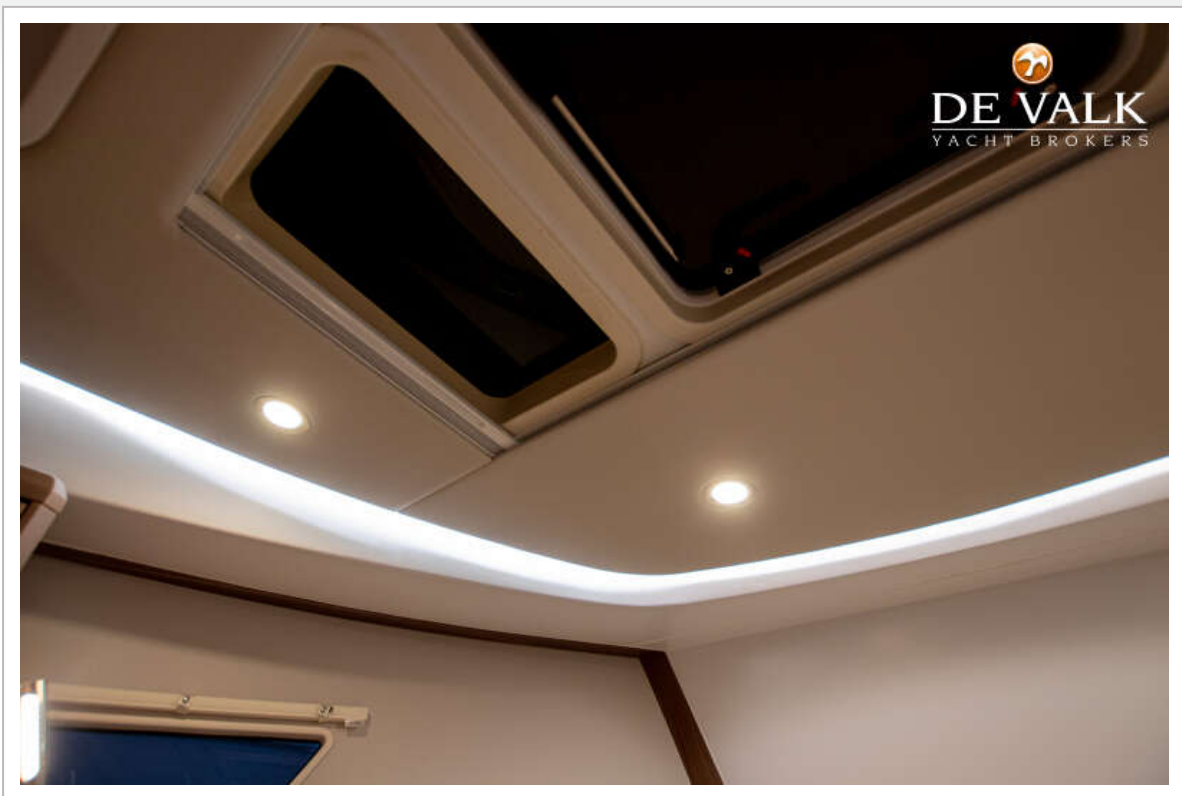


SEALINE S330

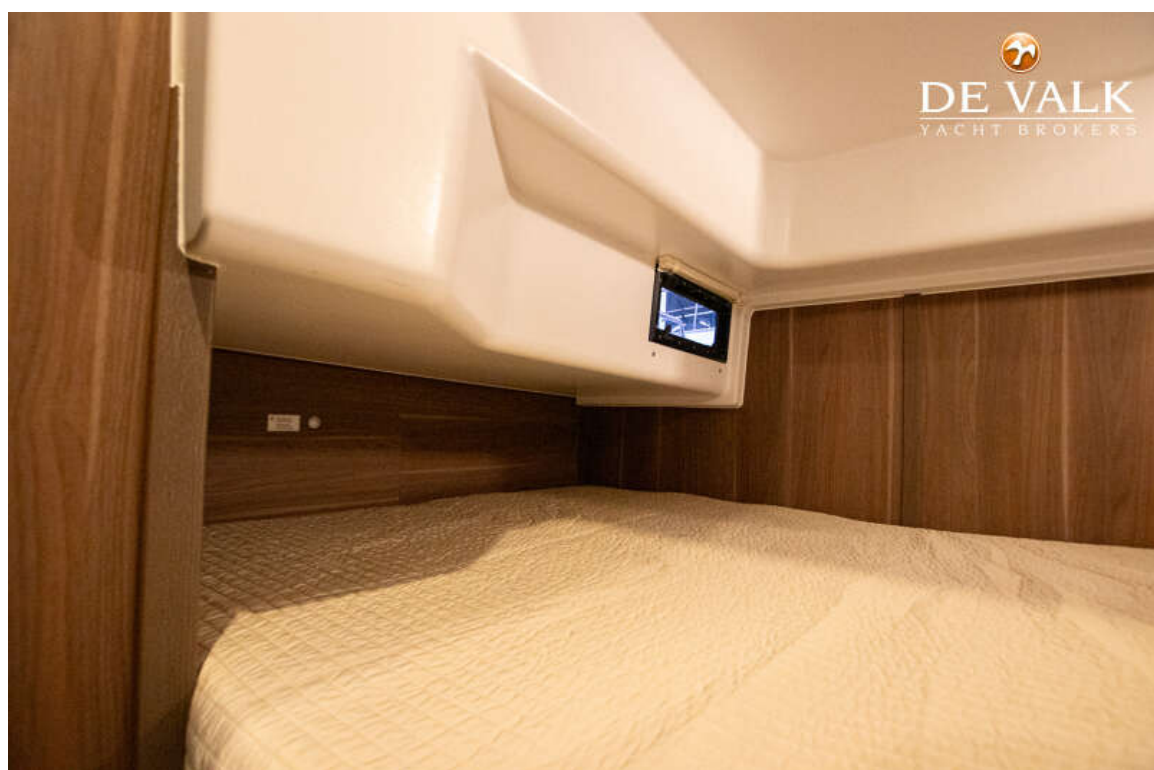


SEALINE S330

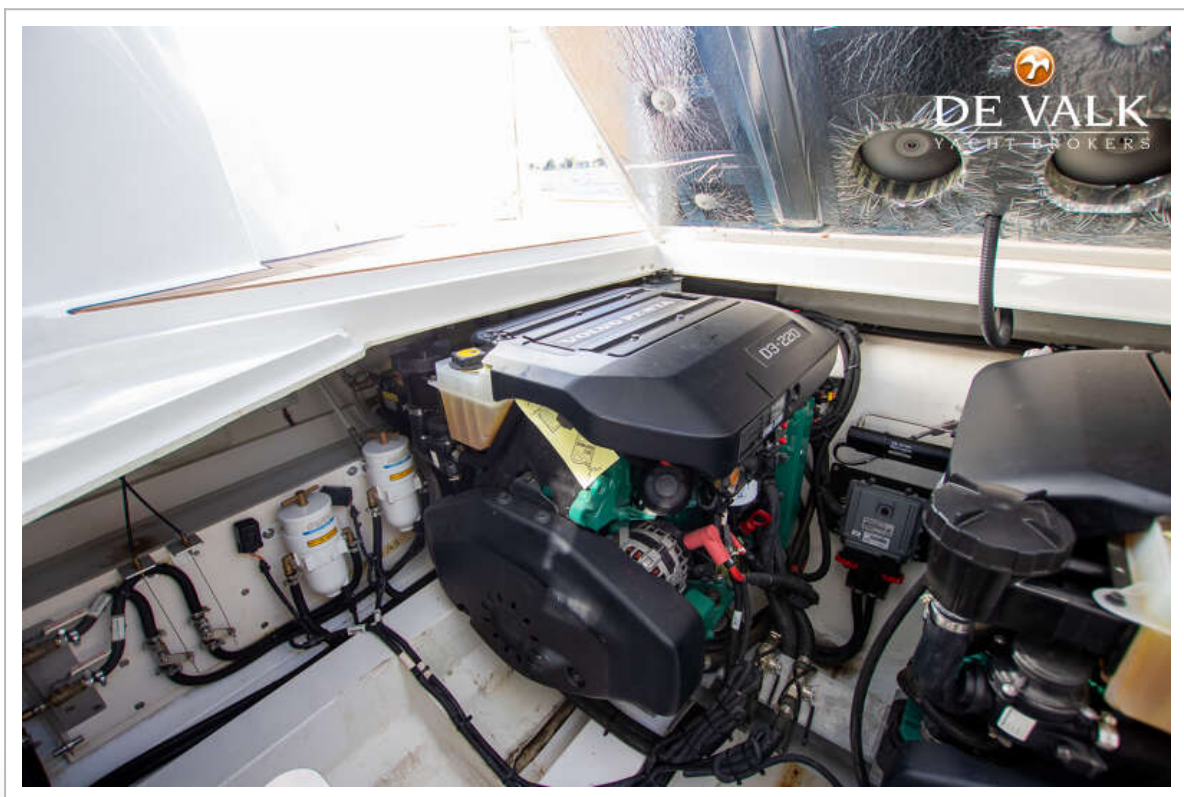




SEALINE S330



SEALINE S330



SEALINE S330



