



DE VALK  
YACHT BROKERS



## CRANCHI Z35



DE VALK  
YACHT BROKERS

# CRANCHI Z35

## BROKER'S COMMENTS

Now for sale: a fully equipped Cranchi Z35 with a chic brown metallic color. This fast motor yacht features two powerful Volvo Penta engines and a Side Power bow thruster, making the boat easy to maneuver. The vessel is also richly equipped with navigation equipment and everything can be controlled from the steering position. The interior is beautifully finished in a light color and two cabins with spacious double beds. The open cockpit is very spacious and extended with a large swimming platform. An ideal boat for vacations and day trips. From now on to view in Loosdrecht!

*Sjoerd Paddenburg*

## SPECIFICATIONS

<b>Dimensions</b>	11.70 x 3.49 x 2,85 / 1 (m)	<b>Builder</b>	CANTIERE NAUTICO CRANCHI S.p.A.
<b>Built</b>	2018	<b>Cabins</b>	2
<b>Material</b>	GRP	<b>Berths</b>	6
<b>Engine(s)</b>	2 x Volvo Penta D4-260 diesel	<b>Hp/Kw</b>	2 x 260 (hp), 191.36 (kw)
<b>Asking price</b>	€ 299.500 (VAT Paid)	<b>Lying</b>	at sales office

## CONTACT

<b>Sales office</b>	De Valk Loosdrecht	<b>Telephone</b>	+31 35 582 90 30
<b>Address</b>	't Breukeleveense Meentje 6 1231 LM Loosdrecht / Wijdemeren The Netherlands	<b>E-mail</b>	loosdrecht@devalk.nl

## DISCLAIMER

These particulars are given in good faith as supplied but cannot be guaranteed.



## GENERAL

<b>Model</b>	CRANCHI Z35
<b>Type</b>	motor yacht
<b>LOA (m)</b>	11,70
<b>Beam (m)</b>	3,49
<b>Draft (m)</b>	1,00
<b>Draft min (m)</b>	2,85
<b>Headroom (m)</b>	2,00
<b>Year built</b>	2018
<b>Builder</b>	CANTIERE NAUTICO CRANCHI S.p.A.
<b>Country</b>	Italy
<b>Designer</b>	Centro Studi Ricerche Cranchi
<b>Displacement (t)</b>	7,3
<b>CE norm</b>	B
<b>Hull material</b>	GRP
<b>Hull colour</b>	brown
<b>Hull shape</b>	deep-V
<b>Superstructure material</b>	GRP
<b>Rubbing strake</b>	stainless steel
<b>Deck material</b>	GRP
<b>Deck finish</b>	non-skid moulded in
<b>Superstructure deck finish</b>	non-skid moulded in
<b>Cockpit deck finish</b>	teak
<b>Window frame</b>	stainless steel
<b>Window material</b>	perspex
<b>Portholes</b>	stainless steel 4x
<b>Radar arch</b>	collapsible Electric
<b>Fuel tank (litre)</b>	stainless steel 600
<b>Level indicator (fuel tank)</b>	yes
<b>Freshwater tank (litre)</b>	190
<b>Level indicator (freshwater)</b>	yes



<b>Blackwater tank (litre)</b>	70
<b>Level indicator (blackwater)</b>	yes
<b>Blackwater tank extraction</b>	deck extraction + pump
<b>Wheel steering</b>	hydraulic
<b>Outside helm position</b>	hydraulic

## ACCOMMODATION

<b>Cabins</b>	2
<b>Berths</b>	6
<b>Interior</b>	oak White Washed
<b>Floor</b>	woodprint PVC
<b>Open cockpit</b>	yes
<b>Saloon</b>	yes
<b>Headroom saloon (m)</b>	2,00
<b>Heating</b>	diesel ducted hot air Air-tronic
<b>Dinette</b>	yes
<b>Sliding door to cockpit</b>	yes
<b>Galley</b>	yes
<b>Countertop</b>	plastic
<b>Sink</b>	stainless steel
<b>Cooker</b>	calor gas 2 Burners
<b>Oven</b>	yes
<b>Fridge</b>	2x
<b>Freezer</b>	In fridge
<b>Hot water system</b>	220V + engine Boiler
<b>Water pressure system</b>	electrical
<b>Coffee maker</b>	Nespresso
<b>Owners cabin</b>	double bed
<b>Wardrobe</b>	hanging and shelves
<b>Bathroom</b>	shared
<b>Toilet</b>	shared



Toilet system	electric
Wash basin	in the bathroom
Shower	shared
Guest cabin 1	twin single To convert in double bed
Wardrobe	hanging and drawers
Extra info	Outside kitchen with grill

## MACHINERY

No of engines	2
Make	Volvo Penta
Type	D4-260
HP	260
kW	191.36
Fuel	diesel
Engine hours	670
Engine cooling system	freshwater heat exchanger
Drive	stern
Engine controls	electrical
Gearbox	hydraulic
Bowthruster	electric Side power
Propeller type	fixed
Electrical installation	12V/230V
Start battery	yes
Service battery	2x Varta 12V / 230 Ah
Battery monitor	yes
Battery charger	Mastervolt 12V/75-3
Inverter	Mastervolt 12V/1500W
Diode battery combiners	yes
Shorepower	with cable

## NAVIGATION



Compass	Ritchie
Electric compass	On autopilot
Depth sounder/log	Garmin
VHF	Garmin GHS 11i
Autopilot	Garmin
Rudder angle indicator	yes
Radar	yes
Radar/GPS/plotter	Garmin GPSmap 7410
AIS receiver	yes
Navigation lights	yes

## EQUIPMENT

Sprayhood	yes
Cockpit cover	yes
Cockpit cushions	yes
Cockpit table	yes
Bathing platform	yes
Boarding ladder	stainless steel
Transom door	yes
Deck shower	yes
Anchor	yes
Windlass	electrical Lofrans with remote control
Sea railing	stainless steel
Wiper	yes
Horn	electric
TV	3x Samsung
Radio	Fusion MS-MRX300
Sub-woofer	yes
Cockpit speakers	Fusion
Speakers in salon	Fusion
Extra info	yes



Extra info

yes



# CRANCHI Z35





# CRANCHI Z35



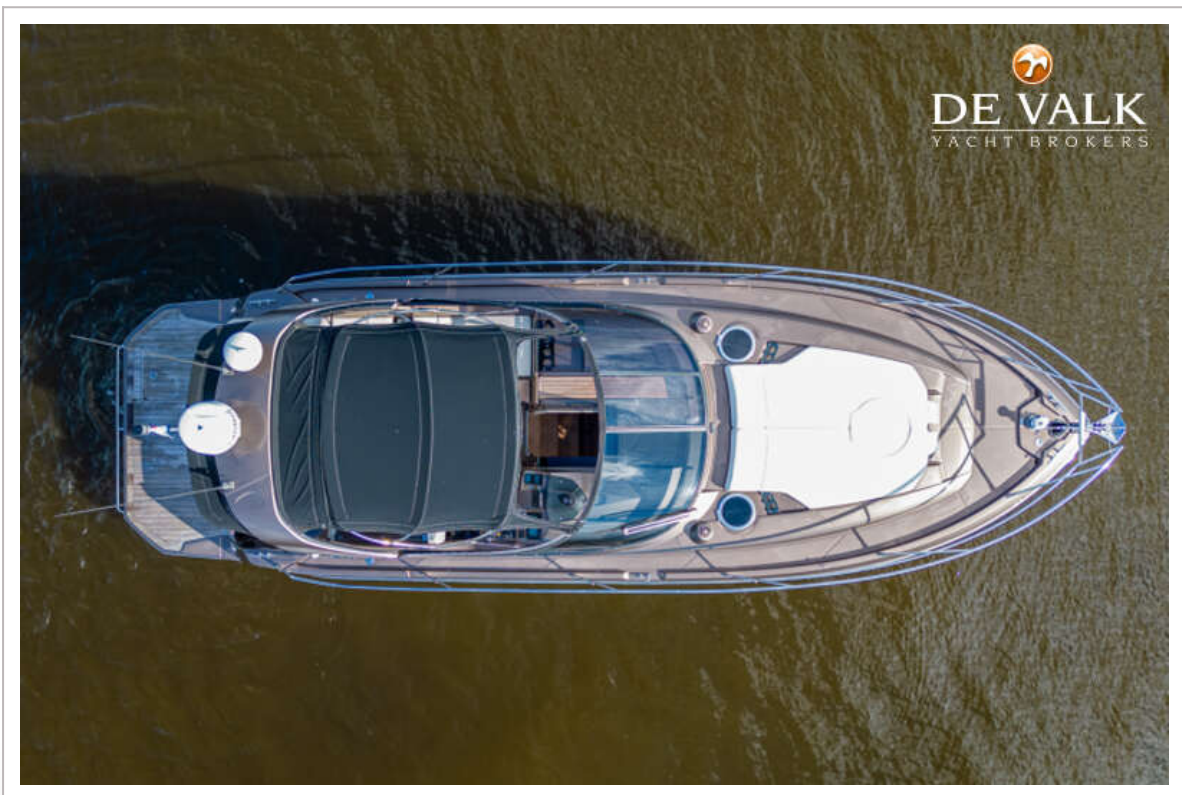
# CRANCHI Z35



# CRANCHI Z35



# CRANCHI Z35



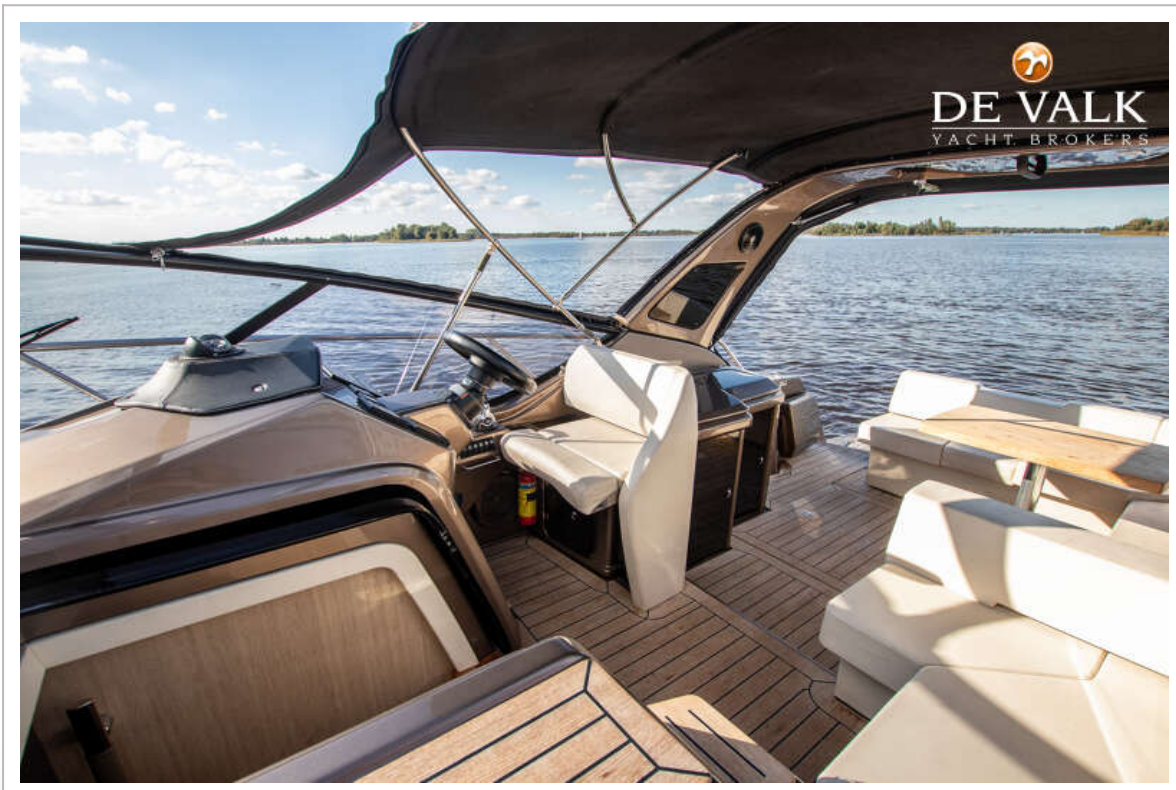
# CRANCHI Z35



# CRANCHI Z35



# CRANCHI Z35



# CRANCHI Z35

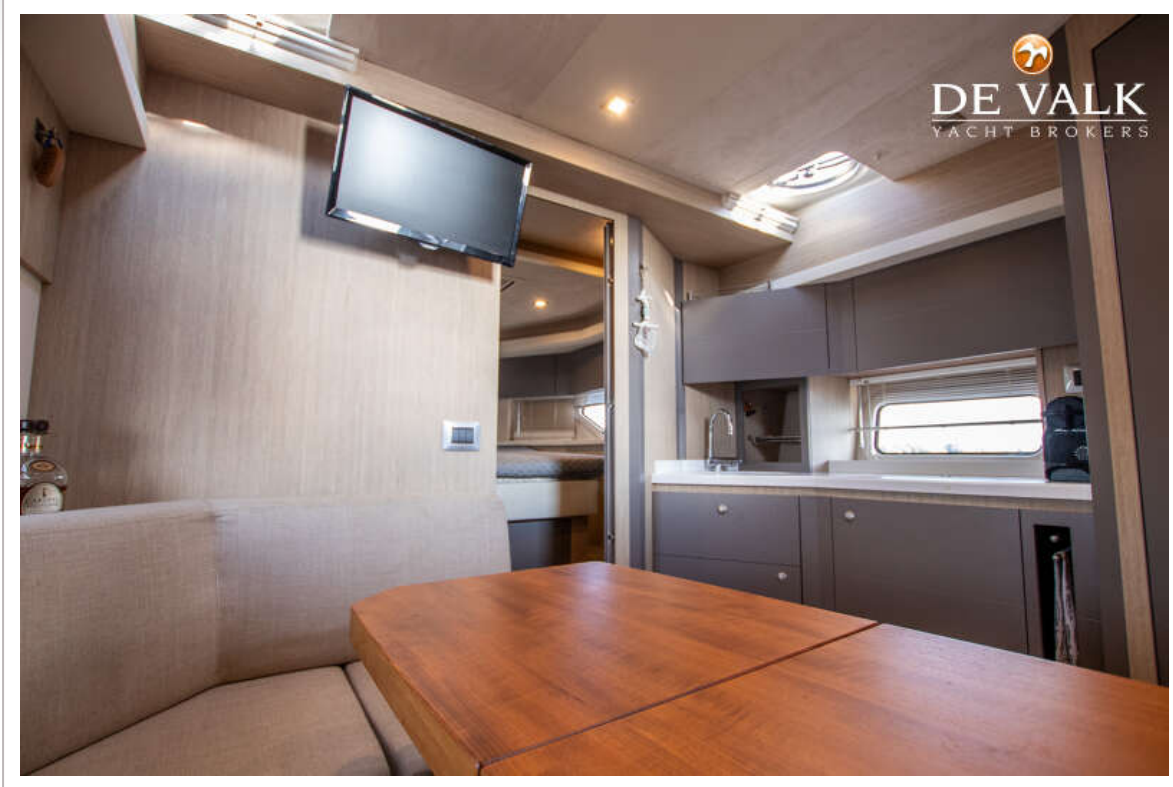




# CRANCHI Z35



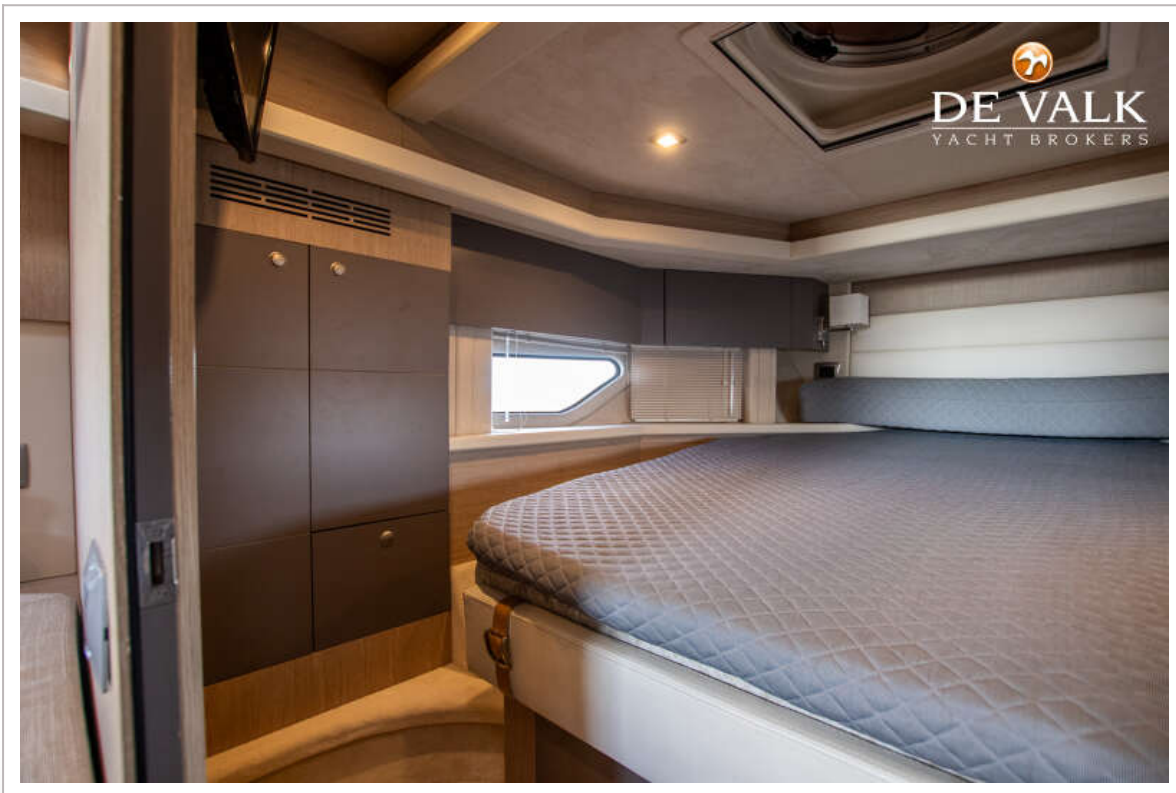
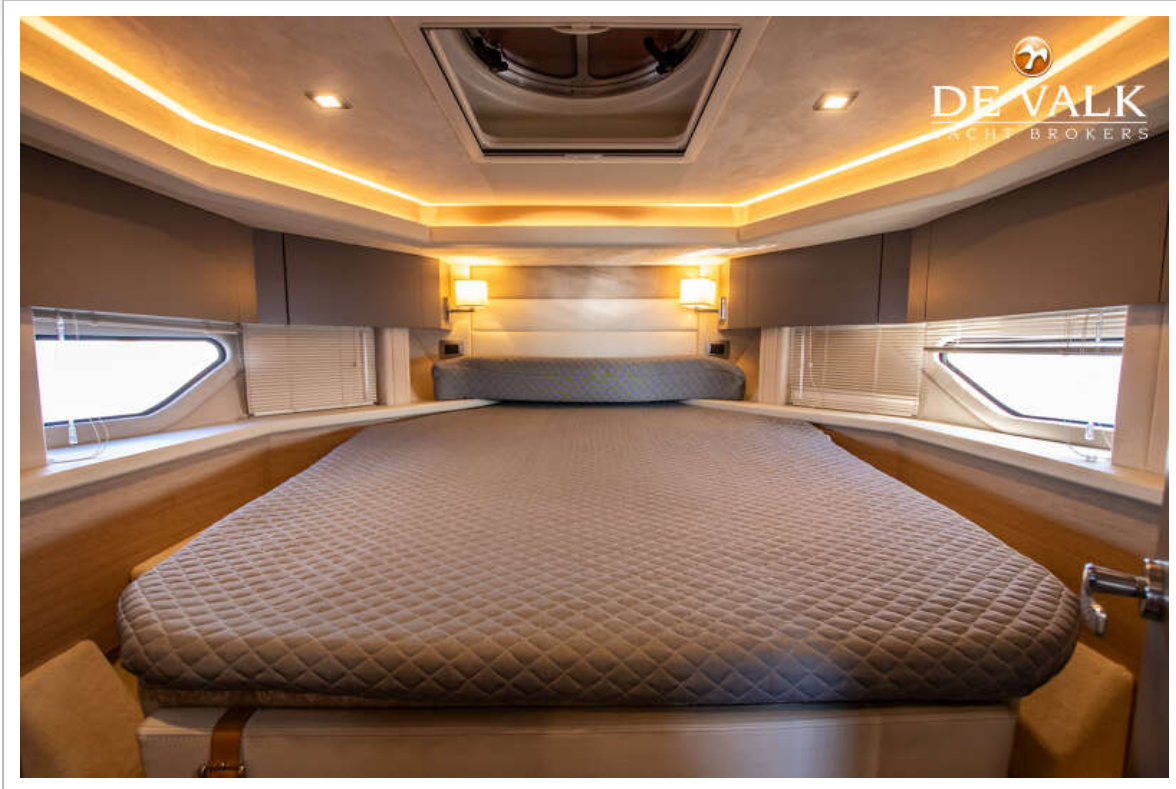
# CRANCHI Z35



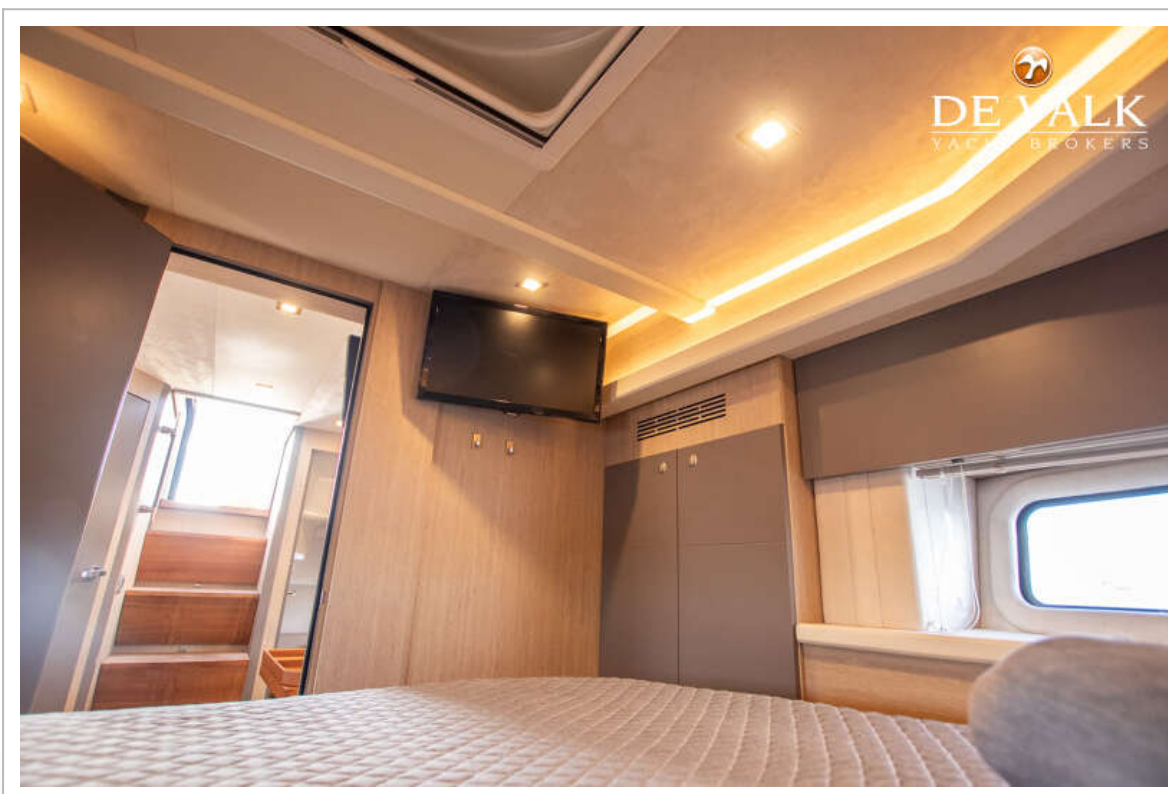
# CRANCHI Z35



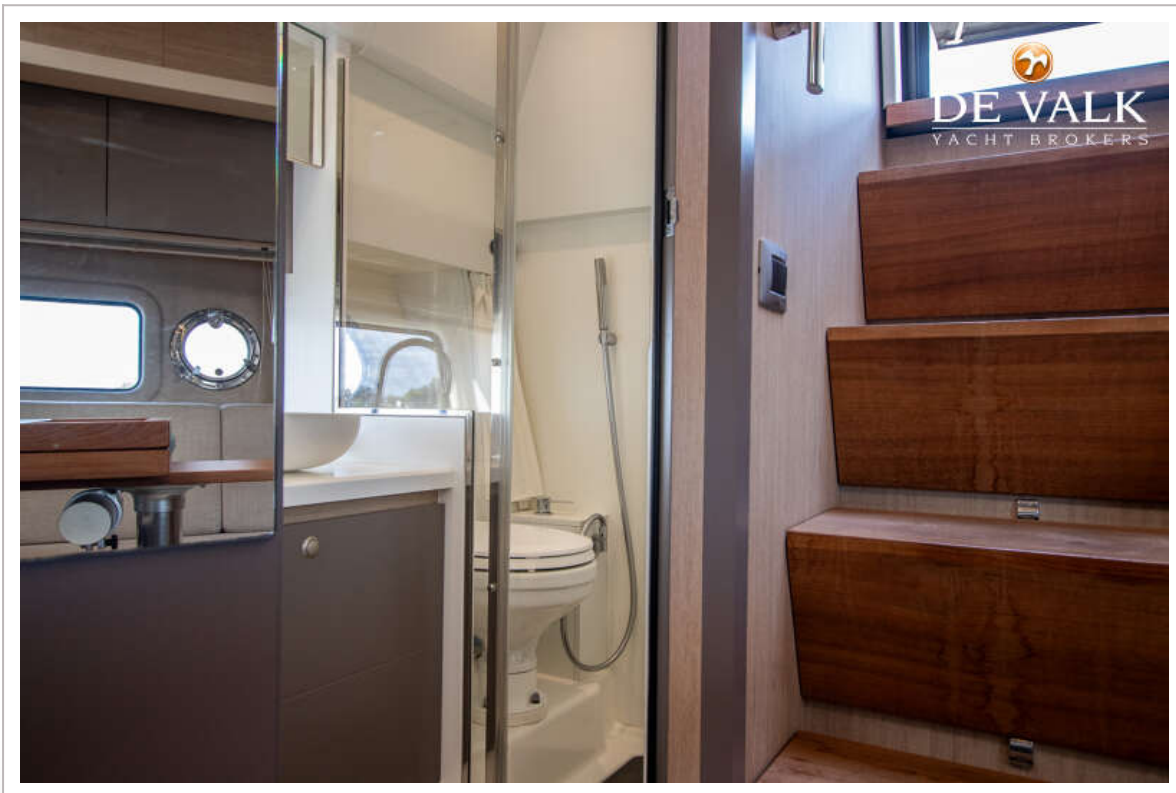
# CRANCHI Z35



# CRANCHI Z35



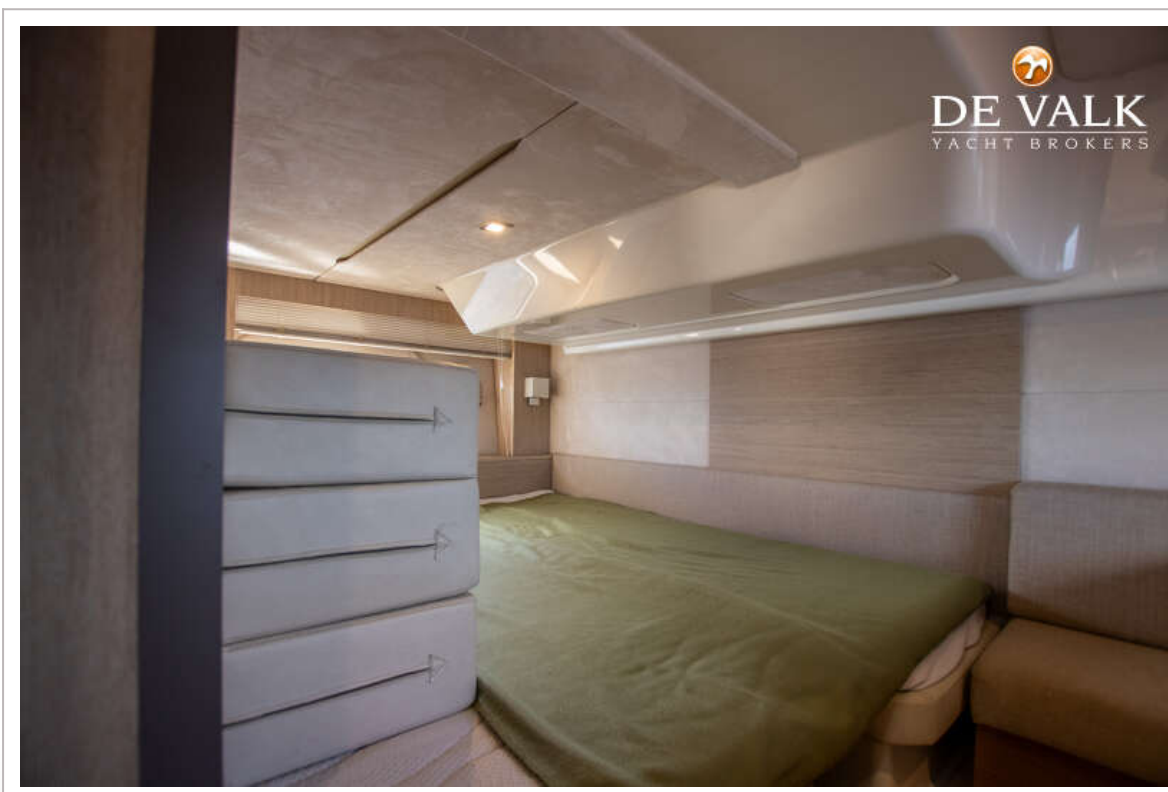
# CRANCHI Z35



# CRANCHI Z35

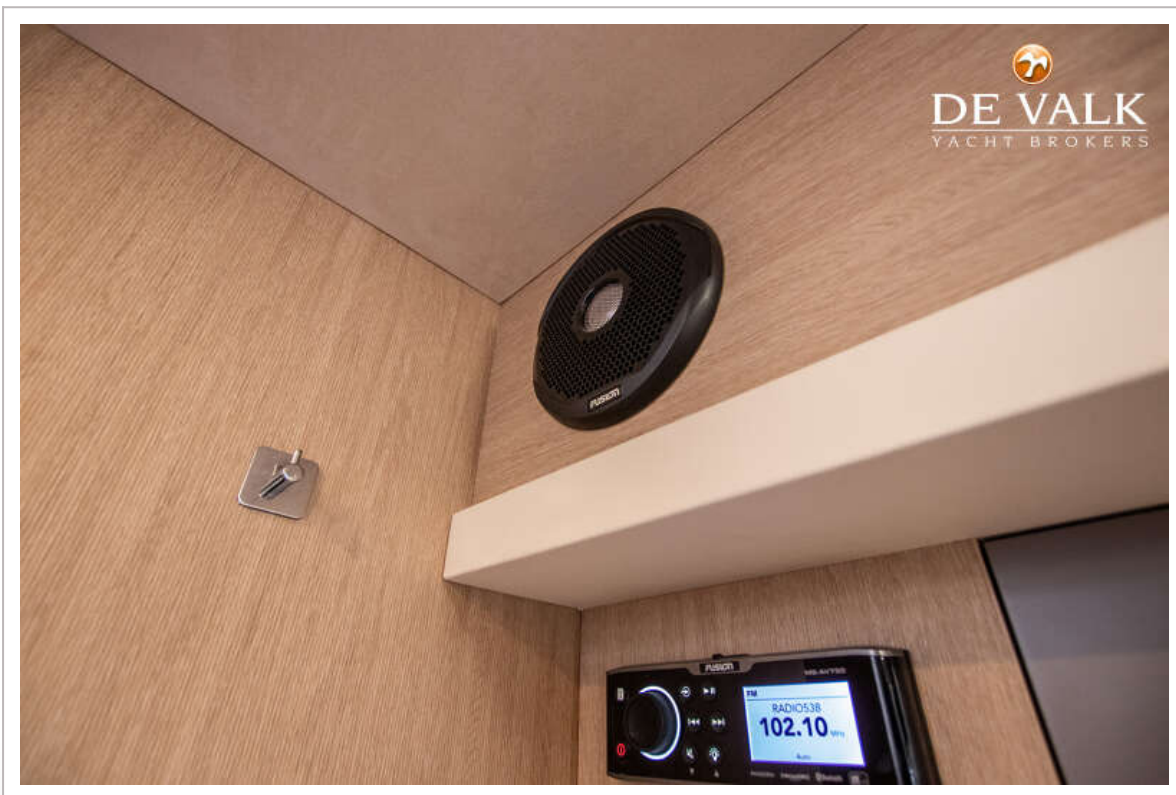
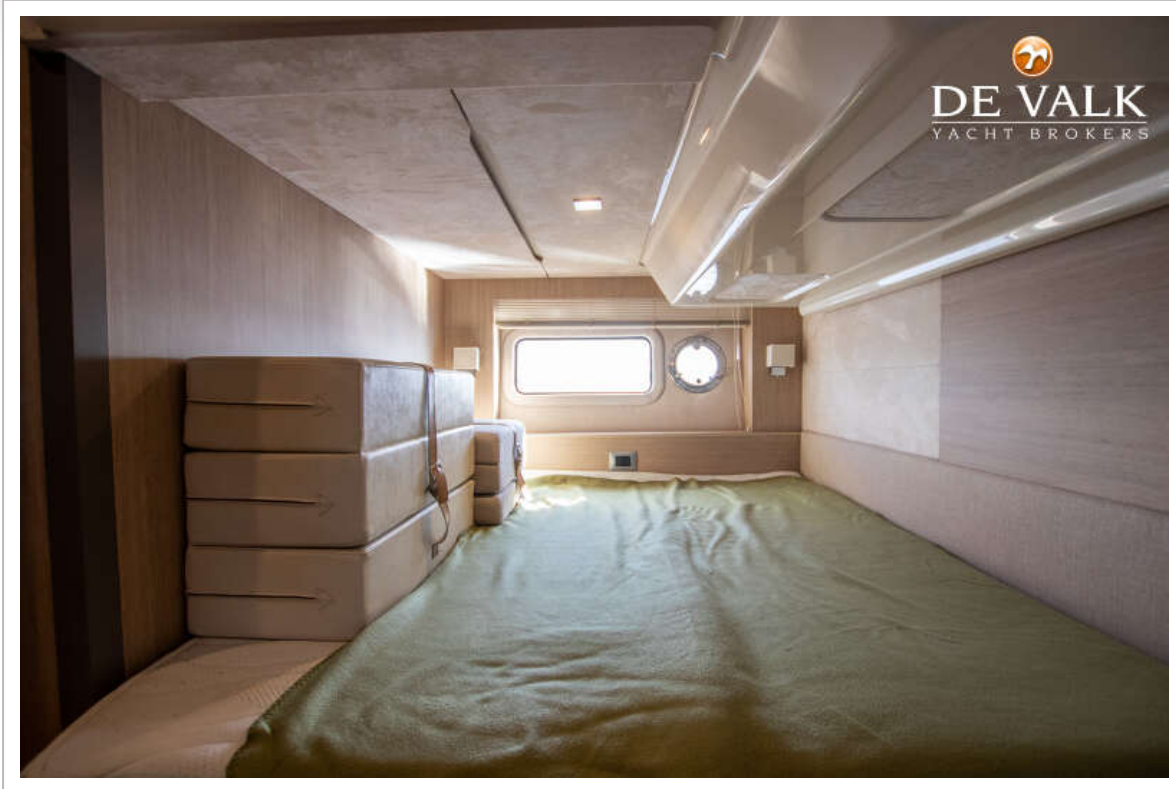


# CRANCHI Z35

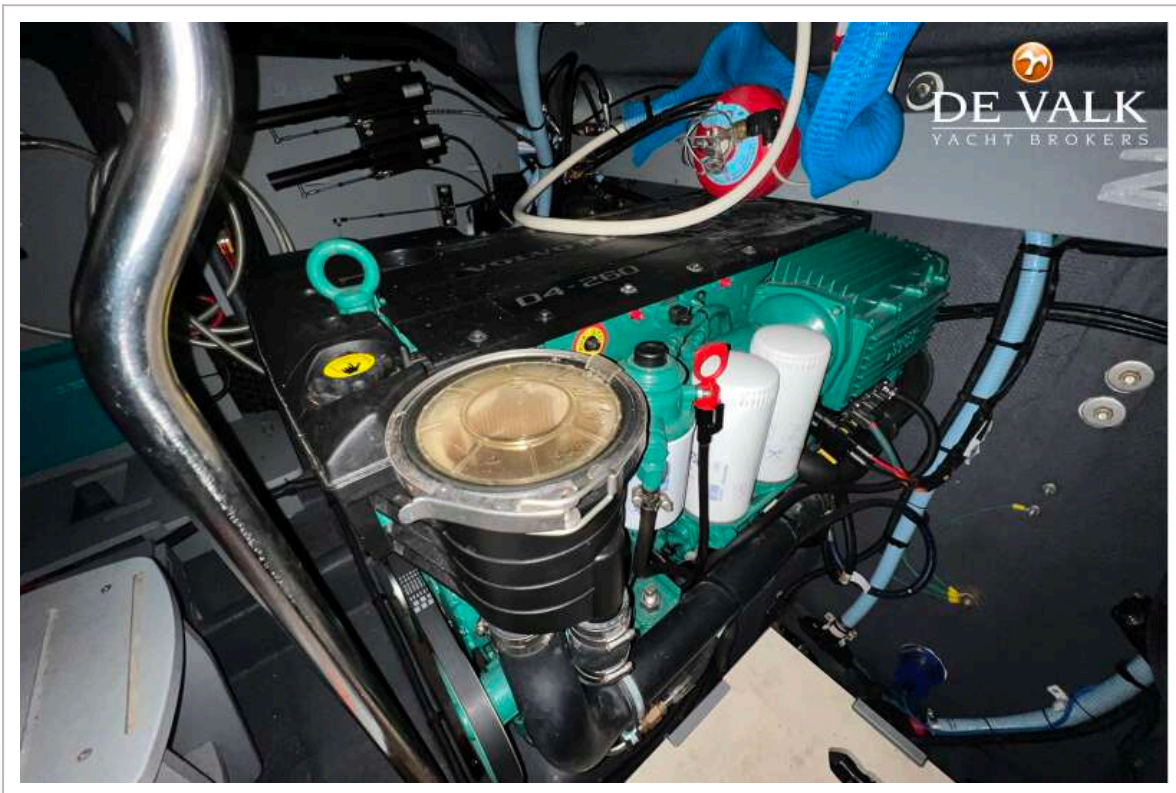




# CRANCHI Z35



# CRANCHI Z35



# CRANCHI Z35



# CRANCHI Z35

