



CENTURION 59



DE VALK
YACHT BROKERS

BROKER'S COMMENTS

The Centurion 59 is the fabulous long distance world cruiser from the reknown Wauquiez yard. The Centurion 59 " Libertas" has been constantly maintained and upgraded by her long time experienced owner. Libertas is a beautiful example of this popular Ed Dubois design and she is fully equipped for short handed sailing. The Centurion 59 is built In the strong and traditional style of building powerful cruising yachts with plenty of space. Her double cockpit configuration is ideal to entertain your guests while still sailing strong from the well protected aft sailing cockpit.

Hans Visser

SPECIFICATIONS

Dimensions	18.00 x 5.05 x 2.40 (m)	Builder	Chantier Wauquiez
Built	1991	Cabins	4
Material	GRP	Berths	8
Engine(s)	1 x Nanni T4 diesel	Hp/Kw	165.00 (hp), 121.28 (kw)
Asking price	€ 199.000 (VAT Paid)	Lying	elsewhere / not at sales office

CONTACT

Sales office	De Valk Hindeloopen	Telephone	+31 514 52 40 00
Address	Oosterstrand 1 8713 JS Hindeloopen The Netherlands	E-mail	hindeloopen@devalk.nl

DISCLAIMER

These particulars are given in good faith as supplied but cannot be guaranteed.



GENERAL

Model	CENTURION 59
Type	sailing yacht
LOA (m)	18,00
Beam (m)	5,05
Draft (m)	2,40
Air draft (m)	26,00
Headroom (m)	2,10
Year built	1991
Launched	1991
Builder	Chantier Wauquiez
Country	France
Designer	Ed Dubois
Displacement (t)	26
Ballast (tonnes)	lead 8
CE norm	NA
Hull material	GRP
Hull colour	white
Hull shape	round-bilged
Keel type	centreboard
Superstructure material	GRP
Deck material	GRP
Deck finish	teak
Superstructure deck finish	teak
Cockpit deck finish	teak
Antifouling (year)	2020
Dorades	stainless steel 5 x
Window frame	aluminium 3 fixed aluminium frames windows on each side
Window material	tempered glass
Deckhatch	10 Goyot opening deck hatches
Portholes	aluminium 4 Goyot opening portholes



Fuel tank (litre)	aluminium 2 x 220 L. for 440 L Total
Level indicator (fuel tank)	yes
Freshwater tank (litre)	aluminium 6 x 120 L for 720 L otal
Wheel steering	cable steering
Outside helm position	cable steering
Emergency tiller	yes
Extra info	Large sliding deckhatch

ACCOMMODATION

Cabins	4
Berths	8
Crew cabin	1
Crew berths	2
Interior	teak Light Alcantara headlinings, blue Alcantara upholstery
Layout	Private
Floor	teak and holly
Open cockpit	yes
Air-conditioning	reverse cycle airco 2 x
Navigation center	yes
Chart table	yes
Galley	yes
Countertop	corian
Sink	stainless steel Double
Cooker	calor gas 4 burner
Oven	yes
Fridge	With freezer compartment (frigoboat) + 2nd 24 V
Freezer	Frigoboat + 2nd 24 V
Hot water system	220V + engine Boiler
Water pressure system	
Manual and/or foot pump	yes
Kettle	yes



Crockery	yes
Owners cabin	double bed
Bed length (m)	2,00
Wardrobe	hanging/drawers/shelves
Bathroom	en suite
Toilet	en suite
Toilet system	electric
Wash basin	in the bathroom
Shower	en suite
Guest cabin 1	double bed
Bed length (m)	2,00
Wardrobe	hanging/drawers/shelves
Bathroom	en suite
Toilet	en suite
Toilet system	electric
Wash basin	in the bathroom
Shower	en suite
Guest cabin 2	double bed
Bed length (m)	2,00
Wardrobe	hanging and shelves
Bathroom	en suite
Toilet	en suite
Toilet system	electric
Wash basin	in the bathroom
Shower	en suite
Guest cabin 3	bunk bed
Bed length (m)	2
Wardrobe	hanging/drawers/shelves
Bathroom	shared
Toilet	en suite
Toilet system	electric
Wash basin	in the bathroom



Shower shared

MACHINERY

No of engines	1
Make	Nanni
Type	T4
HP	165
kW	121.28
Fuel	diesel
Year installed	2012
Maximum speed (kn)	10
Cruising speed (kn)	8
Consumption (l/hr)	3
Range (nm)	500
Engine hours	750
Engine cooling system	freshwater heat exchanger
Drive	shaft
Shaft seal	yes
Engine controls	bowden cable
Gearbox	mechanical
Bowthruster	Max Power CT225 (20 hp) with battery
Propeller type	folding Maxprop easy
Propeller blades	4 x 24*40
Propeller shaft material	stainless steel
Shaft lubrication	grease
Manual bilge pump	yes
Electric bilge pump	2 x with auto switch
Electrical installation	12 & 24 V DC and 240 V AC
Generator	wet exhaust Panda 6kva in soundshield box
Running hours generator	450 hours since rebuilt in 2018
Start battery	2 x AGM avolio 100 AH 12 V



Service battery	6 x 12 V 185 AH etache marine for 555 AH 24 V.
Generator battery	2 x Optima 12 V 50 AH
Bowthruster battery	2 x Optima 12 V 50 AH
Battery monitor	yes
Battery charger	Mastervolt 24V 100 AH & Victron (2018)
Wind generator	Ecopower 9W 24V 350 W.
Diode battery combiners	yes
Shorepower	with cable
Watermaker	35 L/h (2020)
Extra info	Engineroom ventilator, water separation filter

NAVIGATION

Compass	Plastimo
Electric compass	yes
Depth sounder	B & G Hydra 2000
Log	B & G
Windset	B & G 2017
Repeater	yes
VHF	ICOM IC M605 + remote in cockpit
VHF handheld	yes
Autopilot	Com Nav Marine dual controls
Rudder angle indicator	yes
Radar	Koden 32 nm radar (2005)
GPS	Furuno GP31
Plotter/GPS	Cmap raymarine inside & Garmin outside
Weather receiver	Furuno weatherfax
Navtex	Furuno
Electronic chart(s)	yes
AIS transponder	Simrad
Radio receiver	Nasa HF-150 SSB receiver & ICOM IC M700 SSB tranceiver
Transmitter	KVH Tracphone 25 Inmarsat Mini M satellite telephone



EPIRB	yes
Navigation lights	yes

EQUIPMENT

Sprayhood with grab rail	yes
Bimini	Collapsable
Sun awning	2006 covering both cockpits and part of the cabin
Cockpit cushions	yes
Cockpit table	Doubles as grating in front cockpit
Bathing platform	Electric Hydraulic opening stern (rebuilt 2020)
Boarding ladder	aluminum
Transom door	yes
Deck shower	yes
Anchor	Fortress
Anchor chain	100 M. high Grade stainless steel
Anchor 2	CQR Plough
Anchor chain	100 M. High Grade stainless steel
Capstan	Quick 24 V electric
Deck wash	yes
Dinghy	inflatable Quicksilver dinghy
Outboard	Mariner 5,5 Hp (rebuilt 2020)
Outboard support	yes
Sea railing	stainless steel
Grab rail (superstructure)	wood
Pushpit	yes
Pulpit	yes
Life raft	container Seasafe 2016
Life raft (pers)	8
Lifejackets	8
Lifebuoy	yes
Danbuoy	yes



Fenders	yes
Mooring lines	yes
Spare parts	yes
Tools	yes
TV	yes
TV receiver	yes
Radio	yes
DVD player	yes
Cockpit speakers	yes
Speakers in salon	yes
Speakers in cabin	yes
Clock - barometer	yes
Fire extinguisher	2 x
Extinguisher in engine room	yes
Extra info	Covers for winches, instruments & pedestal

RIGGING

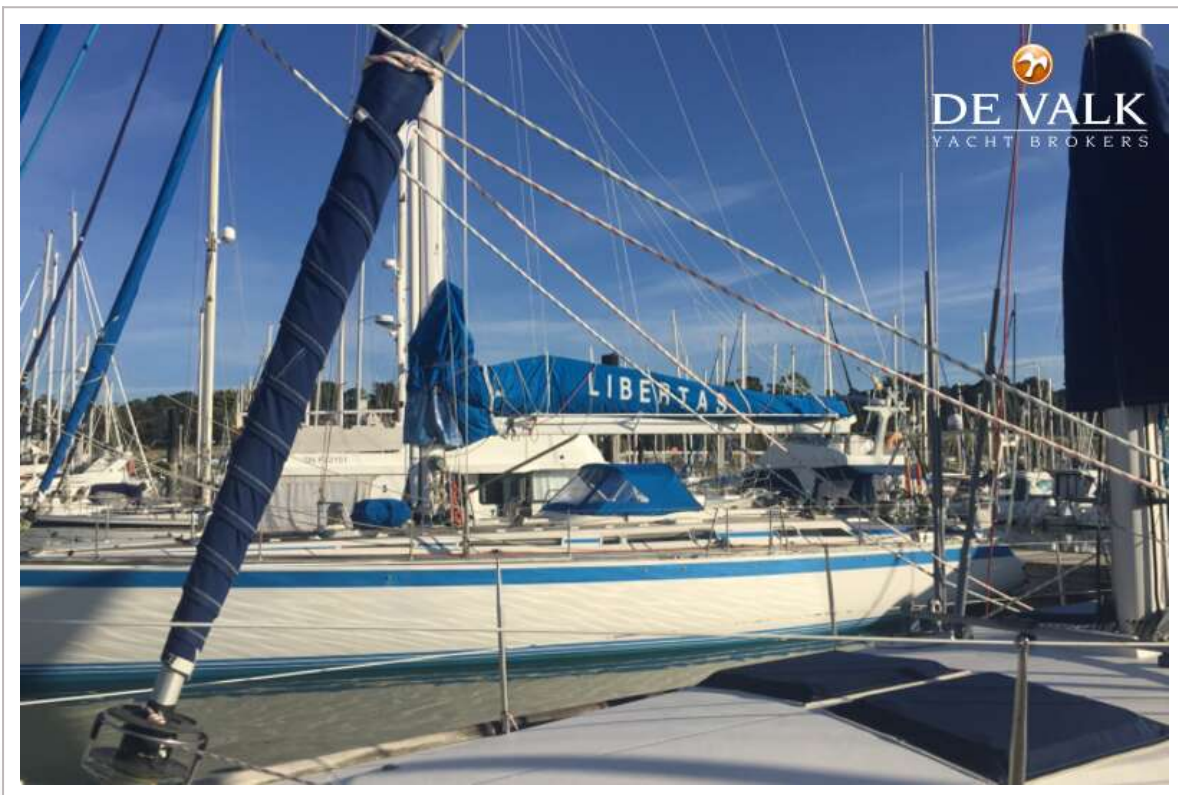
Rigging	sloop
Standing rigging	Rod
Brand mast	Mare Chal
Material mast	aluminium White
Spreaders	3 sets of spreaders
Keel stepped mast	I=23.5m, P=21.4m, J= 6.9m, E= 6.8m.
Mainsail cover	yes
Battcars	Harken
Fully battened mainsail	2017 Lebihan voiles
Cutterstay	Profurl manual furler
Genoa	2019 Le Bihan voiles
Genoa furler	Profurl manual
A-symmetric spi	2004 with snuffer
Staysail furler	Profurl manual



Yankee	2020 Colibri Voiles
Removable innerforestay	yes
Trysail	2002
Stormjib	2002
Backstay adjuster	hydraulic Navtec
Boomvang	hydraulic Navtec
Primary sheet winch	3x Harken/Barbarossa 56-2 2-speed self-tailing mainsheet/travel
Secondary sheet winch	2x Harken 56-2 2-speed self-tailing
Genoa sheetwinches	2x Harken 64-2 2-speed electric hydraulic self-tailing
Halyard winches	2x Harken 56 2-speed ST halyard winches on either side
Spinnaker winch	All winches & tracks overhauled in 2017
Multifunctional winches	halyard/sheet winches 1xHarken electric 56-2 for the mainsail
Spi-pole	Stooed against the mast
Extra info	Navtec Hydraulic babystay all rebuilt 2020
Extra info	New Boom 2012 with inboom storage for main



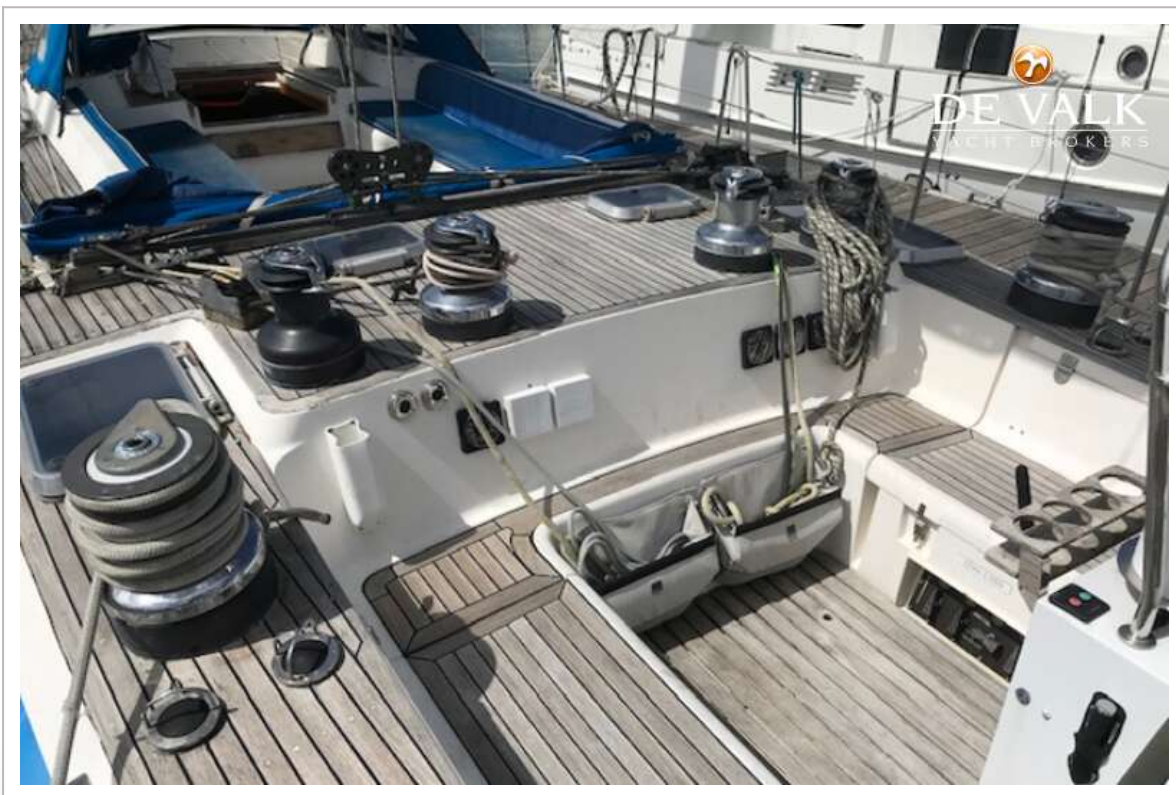
CENTURION 59



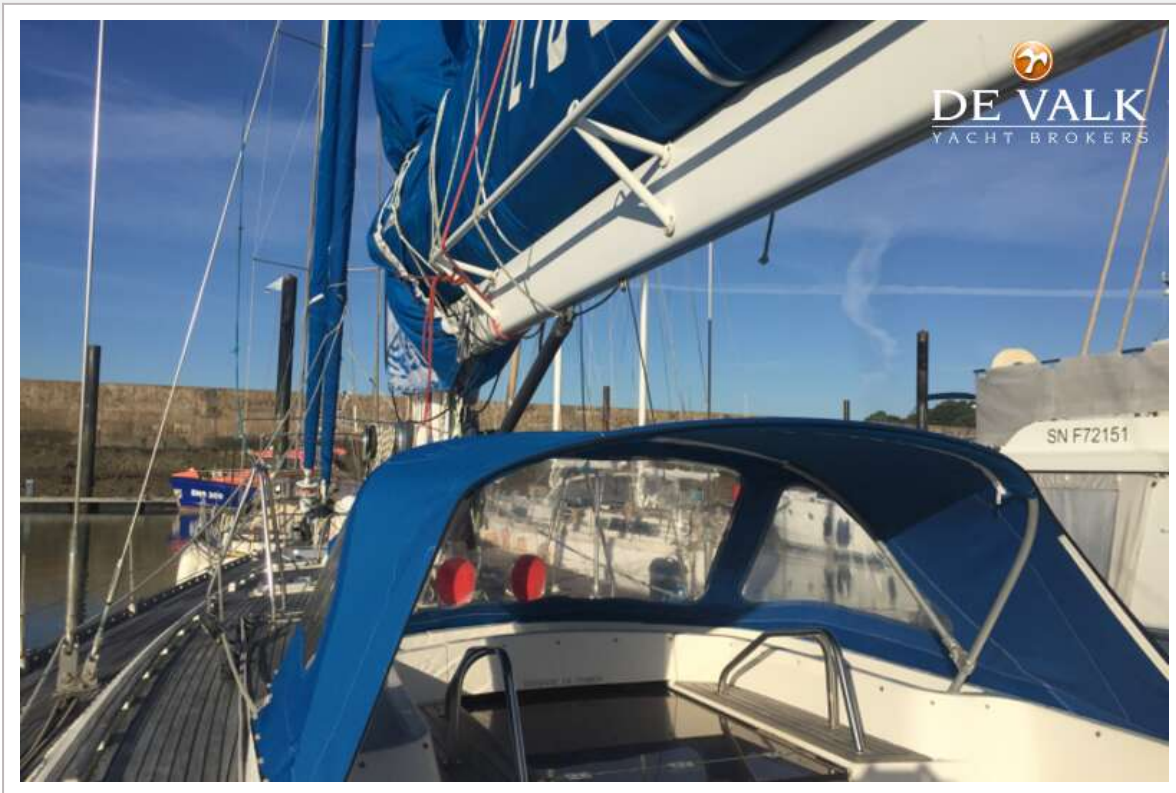
CENTURION 59



CENTURION 59



CENTURION 59



CENTURION 59





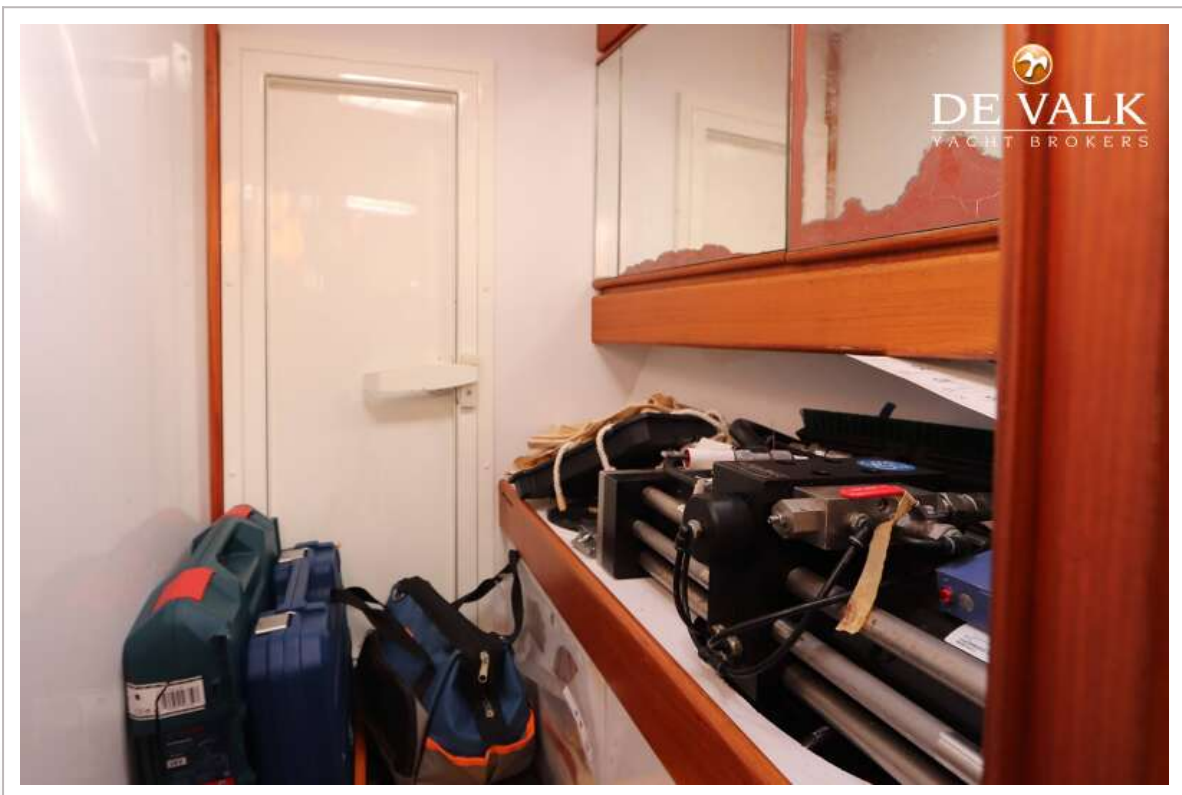
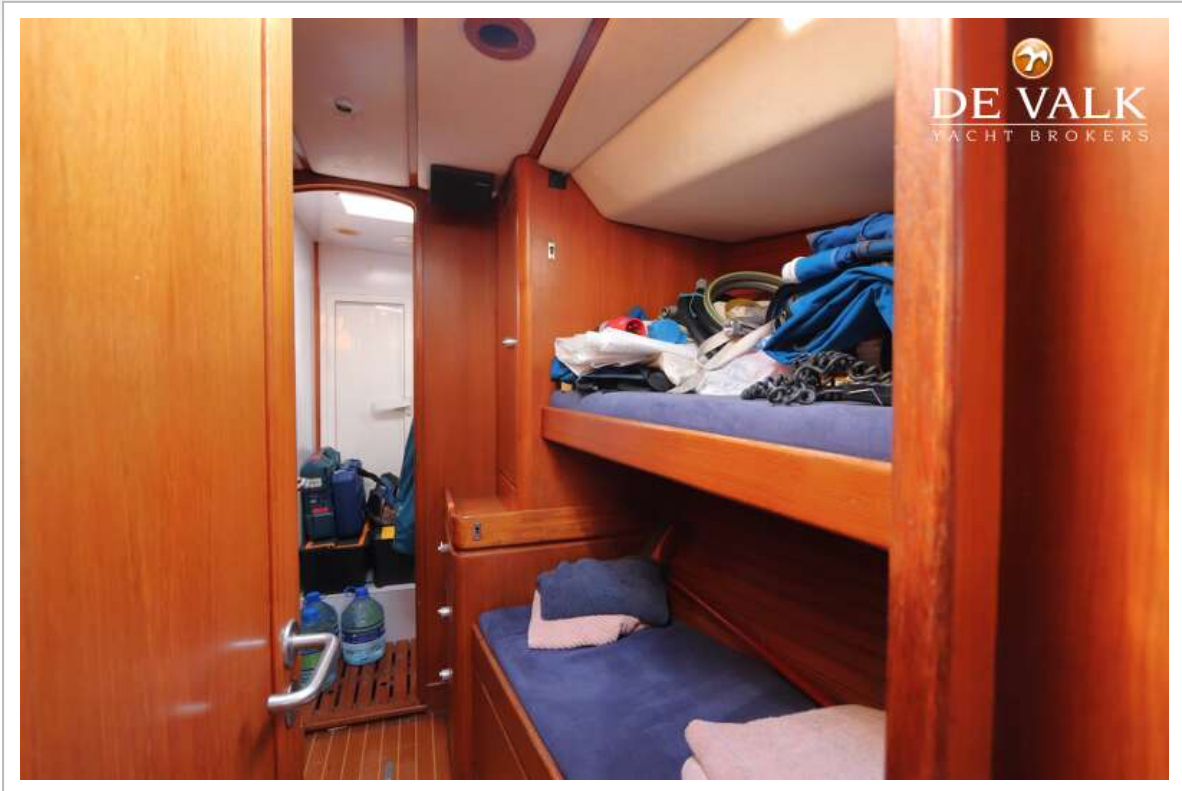
CENTURION 59



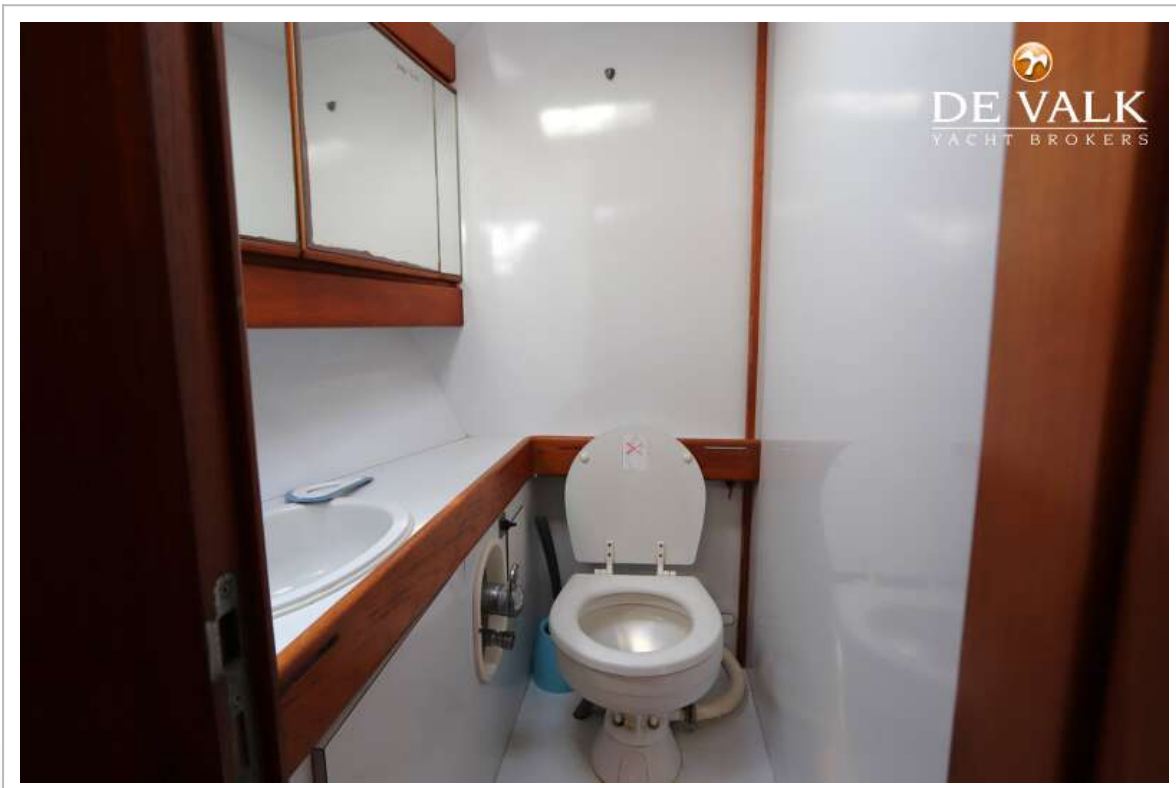
CENTURION 59



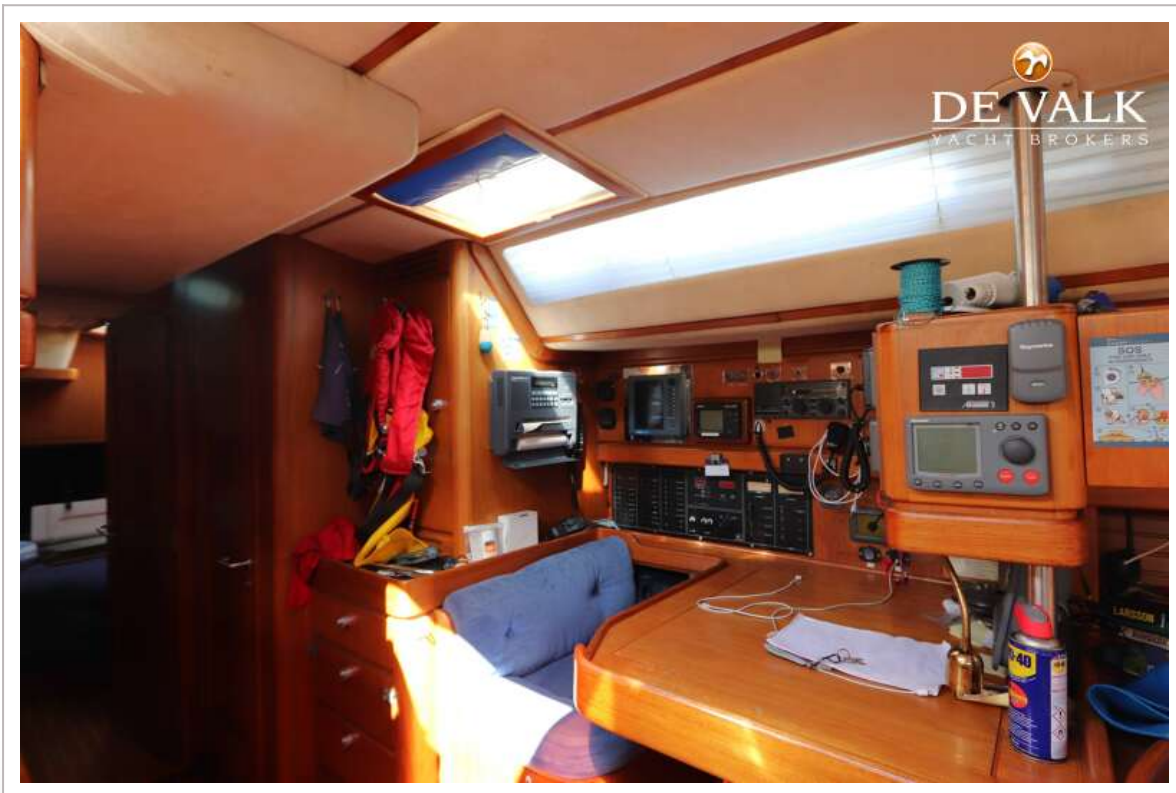
CENTURION 59



CENTURION 59



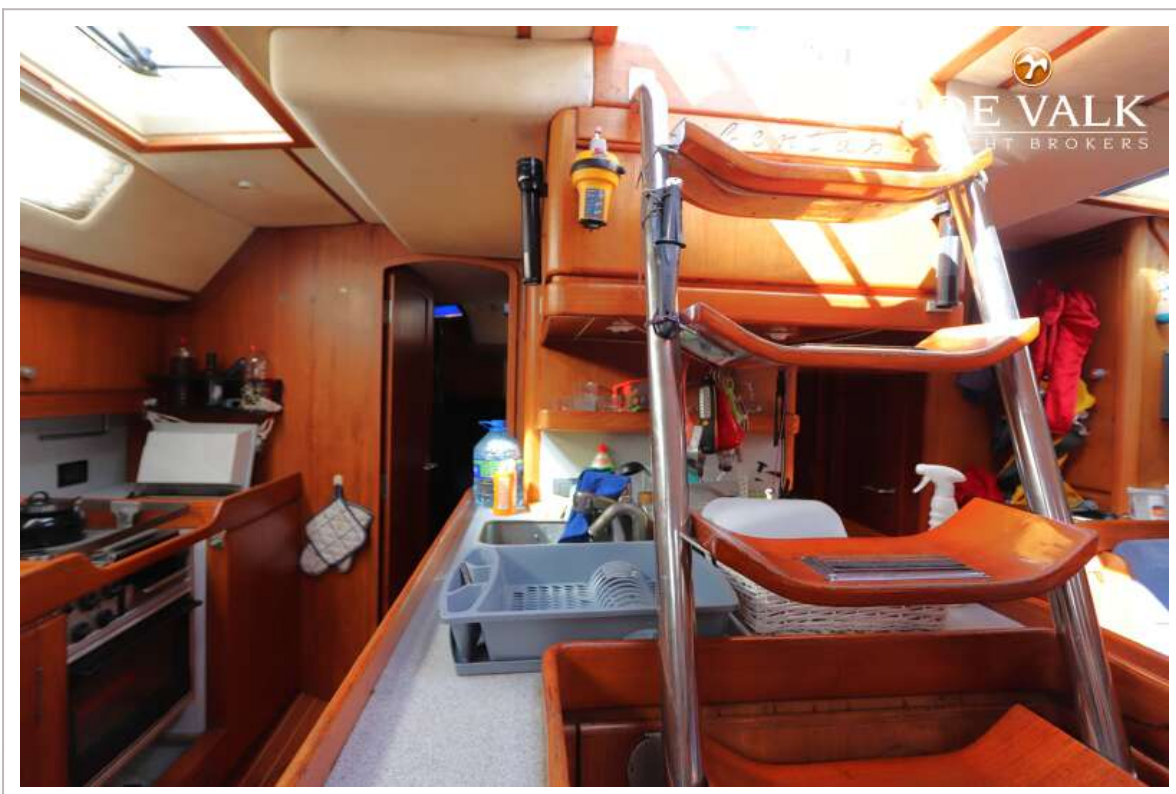
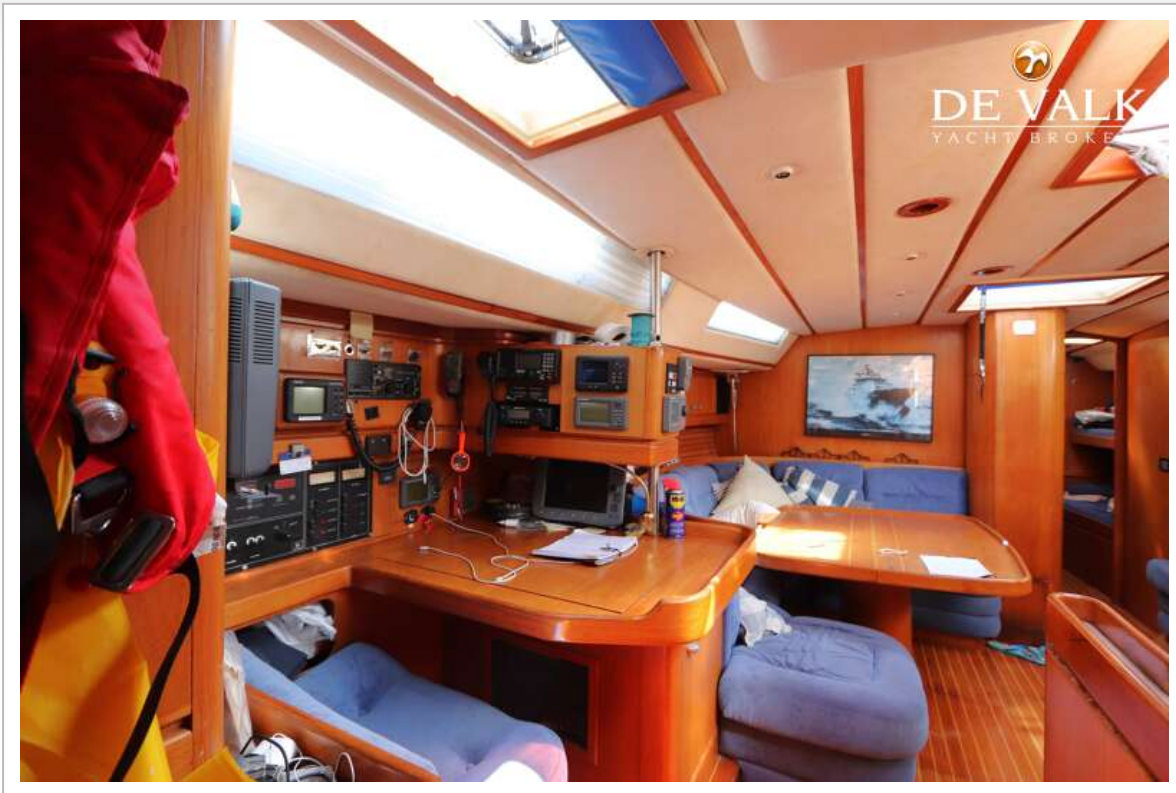
CENTURION 59



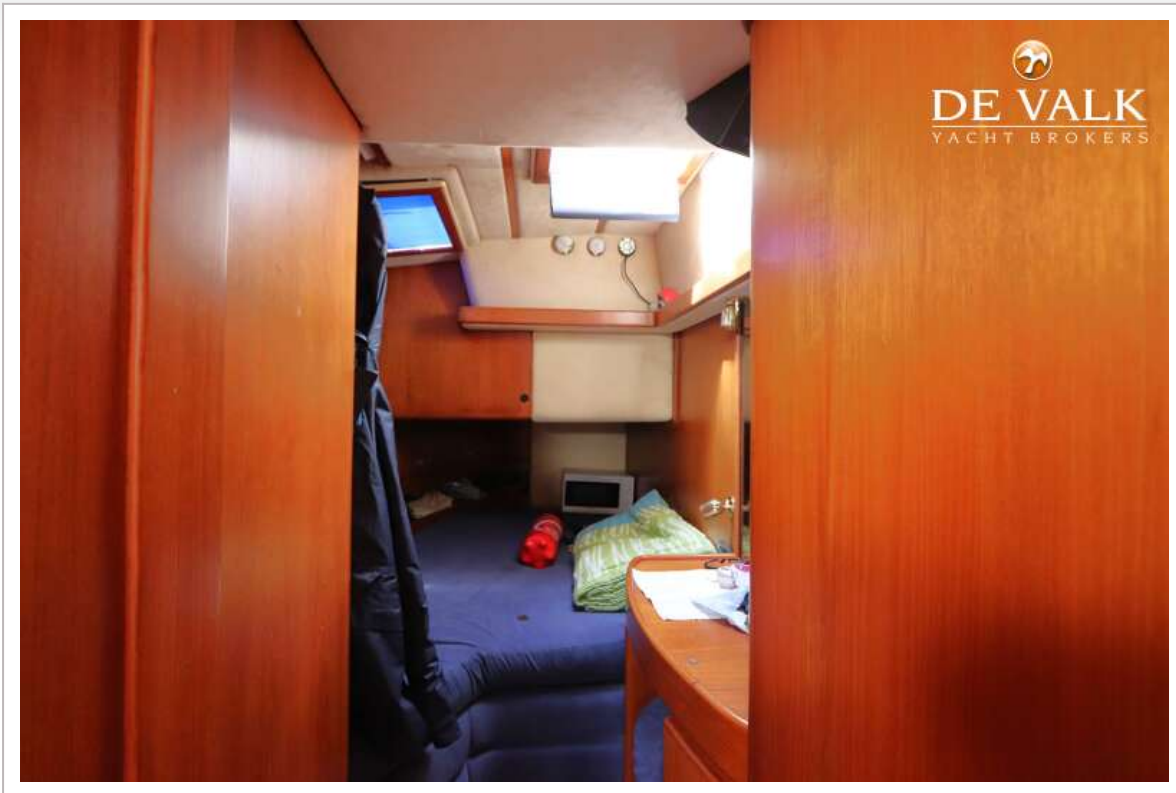
CENTURION 59



CENTURION 59



CENTURION 59



CENTURION 59



CENTURION 59

