



DE VALK  
YACHT BROKERS



BEKEBREDE 1300



DE VALK  
YACHT BROKERS

# BEKEBREDE 1300

## BROKER'S COMMENTS

The Bekebrede 1300 "Zwerver", built in 1998, combines a robust, seaworthy design with comfort and safety. With wide side decks, a high freeboard, continuous railings, and handrails, the vessel offers secure movement on board. The interior is light and spacious, with large windows providing panoramic views and plenty of natural light. The galley is well-equipped with an electric cooktop and convection oven (no gas on board). The Bekebrede 1300 sleeps 2 in a private cabin, making it ideal for extended stays

*Hans Visser*

## SPECIFICATIONS

|                     |                            |                |                             |
|---------------------|----------------------------|----------------|-----------------------------|
| <b>Dimensions</b>   | 13.65 x 4.10 x 1.16 (m)    | <b>Builder</b> | De Schiffart - Terherne     |
| <b>Built</b>        | 1998                       | <b>Cabins</b>  | 1                           |
| <b>Material</b>     | Steel                      | <b>Berths</b>  | 4                           |
| <b>Engine(s)</b>    | 2 x Volvo TAMD31M-A diesel | <b>Hp/Kw</b>   | 2 x 105.00 (hp), 77.28 (kw) |
| <b>Asking price</b> | € 199.000 (VAT Paid)       | <b>Lying</b>   | at sales office             |

## CONTACT

|                     |   |                  |                  |
|---------------------|---|------------------|------------------|
| <b>Sales office</b> | De Valk Sneek                                     | <b>Telephone</b> | +31 515 42 80 30 |
| <b>Address</b>      | Zwolsmanweg 7<br>8606 KC Sneek<br>The Netherlands | <b>E-mail</b>    | sneek@devalk.nl  |

## DISCLAIMER

These particulars are given in good faith as supplied but cannot be guaranteed.



# BEKEBREDE 1300

## GENERAL

|                                   |  |
|-----------------------------------|--|
| <b>Model</b>                      | BEKEBREDE 1300   |
| <b>Type</b>                       | motor yacht  |
| <b>LOA (m)</b>                    | 13,65  |
| <b>Beam (m)</b>                   | 4,10   |
| <b>Draft (m)</b>                  | 1,16   |
| <b>Air draft (m)</b>              | 2,85   |
| <b>Headroom (m)</b>               | 1,95   |
| <b>Year built</b>                 | 1998   |
| <b>Builder</b>                    | De Schiffart - Terherne  |
| <b>Country</b>                    | The Netherlands  |
| <b>Designer</b>                   | Martin bekebrede   |
| <b>Displacement (t)</b>           | 15   |
| <b>Ballast (tonnes)</b>           | Aprox 0,2 t  |
| <b>CE norm</b>                    | NA   |
| <b>Hull material</b>              | steel  |
| <b>Hull colour</b>                | 2024   Dark bleu   |
| <b>Hull shape</b>                 | hard chine   |
| <b>Superstructure material</b>    | steel  |
| <b>Rubbing strake</b>             | stainless steel  |
| <b>Deck material</b>              | steel  |
| <b>Deck finish</b>                | non-skid paint   |
| <b>Superstructure deck finish</b> | non-skid paint   |
| <b>Cockpit deck finish</b>        | teak   |
| <b>Antifouling (year)</b>         | Sandblasted and antifouling 2024                                   |
| <b>Window frame</b>               | aluminium  |
| <b>Window material</b>            | double glazing   |
| <b>Deckhatch</b>                  | 5x   |
| <b>Portholes</b>                  | 6x   |
| <b>Radar arch</b>                 | collapsible   Hydraulic cylinder overhauled 2024   Stainless steel |
| <b>Fuel tank (litre)</b>          | 2x 400 ltr.  |



# BEKEBREDE 1300

|                                    |   |
|------------------------------------|---|
| <b>Level indicator (fuel tank)</b> | yes   |
| <b>Freshwater tank (litre)</b>     | 2x 300 ltr.   |
| <b>Blackwater tank (litre)</b>     | 1x 250 ltr   1x 120 ltr.                                    |
| <b>Wheel steering</b>              | hydraulic   joystick electric/ hydraulic steering (pro-joy) |
| <b>Inside helm position</b>        | yes   |

## ACCOMMODATION

|                                      |  |
|--------------------------------------|--|
| <b>Cabins</b>                        | 1  |
| <b>Berths</b>                        | 4  |
| <b>Interior</b>                      | mahogany   |
| <b>Floor</b>                         | carpet   09-2024   |
| <b>Open cockpit</b>                  | yes  |
| <b>Deck saloon</b>                   | yes  |
| <b>Headroom saloon (m)</b>           | Aprox 1,95 mtr.  |
| <b>Heating</b>                       | diesel ducted hot air Overhaul 03-2024   Eberspacher     |
| <b>Air-conditioning</b>              | Cruisair   |
| <b>Dinette to convert into berth</b> | Can be converted in to a double bed                      |
| <b>Sliding door to aft deck</b>      | yes  |
| <b>Countertop</b>                    | wood   |
| <b>Sink</b>                          | stainless steel  |
| <b>Cooker</b>                        | electric   Bosch 2 burner                                |
| <b>Extractor</b>                     | Electric   |
| <b>Microwave/oven combi</b>          | Bosch  |
| <b>Fridge</b>                        | Coolmatic  |
| <b>Freezer</b>                       | Electrolux   |
| <b>Hot water system</b>              | 220V + engine   07-2024   Isotemp boiler   Aprox 55 ltr. |
| <b>Water pressure system</b>         | electrical Jabsco  |
| <b>Owners cabin</b>                  | double bed   |
| <b>Wardrobe</b>                      | hanging and shelves                                      |
| <b>Bathroom</b>                      | shared   |
| <b>Toilet</b>                        | shared   |



# BEKEBREDE 1300

|                 |                 |
|-----------------|-----------------|
| Toilet system   | electric 2006   |
| Wash basin      | in the bathroom |
| Shower          | shared          |
| Washing machine | Miele           |
| Dryer           | Miele           |

## MACHINERY

|                          |                                   |
|--------------------------|-----------------------------------|
| No of engines            | 2                                 |
| Make                     | Volvo                             |
| Type                     | TAMD31M-A                         |
| HP                       | 105                               |
| kW                       | 77.28                             |
| Fuel                     | diesel                            |
| Year installed           | 1998                              |
| Maximum speed (kn)       | 10                                |
| Cruising speed (kn)      | 8                                 |
| Consumption (l/hr)       | 7                                 |
| Engine cooling system    | closed keelcooling                |
| Drive                    | shaft                             |
| Shaft seal               | Water                             |
| Gearbox                  | mechanical Volvo HS1A 2,6:1       |
| Bowthruster              | electric                          |
| Sternthruster            | electric 2019                     |
| Exhaust                  | watercooled                       |
| Propeller shaft material | stainless steel                   |
| Shaft lubrication        | water                             |
| Electric bilge pump      | Jabsco                            |
| Electrical installation  | 12/24/230V                        |
| Generator                | Mastervolt Whisper 6000           |
| Start battery            | 02-2024   1x 12V 74 Ah            |
| Service battery          | 02-2024   4x SMF OHV - 12V 225 Ah |



# BEKEBREDE 1300

|                                 |                                    |
|---------------------------------|------------------------------------|
| <b>Battery monitor</b>          | Mastervolt Power System control    |
| <b>Battery charger</b>          | 2021   Victron IP bleu smart 12/30 |
| <b>Battery charger/inverter</b> | Mastervolt Ultra 2500W             |
| <b>Solar panel</b>              | 2x                                 |
| <b>Insulation transformer</b>   | 2024                               |
| <b>Extra info</b>               | New impellerpump 2024              |

## NAVIGATION

|                          |                       |
|--------------------------|-----------------------|
| <b>Compass</b>           | Centrek               |
| <b>Depth sounder/log</b> | 2005   Raymarine ST60 |
| <b>VHF</b>               | Sailor                |
| <b>Autopilot</b>         | Furuno                |
| <b>Radar</b>             | Garmin HD             |
| <b>GPS</b>               | Raymarine             |
| <b>Searchlight</b>       | yes                   |

## EQUIPMENT

|                         |                         |
|-------------------------|-------------------------|
| <b>Cockpit cover</b>    | 2006                    |
| <b>Window cover</b>     | yes                     |
| <b>Cockpit table</b>    | yes                     |
| <b>Bathing platform</b> | 2024 new teak on stairs |
| <b>Boarding ladder</b>  | stainless steel         |
| <b>Deck shower</b>      | yes                     |
| <b>Windlass</b>         | electrical Vetus        |
| <b>Davits</b>           | stainless steel Simpson |
| <b>Davits controls</b>  | electrical              |
| <b>Sea railing</b>      | stainless steel         |
| <b>Wiper</b>            | yes                     |
| <b>Fenders</b>          | yes                     |
| <b>Mooring lines</b>    | yes                     |
| <b>TV</b>               | 2024   Smart tv         |



|                                    |                          |
|------------------------------------|--------------------------|
| <b>Radio</b>                       | Pionier with DAB antenna |
| <b>Speakers in salon</b>           | yes                      |
| <b>Clock - barometer</b>           | yes                      |
| <b>Extinguisher in engine room</b> | yes                      |



BEKEBREDE 1300





# BEKEBREDE 1300



BEKEBREDE 1300



# BEKEBREDE 1300





# BEKEBREDE 1300



BEKEBREDE 1300





BEKEBREDE 1300



BEKEBREDE 1300



BEKEBREDE 1300

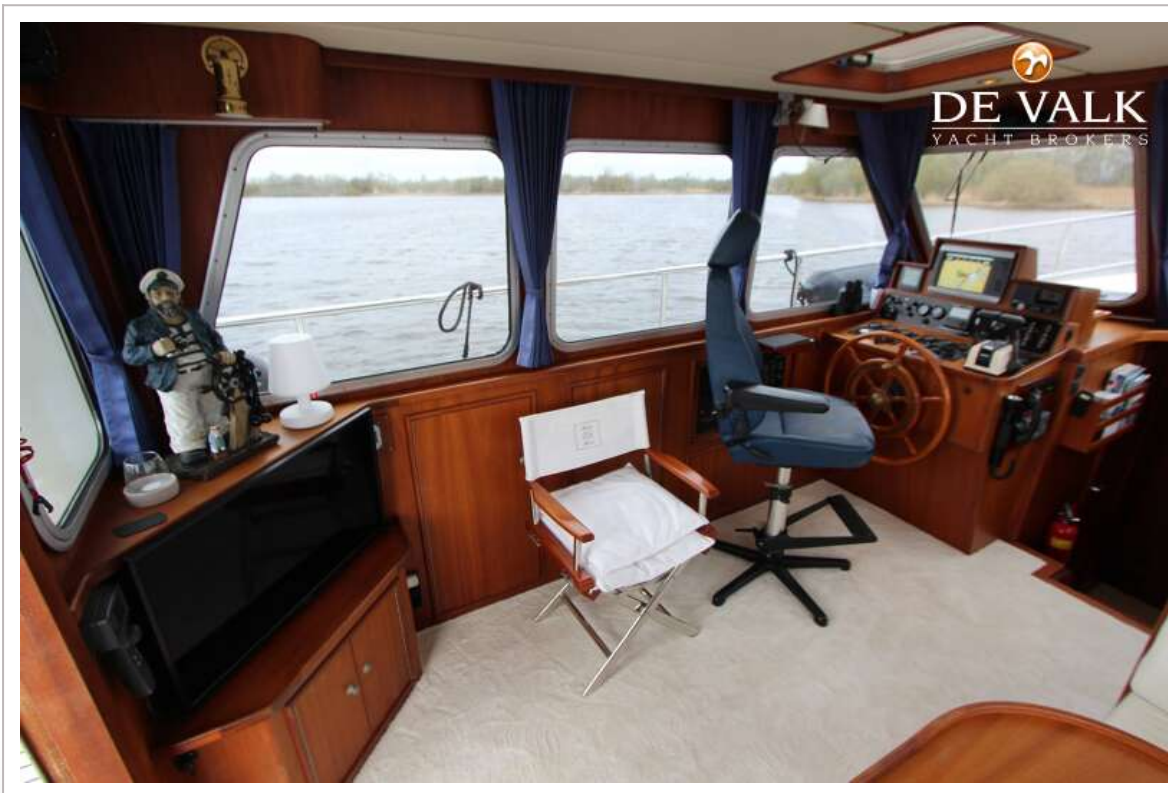




BEKEBREDE 1300



# BEKEBREDE 1300





BEKEBREDE 1300

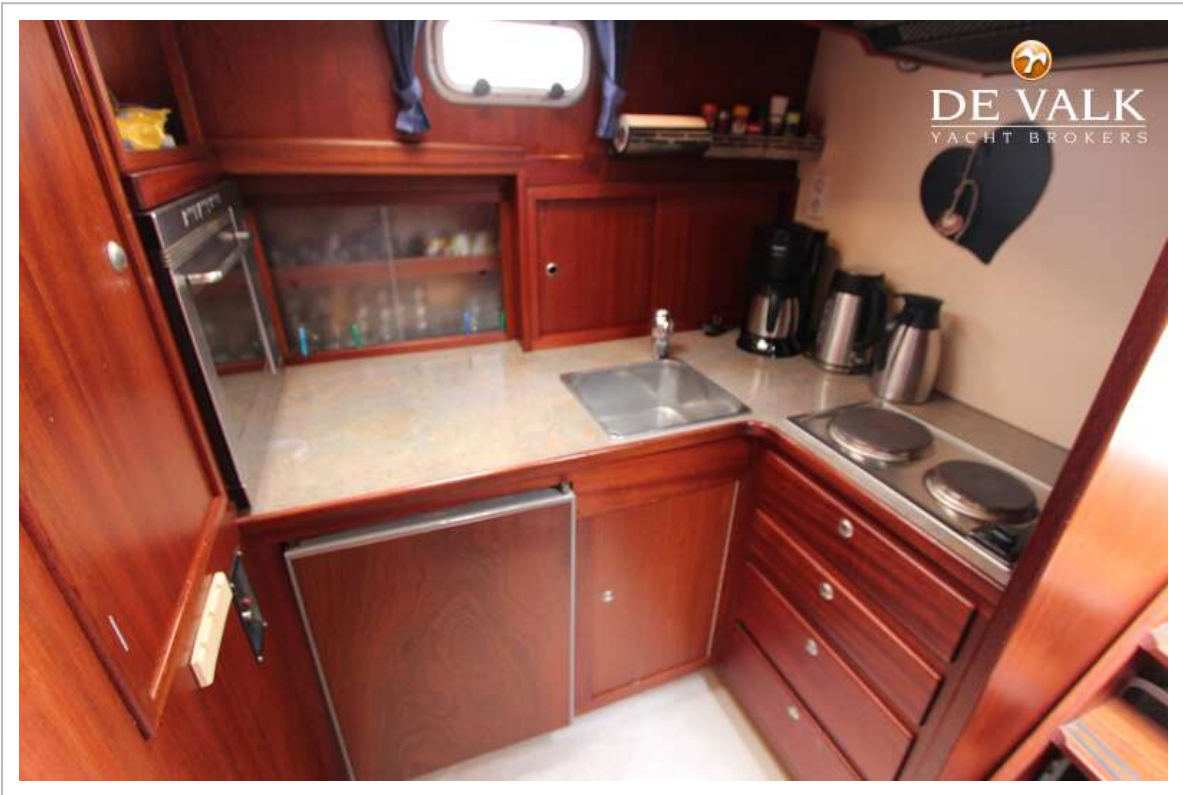


BEKEBREDE 1300

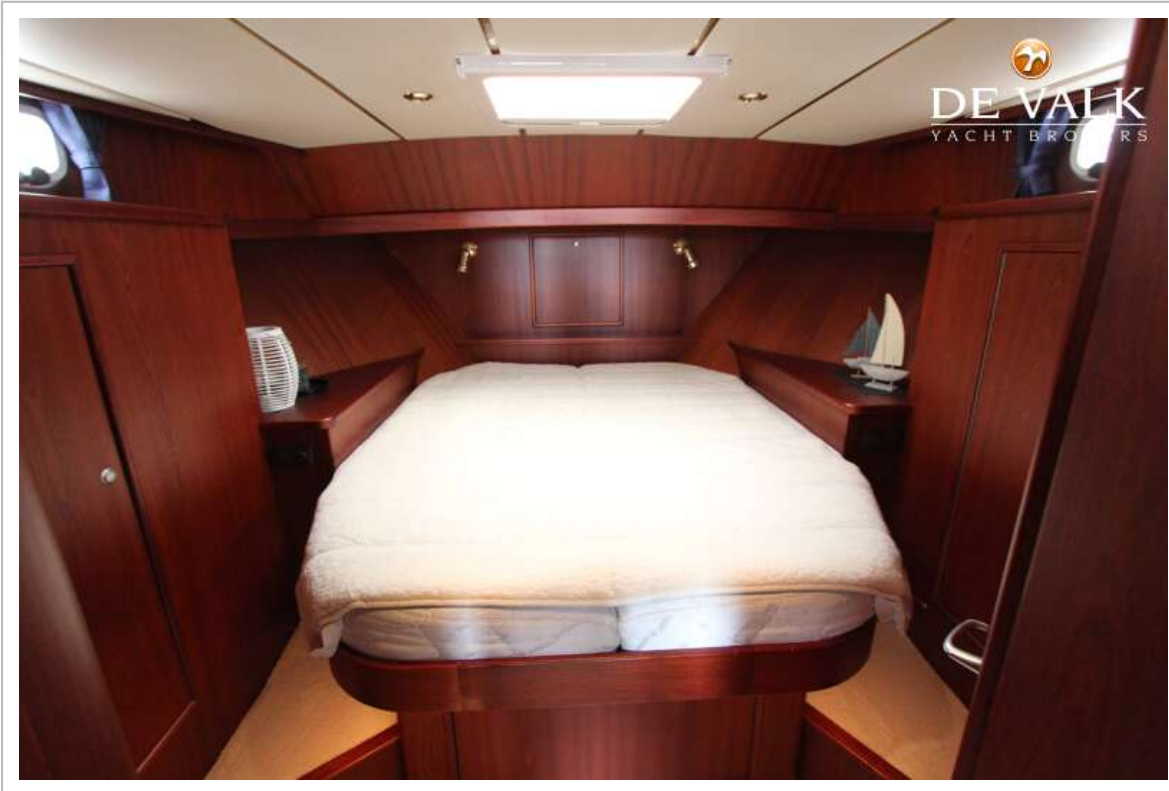




BEKEBREDE 1300



BEKEBREDE 1300



BEKEBREDE 1300

