



BOARNCRUISER 44 ELEGANCE AC

BOARNCRUISER 44 ELEGANCE AC

BROKER'S COMMENTS

Boarncruiser Elegance 44 AC '60 years edition' is a true wonder of space! The very spacious and highly efficient layout with 3 cabins and 6 fixed berths combined with the compact size of over 13 metres offers everything you would expect from a modern motor yacht. 'Lady Q' was launched (august) 2024, so we can rightly speak of an almost new motor yacht. Come and admire 'Lady Q' in our covered sales marina in Sneek. . we are open seven days a week.

Henk de Vries

SPECIFICATIONS

| | | | |
|---------------------|---------------------------|----------------|------------------------------|
| Dimensions | 13.68 x 4.36 x 1.15 (m) | Builder | Boarnstream Yachting Jirnsum |
| Built | 2024 | Cabins | 3 |
| Material | Steel | Berths | 8 |
| Engine(s) | 1 x Yanmar 4LV-150 diesel | Hp/Kw | 150.00 (hp), 110.40 (kw) |
| Asking price | € 757.500 (VAT Not paid) | Lying | |

CONTACT

| | | | |
|---------------------|---|------------------|------------------|
| Sales office | De Valk Sneek | Telephone | +31 515 42 80 30 |
| Address | Zwolsmanweg 7 8606 KC Sneek The Netherlands | E-mail | sneek@devalk.nl |

DISCLAIMER

These particulars are given in good faith as supplied but cannot be guaranteed.



BOARNCRUISER 44 ELEGANCE AC

GENERAL

| | |
|-----------------------------------|-----------------------------|
| Model | BOARNCRUISER 44 ELEGANCE AC |
| Type | motor yacht |
| LOA (m) | 13,68 |
| Beam (m) | 4,36 |
| Draft (m) | 1,15 |
| Air draft (m) | 3,33 |
| Air draft min (m) | 2,90 |
| Headroom (m) | 2,00 |
| Year built | 2024 |
| Launched | 2024 |
| Builder | Boarnstream Yachting Jirsum |
| Country | The Netherlands |
| Designer | Boarnstream Yachting Jirsum |
| Displacement (t) | 18 |
| CE norm | B |
| Hull material | steel |
| Hull colour | white |
| Hull thickness (mm) | 5 |
| Hull shape | multi hard chine |
| Superstructure material | steel |
| Superstructure (mm) | 4 |
| Deck plate thickness (mm) | 4 |
| Rubbing strake | stainless steel |
| Deck material | steel |
| Deck finish | synthetic teak |
| Superstructure deck finish | paint |
| Cockpit deck finish | synthetic teak |
| Antifouling (year) | 2024 |
| Dorades | yes |
| Window material | tempered glass ISO tinted |



BOARNCRUISER 44 ELEGANCE AC

| | |
|------------------------------|----------------------------|
| Deckhatch | yes |
| Portholes | yes |
| Insulation | foam |
| Mast can be lowered | manual Stainless steel |
| Fuel tank (litre) | steel 800 |
| Level indicator (fuel tank) | Raymarine Axiom |
| Freshwater tank (litre) | polyethylene 600 |
| Level indicator (freshwater) | Raymarine Axiom |
| Blackwater tank (litre) | polyethylene 250 |
| Level indicator (blackwater) | Raymarine Axiom |
| Blackwater tank extraction | deck extraction + pump |
| Wheel steering | hydraulic |
| Outside helm position | hydraulic |
| More info on paintwork | Topcoat Alexseal (2-comp.) |
| Extra info | 16 insect screens on board |

ACCOMMODATION

| | |
|-------------------------------|--|
| Cabins | 3 |
| Berths | 8 |
| Interior | HPL (High Pressure Laminate) Oak |
| Floor | carpet "Infinity" polyethylene |
| Aft deck | yes |
| Saloon | yes |
| Headroom saloon (m) | 2,0 |
| Sliding roof | manual |
| Heating | diesel ducted hot air Webasto 4kW (ITCC) |
| Heating 2 | diesel ducted hot air Webasto 5kW (ITCC) |
| Air-conditioning | Prepared in all cabins |
| Aft Cabin | yes |
| Dinette to convert into berth | yes |
| Opening door to aft deck | yes |



BOARNCRUISER 44 ELEGANCE AC

| | |
|-----------------------|--|
| Galley | yes |
| Countertop | GetaCore (composite) |
| Sink | GetaCore (composite) |
| Cooker | electric 4-pits Bosch |
| Microwave/oven combi | Samsung |
| Fridge | Isotherm CR130EL |
| Freezer | In the fridge |
| Hot water system | 220V + engine Boiler 40ltr 800W (230V) |
| Water pressure system | electrical |
| Owners cabin | French bed |
| Bed length (m) | 2,0 |
| Wardrobe | hanging/drawers/shelves |
| Bathroom | en suite |
| Toilet | en suite |
| Toilet system | electric |
| Wash basin | in the bathroom |
| Shower | en suite |
| Guest cabin 1 | French bed |
| Bed length (m) | 2,0 |
| Wardrobe | hanging/drawers/shelves |
| Bathroom | en suite |
| Toilet | en suite |
| Toilet system | electric |
| Wash basin | in the bathroom |
| Shower | en suite |
| Guest cabin 2 | twin single |
| Bed length (m) | 2,0 |
| Wardrobe | hanging/drawers/shelves |
| Bathroom | shared |
| Toilet | shared |
| Toilet system | electric |
| Wash basin | in the bathroom |



BOARNCRUISER 44 ELEGANCE AC

| | |
|-----------------------------|--------------------------------|
| Shower | shared |
| Washing machine/dryer combi | AEG 7000 Series ProSteam 8/5kg |

MACHINERY

| | |
|--------------------------|--------------------------------------|
| No of engines | 1 |
| Make | Yanmar |
| Type | 4LV-150 |
| HP | 150 |
| kW | 110.40 |
| Fuel | diesel |
| Year installed | 2024 |
| Maximum speed (kn) | Ca 10 |
| Cruising speed (kn) | 7 |
| Consumption (l/hr) | 4 |
| Engine hours | 25 |
| Engine cooling system | freshwater heat exchanger |
| Drive | shaft |
| Shaft seal | Python-Drive |
| Engine controls | electrical |
| Gearbox | hydraulic |
| Bowthruster | electric Sidepower 160kgf twin props |
| Sternthruster | electric Sidepower 160kgf twin props |
| Propeller type | fixed |
| Propeller blades | 4 |
| Propeller shaft material | stainless steel |
| Shaft lubrication | water |
| Electric bilge pump | 2x (automatic) |
| Electrical installation | 12V / 24V /230V |
| Generator | Prepared |
| Batteries | yes |
| Start battery | 140 amp. |



BOARNCRUISER 44 ELEGANCE AC

| | |
|---------------------------------|--|
| Service battery | 420 amp. (remote controled main switch) |
| Bowthruster battery | yes |
| Sternthruster battery | yes |
| Battery monitor | Victron Energy Cerbo GX |
| Battery charger/inverter | Victron Energy 3000W / 100 amp. |
| Shorepower | with cable 2 connections front & rear (15mtr. cable) |
| Insulation transformer | Victron Energy |
| Stabilizers | Prepared for Manus Master 1 rotor |

NAVIGATION

| | |
|--------------------------|--|
| Electric compass | Raymarine i70 |
| Depth sounder/log | Raymarine i70 |
| Log | Raymarine i70 |
| Plotter/GPS | Raymarine Axiom 2-12Pro Hybrid Touchscreen |
| Navigation lights | yes |

EQUIPMENT

| | |
|-------------------------|--------------------------------|
| Fixed windscreen | yes |
| Sprayhood | yes |
| Cockpit cover | yes |
| Bimini | yes |
| Cockpit cushions | yes |
| Cockpit table | yes |
| Bathing platform | yes |
| Boarding ladder | stainless steel |
| Deck shower | Warm & cold |
| Anchor | Bruce RVS 20kg |
| Anchor chain | 8mm / 30 mtr. |
| Windlass | electrical With remote control |
| Deck wash | yes |
| Sea railing | stainless steel 32mm |



BOARNCRUISER 44 ELEGANCE AC

| | |
|------------------------------------|----------------------------------|
| Grab rail (superstructure) | stainless steel |
| Railing side opening gates | yes |
| Wiper | 3x |
| Horn | electric |
| Fenders | yes |
| Mooring lines | yes |
| TV | Smart TV 43" with rotatable lift |
| TV receiver | DigiTenne |
| Radio | Fusion DAB radio |
| Speakers in salon | 2x Fusion |
| Fire extinguisher | 2x |
| Extinguisher in engine room | Automatic system. |



BOARNCRUISER 44 ELEGANCE AC



BOARNCRUISER 44 ELEGANCE AC



BOARNCRUISER 44 ELEGANCE AC



BOARNCRUISER 44 ELEGANCE AC



BOARNCRUISER 44 ELEGANCE AC



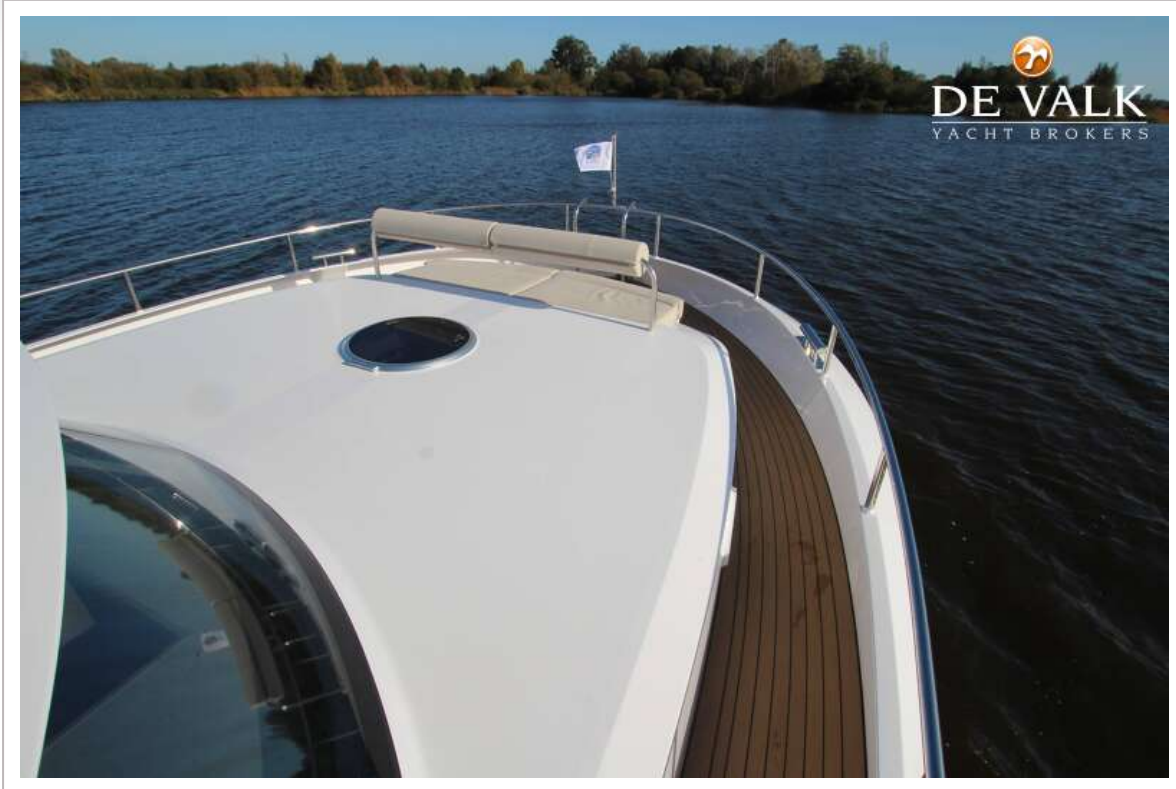
BOARNCRUISER 44 ELEGANCE AC



BOARNCRUISER 44 ELEGANCE AC



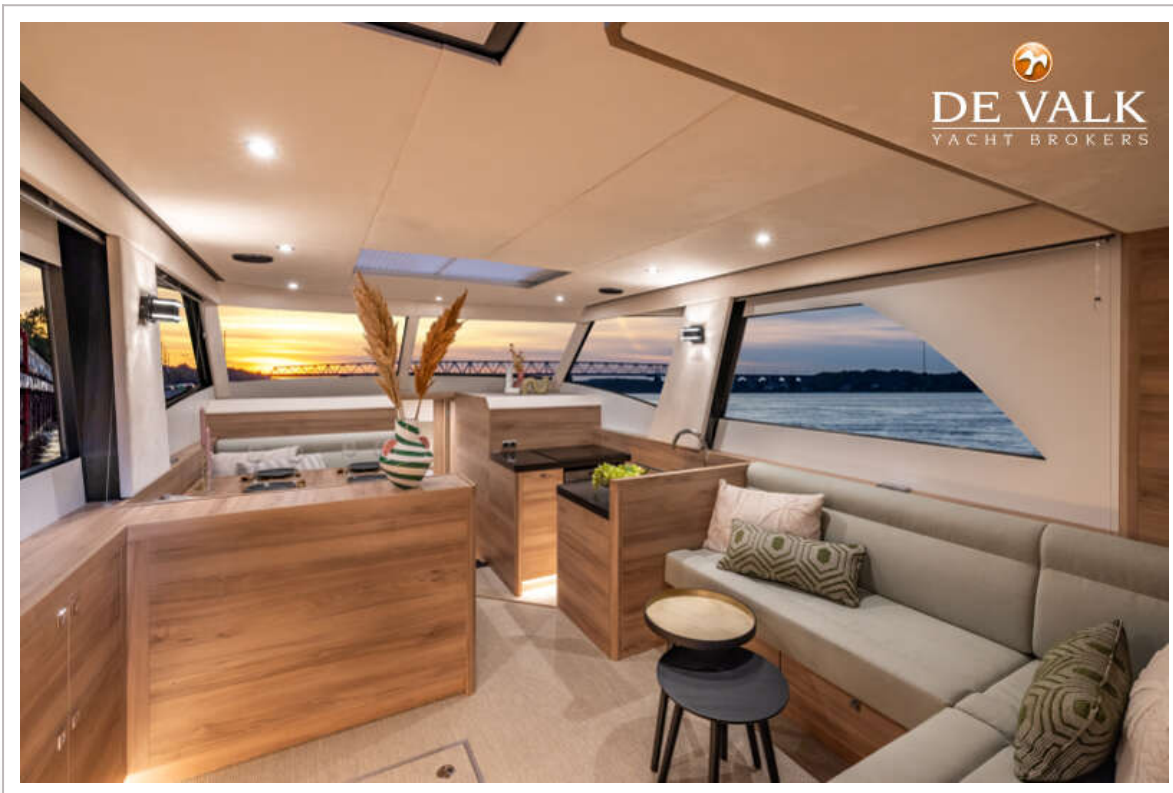
BOARNCRUISER 44 ELEGANCE AC



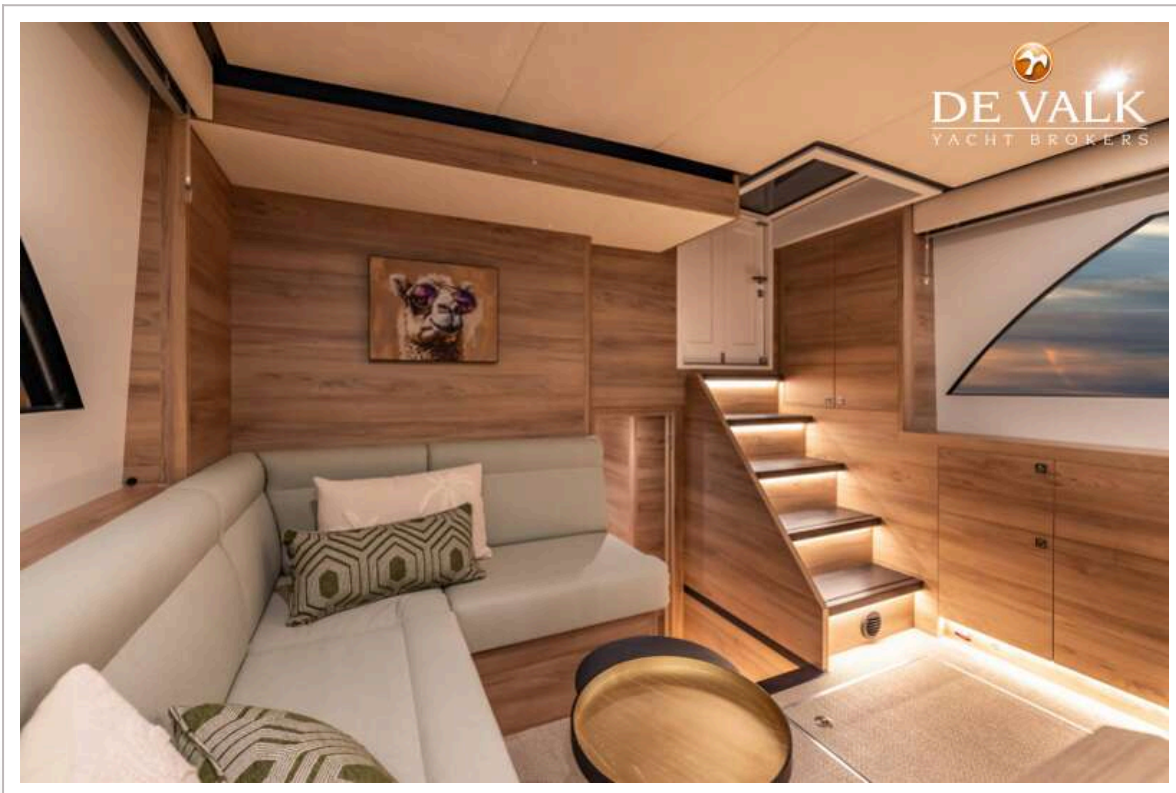
BOARNCRUISER 44 ELEGANCE AC



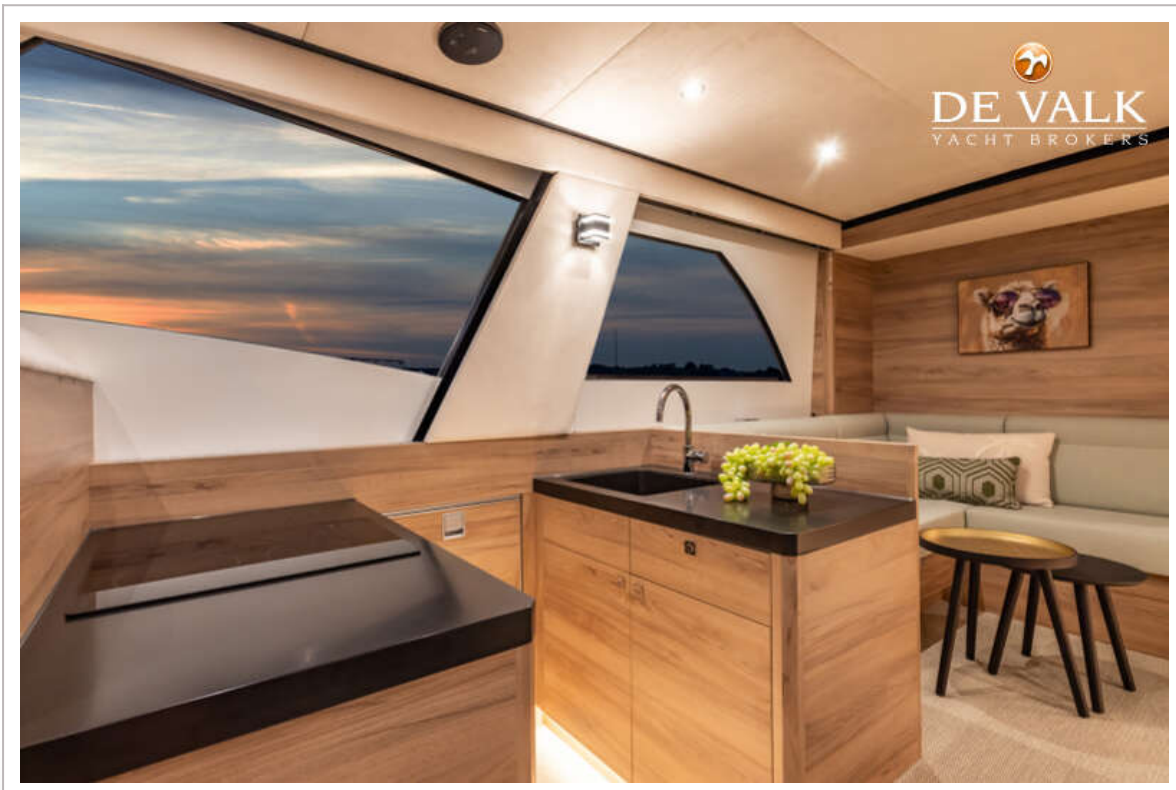
BOARNCRUISER 44 ELEGANCE AC



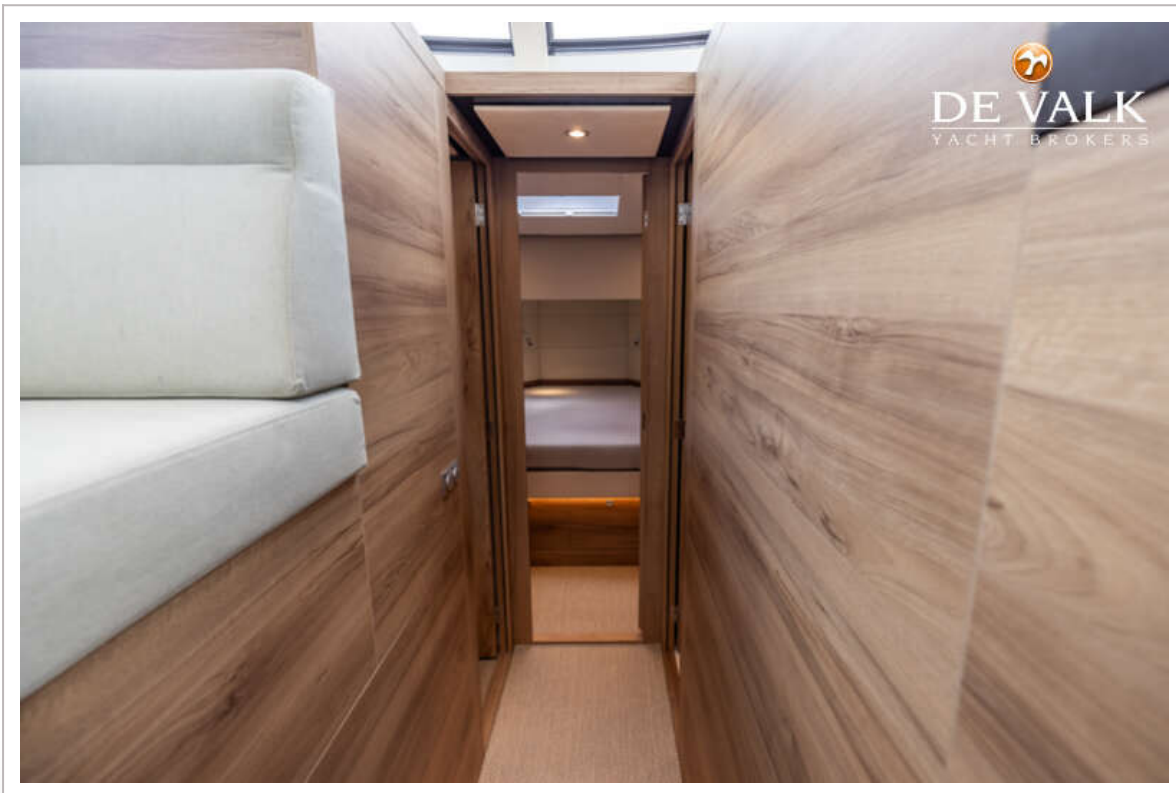
BOARNCRUISER 44 ELEGANCE AC



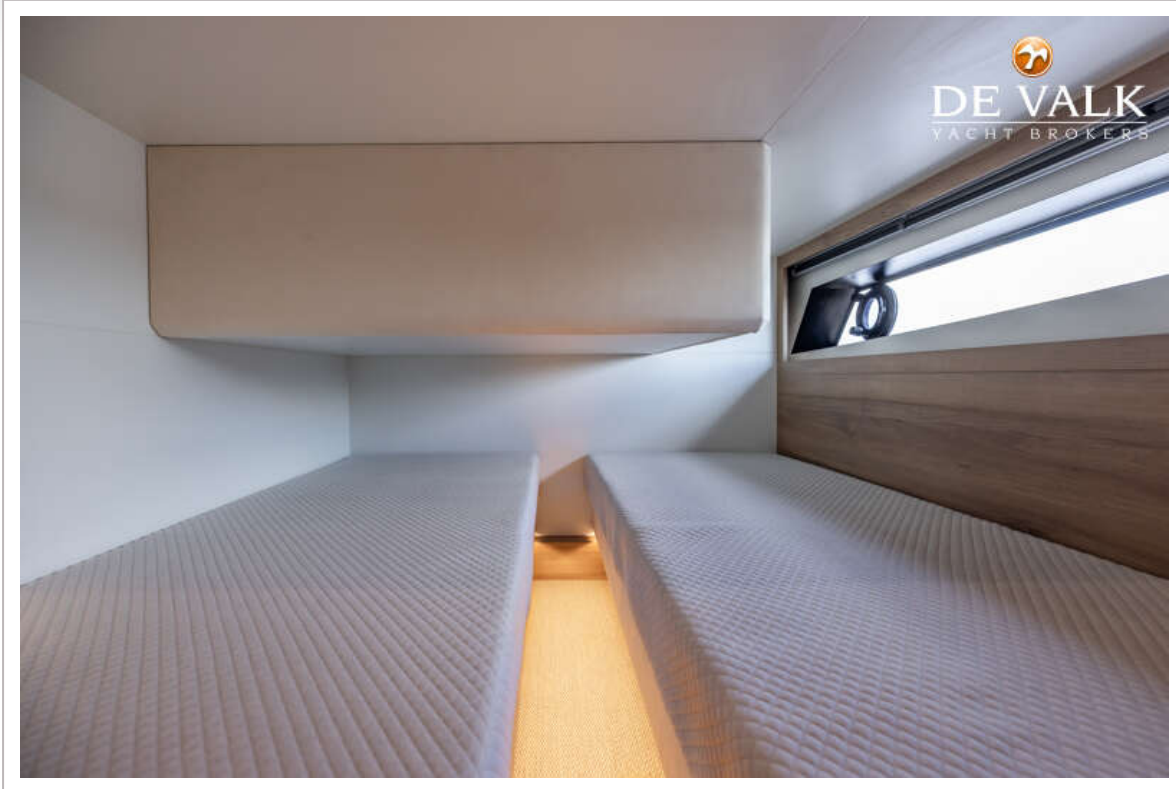
BOARNCRUISER 44 ELEGANCE AC



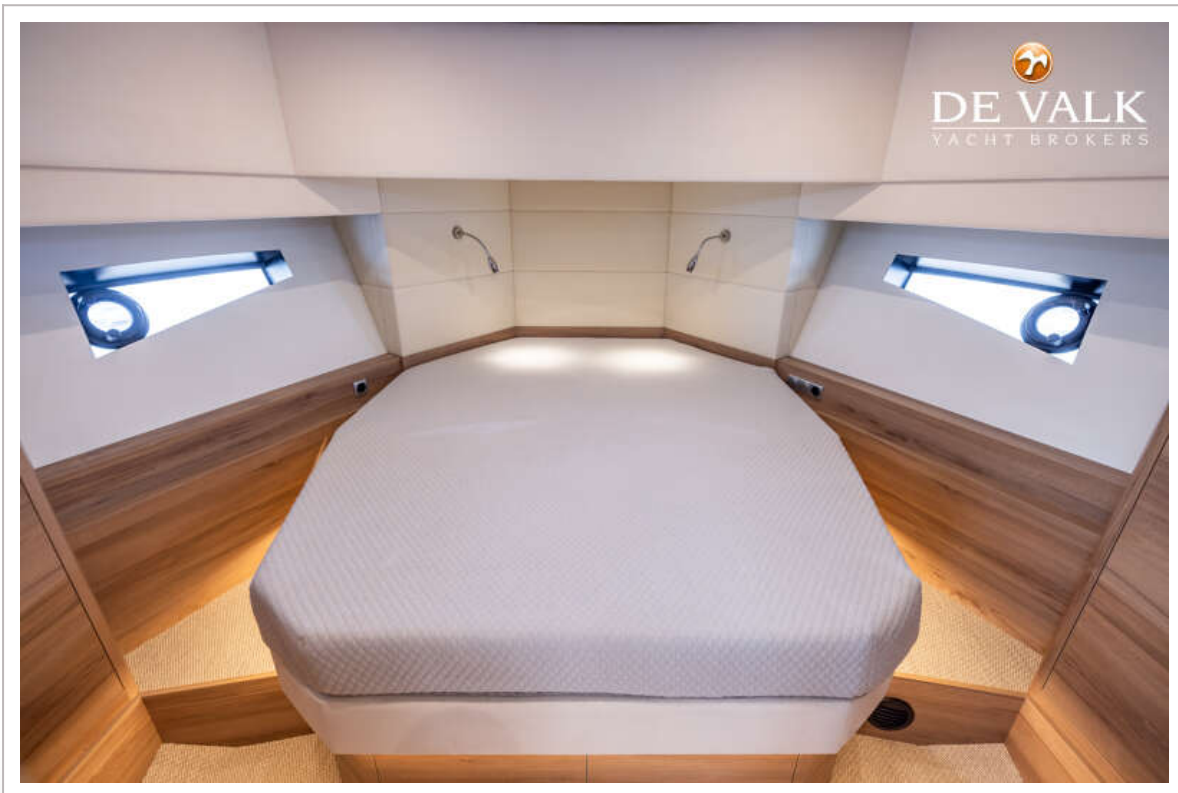
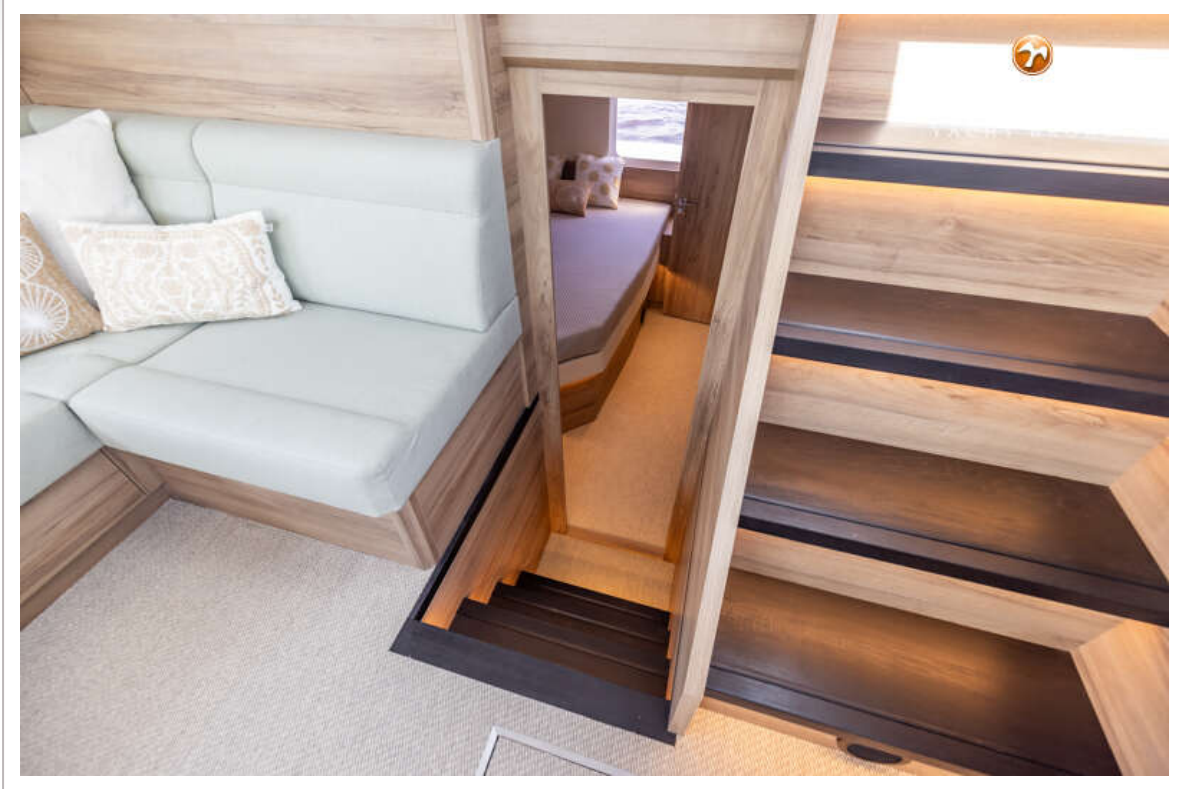
BOARNCRUISER 44 ELEGANCE AC



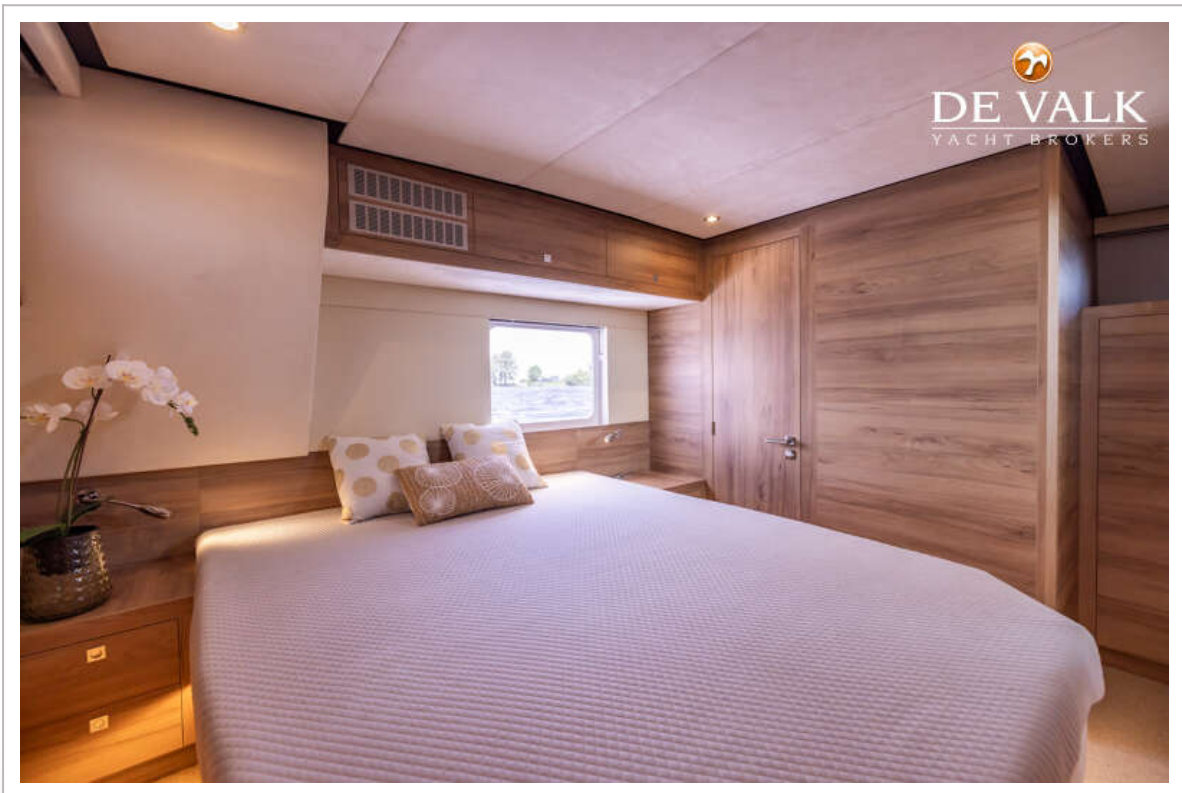
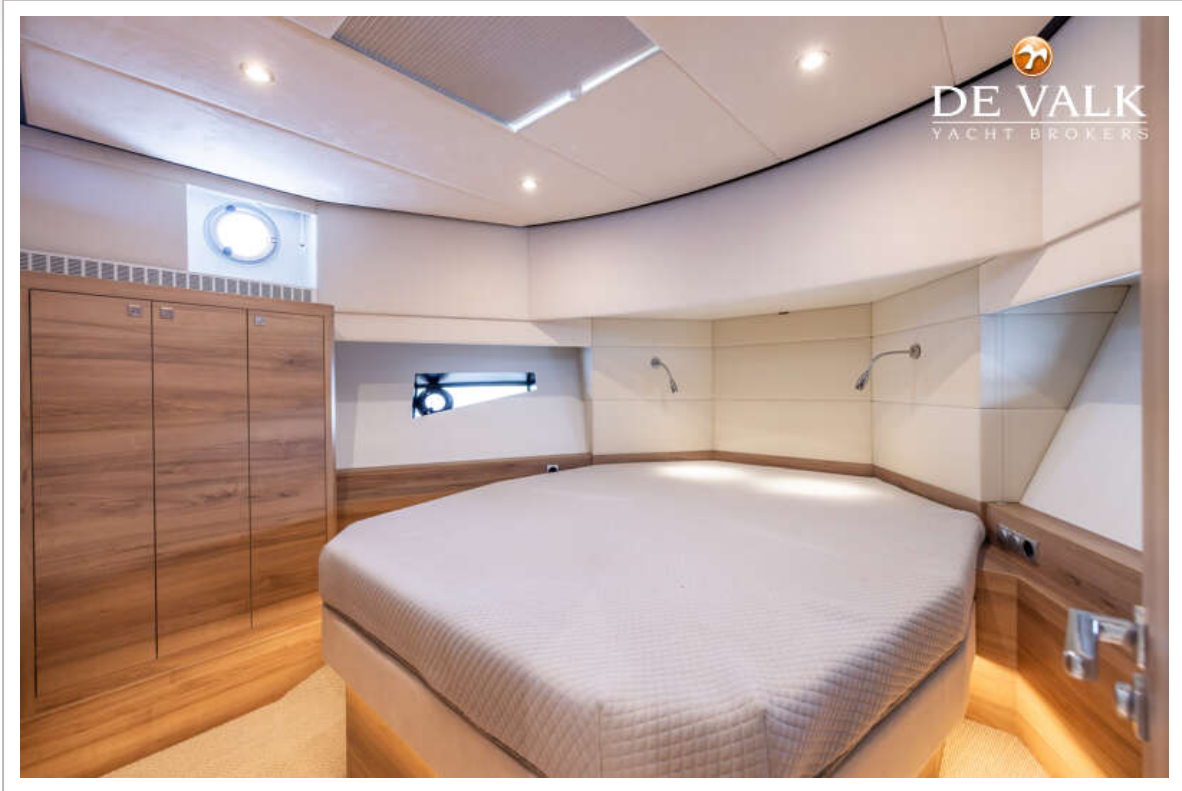
BOARNCRUISER 44 ELEGANCE AC



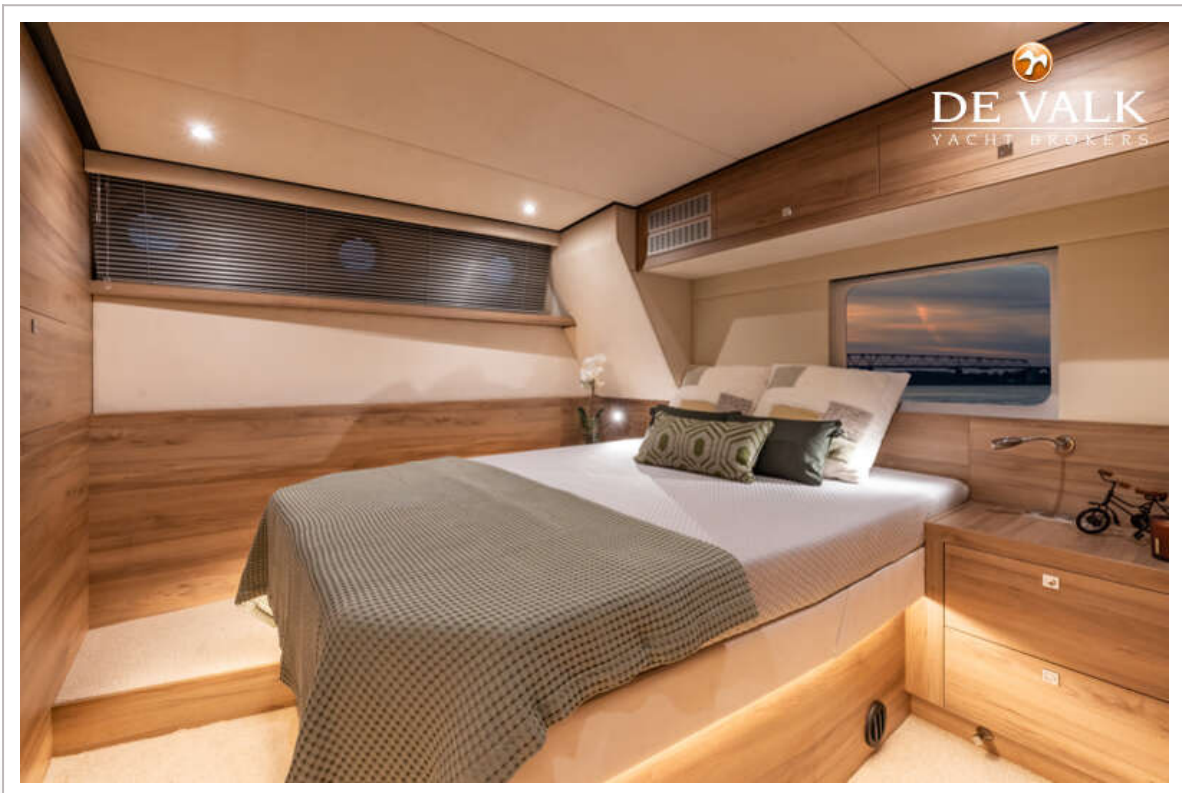
BOARNCRUISER 44 ELEGANCE AC



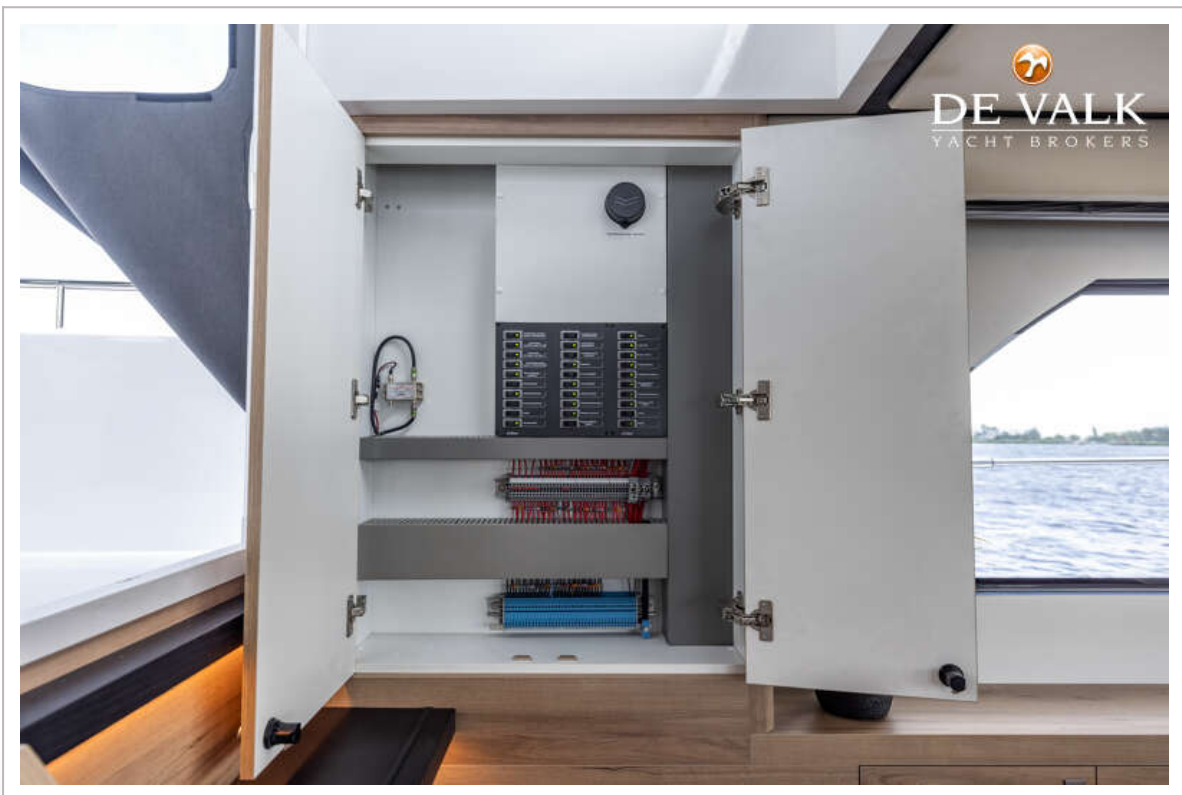
BOARNCRUISER 44 ELEGANCE AC



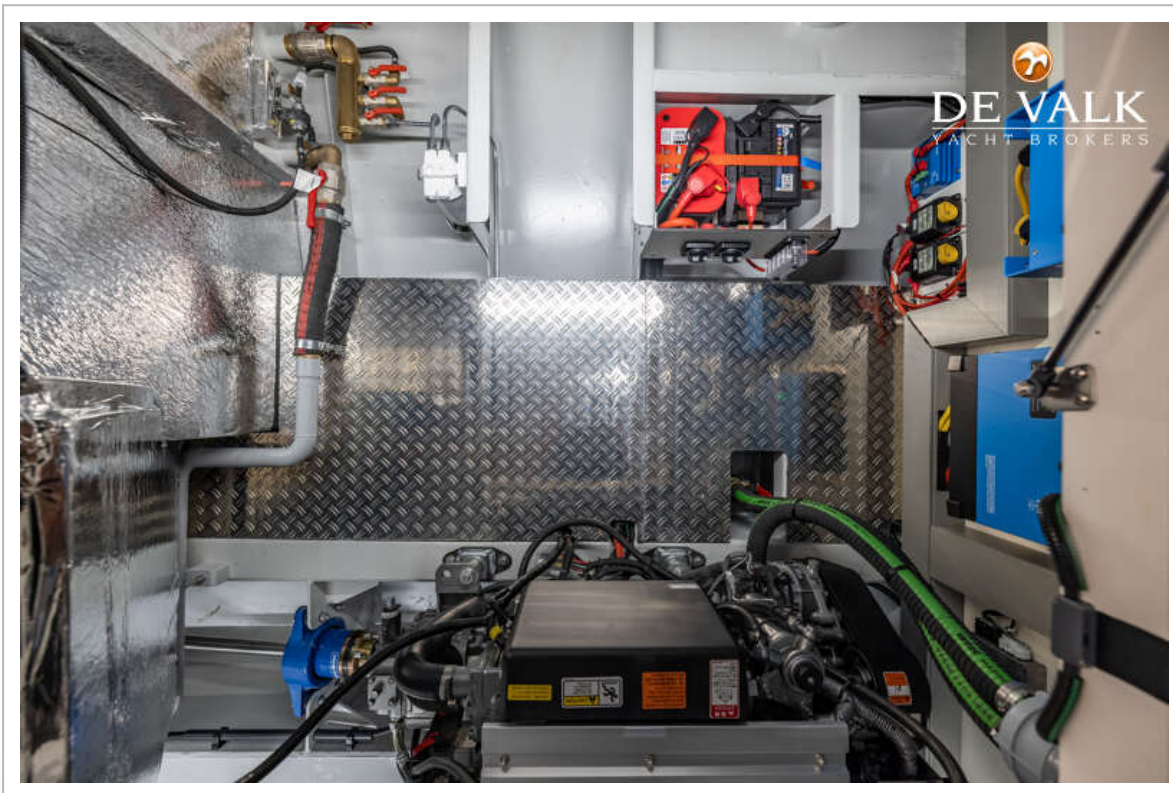
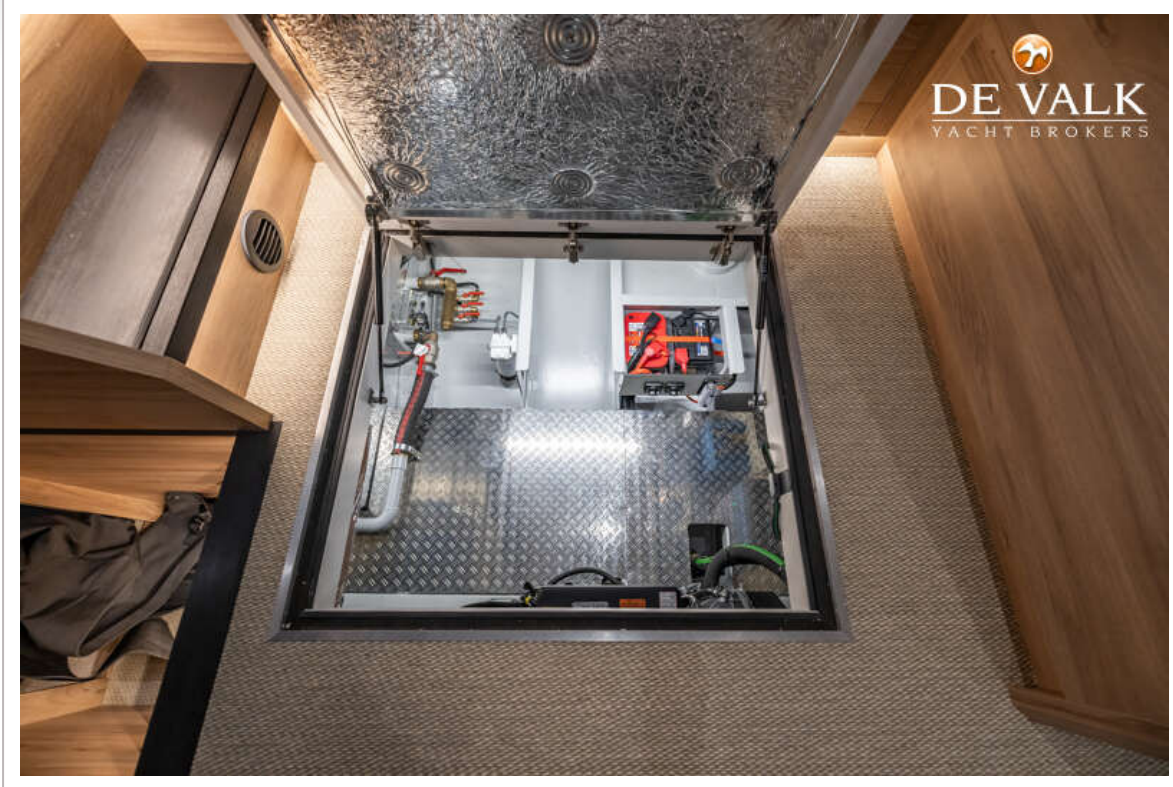
BOARNCRUISER 44 ELEGANCE AC



BOARNCRUISER 44 ELEGANCE AC



BOARNCRUISER 44 ELEGANCE AC



BOARNCRUISER 44 ELEGANCE AC



BOARNCRUISER 44 ELEGANCE AC

