



SWEDEN YACHTS 50



SWEDEN YACHTS 50

BROKER'S COMMENTS

The Sweden Yachts 50 is a timeless classic that not only out-sails most others but also offers a lot of comfort. SY Fragancia is the boat for those who want top-tier quality and craftsmanship. This is a fast and luxurious ocean cruiser, perfect for long trips, holiday sailing, or even as a liveaboard. Fragancia has been heavily upgraded in recent years. Ask for detail specification list. Vat is paid in Norway, to register the boat in EU, Vat shall be paid again in that country. The boat is located in Oslo, Norway, ready to sail.

Per Engdahl

SPECIFICATIONS

Dimensions	15.25 x 4.35 x 2 (m)	Builder	Sweden Yachts
Built	1990	Cabins	3
Material	GRP	Berths	6
Engine(s)	1 x Volvo Penta TMD31B diesel	Hp/Kw	100 (hp), 73.60 (kw)
Asking price	€ 170.000 (VAT Paid)	Lying	contact sales office

CONTACT

Sales office	De Valk Sweden	Telephone	+46 72 358 50 74
Address	Throughout Sweden Sweden	E-mail	sweden@devalk.nl

DISCLAIMER

These particulars are given in good faith as supplied but cannot be guaranteed.



SWEDEN YACHTS 50

GENERAL

Model	SWEDEN YACHTS 50
Type	sailing yacht
LOA (m)	15,25
Beam (m)	4,35
Draft (m)	2,00
Air draft (m)	22,00
Headroom (m)	2,00
Year built	1990
Builder	Sweden Yachts
Country	Sweden
Designer	Peter Norlin & Jens Östmann
Displacement (t)	14,5
Ballast (tonnes)	6
CE norm	A
Hull material	GRP
Hull colour	White
Keel type	Wing keel
Superstructure material	GRP
Deck material	GRP
Deck finish	Teak
Superstructure deck finish	Teak
Cockpit deck finish	Teak
Antifouling (year)	2024, Six layers epoxy + 5 layers of copper coat
Deckhatch	yes
Fuel tank (litre)	530
Freshwater tank (litre)	700
Blackwater tank (litre)	50
Wheel steering	yes
Outside helm position	yes



ACCOMMODATION

Cabins	3
Berths	6
Interior	Teak/Mahogany
Floor	Teak
Saloon	yes
Headroom saloon (m)	2
Heating	yes
Navigation center	yes
Chart table	yes
Aft Cabin	yes
Galley	yes
Countertop	Corian
Sink	yes
Cooker	Three burners
Oven	yes
Fridge	2 fridges
Freezer	90 l
Hot water system	yes
Water pressure system	yes
Toilet	yes
Toilet	2 toilets
Toilet system	yes
Shower	2 bathroom with shower

MACHINERY

No of engines	1
Make	Volvo Penta
Type	TMD31B
HP	100
kW	73.60



Fuel	diesel
Year installed	2023
Year of overhaul	2024
Engine hours	50
Drive	sail-drive

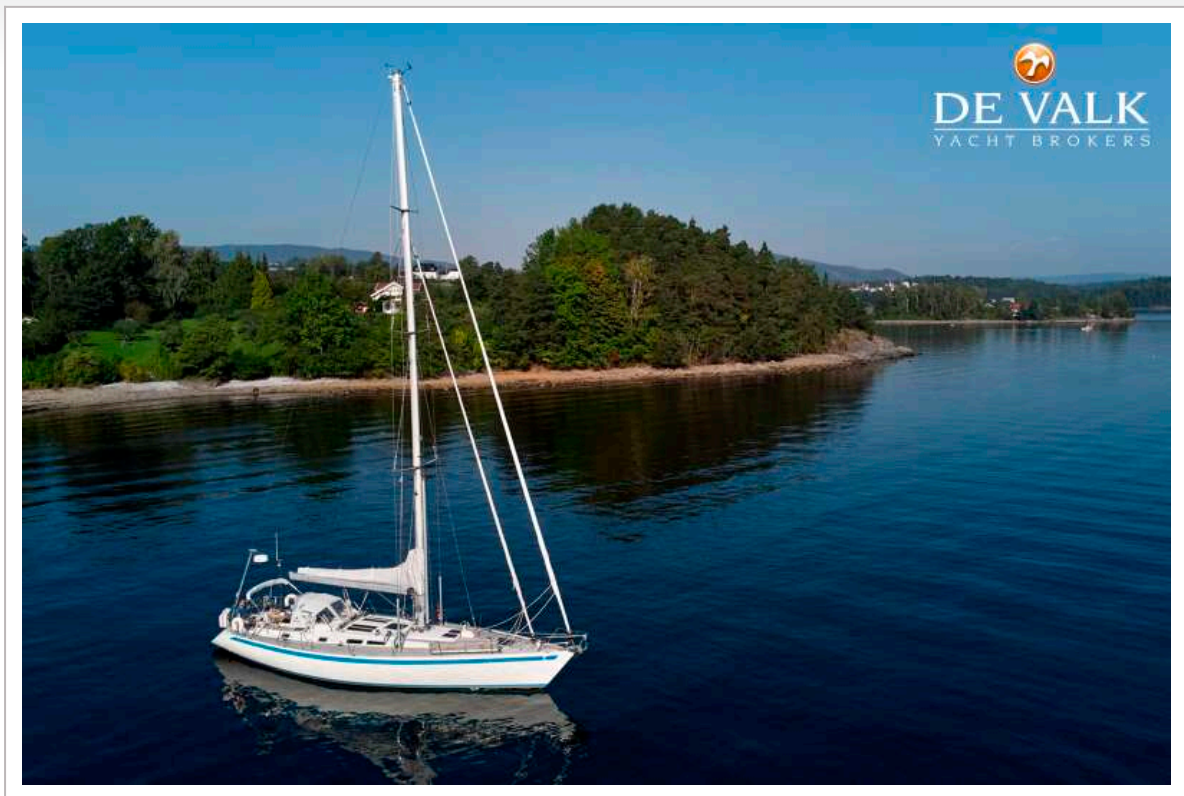
NAVIGATION

Extra info	All specifications in separate document
------------	---

RIGGING

Rigging	See separate document
Standing rigging	yes
Material mast	Aluminium
Mainsail	See separate document
Primary sheet winch	15 winches ,See separate document

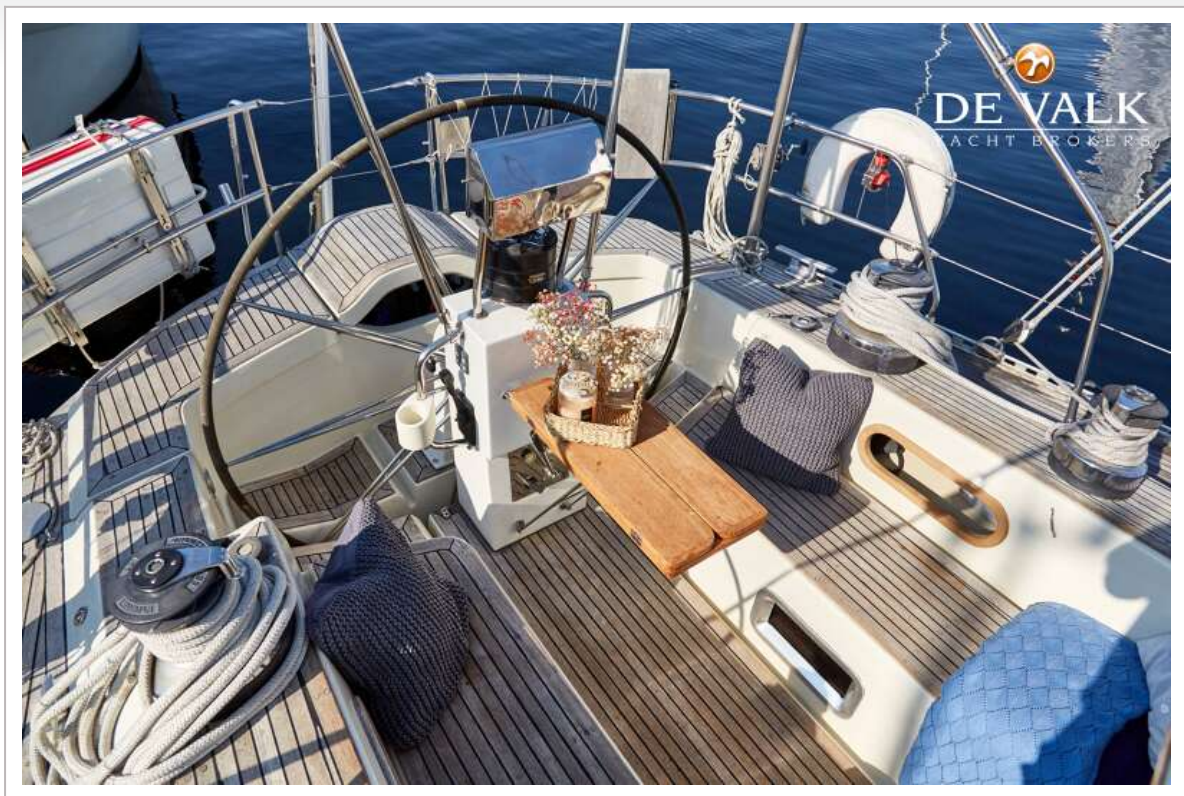




SWEDEN YACHTS 50



SWEDEN YACHTS 50



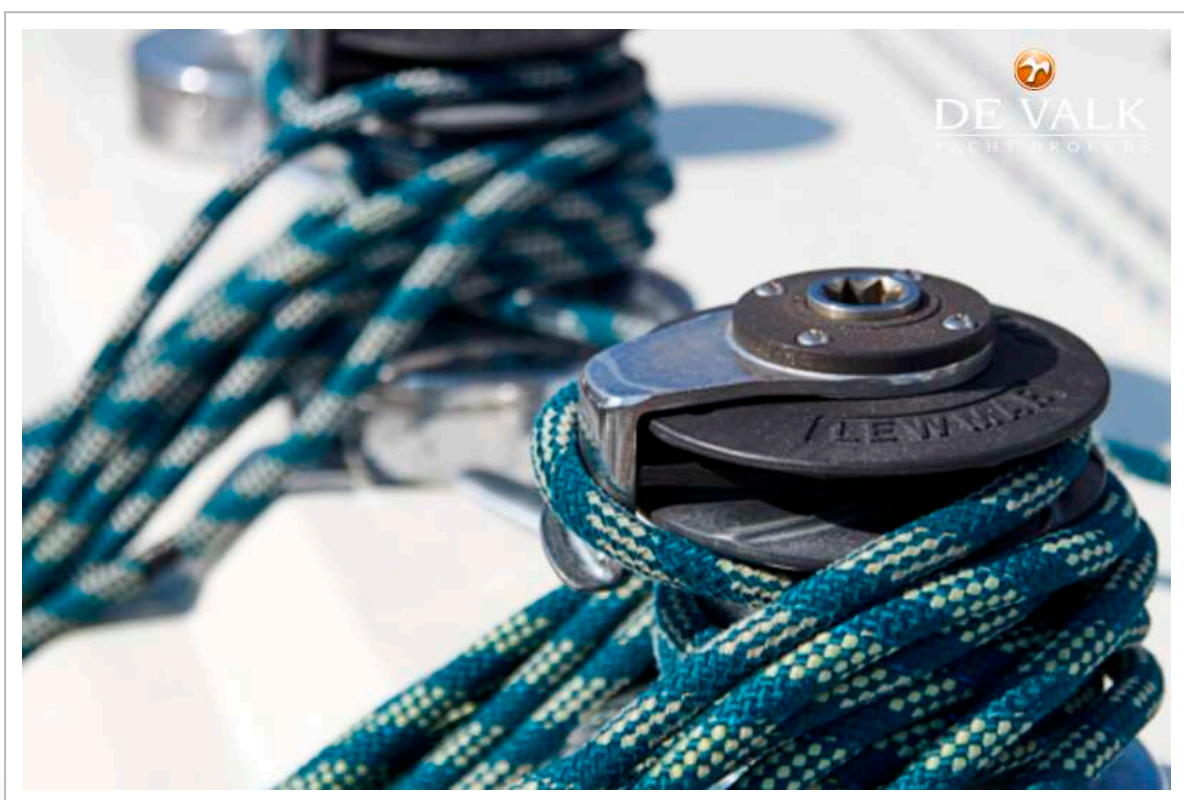
SWEDEN YACHTS 50



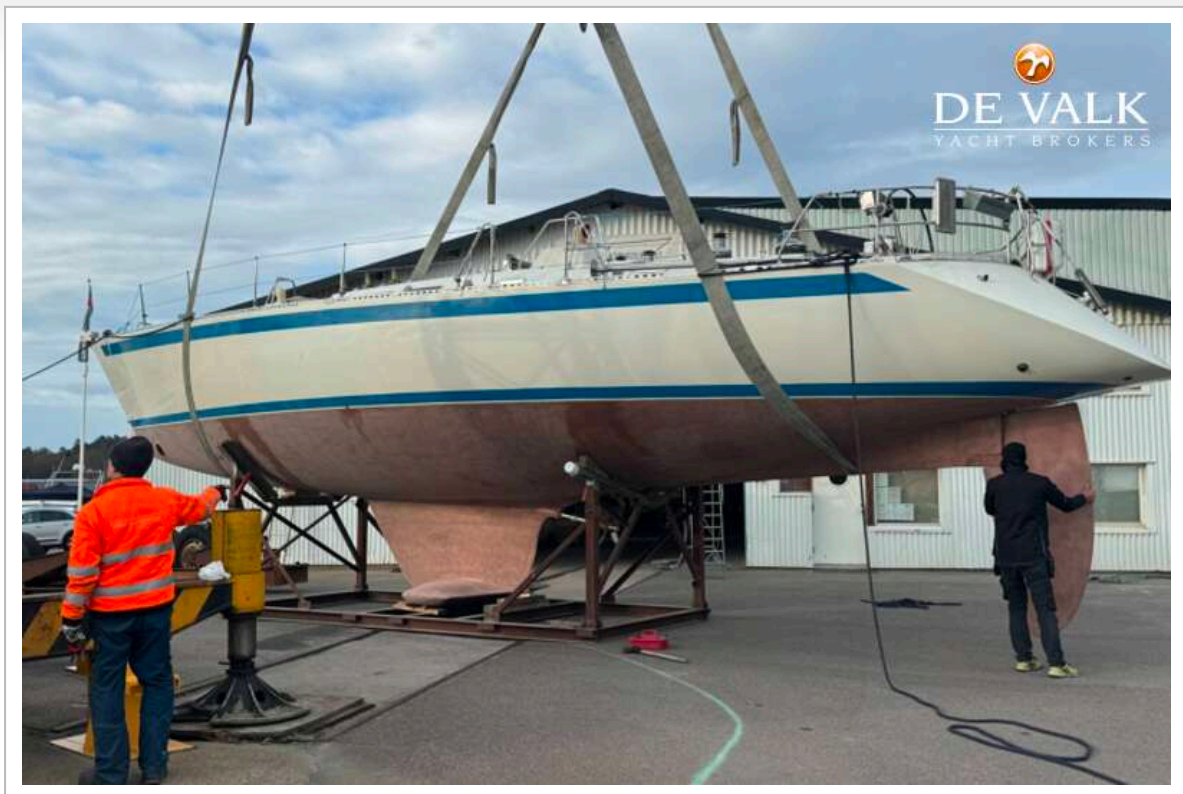
SWEDEN YACHTS 50



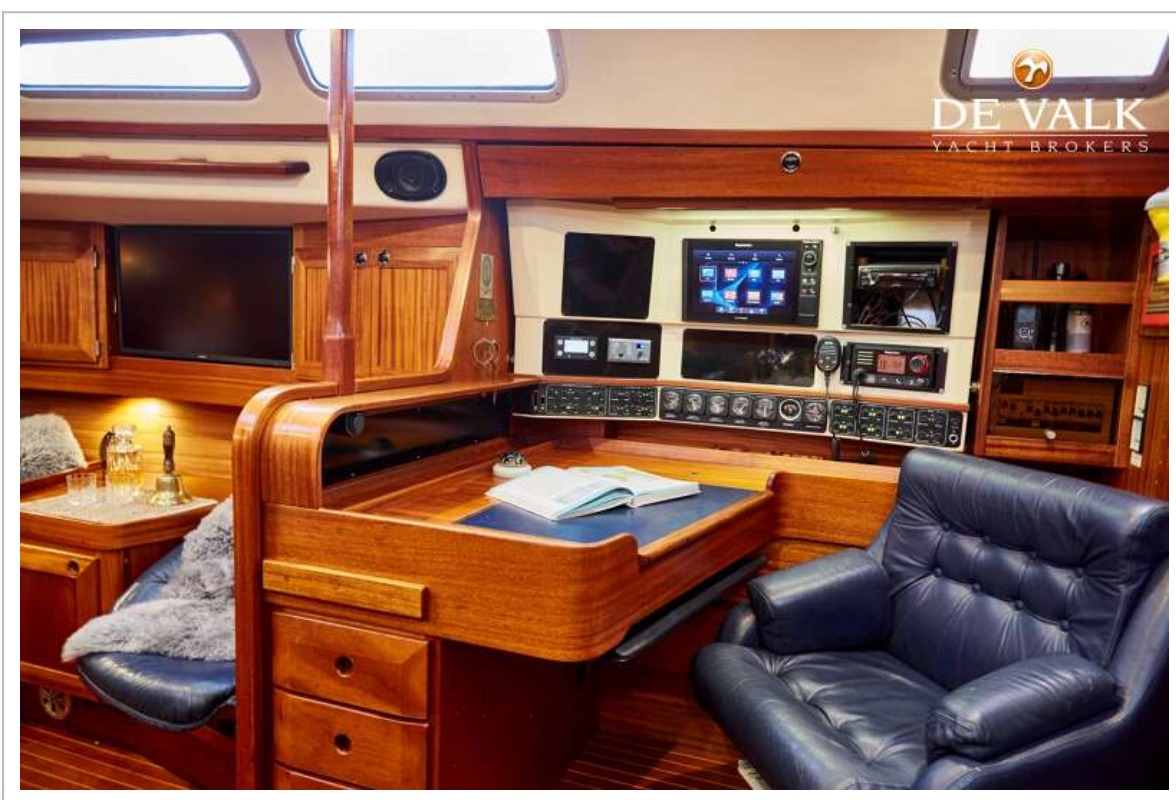








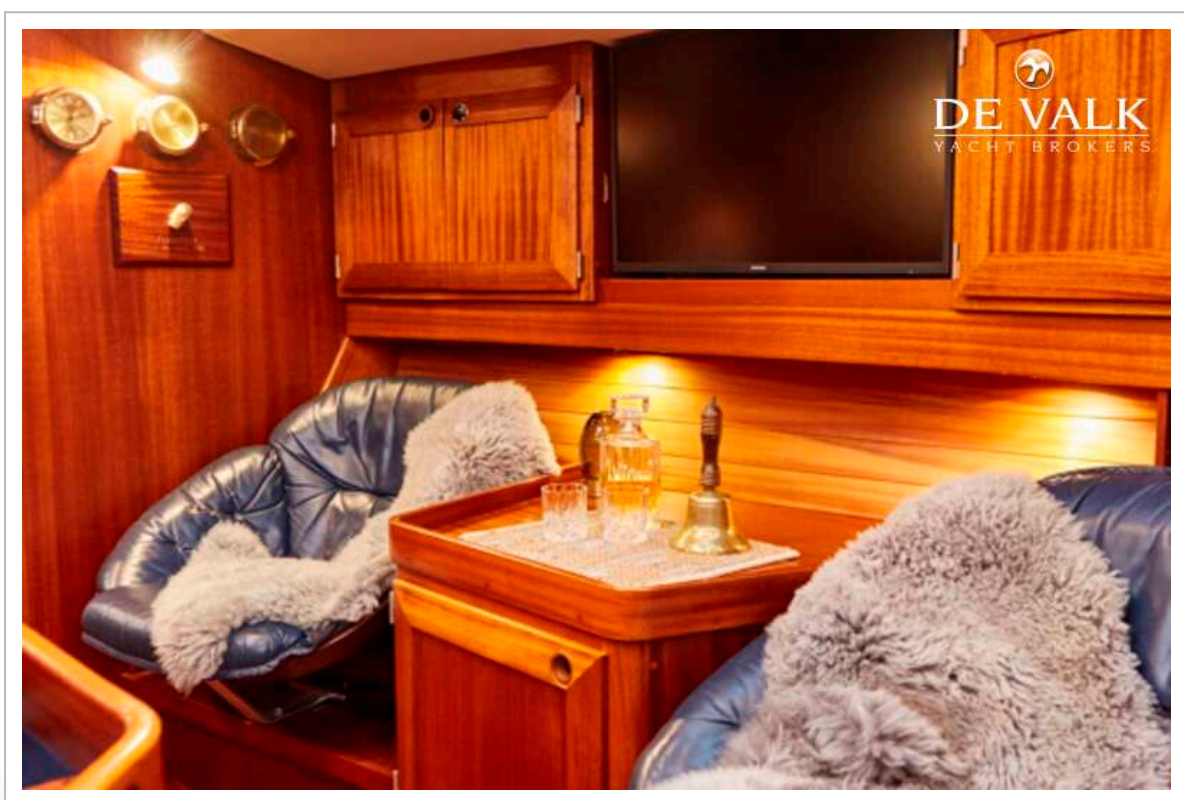
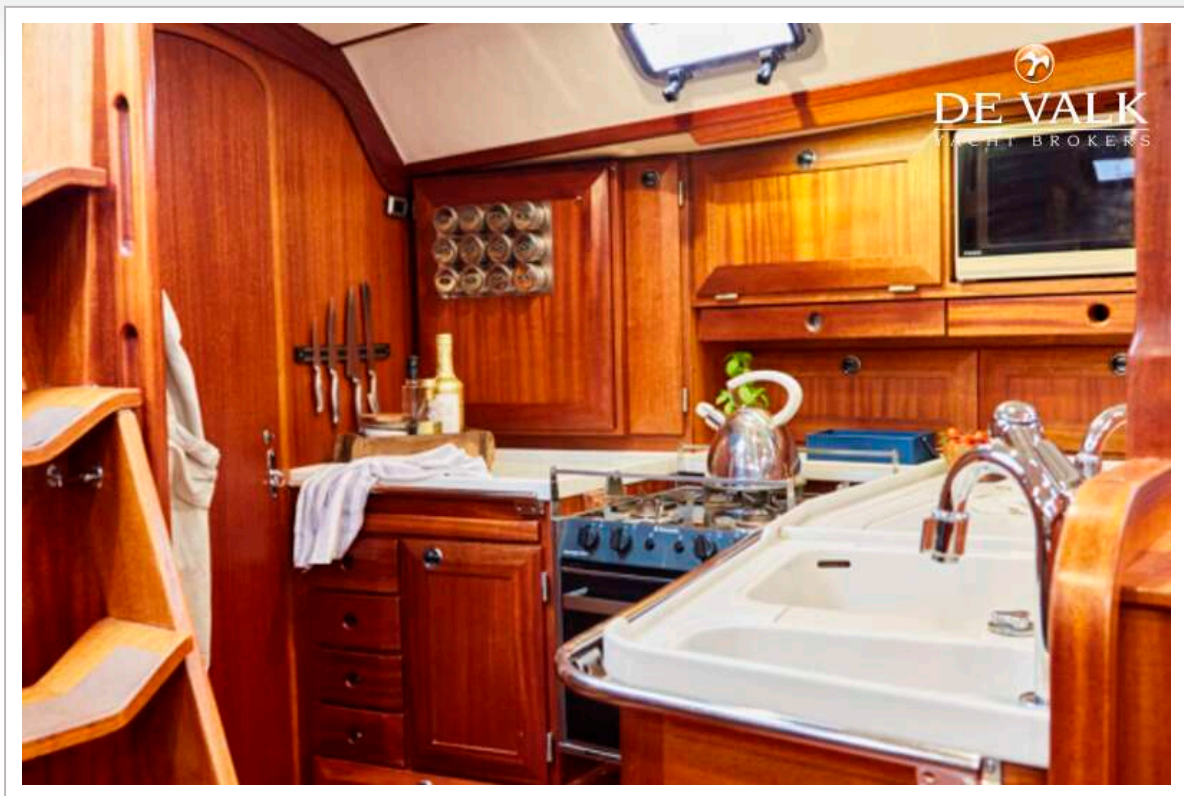
SWEDEN YACHTS 50



SWEDEN YACHTS 50



SWEDEN YACHTS 50



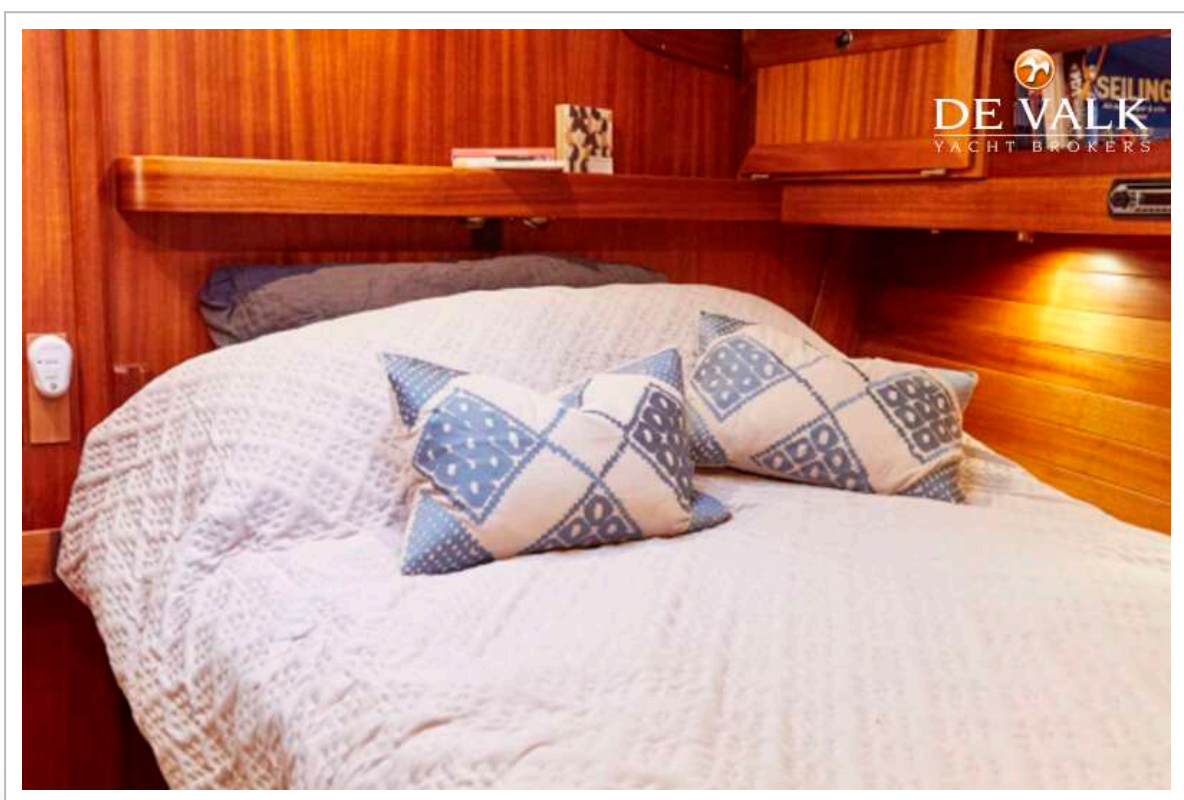
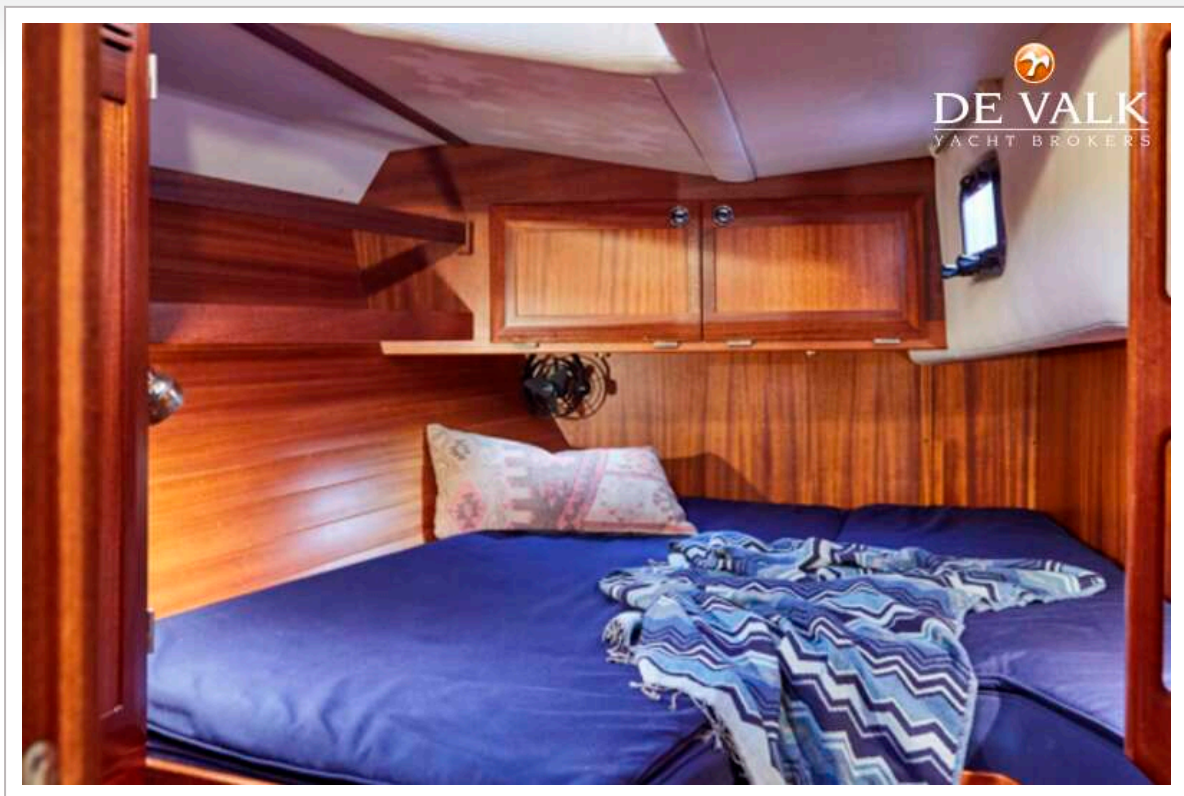
SWEDEN YACHTS 50



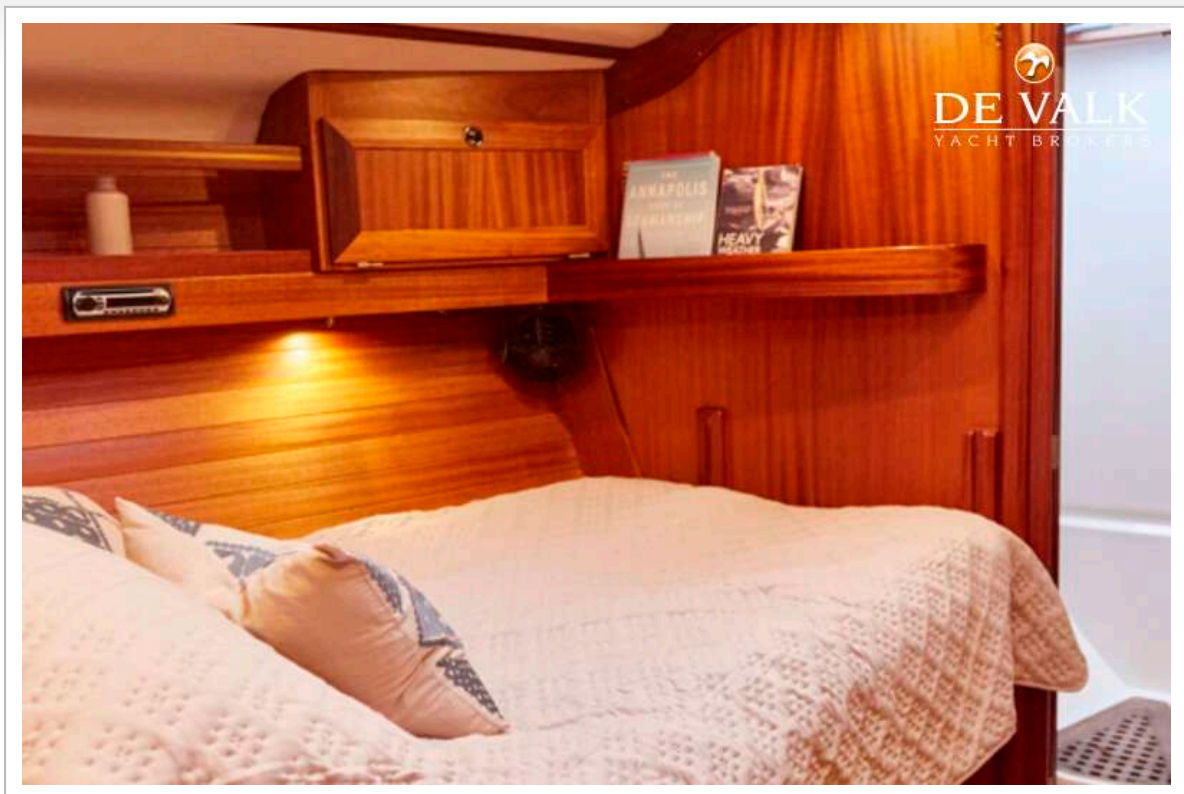
SWEDEN YACHTS 50

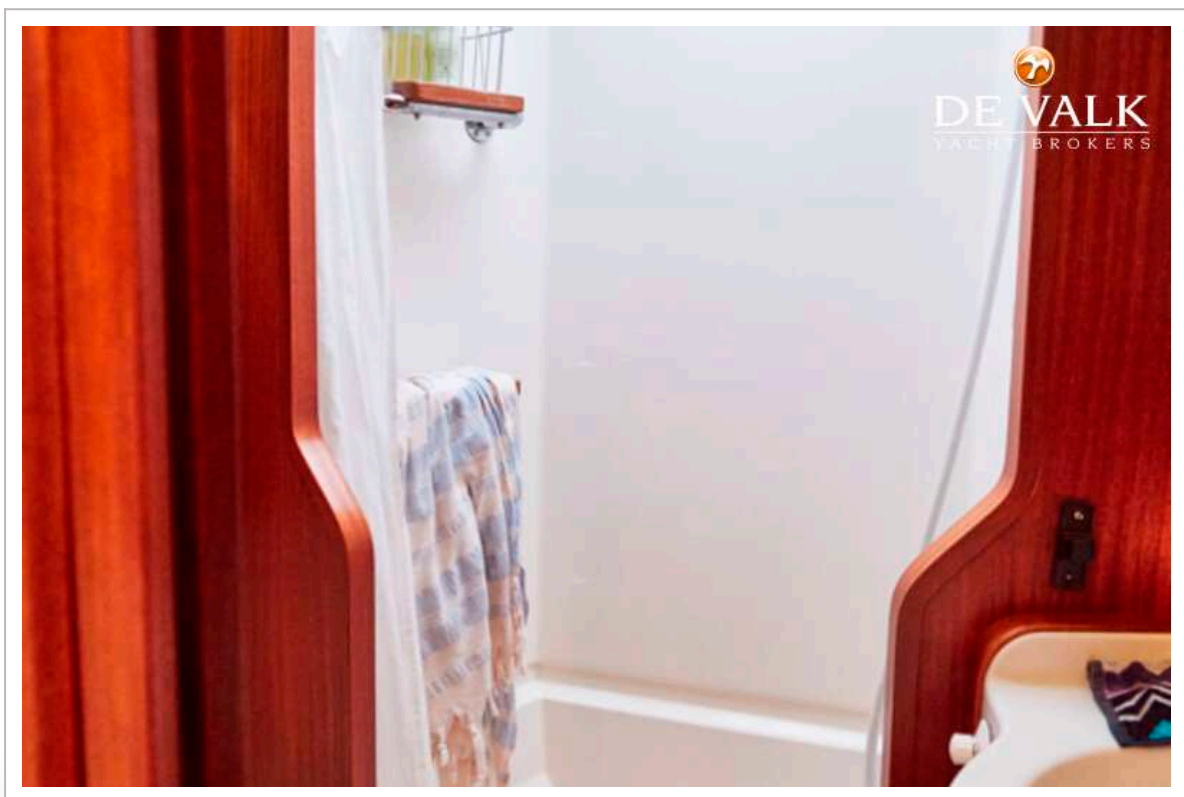
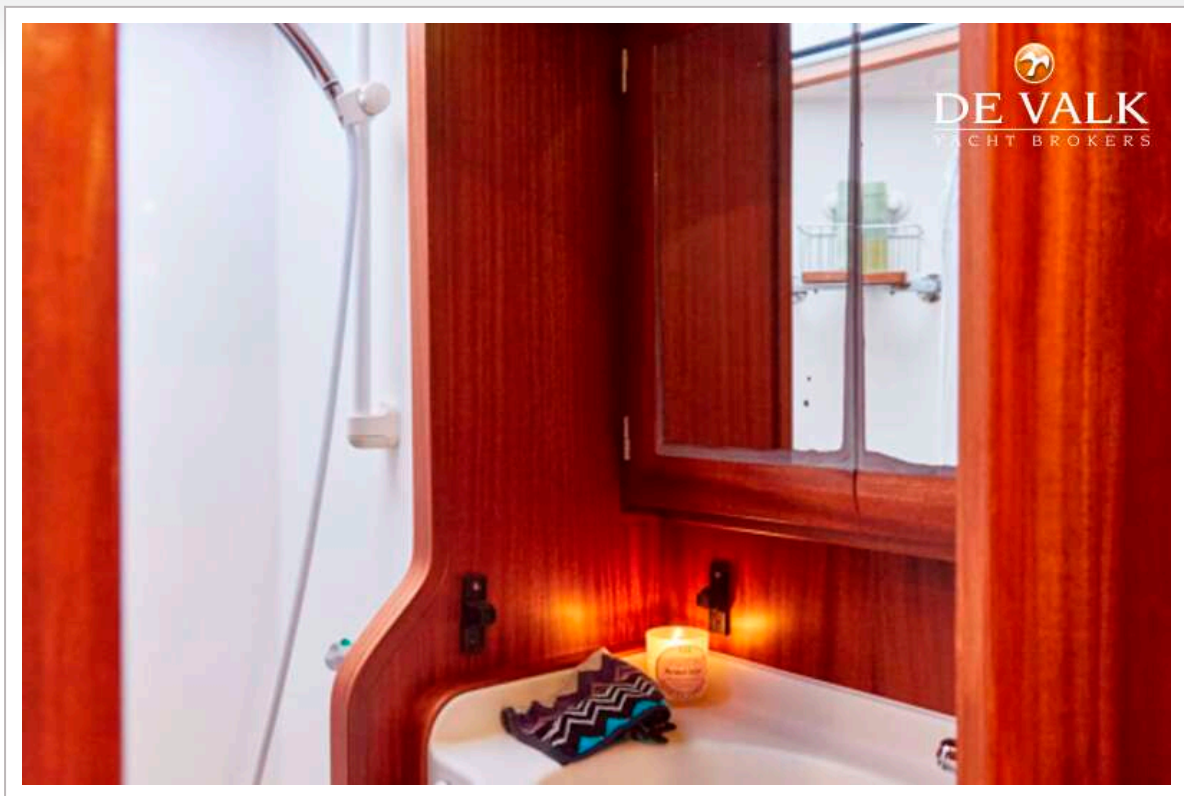


SWEDEN YACHTS 50



SWEDEN YACHTS 50





SWEDEN YACHTS 50

