



DE VALK  
YACHT BROKERS



ALMKOTTER 1280 AK



DE VALK  
YACHT BROKERS

# ALMKOTTER 1280 AK

## BROKER'S COMMENTS

A beautiful, robust Almkotter 12.80 from 2000 from the second owner. Built by Jachtbouw De Alm, which is known for its quality ships. This ship has many options, including a hydraulic bow thruster. With her two reliable Iveco engines, the ship is ideal for maneuvering. She was completely repainted in 2022. This elegant spitsail cutter is waiting for her new owner. From now on to view in Loosdrecht! Make an appointment now!

*Mark Hesselmans*

## SPECIFICATIONS

<b>Dimensions</b>	12.80 x 4.20 x 1.25 (m)	<b>Builder</b>	Jachtbouw De Alm
<b>Built</b>	2000	<b>Cabins</b>	2
<b>Material</b>	Steel	<b>Berths</b>	4
<b>Engine(s)</b>	2 x Iveco diesel	<b>Hp/Kw</b>	2 x 80.00 (hp), 58.88 (kw)
<b>Asking price</b>	Under Offer (VAT )	<b>Lying</b>	at sales office

## CONTACT

<b>Sales office</b>	De Valk Loosdrecht	<b>Telephone</b>	+31 35 582 90 30
<b>Address</b>	't Breukeleveense Meentje 6 1231 LM Loosdrecht / Wijdmeren The Netherlands	<b>E-mail</b>	loosdrecht@devalk.nl

## DISCLAIMER

These particulars are given in good faith as supplied but cannot be guaranteed.



# ALMKOTTER 1280 AK

## GENERAL

<b>Model</b>	ALMKOTTER 1280 AK
<b>Type</b>	motor yacht
<b>LOA (m)</b>	12,80
<b>Beam (m)</b>	4,20
<b>Draft (m)</b>	1,25
<b>Air draft (m)</b>	5,80
<b>Air draft min (m)</b>	2,95
<b>Headroom (m)</b>	2,00
<b>Year built</b>	2000
<b>Builder</b>	Jachtbouw De Alm
<b>Country</b>	The Netherlands
<b>Displacement (t)</b>	23
<b>CE norm</b>	B
<b>Hull material</b>	steel
<b>Hull colour</b>	blue
<b>Hull shape</b>	hard chine
<b>Superstructure material</b>	steel
<b>Rubbing strake</b>	rubber
<b>Deck material</b>	steel
<b>Deck finish</b>	non-skid paint
<b>Superstructure deck finish</b>	paint
<b>Cockpit deck finish</b>	teak
<b>Window frame</b>	aluminium
<b>Window material</b>	double glazing Partially
<b>Deckhatch</b>	yes
<b>Portholes</b>	aluminium
<b>Mast can be lowered</b>	hydraulic
<b>Fuel tank (litre)</b>	steel 1200
<b>Level indicator (fuel tank)</b>	VDO
<b>Freshwater tank (litre)</b>	stainless steel 2x 500



# ALMKOTTER 1280 AK

Level indicator (freshwater)	VDO (defect)
Blackwater tank (litre)	stainless steel 1x 250
Level indicator (blackwater)	Wema
Greywater tank (litre)	stainless steel 1x 350
Level indicator (greywater)	VDO
Wheel steering	hydraulic
Inside helm position	yes
Outside helm position	hydraulic
More info on paintwork	Completely painted 2022

## ACCOMMODATION

Cabins	2
Berths	4
Floor	yes
Aft deck	yes
Saloon	yes
Headroom saloon (m)	1,90
Heating	central heating Kabola CV
Air-conditioning	yes
Aft Cabin	yes
Dinette	yes
Opening door to aft deck	yes
Galley	yes
Countertop	plastic
Sink	stainless steel
Cooker	electric 4 pits
Microwave/oven combi	Sharp R-951
Fridge	2x 120 l
Freezer	120 l
Hot water system	on central heating Kabola CV
Water pressure system	electrical



# ALMKOTTER 1280 AK

<b>Kettle</b>	Russel Hobbs
<b>Coffee maker</b>	Nespresso
<b>Owners cabin</b>	double bed
<b>Bed length (m)</b>	2,00 m
<b>Wardrobe</b>	hanging and shelves
<b>Bathroom</b>	en suite
<b>Toilet</b>	en suite
<b>Toilet system</b>	electric
<b>Wash basin</b>	in the bathroom
<b>Shower</b>	en suite
<b>Bath tub</b>	en suite
<b>Guest cabin 1</b>	bunk bed
<b>Bed length (m)</b>	1,80 m
<b>Wardrobe</b>	drawers and shelves
<b>Bathroom</b>	en suite
<b>Toilet</b>	en suite
<b>Toilet system</b>	electric
<b>Wash basin</b>	in the bathroom
<b>Shower</b>	en suite
<b>Washing machine</b>	Candy Alise

## MACHINERY

<b>No of engines</b>	2
<b>Make</b>	Iveco
<b>HP</b>	80
<b>kW</b>	58.88
<b>Fuel</b>	diesel
<b>Maximum speed (kn)</b>	8
<b>Cruising speed (kn)</b>	6
<b>Engine cooling system</b>	closed keelcooling
<b>Drive</b>	shaft



# ALMKOTTER 1280 AK

Shaft seal	yes
Engine controls	electrical & bowden cable
Gearbox	hydraulic
Bowthruster	hydraulic 10 hp
Exhaust	dry
Thrust bearing	yes
Propeller type	fixed
Propeller shaft material	stainless steel
Electric bilge pump	yes
Electrical installation	12v / 24v / 230v
Generator	dry exhaust Kohler 8kva
Batteries	6x 200A + 1x 60A
Start battery	yes
Service battery	yes
Battery monitor	Mastervolt
Battery charger	Mastervolt 24V 50A
Inverter	Mastervolt 24V 2500W
Shorepower	with cable

## NAVIGATION

Compass	Contest
Electric compass	Raymarine
Depth sounder	Raytheon ST60
Log	Raytheon ST60
Windset	Raytheon
VHF	Shipmate RS 8300
Autopilot	Raymarine RPG50
Rudder angle indicator	Raytheon
Radar	Raytheon RL70
Plotter/GPS	Raytheon RCG30
Navtex	NASA Marine



Navigation lights yes

## EQUIPMENT

Cockpit cushions	yes
Cockpit table	yes
Boarding ladder	stainless steel
Transom door	yes
Anchor	yes
Anchor chain	yes
Windlass	hydraulic
Windlass aft	manual
Deck wash	yes
Sea railing	stainless steel
Railing side opening gates	yes
Life raft	Won't be delivered
Wiper	4 x
Horn	air pressure
Fenders	yes
Mooring lines	yes
TV	Philips
Clock - barometer	Stockburger

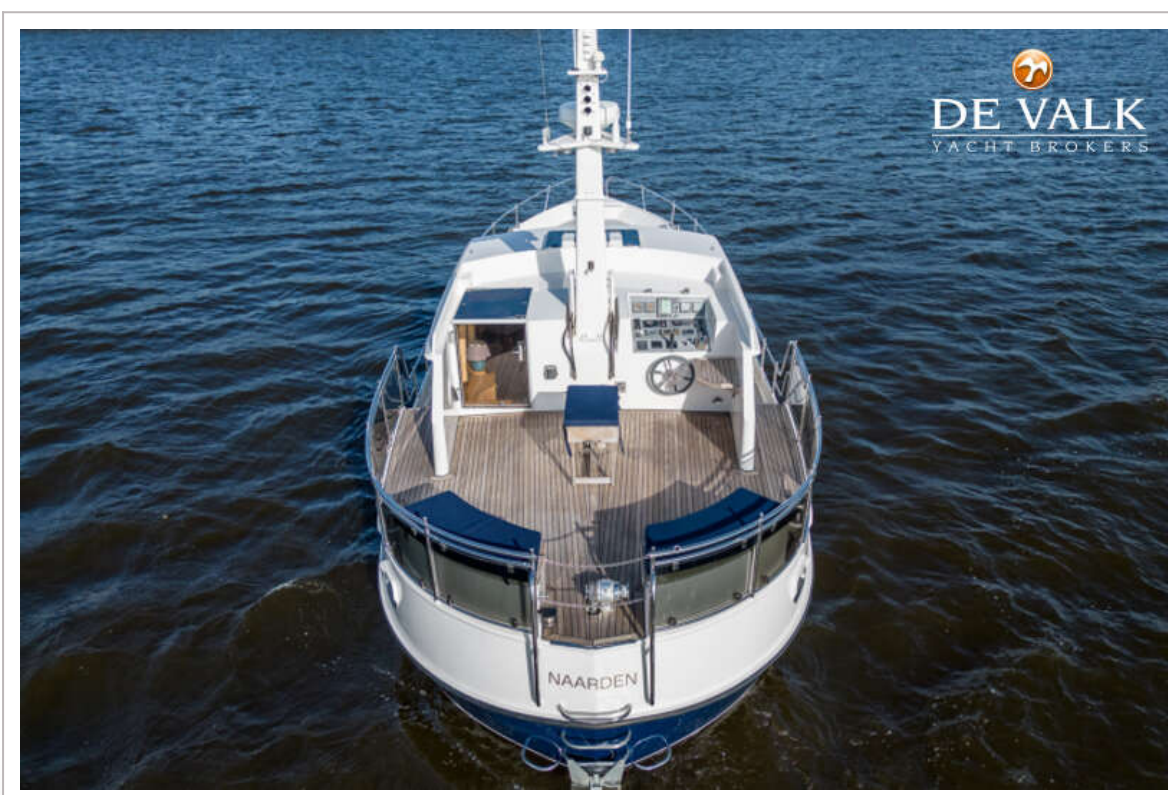


# ALMKOTTER 1280 AK

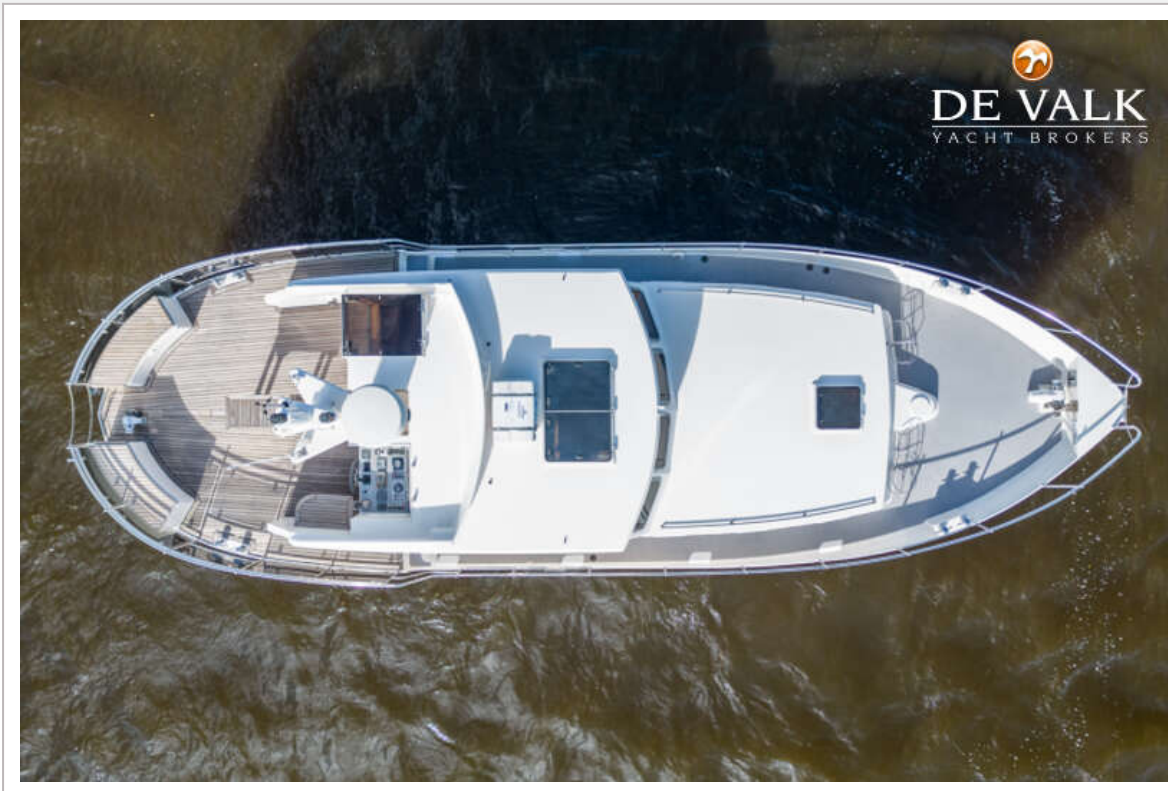




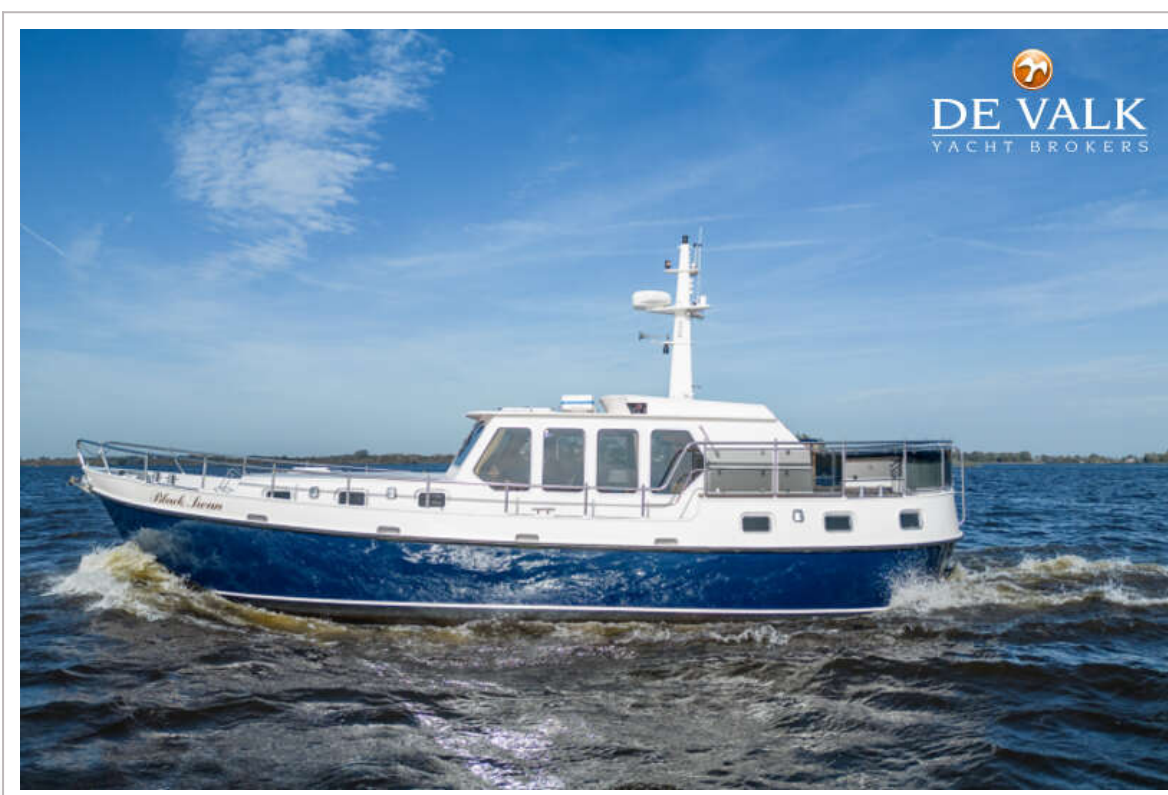
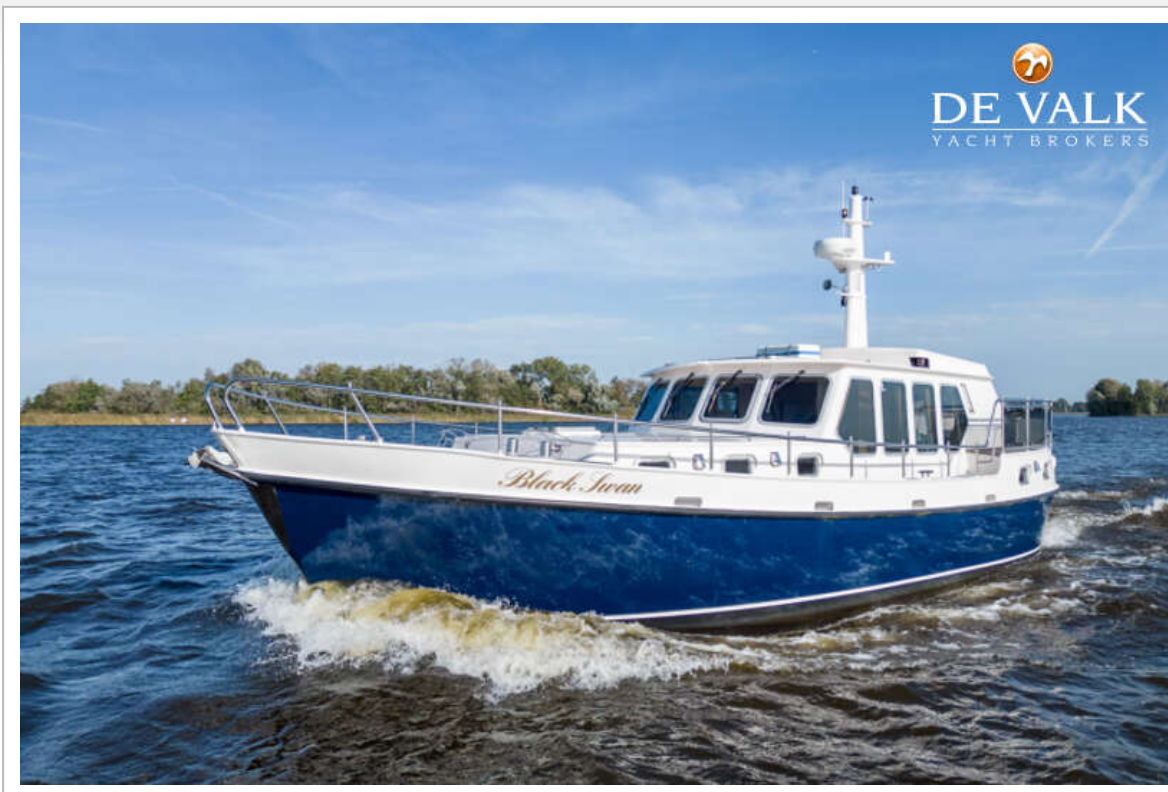
# ALMKOTTER 1280 AK



# ALMKOTTER 1280 AK



# ALMKOTTER 1280 AK



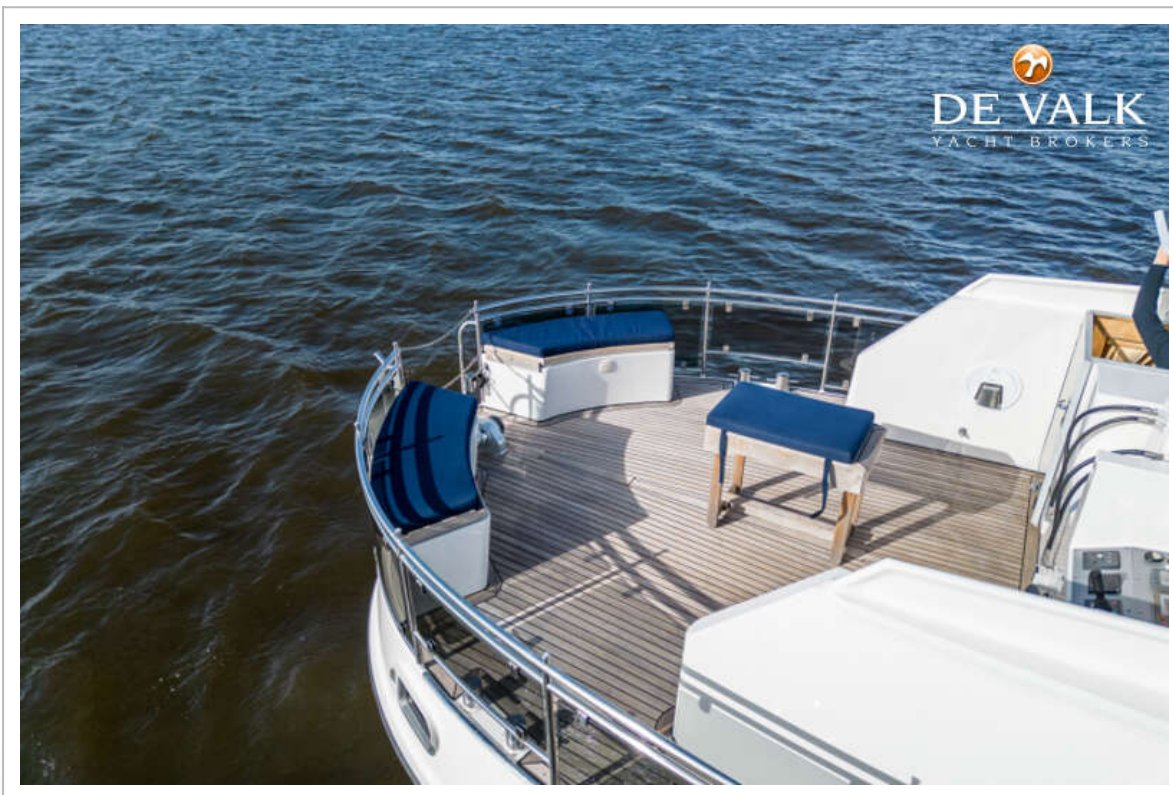
# ALMKOTTER 1280 AK



# ALMKOTTER 1280 AK



# ALMKOTTER 1280 AK



# ALMKOTTER 1280 AK



# ALMKOTTER 1280 AK

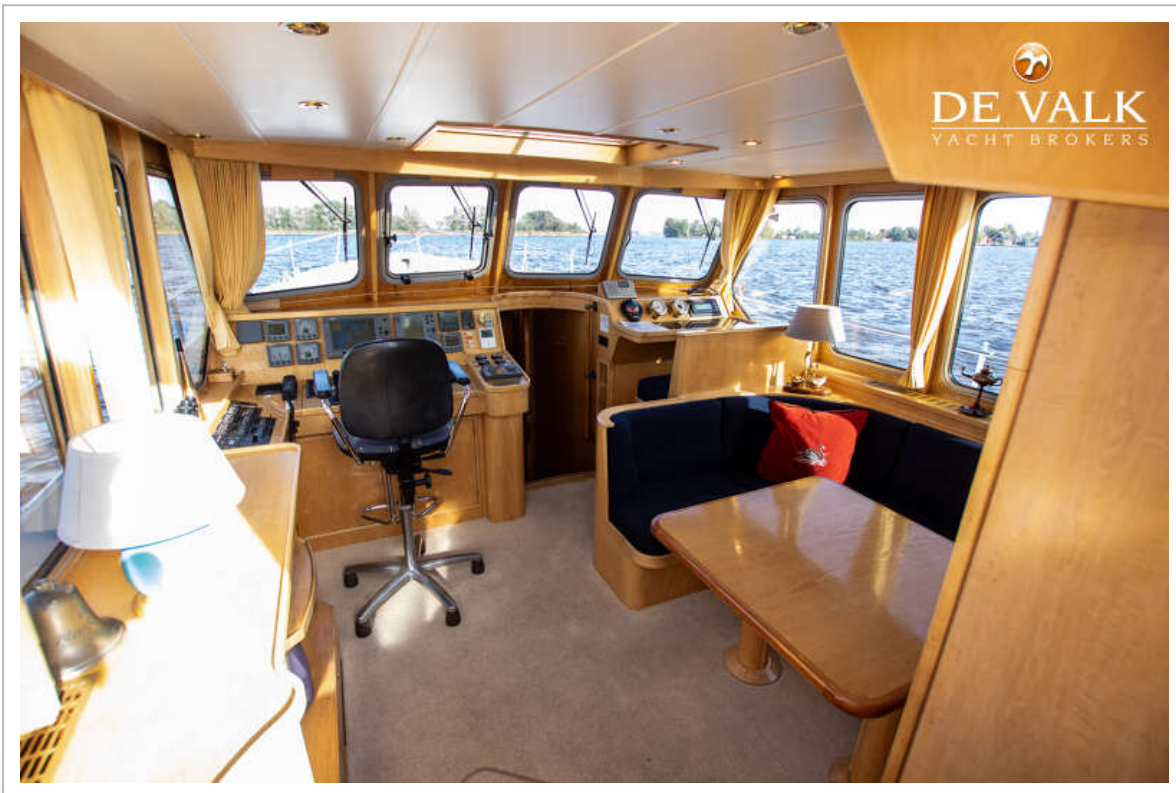
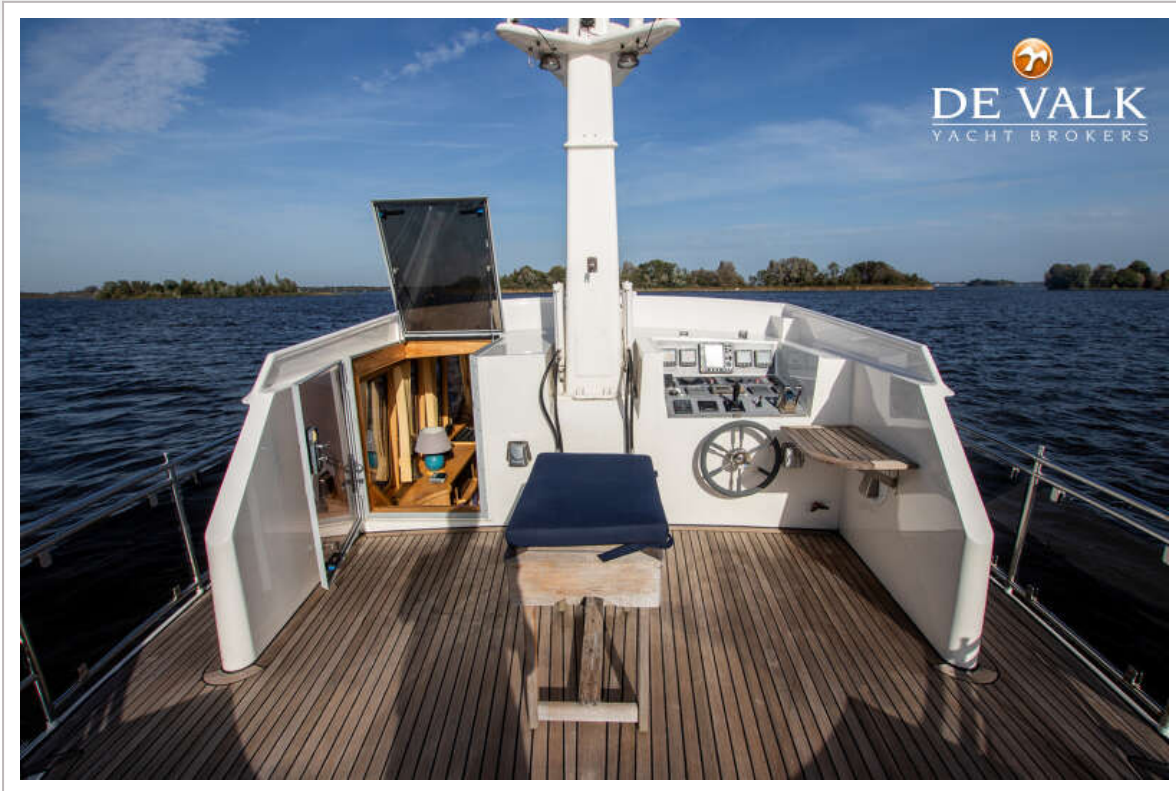




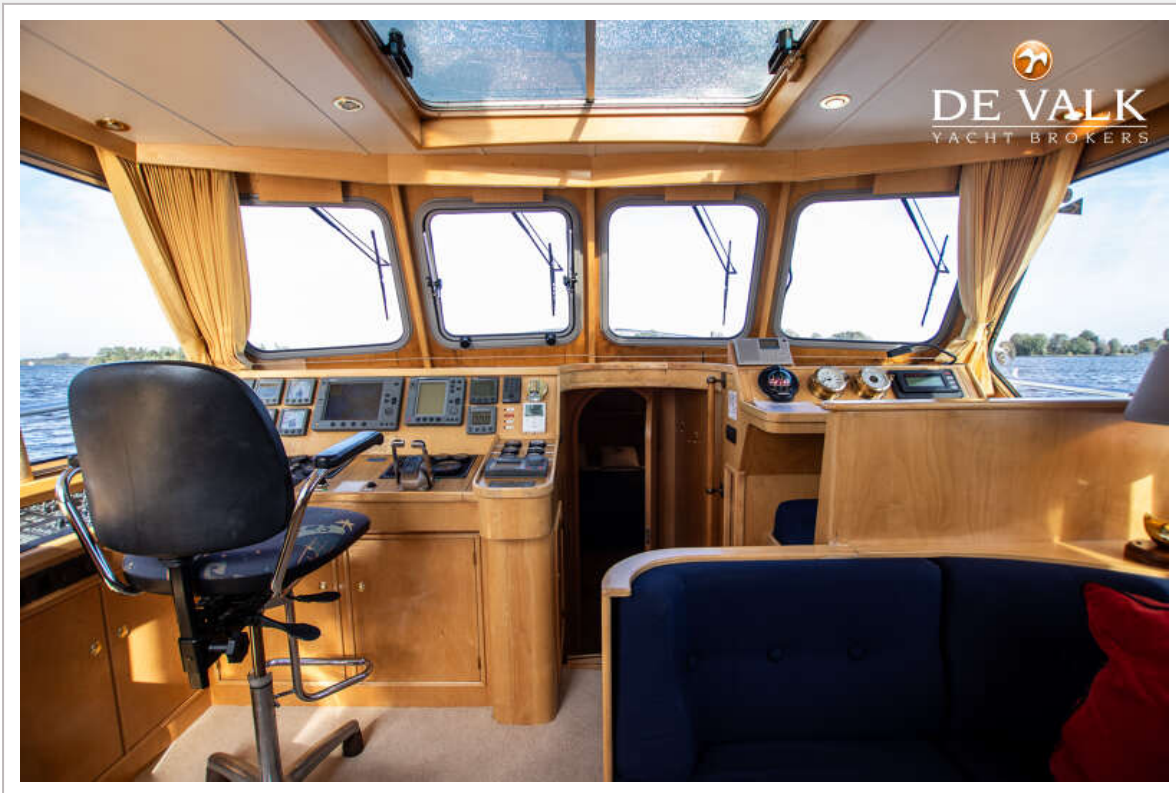
# ALMKOTTER 1280 AK



# ALMKOTTER 1280 AK



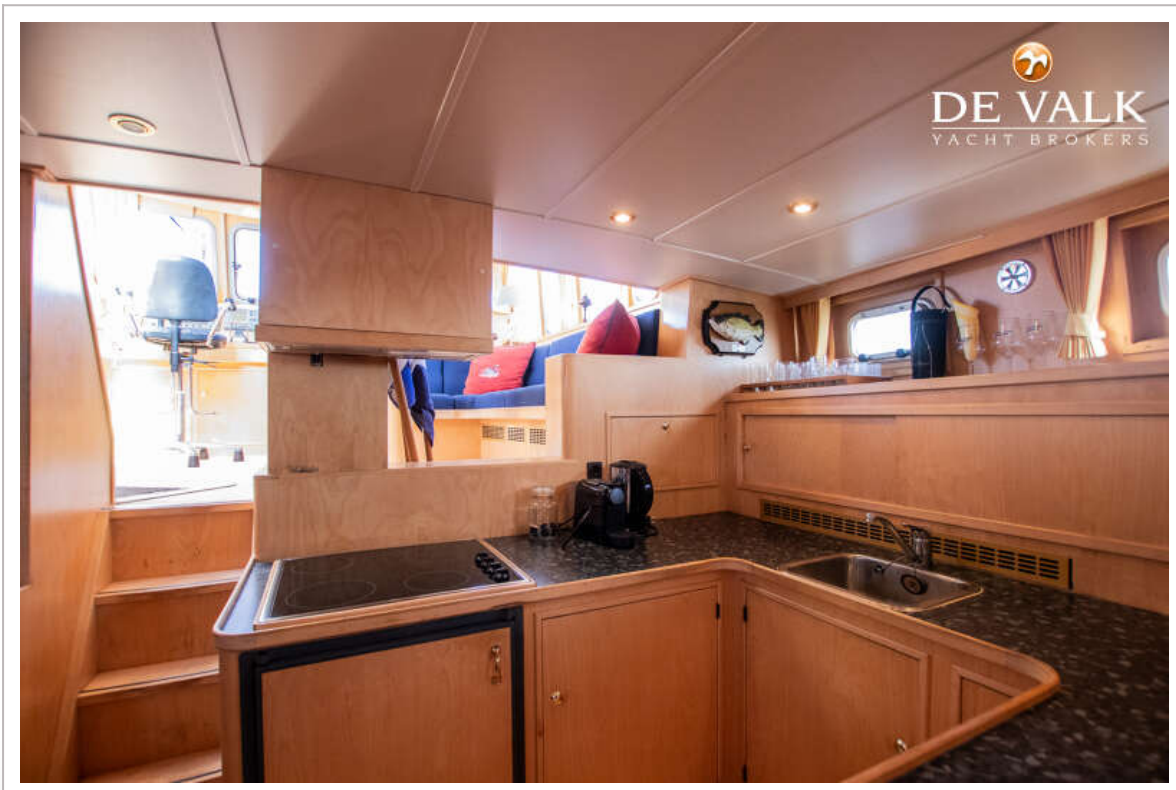
# ALMKOTTER 1280 AK



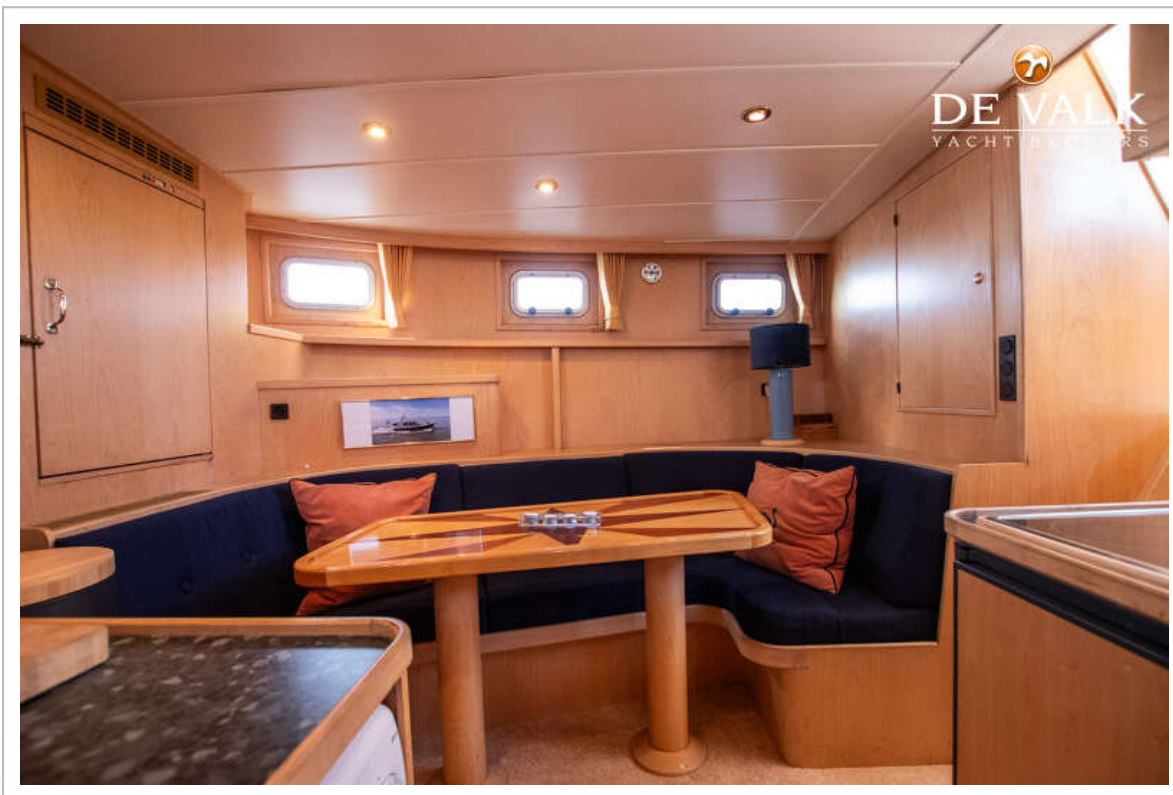
# ALMKOTTER 1280 AK



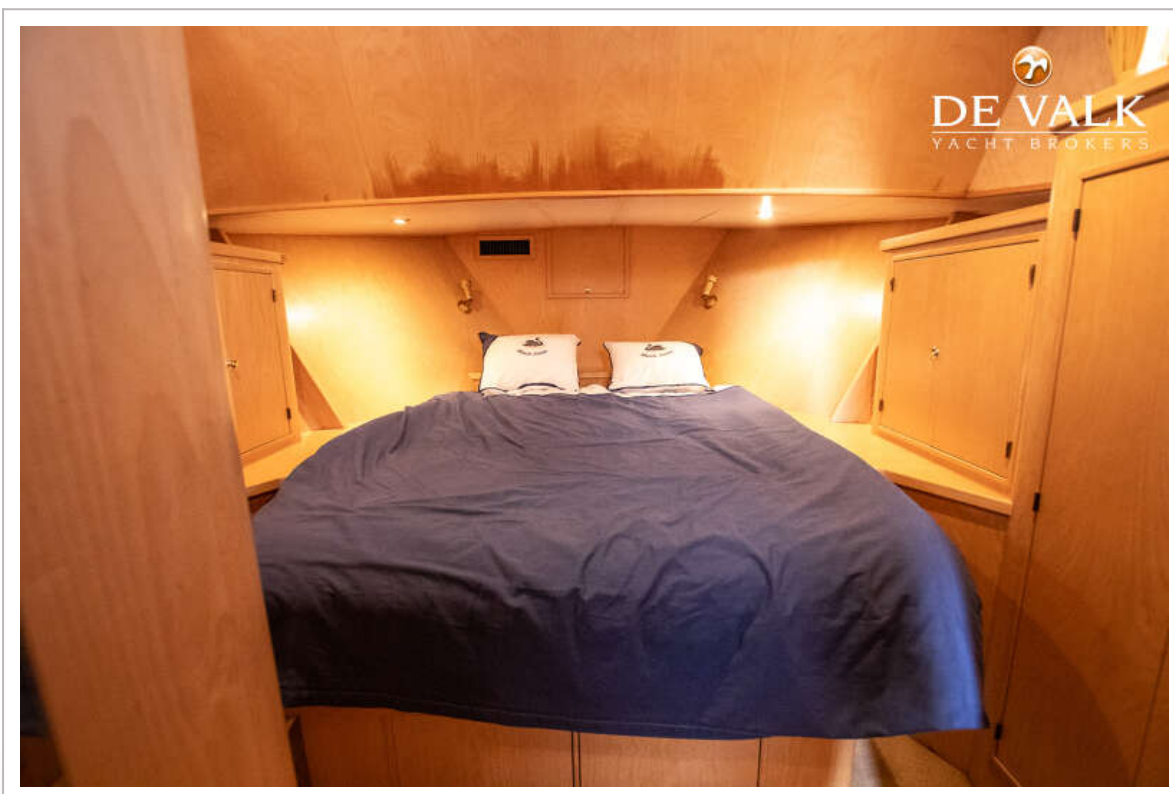
# ALMKOTTER 1280 AK



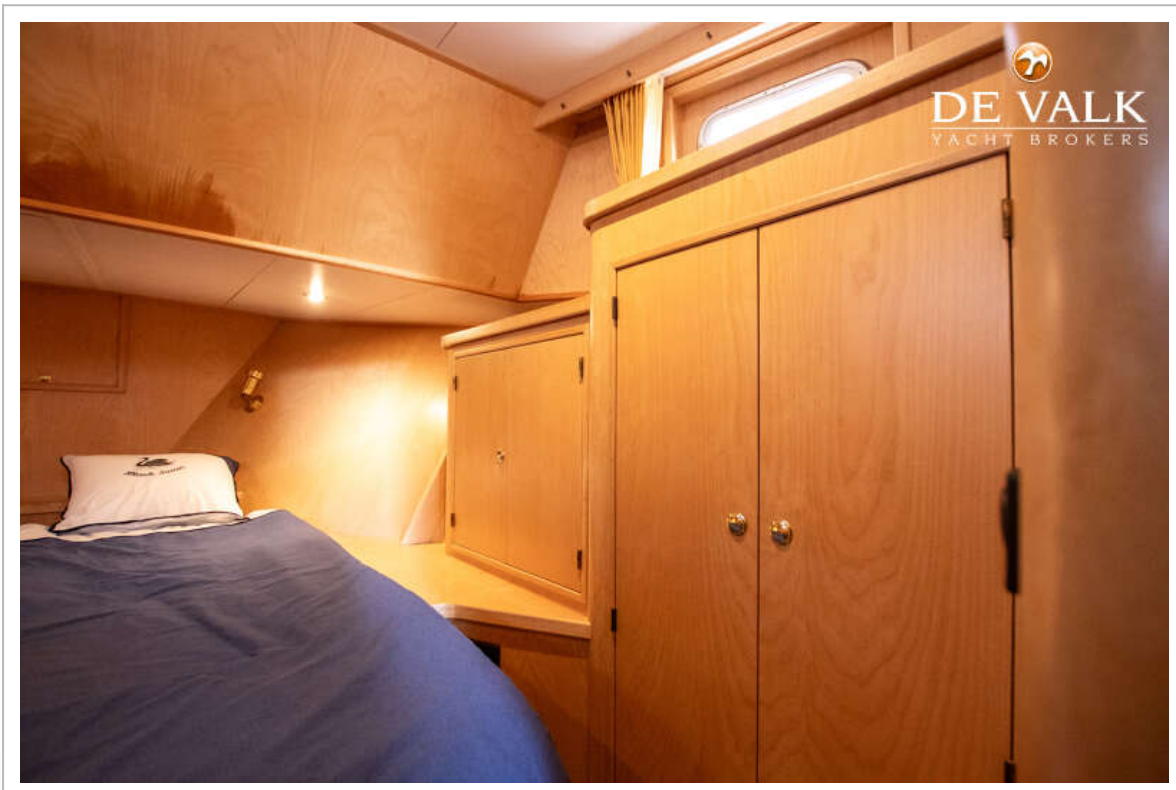
# ALMKOTTER 1280 AK



# ALMKOTTER 1280 AK

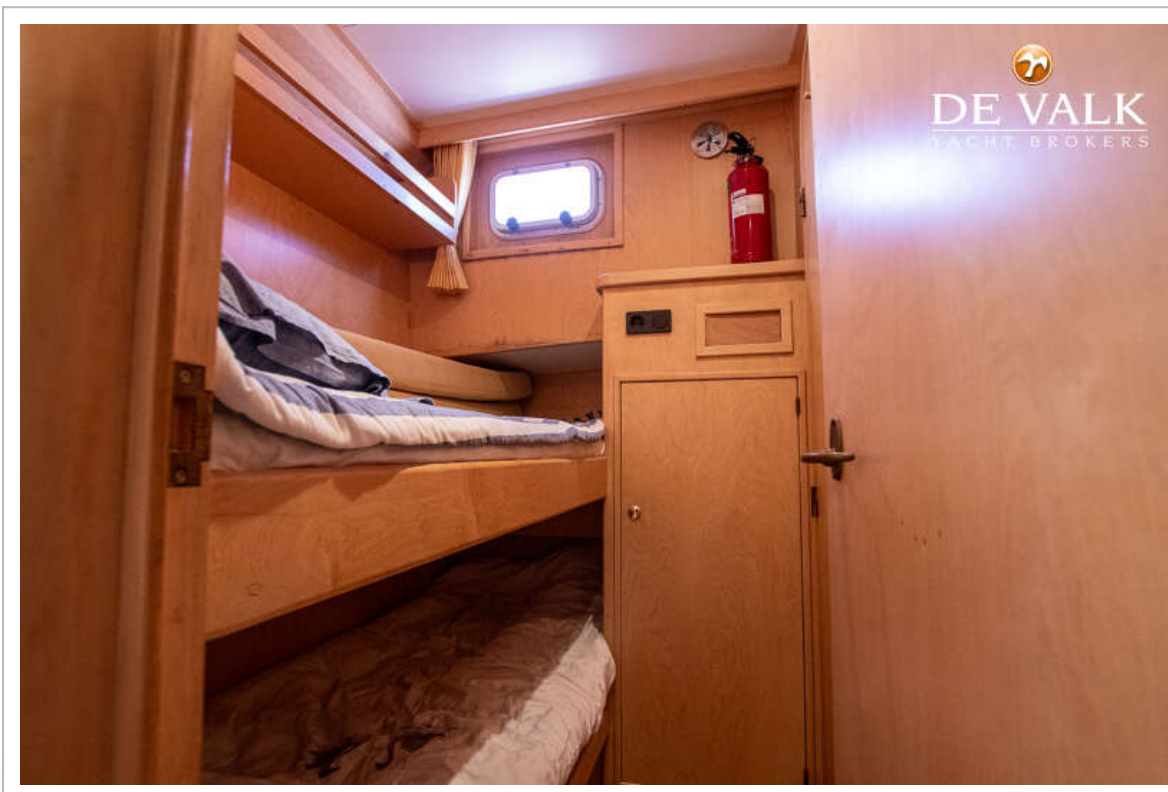
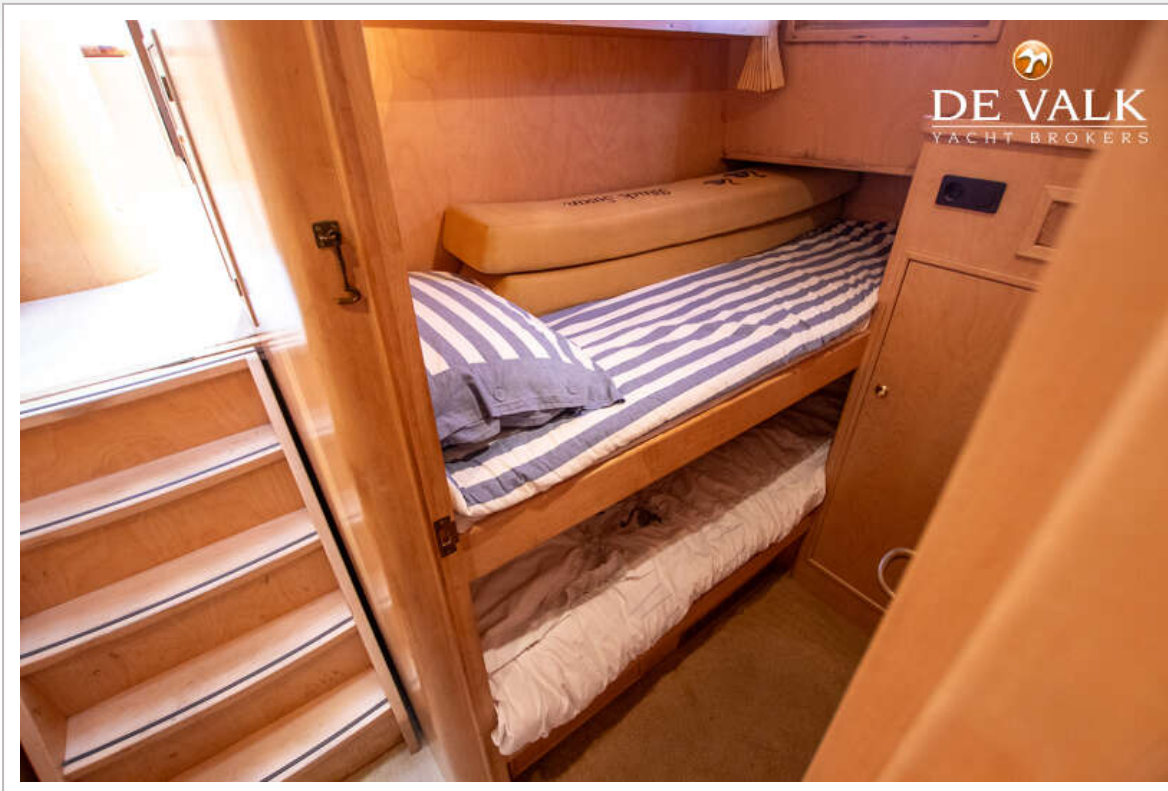


# ALMKOTTER 1280 AK

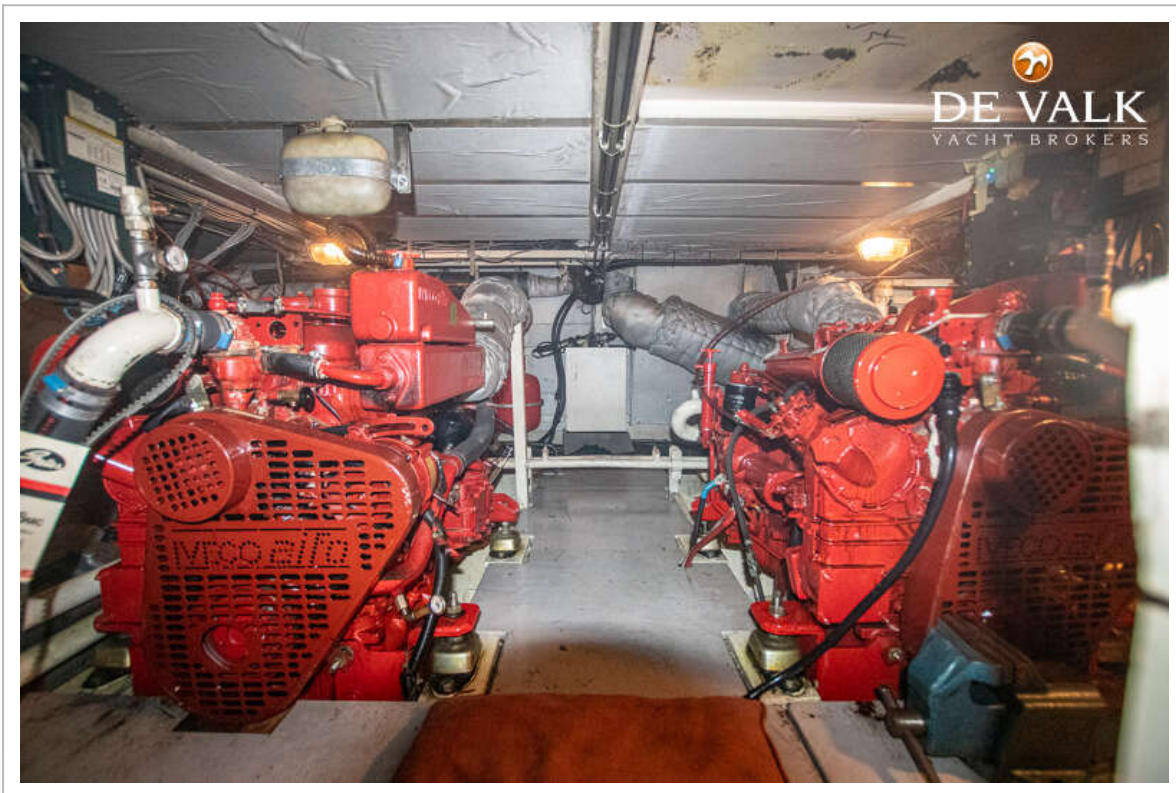
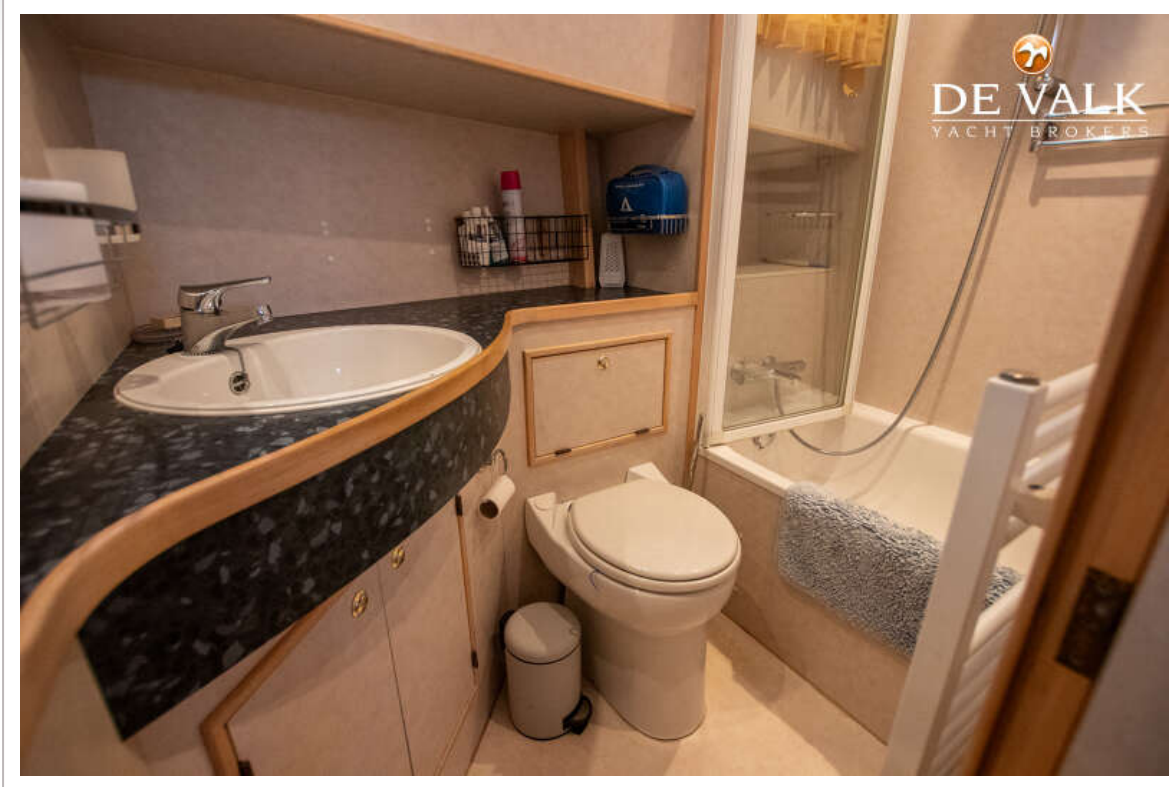




# ALMKOTTER 1280 AK



# ALMKOTTER 1280 AK



# ALMKOTTER 1280 AK

