



VAN DE STADT 44 SATELITE LIFT KEEL



DE VALK
YACHT BROKERS

VAN DE STADT 44 SATELITE LIFT KEEL

BROKER'S COMMENTS

"Tyfoon" is a well balanced yacht, stiff, strong and relatively lightweight hull. A hydraulic lifting keel with 1.64 M. min. / 2.84 M. max draft which makes this yacht versatile and unique. Comfortable inland and blue water cruising, speed and even exploring the Arctic waters, you can do it all. VW 60 HP diesel engine and retractable bow thruster, two cabins, bathroom and shower. A lot of recent upgrades, ready to go. Viewing possible on appointment.

Arne Doodeman

SPECIFICATIONS

Dimensions	13.30 x 4.16 x 1,64 / 2.84 (m)	Builder	
Built	2008	Cabins	2
Material	Epoxy and foam core	Berths	6
Engine(s)	1 x VW marine SDi-4 diesel	Hp/Kw	60.00 (hp), 44.16 (kw)
Asking price	€ 219.000 (VAT Paid)	Lying	contact Monnickendam

CONTACT

Sales office	De Valk Monnickendam	Telephone	+31 299 65 63 50
Address	Hoogedijk 6 1145 PM Katwoude The Netherlands	E-mail	monnickendam@devalk.nl

DISCLAIMER

These particulars are given in good faith as supplied but cannot be guaranteed.



VAN DE STADT 44 SATELITE LIFT KEEL

GENERAL

Model	VAN DE STADT 44 SATELITE LIFT KEEL
Type	sailing yacht
LOA (m)	13,30
LWL (m)	11,50
Beam (m)	4,16
Draft (m)	2,84
Draft min (m)	1,64
Air draft (m)	23,00
Headroom (m)	2,15
Year built	2008
Country	The Netherlands
Designer	Satellite Yacht Design/Kees van de Stadt
Displacement (t)	9,4
Ballast (tonnes)	3,84
CE norm	NA
Hull material	epoxy and foam core
Hull colour	blue
Hull shape	round-bilged
Keel type	lifting keel
Superstructure material	composite
Deck material	composite
Deck finish	non-skid moulded in
Superstructure deck finish	non-skid moulded in
Cockpit deck finish	non-skid moulded in
Antifouling (year)	Coppercoat
Window material	polycarbonate
Deckhatch	4x
Portholes	6x
Insulation	foam
Fuel tank (litre)	epoxy - approx. 300 litre



VAN DE STADT 44 SATELITE LIFT KEEL

Level indicator (fuel tank)	Philippi P-BUS system monitor - tank interface
Freshwater tank (litre)	epoxy - approx. 600 litre
Level indicator (freshwater)	Philippi P-BUS system monitor - tank interface
Blackwater tank (litre)	epoxy - approx. 150 litre
Level indicator (blackwater)	Philippi P-BUS system monitor - tank interface
Wheel steering	Jefa steering system
Emergency tiller	yes
More info on hull	2021 scraping & sanding of the hull under the waterline, new primer and applying new layers Copper coat
Extra info	Hydraulic lifting keel - incl. manual override. Electronic pushbutton keel operation in cockpit. Twin balanced rudder. Performance: speeds of 16+ knots under sail have been clocked !!

ACCOMMODATION

Cabins	2
Berths	6
Interior	beech
Floor	Esthec
Headroom saloon (m)	Approx. 2.15
Heating	central heating Eberspacher
Navigation center	yes
Chart table	yes
Dinette	yes
Galley	with SoftMotion closing drawers
Countertop	Duropal
Sink	stainless steel
Cooker	calor gas Force 10
Oven	Force 10
Fridge	Waeco Coolmatic CB-040 + Waeco Coolmatic RSD-115
Hot water system	on central heating
Water pressure system	electrical



VAN DE STADT 44 SATELITE LIFT KEEL

Owners cabin	v-bed
Bed length (m)	2.00 meter
Wardrobe	hanging and shelves
Bathroom	en suite
Wash basin	yes
Shower	yes
Guest cabin 1	double bed
Wardrobe	hanging and shelves
Toilet	shared
Toilet system	manual
Extra info	Starboard and portside benches can be used as a berth. Owners and aft cabin mattresses with Viva Clip spring/ventilation system.
Extra info	In 2022 indirect LED lighting installed in the floor + LED lighting in de salon and cabins. Reading lamps with USB connector. Indirect lighting can also be illuminated with remote control in several colours.
Extra info	Calor gas system (pipes, hoses, fittings, etc.) new installed in 2022 - (system was not present).
Extra info	New toilets and hoses in 2021.
Extra info	In 2021 a complete new hot water system installed + new taps in kitchen, shower and toilet room + installation of deck shower.
Extra info	Nautic boiler 1200W- 40 litre for warm water, new in 2021. Eberspacher heating new in 2021 Warm water central heating system controlled via thermostat. Independent system, not engine dependent.

MACHINERY

No of engines	1
Make	VW marine
Type	SDi-4
HP	60
kW	44.16
Fuel	diesel



VAN DE STADT 44 SATELITE LIFT KEEL

Engine cooling system	freshwater heat exchanger
Drive	sail-drive
Engine controls	bowden cable Spinlock handle
Gearbox	mechanical VW marine
Bowthruster	electric Sleipner SRV100/185T retractable bow thruster with remote (2024)
Propeller type	Gori overdrive folding propeller.
Propeller blades	3
Manual bilge pump	yes
Electric bilge pump	yes
Electrical installation	12/24/220 V system; new in 2022. Throughout the boat 220V via the inverter. All batteries are connected and equipped with charge controllers, all can be switched on or off. The engine can also be started via the service battery. Automatic main switches in front of each battery bank. Whole system is equipped with automatic fuses.
Generator	3KVA 230 V generator on the main engine.
Start battery	1x Optima Red Top
Service battery	4 x 75 ah AGM 24v, 1x 210 AH gel 12v. All new 2021
Bowthruster battery	2x 105ah AGM new in 2021
Windlass battery	yes
Battery monitor	Philippi P-BUS System Monitor PSM 2 + Suder RCC-02 Remote Control
Battery charger/inverter	Studer Xtender XTH 5000-24 + Studer Xtender XTH 5000-24 + Victron Orion 24/12-70A non isolated DC/DC + Victron Energy Lynx Distributor + CTEk Multi XS 7000
Shorepower	with cable
Extra info	Gori prop overhauled in 2021

NAVIGATION

Electric compass	yes
Multi control display	Exterior navigation "Mirrored" with interior.
Depth sounder/log	yes



VAN DE STADT 44 SATELITE LIFT KEEL

Windset	Garmin - new in 2021
VHF	Garmin VHF 215 + AIS inside and Garmin GHS 11i, incl. AIS handset outside - both new 2022
VHF handheld	Garmin GHS 11i, incl. AIS - new 2022
Autopilot	Garmin GHC-20 display + JEF A - DU TS6 electronic transmission drive - new in 2021
Radar	Garmin Fantom - new in 2021
Radar/GPS/plotter	Garmin GPSMAP 1222 PLUS - 12 inch - new 2022
Electronic chart(s)	Garmin Blue Charts Alborg/Amsterdam - new 2021
Navigation lights	all LED - new in 2022
Extra info	New custom made Stainless Steel pedestal + Scanstrut helmpod installed in 2022.

EQUIPMENT

Sprayhood	new in 2021
Deck shower	with warm and cold water - new in 2021
Anchor	Ultra 21 KG (46 LBS) 316 Stainless Steel (2022)
Anchor chain	10 mm. Stainless Steel - new 2022
Windlass	electrical - Loftrans (2022)
Sea railing	wire
Grab rail (superstructure)	teak
Railing side opening gates	2x
Pushpit	yes
Pulpit	yes
Danbuoy	yes
Horn	electric
Fenders	yes
Mooring lines	yes
TV	Telefunken LCD multi display on swivel-arm. Connected with JVC multimedia player. Also to be used as navigation display. New 2022.
Radio-cd player	- DVD player JVC KW-V2550 DBT - 6,2" touch screen multimedia - new in 2022



Speakers in salon

2 X Fusion 60W - new in 2022

Extra info

LED cockpit lights (6 x), LED lights at steering pedestal + LED deck lights (2 x) in mast installed in 2022.

RIGGING

Standing rigging

Rod

Brand mast

John mast

Material mast

aluminium

Spreaders

3x

Reefing System

quick-one-line-reefing

Boomvang

mechanical and tackle

Primary sheet winch

2x Andersen 46ST - 2 speed

Secondary sheet winch

2x Andersen 58ST - 2 speed

Multifunctional winches

2 x Andersen 46ST - 2 speed

Gennaker pole

carbon

Extra info

Mainsail: Gaastra Custom Axis Laminate with batten. Category: 3 Technora 60 m2. Full batten upgrade incl. battcars. Three reefing points. Laminated radiale corners, clew, tack and head. Control lines in leech and foot. Jib Gaastra High aspect Custom Axis Laminate with batten. Categorie: 2 Technora. 37 m2. Tray dacron UV protection. Laminated radiale corners. Control lines in leech and foot. Gaastra Gennaker 150 m2. Mainsail and Jib are of high quality can be used in light and heavy weather. All sails are used very little.

Extra info

Mast en stays inspected in 06-2024. Harken Furl system MKIV Unit 3 - through deck operated from the cockpit. Inner forestay is available - never used. Two running backstays. Winches can be converted to electrical units. Deck blocks all Ronstan ballbearing and high quality. Ronstan tracks 30 series. Ronstan ball bearing travellers with control sheaves. Ronstan ball bearing sheave for sheets. Line clamps Spinlock.



VAN DE STADT 44 SATELITE LIFT KEEL



VAN DE STADT 44 SATELITE LIFT KEEL



VAN DE STADT 44 SATELITE LIFT KEEL



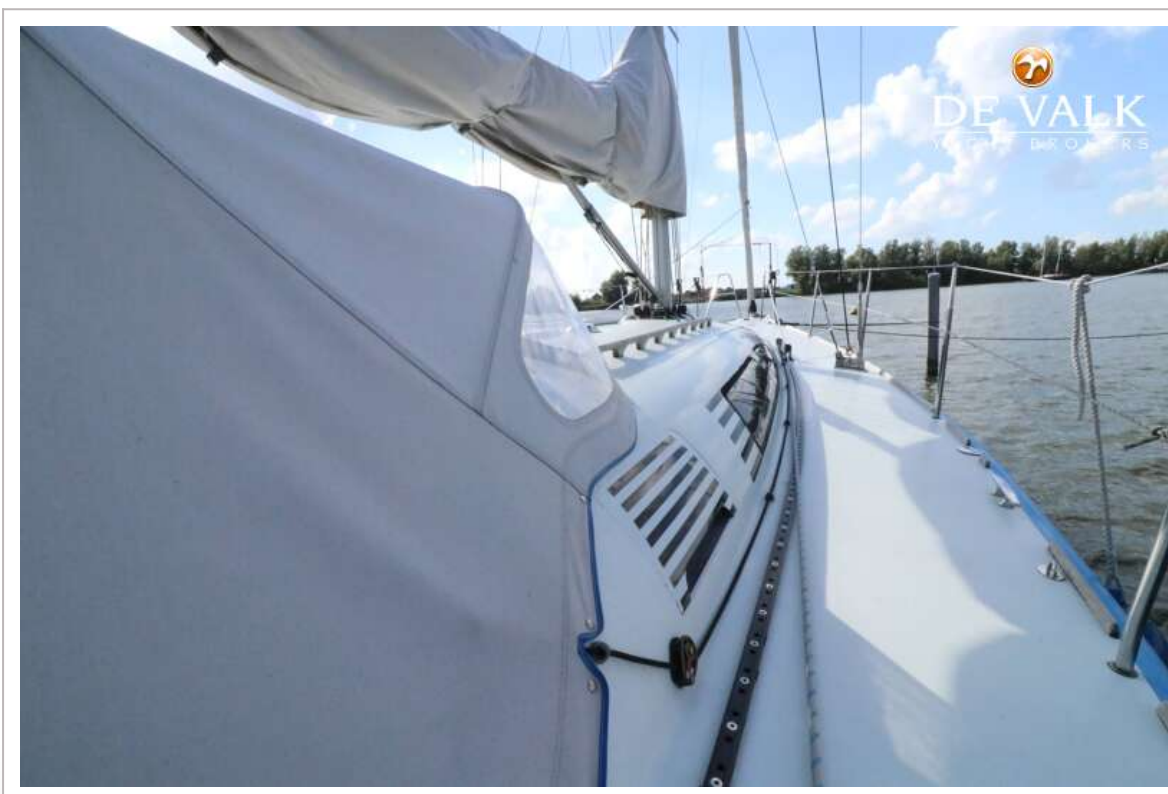
VAN DE STADT 44 SATELITE LIFT KEEL



VAN DE STADT 44 SATELITE LIFT KEEL



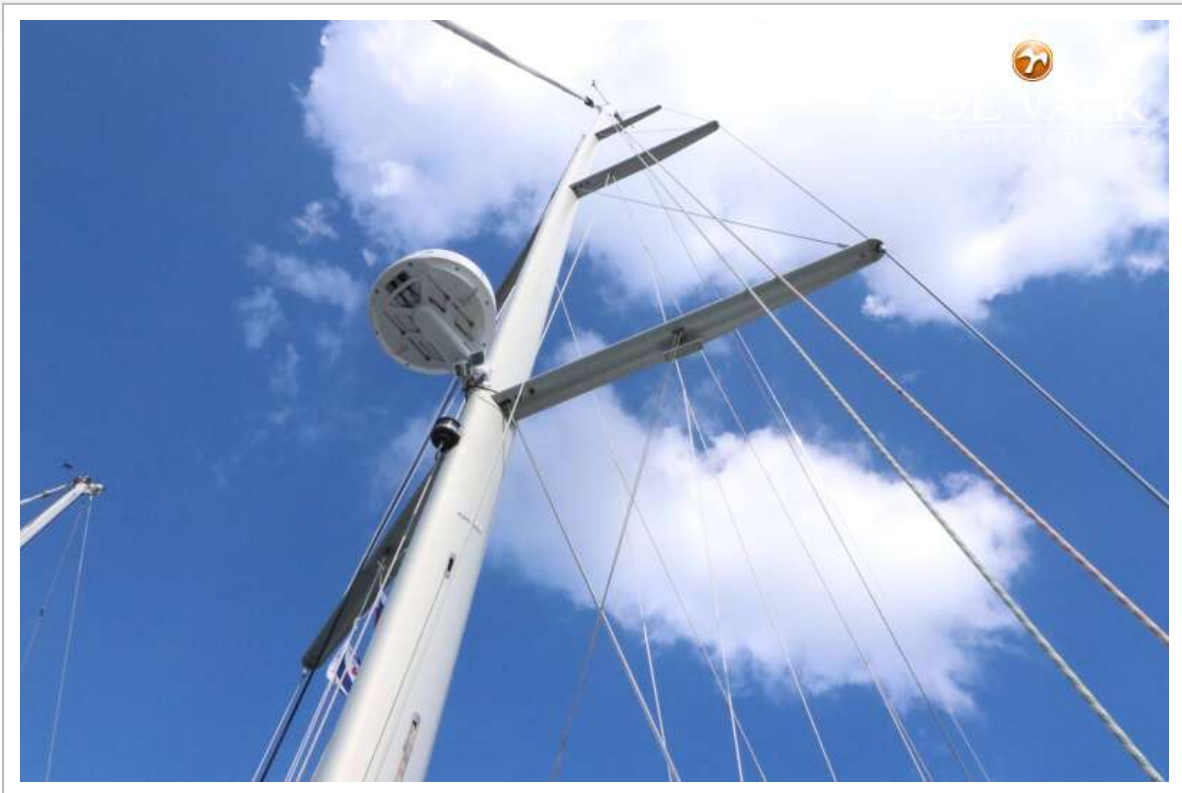
VAN DE STADT 44 SATELITE LIFT KEEL



VAN DE STADT 44 SATELITE LIFT KEEL



VAN DE STADT 44 SATELITE LIFT KEEL



VAN DE STADT 44 SATELITE LIFT KEEL



VAN DE STADT 44 SATELITE LIFT KEEL



VAN DE STADT 44 SATELITE LIFT KEEL



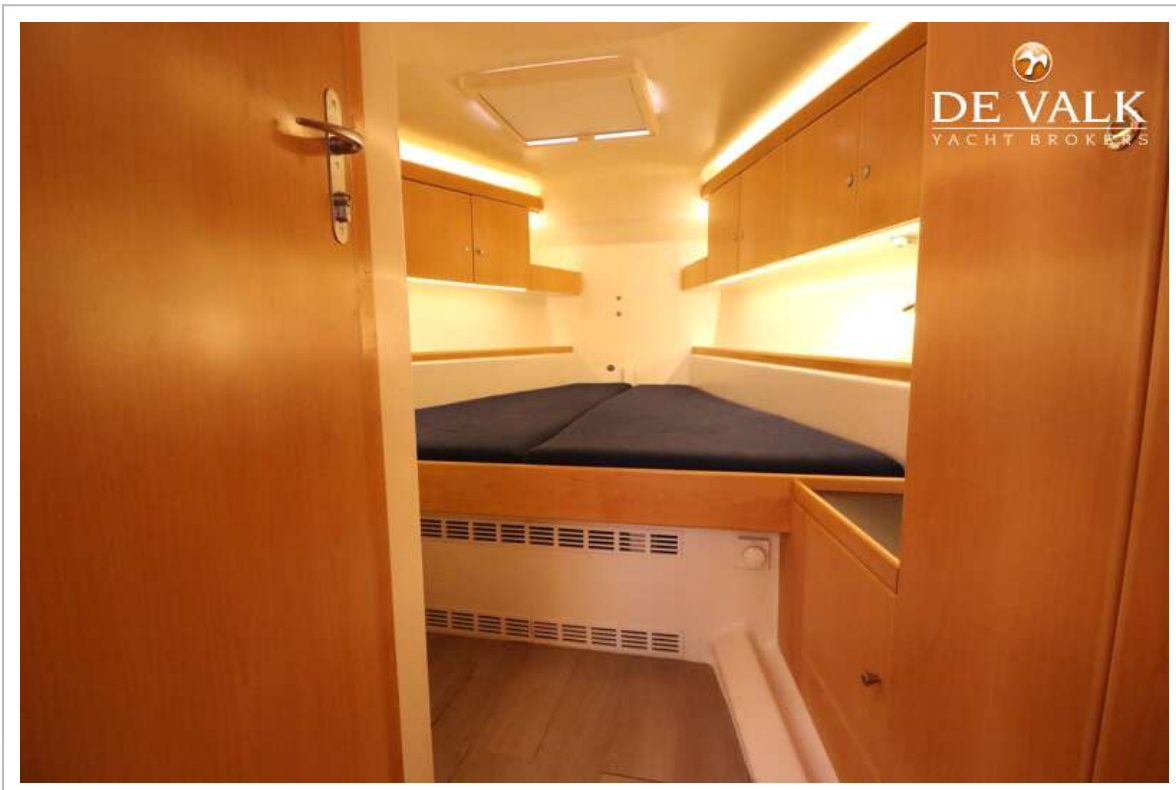
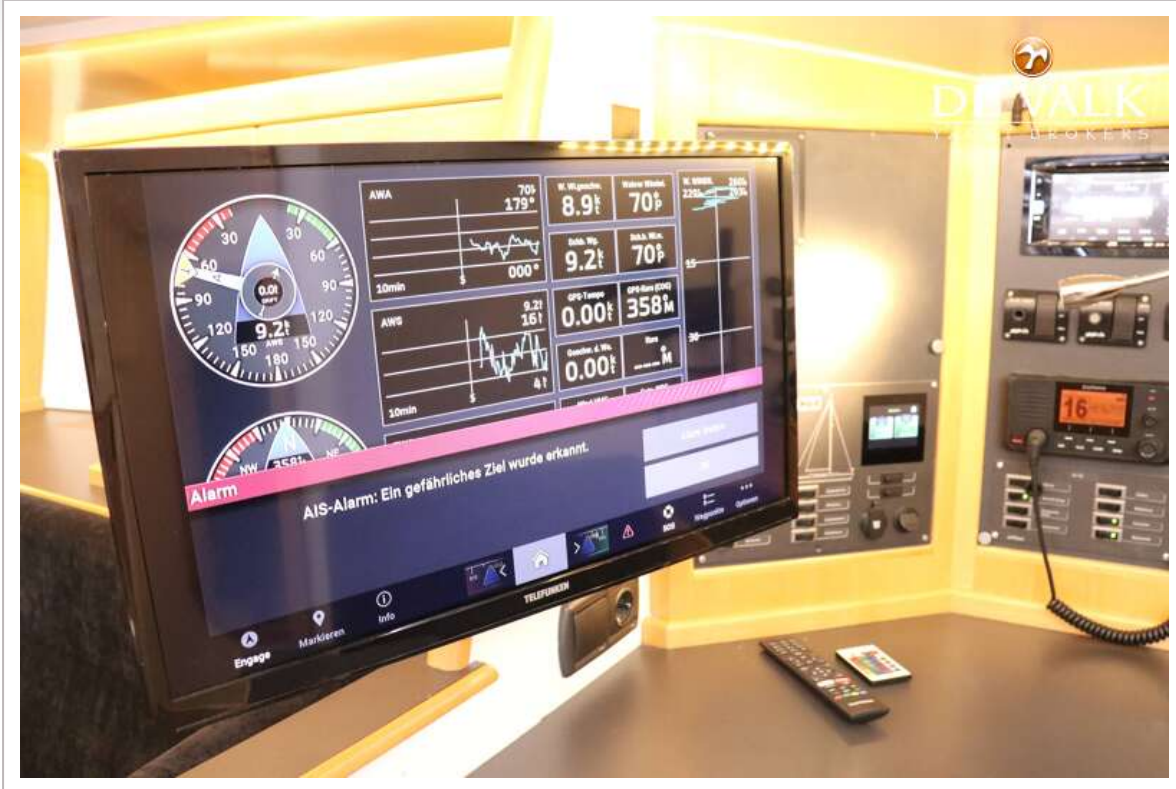
VAN DE STADT 44 SATELITE LIFT KEEL



VAN DE STADT 44 SATELITE LIFT KEEL



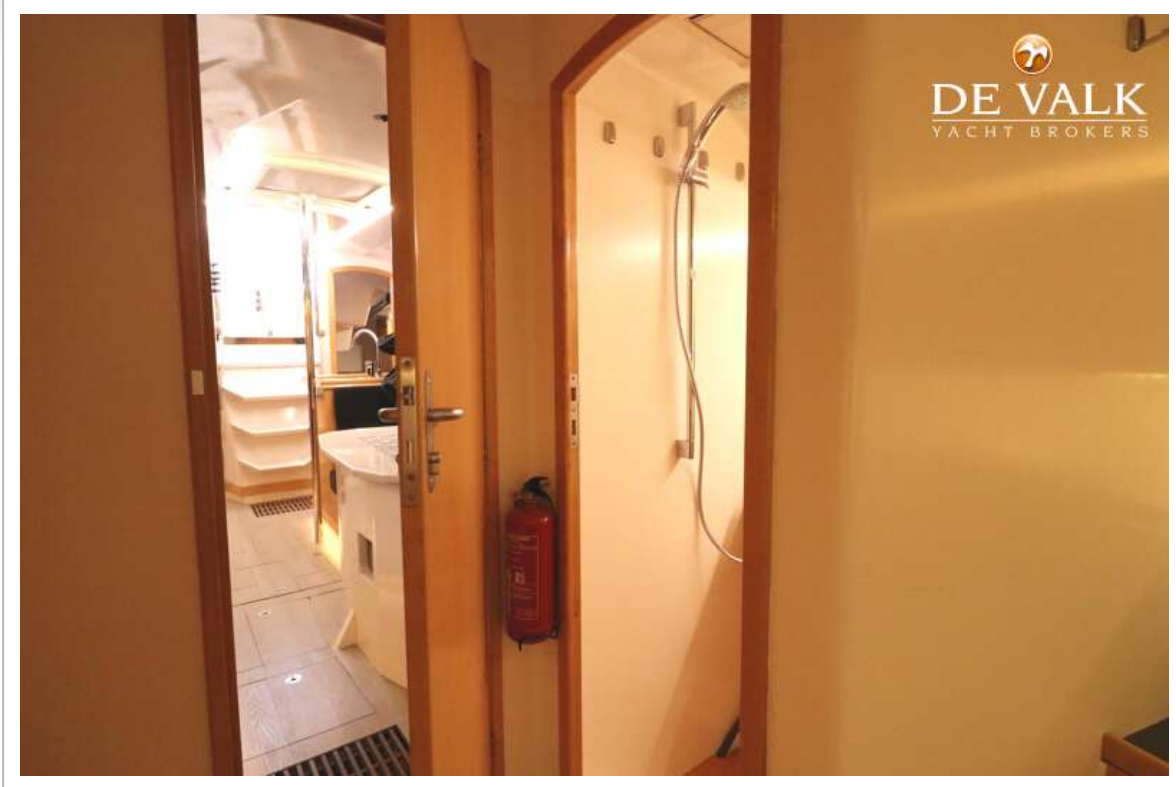
VAN DE STADT 44 SATELITE LIFT KEEL



VAN DE STADT 44 SATELITE LIFT KEEL



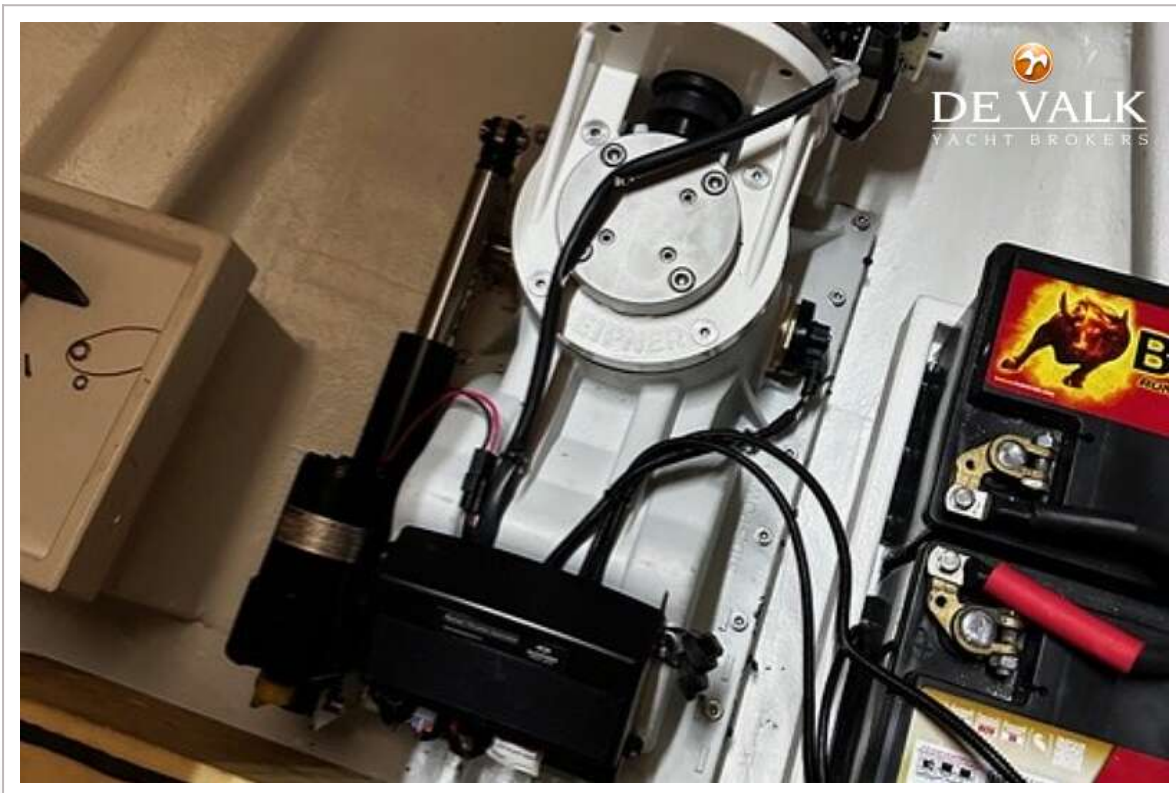
VAN DE STADT 44 SATELITE LIFT KEEL



VAN DE STADT 44 SATELITE LIFT KEEL



VAN DE STADT 44 SATELITE LIFT KEEL



VAN DE STADT 44 SATELITE LIFT KEEL

