



DE VALK  
YACHT BROKERS



## BENETEAU OCEANIS 34



DE VALK  
YACHT BROKERS

# BENETEAU OCEANIS 34

## BROKER'S COMMENTS

This Beneteau Oceanis 34 from the second owner with two cabins is a versatile and well-designed cruising yacht, perfect for couples or small families seeking comfort and performance on the water. The spacious cockpit with a user-friendly layout, is ideal for both relaxing at anchor and handling under sail. Below deck, a cozy saloon, and two cabins, offering plenty of storage and living space for extended trips. Known for its balanced sailing performance and solid construction, the Oceanis 34 is a fantastic choice for those looking to explore coastal waters or embark on longer adventures.

*Oliver Stehula*

## SPECIFICATIONS

<b>Dimensions</b>	9.99 x 3.65 x 1.87 (m)	<b>Builder</b>	Beneteau
<b>Built</b>	2009	<b>Cabins</b>	2
<b>Material</b>	GRP	<b>Berths</b>	6
<b>Engine(s)</b>	1 x YANMAR 3YM20 diesel	<b>Hp/Kw</b>	21.00 (hp), 15.46 (kw)
<b>Asking price</b>	€ 77.000 (VAT Paid)	<b>Lying</b>	at sales office

## CONTACT

<b>Sales office</b>	De Valk Palma	<b>Telephone</b>	+34 971 402 911
<b>Address</b>	Port. Cala Nova, Avda. Joan Miro, 327 07015 Palma de Mallorca Spain	<b>E-mail</b>	palma@devalk.nl

## DISCLAIMER

These particulars are given in good faith as supplied but cannot be guaranteed.



# BENETEAU OCEANIS 34

## GENERAL

Model	BENETEAU OCEANIS 34
Type	sailing yacht
LOA (m)	9,99
Beam (m)	3,65
Draft (m)	1,87
Headroom (m)	1,90
Year built	2009
Builder	Beneteau
Country	France
Designer	Finot-Conq & Associés
Displacement (t)	5,4
CE norm	A
Hull material	GRP
Keel type	bulb keel
Antifouling (year)	New in 02/2024
Fuel tank (litre)	1x 124 l
Freshwater tank (litre)	1x 130l & 1x 160 l
Blackwater tank (litre)	1x 80 l
Wheel steering	chain steering
Emergency tiller	yes

## ACCOMMODATION

Cabins	2
Berths	6
Interior	Alpi Blond Oak joinery
Headroom saloon (m)	1,85
Chart table	yes
Dinette to convert into berth	yes
Galley	yes
Sink	2 Rectangular stainless steel sinks



# BENETEAU OCEANIS 34

<b>Cooker</b>	calor gas ENO two burner
<b>Oven</b>	ENO
<b>Fridge</b>	Vitrofrigo C130L DX
<b>Hot water system</b>	220V + engine Quick B3, 25l
<b>Water pressure system</b>	electrical Aqua Jet
<b>Manual and/or foot pump</b>	Seawater
<b>Owners cabin</b>	v-bed
<b>Bed length (m)</b>	yes
<b>Bathroom</b>	shared
<b>Toilet</b>	shared
<b>Toilet system</b>	Jabsco Manual
<b>Wash basin</b>	in the bathroom
<b>Shower</b>	shared
<b>Guest cabin 1</b>	double bed
<b>Wardrobe</b>	hanging/drawers/shelves

## MACHINERY

<b>No of engines</b>	1
<b>Make</b>	YANMAR
<b>Type</b>	3YM20
<b>HP</b>	21
<b>kW</b>	15.46
<b>Fuel</b>	diesel
<b>Year installed</b>	2009
<b>Maximum speed (kn)</b>	8
<b>Cruising speed (kn)</b>	6
<b>Engine hours</b>	691
<b>Engine cooling system</b>	freshwater heat exchanger
<b>Drive</b>	shaft
<b>Engine controls</b>	bowden cable
<b>Gearbox</b>	mechanical Yanmar KM2P-1



<b>Propeller type</b>	yes
<b>Electric bilge pump</b>	yes
<b>Start battery</b>	1x 70Ah
<b>Service battery</b>	2x 70Ah
<b>Wind generator</b>	yes
<b>Shorepower</b>	with cable

## NAVIGATION

<b>Compass</b>	Plastimo
<b>Depth sounder/log</b>	Raymarine ST60
<b>Windset</b>	Raymarine ST60
<b>VHF</b>	GME GX600D
<b>Rudder angle indicator</b>	yes
<b>Navigation lights</b>	yes

## EQUIPMENT

<b>Sprayhood</b>	New in 2021
<b>Bimini</b>	New in 2021
<b>Cockpit cushions</b>	yes
<b>Cockpit table</b>	yes
<b>Bathing platform</b>	yes
<b>Boarding ladder</b>	yes
<b>Gangway</b>	yes
<b>Deck shower</b>	yes
<b>Anchor</b>	Delta 13kg
<b>Anchor chain</b>	10mm x50m
<b>Windlass</b>	electrical Quick
<b>Dinghy</b>	inflatable Zodiac Cadet 2,30, new in 2023
<b>Outboard</b>	Honda BF 2.3, new in 2021
<b>Outboard support</b>	yes
<b>Sea railing</b>	wire



Life raft (pers)	container 4 pax. need inspection
Lifejackets	Need inspection
Radar reflector	yes
Radio-cd player	LG LAC 5800R
Cockpit speakers	yes

## RIGGING

Rigging	Standard mast 9/10 electro-polished aluminium
Standing rigging	wire
Brand mast	Seldén
Material mast	aluminium
Spreaders	Two pairs
Mainsail	Half-battened with slider
Mainsail cover	New in 04/2023
Genoa	yes
Genoa furler	Pro Furl C350
Reefing System	quick-one-line-reefing
Boomvang	mechanical and tackle Selden
Primary sheet winch	Harken 40 two speed
Secondary sheet winch	Harken 40 two speed
Genoa sheetwinches	2x Harken 40 two speed

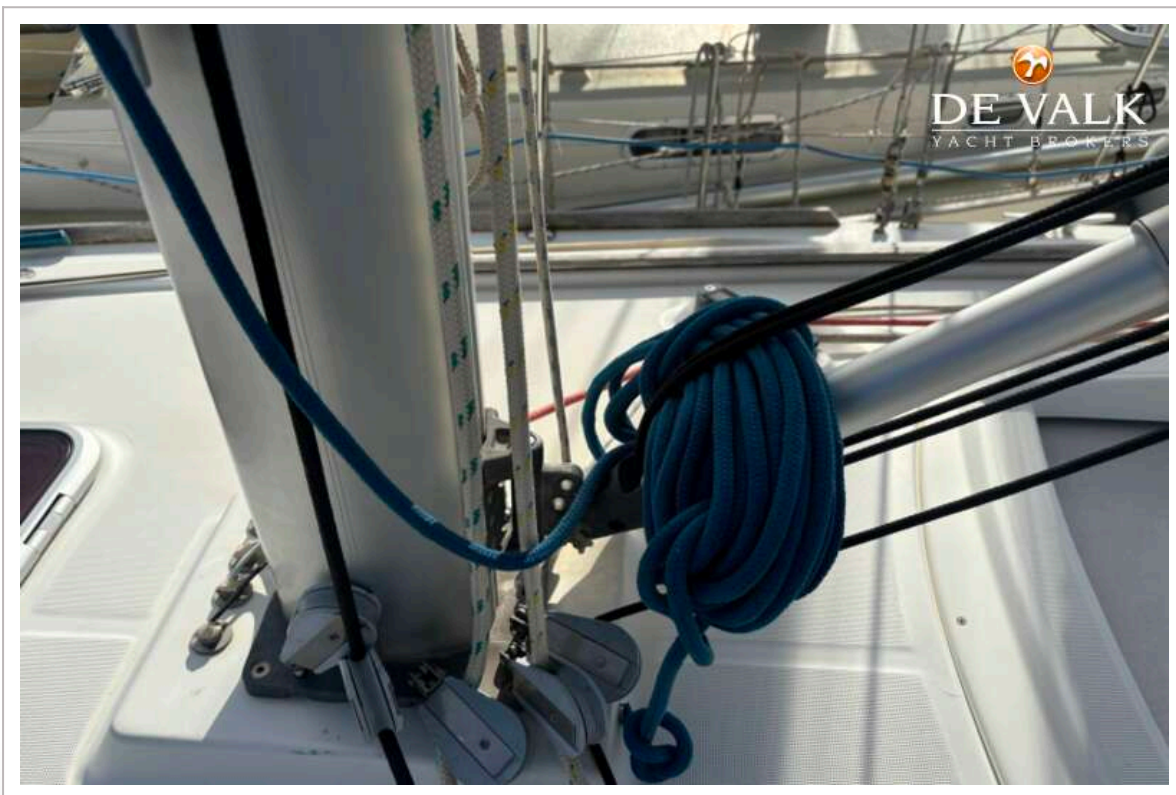




# BENETEAU OCEANIS 34



# BENETEAU OCEANIS 34





# BENETEAU OCEANIS 34



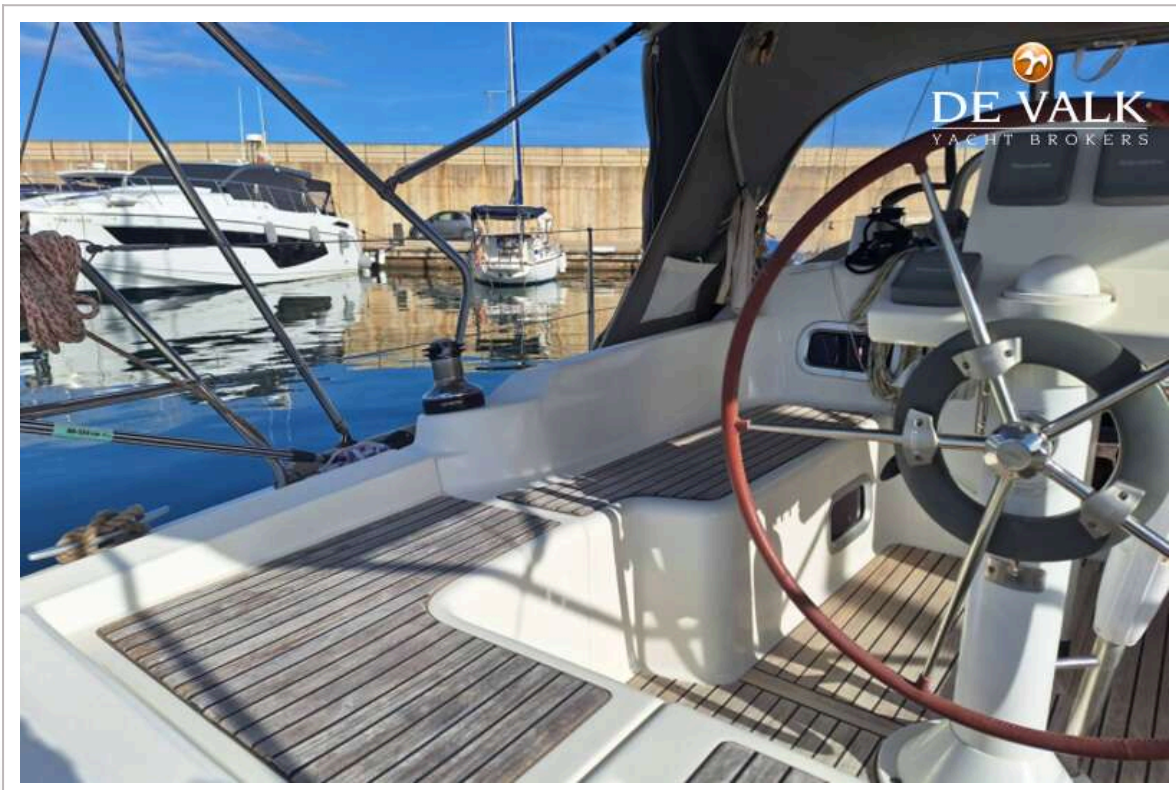


# BENETEAU OCEANIS 34



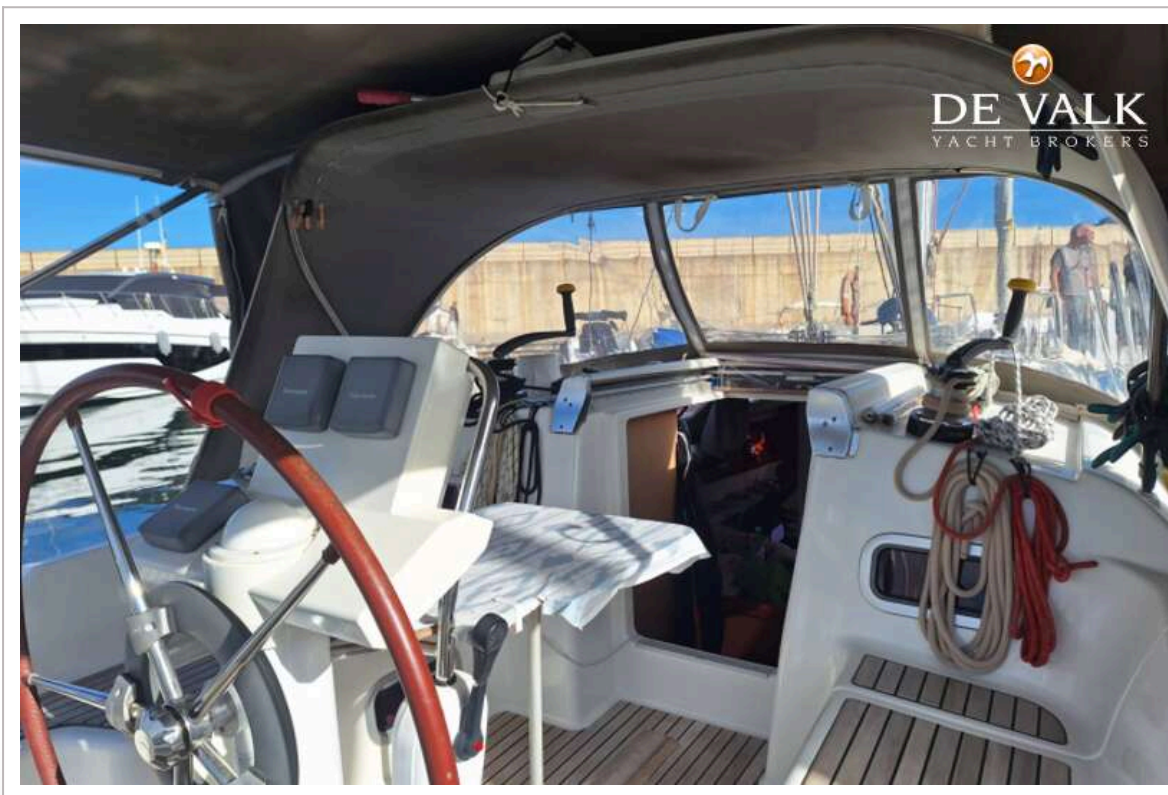
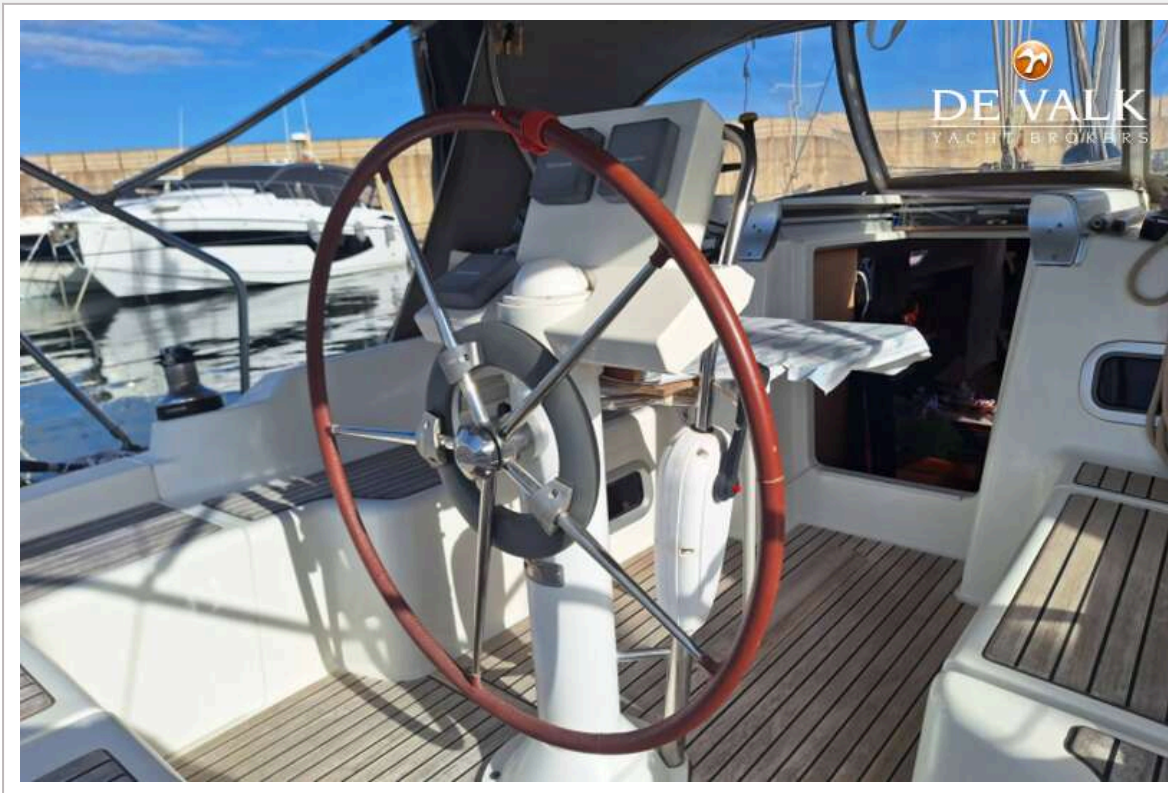


# BENETEAU OCEANIS 34

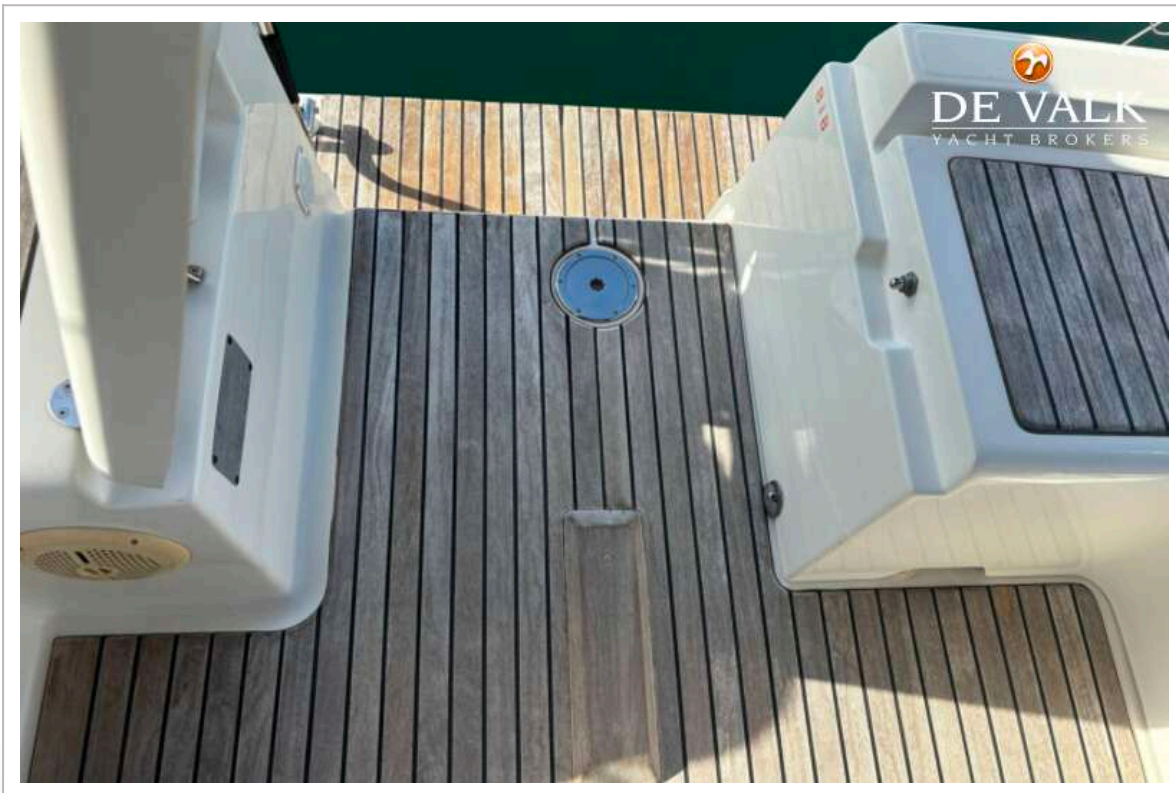




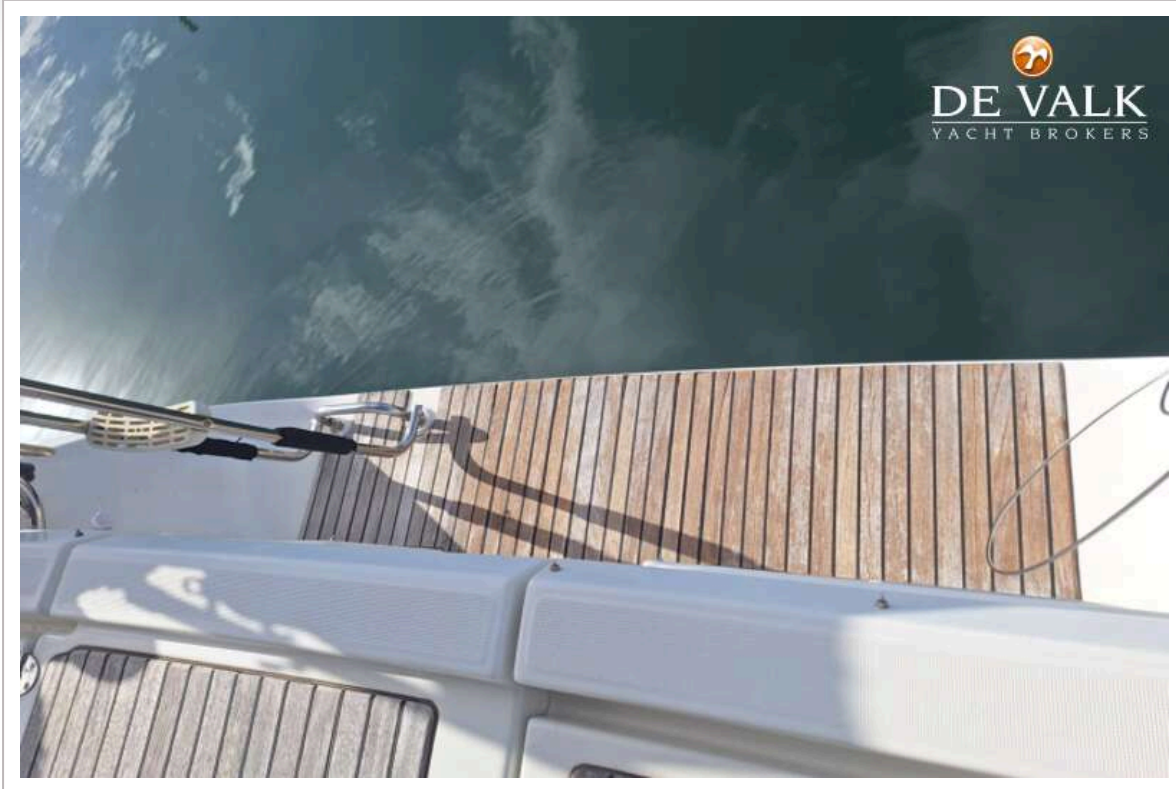
# BENETEAU OCEANIS 34



# BENETEAU OCEANIS 34





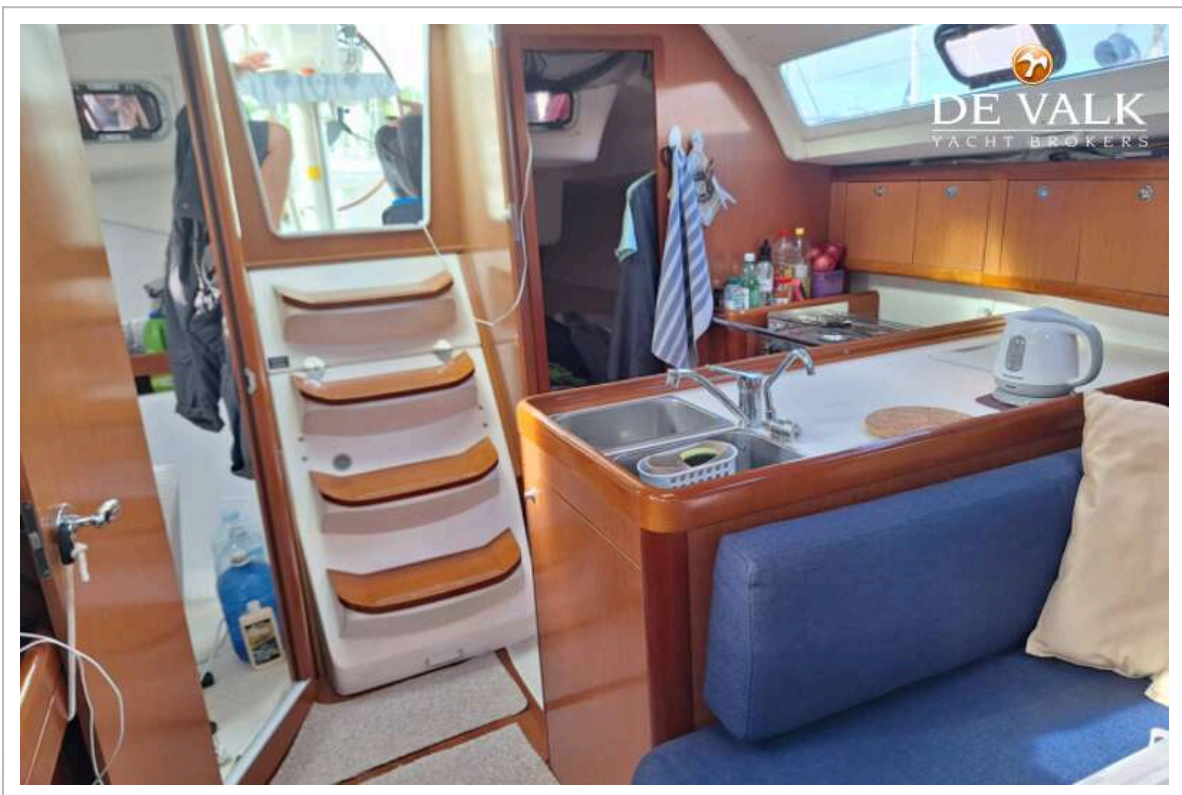


# BENETEAU OCEANIS 34

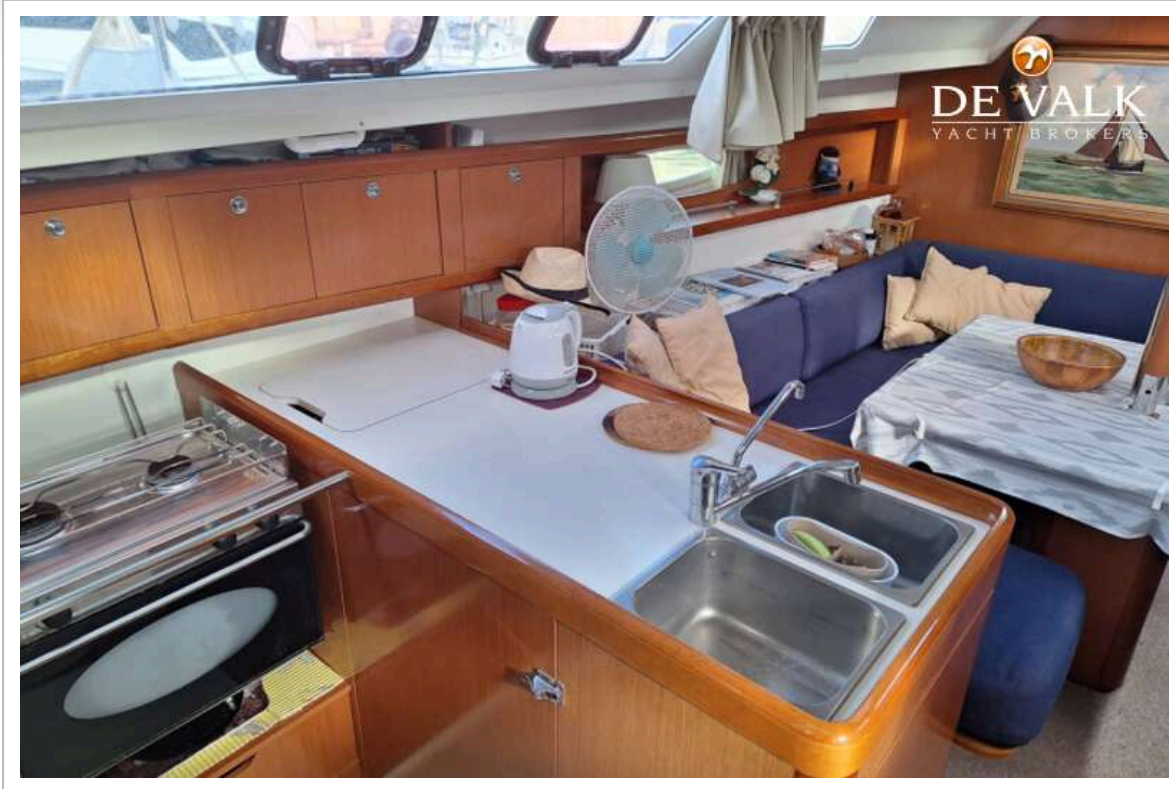




# BENETEAU OCEANIS 34

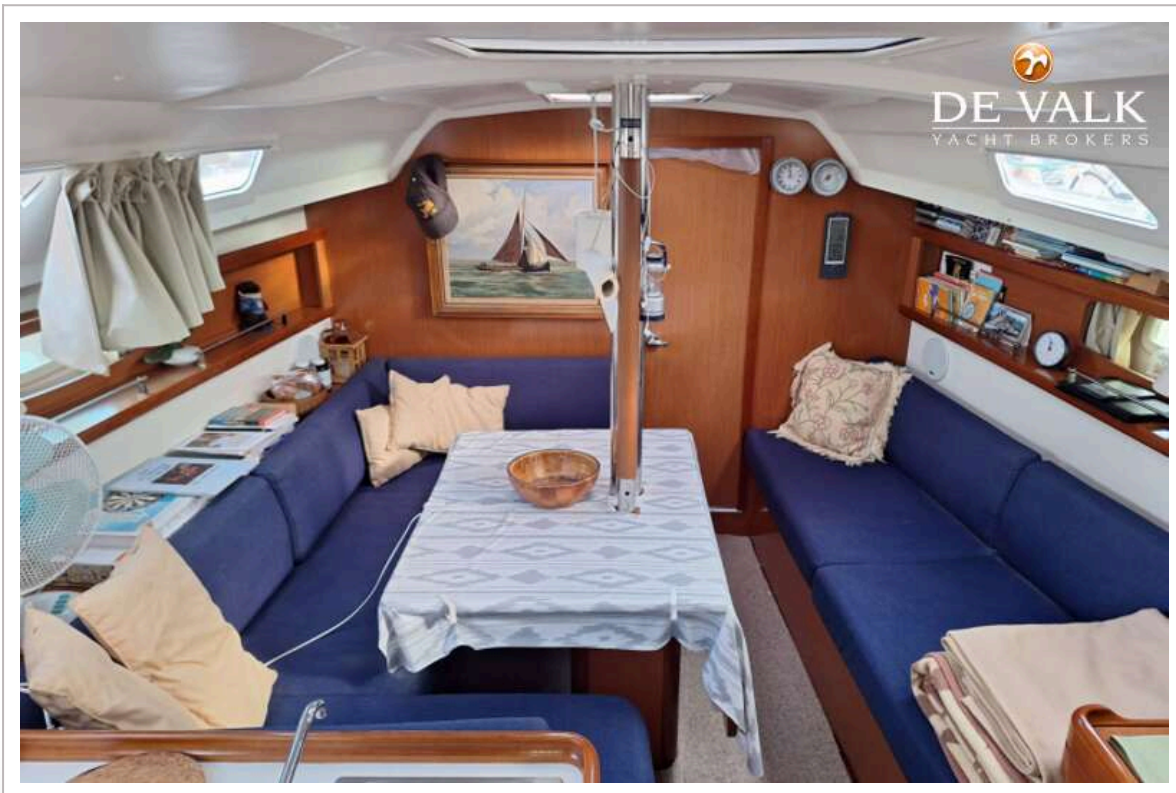


# BENETEAU OCEANIS 34





# BENETEAU OCEANIS 34





# BENETEAU OCEANIS 34



# BENETEAU OCEANIS 34

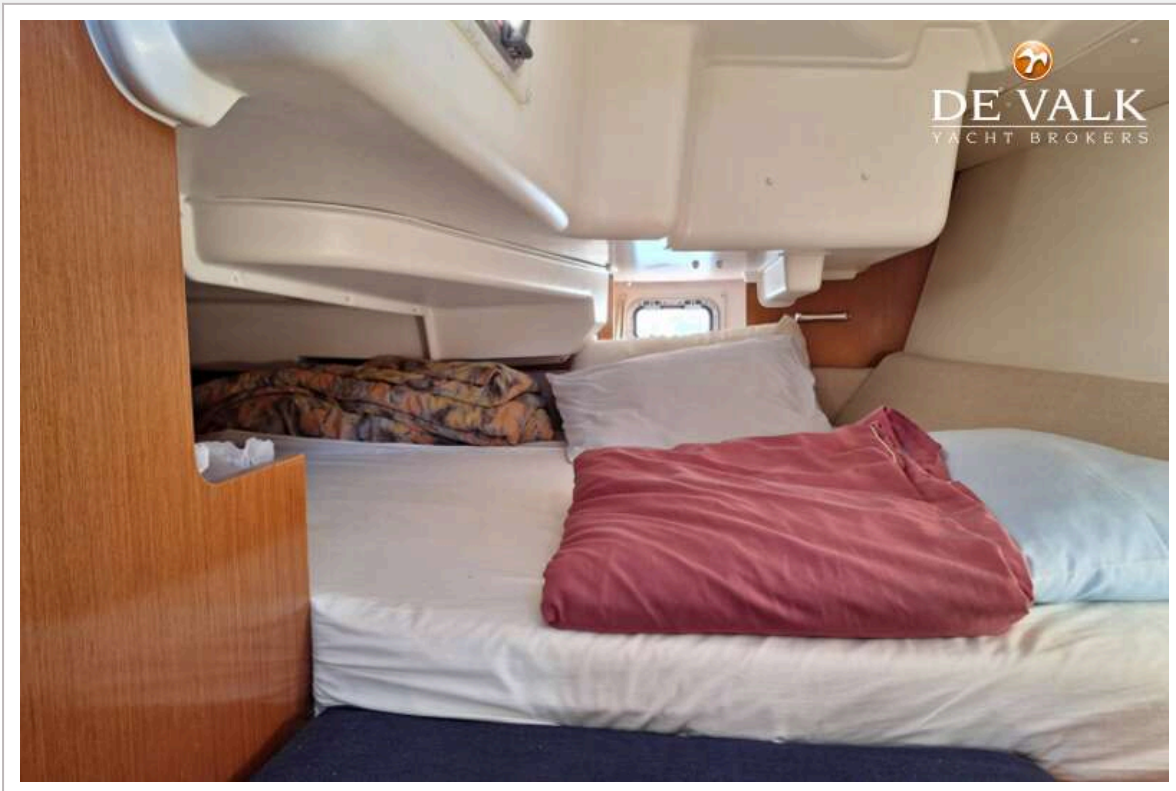




# BENETEAU OCEANIS 34



# BENETEAU OCEANIS 34



# BENETEAU OCEANIS 34





# BENETEAU OCEANIS 34

