



DE VALK
YACHT BROKERS



TORGEM 92



DE VALK
YACHT BROKERS

BROKER'S COMMENTS

Custom made 28 m steel hull yacht built by Torgem Shipyard in Istanbul Turkey. She accommodates up to 10 guests in 5 cabins plus 4 crew in separate crew quarters. The yacht was refitted totally in 2020 and has a modern interior design. Above all she is very economy in fuel consumption.

Sofia Iliia-Salvanou

SPECIFICATIONS

Dimensions	28.00 x 6.00 x 2.20 (m)	Builder	TORGEM SHIPBUILDING INDUSTRY & TRADE CO
Built	1992	Cabins	5
Material	Steel	Berths	10
Engine(s)	2 x MAN D2566 ME diesel	Hp/Kw	2 x 250.00 (hp), 184.00 (kw)
Asking price	€ 980.000 (VAT Not paid)	Lying	elsewhere / Not at sales office

CONTACT

Sales office	De Valk Corfu	Telephone	(+30) 266 111 8095
Address	New Port of Corfu, near Gouvia Marina 490 83 Corfu Greece	E-mail	corfu@devalk.nl

DISCLAIMER

These particulars are given in good faith as supplied but cannot be guaranteed.



GENERAL

Model	TORGEM 92
Type	motor yacht
LOA (m)	28,00
Beam (m)	6,00
Draft (m)	2,20
Headroom (m)	2,05
Year built	1992
Launched	1992. REFIT: 2020
Builder	TORGEM SHIPBUILDING INDUSTRY & TRADE CO
Country	Turkey
Hull material	steel
Hull colour	white
Deck material	steel
Deck finish	teak
Cockpit deck finish	teak
Antifouling (year)	2023
Deckhatch	yes
Portholes	yes
Flybridge	yes
Radar arch	yes
Fuel tank (litre)	5.000
Level indicator (fuel tank)	yes
Freshwater tank (litre)	5.000
Level indicator (freshwater)	yes
Blackwater tank (litre)	yes
Level indicator (blackwater)	yes
Blackwater tank extraction	yes
Greywater tank (litre)	yes
Level indicator (greywater)	yes
Wheel steering	yes



Inside helm position	yes
Emergency tiller	yes

ACCOMMODATION

Cabins	5
Berths	10
Crew cabin	1
Crew berths	4-5
Heating	yes
Air-conditioning	Full
Dishwasher	yes
Ice maker	X 2
Coffee maker	NESPRESSO
Crockery	yes
Owners cabin	double bed
Bed length (m)	160x200 cm
Wardrobe	yes
Bathroom	en suite
Toilet	en suite
Toilet system	electric
Wash basin	in the bathroom
Shower	en suite
Jacuzzi	yes
Bathroom (crew)	yes
Toilet (crew)	yes
Shower (crew)	yes
Washing machine	yes
Washing machine/dryer combi	yes

MACHINERY

No of engines	2
---------------	---



Make	MAN
Type	D2566 ME
HP	250
kW	184
Fuel	diesel
Year of overhaul	W6 in 2023
Maximum speed (kn)	12
Cruising speed (kn)	9
Consumption (l/hr)	100
Drive	shaft
Bowthruster	yes
Sternthruster	yes
Generator	21,9Kw ONAN
Generator 2	17 Kw ONAN
Service battery	yes
Bowthruster battery	yes
Sternthruster battery	yes
Watermaker	150 Lt/h

NAVIGATION

Autopilot	yes
Plotter/GPS	yes
Wifi antenna	yes

EQUIPMENT

Sun awning	yes
Cockpit chairs	yes
Windlass	yes
Dinghy	4,10 m
Outboard	Honda 50 Hp
Lifejackets	yes



TV

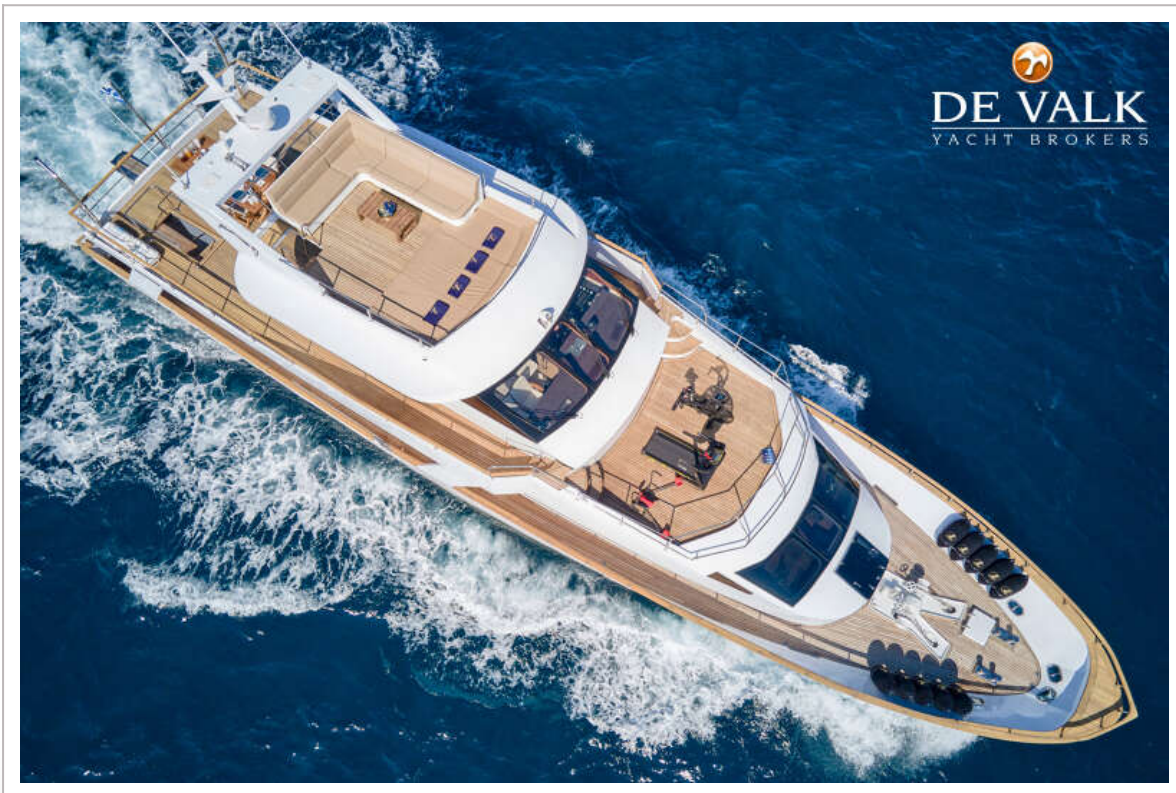
7 TV's

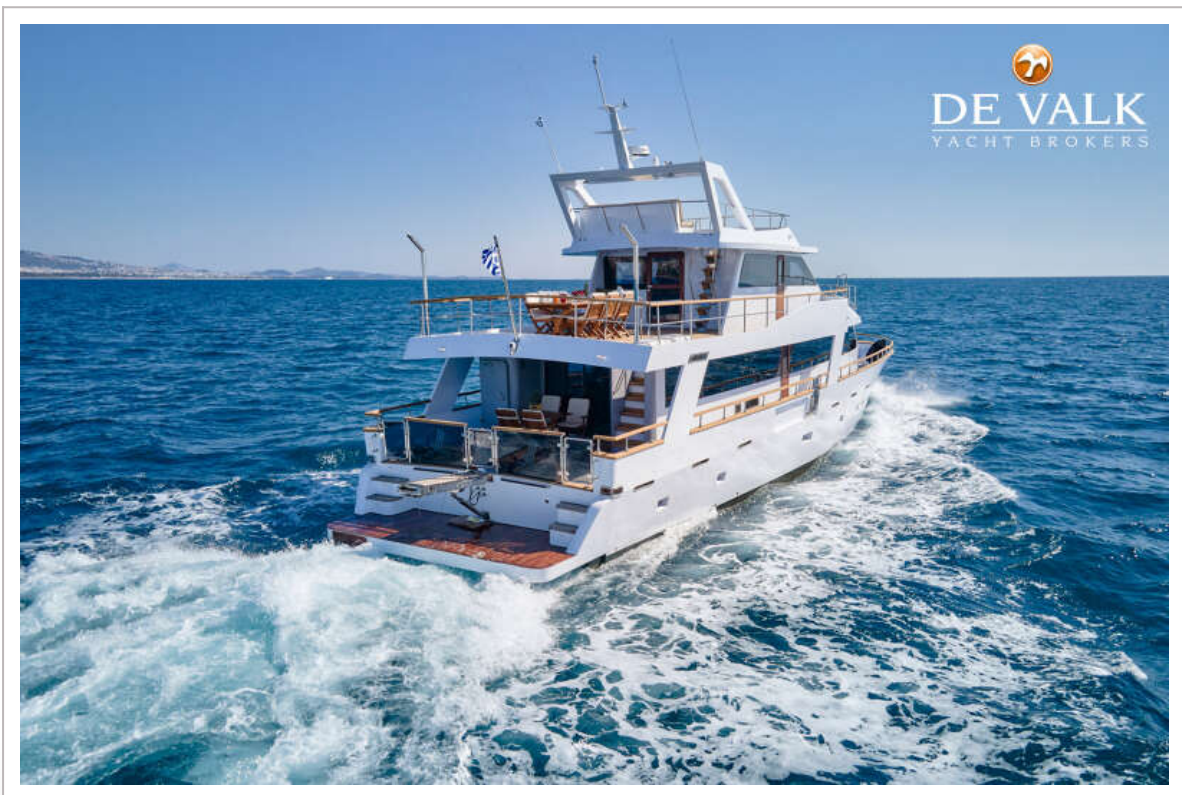
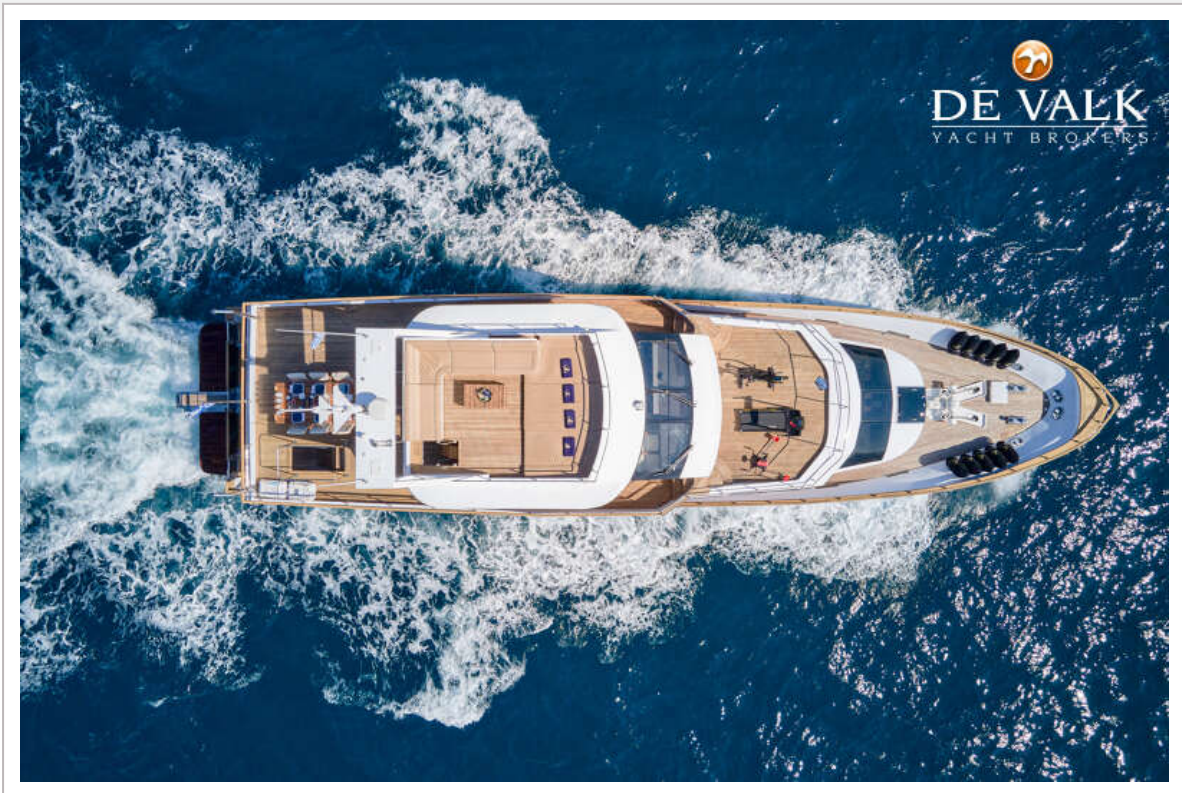
Extra info

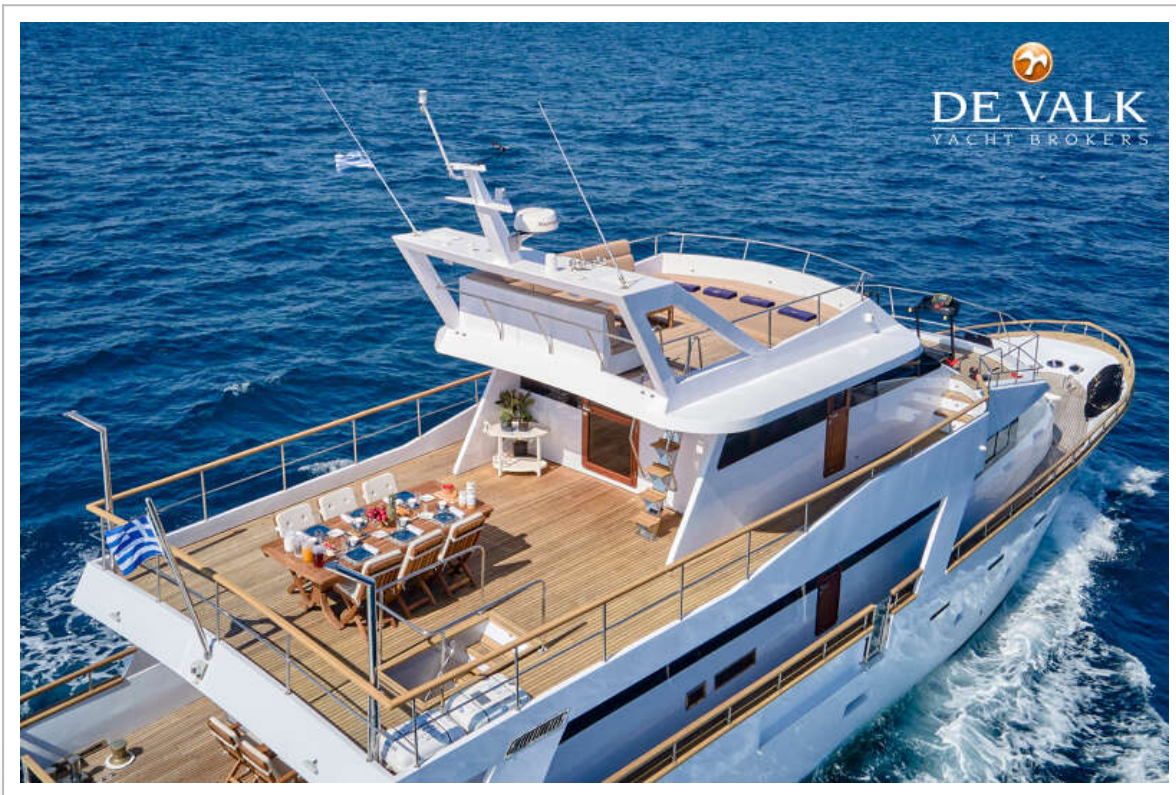
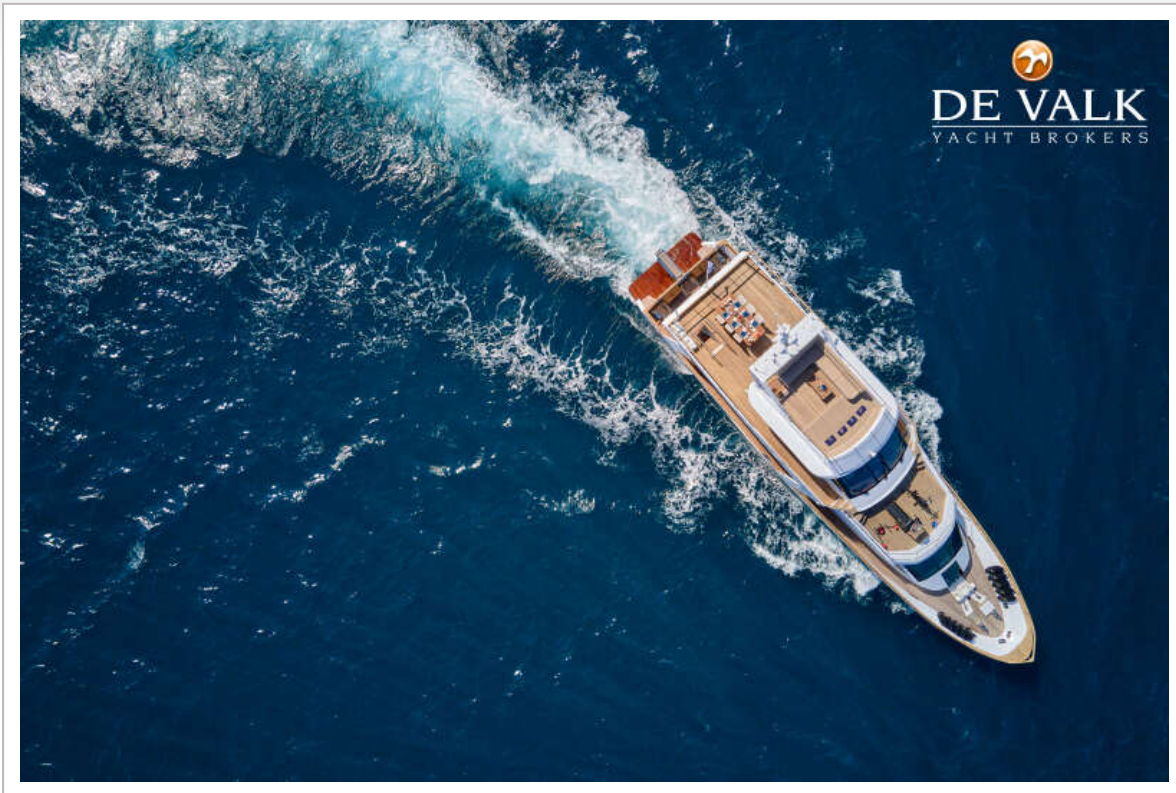
USB charging in all cabins



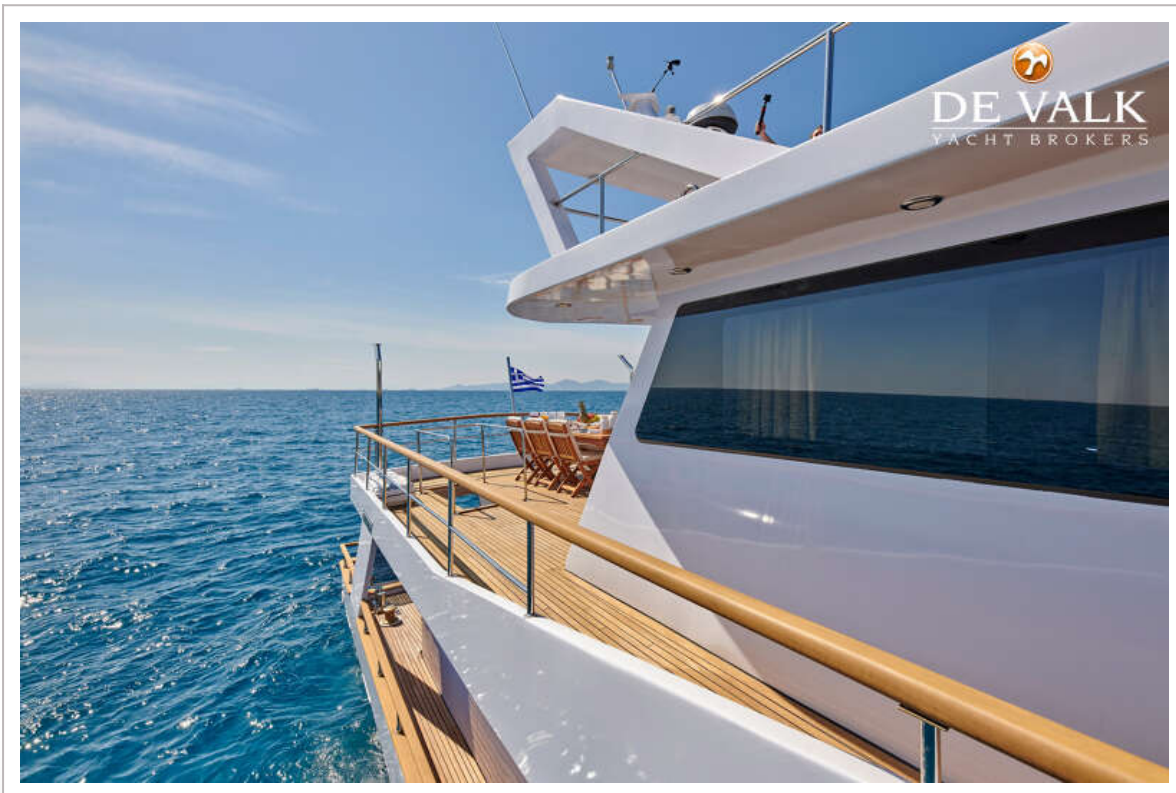
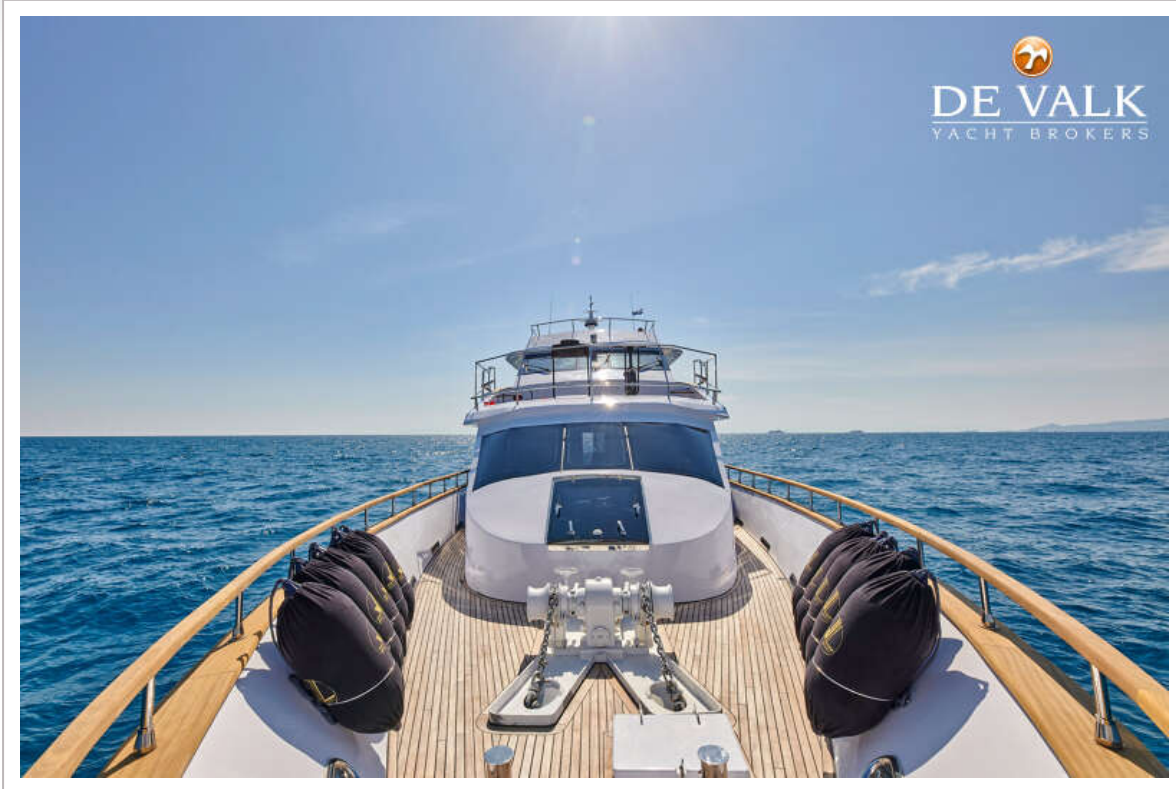
TORGEM 92

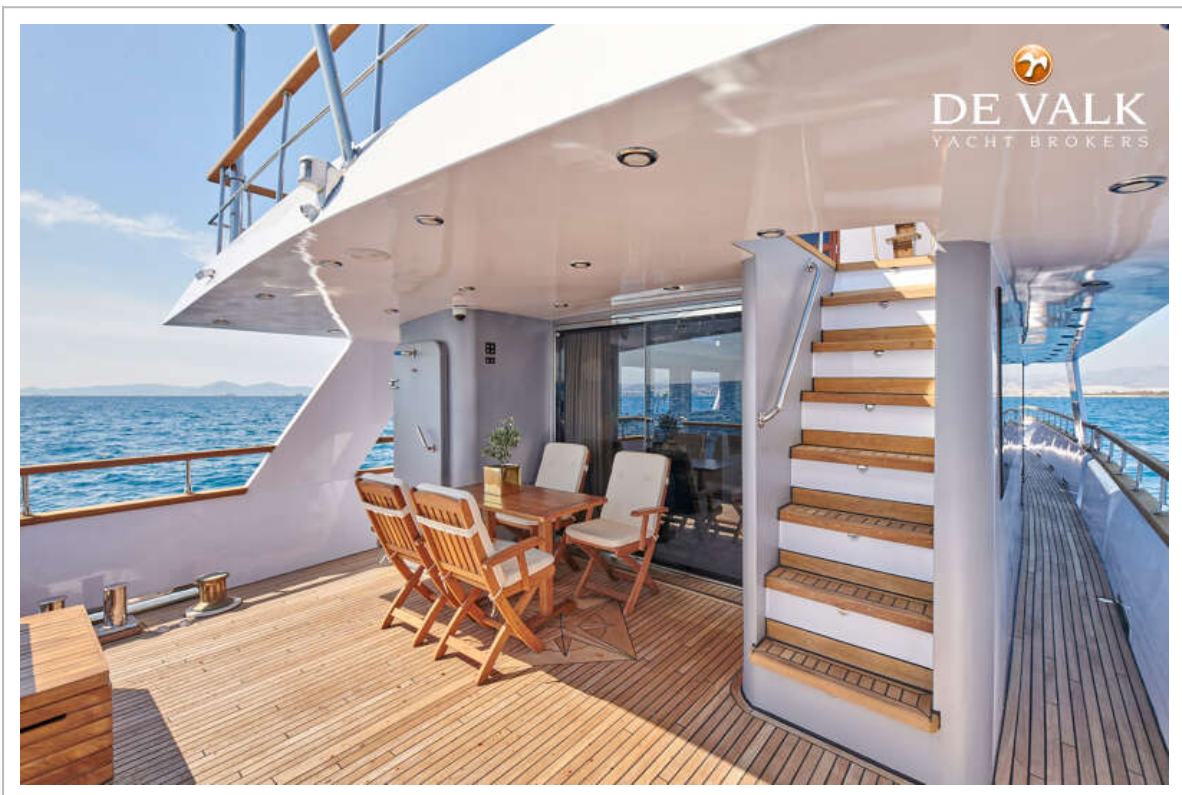
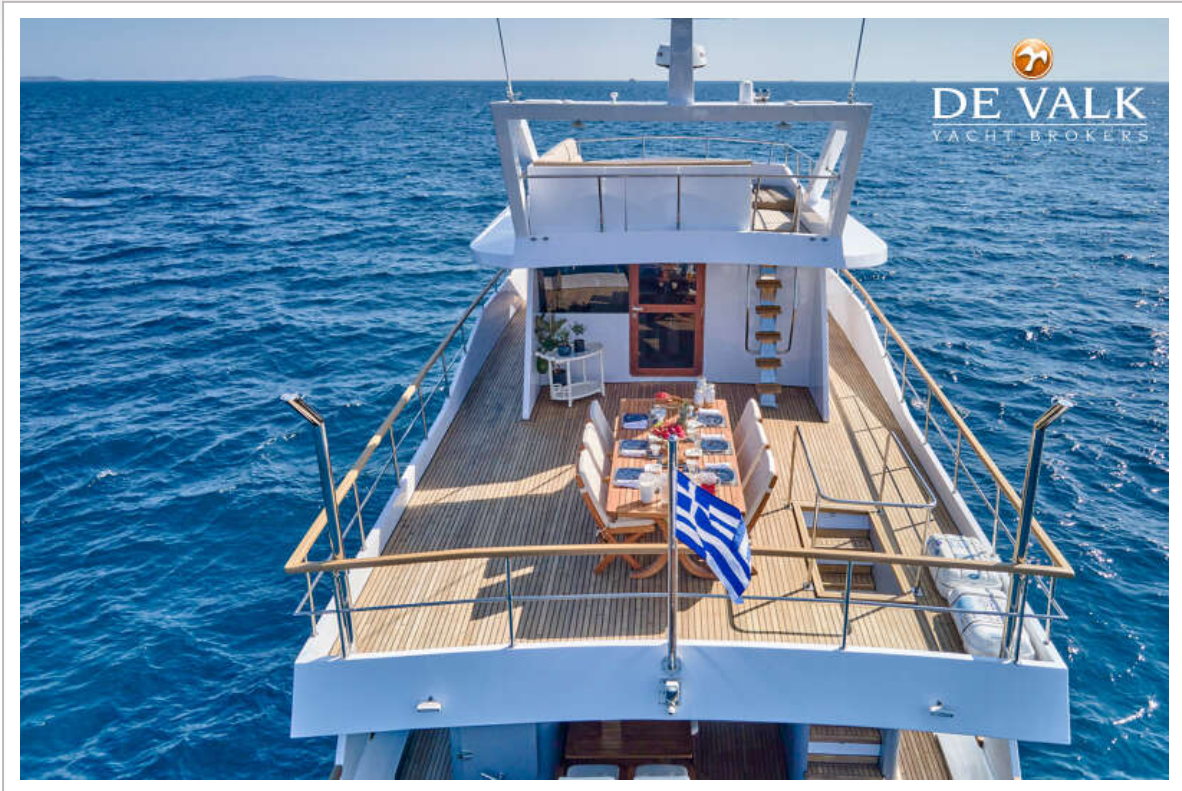


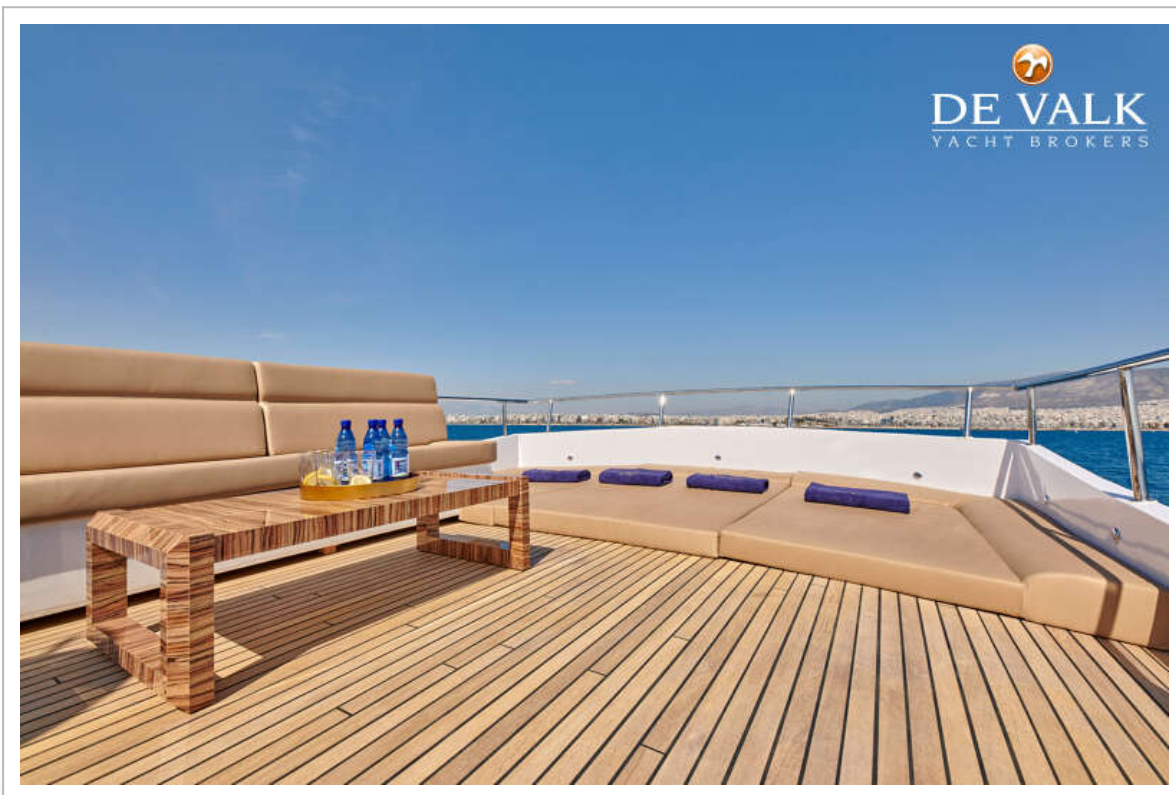
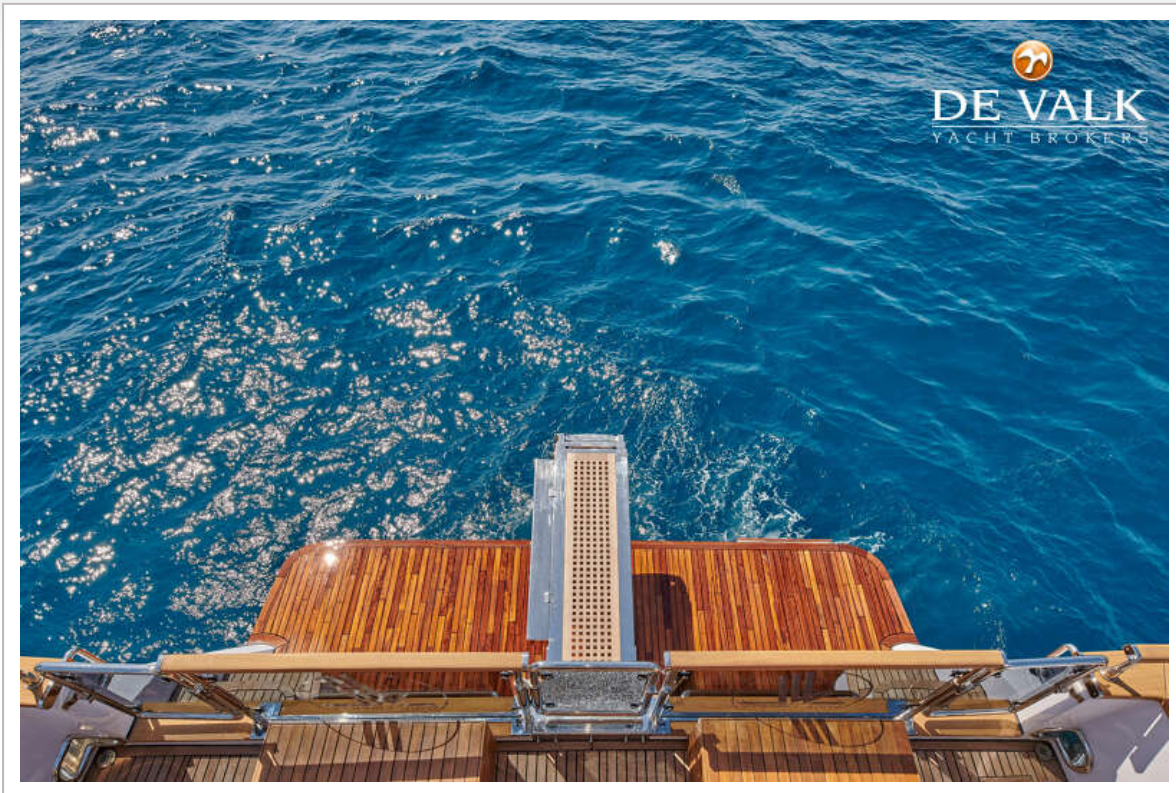


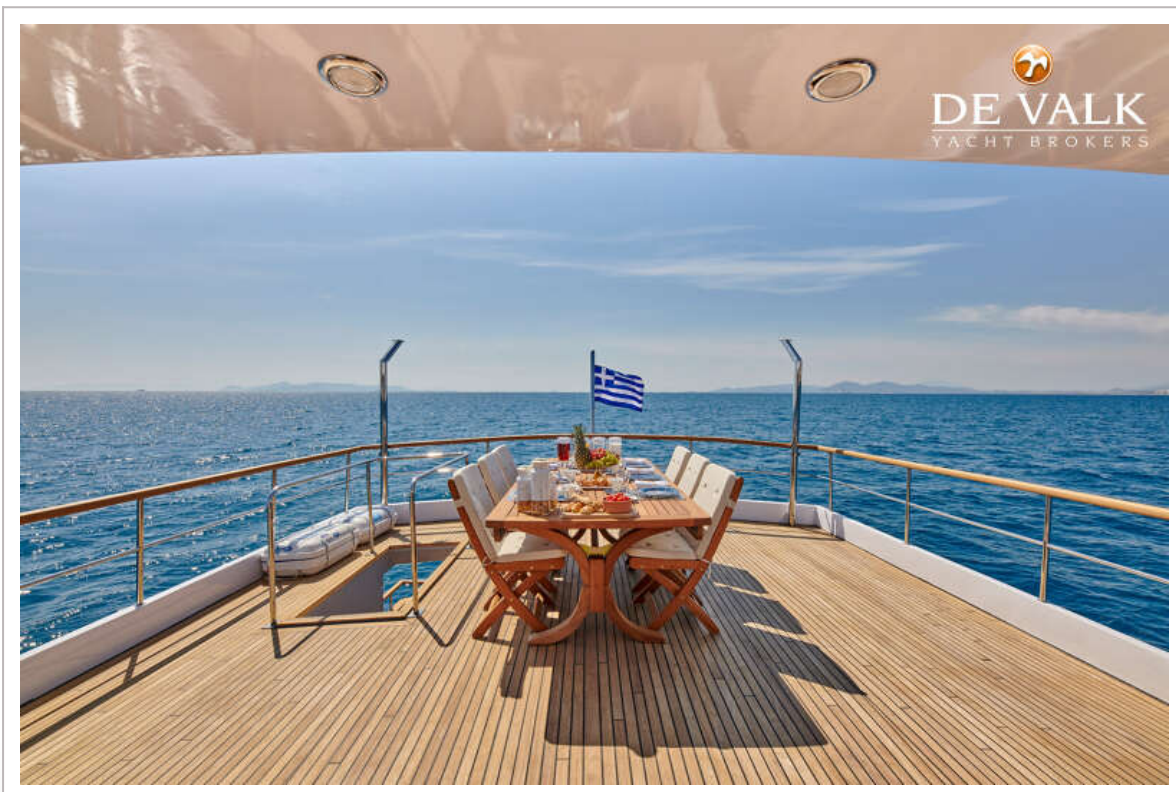


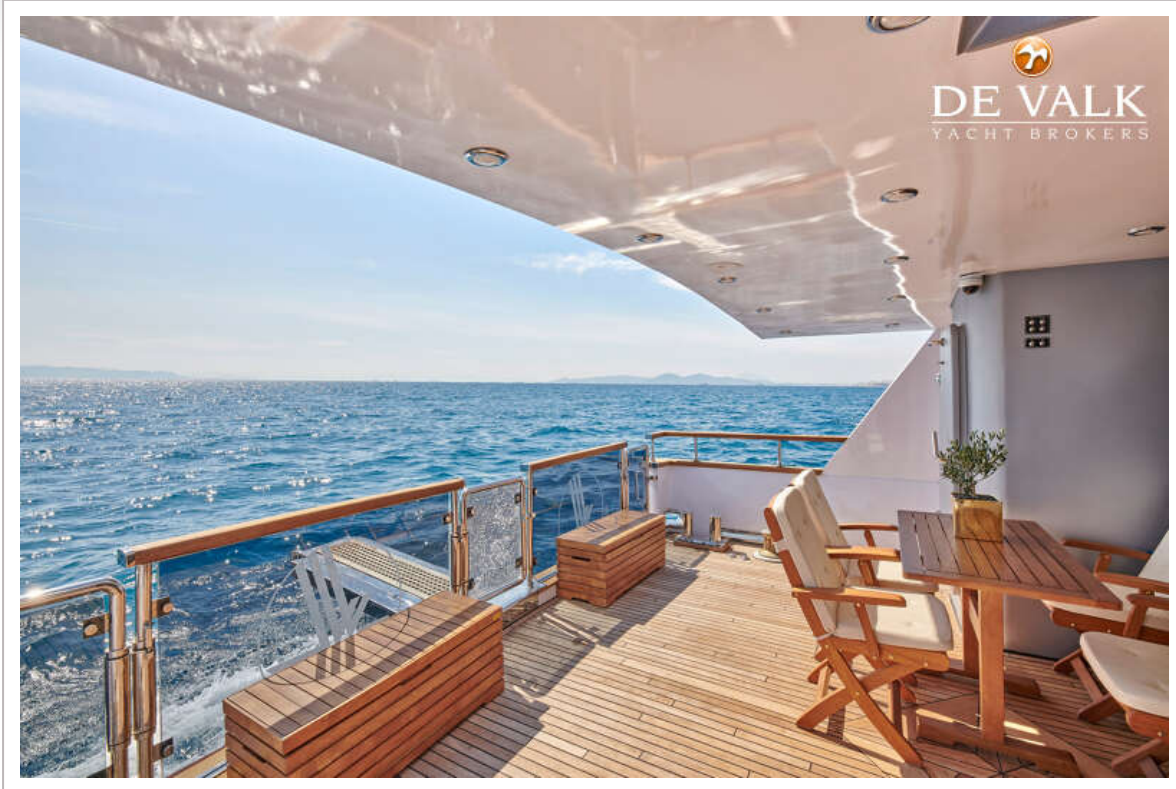
TORGEM 92

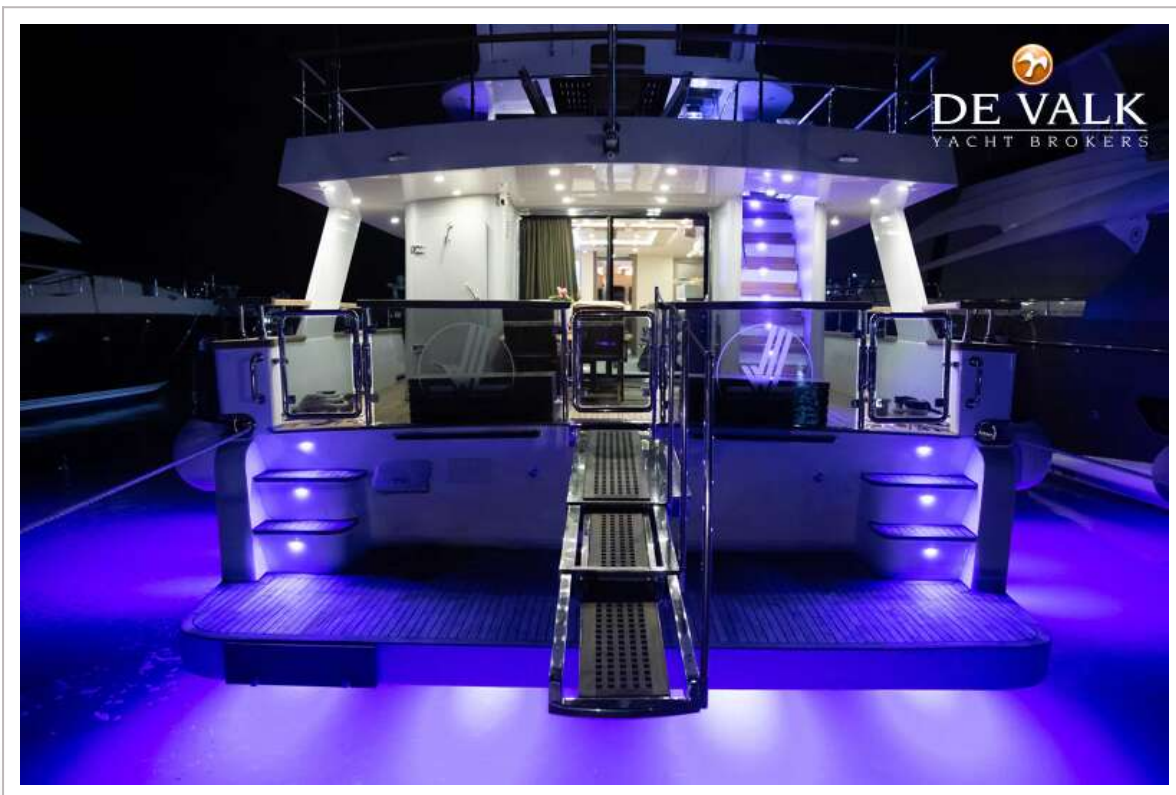
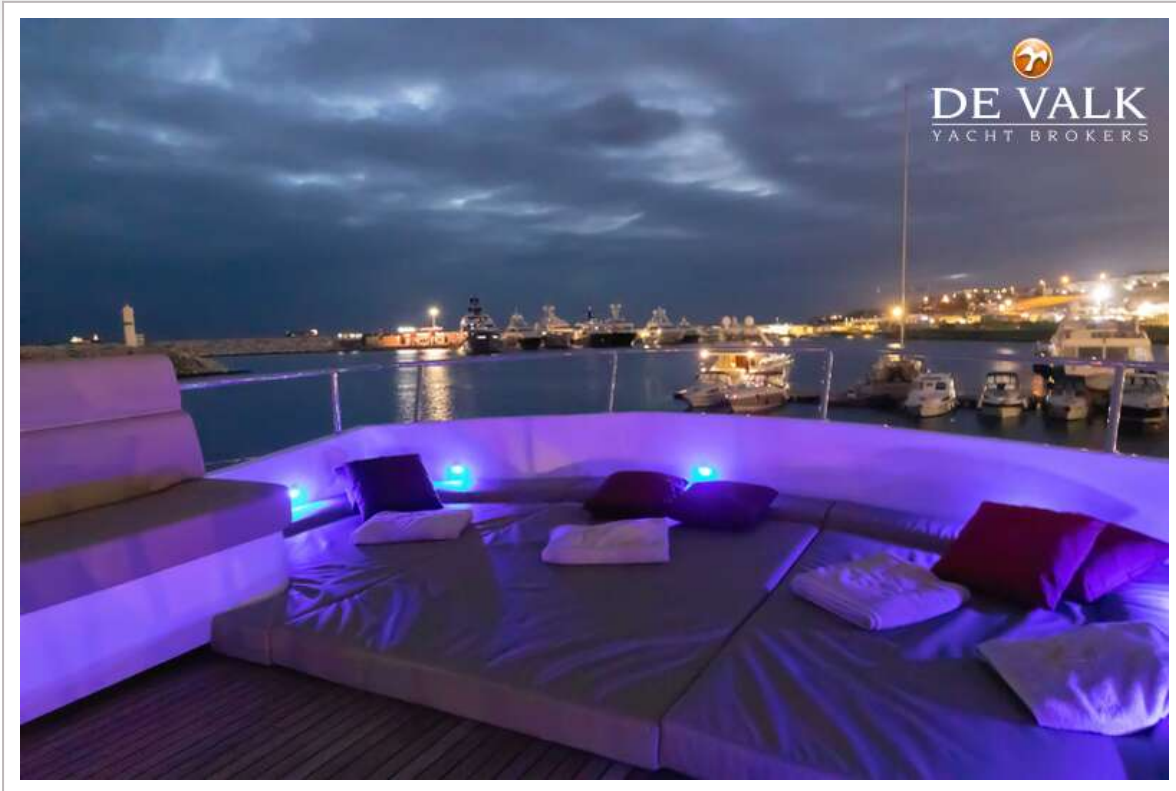


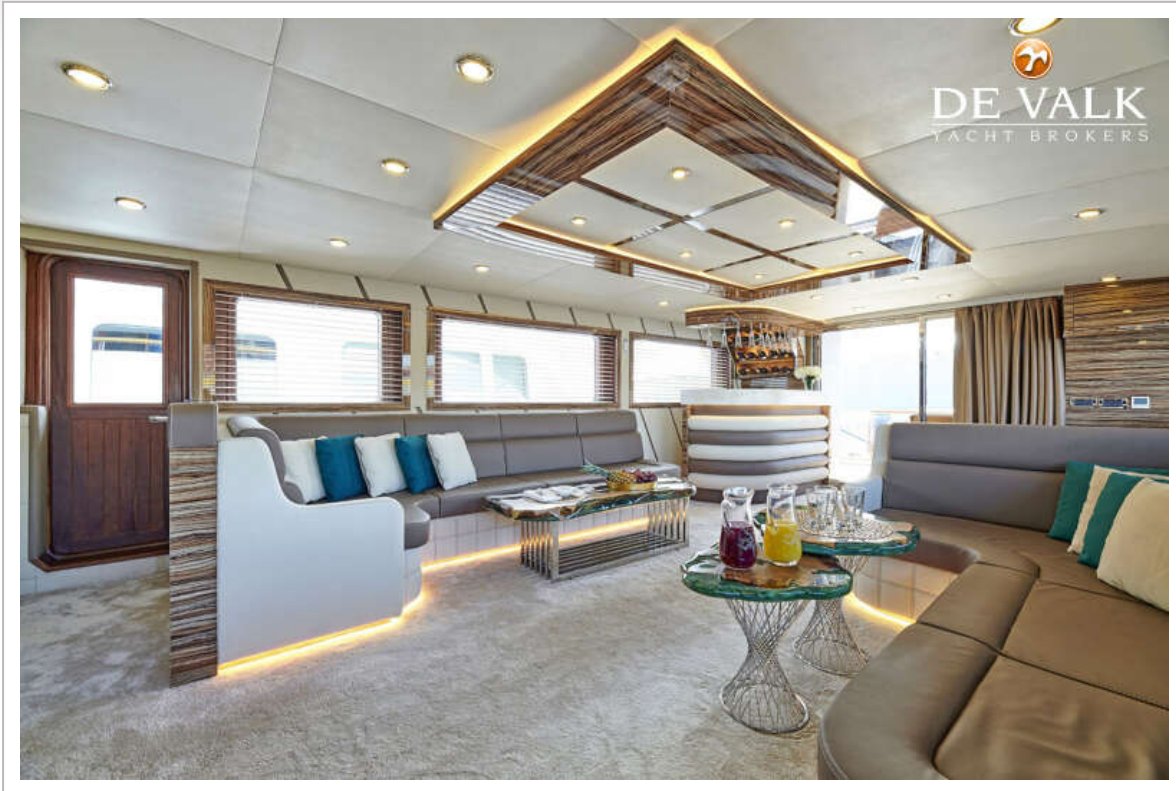


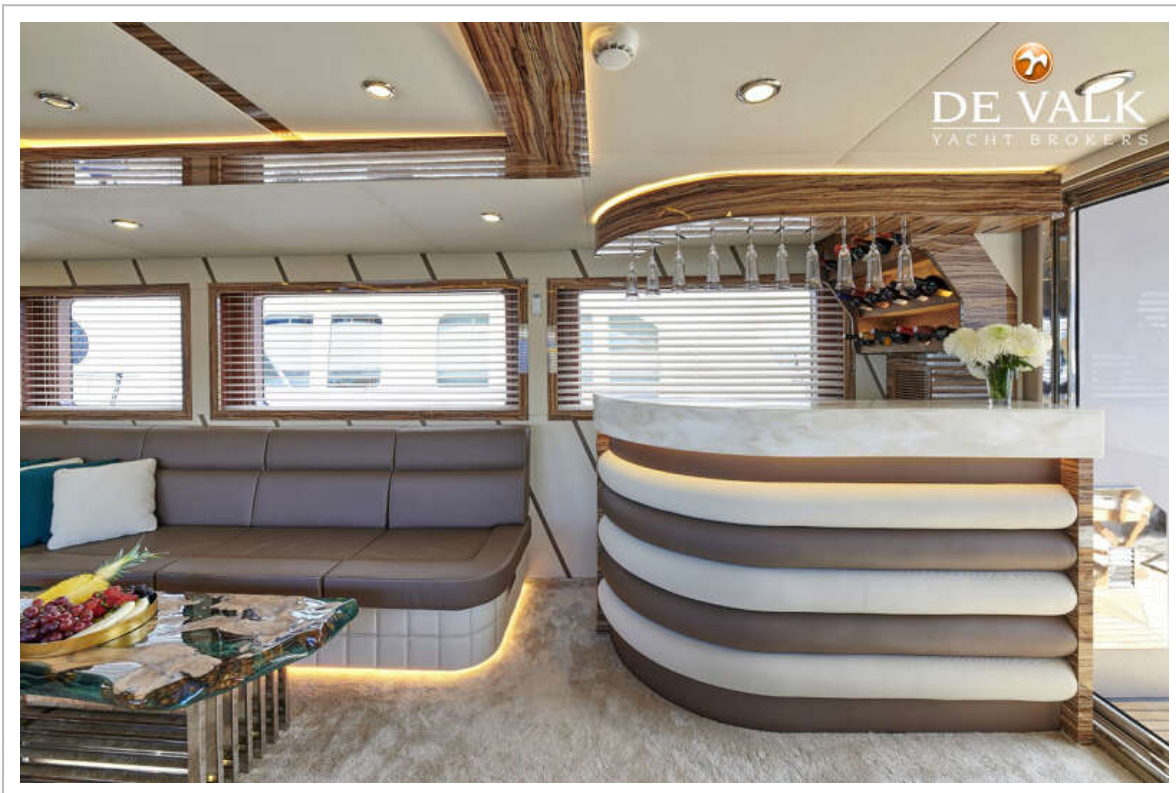


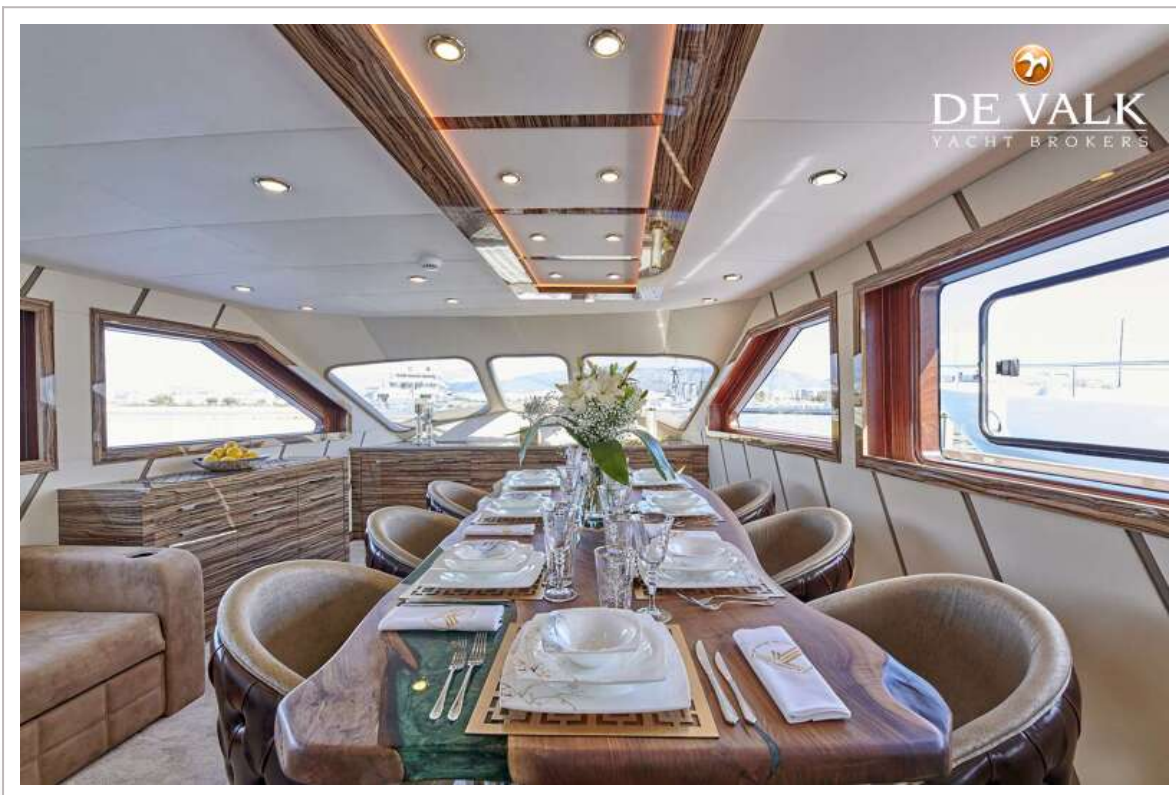


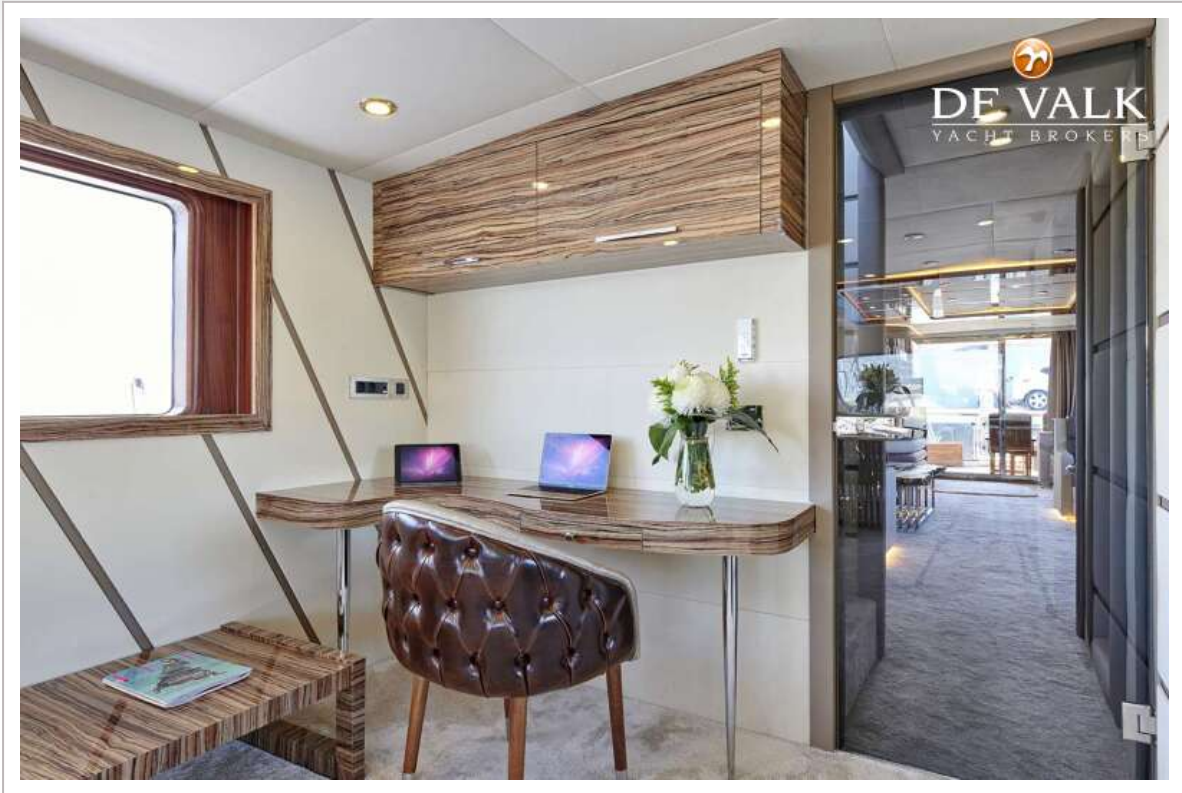


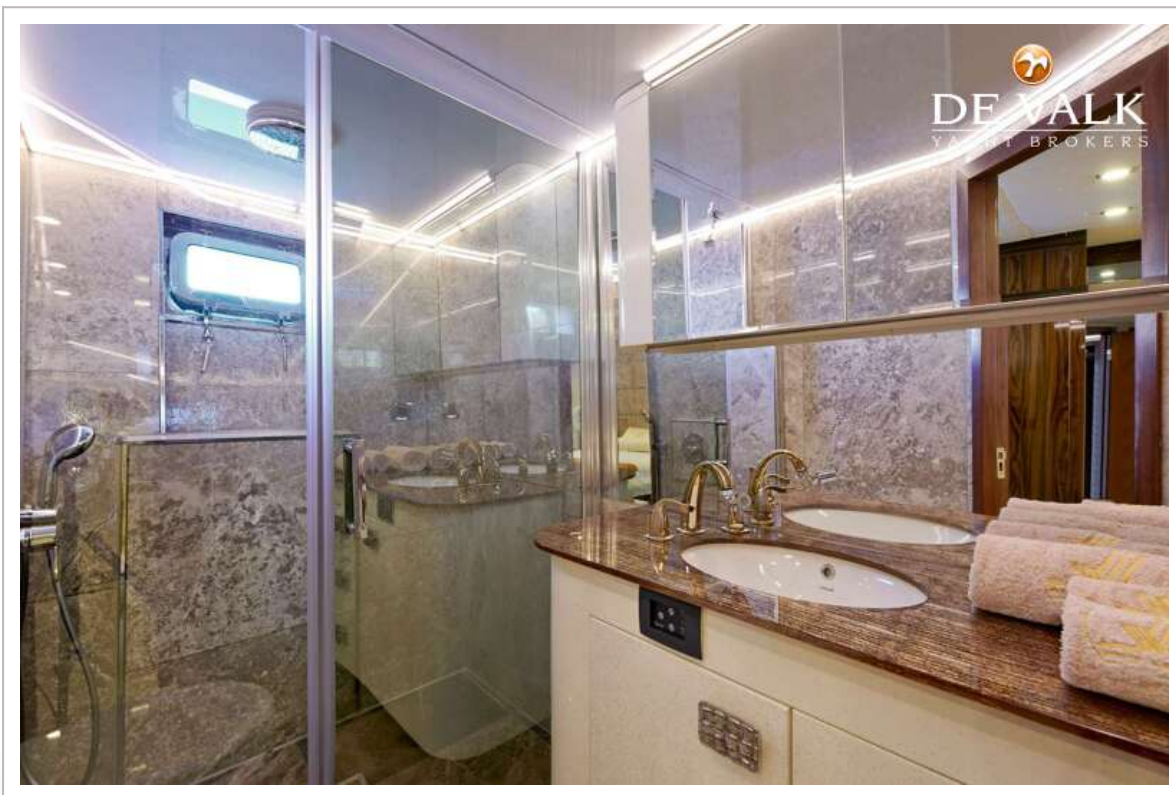
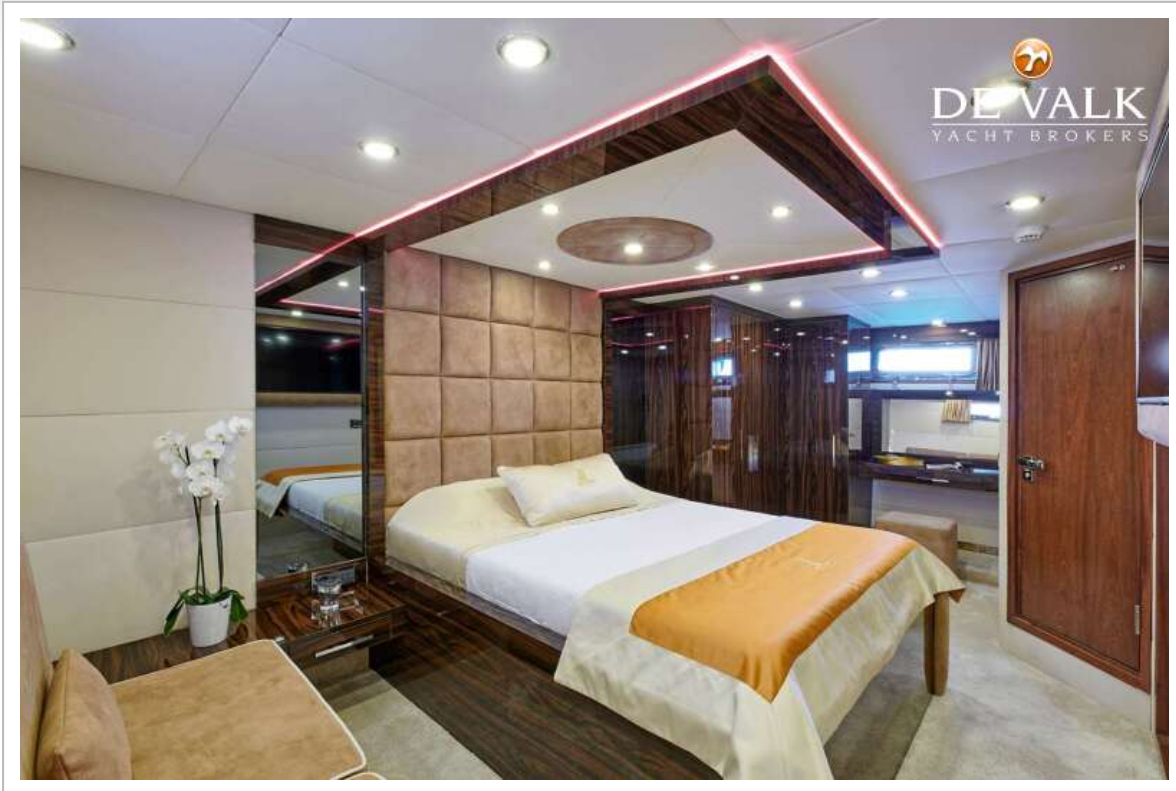


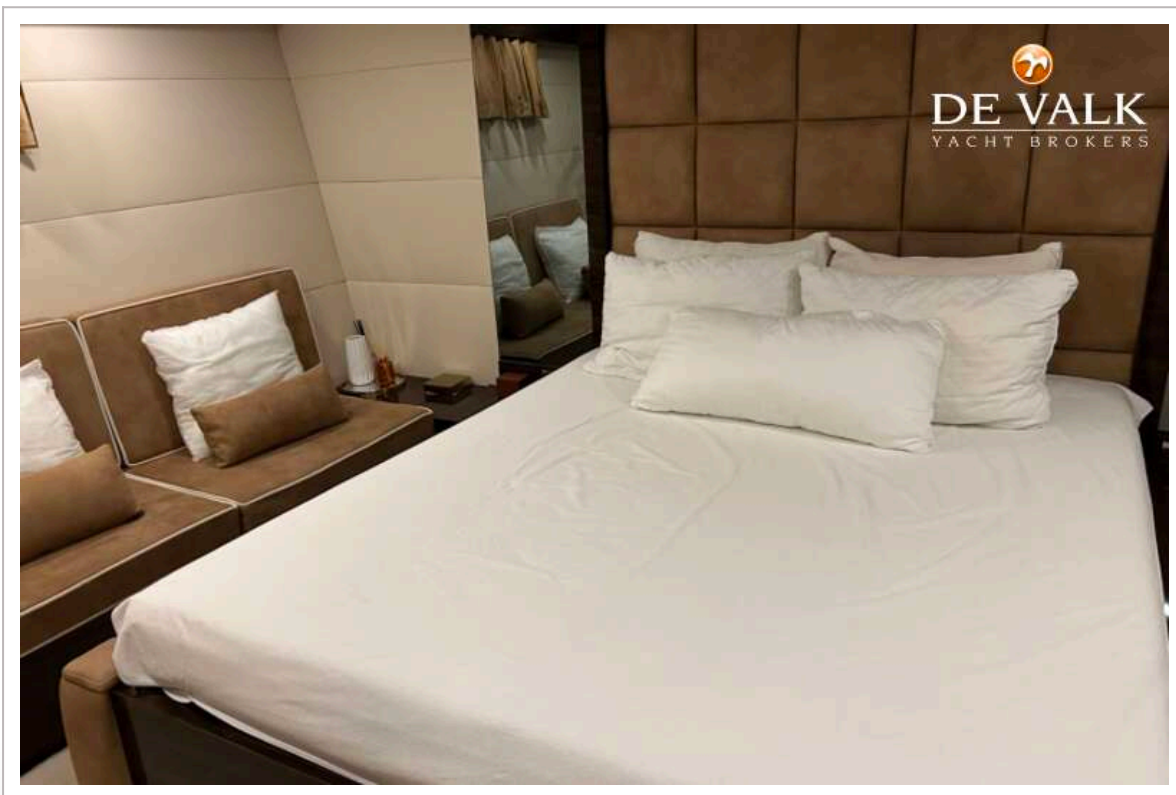
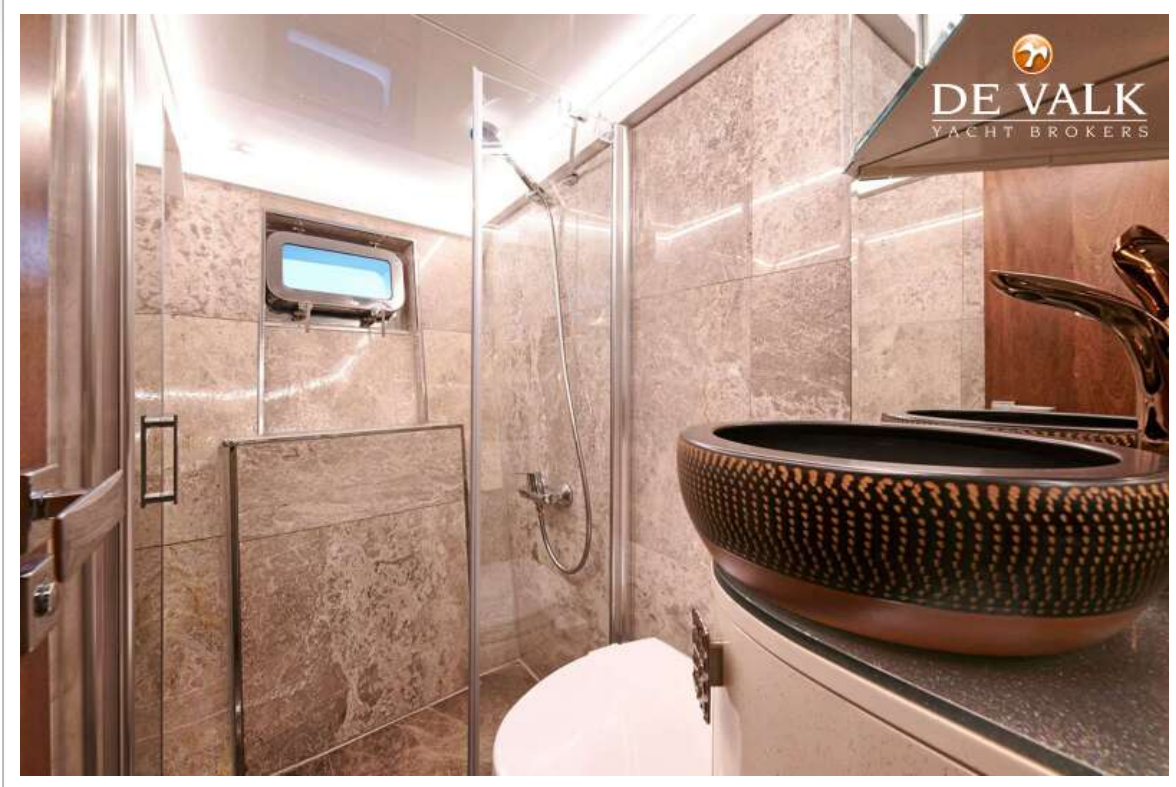


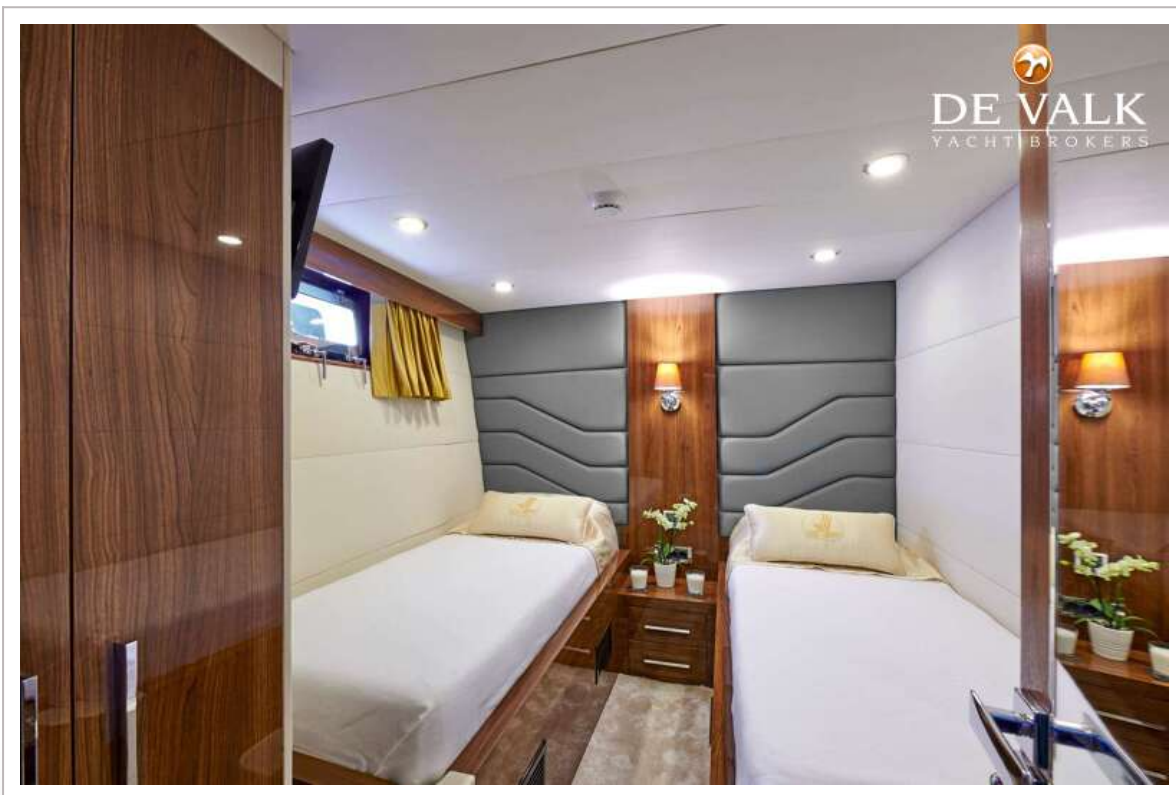




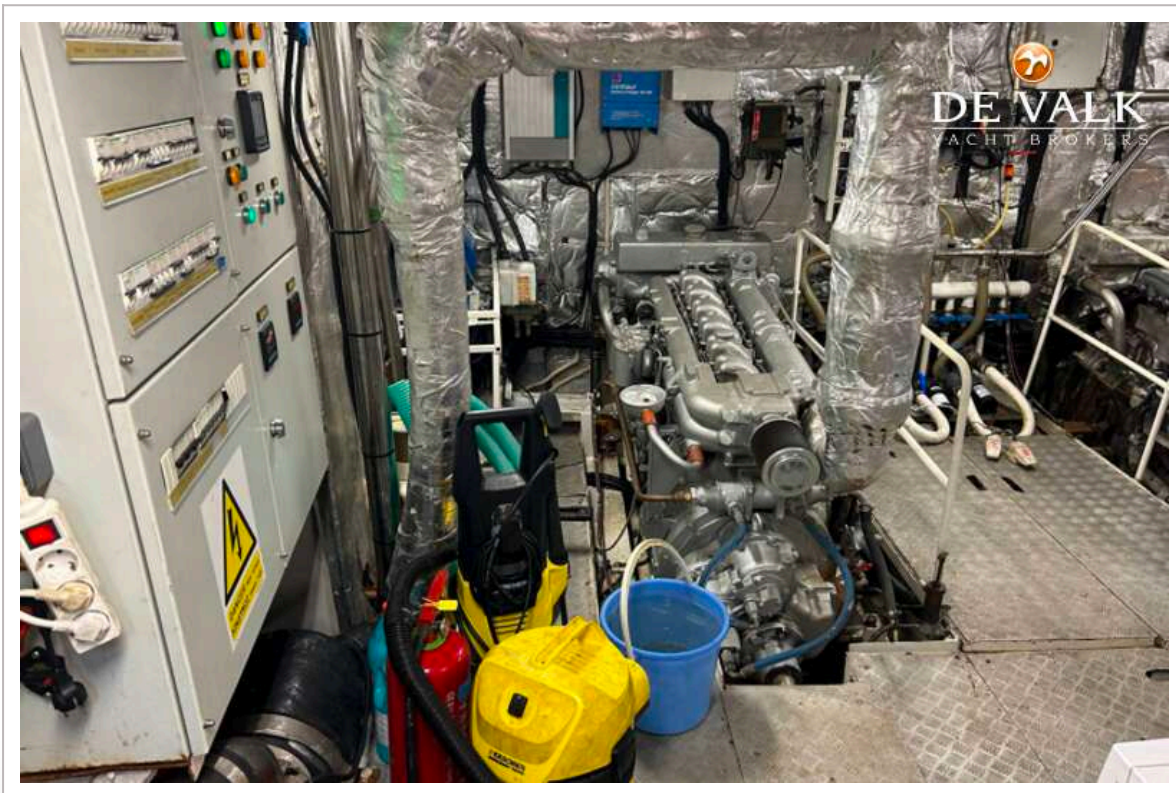




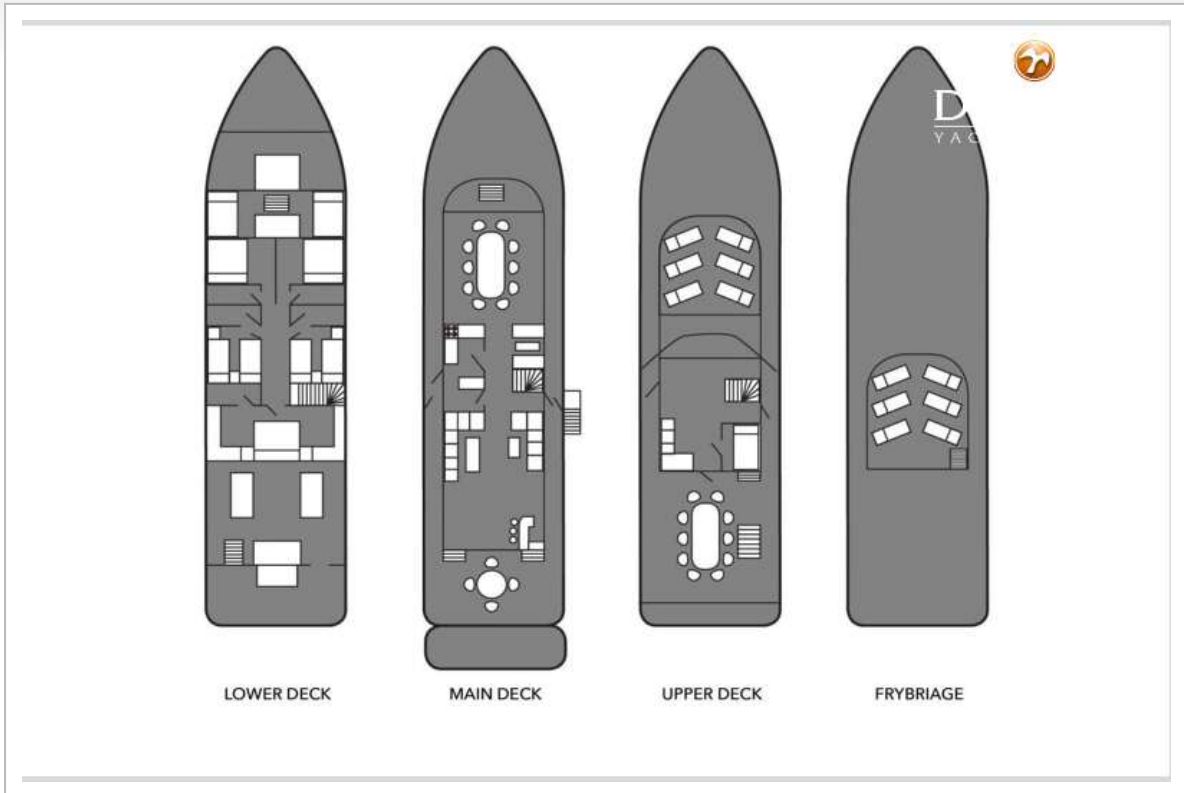








TORGEM 92



TORGEM 92

