



DE VALK  
YACHT BROKERS



## BAVARIA 55 CRUISER



DE VALK  
YACHT BROKERS

# BAVARIA 55 CRUISER

## BROKER'S COMMENTS

Experience luxury and performance with this Bavaria 55 Cruiser. Perfectly suited for extended voyages or relaxing coastal adventures, this spacious yacht offers comfort, style, and robust sailing capabilities. Equipped with advanced B&G navigation systems, it provides precision and ease on the water. Key features:  
Comprehensive B&G electronics package  
Generous living spaces and practical layout  
Ready to be customized for your next journey  
Seize the opportunity to own this Bavaria 55 Cruiser. the yacht is privately owned. Contact us today for more information or to schedule a viewing!

*Tihana Tadinac*

## SPECIFICATIONS

<b>Dimensions</b>	16.75 x 4.87 x 2.35 (m)	<b>Builder</b>	Bavaria Yachtbau
<b>Built</b>	2010	<b>Cabins</b>	4
<b>Material</b>	GRP	<b>Berths</b>	8
<b>Engine(s)</b>	1 x Volvo Penta D3-110 diesel	<b>Hp/Kw</b>	110 (hp), 80.96 (kw)
<b>Asking price</b>	€ 350.000 (VAT Not paid)	<b>Lying</b>	Croatia

## CONTACT

<b>Sales office</b>	De Valk Dalmatia	<b>Telephone</b>	+385 (0)218 68003
<b>Address</b>	Ul. Velimira Skorpika 22000 Sibenik Croatia	<b>E-mail</b>	dalmatia@devalk.nl

## DISCLAIMER

These particulars are given in good faith as supplied but cannot be guaranteed.



# BAVARIA 55 CRUISER

## GENERAL

<b>Model</b>	BAVARIA 55 CRUISER
<b>Type</b>	sailing yacht
<b>LOA (m)</b>	16,75
<b>LWL (m)</b>	14,96
<b>Beam (m)</b>	4,87
<b>Draft (m)</b>	2,35
<b>Year built</b>	2010
<b>Builder</b>	Bavaria Yachtbau
<b>Country</b>	Germany
<b>Designer</b>	Farr Design
<b>Displacement (t)</b>	18,59
<b>CE norm</b>	A
<b>Hull material</b>	GRP
<b>Hull colour</b>	white With grey lines
<b>Keel type</b>	bulb keel L shaped
<b>Superstructure material</b>	GRP
<b>Rubbing strake</b>	aluminum
<b>Deck material</b>	GRP
<b>Deck finish</b>	non-skid moulded in
<b>Cockpit deck finish</b>	teak
<b>Antifouling (year)</b>	2024
<b>Dorades</b>	yes
<b>Portholes</b>	aluminium
<b>Fuel tank (litre)</b>	stainless steel 380
<b>Level indicator (fuel tank)</b>	yes
<b>Freshwater tank (litre)</b>	polyethylene 700
<b>Level indicator (freshwater)</b>	yes
<b>Blackwater tank (litre)</b>	polyethylene 50
<b>Level indicator (blackwater)</b>	yes
<b>Blackwater tank extraction</b>	deck extraction



# BAVARIA 55 CRUISER

Wheel steering	cable steering With covers
Outside helm position	yes
Emergency tiller	yes

## ACCOMMODATION

Cabins	4
Berths	8
Interior	ash
Floor	woodprint
Heating	electric 220V
Air-conditioning	Cruisair Salon 16000 BTU, front cabin 12000 BTU
Chart table	yes
Aft Cabin	yes
Dinette	yes
Galley	yes
Countertop	plastic
Sink	Aluminium
Cooker	yes
Oven	Microwave
Fridge	177 ltr, with freezer compartment 44 ltr
Hot water system	220V + engine
Water pressure system	electrical
Coffee maker	yes
Owners cabin	double bed
Wardrobe	hanging/drawers/shelves
Bathroom	en suite
Toilet	en suite
Toilet system	electric
Wash basin	in the bathroom
Shower	en suite
Guest cabin 1	bunk bed



# BAVARIA 55 CRUISER

Wardrobe	hanging and drawers
Bathroom	shared
Toilet	shared
Toilet system	electric
Wash basin	at the toilet
Shower	shared
Guest cabin 2	double bed
Wardrobe	hanging/drawers/shelves
Toilet	en suite
Toilet system	electric
Wash basin	at the toilet
Shower	shared
Guest cabin 3	double bed
Wardrobe	hanging/drawers/shelves
Toilet	shared
Toilet system	electric
Wash basin	at the toilet
Shower	shared
Extra info	Office cabin
Extra info	Dometic Coolmatic Cooler 20 ltr

## MACHINERY

No of engines	1
Make	Volvo Penta
Type	D3-110
HP	110
kW	80.96
Fuel	diesel
Engine hours	2000
Gearbox	mechanical
Engine controls	electrical



# BAVARIA 55 CRUISER

<b>Bowthruster</b>	electric
<b>Exhaust</b>	watercooled
<b>Propeller type</b>	fixed
<b>Manual bilge pump</b>	yes
<b>Electric bilge pump</b>	yes
<b>Bilge alarm</b>	yes
<b>Electrical installation</b>	yes
<b>Generator</b>	Fisher Panda 4.5 Kw
<b>Batteries</b>	yes
<b>Start battery</b>	1x Victron AGM 130Ah
<b>Service battery</b>	3x Victron LifePo4 200Ah
<b>Generator battery</b>	1x Victron AGM 90Ah
<b>Bowthruster battery</b>	Victron AGM 130Ah
<b>Windlass battery</b>	Victron AGM 90Ah
<b>Battery monitor</b>	Victron met GX touch lcd
<b>Battery charger</b>	Victron AC/DC
<b>Battery charger/inverter</b>	Victron Multi Plus 3000W
<b>Solar panel</b>	2x Victron 350W/peak each
<b>Shorepower</b>	with cable

## NAVIGATION

<b>Compass</b>	B&G Precision 9
<b>Depth sounder</b>	yes
<b>Forw. looking depth sounder</b>	yes
<b>Log</b>	yes
<b>Windset</b>	B&G WS320
<b>Repeater</b>	6x B&G Triton2
<b>VHF</b>	B&G V60-B
<b>VHF handheld</b>	B&G H60
<b>Autopilot</b>	B&G NAC-3 with remote control WR10
<b>Rudder angle indicator</b>	yes



# BAVARIA 55 CRUISER

<b>Radar</b>	B&G HALO24 Pulse
<b>GPS</b>	B&G
<b>Plotter</b>	yes
<b>Plotter/GPS</b>	B&G Vulcan 9" MFD
<b>Radar/GPS</b>	B&G
<b>AIS receiver</b>	NAIS-500 Class B
<b>Radio receiver</b>	yes
<b>Transmitter</b>	yes
<b>Extra info</b>	Victron Cerbo GX
<b>Extra info</b>	Navico NSPL-500 Antenna splitter

## EQUIPMENT

<b>Sprayhood</b>	yes
<b>Sprayhood with grab rail</b>	yes
<b>Cockpit cushions</b>	yes
<b>Cockpit table</b>	yes
<b>Bathing platform</b>	Electric lifting system
<b>Boarding ladder</b>	yes
<b>Transom door</b>	yes
<b>Gangway</b>	Manual by ropes
<b>Deck shower</b>	yes
<b>Anchor</b>	Delta
<b>Anchor chain</b>	85 meters stainless steel
<b>Windlass</b>	electrical
<b>Dinghy</b>	3,75 mtrs, electric outboard
<b>Sea railing</b>	aluminum
<b>Pushpit</b>	yes
<b>Pulpit</b>	yes
<b>Life raft</b>	yes
<b>Lifejackets</b>	yes
<b>Safety harness</b>	yes



# BAVARIA 55 CRUISER

Lifebuoy	yes
Safety lines on deck	yes
Radar reflector	yes
Fenders	yes
Mooring lines	yes
Alarm system	yes
TV	yes
Radio-cd player	yes
Cockpit speakers	Hertz
Speakers in salon	yes
Fire extinguisher	yes

## RIGGING

Rigging	fractional with backstays
Brand mast	Seldén
Material mast	aluminium
Spreaders	yes
Mainsail	With vertical battens
Genoa	120%
Genoa furler	yes
Code Zero	With furling
Gennaker	yes
Reefing System	main in-mast furling
Boomvang	gasspring
Primary sheet winch	2x Lewmar 48
Genoa sheetwinches	2x Lewmar 58
Halyard winches	2x Lewmar 58
Reefing winch	Lewmar
Winchcovers	yes
Gennaker pole	GRP





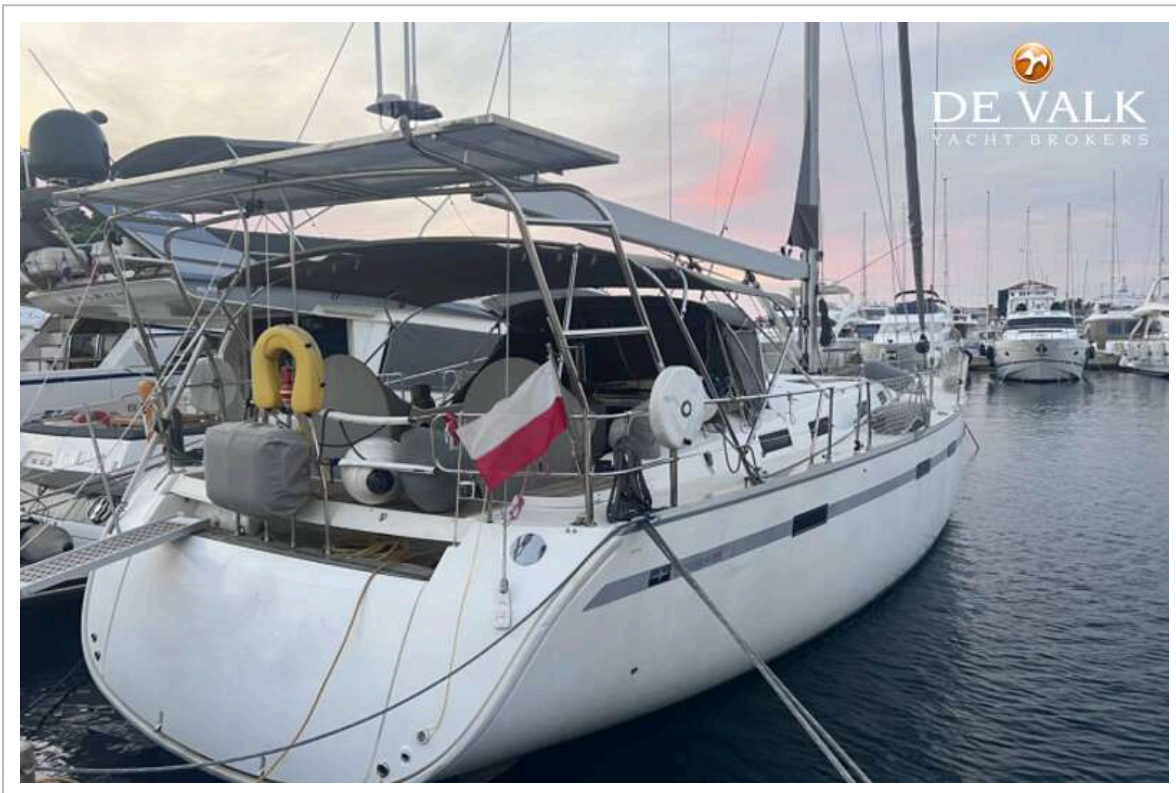
# BAVARIA 55 CRUISER



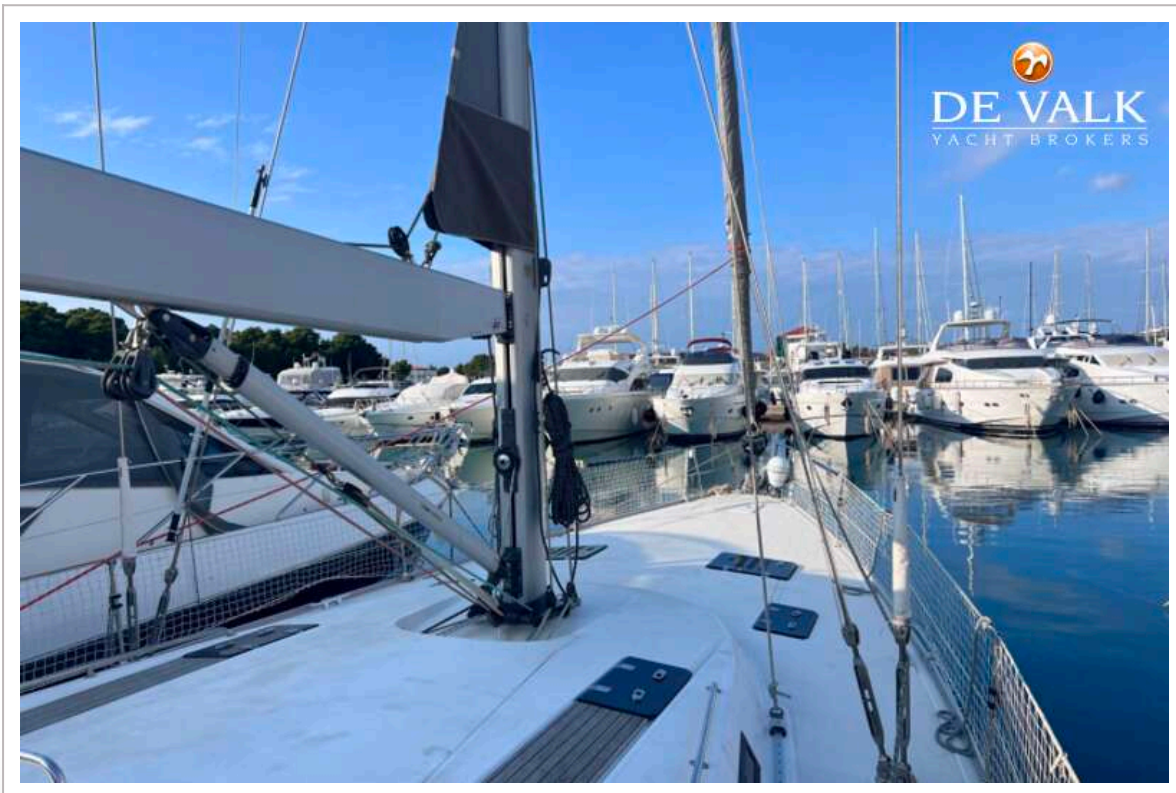
# BAVARIA 55 CRUISER



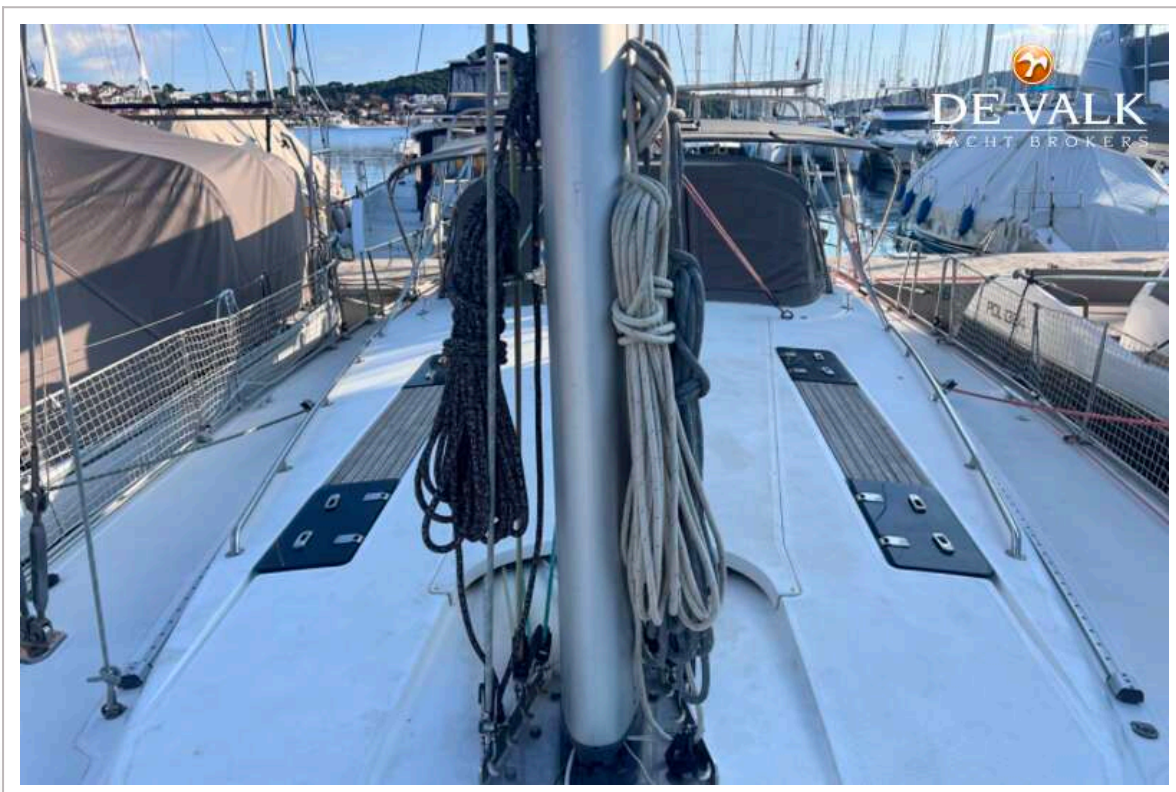
# BAVARIA 55 CRUISER



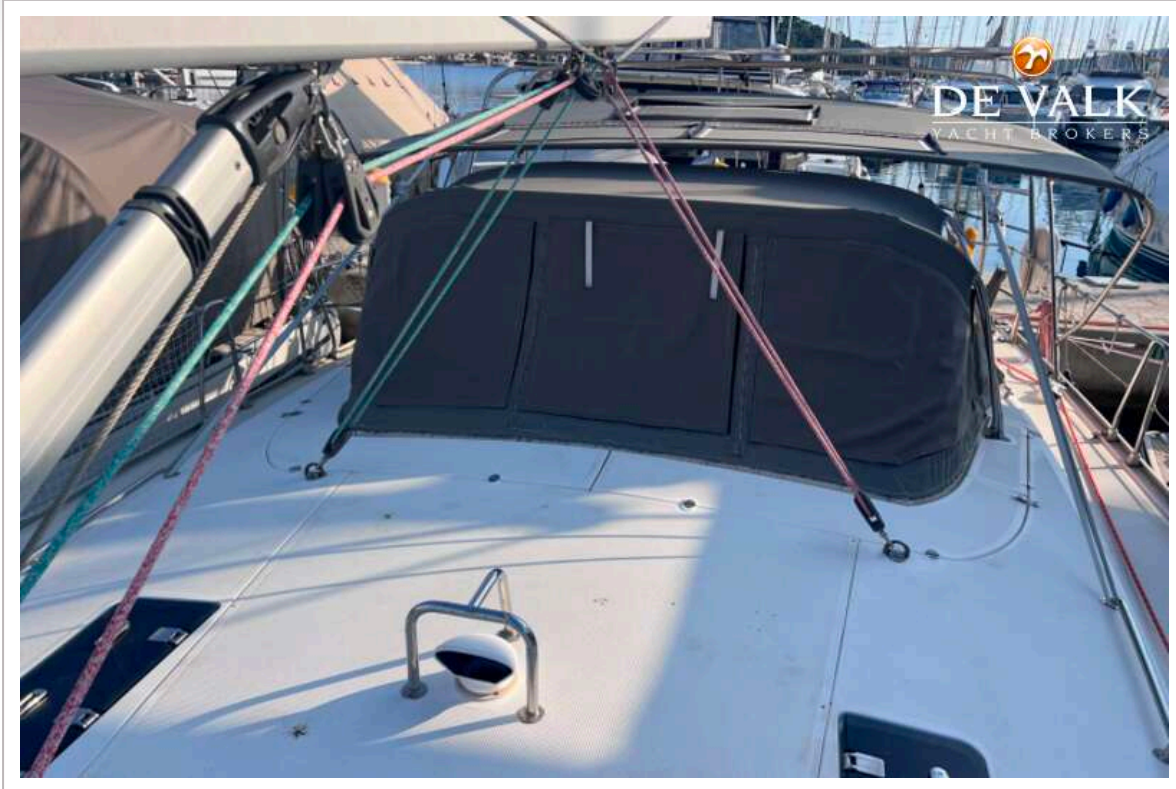
# BAVARIA 55 CRUISER



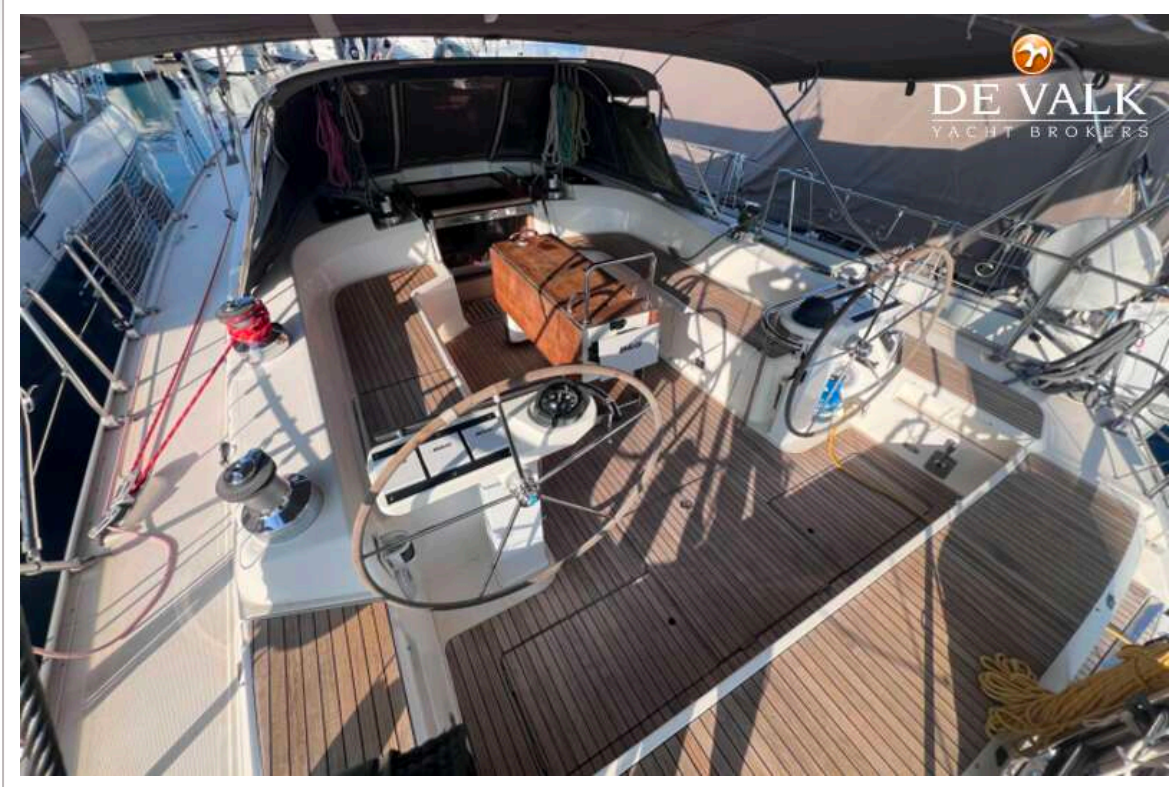
# BAVARIA 55 CRUISER



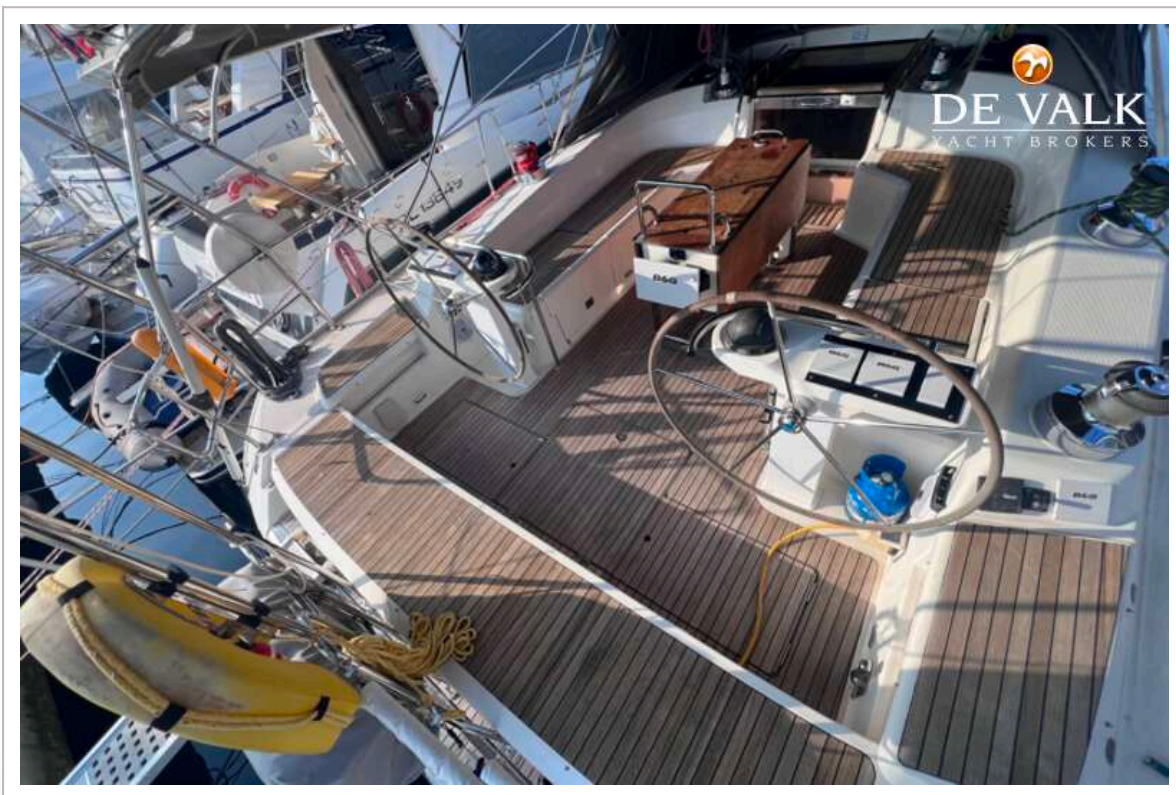
# BAVARIA 55 CRUISER



# BAVARIA 55 CRUISER



# BAVARIA 55 CRUISER

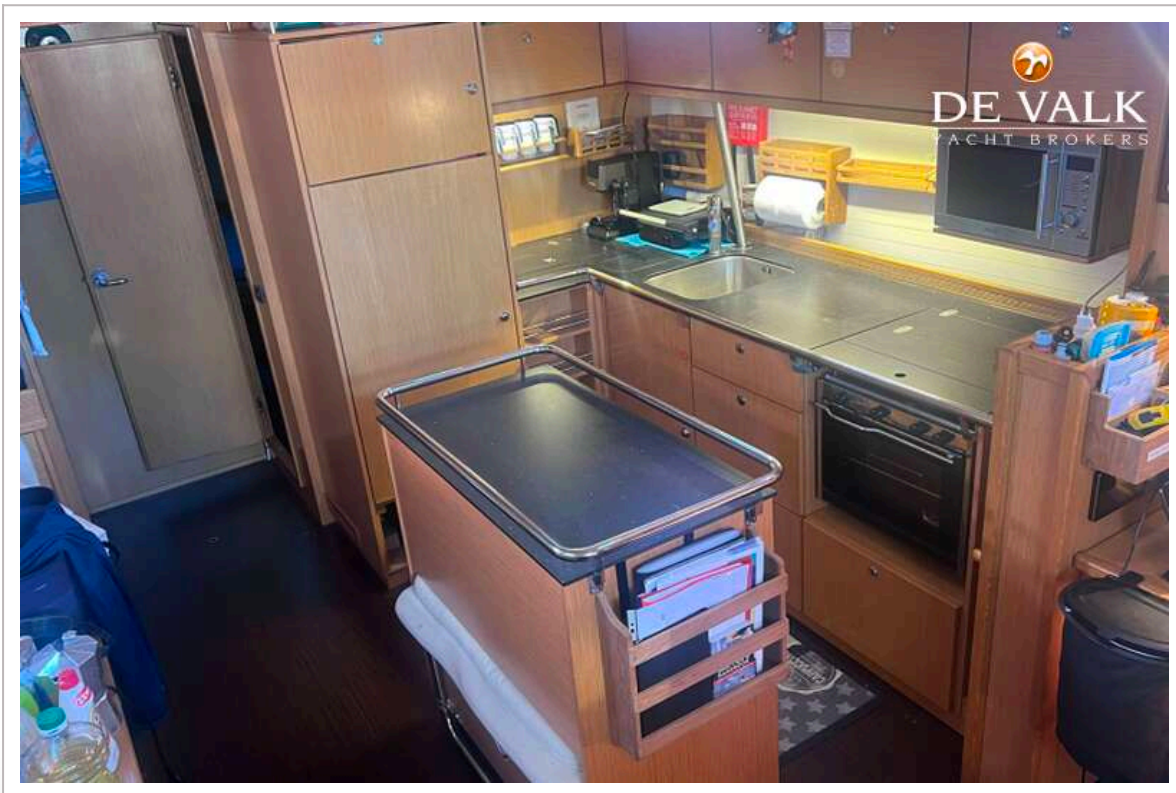
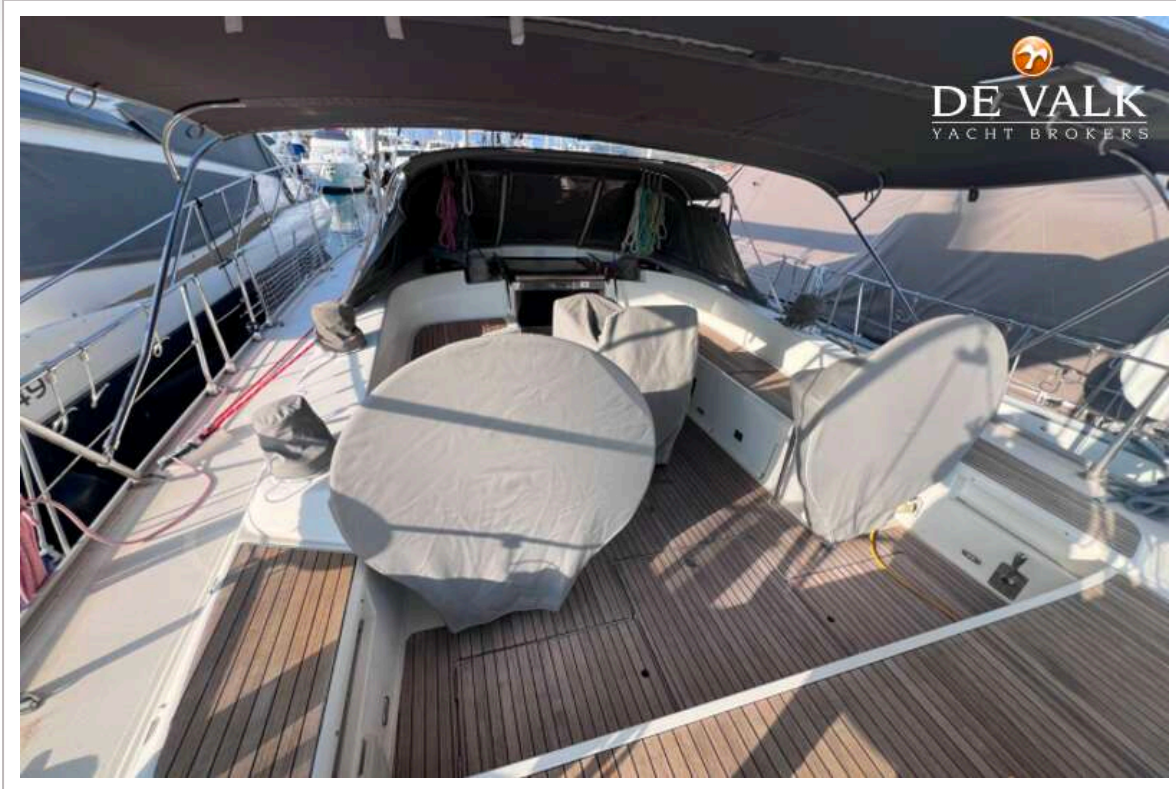




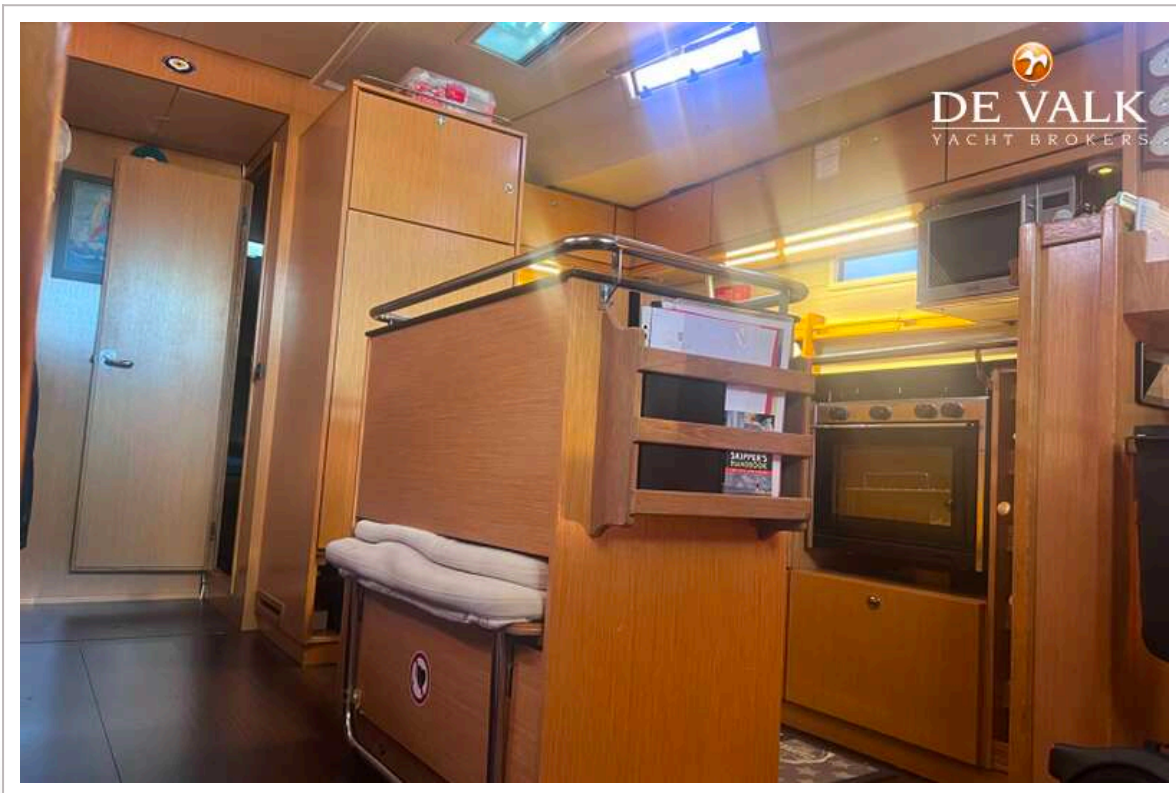
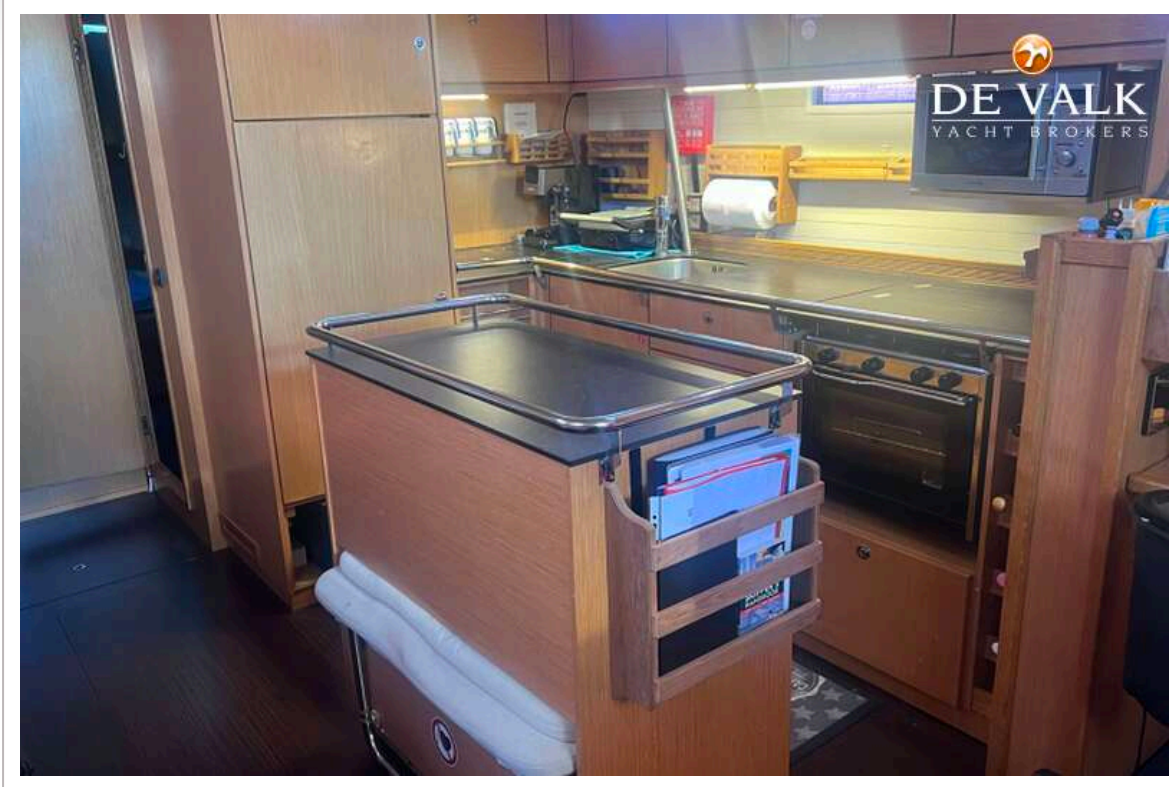
# BAVARIA 55 CRUISER



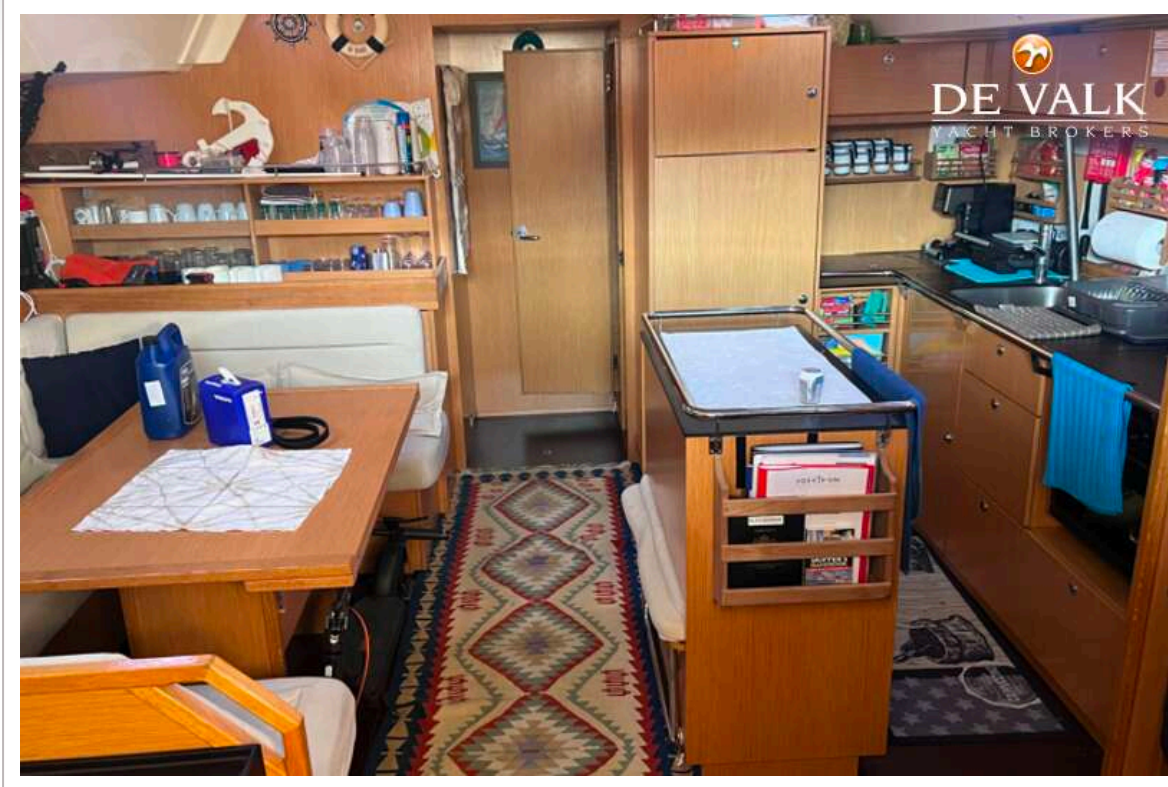
# BAVARIA 55 CRUISER



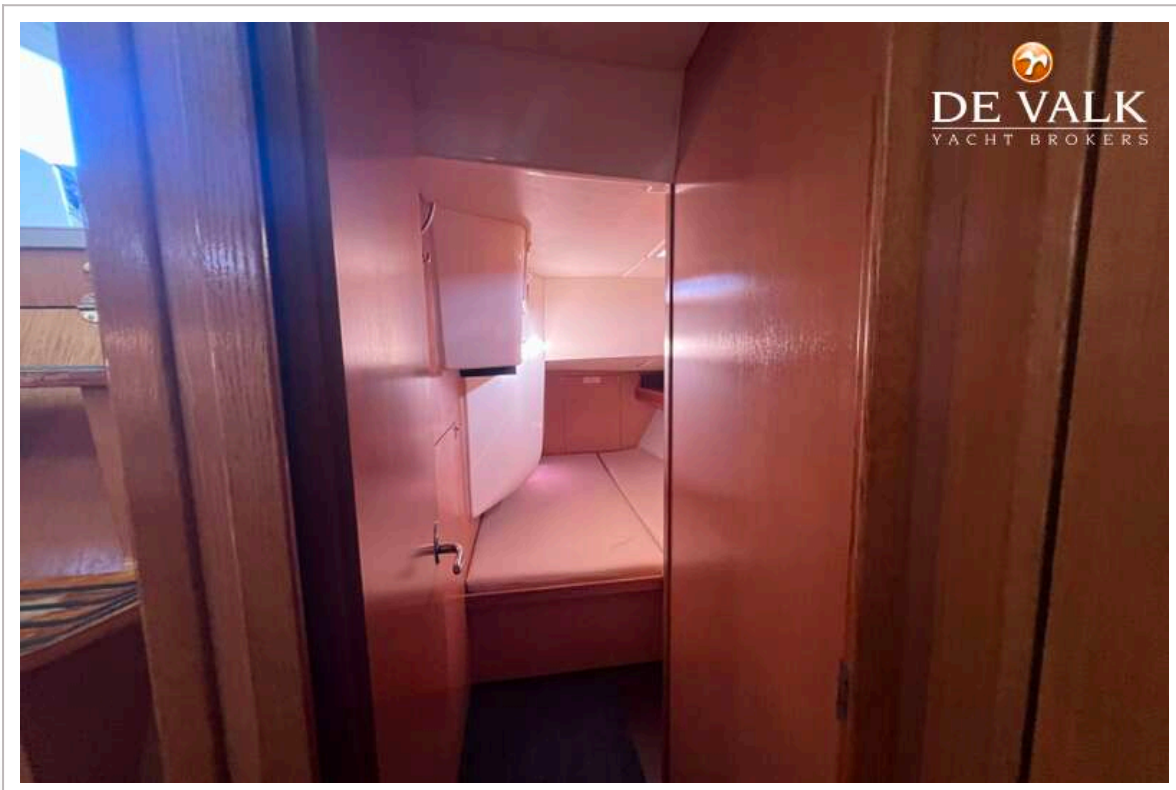
# BAVARIA 55 CRUISER



# BAVARIA 55 CRUISER



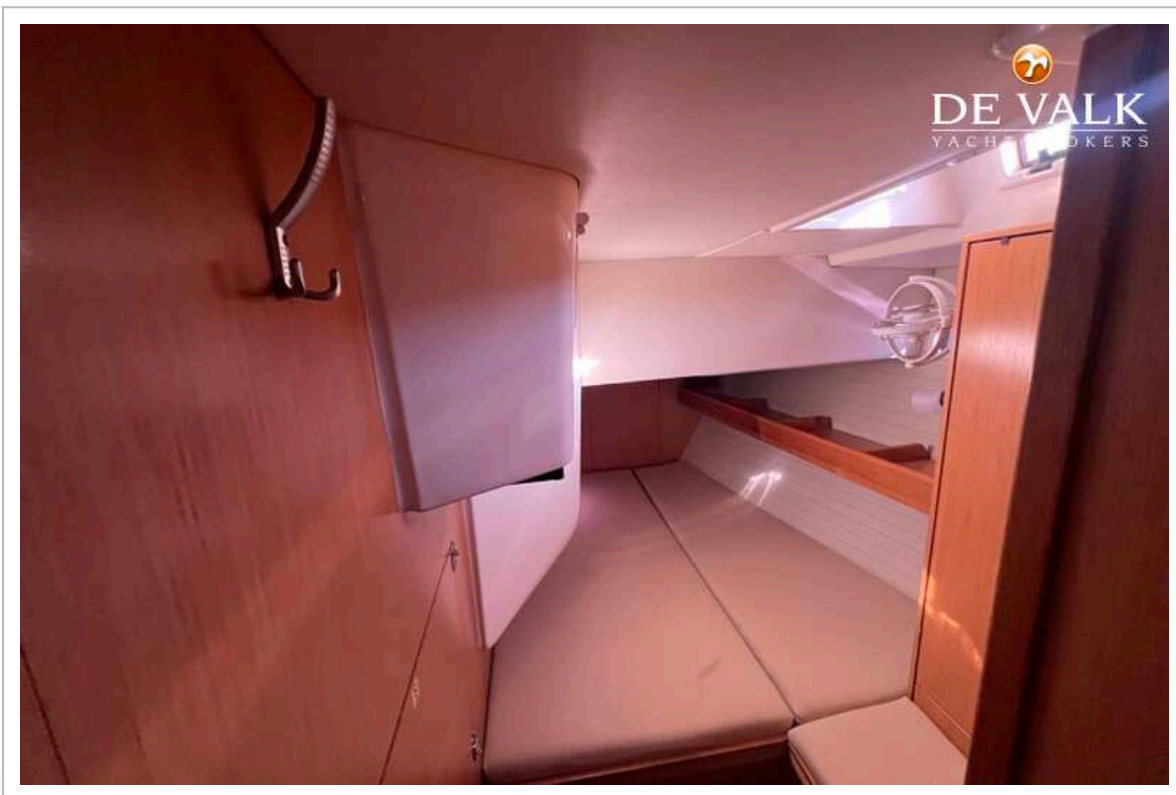
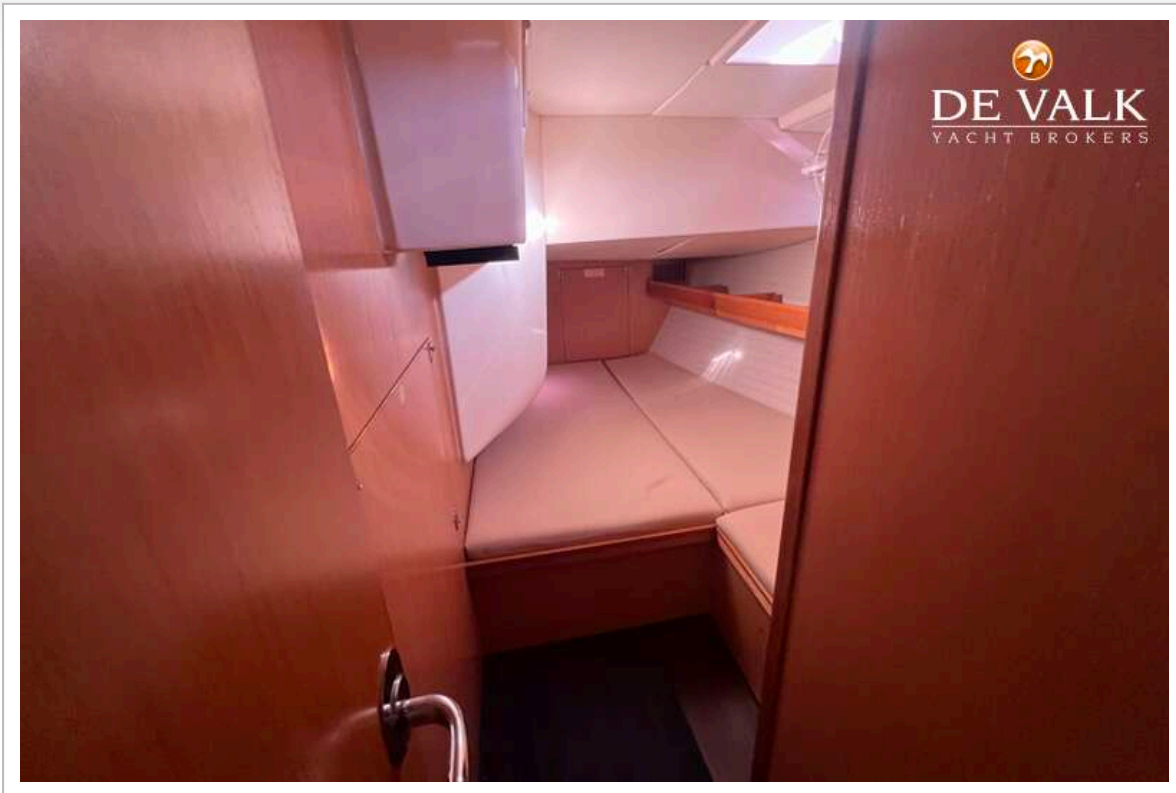
# BAVARIA 55 CRUISER



# BAVARIA 55 CRUISER



# BAVARIA 55 CRUISER



# BAVARIA 55 CRUISER





# BAVARIA 55 CRUISER

