



BULK CARGO SHIP 68 M



DE VALK  
YACHT BROKERS

# BULK CARGO SHIP 68 M

## BROKER'S COMMENTS

General cargo vessel built in 1966 by SSW SCHICHAU SEEBECK SHIPYARD - BREMERHAVEN, GERMANY. Currently sailing under the flag of Greece. Previous names: OLGA, UNIQUE, DETTERN, BLEKING, BREMER MERCUR. It's gross tonnage is 499t.

*Sofia Iliia-Salvanou*

## SPECIFICATIONS

<b>Dimensions</b>	68.00 x 10.83 x 4.00 (m)	<b>Builder</b>	SSW SCHICHAU SEEBECK SHIPYARD BREMERHAVE
<b>Built</b>	1966	<b>Cabins</b>	
<b>Material</b>	Steel	<b>Berths</b>	
<b>Engine(s)</b>	1 x ALPHA BULLMEISTER diesel	<b>Hp/Kw</b>	0.00 (hp), 0.00 (kw)
<b>Asking price</b>	€ 300.000 (VAT Not paid)	<b>Lying</b>	elsewhere / Not at sales office

## CONTACT

<b>Sales office</b>	De Valk Corfu	<b>Telephone</b>	(+30) 266 111 8095
<b>Address</b>	New Port of Corfu, near Gouvia Marina 490 83 Corfu Greece	<b>E-mail</b>	corfu@devalk.nl

## DISCLAIMER

These particulars are given in good faith as supplied but cannot be guaranteed.



# BULK CARGO SHIP 68 M

## GENERAL

<b>Model</b>	BULK CARGO SHIP 68 M
<b>Type</b>	motor yacht
<b>LOA (m)</b>	68,00
<b>Beam (m)</b>	10,83
<b>Draft (m)</b>	4,00
<b>Year built</b>	1966
<b>Builder</b>	SSW SCHICHAU SEEBECK SHIPYARD BREMERHAVE
<b>Country</b>	Germany
<b>Gross tonnage</b>	499
<b>Net tonnage</b>	DEADWEIGHT: 1.115 T
<b>Hull material</b>	steel
<b>Fuel tank (litre)</b>	steel 140.000

## MACHINERY

<b>No of engines</b>	1
<b>Make</b>	ALPHA BULLMEISTER
<b>Fuel</b>	diesel
<b>Year of overhaul</b>	2018
<b>Maximum speed (kn)</b>	11
<b>Cruising speed (kn)</b>	9
<b>Consumption (l/hr)</b>	150
<b>Drive</b>	shaft



BULK CARGO SHIP 68 M



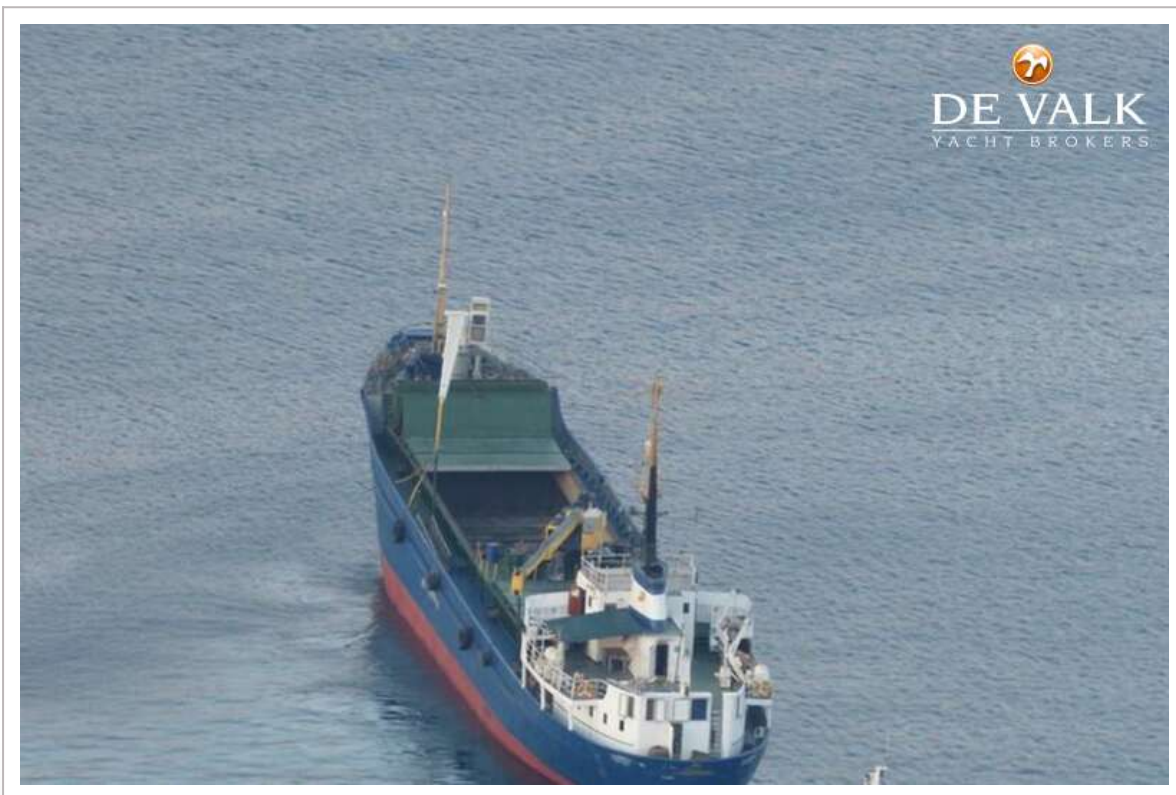
BULK CARGO SHIP 68 M



# BULK CARGO SHIP 68 M



# BULK CARGO SHIP 68 M



# BULK CARGO SHIP 68 M





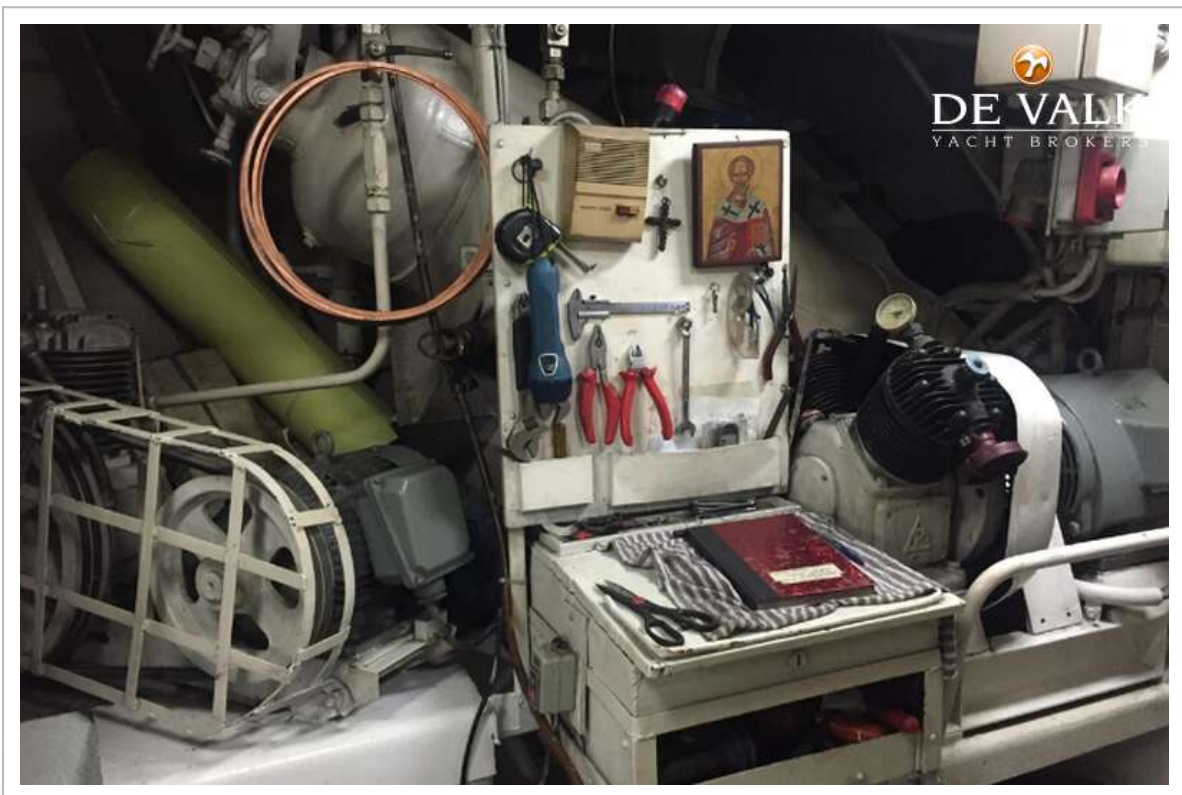
# BULK CARGO SHIP 68 M



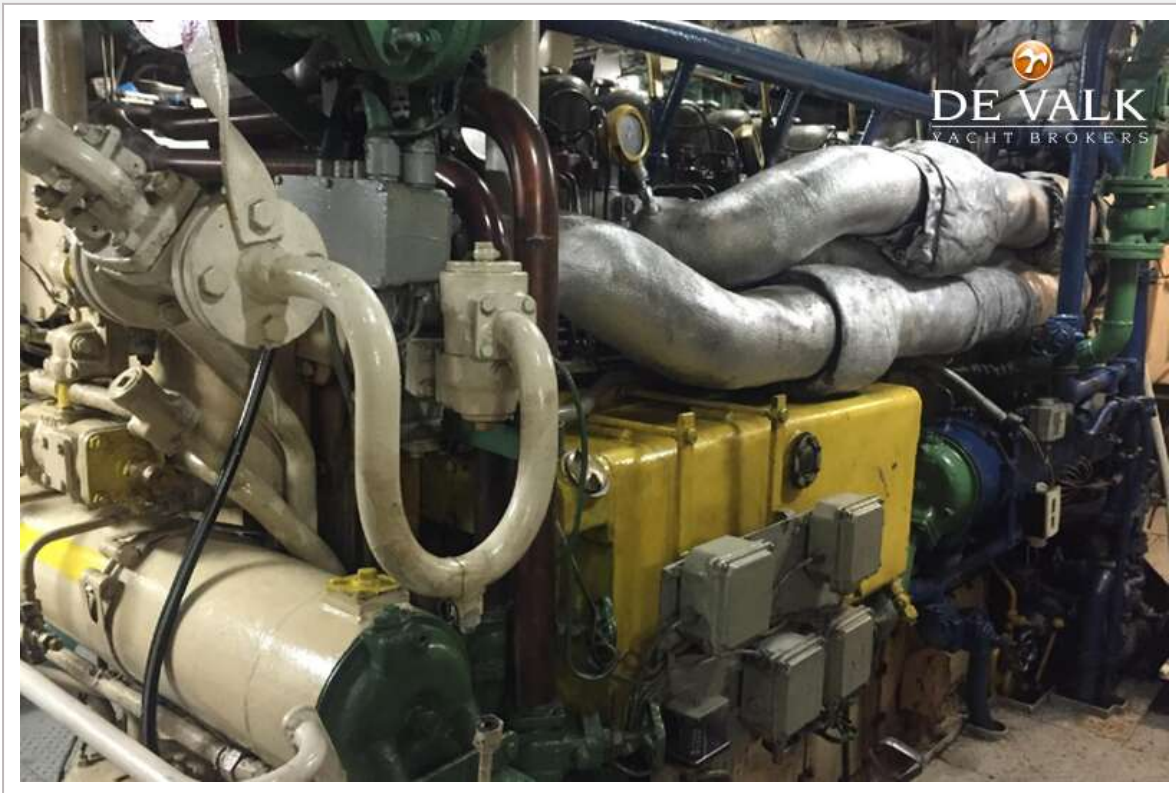
# BULK CARGO SHIP 68 M



# BULK CARGO SHIP 68 M



# BULK CARGO SHIP 68 M



BULK CARGO SHIP 68 M



# BULK CARGO SHIP 68 M



BULK CARGO SHIP 68 M

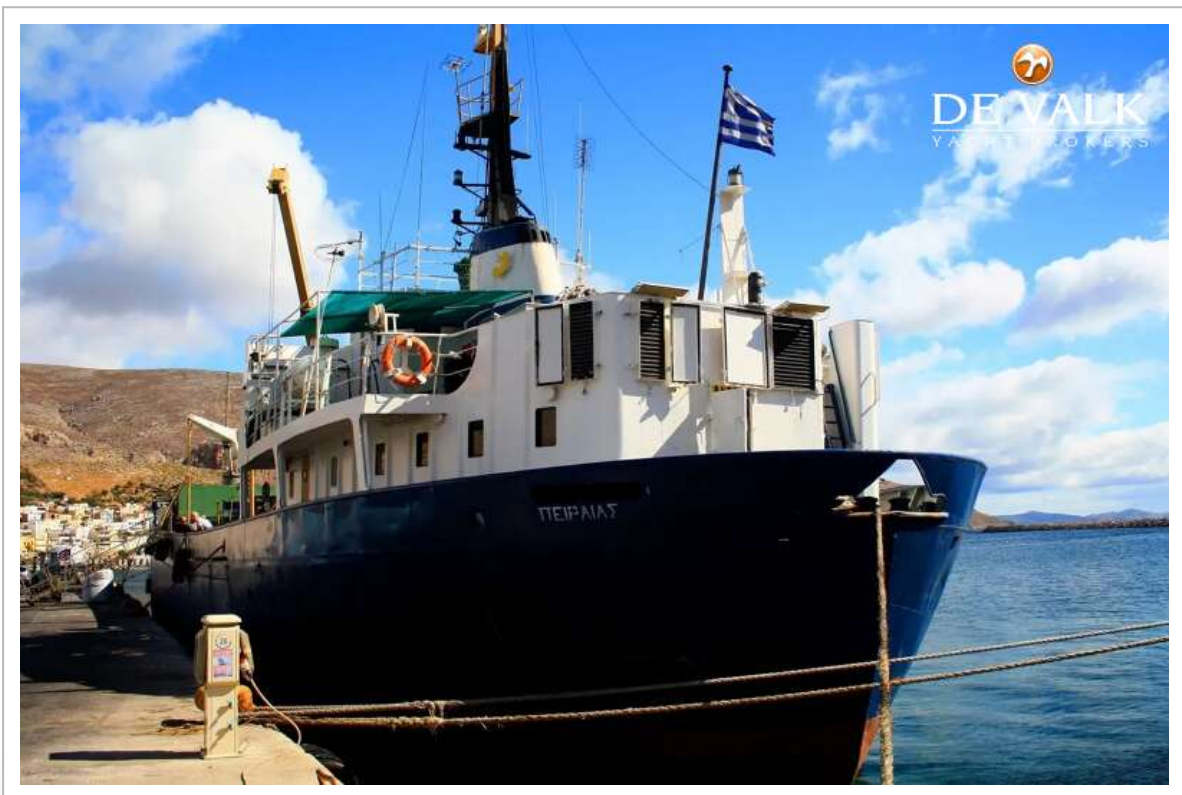


# BULK CARGO SHIP 68 M





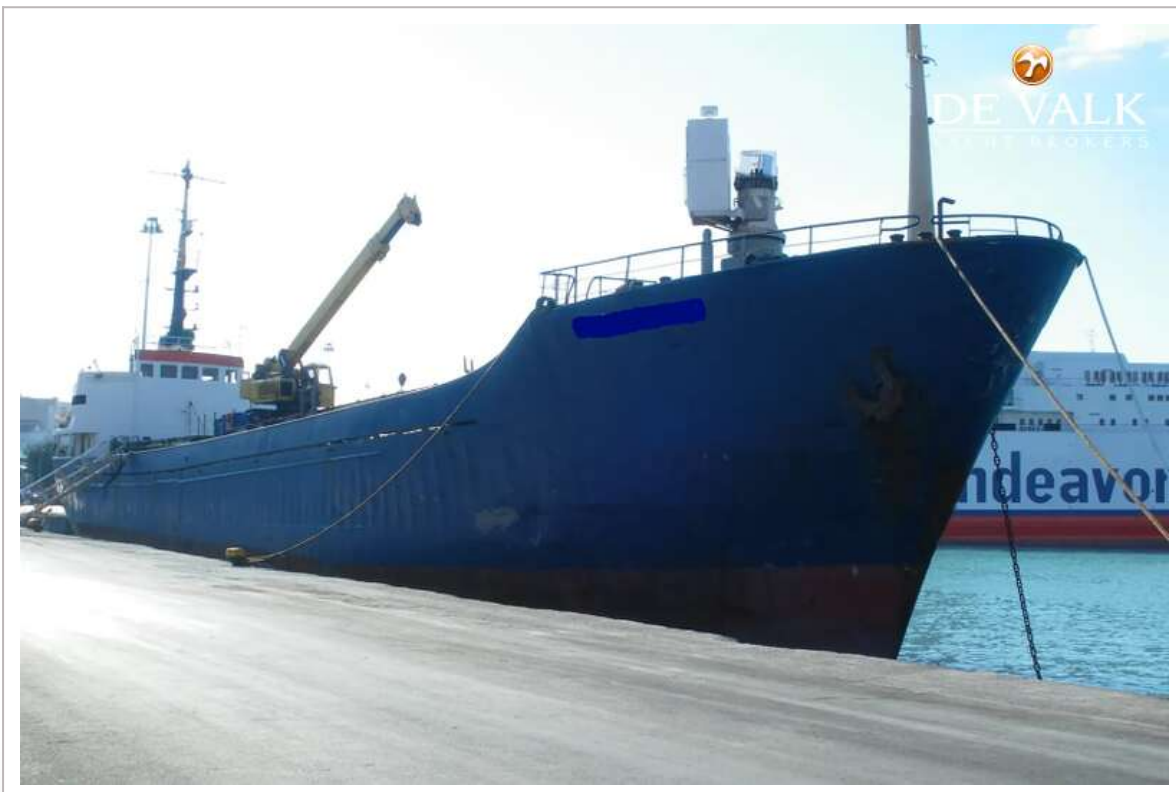
# BULK CARGO SHIP 68 M



# BULK CARGO SHIP 68 M



# BULK CARGO SHIP 68 M



BULK CARGO SHIP 68 M

