



DE VALK  
YACHT BROKERS



## MONTE CARLO YACHTS MCY 70



DE VALK  
YACHT BROKERS

# MONTE CARLO YACHTS MCY 70

## BROKER'S COMMENTS

A beautiful design and popular model flybridge, the Monte Carlo Yachts 70 Flybridge with hardtop offers a 4 cabin layout, large saloon with dining table and open galley, a large cockpit and hydraulic bathing platform, large flybridge and fully equipped wetbar. she offers a joystick and separate remote control docking station. a great privately used family yacht and ready to go.

*Maarten de Kroon*

## SPECIFICATIONS

<b>Dimensions</b>	21.31 x 5.41 x 1.65 (m)	<b>Builder</b>	Monte Carlo Yachts
<b>Built</b>	2015	<b>Cabins</b>	4
<b>Material</b>	GRP	<b>Berths</b>	8
<b>Engine(s)</b>	2 x MAN V8 twin diesel	<b>Hp/Kw</b>	2 x 1,200.00 (hp), 883.20 (kw)
<b>Asking price</b>	€ 1.749.000 (VAT Not paid)	<b>Lying</b>	Thailand

## CONTACT

<b>Sales office</b>	De Valk Asia	<b>Telephone</b>	+65 826 679 95
<b>Address</b>	Penang region Penang Malaysia	<b>E-mail</b>	asia@devalk.nl

## DISCLAIMER

These particulars are given in good faith as supplied but cannot be guaranteed.



## GENERAL

<b>Model</b>	MONTE CARLO YACHTS MCY 70
<b>Type</b>	motor yacht
<b>LOA (m)</b>	21,31
<b>Beam (m)</b>	5,41
<b>Draft (m)</b>	1,65
<b>Headroom (m)</b>	2,00
<b>Year built</b>	2015
<b>Builder</b>	Monte Carlo Yachts
<b>Country</b>	Italy
<b>Designer</b>	Nuvolari Lenard
<b>Displacement (t)</b>	47
<b>CE norm</b>	A
<b>Hull material</b>	GRP
<b>Hull colour</b>	Roman Bronze
<b>Superstructure material</b>	GRP
<b>Deck material</b>	GRP
<b>Deck finish</b>	teak
<b>Cockpit deck finish</b>	teak
<b>Window frame</b>	stainless steel
<b>Window material</b>	tempered glass
<b>Portholes</b>	stainless steel
<b>Flybridge</b>	yes
<b>Flybridge cover</b>	Hard top
<b>Radar arch</b>	non collapsible
<b>Fuel tank (litre)</b>	4000
<b>Level indicator (freshwater)</b>	840
<b>Blackwater tank (litre)</b>	320
<b>Greywater tank (litre)</b>	320
<b>Inside helm position</b>	yes
<b>Flybridge helm position</b>	yes



## ACCOMMODATION

<b>Cabins</b>	4
<b>Berths</b>	8
<b>Crew cabin</b>	yes
<b>Crew berths</b>	2
<b>Floor</b>	wood
<b>Aft deck</b>	yes
<b>Headroom saloon (m)</b>	2
<b>Air-conditioning</b>	reverse cycle airco
<b>Dinette</b>	yes
<b>Sliding door to cockpit</b>	yes
<b>Opening door to cockpit</b>	yes
<b>Sliding door to aft deck</b>	yes
<b>Galley</b>	yes
<b>Countertop</b>	marble
<b>Sink</b>	stainless steel
<b>Cooker</b>	induction Miele
<b>Extractor</b>	yes
<b>Microwave/oven combi</b>	yes
<b>Fridge</b>	Miele
<b>Freezer</b>	Miele
<b>Wine cooler</b>	Isotherm
<b>Hot water system</b>	yes
<b>Water pressure system</b>	yes
<b>Crockery</b>	yes
<b>Owners cabin</b>	double bed Master room
<b>Bed length (m)</b>	2
<b>Wardrobe</b>	walk-in closet
<b>Bathroom</b>	en suite
<b>Guest cabin 1</b>	double bed VIP room
<b>Bed length (m)</b>	2



Wardrobe	hanging/drawers/shelves
Bathroom	en suite
Guest cabin 2	yes
Bed length (m)	2
Bathroom	en suite
Guest cabin 3	yes
Bed length (m)	2
Washing machine	Electrolux
Wet bar	yes

## MACHINERY

No of engines	2
Make	MAN
Type	V8 twin
HP	1200
kW	883.20
Fuel	diesel
Year installed	2015
Maximum speed (kn)	31
Cruising speed (kn)	26
Range (nm)	280
Engine cooling system	seawater
Drive	shaft
Engine controls	electrical
Gearbox	ZF 500 - 1 IV
Bowthruster	electric
Sternthruster	electric
Propeller type	fixed
Propeller shaft material	stainless steel
Manual bilge pump	yes
Electric bilge pump	yes



<b>Bilge alarm</b>	yes
<b>Electrical installation</b>	yes
<b>Generator</b>	Kohler 20kVA
<b>Running hours generator</b>	2443
<b>Generator 2</b>	Kohler 20 kVA
<b>Running hours generator 2</b>	2431
<b>Batteries</b>	yes
<b>Inverter</b>	yes
<b>Battery charger/inverter</b>	yes
<b>Shorepower</b>	with cable Double
<b>Watermaker</b>	yes
<b>Stabilizers</b>	0-speed Seakeeper
<b>Trimtabs</b>	Humphree

## NAVIGATION

<b>Compass</b>	yes
<b>Compass on flybridge</b>	yes
<b>Multi control display</b>	yes
<b>Depth sounder</b>	yes
<b>Log</b>	yes
<b>Windset</b>	yes
<b>Repeater</b>	yes
<b>VHF</b>	2x Raymarine
<b>VHF handheld</b>	yes
<b>Autopilot</b>	Raymarine
<b>Rudder angle indicator</b>	yes
<b>Radar</b>	Raymarine
<b>Radar/GPS/plotter</b>	4x MPD
<b>Electronic chart(s)</b>	yes
<b>AIS transponder</b>	yes
<b>EPIRB</b>	GME



Camera	yes
Navigation lights	yes
Searchlight	yes

## EQUIPMENT

Fixed windscreen	yes
Fixed hardtop	yes
Cockpit cushions	yes
Cockpit table	yes
Cockpit chairs	yes
Bathing platform	Hydraulic
Boarding ladder	stainless steel
Deck shower	yes
Anchor	Delta 50 kg SS
Anchor chain	100m SS 12mm
Chain counter	yes
Windlass	Quick
Windlass aft	Mooring line winches electric
Deck wash	yes
Sea railing	stainless steel
Lifejackets	yes
Lifebuoy	yes
Wiper	yes
Horn	yes
Fenders	yes
Mooring lines	yes
TV	yes
Radio	2x Pandora Sound Systems
iPod connection	Bose
Surround Sound System	Bose
Cockpit speakers	yes



Speakers in salon	yes
Speakers in cabin	yes
Fire extinguisher	yes
Extinguisher in engine room	yes
Auto extinguisher system	yes





# MONTE CARLO YACHTS MCY 70



# MONTE CARLO YACHTS MCY 70





# MONTE CARLO YACHTS MCY 70



# MONTE CARLO YACHTS MCY 70





# MONTE CARLO YACHTS MCY 70





# MONTE CARLO YACHTS MCY 70



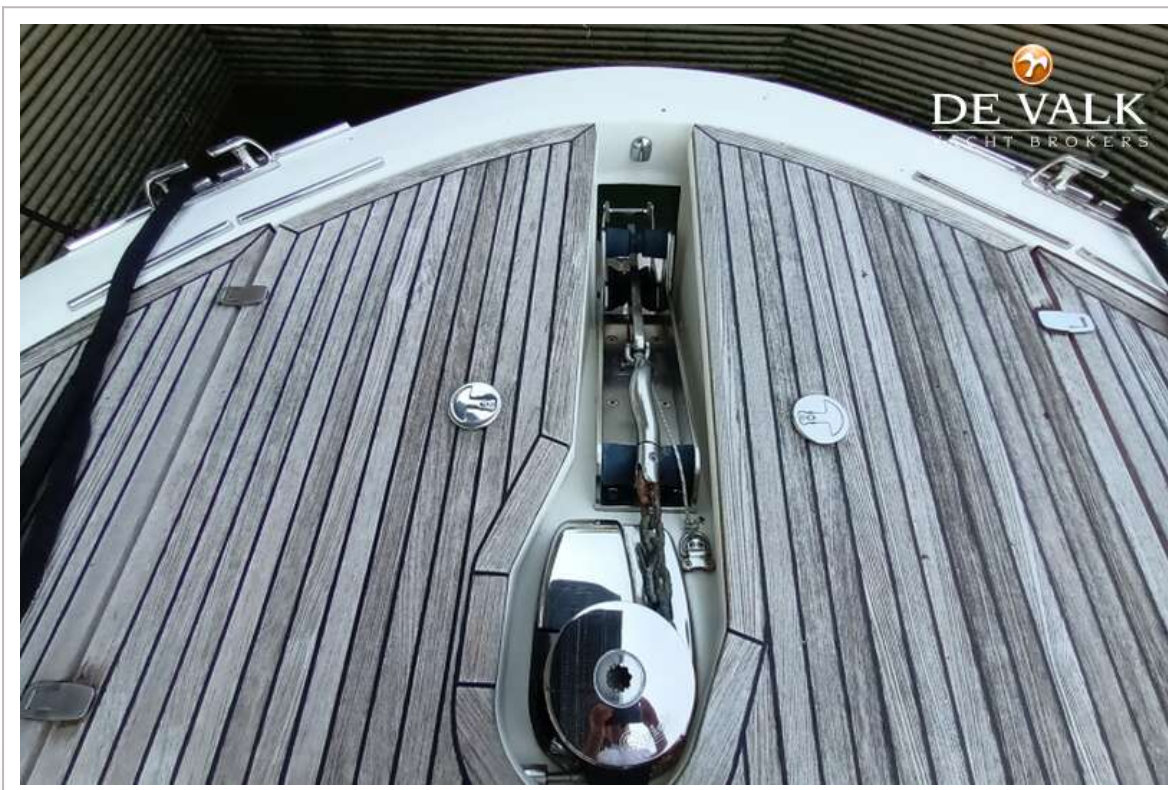


# MONTE CARLO YACHTS MCY 70





# MONTE CARLO YACHTS MCY 70





# MONTE CARLO YACHTS MCY 70



# MONTE CARLO YACHTS MCY 70





# MONTE CARLO YACHTS MCY 70



# MONTE CARLO YACHTS MCY 70

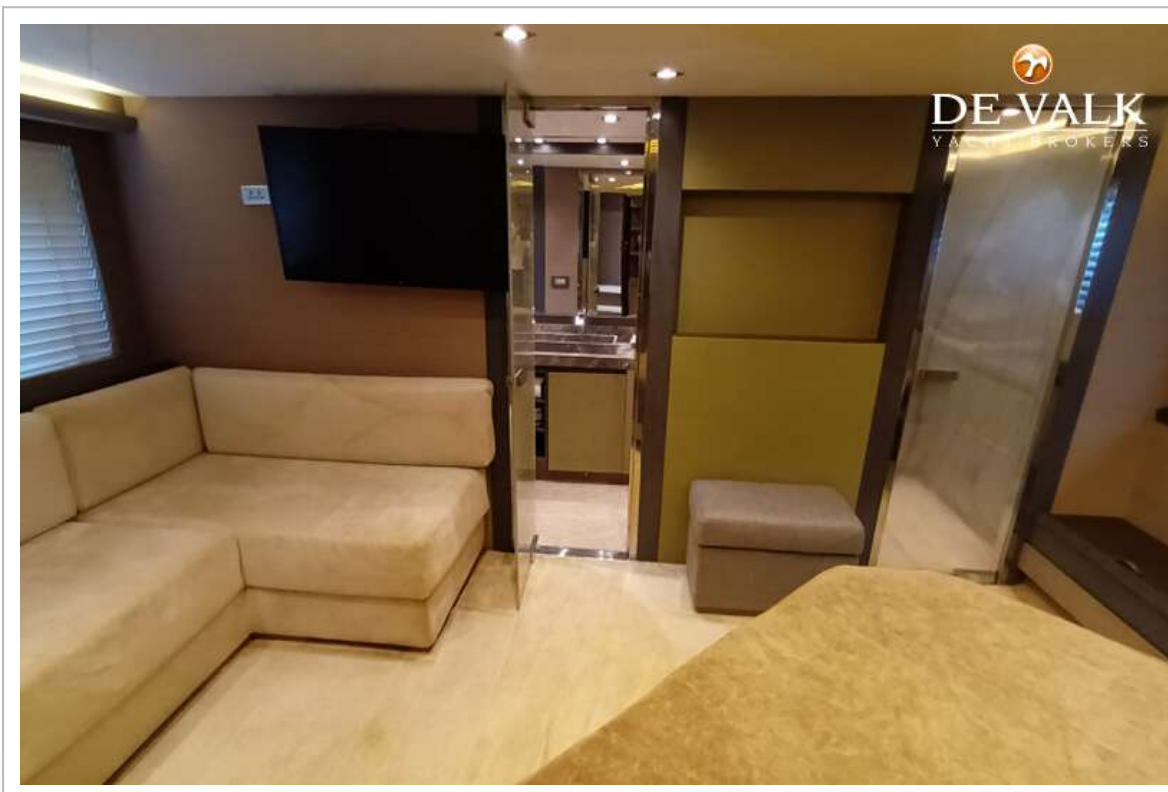




# MONTE CARLO YACHTS MCY 70

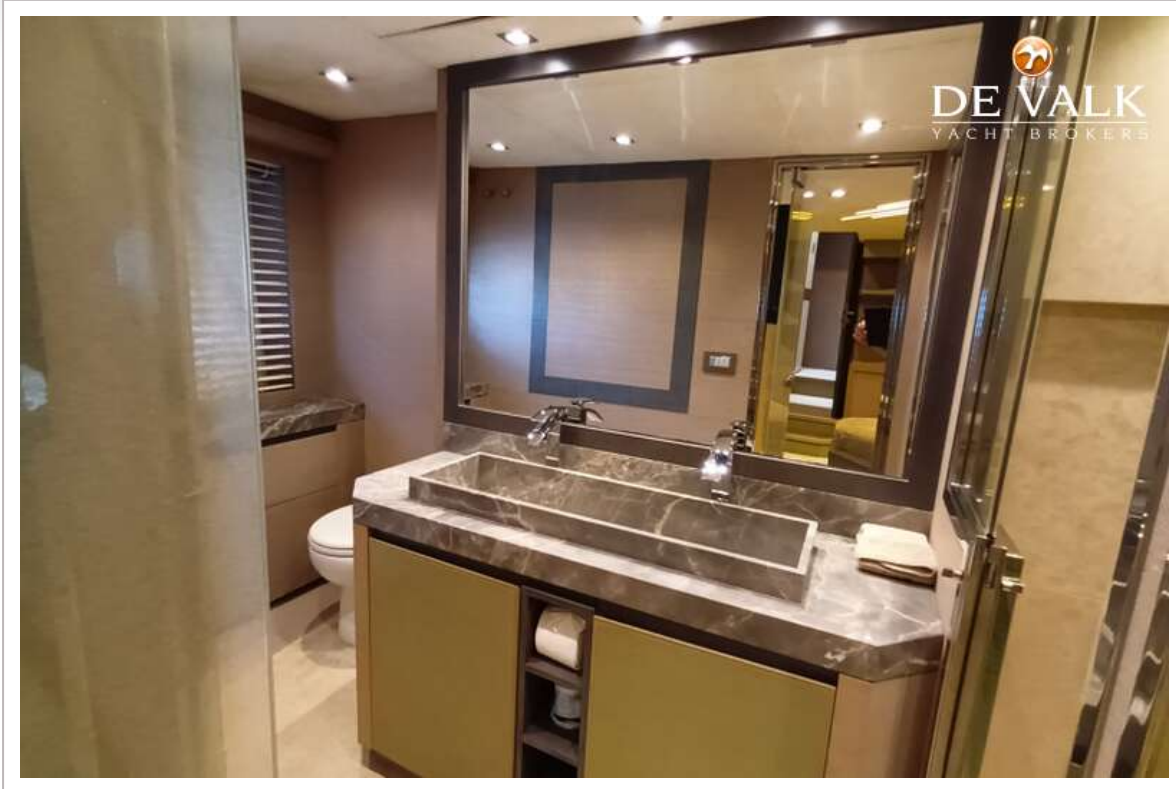


# MONTE CARLO YACHTS MCY 70





# MONTE CARLO YACHTS MCY 70



# MONTE CARLO YACHTS MCY 70

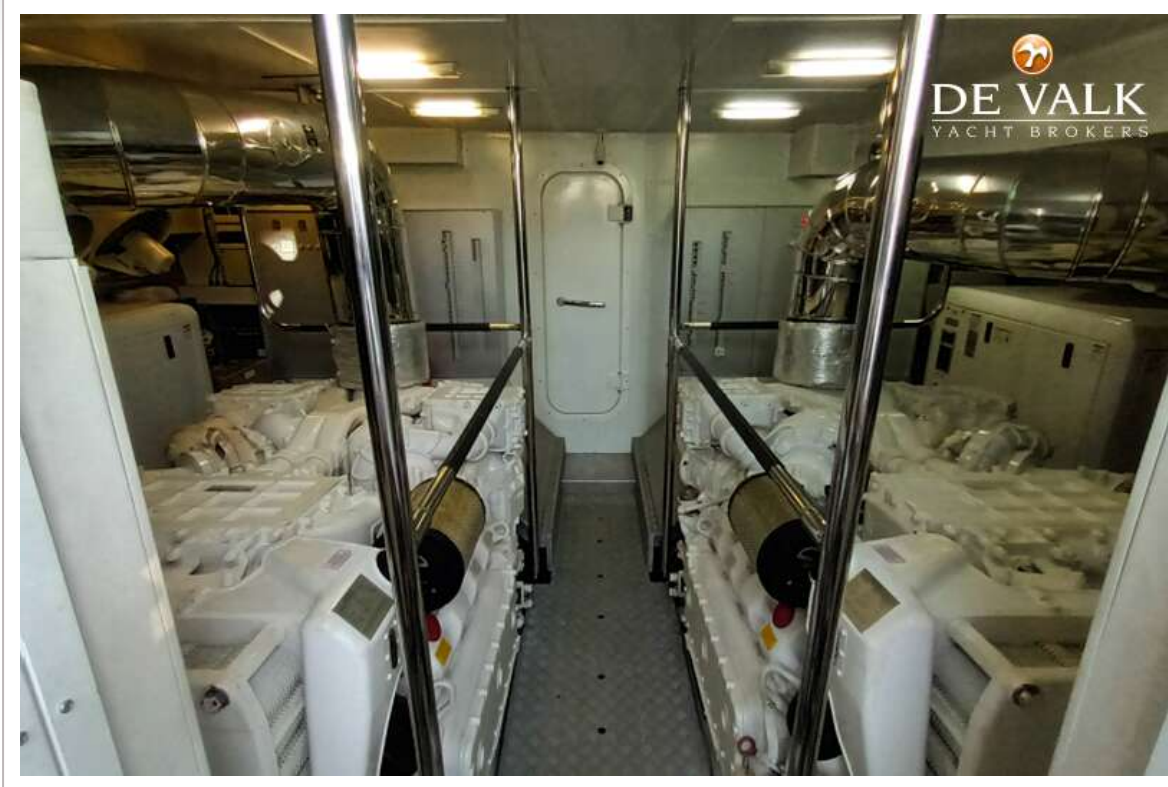




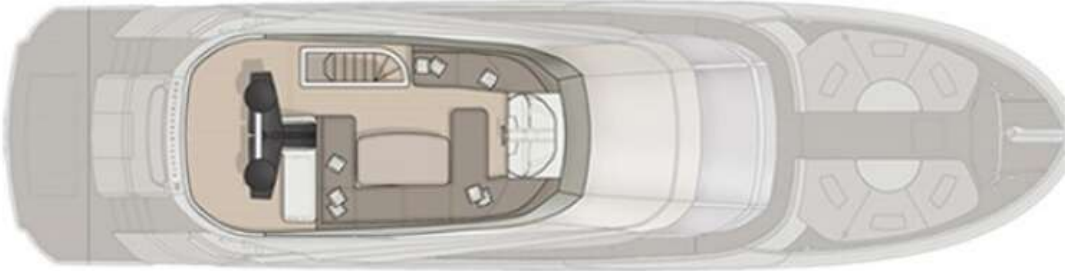
# MONTE CARLO YACHTS MCY 70



# MONTE CARLO YACHTS MCY 70



  
**DE VALK**  
YACHT BROKERS



  
**DE VALK**  
YACHT BROKERS



