



DE VALK
YACHT BROKERS



NIDELV 33 CLASSIC



DE VALK
YACHT BROKERS

NIDELV 33 CLASSIC

BROKER'S COMMENTS

The Nidelv 33 Classic 33 "Anja" was built in 2006 and has 6 sleeping places in two cabins and a folding bed in the salon. The boat is equipped with a 110 Ps Volvo Penta diesel engine, electric bow thruster. This Nidelv 33 Classic is in super condition and looks like new. She can be viewed after appointment in the Northern part of Germany 50 Km from the Dutch/German border.

Pieter Bosma

SPECIFICATIONS

Dimensions	10.40 x 3.30 x 0.92 (m)	Builder	Zaadnoordijk
Built	2006	Cabins	2
Material	GRP	Berths	6
Engine(s)	1 x Volvo Penta D3-110 diesel	Hp/Kw	110.00 (hp), 80.96 (kw)
Asking price	€ 129.000 (VAT Paid)	Lying	elsewhere / Not at sales office

CONTACT

Sales office	De Valk Sneek	Telephone	+31 515 42 80 30
Address	Zwolsmanweg 7 8606 KC Sneek The Netherlands	E-mail	sneek@devalk.nl

DISCLAIMER

These particulars are given in good faith as supplied but cannot be guaranteed.



NIDELV 33 CLASSIC

GENERAL

Model	NIDELV 33 CLASSIC
Type	motor yacht
LOA (m)	10,40
Beam (m)	3,30
Draft (m)	0,92
Air draft (m)	3,70
Air draft min (m)	2,40
Headroom (m)	1,95
Year built	2006
Builder	Zaadnoordijk
Country	The Netherlands
Designer	Vripack
Displacement (t)	7
CE norm	C
Hull material	GRP
Hull colour	off-white
Hull shape	round-bilged
Keel type	long keel
Superstructure material	GRP
Rubbing strake	rubber
Deck material	GRP
Deck finish	synthetic teak
Cockpit deck finish	synthetic teak
Dorades	yes
Window frame	aluminium
Window material	glass
Deckhatch	yes
Mast can be lowered	manual
Fuel tank (litre)	polyethylene 480 Ltr
Level indicator (fuel tank)	Wema



NIDELV 33 CLASSIC

Freshwater tank (litre)	polyethylene 225 Ltr
Level indicator (freshwater)	Wema
Blackwater tank (litre)	polyethylene 122 Ltr
Level indicator (blackwater)	Wema
Wheel steering	hydraulic
Inside helm position	yes

ACCOMMODATION

Cabins	2
Berths	6
Interior	teak
Floor	teak and holly
Open cockpit	yes
Doghouse	yes
Saloon	yes
Headroom saloon (m)	1,94 m.
Heating	diesel ducted hot air Webasto
Chart table	yes
Dinette to convert into berth	yes
Sliding door to cockpit	yes
Galley	yes
Countertop	Duropal
Sink	stainless steel
Cooker	calor gas 2 burner
Oven	yes
Fridge	Isotherm (new 2024)
Hot water system	220V + engine Boiler
Water pressure system	electrical
Owners cabin	yes
Bed length (m)	2.000 m.
Wardrobe	hanging and shelves



NIDELV 33 CLASSIC

Bathroom	shared
Toilet	yes
Toilet system	electric
Wash basin	in the bathroom
Shower	shared
Guest cabin 1	single bed
Bed length (m)	2.00 m.
Wardrobe	shelves

MACHINERY

No of engines	1
Make	Volvo Penta
Type	D3-110
HP	110
kW	80.96
Fuel	diesel
Year installed	2006
Engine cooling system	freshwater heat exchanger
Drive	shaft
Shaft seal	yes
Engine controls	bowden cable
Gearbox	hydraulic
Bowthruster	electric
Exhaust	watercooled
Thrust bearing	yes
Propeller type	fixed
Propeller blades	5
Propeller shaft material	stainless steel
Shaft lubrication	water
Manual bilge pump	yes
Electrical installation	12/240V



NIDELV 33 CLASSIC

Batteries	yes
Start battery	Optima Red Top 50 Ah (new 2024)
Service battery	1x 180 Ah
Bowthruster battery	New 2024
Solar panel	With Meter MT1
Shorepower	yes

NAVIGATION

Compass	yes
Log	yes
VHF handheld	yes
Rudder angle indicator	yes
Plotter/GPS	Raymarine
Navigation lights	yes

EQUIPMENT

Cockpit cover	New in 2022
Cockpit cushions	yes
Cockpit table	yes
Bathing platform	yes
Boarding ladder	yes
Anchor	yes
Anchor chain	yes
Windlass	electrical
Sea railing	stainless steel
Grab rail (superstructure)	stainless steel
Rope cutter	yes
Wiper	yes
Horn	electric
Fenders	yes
Mooring lines	yes



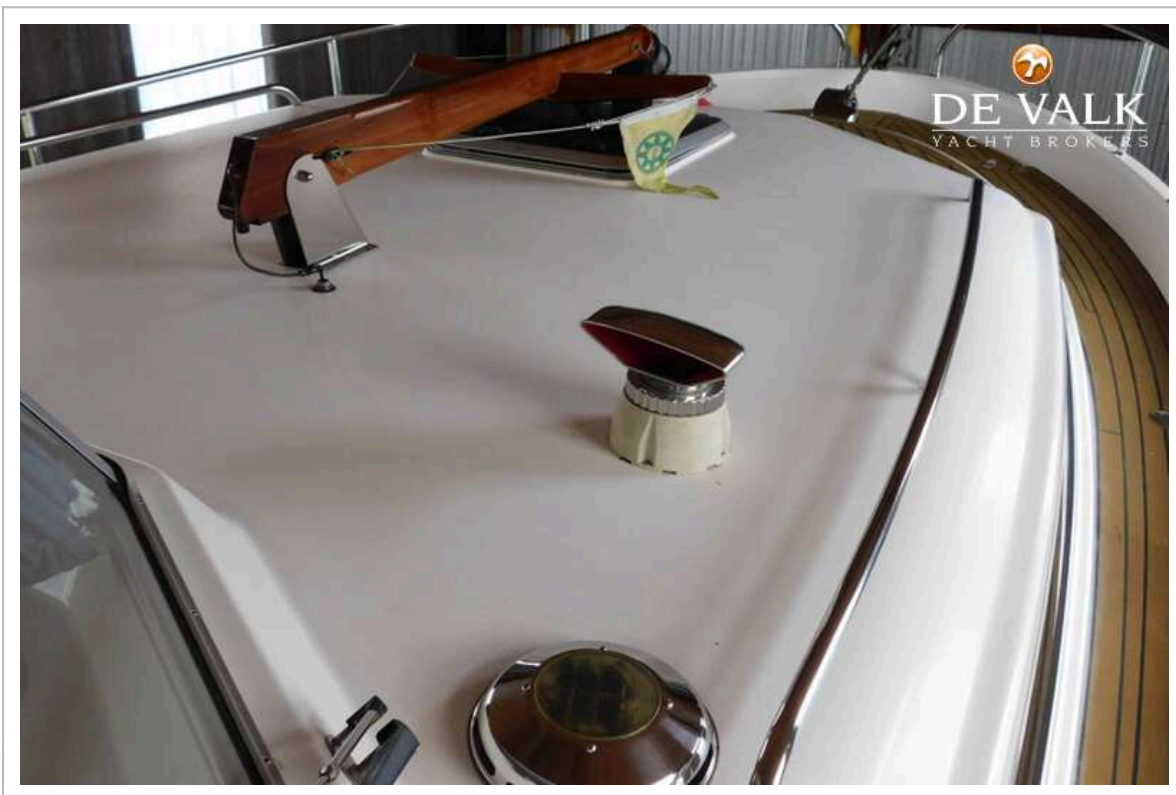
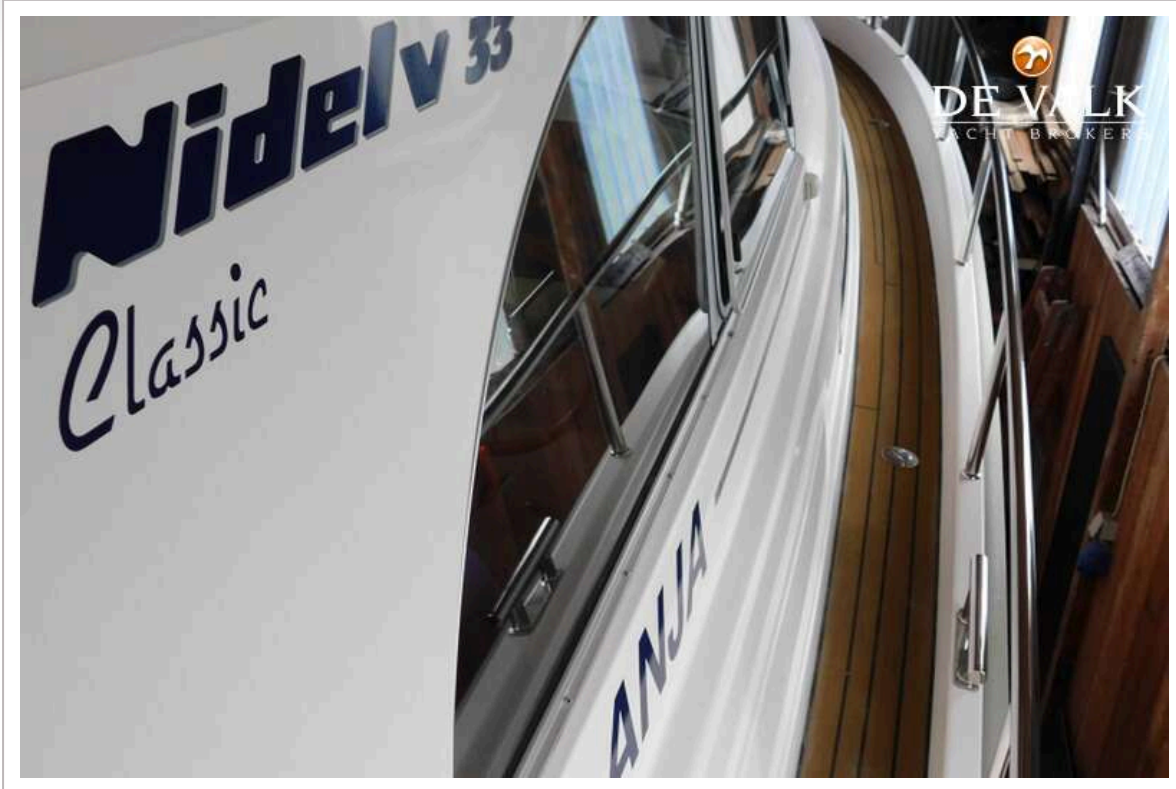
TV	yes
Fire extinguisher	yes



NIDELV 33 CLASSIC



NIDELV 33 CLASSIC



NIDELV 33 CLASSIC



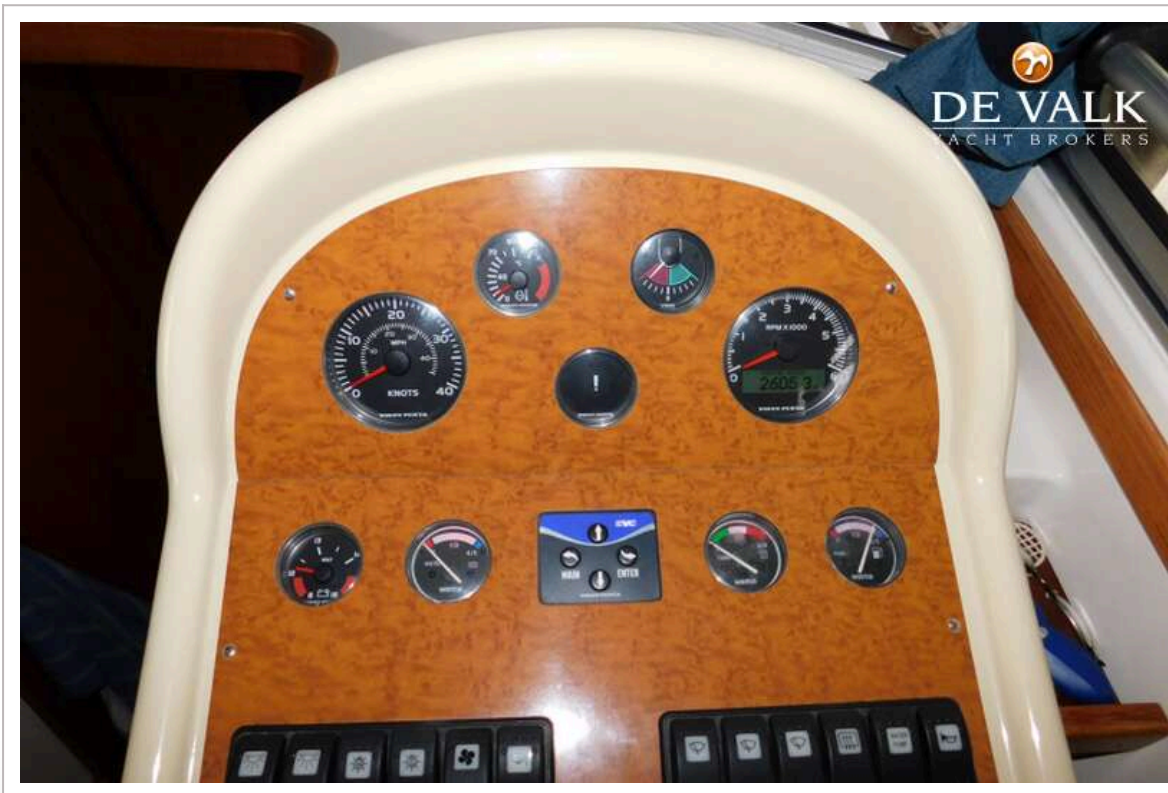
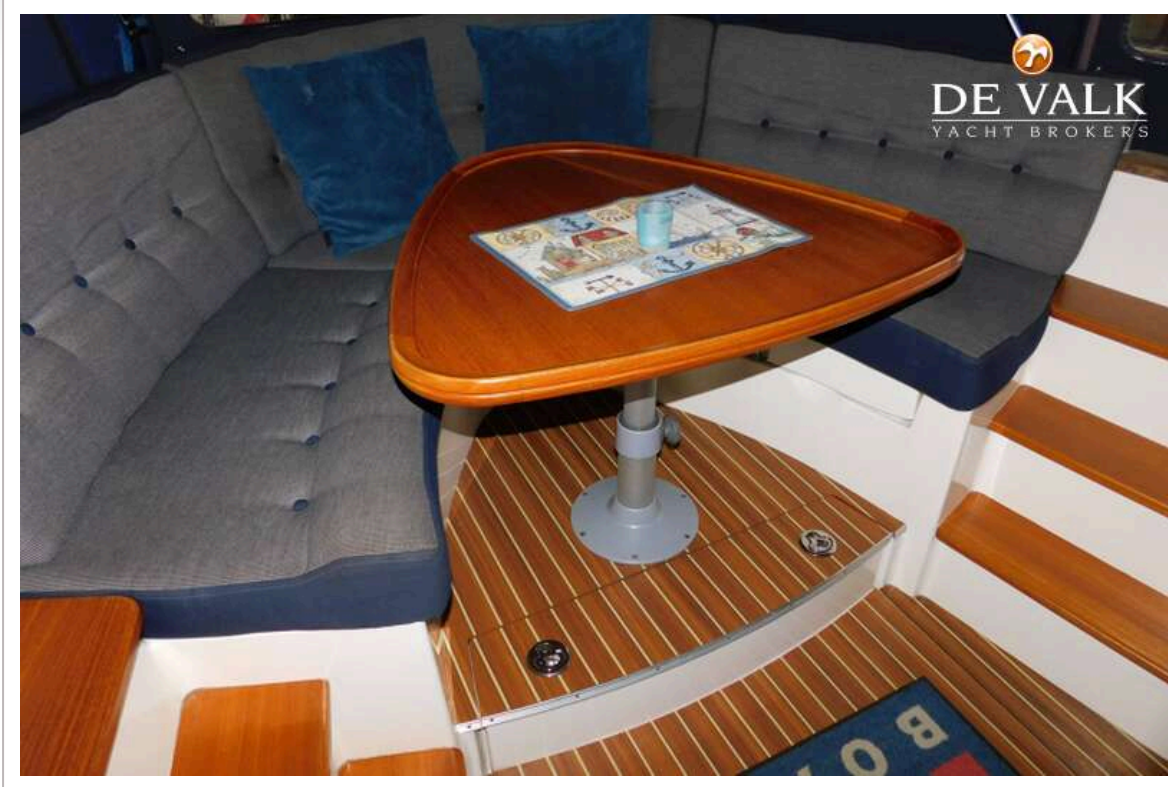
NIDELV 33 CLASSIC



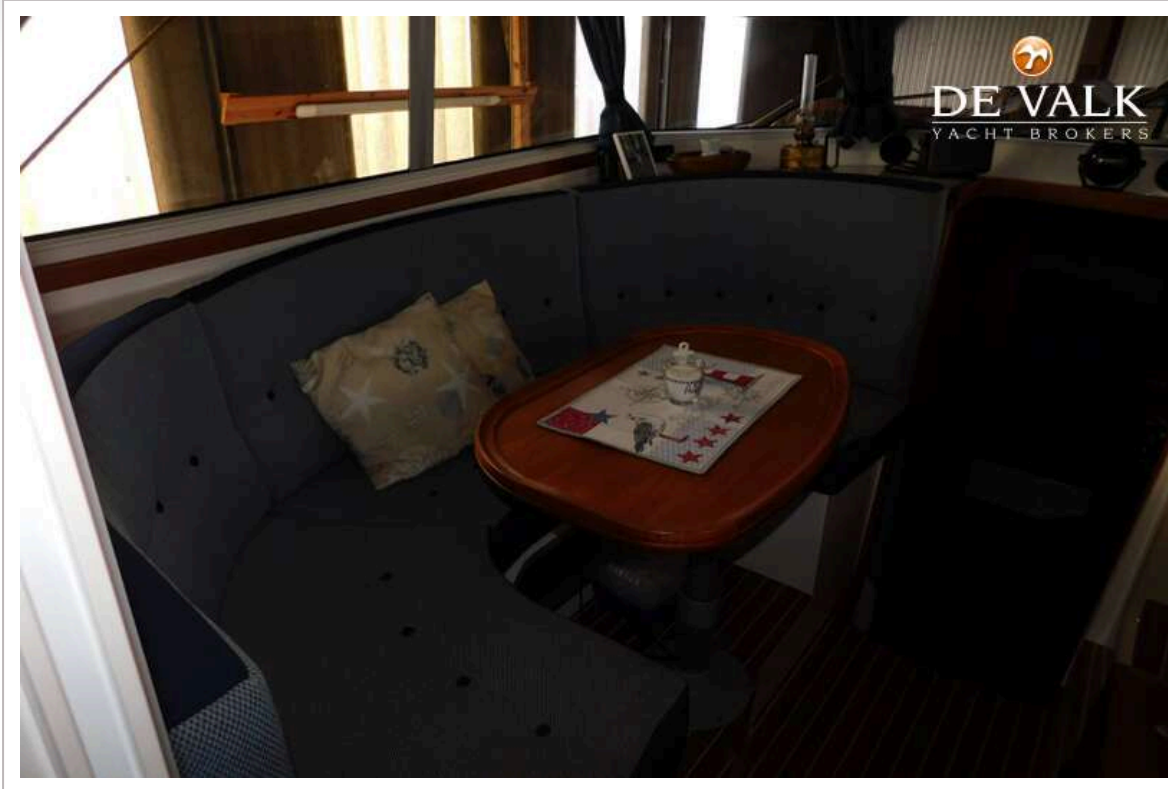
NIDELV 33 CLASSIC



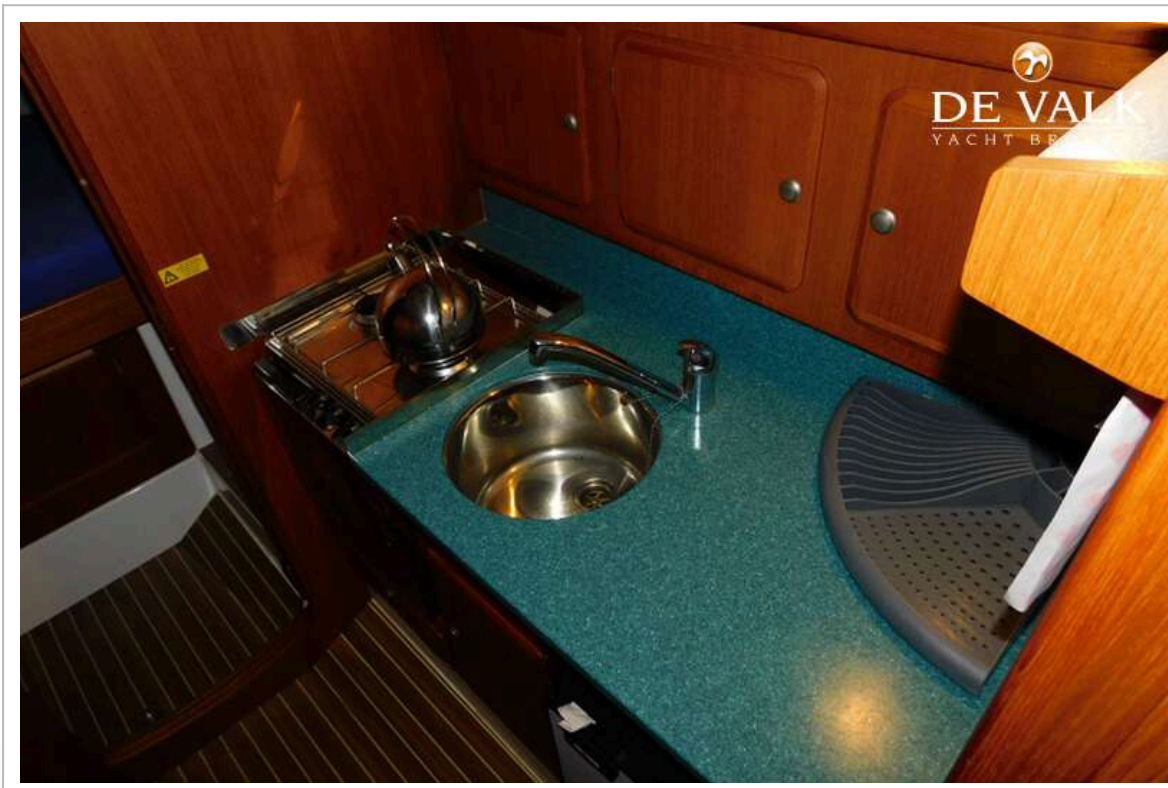
NIDELV 33 CLASSIC



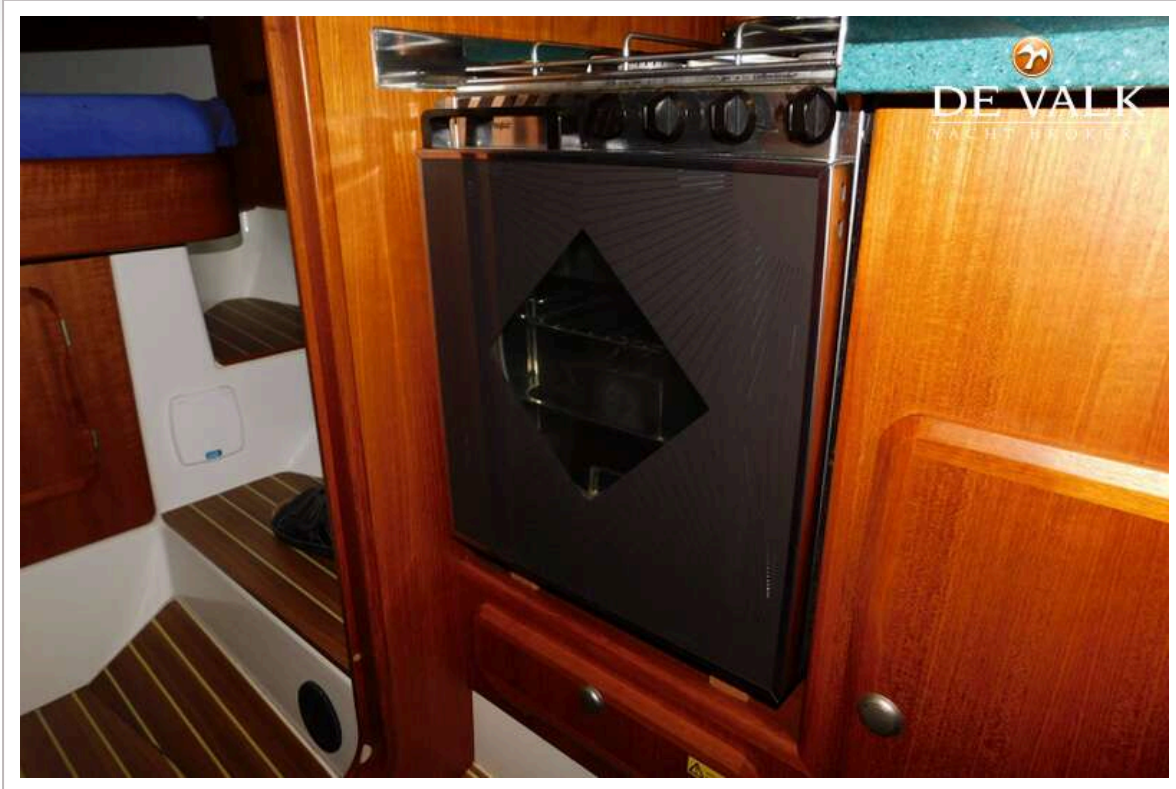
NIDELV 33 CLASSIC



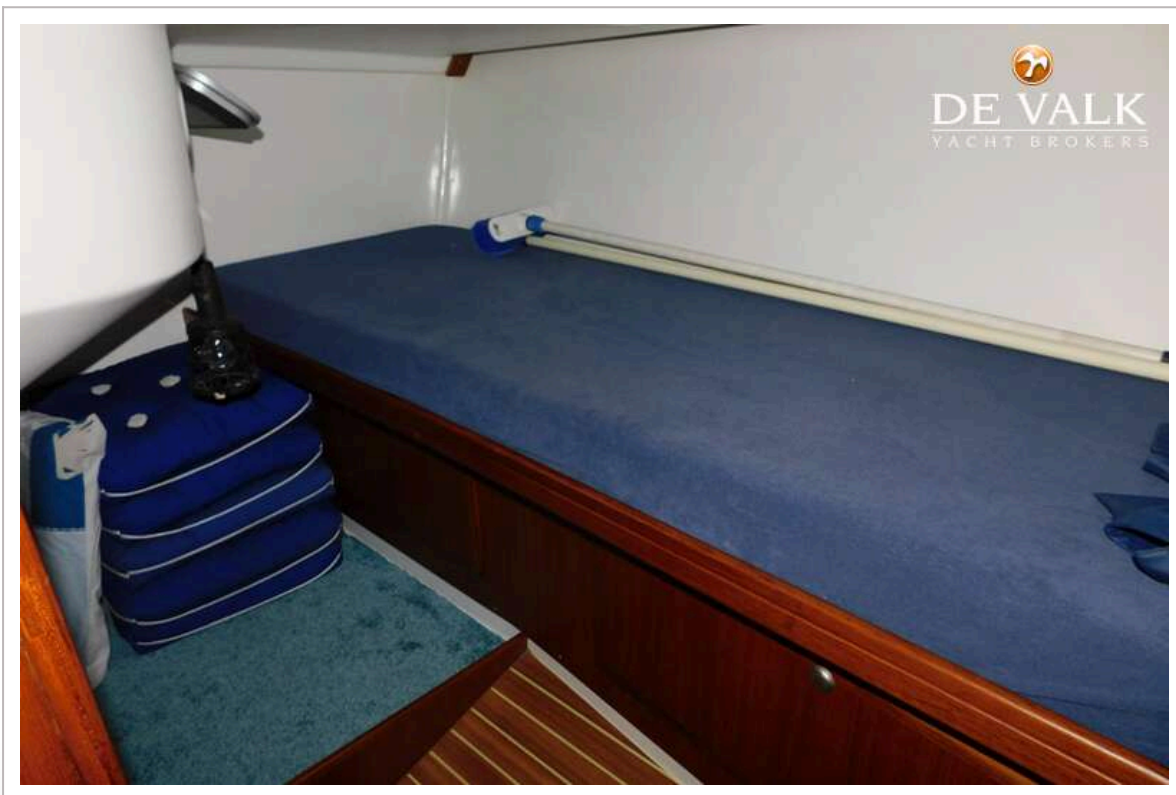
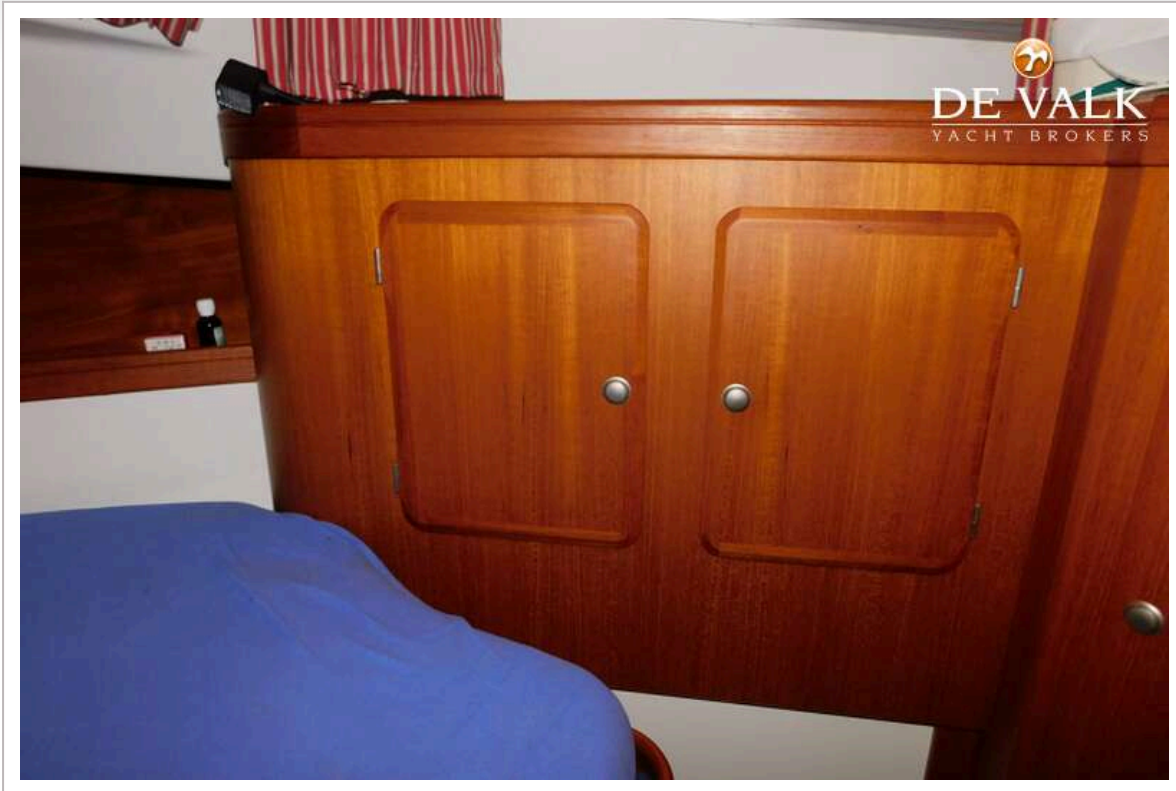
NIDELV 33 CLASSIC



NIDELV 33 CLASSIC



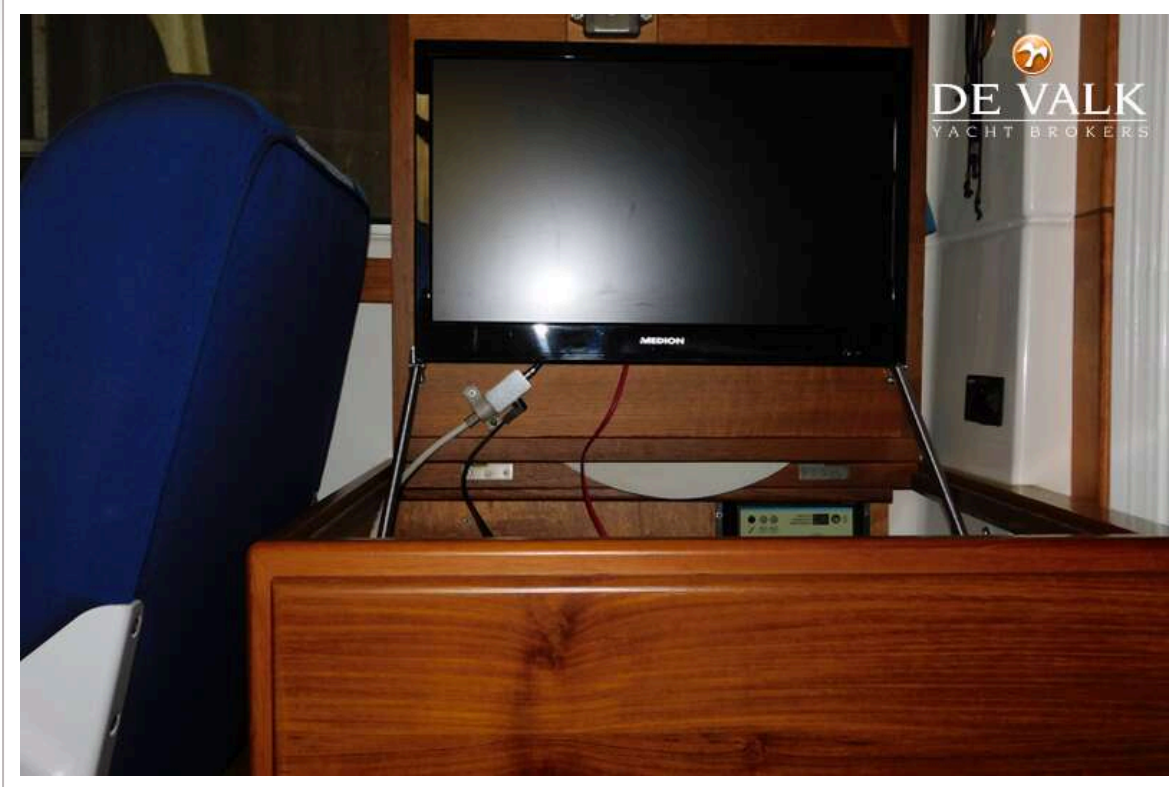
NIDELV 33 CLASSIC



NIDELV 33 CLASSIC



NIDELV 33 CLASSIC



NIDELV 33 CLASSIC

