



DE VALK
YACHT BROKERS



HALLBERG RASSY 40



DE VALK
YACHT BROKERS

HALLBERG RASSY 40

BROKER'S COMMENTS

Step aboard this immaculate 2008 Hallberg Rassy 40 true icon of quality and performance. Meticulously maintained both above and below decks, this renowned blue water cruiser features a shallow draft of only 1.70 meters, offering exceptional access to coastal and inland waters alike. With its timeless design, robust construction, and comfortable, well-appointed interior, this vessel is perfectly suited for extended cruising and leisurely adventures. Don't miss the opportunity to experience the elegance and reliability of a Hallberg Rassy 40 first hand.

Johan Nooitgedagt

SPECIFICATIONS

Dimensions	12.40 x 3.82 x 1.70 (m)	Builder	Hallberg Rassy Varvs AB
Built	2008	Cabins	2
Material	GRP	Berths	7
Engine(s)	1 x Volvo Penta D2-55E diesel	Hp/Kw	55 (hp), 40.42 (kw)
Asking price	€ 275.000 (VAT Paid)	Lying	contact Hindeloopen

CONTACT

Sales office	De Valk Hindeloopen	Telephone	+31 514 52 40 00
Address	Oosterstrand 1 8713 JS Hindeloopen The Netherlands	E-mail	hindeloopen@devalk.nl

DISCLAIMER

These particulars are given in good faith as supplied but cannot be guaranteed.



HALLBERG RASSY 40

GENERAL

Model	HALLBERG RASSY 40
Type	sailing yacht
LOA (m)	12,40
Beam (m)	3,82
Draft (m)	1,70
Air draft (m)	18,30
Headroom (m)	1,95
Year built	2008
Builder	Hallberg Rassy Varvs AB
Country	Sweden
Designer	Germán Frers
Displacement (t)	10
Ballast (tonnes)	4,1
CE norm	A
Hull material	GRP
Hull colour	white
Hull shape	round-bilged
Keel type	fin keel with bulb
Superstructure material	GRP
Rubbing strake	stainless steel
Deck material	GRP
Deck finish	teak
Superstructure deck finish	teak
Cockpit deck finish	teak
Antifouling (year)	2025
Dorades	2x
Window frame	aluminium Lewmar
Deckhatch	4x Lewmar
Fuel tank (litre)	stainless steel 240
Fuel tank 2 (litre)	220



HALLBERG RASSY 40

Level indicator (fuel tank)	yes
Freshwater tank (litre)	stainless steel 460
Level indicator (freshwater)	yes
Blackwater tank (litre)	stainless steel 80
Blackwater tank extraction	deck extraction + uw line
Wheel steering	mechanical Lewmar
Emergency tiller	yes

ACCOMMODATION

Cabins	2
Berths	7
Interior	mahogany
Floor	teak and holly
Saloon	yes
Headroom saloon (m)	1,92
Heating	diesel ducted hot air Webasto 3,5kw airtop
Chart table	yes
Aft Cabin	1x
Galley	yes
Countertop	Duropal
Sink	stainless steel 2x
Cooker	calor gas ENO 2 burner
Oven	In cooker
Fridge	Isotherm
Freezer	Isotherm
Hot water system	220V + engine
Water pressure system	electrical
Manual and/or foot pump	yes
Owners cabin	double bed + single bed
Bed length (m)	2
Wardrobe	hanging/drawers/shelves



HALLBERG RASSY 40

Guest cabin 1	v-bed
Bed length (m)	2,05
Wardrobe	hanging and drawers
Bathroom	shared
Toilet	yes
Toilet system	yes
Wash basin	in the bathroom
Shower	yes

MACHINERY

No of engines	1
Make	Volvo Penta
Type	D2-55E
HP	55
kW	40.42
Fuel	diesel
Year installed	2008
Maximum speed (kn)	8,3
Cruising speed (kn)	7,0
Consumption (l/hr)	2,5
Engine hours	2668,01
Engine cooling system	freshwater heat exchanger
Drive	shaft
Engine controls	bowden cable
Gearbox	mechanical
Bowthruster	electric 8pk Sleipner
Exhaust	watercooled
Thrust bearing	yes
Propeller type	folding Flexofold
Propeller blades	3 blades
Propeller shaft material	stainless steel



HALLBERG RASSY 40

Shaft lubrication	water
Manual bilge pump	yes
Electric bilge pump	yes
Electrical installation	12 / 220 Volt
Batteries	yes
Start battery	2024 100ah
Service battery	Domestic circuit 2x 285 Ah (4x6V arranged in two banks)
Battery monitor	Mastervolt
Battery charger/inverter	Matervolt Combi 12/2000 - 100
Solar panel	yes
Shorepower	with cable

NAVIGATION

Compass	Silva 125
Multi control display	Furuno RD-30 on steering pedestal
Depth sounder	Raymarine ST60+ Depth
Log	Raymarine ST60+ Speed
Windset	Raymarine ST60+ Wind
VHF	ICOM HM-195B Command Mic
VHF handheld	Simrad HT50
Autopilot	Raymarine ST7002, with extra remote
Rudder angle indicator	On autopilot
Radar	Furuno
GPS	Furuno GP-32 gps Navigator
Radar/plotter	Furuno Navnet VX2 C-map, inside
Radar/GPS/plotter	2019 Raymarine ES12 Hybrid Touch, outside
Navtex	Furuno NX-300 Navtex
AIS transceiver	yes
Extra info	Raymarine remote Autopilot

EQUIPMENT



HALLBERG RASSY 40

Fixed windscreen	yes
Sprayhood	2024 Original Rassy grey
Cockpit cover	2024 Original Rassy grey
Cockpit table	yes
Bathing platform	yes
Boarding ladder	stainless steel
Deck shower	yes
Anchor	Delta
Anchor chain	Stainless steel 60mtr
Anchor 2	Bruce
Windlass	electrical Lewmar
Dinghy	inflatable
Outboard	2006 Suzuki 2.5hp
Outboard support	yes
Sea railing	yes
Grab rail (superstructure)	teak
Railing side opening gates	yes
Pushpit	yes
Pulpit	yes
Lifebuoy	yes
Safety lines on deck	yes
Rope cutter	yes
Horn	air pressure
Radar reflector	Sea-Me
Fenders	yes
Mooring lines	yes
Radio	yes
Speakers in salon	Bose
Clock - barometer	Wempe
Fire extinguisher	yes
Latest extinguisher survey	must be inspected
Extra info	safe



RIGGING

Rigging	fractional with backstays
Standing rigging	wire
Brand mast	Seldén
Material mast	aluminium
Spreaders	3
Mainsail	2018 Elvstrom Hydranet radial 393
Stoway mast	yes
Cutterstay	yes
Jib	yes
Genoa	2018 Elvstrom
Genoa furler	Furlex 300S
Gennaker	90 m ²
Stormjib	13,6 m ²
Reefing System	main in-mast furling
Backstay adjuster	Seldén
Boomvang	gasspring
Primary sheet winch	2x Lewmar 30ST
Genoa sheetwinches	2x Lewmar 50ST
Spi-pole	aluminium On mast



HALLBERG RASSY 40



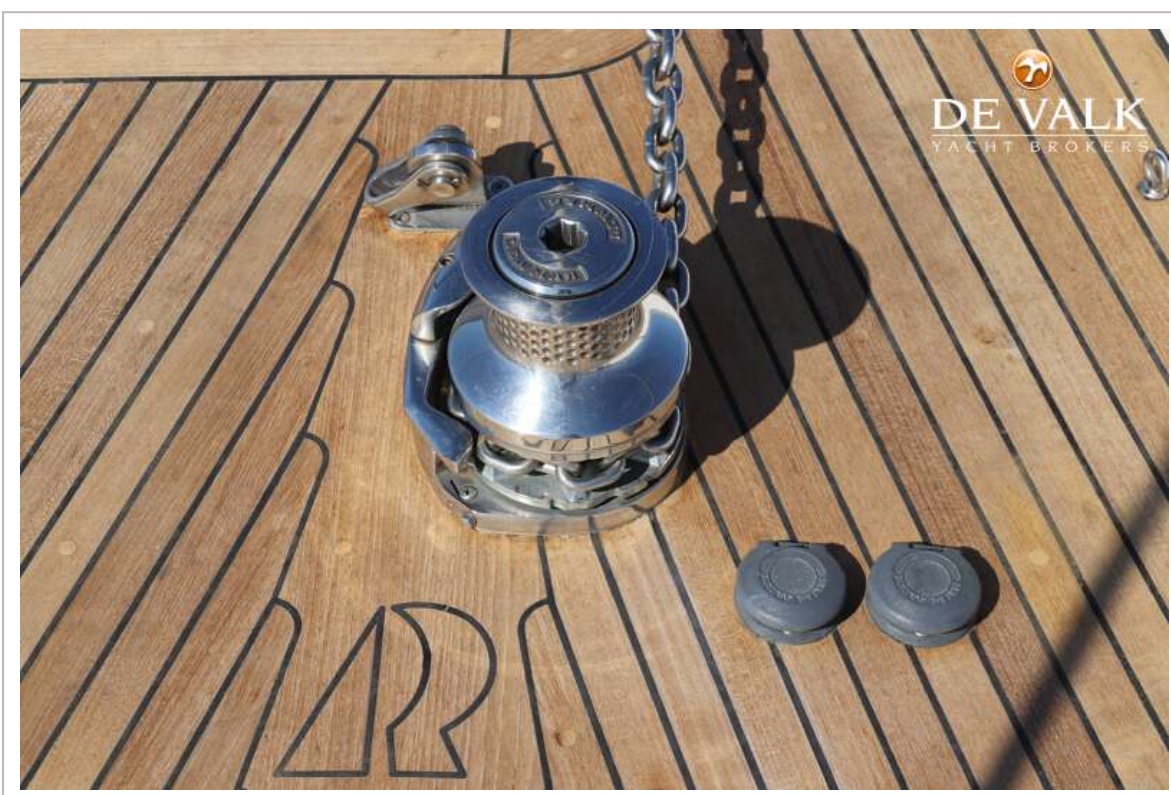
HALLBERG RASSY 40



HALLBERG RASSY 40



HALBERG RASSY 40



HALLBERG RASSY 40



HALLBERG RASSY 40



HALLBERG RASSY 40



HALLBERG RASSY 40



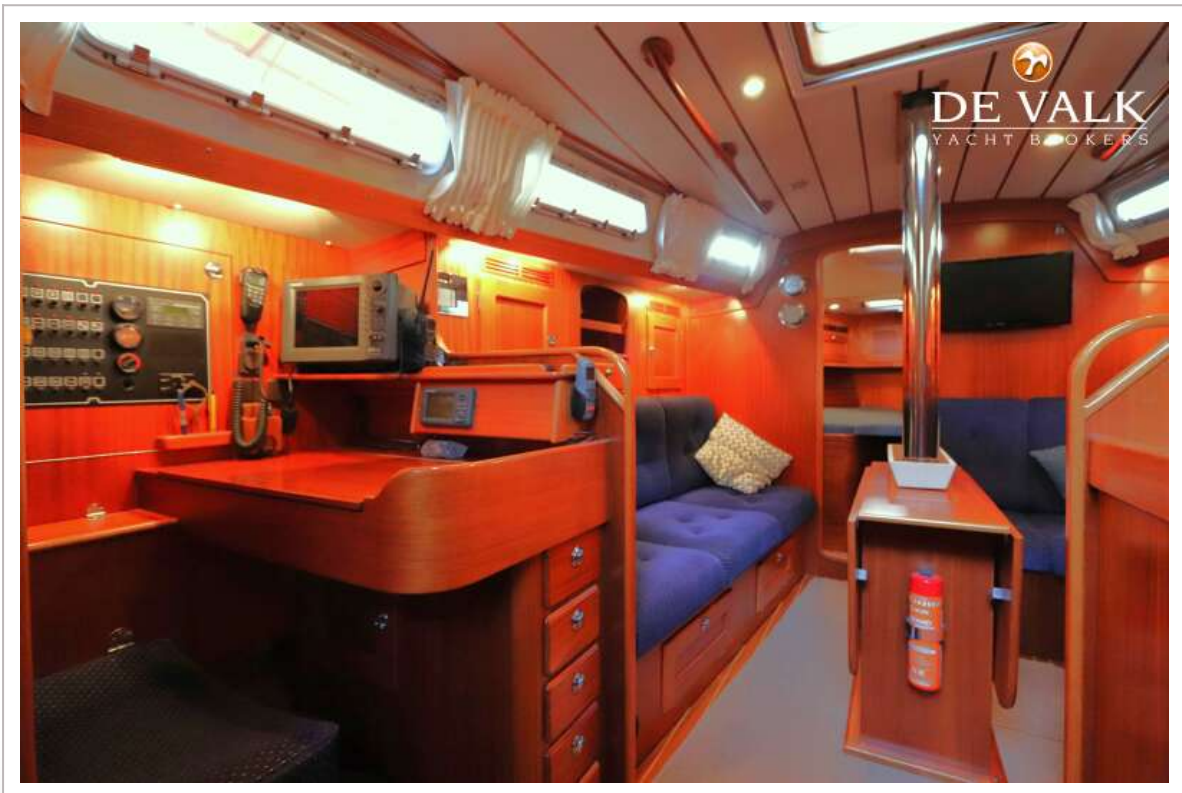
HALLBERG RASSY 40



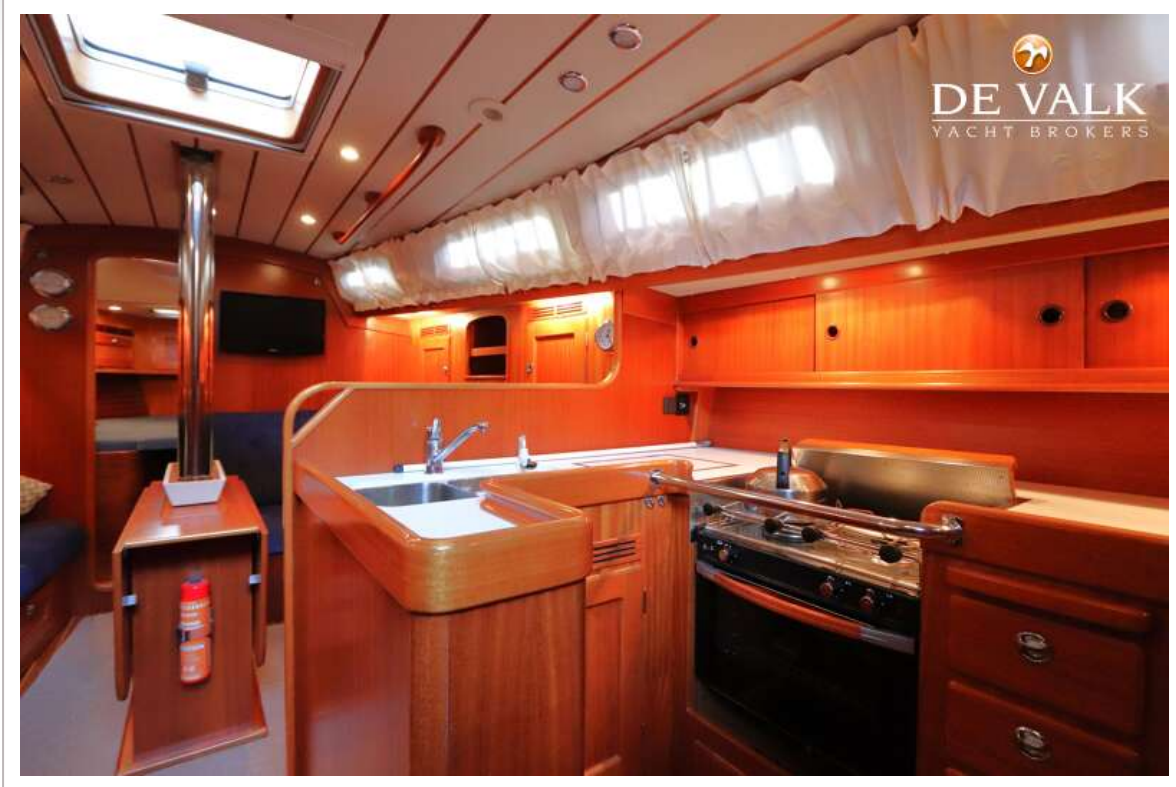
HALLBERG RASSY 40



HALLBERG RASSY 40



HALLBERG RASSY 40



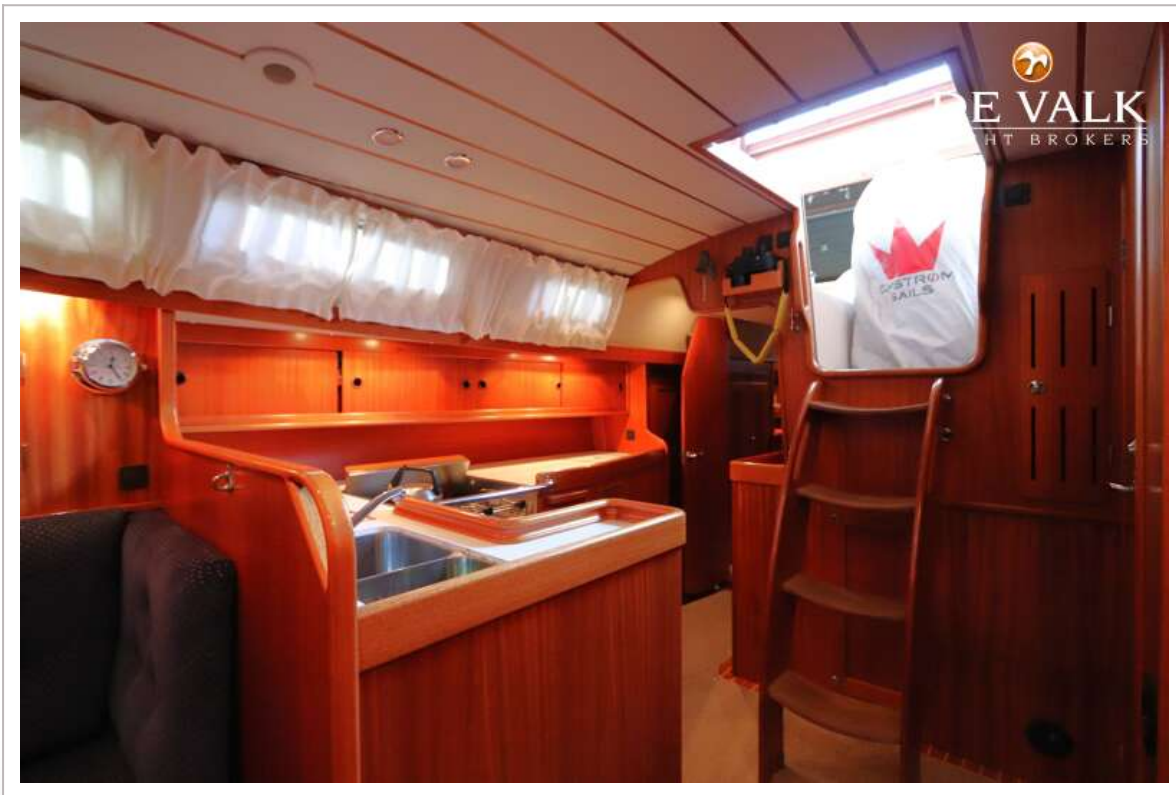
HALLBERG RASSY 40



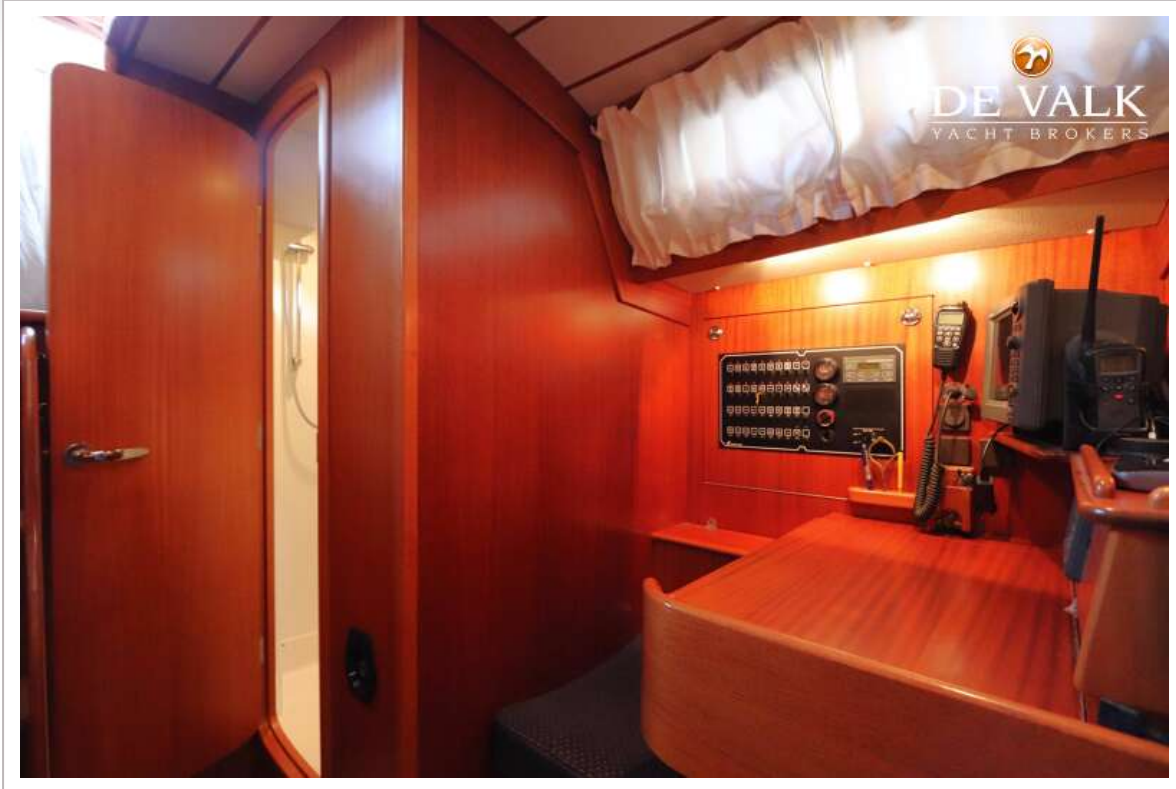
HALLBERG RASSY 40



HALLBERG RASSY 40



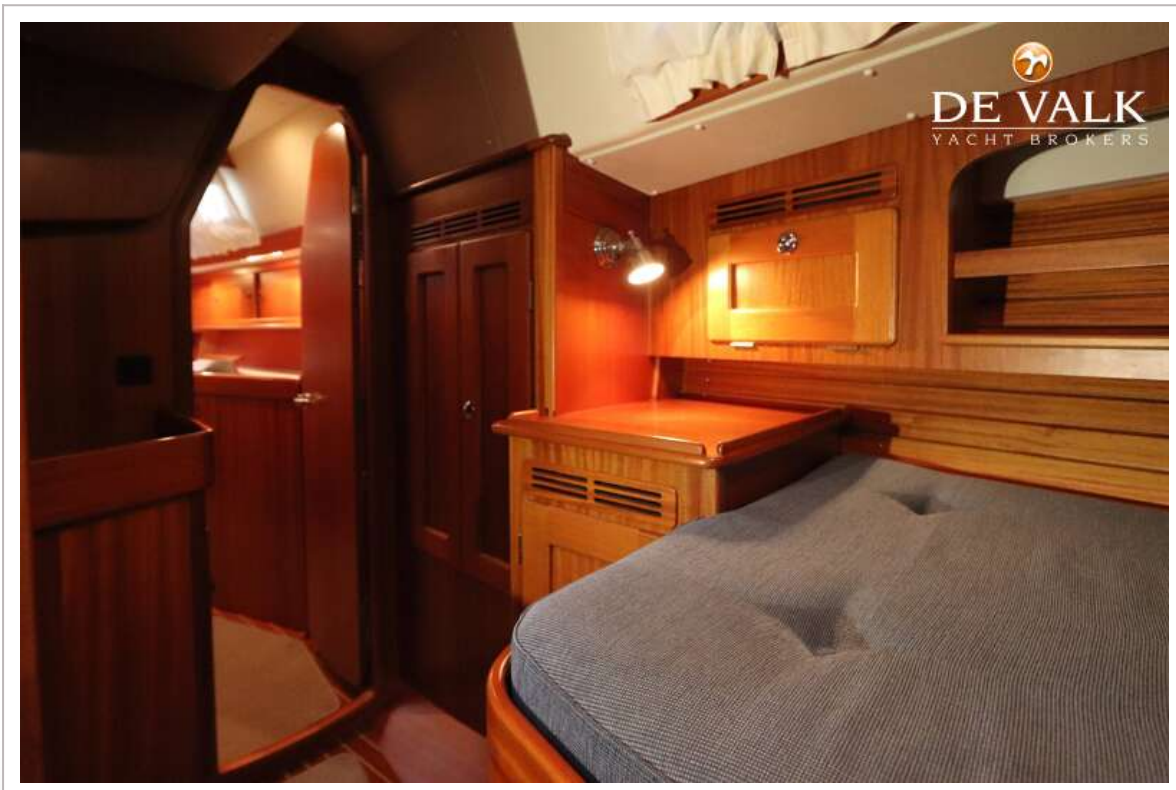
HALLBERG RASSY 40



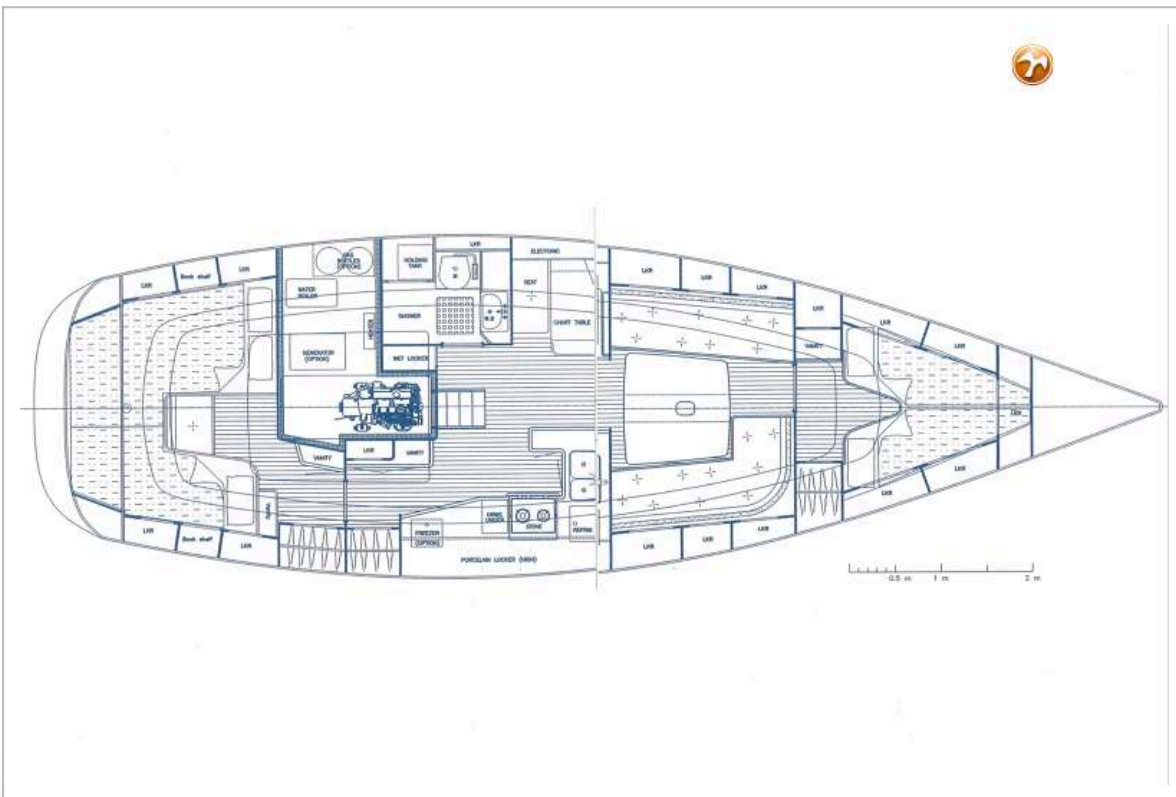
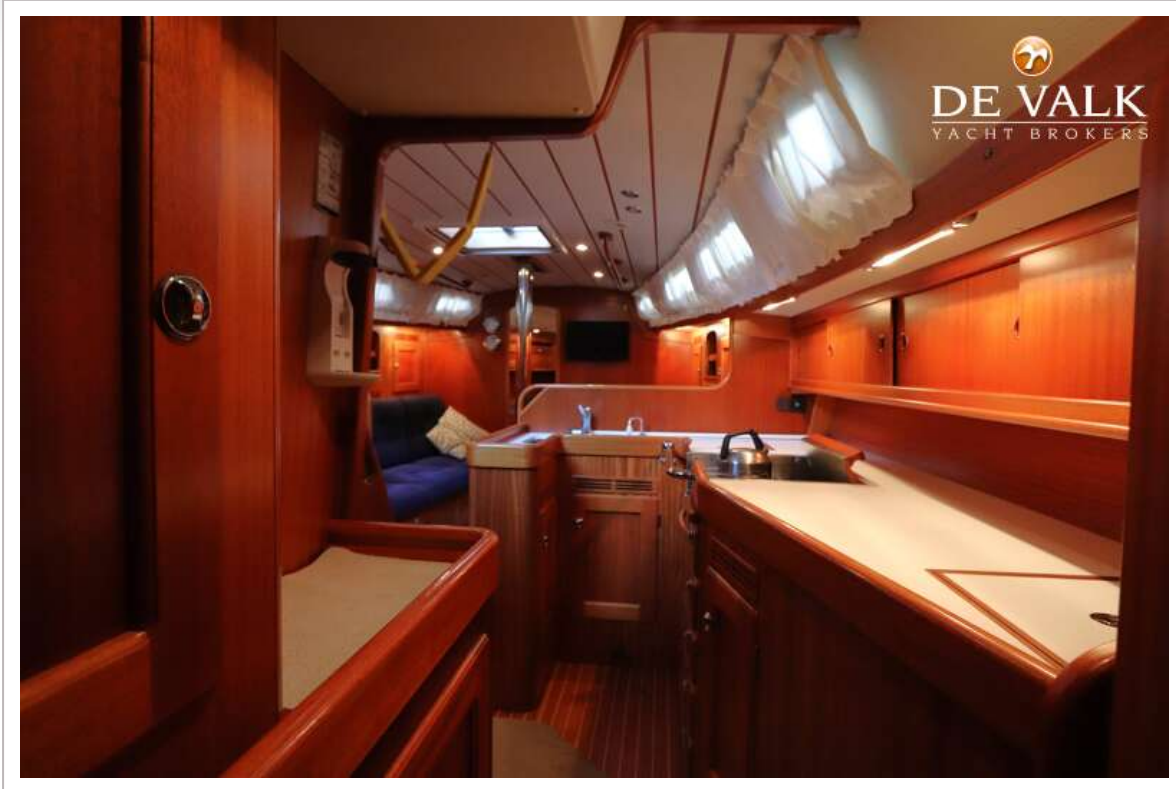
HALLBERG RASSY 40



HALLBERG RASSY 40



HALLBERG RASSY 40



HALBERG RASSY 40

