



BULK CARGO SHIP 68 M

BULK CARGO SHIP 68 M

BROKER'S COMMENTS

General Cargo Ship active and in excellent condition after a full refit done in 2015. The ship operates in the Aegean.

Sofia Iliia-Salvanou

SPECIFICATIONS

Dimensions	68.35 x 0.00 x 2,83 / 10.53 (m)	Builder	Ship yard in Hamburg
Built	1966	Cabins	
Material	Steel	Berths	
Engine(s)	1 x DEUTZ RBV6 M545 diesel	Hp/Kw	750.00 (hp), 552.00 (kw)
Asking price	€ 490.000 (VAT Not paid)	Lying	elsewhere / Not at sales office

CONTACT

Sales office	De Valk Corfu	Telephone	(+30) 266 111 8095
Address	New Port of Corfu, near Gouvia Marina 490 83 Corfu Greece	E-mail	corfu@devalk.nl

DISCLAIMER

These particulars are given in good faith as supplied but cannot be guaranteed.



BULK CARGO SHIP 68 M

GENERAL

Model	BULK CARGO SHIP 68 M
Type	motor yacht
LOA (m)	68,35
Draft (m)	10,53
Draft min (m)	2,83
Year built	1966
Builder	Ship yard in Hamburg
Country	Germany
Gross tonnage	497,95
Net tonnage	359,2
Hull material	steel
Hull thickness (mm)	Double hull
Superstructure material	steel
Deck material	steel
Fuel tank (litre)	yes
Level indicator (fuel tank)	yes
Freshwater tank (litre)	yes
Level indicator (freshwater)	yes
Wheel steering	yes
Extra info	Cargo capacity: 1500 T

ACCOMMODATION

Crew cabin	yes
Crew berths	yes
Navigation center	yes
Galley	yes

MACHINERY

No of engines	1
---------------	---

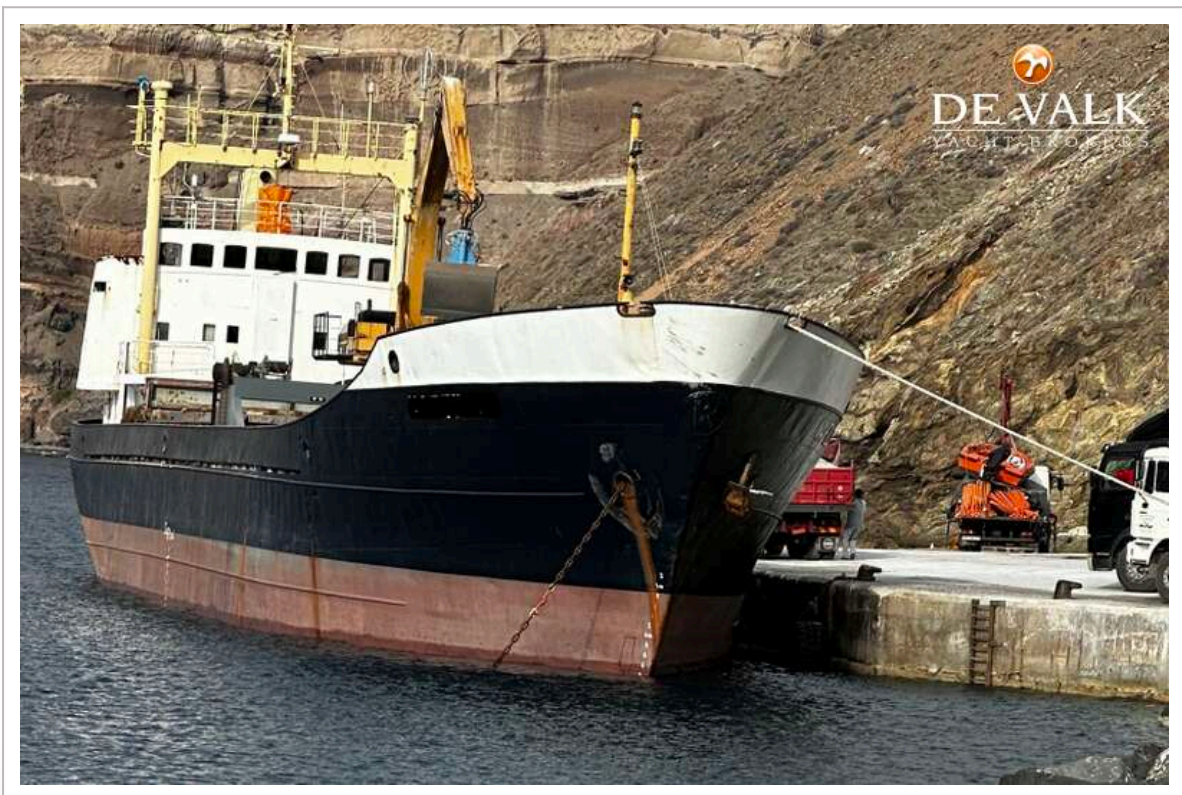


BULK CARGO SHIP 68 M

Make	DEUTZ
Type	RBV6 M545
HP	750
kW	552
Fuel	diesel
Maximum speed (kn)	12
Cruising speed (kn)	10
Consumption (l/hr)	110
Drive	shaft



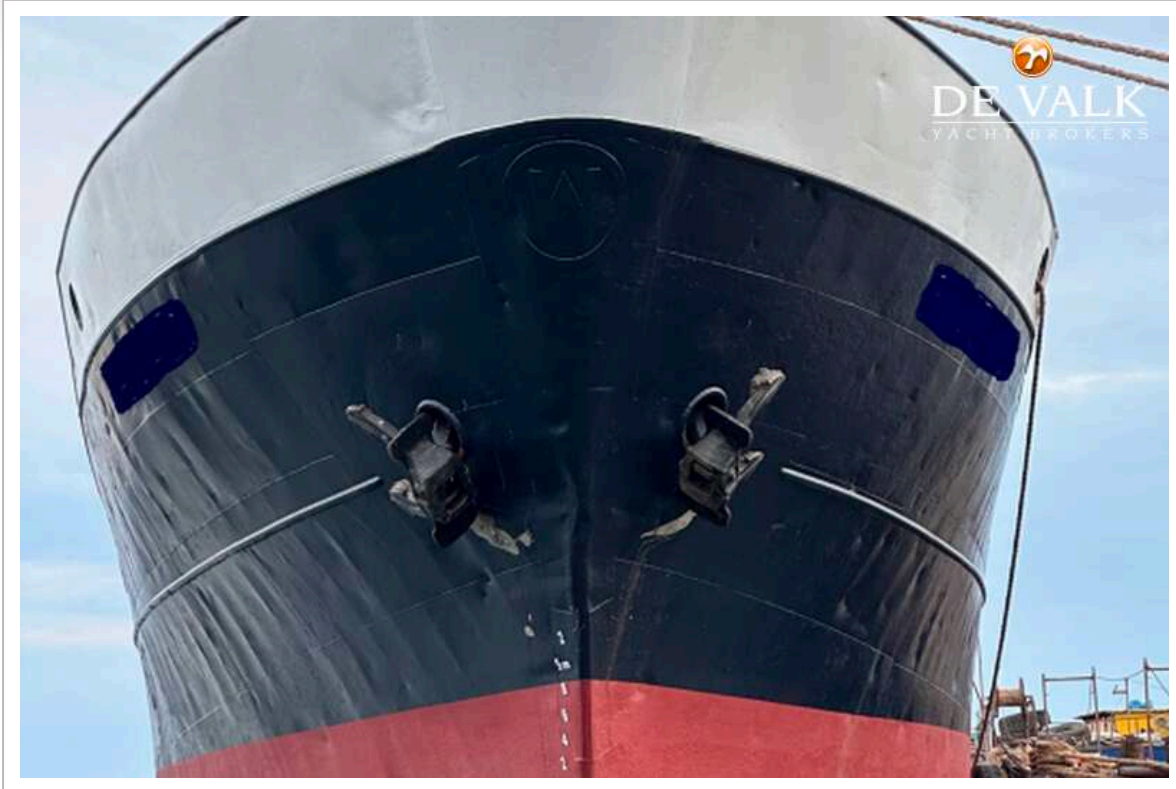
BULK CARGO SHIP 68 M



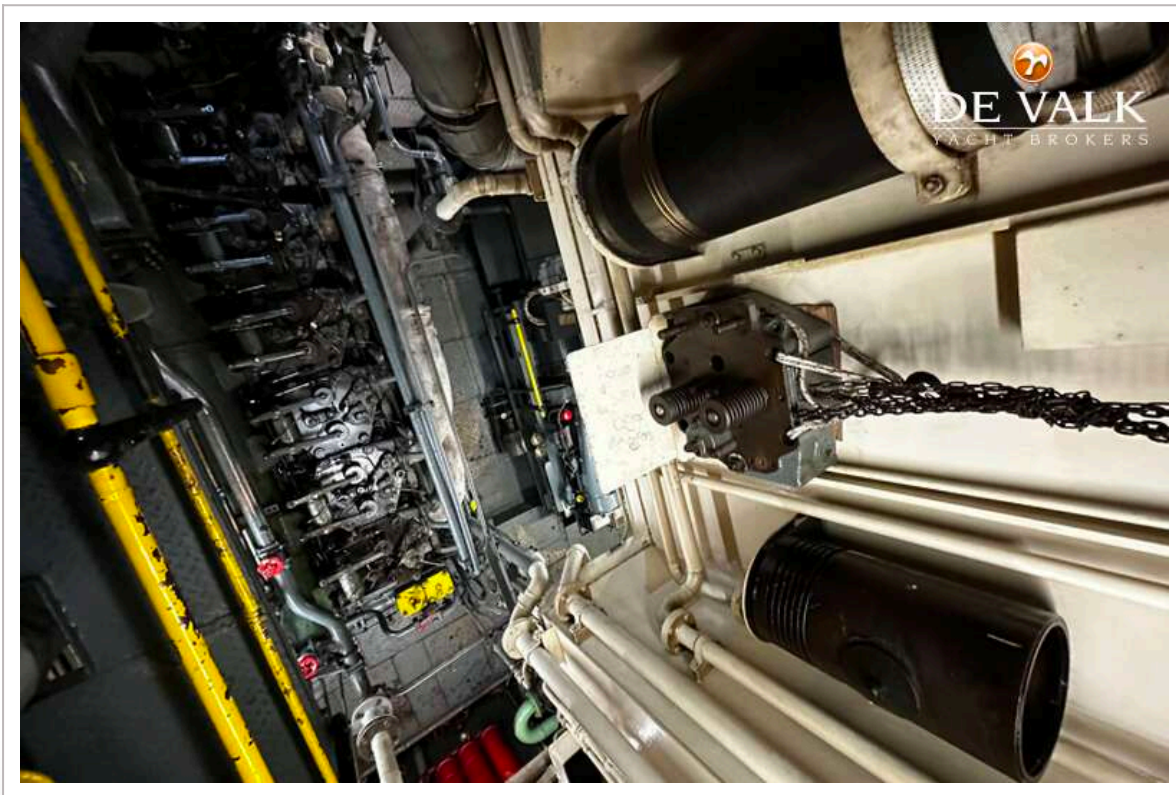
BULK CARGO SHIP 68 M



BULK CARGO SHIP 68 M



BULK CARGO SHIP 68 M



BULK CARGO SHIP 68 M



BULK CARGO SHIP 68 M



BULK CARGO SHIP 68 M

