



HANSE 415



DE VALK
YACHT BROKERS

HANSE 415

BROKER'S COMMENTS

This well-maintained Hanse 415 is being sold by its first owner and is in very good condition. Extensive B&G navigation equipment, new jib and mainsail in 2020, retractable bow thruster and much more. It offers very good comfort and is the perfect cruiser for the whole family

Filip Mimica

SPECIFICATIONS

Dimensions	12.40 x 4.17 x 2.10 (m)	Builder	Hanse
Built	2014	Cabins	3
Material	GRP	Berths	6
Engine(s)	1 x Volvo-Penta D2-55 diesel	Hp/Kw	55.00 (hp), 40.48 (kw)
Asking price	Under Offer (VAT)	Lying	Croatia

CONTACT

Sales office	De Valk Dalmatia	Telephone	+385 (0)218 68003
Address	Ul. Velimira Skorpika 22000 Sibenik Croatia	E-mail	dalmatia@devalk.nl

DISCLAIMER

These particulars are given in good faith as supplied but cannot be guaranteed.



GENERAL

Model	HANSE 415
Type	sailing yacht
LOA (m)	12,40
Beam (m)	4,17
Draft (m)	2,10
Year built	2014
Launched	2015
Builder	Hanse
Country	Germany
Designer	Michael Schmitt
Displacement (t)	8,9
Ballast (tonnes)	2,9
CE norm	A
Hull material	GRP
Hull colour	white
Keel type	T-Keel
Superstructure material	GRP
Deck material	GRP
Cockpit deck finish	teak
Deckhatch	Salon & Bow-Cabin
Portholes	yes
Fuel tank (litre)	160
Level indicator (fuel tank)	yes
Freshwater tank (litre)	320 +200
Level indicator (freshwater)	yes
Blackwater tank (litre)	2 x 35
Wheel steering	hydraulic
Extra info	fly screens for portholes and deck hatches
Extra info	The yacht has been chartered for 5 years and is now privately owned by the first owner



ACCOMMODATION

Cabins	3
Berths	6
Interior	American Cherry satin
Layout	Bow cabin, salon, 2 x aft cabin, 1 toilette with separte shower en suite, 2. toilette with separate shower
Floor	Classic Stripes
Open cockpit	yes
Saloon	yes
Heating	diesel ducted hot air Eberspächer D4 Airtronic with 6 air vents
Chart table	yes
Aft Cabin	with twin bed 2 x
Dinette	yes
Dinette to convert into berth	yes
Opening door to cockpit	yes
Galley	2 burner gas stove, oven, fridge top and front load
Countertop	Duropol
Sink	stainless steel
Cooker	calor gas
Oven	gas
Fridge	yes
Hot water system	220V + engine
Water pressure system	electrical
Hot water tap	yes
Crockery	yes
Owners cabin	double bed
Wardrobe	hanging/drawers/shelves
Bathroom	en suite
Toilet	en suite
Toilet system	manual
Wash basin	in the bathroom
Shower	en suite



Guest cabin 1	double bed
Wardrobe	hanging/drawers/shelves
Bathroom	shared
Toilet	shared
Toilet system	manual
Wash basin	in the bathroom
Shower	shared
Guest cabin 2	double bed
Wardrobe	hanging/drawers/shelves
Bathroom	separate
Toilet	separate
Toilet system	manual
Wash basin	in the bathroom
Extra info	sun cushions cabin roof

MACHINERY

No of engines	1
Make	Volvo-Penta
Type	D2-55
HP	55
kW	40.48
Fuel	diesel
Year installed	2014
Engine hours	1640
Engine cooling system	freshwater heat exchanger
Drive	sail-drive
Engine controls	bowden cable
Gearbox	mechanical
Bowthruster	electric Quick retractable
Propeller type	folding
Propeller blades	3



Manual bilge pump	yes
Electric bilge pump	yes
Start battery	75 AH (2020)
Service battery	2 x 170 AH (2020)
Bowthruster battery	yes
Battery monitor	Philippi BLS (new 2020)
Battery charger	30A
Inverter	1500 W
Shorepower	with cable
Extra info	5 x 230V sockets 2 x USB sockets

NAVIGATION

Compass	Silva
Electric compass	B&G Fluxgate FC40
Depth sounder	yes
Log	yes
Windset	yes
VHF	B&G V50
VHF handheld	B&G
Autopilot	B&G
Plotter/GPS	B&G Zeus Touch 12"
AIS receiver	yes
Radio receiver	yes
Navigation lights	yes

EQUIPMENT

Sprayhood	yes
Bimini	yes
Cockpit cushions	yes
Bathing platform	yes
Boarding ladder	yes



Transom door	yes
Deck shower	yes
Anchor	Delta
Anchor chain	50 m, 8mm
Windlass	electrical
Dinghy	inflatable 2,30 m
Outboard	Honda 2,3 hp
Life raft	Plastimo Cruiser 4
Mooring lines	yes
Radio	Fusion MS-RA205, 2 Zone , remote in cockpit
Cockpit speakers	yes
Speakers in salon	yes
Extra info	Fusion dockingstation for Iphone, Ipod & Android

RIGGING

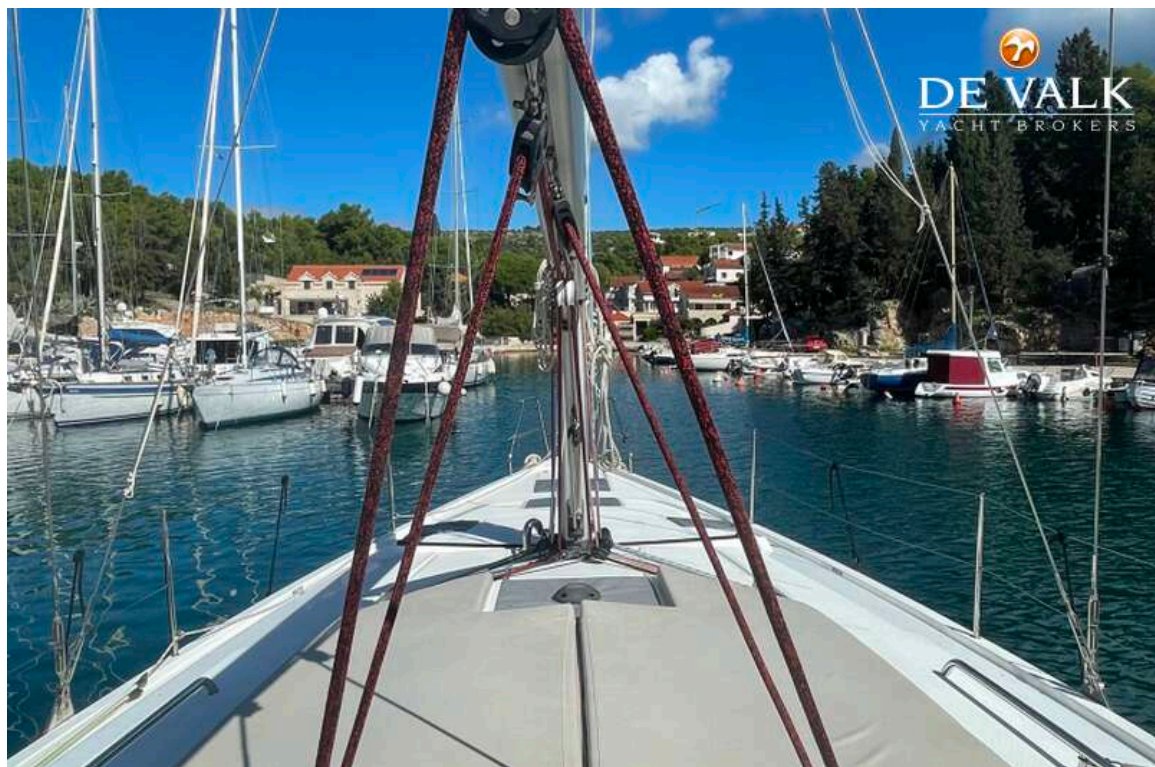
Rigging	sloop
Material mast	aluminium
Mainsail	with horizontal battens, 52.5 sqm, 2 reefs with one-line reefing system new in 2020 (UK Sailmakers X Drive Silver) UK X Drive Silver (2020)
Mainsail cover	yes
Fully battened mainsail	yes
Jib	Self-tacking jib with vertical battens 34.5 sqm, on Furler furling system, new in 2020 (UK Sailmakers X Drive Silver) UK X Drive Silver (2020)
Self tacking jib installation	yes
Reefing System	quick-one-line-reefing
Backstay adjuster	tackle
Primary sheet winch	yes
Genoa sheetwinches	Lewmar ST45 manual
Multifunctional winches	2 x electr. Lewmar 45 ST EVO 2 x manual Lewmar 45 ST EVO



HANSE 415



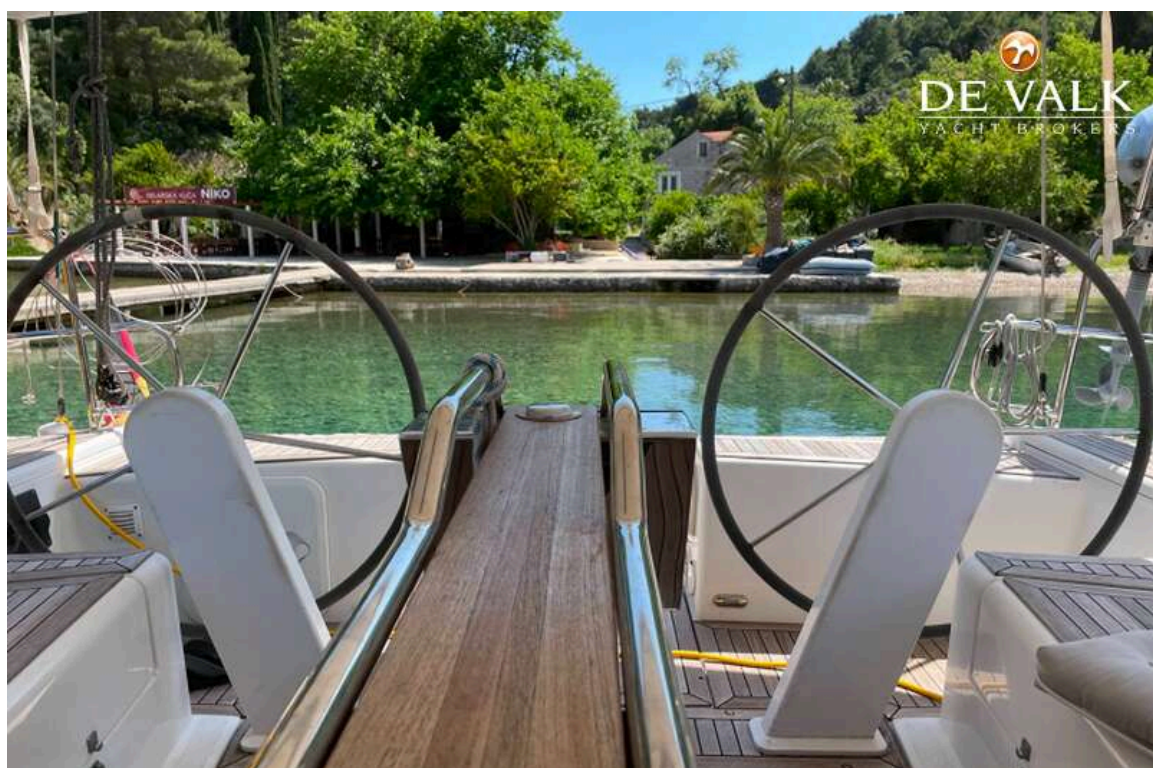
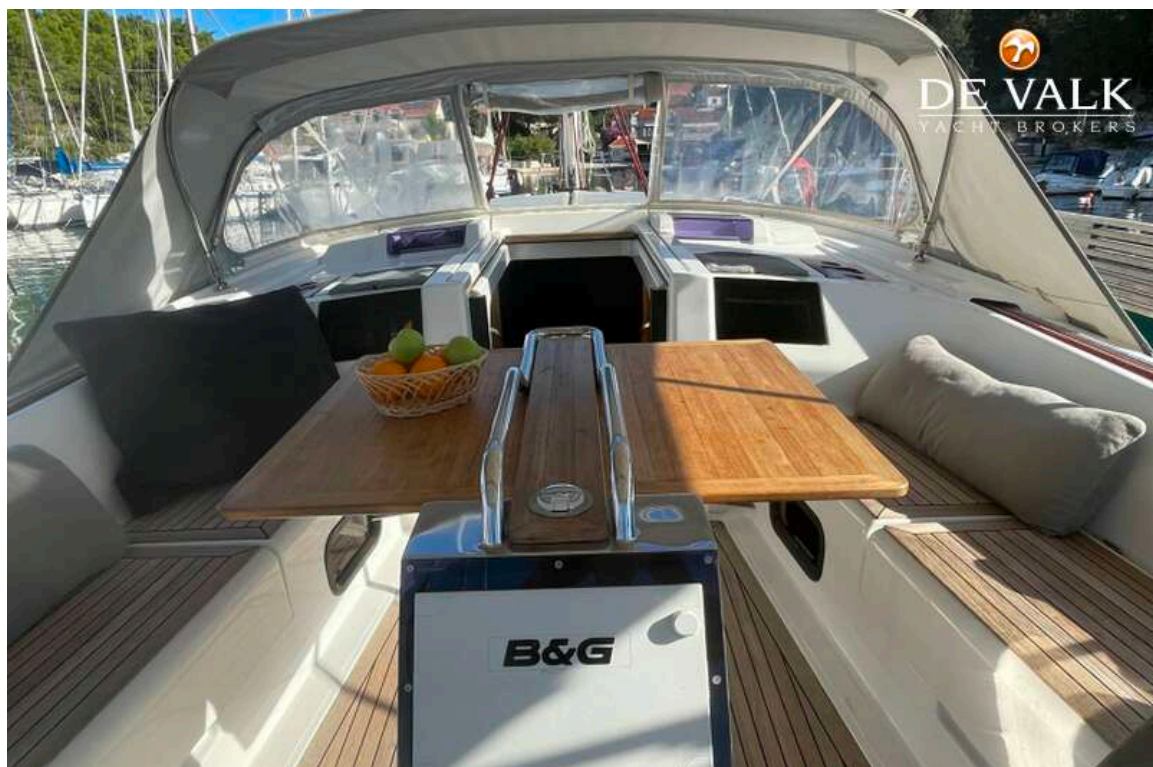
HANSE 415



HANSE 415



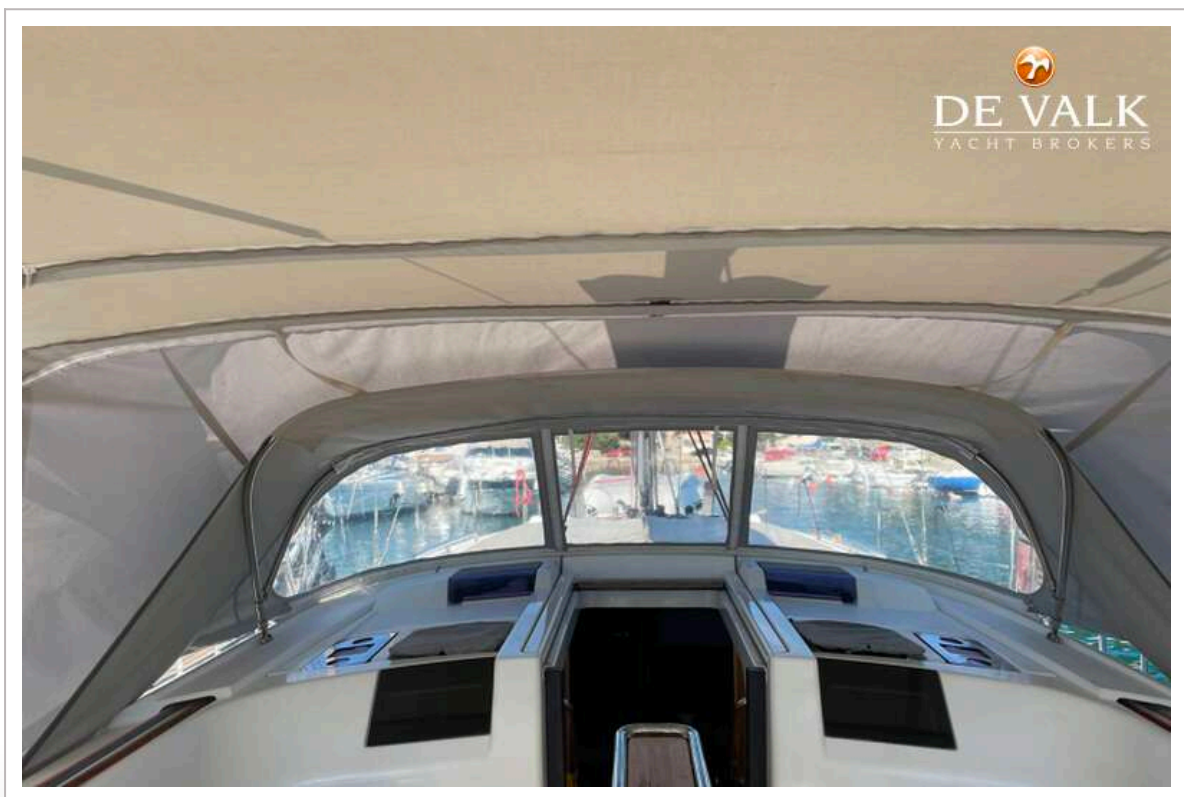
HANSE 415



HANSE 415



HANSE 415



HANSE 415

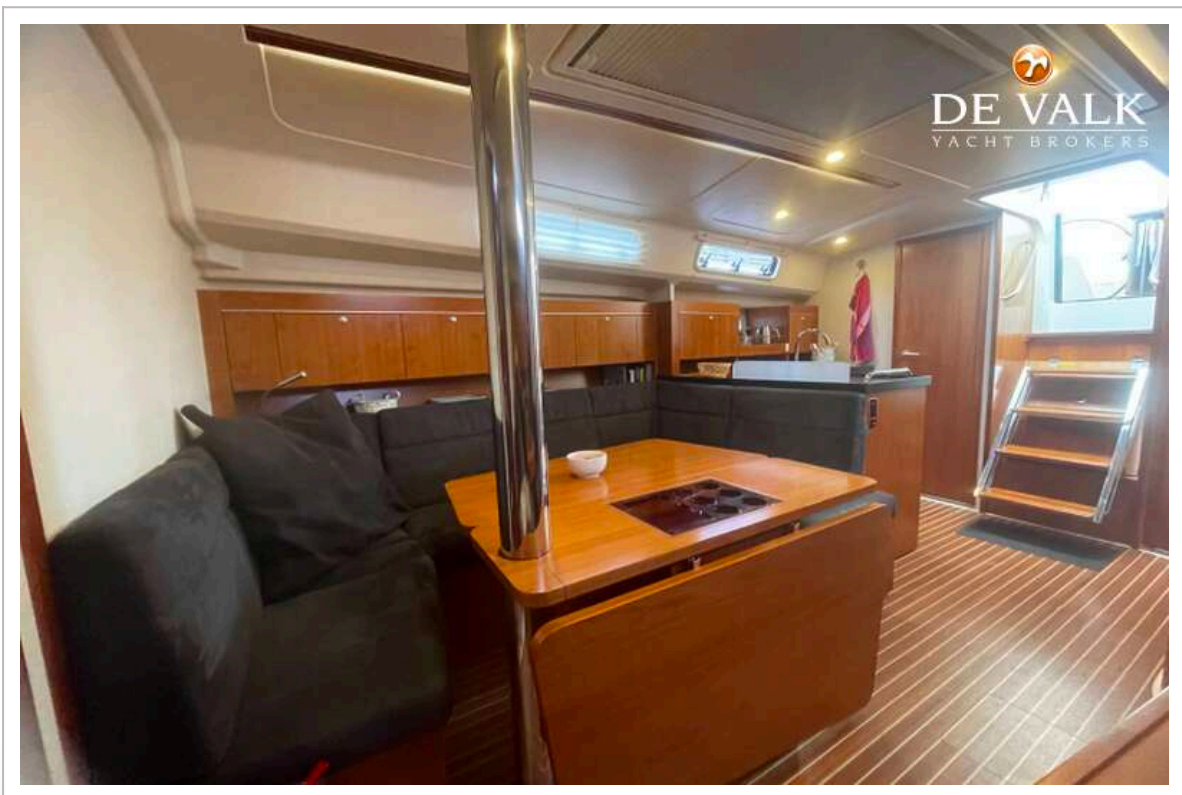




HANSE 415



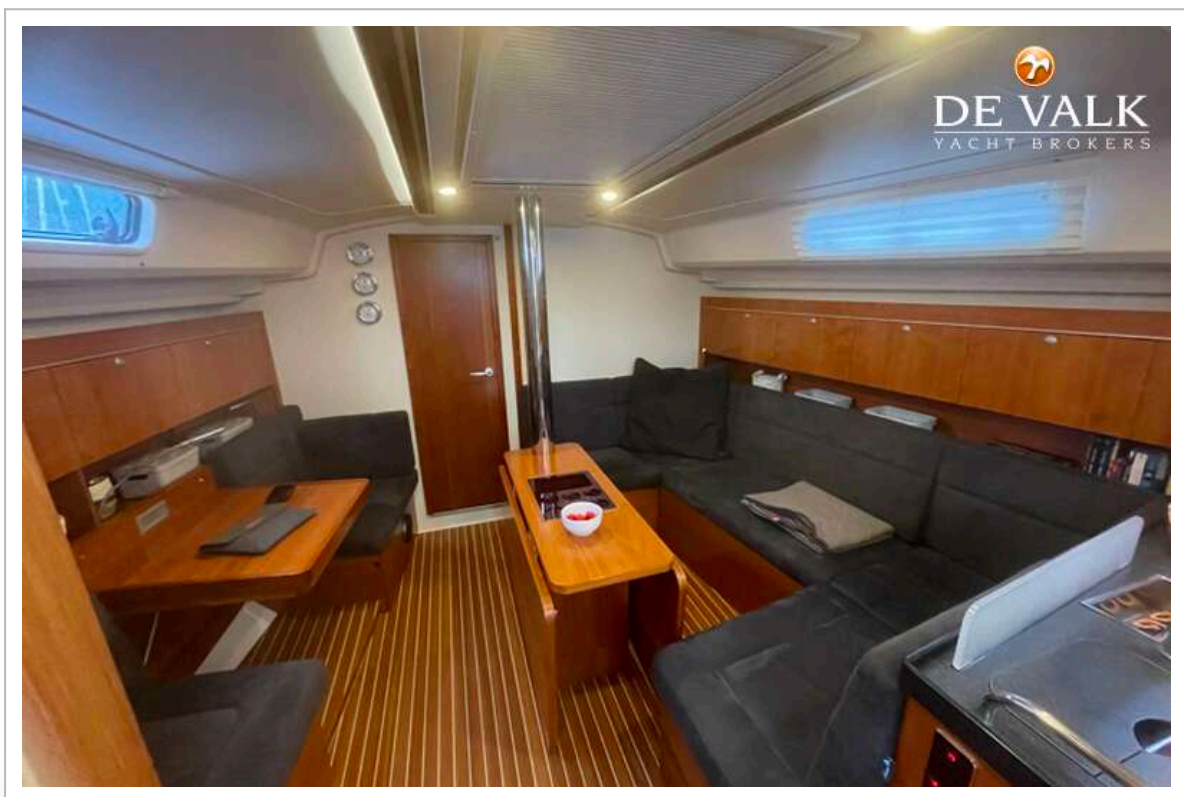
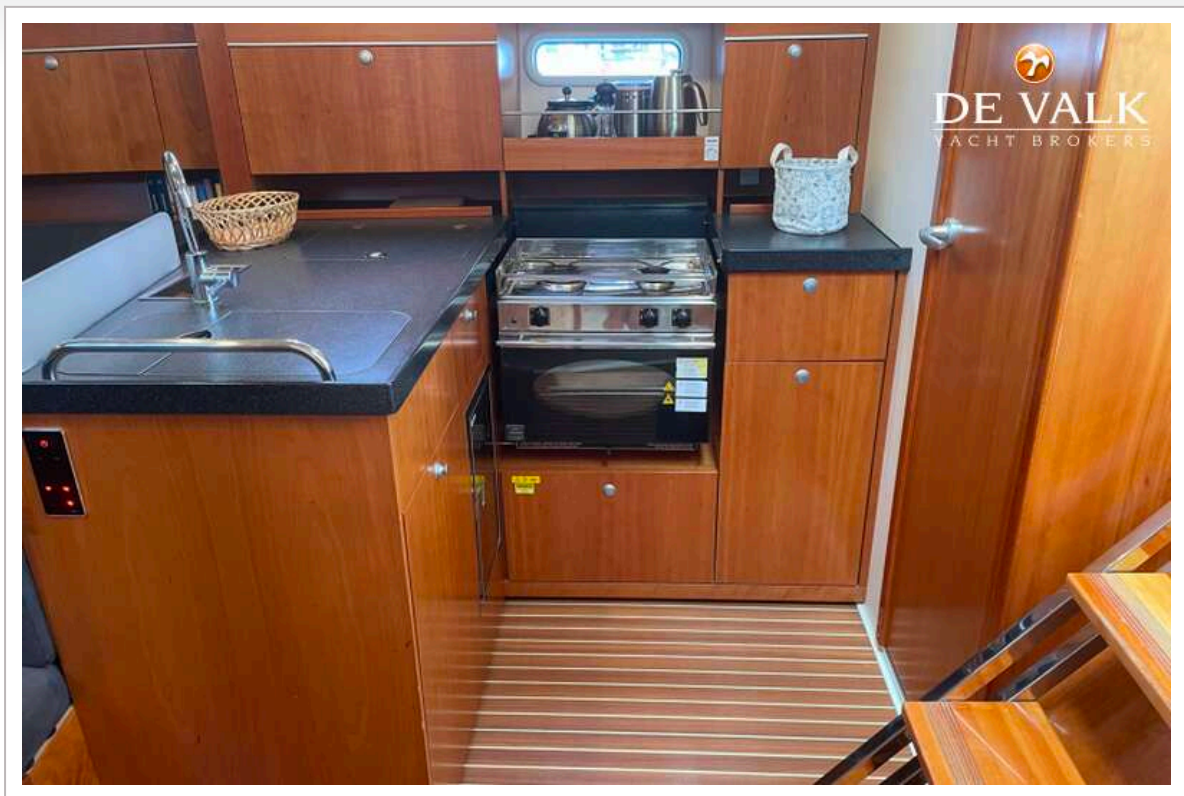
HANSE 415



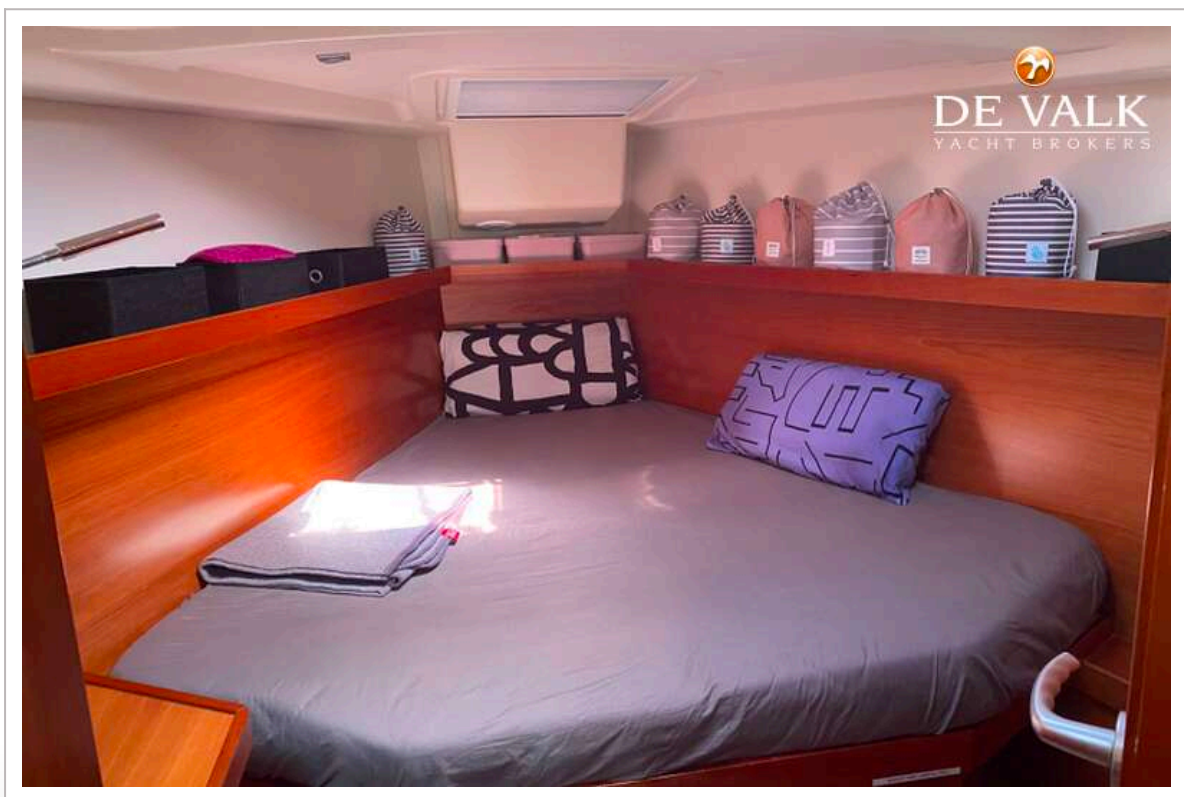
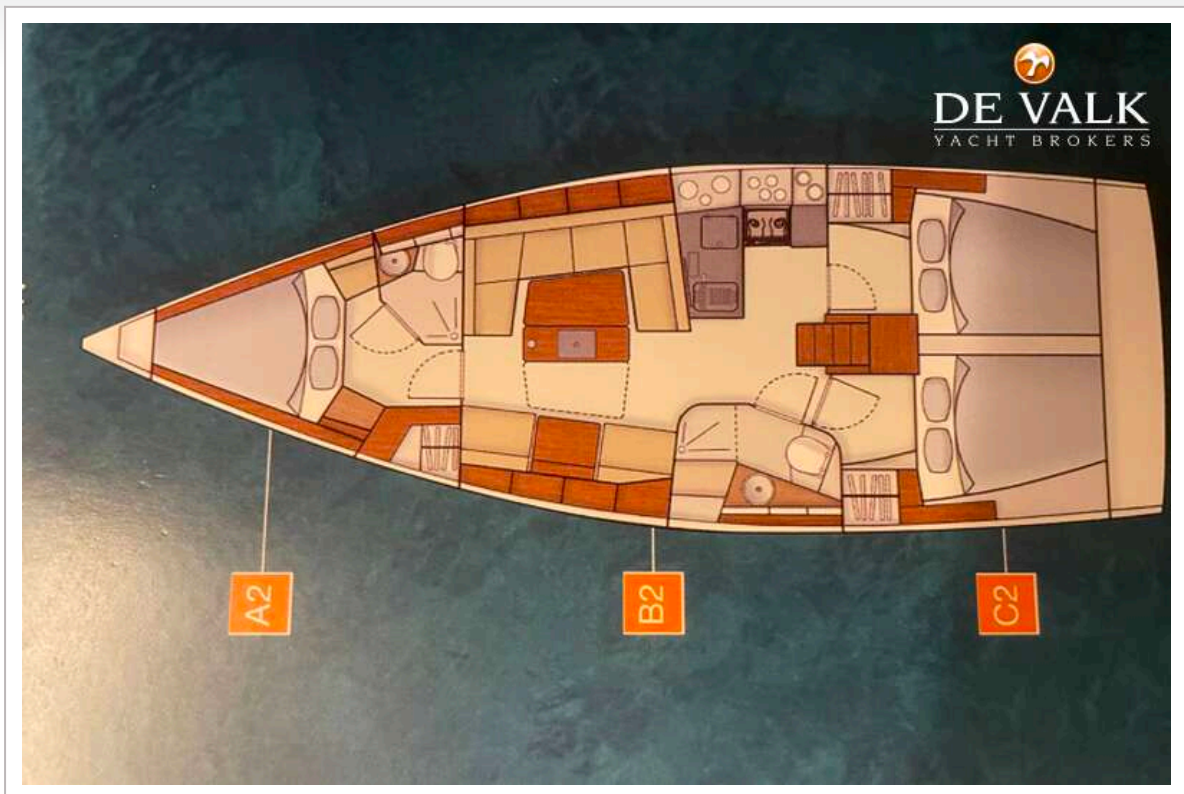
HANSE 415



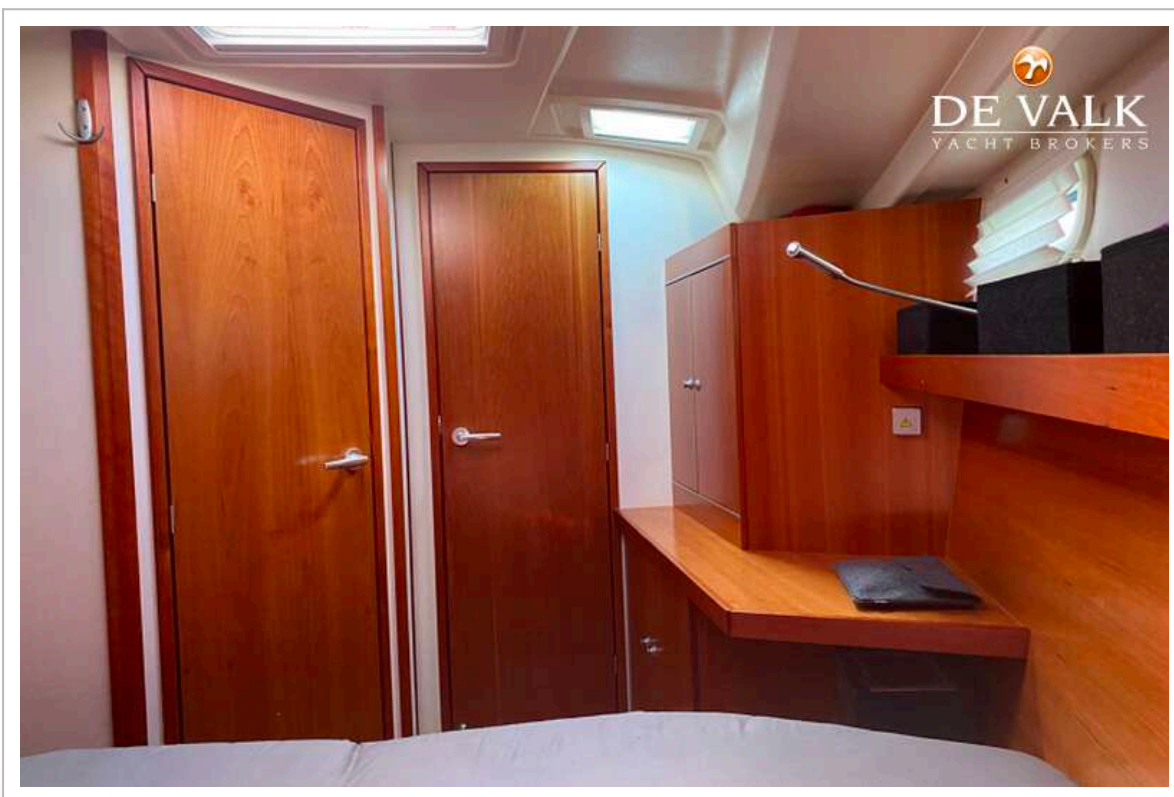
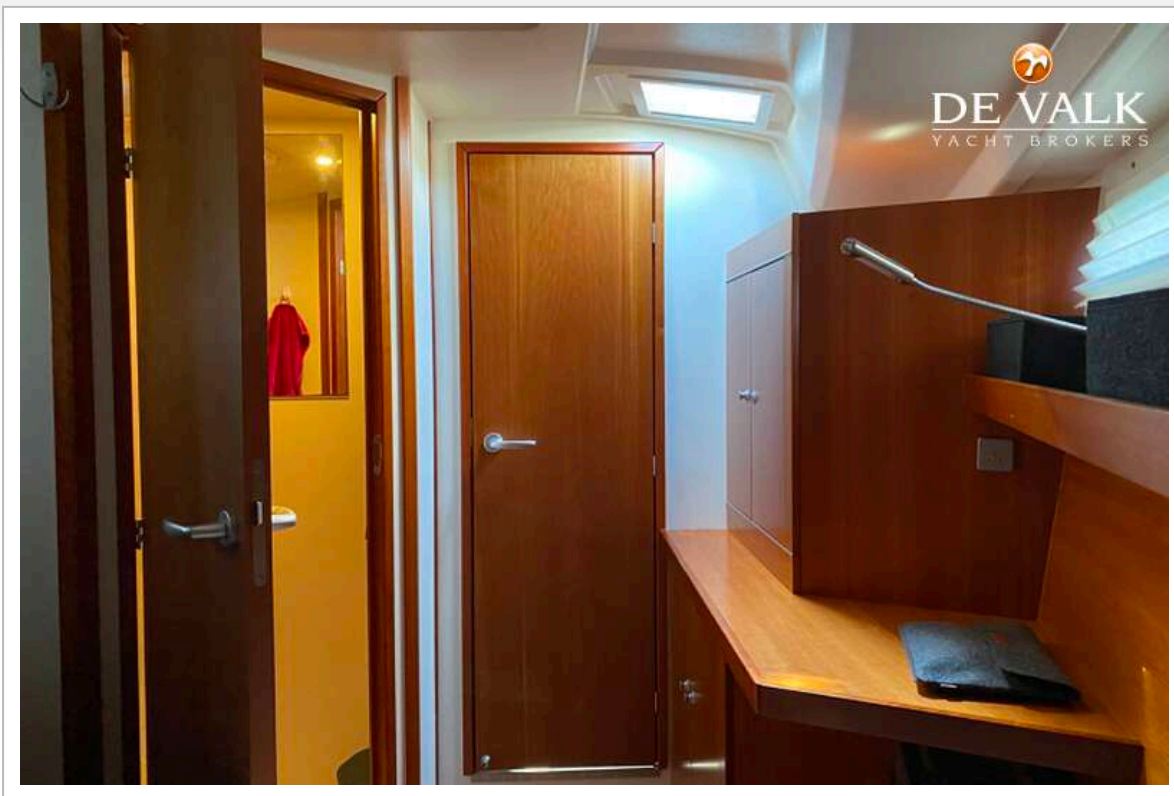
HANSE 415



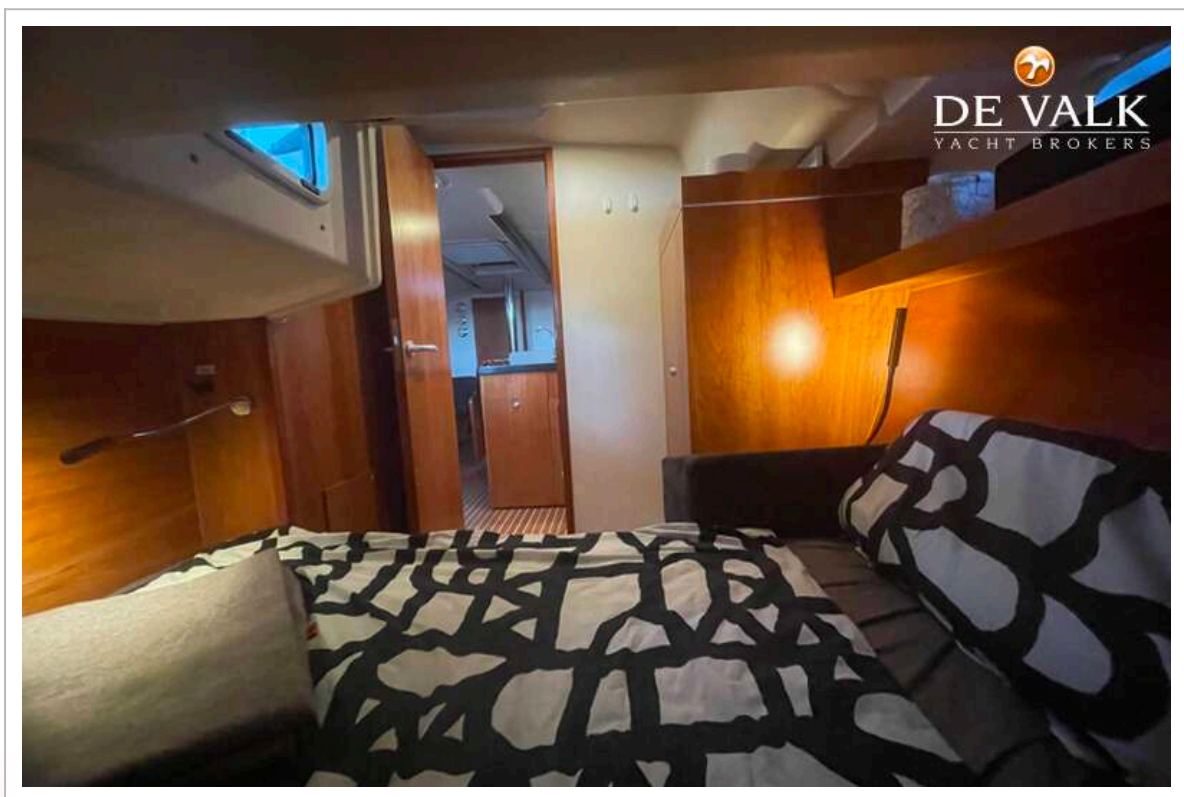
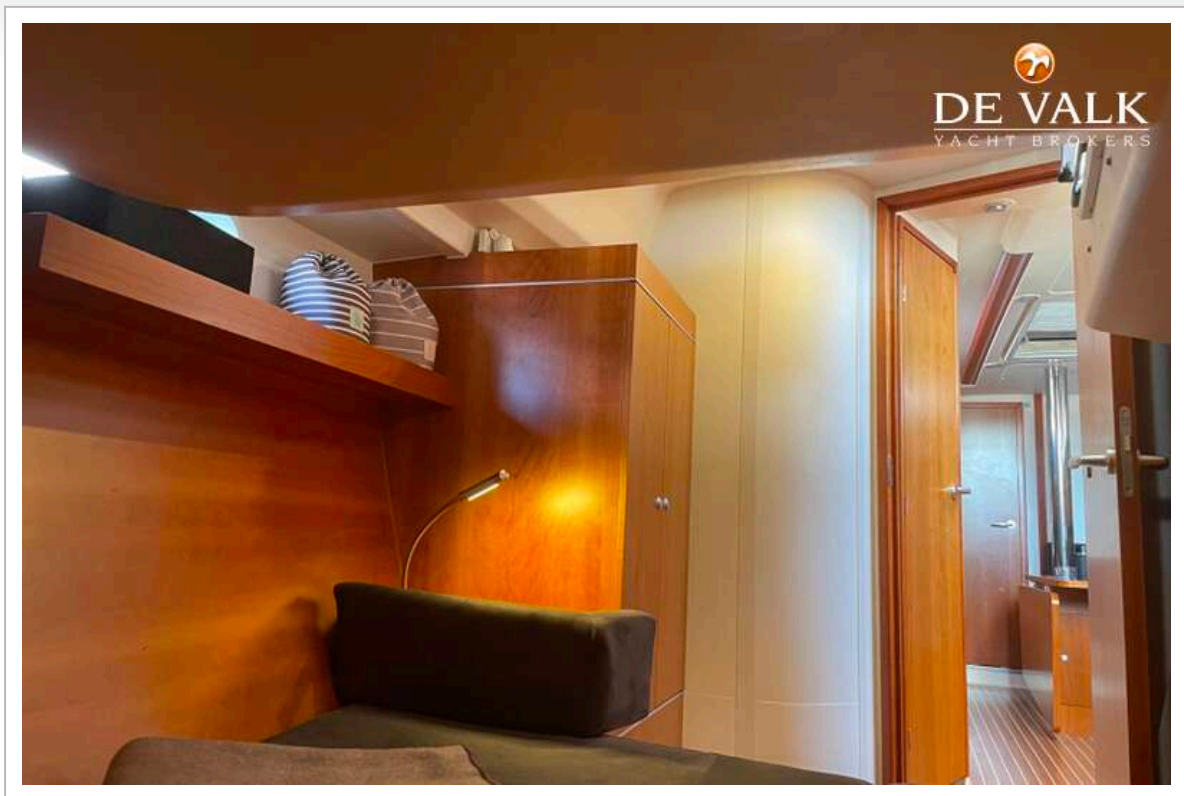
HANSE 415



HANSE 415



HANSE 415



HANSE 415

