



DE VALK
YACHT BROKERS



SEALINE C390



DE VALK
YACHT BROKERS

SEALINE C390

BROKER'S COMMENTS

Discover the thrill of effortless cruising with this virtually brand-new 2023 Sealine C390. Loaded with almost every available option and Powered by twin Volvo Penta D6-380 HP engines ,equipped with Volvo Penta joystick steering, she offers smooth handling and precision control at your fingertips. Onboard comfort is quaranteed thanks to a 3 cabin layout, Air conditioning and Eberspacher heating,making ervery voyage a pleasure. With full engine service completed in 2025 she is ready to go-no waiting,just pure enjoyment from day one.Step aboard and experience her elegance and adventure.

Ron Neij

SPECIFICATIONS

Dimensions	11.99 x 3.85 x 1.19 (m)	Builder	Sealine Yachts GmbH
Built	2023	Cabins	3
Material	GRP	Berths	6
Engine(s)	2 x Volvo Penta D6-380 diesel	Hp/Kw	2 x 380 (hp), 279.68 (kw)
Asking price	€ 625.000 (VAT Paid)	Lying	at sales office

CONTACT

Sales office	De Valk Monnickendam	Telephone	+31 299 65 63 50
Address	Hoogedijk 6 1145 PM Katwoude The Netherlands	E-mail	monnickendam@devalk.nl

DISCLAIMER

These particulars are given in good faith as supplied but cannot be guaranteed.



SEALINE C390

GENERAL

Model	SEALINE C390
Type	motor yacht
LOA (m)	11,99
LWL (m)	10,11
Beam (m)	3,85
Draft (m)	1,19
Air draft (m)	3,80
Year built	2023
Launched	Built in 2022, delivered and lauched 2023
Builder	Sealine Yachts GmbH
Country	Germany
Designer	Bill Dixon Watervision
Displacement (t)	15
CE norm	B
Hull material	GRP
Hull colour	white
Hull shape	deep-V
Superstructure material	GRP
Rubbing strake	rubber
Deck material	GRP
Deck finish	synthetic teak
Cockpit deck finish	synthetic teak
Antifouling (year)	03-2025
Fuel tank (litre)	Approx. 900 litre (2 x 450 litre)
Freshwater tank (litre)	Approx. 375 (2025)
Blackwater tank (litre)	Approx. 170
Greywater tank (litre)	Approx. 210
Wheel steering	hydraulic
Inside helm position	yes
Extra info	Side door on starbord side near the inside steering position



ACCOMMODATION

Cabins	3
Berths	6
Interior	walnut - Atlanta walnut with high gloss finish
Floor	Velvet oak in th saloon and Ivory carpet in the cabins .
Open cockpit	With convertible settee and height adjustabletable tabel
Saloon	yes
Sliding roof	electric - Glass sliding roof
Heating	diesel ducted hot air - Eberspacher Airtronic M2 D4R
Heating 2	Eberspacher Airtronic M2 D4R
Air-conditioning	Dometic air-conditioning
Dinette	yes
Opening door to cockpit	yes
Galley	yes
Countertop	yes
Sink	stainless steel
Cooker	calor gas - Thetford 2 burner
Oven	Dometic
Fridge	Isothemp CR130 with freezing compartment, Vitrifrigo winecooler drawer.
Hot water system	220V + engine - Quick 40 litre boiler
Water pressure system	electrical - Jabsco Par-max 2.9
Owners cabin	French bed
Wardrobe	hanging and shelves
Bathroom	en suite
Toilet	yes
Toilet system	electric - Jabsco
Wash basin	yes
Shower	yes
Guest cabin 1	double bed
Wardrobe	hanging and shelves
Bathroom	separate



SEALINE C390

Toilet	yes
Toilet system	electric - Jabsco
Wash basin	yes
Shower	yes
Guest cabin 2	twin single
Wardrobe	hanging and shelves
Extra info	Upholstery colour: Capetown (cliffside) inside and colour Madeira (marine salt) outside
Extra info	Folding copilot seat on portside Folding backrest in the cockpit to convert the settee into a big sunbed

MACHINERY

No of engines	2
Make	Volvo Penta
Type	D6-380
HP	380
kW	279.68
Fuel	diesel
Engine hours	230
Engine cooling system	freshwater heat exchanger
Drive	Z-drive
Engine controls	electrical - Volvo Penta engine control and Volvo Penta Joystick steering
Bowthruster	electric - Quick
Exhaust	watercooled
Propeller type	fixed - Duoprop
Propeller shaft material	stainless steel
Manual bilge pump	In the cockpit
Electric bilge pump	yes
Start battery	2 x DETA AGM 95ah
Service battery	2 x Qbatteries AGM 260ah
Battery monitor	Victron BMV-712 smart battery monitor



SEALINE C390

Battery charger	Mastervolt Chargemaster Plus 12/30-3, Mastervolt Chargemaster Plus 12/35-3
Shorepower	with cable And a duo head to the air conditioning and electrical system.
Insulation transformer	2 x Prosafe FS30 galvanic isolator
Trimtabs	Mente marine trimtabs
Extra info	My Sealine Safety cloud Sentinel boat monitor
Extra info	2 x Volvo Penta diesel filter Electric folding engineroom hatch
Extra info	Engine and drive service (2 year/200hrs) done by autotized Volvo Penta service station 03-2025

NAVIGATION

Compass	Silva liquid compass
Multi control display	Raymarine i70s
Depth sounder	yes
Depth sounder/log	Depth/log/temperature via Raymarine system
VHF	Raymarine
Autopilot	Raymarine
Rudder angle indicator	In the screen of the autopilot
GPS	Raymarine RS150 and GA200 receiver
Plotter/GPS	Raymarine Axiom XL 16"
AIS receiver	Raymarine
Navigation lights	yes

EQUIPMENT

Cockpit cover	yes
Bimini	Canvas sliding roof over cockpit
Sun awning	Window blinds for forewindow and two side windows Sunsail above the sunbed on the foredeck
Cockpit cushions	Colour: Madeira (marine salt)
Cockpit table	Teak table, divisible and height adjustable
Bathing platform	Synthetic teak finish



SEALINE C390

Boarding ladder	stainless steel
Transom door	yes
Anchor	Delta - Lewmar 16KG delta anchor, galvanized
Anchor chain	60 metre galvanized chain
Windlass	Quick electric windlass
Sea railing	stainless steel
Life raft	valise (or bag) - Seago
Life raft (pers)	6 persons
Lifejackets	4 x Adults and 1 x child
Wiper	2 x
Fenders	yes
Mooring lines	yes
TV	Samsung 21" smart tv
TV receiver	yes
Radio	Fusion in the salon with remote in the cockpit
Cockpit speakers	yes
Speakers in salon	yes
Fire extinguisher	yes
Extinguisher in engine room	yes
Extra info	Foredeck sun bed cushions
Extra info	Electric engine hatch



SEALINE C390



SEALINE C390



SEALINE C390



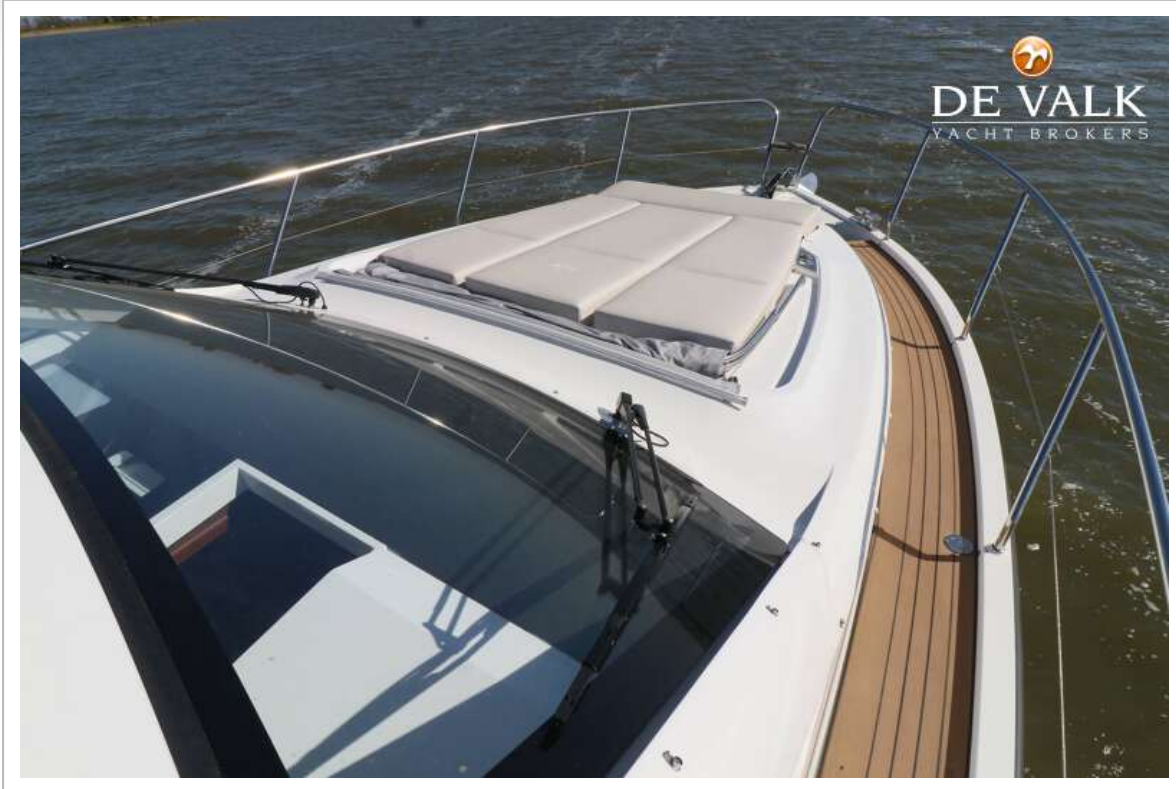
SEALINE C390



SEALINE C390



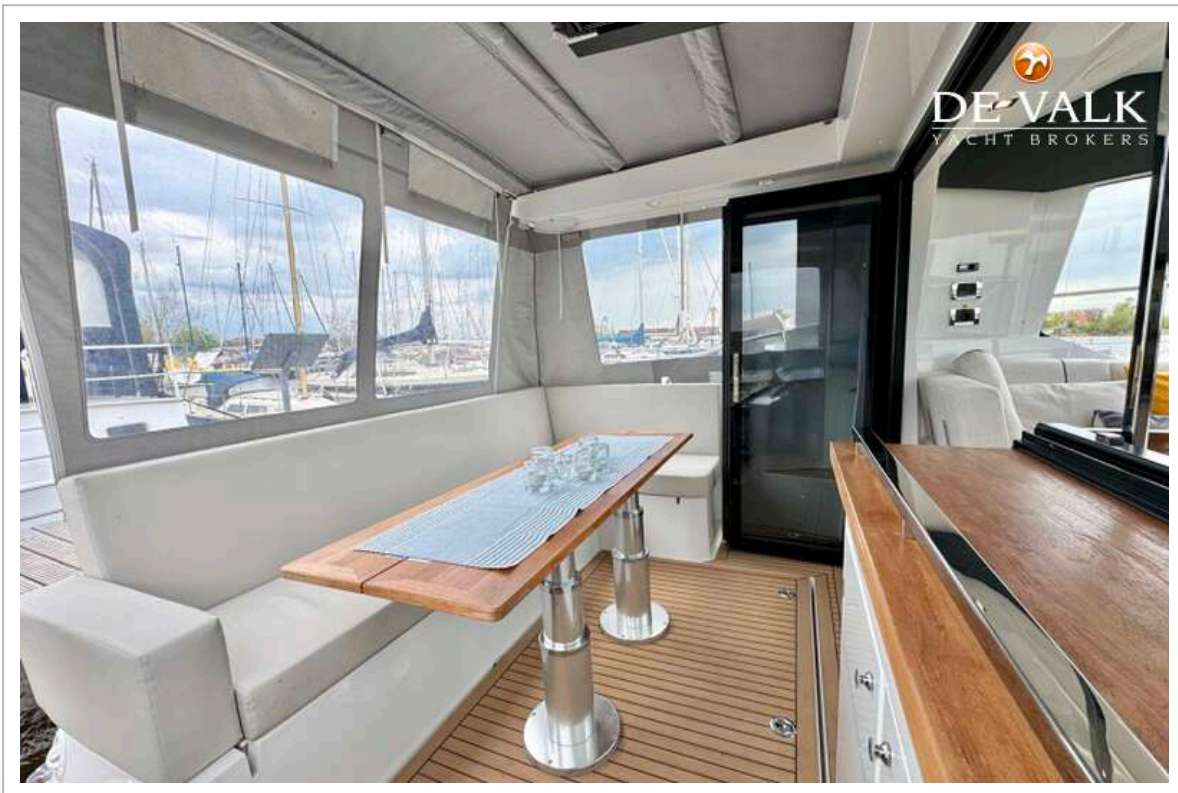
SEALINE C390



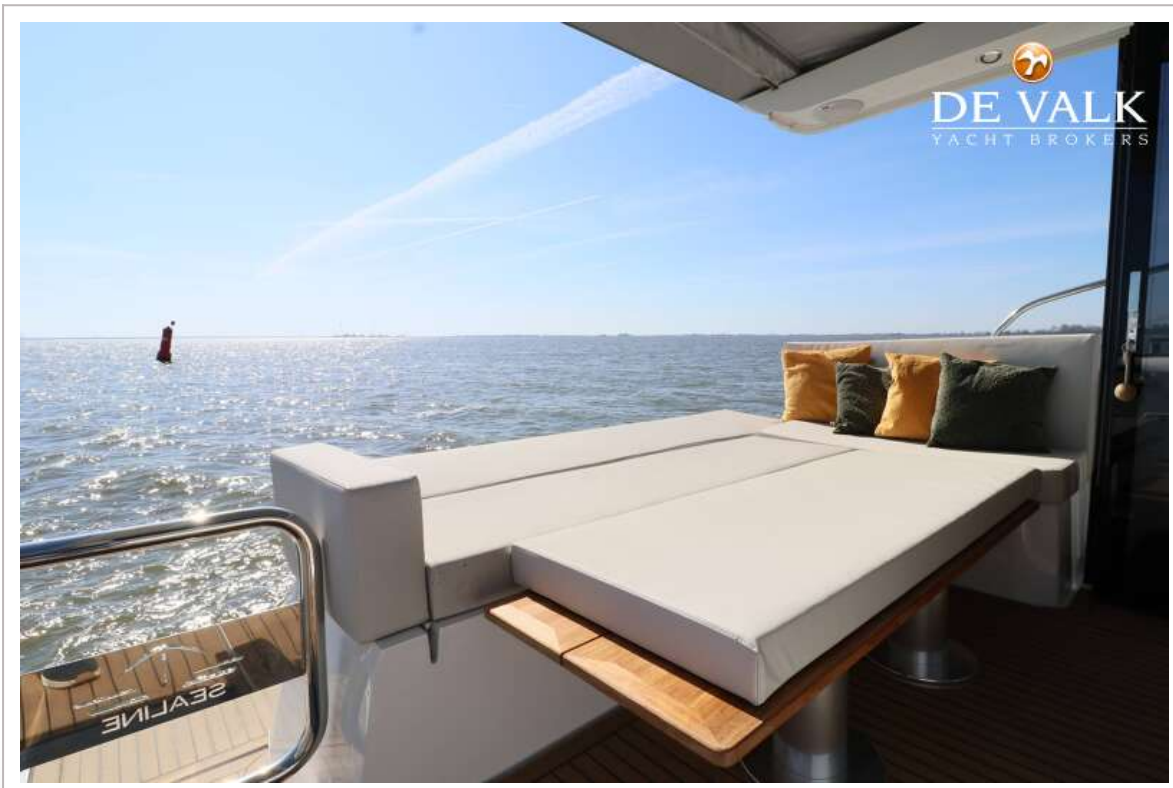
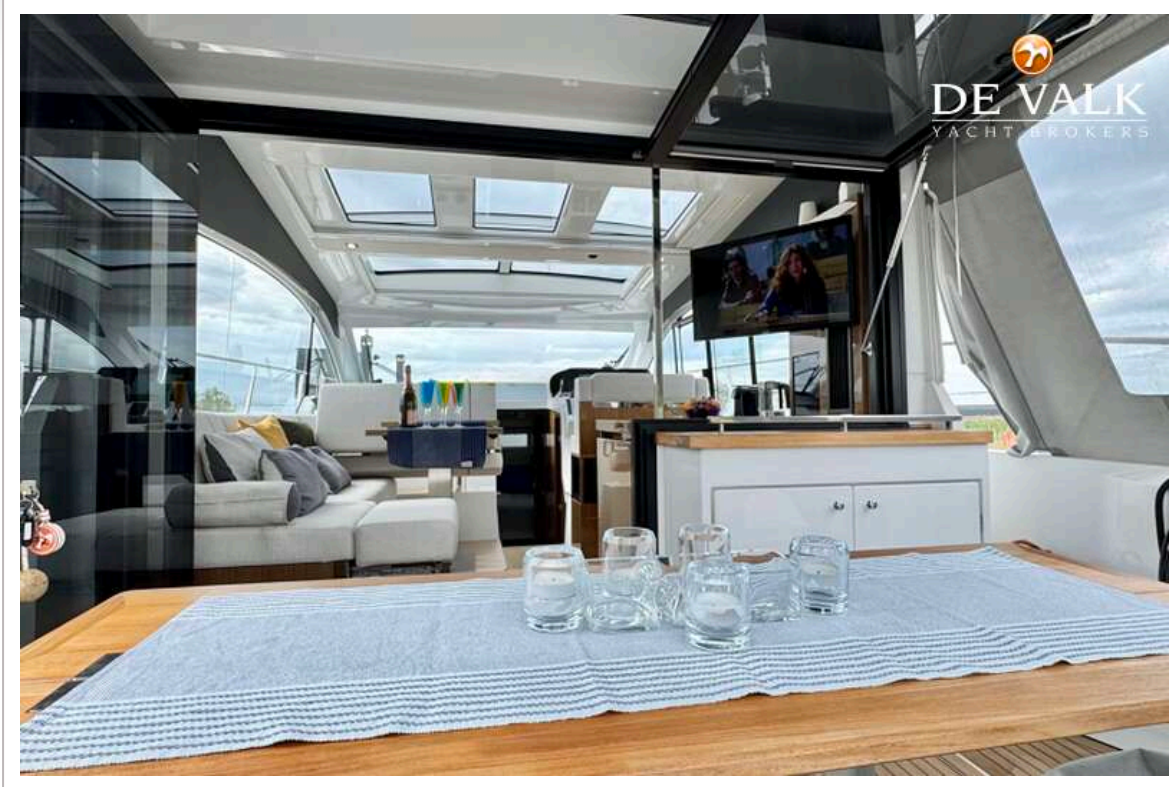
SEALINE C390



SEALINE C390



SEALINE C390



SEALINE C390



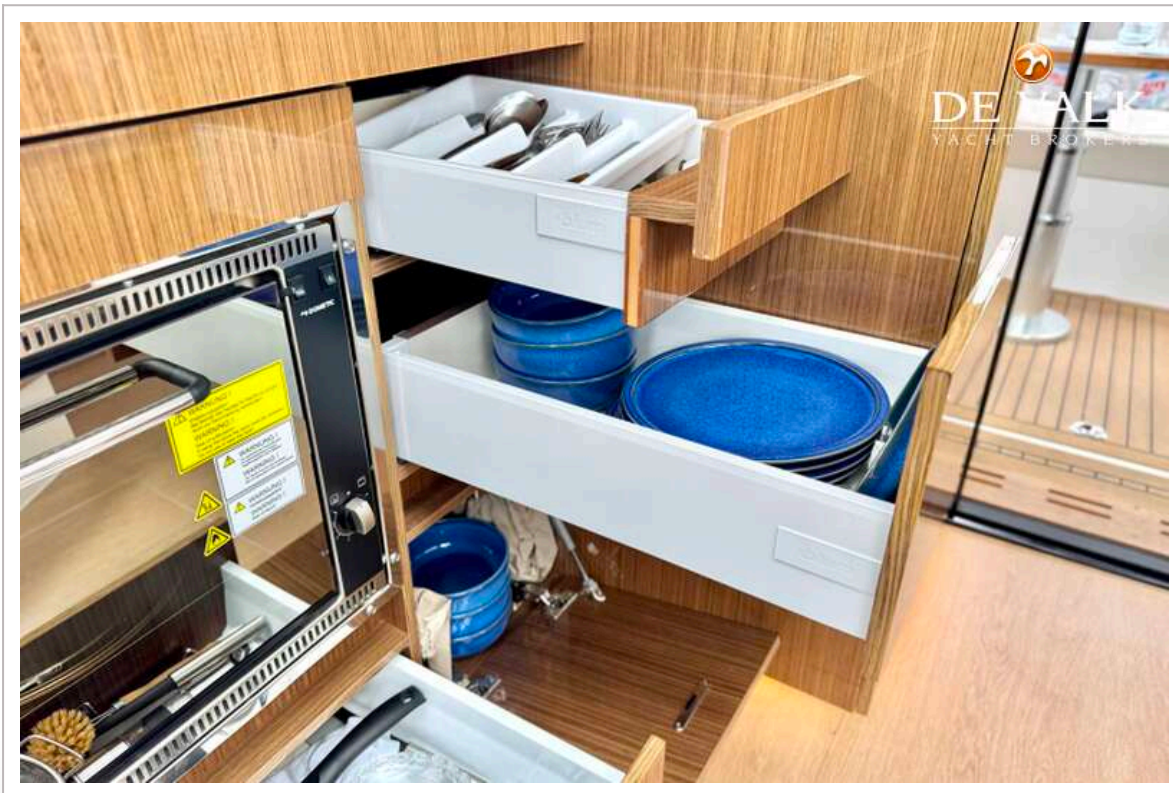
SEALINE C390



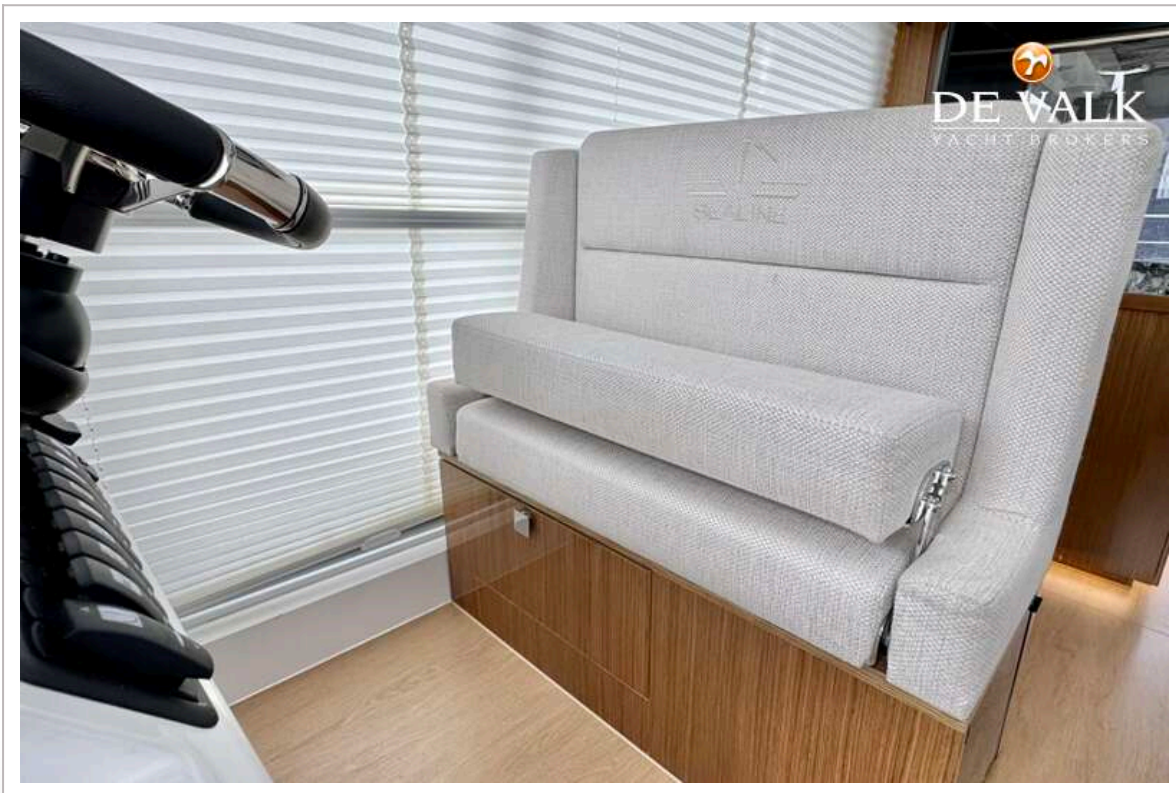
SEALINE C390



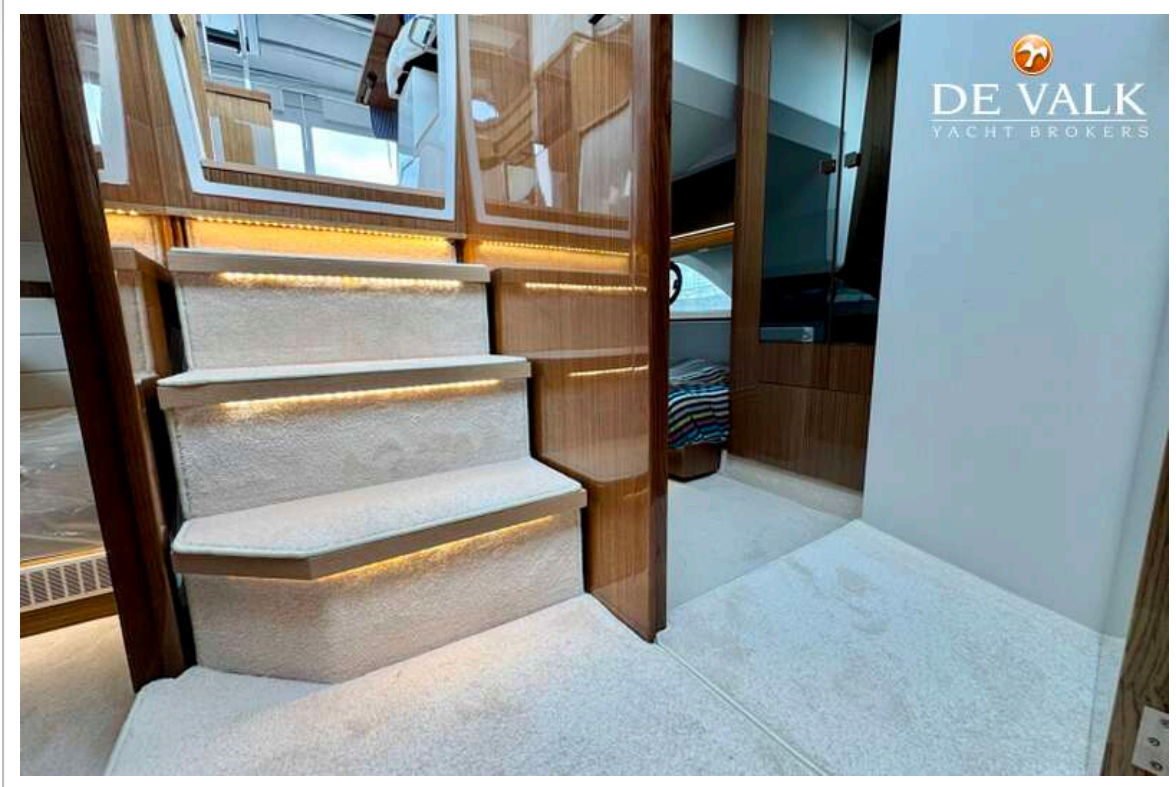
SEALINE C390



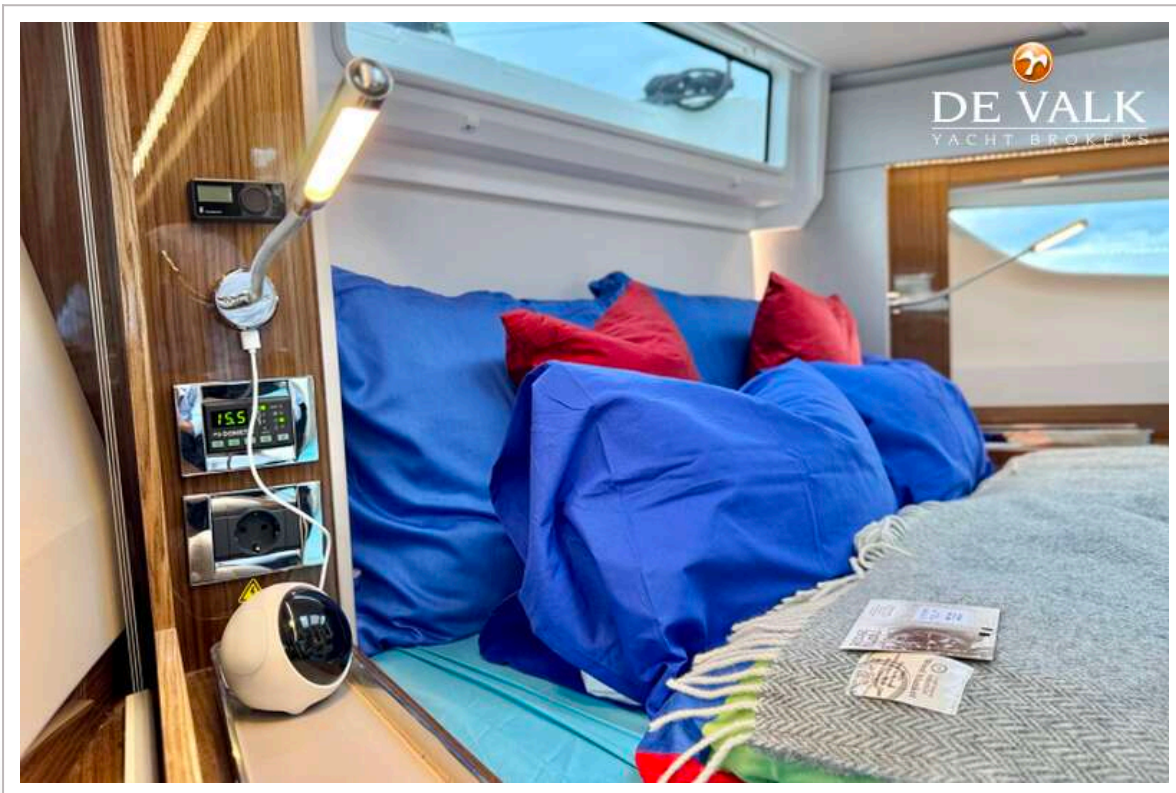
SEALINE C390



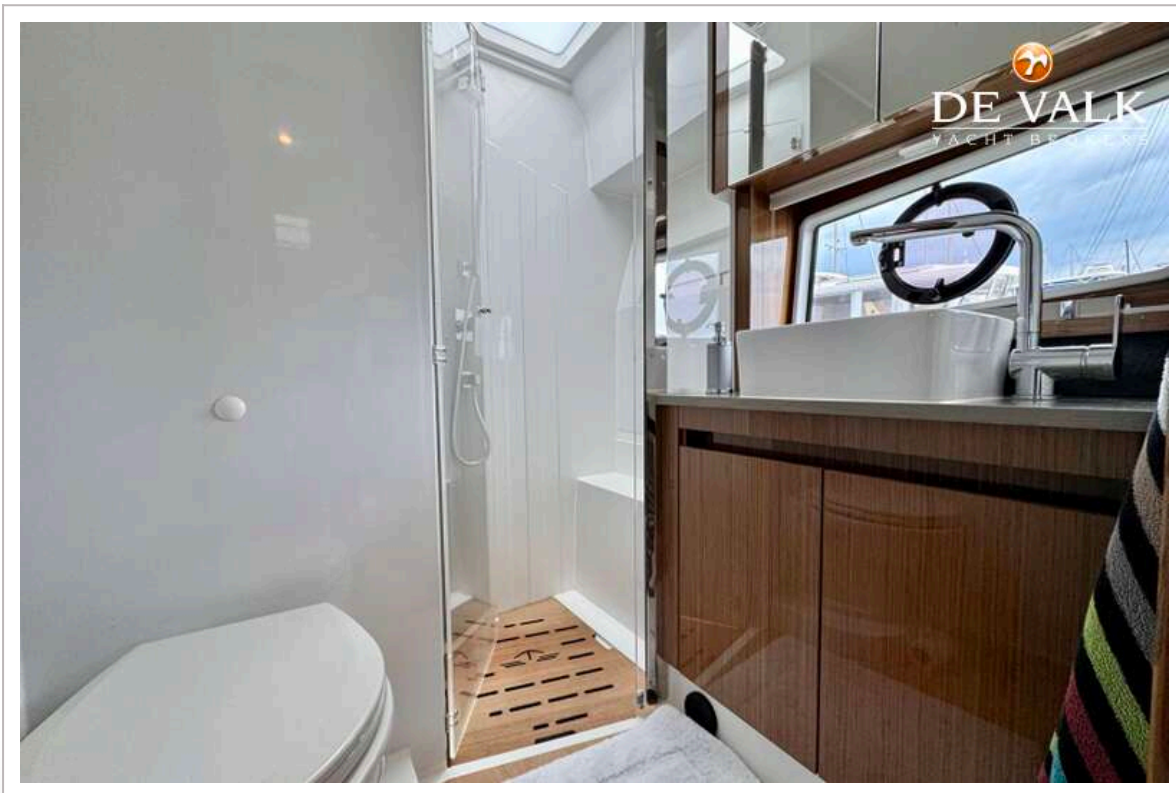
SEALINE C390



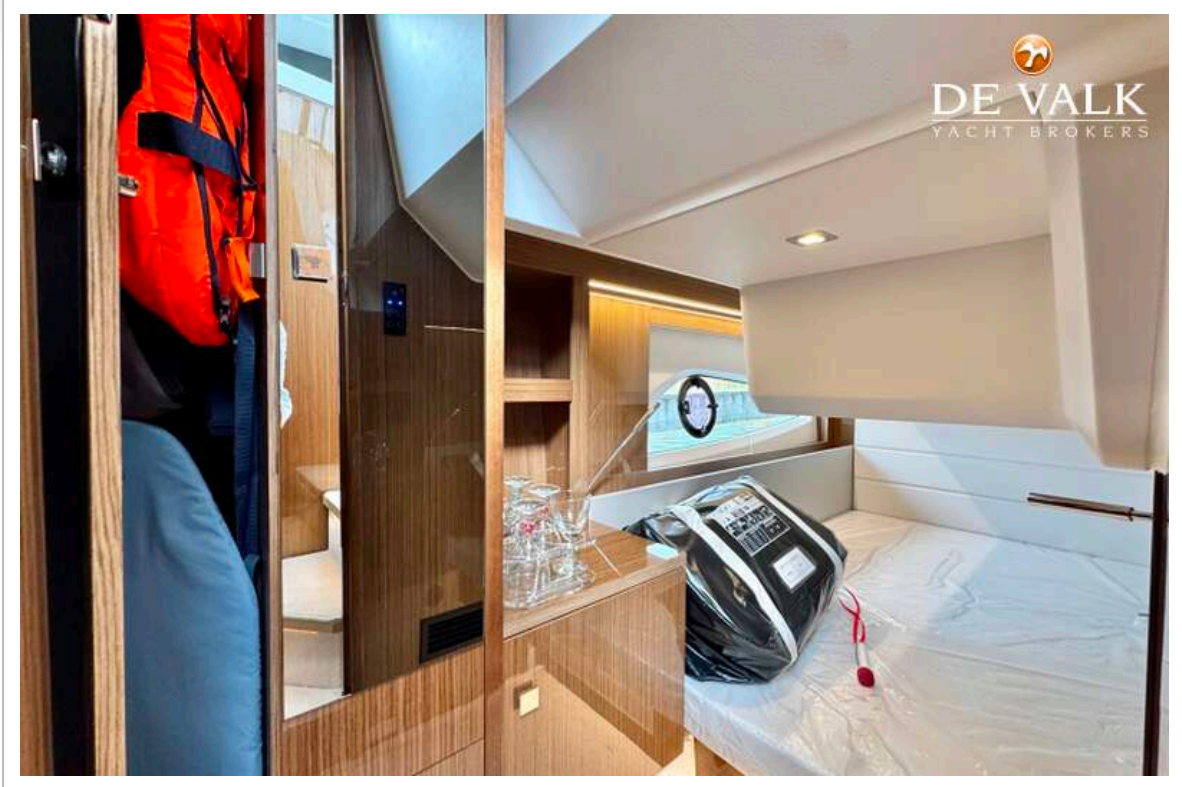
SEALINE C390



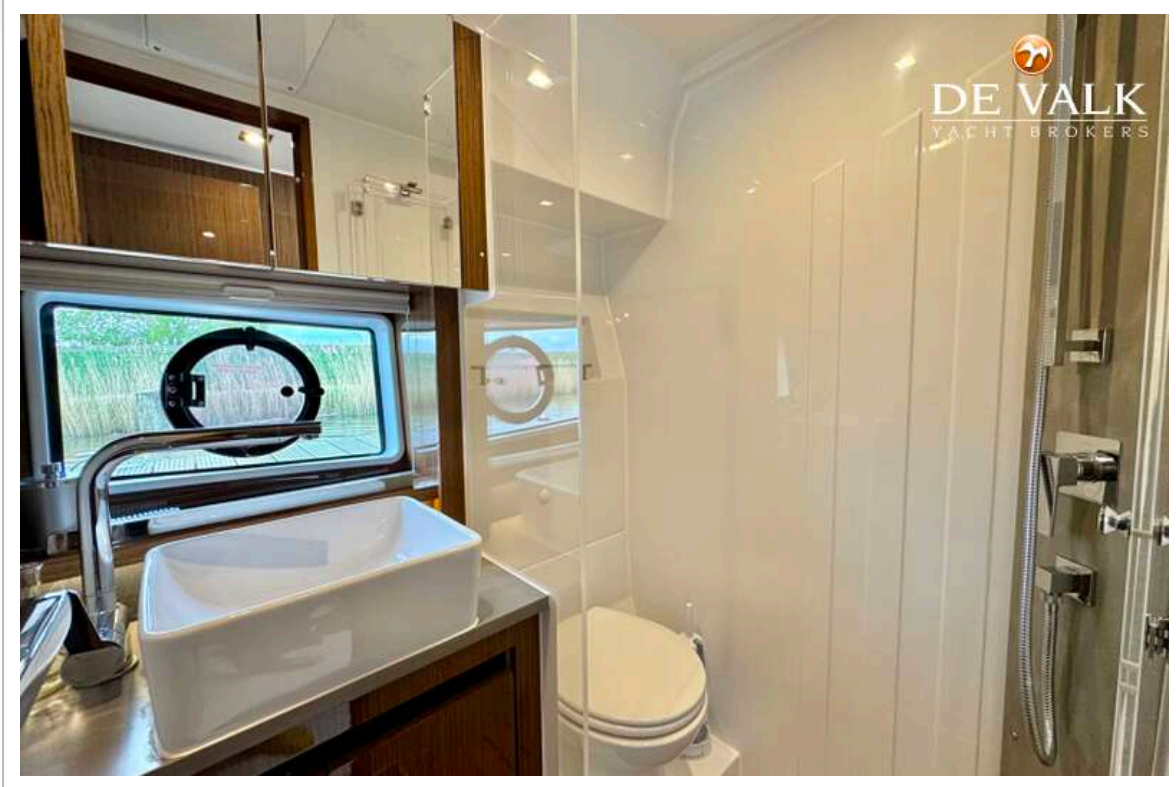
SEALINE C390



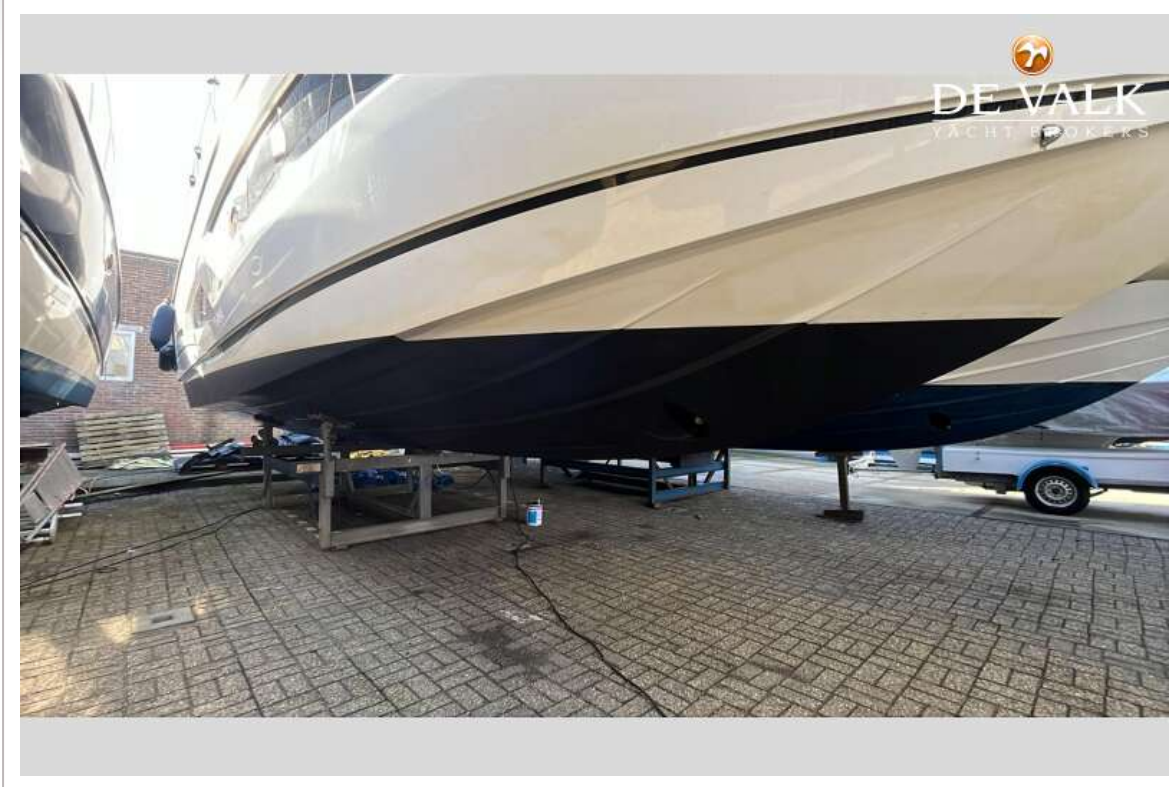
SEALINE C390



SEALINE C390



SEALINE C390



SEALINE C390

