



DE VALK
YACHT BROKERS



BAVARIA 46 CRUISER



DE VALK
YACHT BROKERS

BAVARIA 46 CRUISER

BROKER'S COMMENTS

The Bavaria Cruiser 46 is one of the best sailing yachts in her class. It would be hard to find a sailing yacht that offers more space, more comfort, and more luxury. She is easy to handle making her a pure sailing pleasure. With her large cockpit, spacious cabins, and comfortable salon there is ample room for relaxing and socializing. The Bavaria Cruiser 46 truly encapsulates what is important in a luxury cruiser!

Sofia Iliia-Salvanou

SPECIFICATIONS

Dimensions	13.65 x 4.33 x 1.90 (m)	Builder	BAVARIA YACHTBAU GMBH
Built	2016	Cabins	4
Material	GRP	Berths	8
Engine(s)	1 x VOLVO PENTA D2-55 diesel	Hp/Kw	55.00 (hp), 40.48 (kw)
Asking price	€ 199.000 (VAT Not paid)	Lying	at sales office

CONTACT

Sales office	De Valk Corfu	Telephone	(+30) 266 111 8095
Address	New Port of Corfu, near Gouvia Marina 490 83 Corfu Greece	E-mail	corfu@devalk.nl

DISCLAIMER

These particulars are given in good faith as supplied but cannot be guaranteed.



BAVARIA 46 CRUISER

GENERAL

Model	BAVARIA 46 CRUISER
Type	sailing yacht
LOA (m)	13,65
LWL (m)	12,89
Beam (m)	4,33
Draft (m)	1,90
Year built	2016
Builder	BAVARIA YACHTBAU GMBH
Country	Germany
Displacement (t)	12,2
Ballast (tonnes)	cast iron
Gross tonnage	28,23
Net tonnage	27,01
CE norm	A
Hull material	GRP
Hull colour	white
Keel type	fin keel with bulb
Superstructure material	GRP
Deck material	GRP
Deck finish	non-skid moulded in
Superstructure deck finish	non-skid moulded in
Cockpit deck finish	teak
Antifouling (year)	2024
Window frame	aluminium
Fuel tank (litre)	polyethylene 250
Level indicator (fuel tank)	yes
Freshwater tank (litre)	polyethylene 360
Level indicator (freshwater)	yes
Blackwater tank (litre)	210 (3X70)
Level indicator (blackwater)	yes



BAVARIA 46 CRUISER

Blackwater tank extraction	deck extraction + uw line
Wheel steering	chain steering
Emergency tiller	yes

ACCOMMODATION

Cabins	4
Berths	8
Interior	oak
Layout	4 CABINS PLUS 3 WC
Floor	woodprint
Saloon	yes
Chart table	yes
Aft Cabin	yes
Dinette	yes
Sliding door to cockpit	yes
Opening door to cockpit	yes
Galley	yes
Countertop	plastic
Sink	stainless steel
Cooker	calor gas
Oven	yes
Fridge	X 2
Hot water system	220V + engine
Water pressure system	electrical
Kettle	yes
Crockery	yes
Owners cabin	double bed
Wardrobe	yes
Bathroom	shared
Toilet	shared
Toilet system	manual



BAVARIA 46 CRUISER

Wash basin	at the toilet
Shower	shared
Guest cabin 1	double bed
Wardrobe	yes
Bathroom	shared
Toilet	shared
Toilet system	manual
Wash basin	at the toilet
Shower	shared
Guest cabin 2	double bed
Wardrobe	yes
Bathroom	en suite
Toilet	en suite
Toilet system	manual
Wash basin	in the bathroom
Shower	en suite
Guest cabin 3	double bed
Wardrobe	yes
Bathroom	en suite
Toilet	en suite
Toilet system	manual
Wash basin	in the bathroom
Shower	en suite

MACHINERY

No of engines	1
Make	VOLVO PENTA
Type	D2-55
HP	55
kW	40.48
Fuel	diesel



BAVARIA 46 CRUISER

Maximum speed (kn)	7
Cruising speed (kn)	6,5
Consumption (l/hr)	5,5
Engine hours	3180
Engine cooling system	seawater
Drive	sail-drive
Engine controls	mechanical
Gearbox	mechanical
Bowthruster	electric
Exhaust	watercooled
Propeller type	fixed
Propeller blades	3
Manual bilge pump	yes
Electric bilge pump	yes
Batteries	yes
Start battery	yes
Service battery	yes
Navigation Battery	yes
Bowthruster battery	NEW 2024
Battery monitor	yes
Battery charger	yes
Solar panel	yes
Shorepower	with cable
Insulation transformer	yes

NAVIGATION

Compass	yes
Depth sounder/log	yes
Windset	yes
VHF	X 2, Batteries NEW 2023
Autopilot	yes



BAVARIA 46 CRUISER

Plotter/GPS	yes
Electronic chart(s)	yes
AIS receiver	yes
AIS transponder	yes
EPIRB	yes
Navigation lights	yes

EQUIPMENT

Sprayhood	yes
Bimini	yes
Cockpit cushions	yes
Cockpit table	yes
Bathing platform	yes
Boarding ladder	stainless steel
Gangway	yes
Deck shower	yes
Anchor	Delta
Anchor chain	75m
Anchor 2	Danforth
Anchor chain	20m
Windlass	electrical
Dinghy	inflatable
Outboard	yes
Sea railing	stainless steel
Grab rail (superstructure)	stainless steel
Life raft	yes
Life raft (pers)	valise (or bag) 10
Last life raft survey	09.04.2024
Lifejackets	yes
Safety harness	yes
Lifebuoy	yes



BAVARIA 46 CRUISER

Horn	yes
Binocular	yes
Radar reflector	yes
Fenders	yes
Mooring lines	yes
Spare parts	yes
Tools	yes
Radio-cd player	yes
Cockpit speakers	yes
Speakers in salon	yes
Clock - barometer	yes
Fire extinguisher	yes
Latest extinguisher survey	14.02.2024
Extra info	OWNERS SINCE 2016
Extra info	ANTIFOULING EVERY YEAR

RIGGING

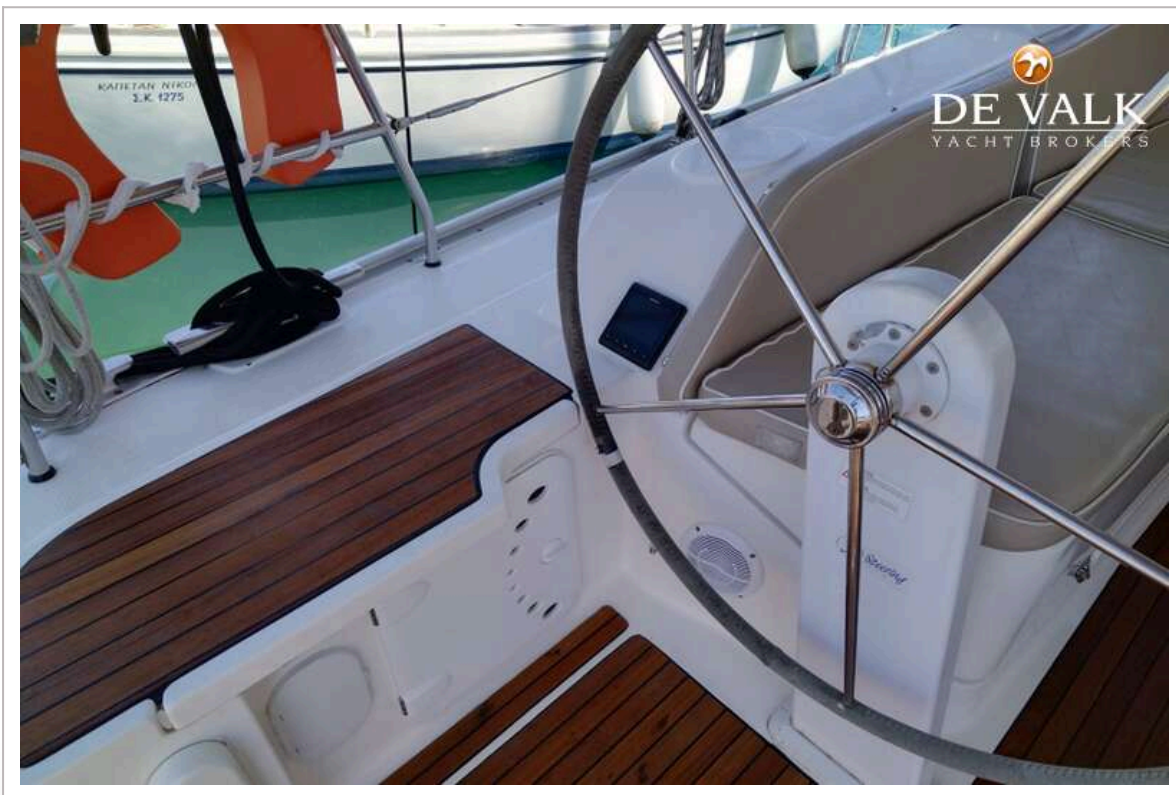
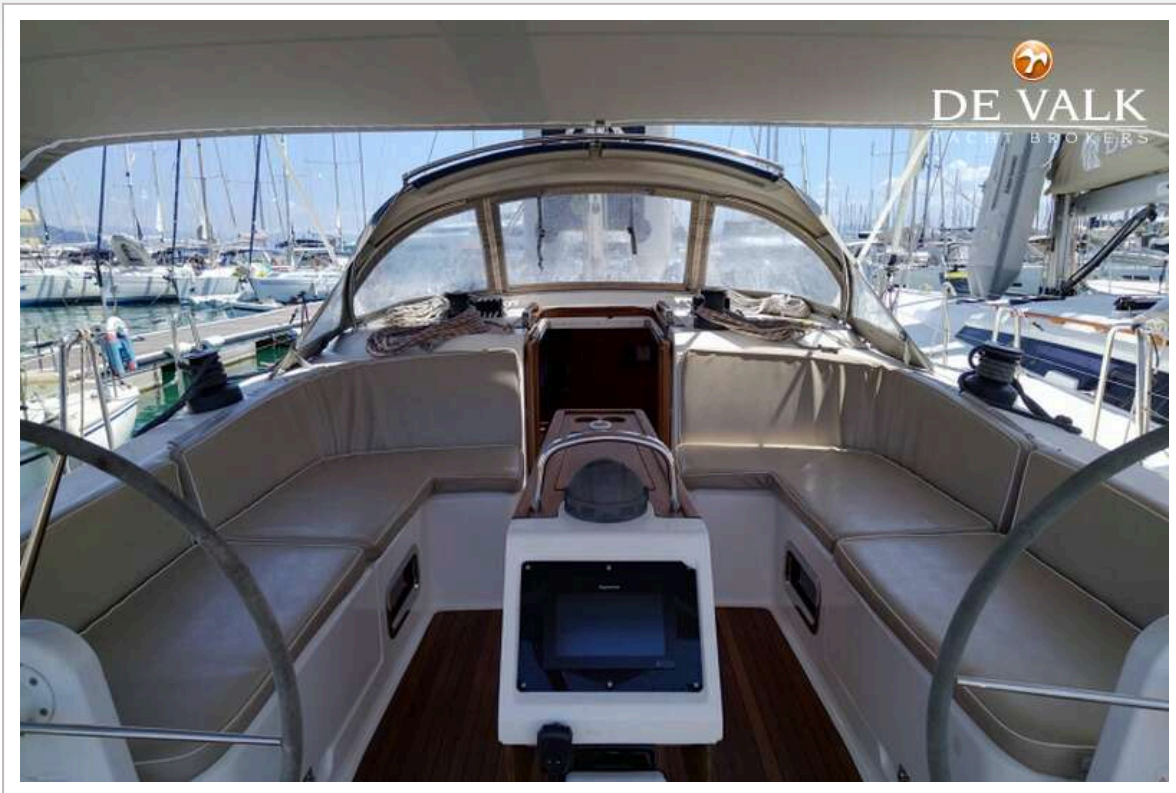
Standing rigging	wire
Brand mast	Seldén
Material mast	aluminium
Mainsail	NEW 2023, IN MAST FURLER
Genoa	NEW 2023, Furler
Stormjib	yes
Reefing System	main in-mast furling
Backstay adjuster	mechanical
Boomvang	mechanical and tackle
Genoa sheetwinches	yes
Multifunctional winches	halyard/sheet winches



BAVARIA 46 CRUISER



BAVARIA 46 CRUISER



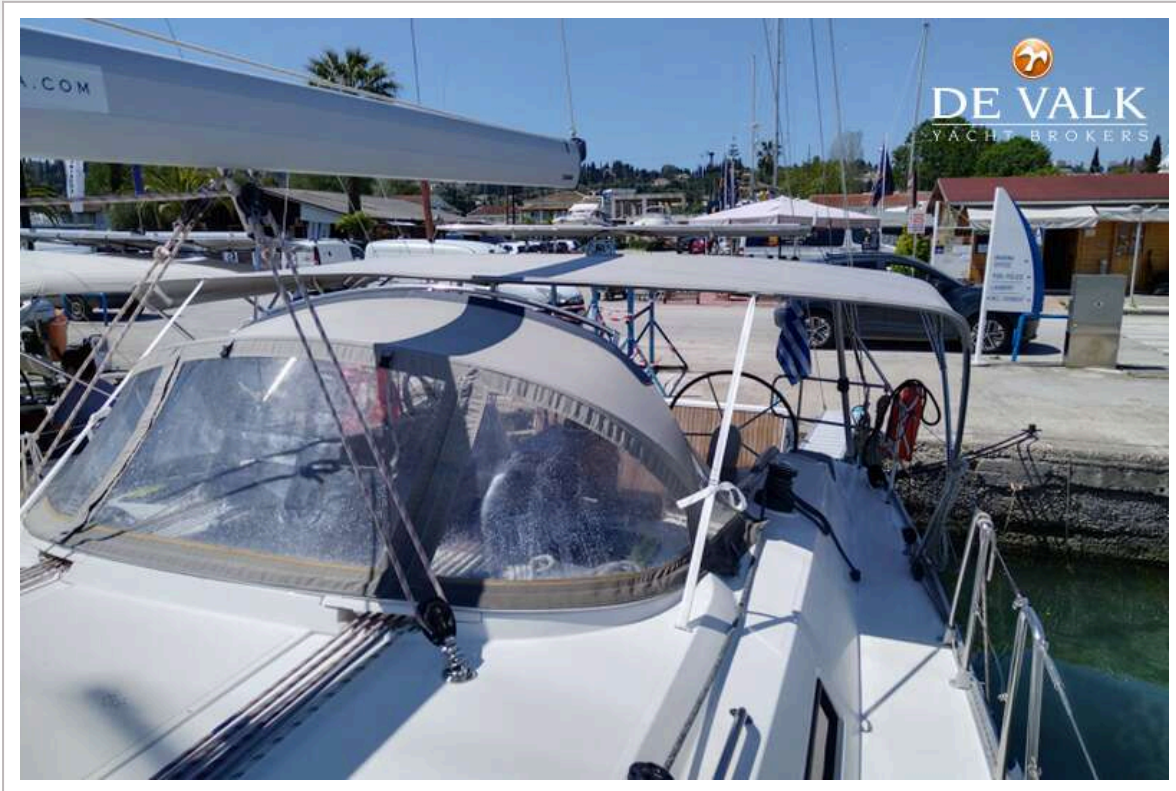
BAVARIA 46 CRUISER



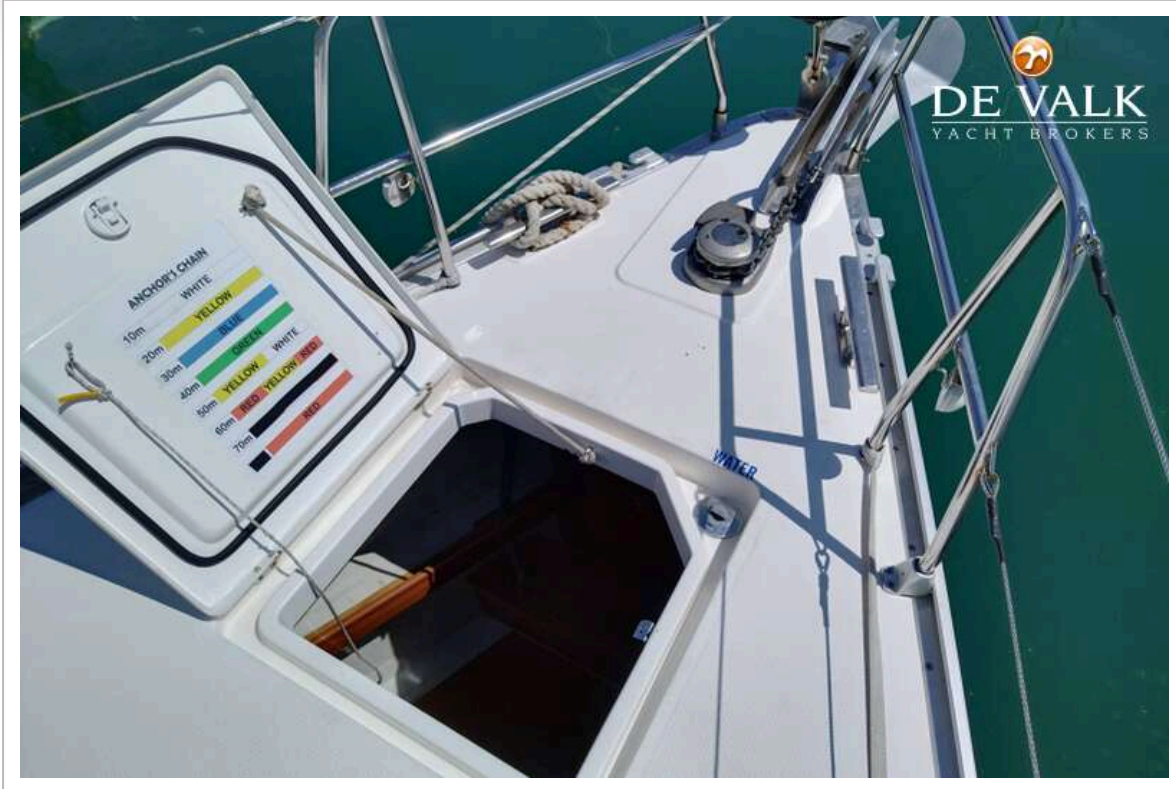
BAVARIA 46 CRUISER



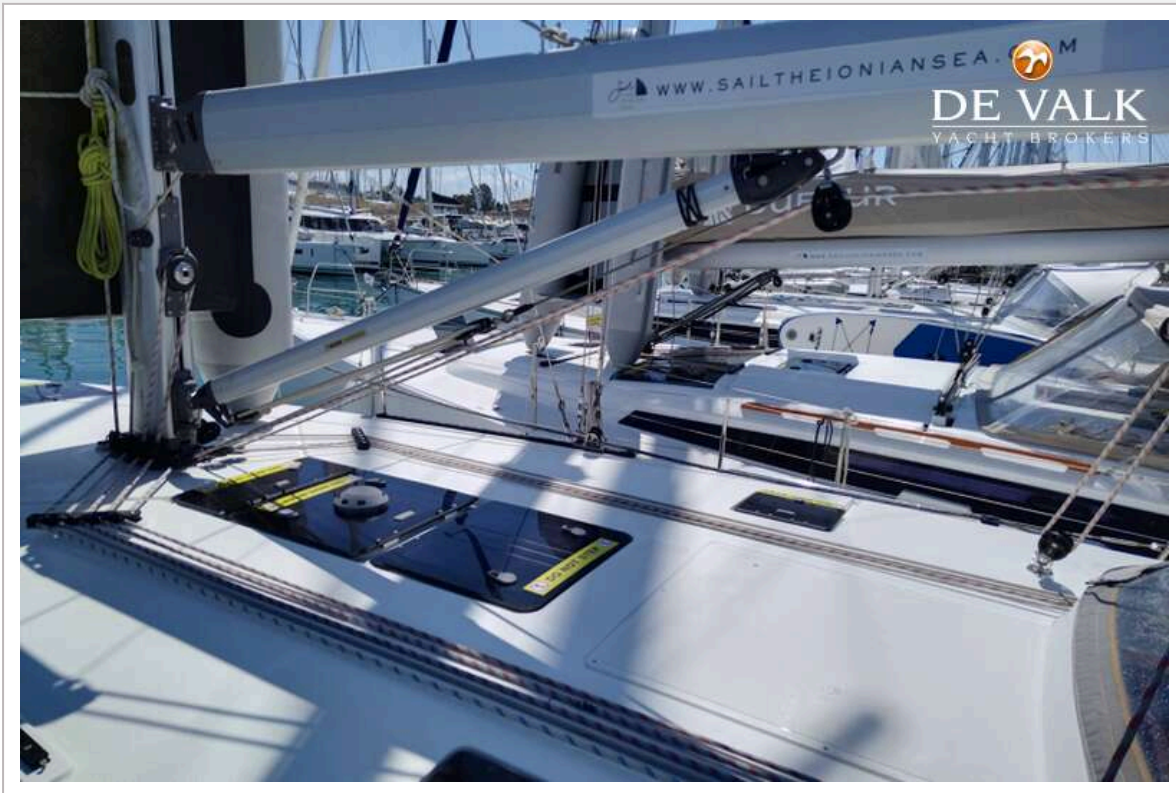
BAVARIA 46 CRUISER



BAVARIA 46 CRUISER



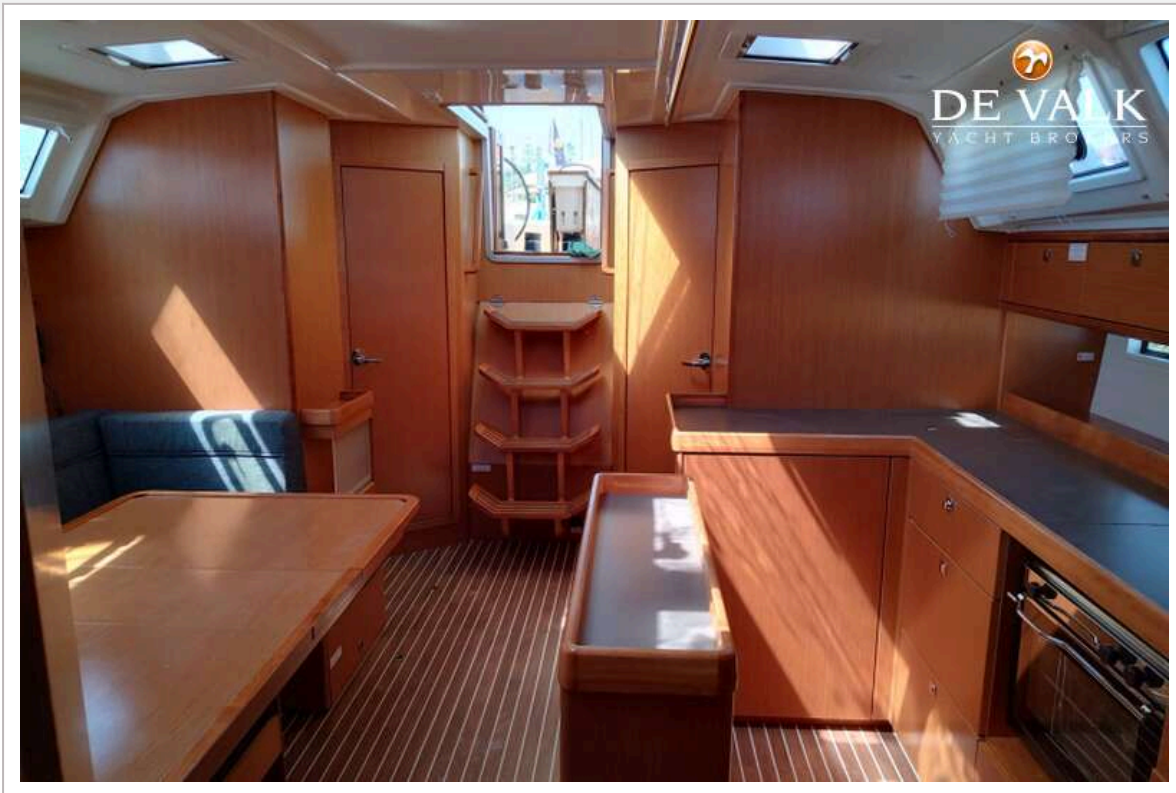
BAVARIA 46 CRUISER



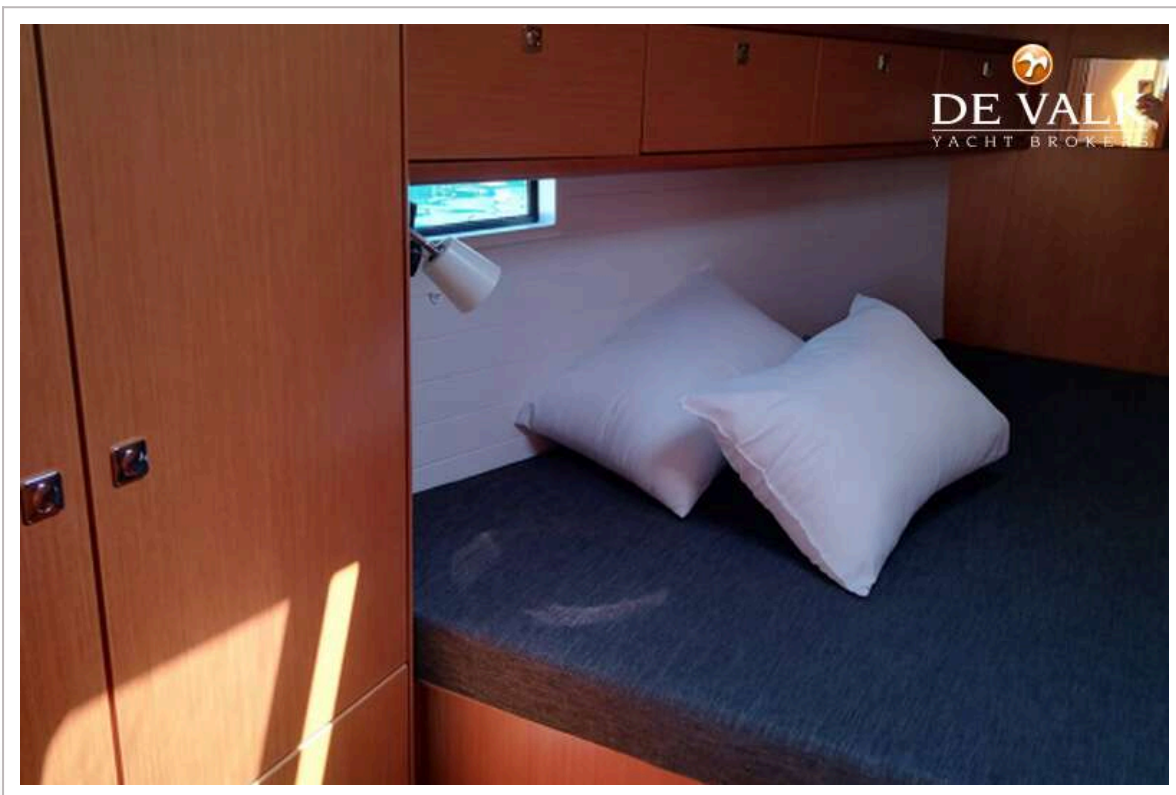
BAVARIA 46 CRUISER



BAVARIA 46 CRUISER



BAVARIA 46 CRUISER



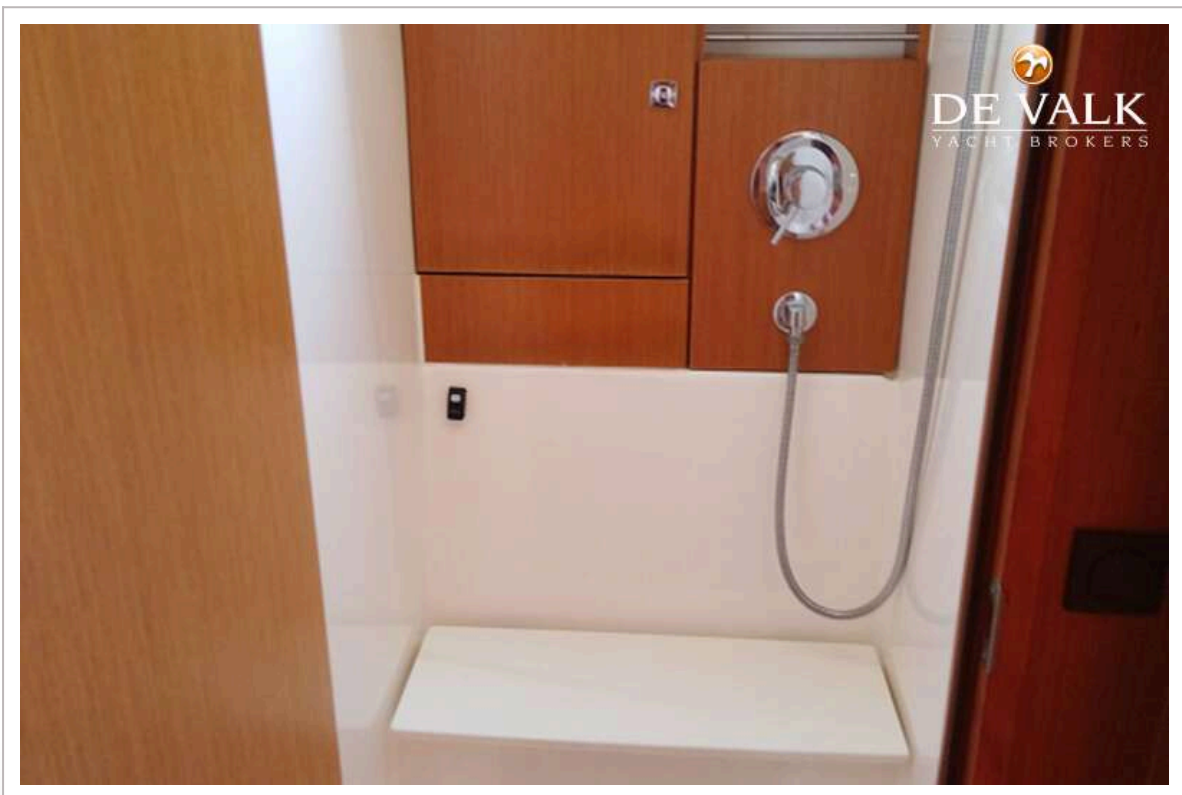
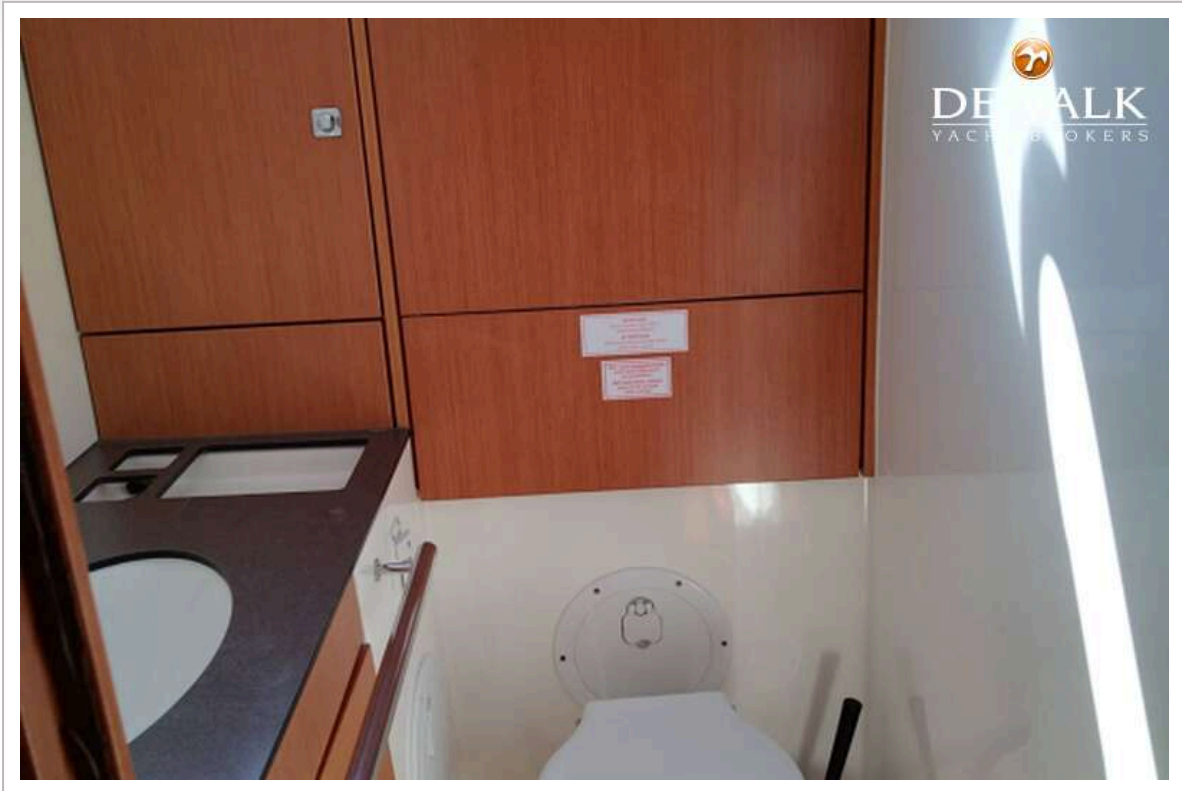
BAVARIA 46 CRUISER



BAVARIA 46 CRUISER



BAVARIA 46 CRUISER



BAVARIA 46 CRUISER

