



DE VALK
YACHT BROKERS



JOHNSON 56



DE VALK
YACHT BROKERS

BROKER'S COMMENTS

Owner remodelled the entire yacht from top to bottom. This yacht is in like new condition. Owner is selling to purchase a larger vessel All new electrical system. New electronics and audio, new carpet throughout, new wine cooler and appliances.

Mark Damen

SPECIFICATIONS

| | | | |
|---------------------|----------------------------|----------------|------------------------------|
| Dimensions | 17.02 x 4.80 x 1.30 (m) | Builder | Johnson |
| Built | 1999 | Cabins | 3 |
| Material | GRP | Berths | 6 |
| Engine(s) | 2 x MAN D2840 LE401 diesel | Hp/Kw | 2 x 600.00 (hp), 441.60 (kw) |
| Asking price | € 275.000 (VAT Paid) | Lying | at sales office |

CONTACT

| | | | |
|---------------------|--|------------------|-----------------------|
| Sales office | De Valk Costa del Sol | Telephone | +34951120059 |
| Address | Southern Spain Region Malaga Spain | E-mail | costadelsol@devalk.nl |

DISCLAIMER

These particulars are given in good faith as supplied but cannot be guaranteed.



GENERAL

| | |
|-------------------------|-----------------|
| Model | JOHNSON 56 |
| Type | motor yacht |
| LOA (m) | 17,02 |
| Beam (m) | 4,80 |
| Draft (m) | 1,30 |
| Year built | 1999 |
| Builder | Johnson |
| Country | Taiwan |
| Designer | Dixon |
| Hull material | GRP |
| Flybridge cockpit cover | yes |
| Flybridge suncover | yes |
| Radar arch | non collapsible |
| Fuel tank (litre) | 2271.1 |
| Fuel daytank (litre) | 378.1 |
| Freshwater tank (litre) | 757.1 |
| Wheel steering | yes |
| Inside helm position | yes |
| Outside helm position | yes |
| Flybridge helm position | yes |

ACCOMMODATION

| | |
|-------------------|--|
| Cabins | 3 |
| Berths | 6 |
| Aft deck | yes |
| Deck saloon | yes |
| Air-conditioning | reverse cycle airco Every cabin & Saloon |
| Navigation center | yes |
| Aft Cabin | yes |
| Dinette | yes |



| | |
|--------------------------|--------------------------|
| Opening door to aft deck | yes |
| Galley | yes |
| Countertop | yes |
| Sink | yes |
| Cooker | yes |
| Oven | yes |
| Microwave | All new Appliances |
| Fridge | yes |
| Freezer | yes |
| Wine cooler | yes |
| Hot water system | yes |
| Water pressure system | yes |
| Dishwasher | yes |
| Owners cabin | double bed |
| Wardrobe | yes |
| Bathroom | yes |
| Toilet system | electric New Silent Flow |
| Wash basin | yes |
| Shower | yes |
| Guest cabin 1 | double bed |
| Wardrobe | yes |
| Toilet system | electric New Silent Flow |
| Wash basin | yes |
| Shower | yes |
| Guest cabin 2 | twin single |
| Bathroom | yes |
| Toilet system | New Silent Flow |
| Wash basin | yes |
| Shower | yes |
| Flybridge | yes |



MACHINERY

| | |
|---------------------------------|--|
| No of engines | 2 |
| Make | MAN |
| Type | D2840 LE401 |
| HP | 600 |
| kW | 441.60 |
| Fuel | diesel |
| Year installed | 1999 |
| Year of overhaul | 2024 |
| Maximum speed (kn) | 29 |
| Cruising speed (kn) | 22 |
| Engine hours | 900 |
| Bowthruster | yes |
| Manual bilge pump | One manual |
| Electric bilge pump | Five 5 electric Bilge pumps |
| Generator | Whisper Power Piccolo 8kva |
| Battery charger/inverter | Victron Energy 3000w Inverter |
| Shorepower | Victron Energy Cerbo Power management System/online monitoring |
| Trimtabs | yes |

NAVIGATION

| | |
|------------------------------|------------------------------------|
| Compass | Ritchie |
| Compass on flybridge | Ritchie |
| Multi control display | yes |
| Depth sounder | yes |
| VHF | Simrad VHF/AIS RS100 |
| Autopilot | Simard NAC-3 2x AP44 Displays |
| Radar | Simrad Halo 24 Radar |
| GPS | yes |
| Plotter/GPS | 2x Simrad NSS 1cwv03s GPS Plotters |



| | |
|-------------------|--|
| Weather receiver | Airmar 120WX Weatherstation |
| PC connection | yes |
| Wifi antenna | yes |
| AIS receiver | yes |
| EPIRB | EPRIBB1 Ocean Signal |
| Camera | Sionyx Nightvision Camera |
| Navigation lights | yes |
| Searchlight | yes |
| Extra info | Starlink Internet Isotherm Electrical Boilier |
| Extra info | All electronics integrated to NMEA2000 Network 2x Simard Instrument Displays |

EQUIPMENT

| | |
|----------------------------|---------------------------------|
| Fixed windscreen | yes |
| Bimini | yes |
| Window cover | New 2024 |
| Cockpit cushions | yes |
| Cockpit table | yes |
| Cockpit chairs | yes |
| Bathing platform | yes |
| Boarding ladder | yes |
| Gangway | Remote |
| Anchor | Delta Lewmar |
| Anchor chain | All new 70m stainless |
| Windlass | electrical |
| Dinghy | rigid inflatable Hitchfield 310 |
| Outboard | yes |
| Grab rail (superstructure) | yes |
| Pulpit | yes |
| Life raft | New Plastimo Coastal with EPRIB |
| Life raft (pers) | 8 |



| | |
|------------------------------|---|
| Last life raft survey | 2024 |
| Lifejackets | Eight |
| Wiper | yes |
| Horn | yes |
| Radar reflector | yes |
| Fenders | yes |
| Mooring lines | yes |
| Spare parts | yes |
| Tools | yes |
| TV | 2X LED TV's !x new TV Saloon w Lift |
| Radio | Fusion Audio System 10 speakers 3 zones |
| Cockpit speakers | yes |
| Speakers in salon | yes |
| Speakers in cabin | yes |
| Fire extinguisher | 6 manual handheld |
| Extra info | Underwater Lighting |



JOHNSON 56



JOHNSON 56



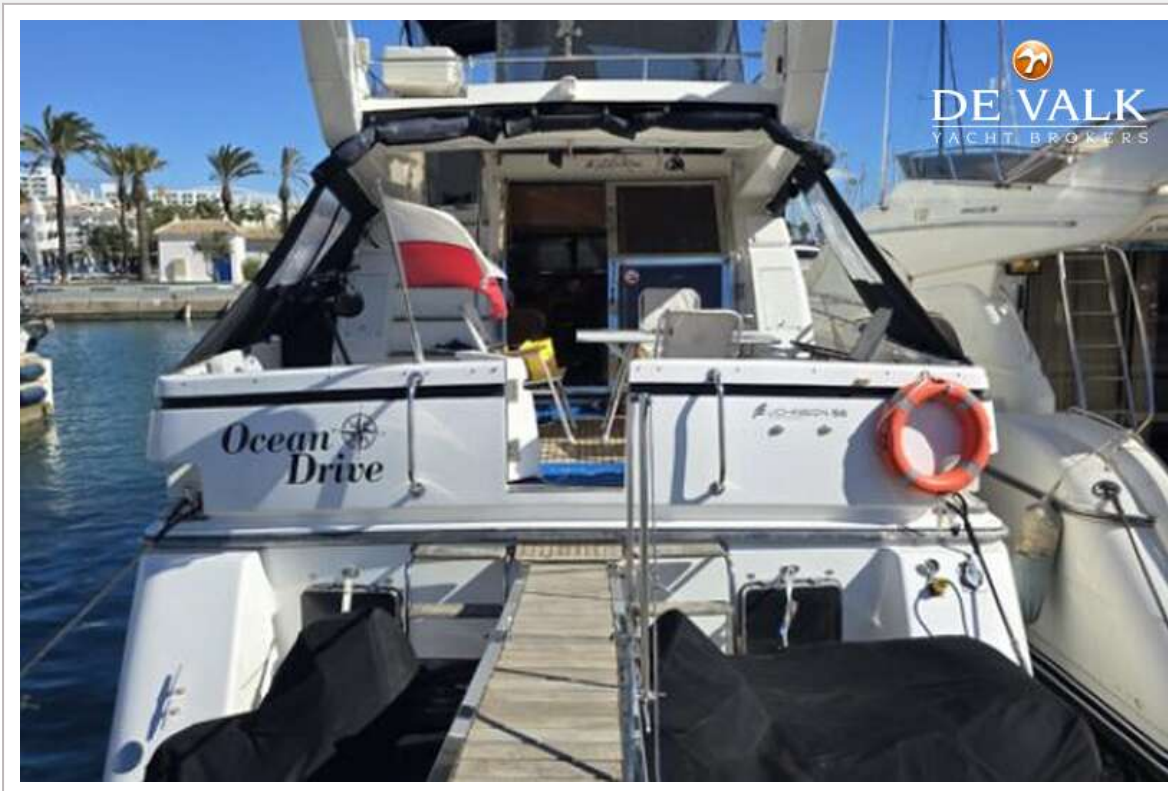
JOHNSON 56



JOHNSON 56



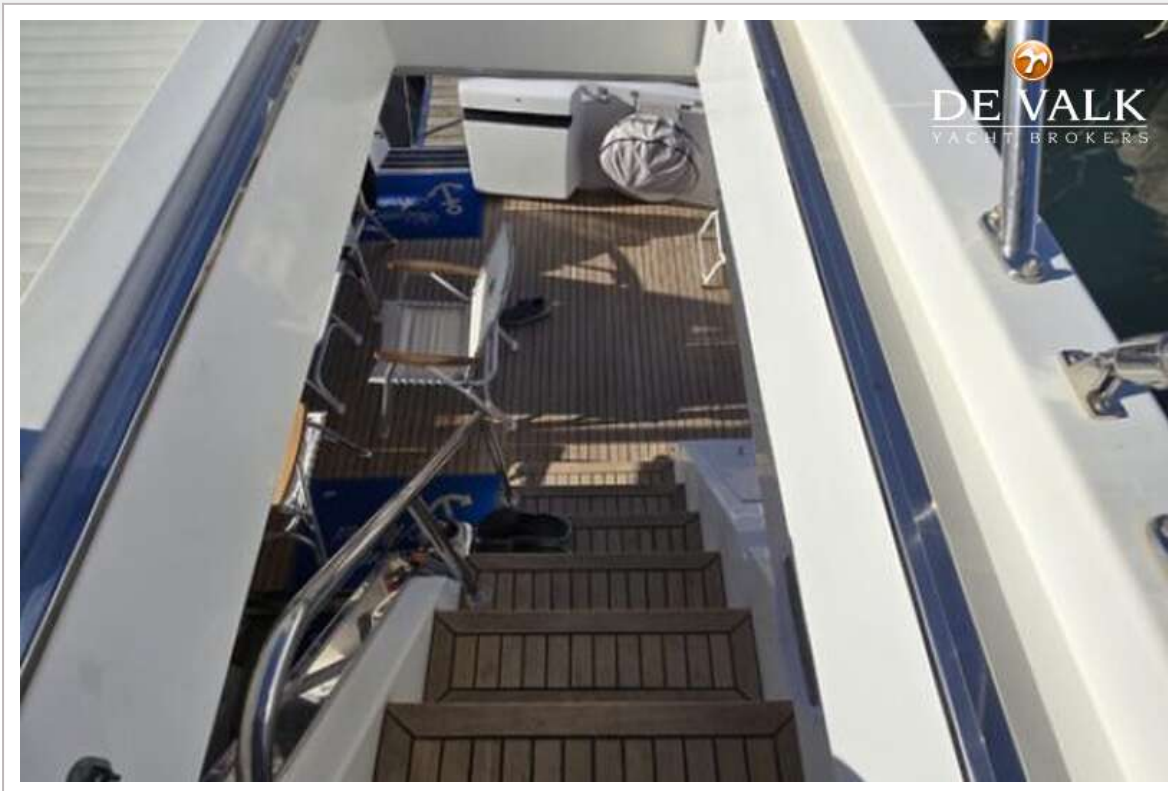
JOHNSON 56



JOHNSON 56



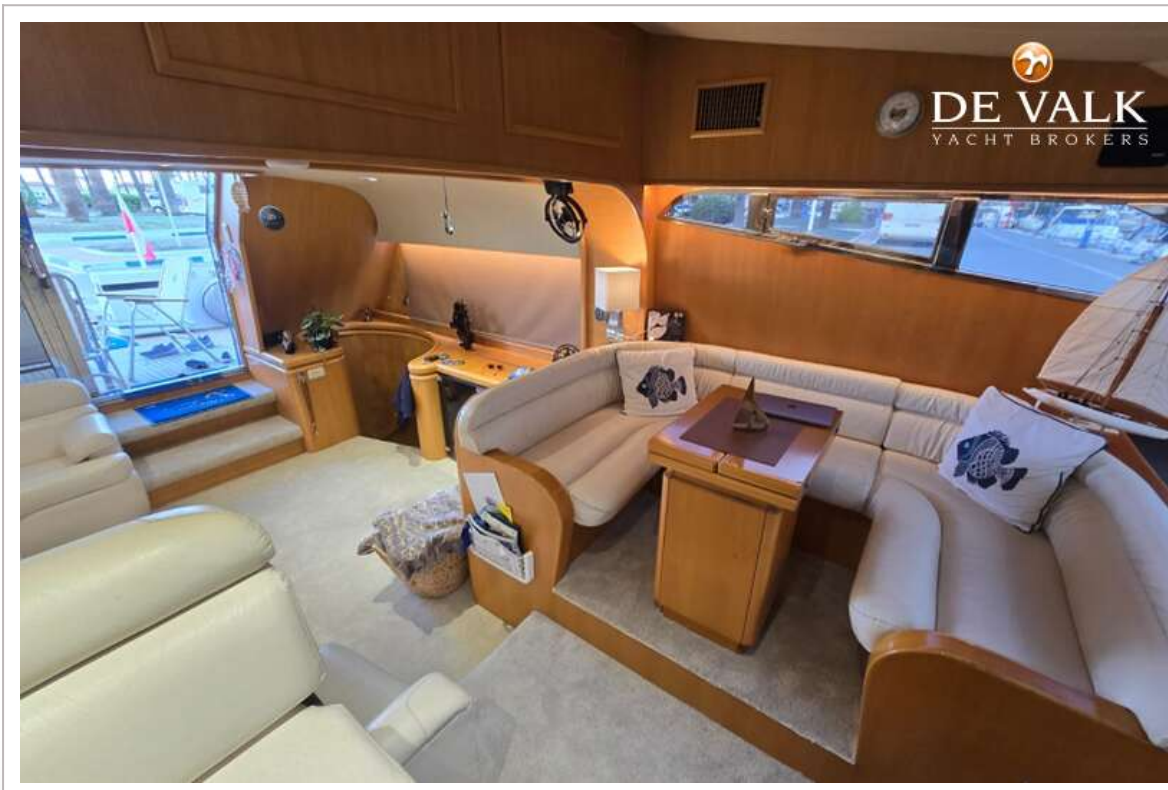
JOHNSON 56



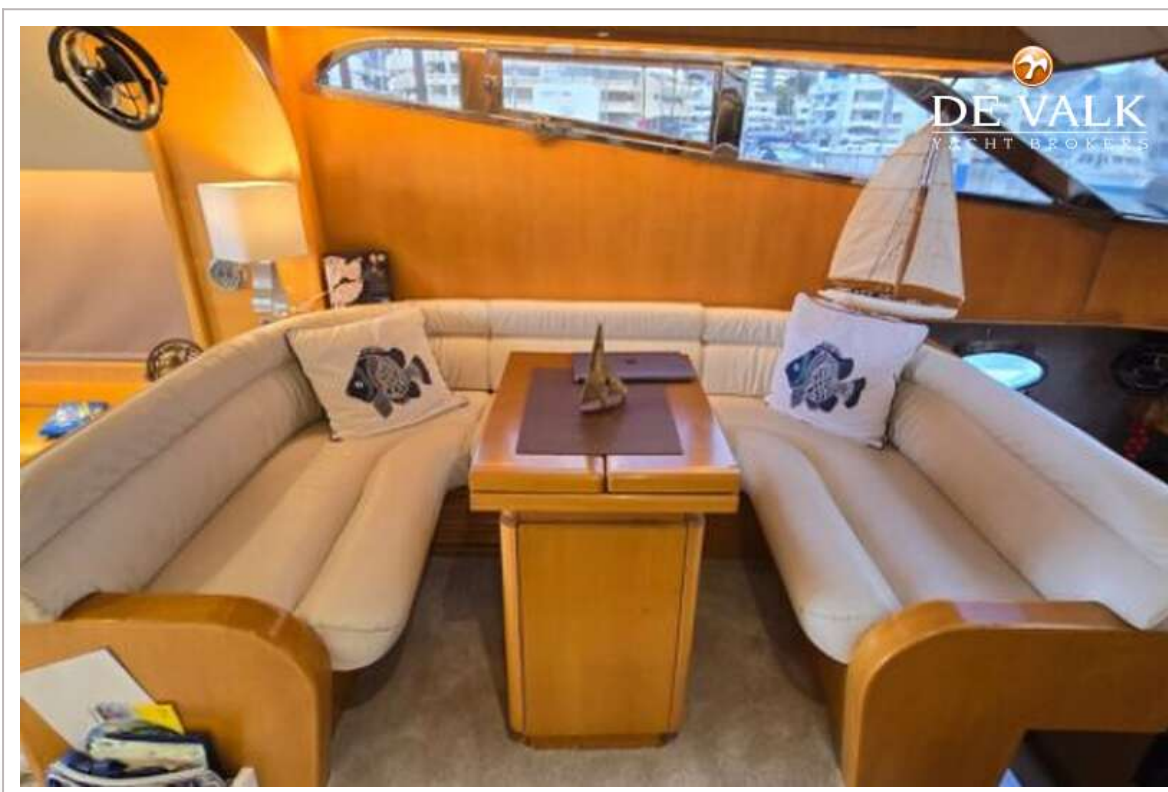
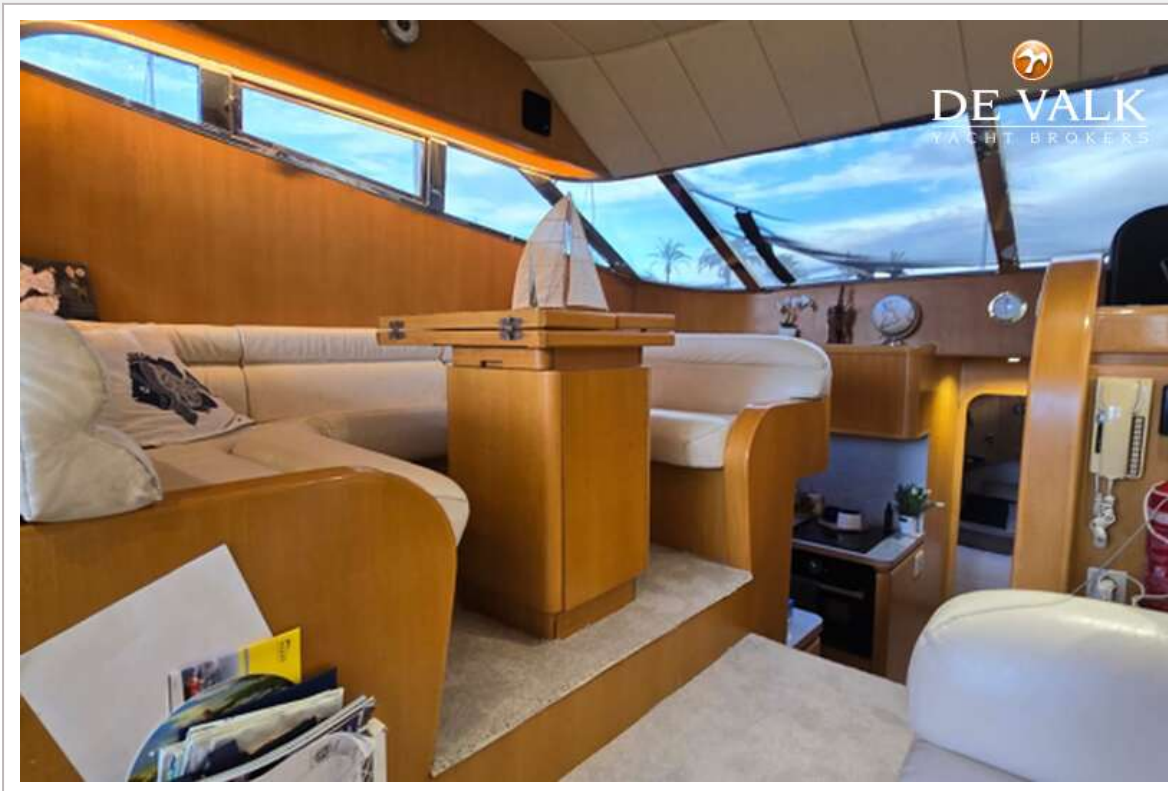
JOHNSON 56



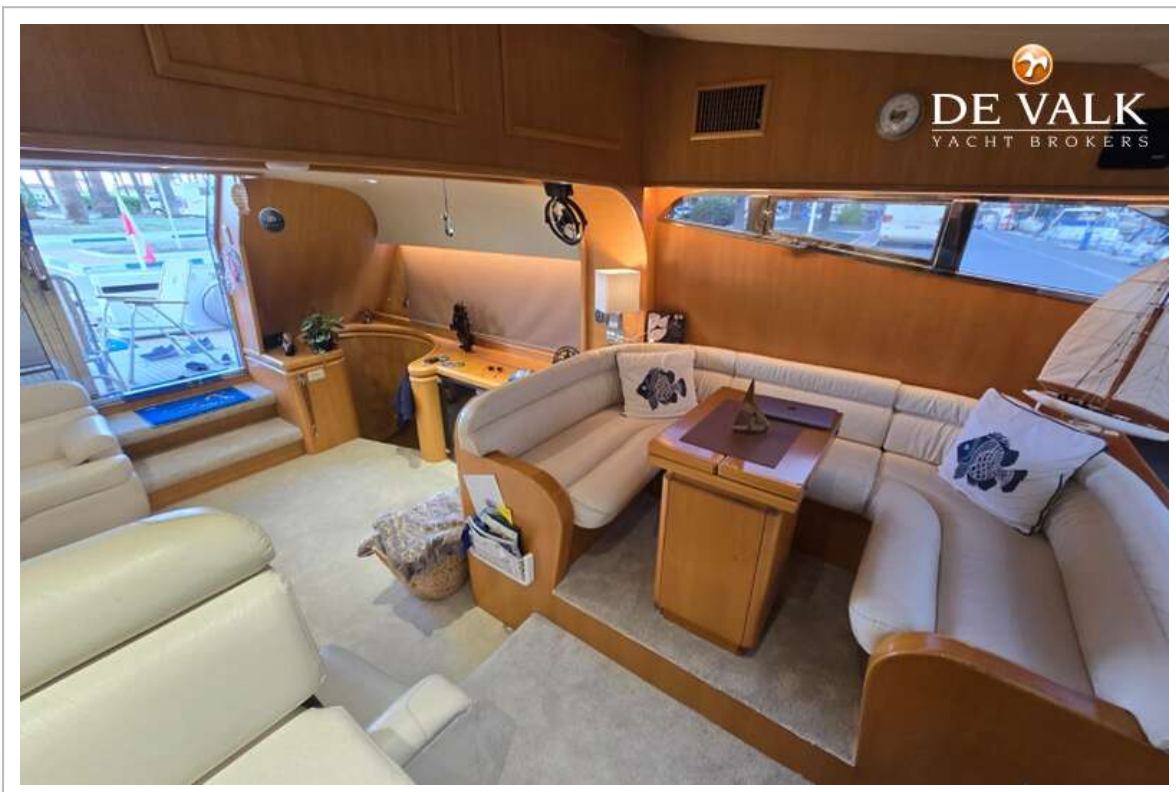
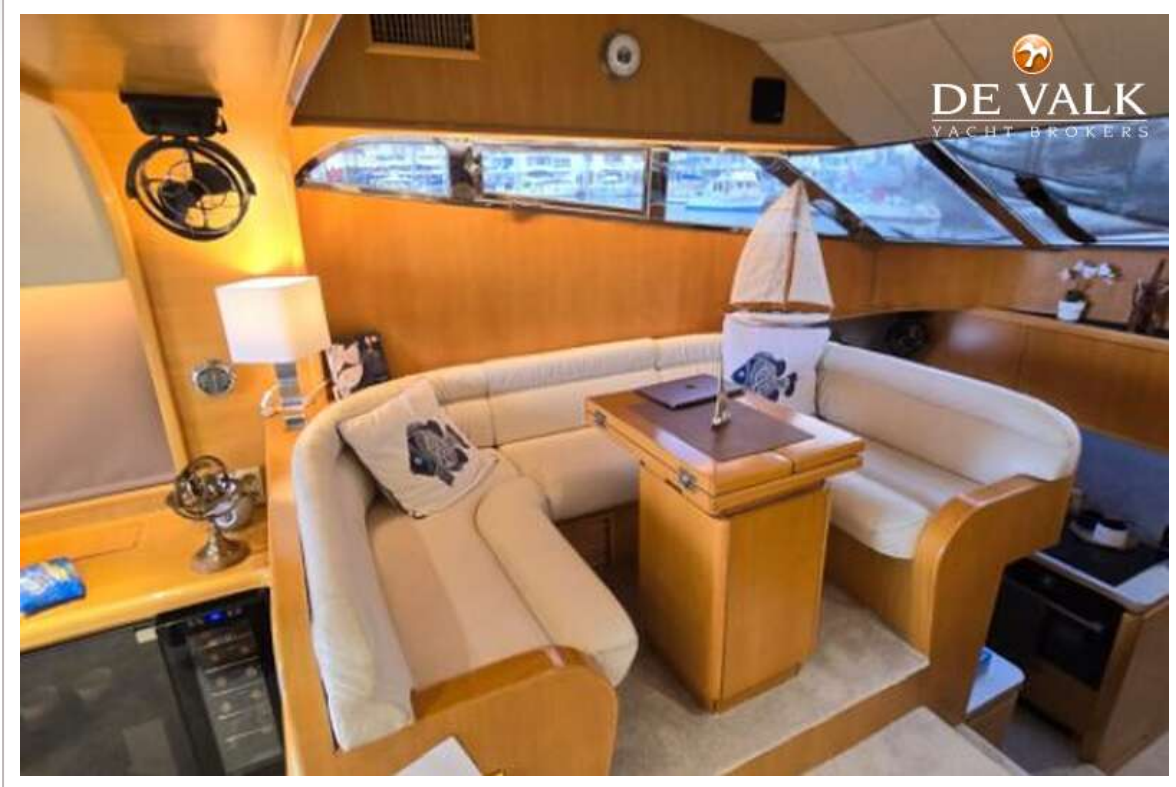
JOHNSON 56

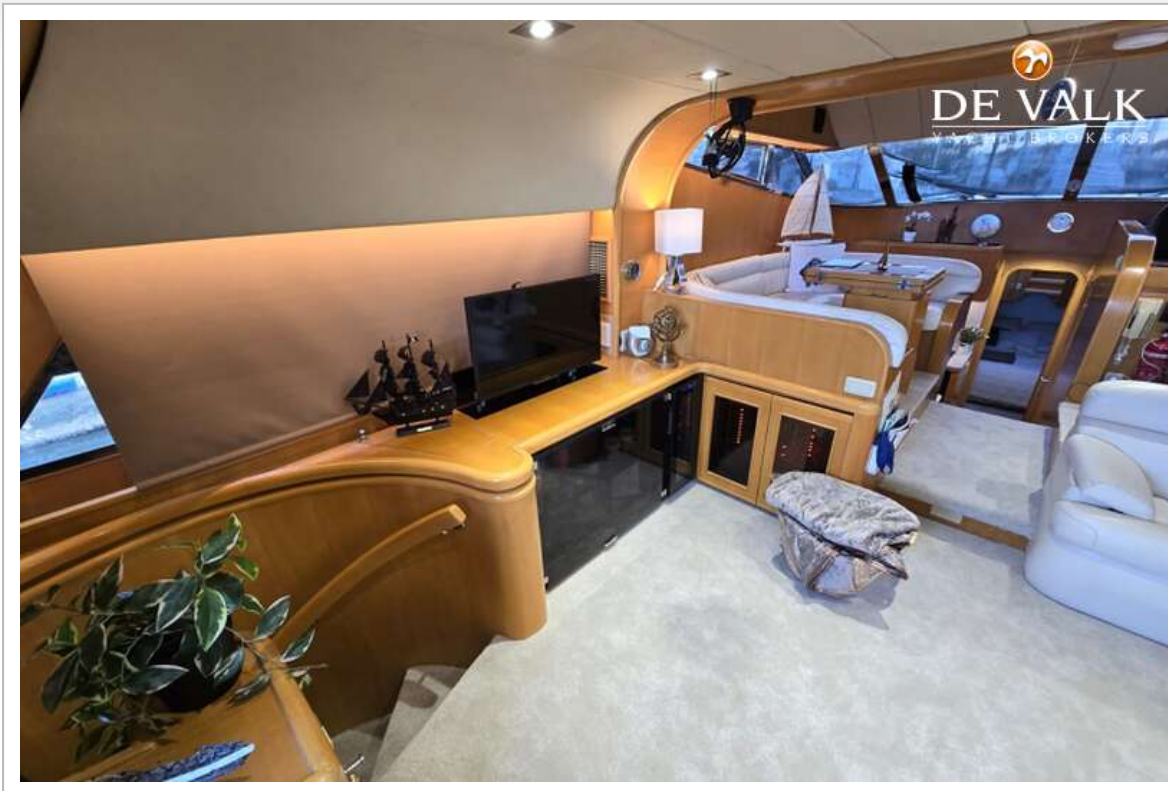


JOHNSON 56

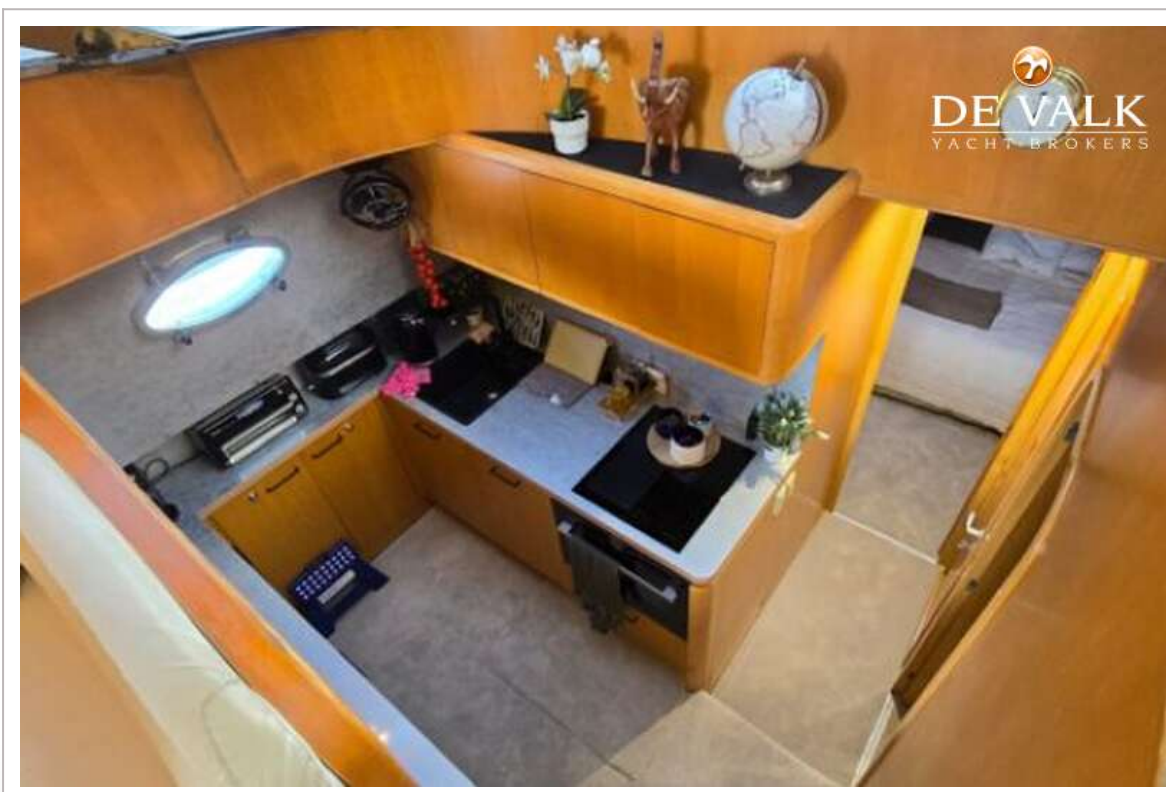
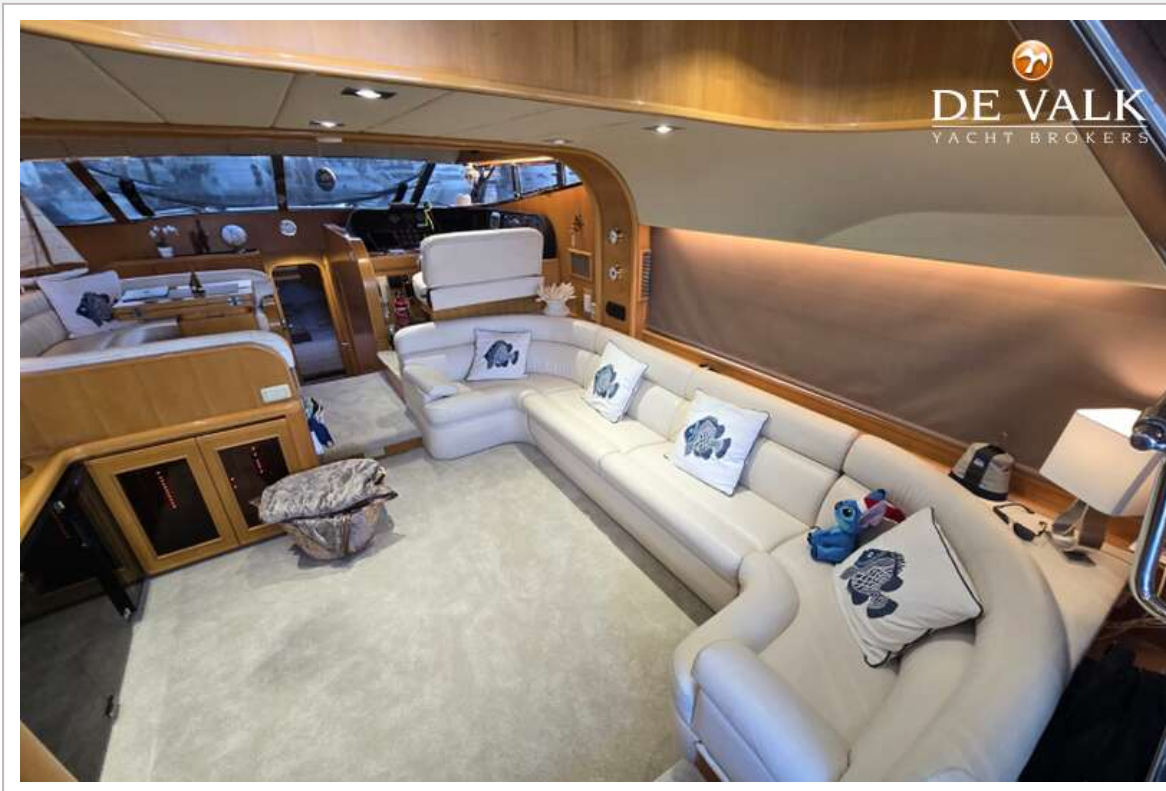


JOHNSON 56

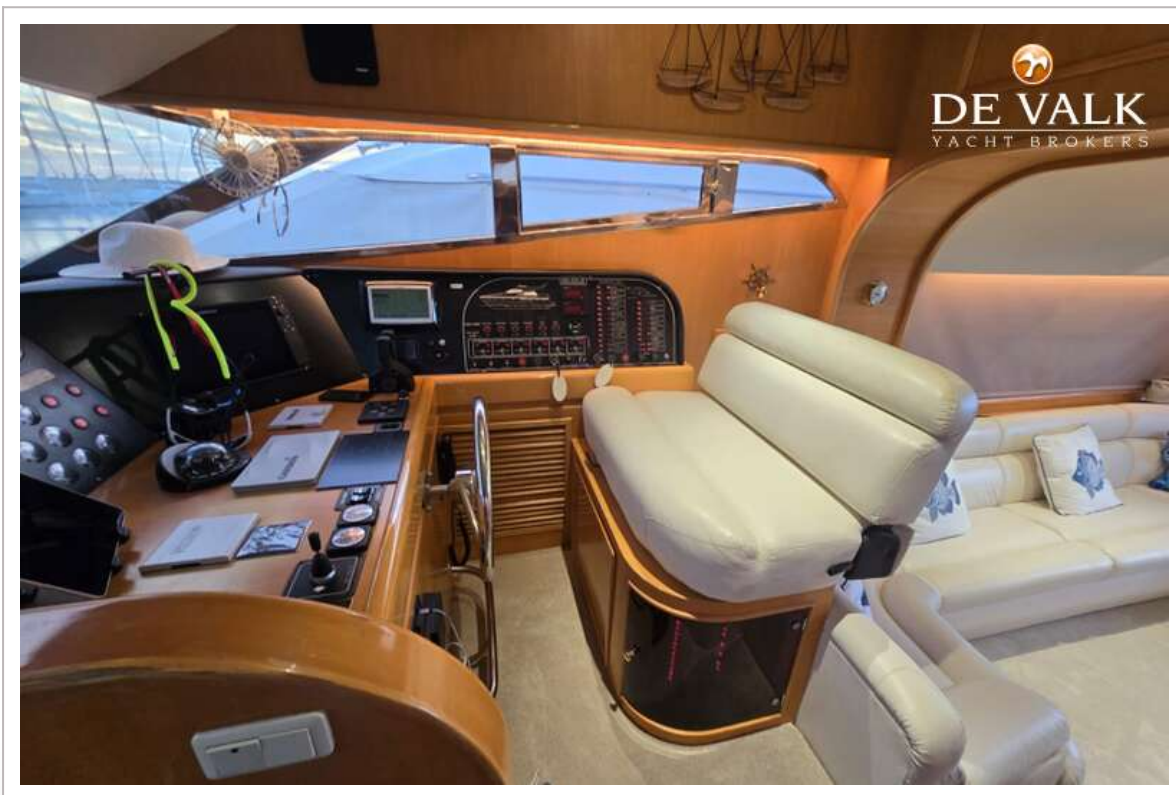




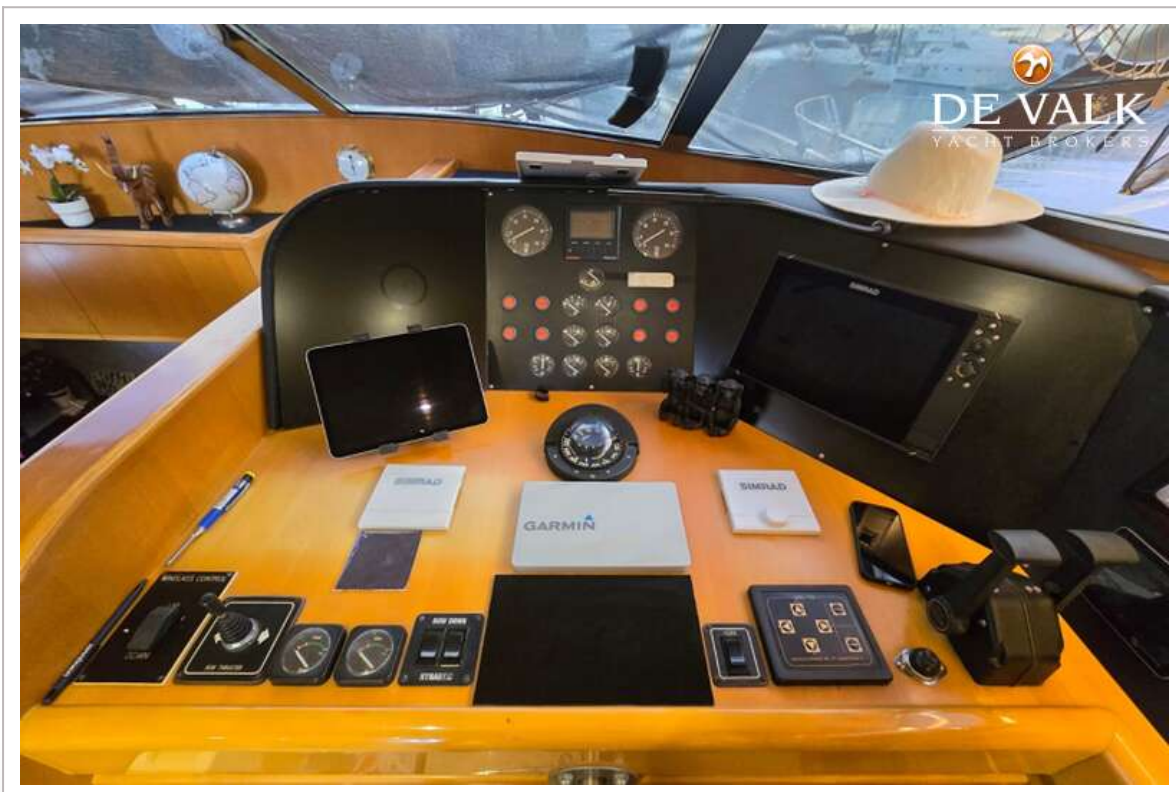
JOHNSON 56



JOHNSON 56



JOHNSON 56



JOHNSON 56





