



DE VALK
YACHT BROKERS



OYSTER 37



DE VALK
YACHT BROKERS

OYSTER 37

BROKER'S COMMENTS

Designed by Holman and Pye to the IOR rules, the Oyster 37 is a cruiser / racer which is especially fast to windward, comparing favourably with many more modern designs. Spacious accommodation and classic IOR looks make this yacht ideal for racing and cruising. Built and equipped to a high standard by the well-known British boat builder Richard Jordan, this is a classic in the making just waiting for the right owner to bring it back to life. A surveyor's report from 2024 is available on request.

Robert Corden

SPECIFICATIONS

Dimensions	11.28 x 3.71 x 1.85 (m)	Builder	Richard Jordan (Boatbuilders) Ltd.
Built	1979	Cabins	1
Material	GRP	Berths	7
Engine(s)	1 x Perkins 4.108 diesel	Hp/Kw	48.00 (hp), 35.33 (kw)
Asking price	€ 29.500 (VAT Paid)	Lying	at sales office

CONTACT

Sales office	De Valk Ibiza	Telephone	+34 634 342 444
Address	Carrer del Pedrer 4, Ca Na Palava 07814 Santa Eulalia, Balears Spain	E-mail	ibiza@devalk.nl

DISCLAIMER

These particulars are given in good faith as supplied but cannot be guaranteed.



OYSTER 37

GENERAL

Model	OYSTER 37
Type	sailing yacht
LOA (m)	11,28
Beam (m)	3,71
Draft (m)	1,85
Year built	1979
Launched	1979
Builder	Richard Jordan (Boatbuilders) Ltd.
Country	United Kingdom
Designer	Holman and Pye
Displacement (t)	7,4
Hull material	GRP
Hull colour	blue
Keel type	fin keel
Superstructure material	GRP
Deck material	GRP
Deck finish	teak In need of repair
Superstructure deck finish	teak In need of repair
Cockpit deck finish	teak In need of repair
Antifouling (year)	Unknown
Window material	perspex
Deckhatch	yes
Fuel tank (litre)	stainless steel 132
Level indicator (fuel tank)	Gauge at chart table
Freshwater tank (litre)	stainless steel 190
Level indicator (freshwater)	Gauge at chart table
Wheel steering	cable steering
More info on hull	Gelcoat in need of repair and polish

ACCOMMODATION



OYSTER 37

Cabins	1
Berths	7
Crew berths	2 x pipe cots
Interior	teak
Floor	teak
Headroom saloon (m)	1.95
Chart table	yes
Aft Cabin	Quarter berth
Dinette to convert into berth	yes
Galley	yes
Countertop	plastic
Sink	stainless steel
Cooker	calor gas
Oven	Force 10 with gimbal
Fridge	Engel 12V with small freezer compartment
Hot water system	by engine
Water pressure system	electrical
Owners cabin	v-bed
Wardrobe	hanging and shelves
Bathroom	shared
Toilet	shared
Toilet system	manual
Wash basin	in the bathroom
Shower	shared Pull out from basin

MACHINERY

No of engines	1
Make	Perkins
Type	4.108
HP	48
kW	35.33



OYSTER 37

Fuel	diesel
Maximum speed (kn)	7,5
Cruising speed (kn)	6
Engine hours	2338
Engine cooling system	freshwater heat exchanger
Drive	shaft
Shaft seal	yes
Engine controls	mechanical
Propeller type	feathering
Propeller blades	3
Manual bilge pump	yes
Electric bilge pump	yes
Electrical installation	12V DC
Batteries	2 but need to be replaced

NAVIGATION

Compass	Richie
Depth sounder	Brookes and Gatehouse
Log	Brookes and Gatehouse
Windset	Brookes and Gatehouse
Repeater	yes
VHF	Sailor and Lowrance
VHF handheld	Icom
Autopilot	Raytheon
Plotter/GPS	Simrad CXZ34
Weather receiver	Nasa
EPIRB	Simrad EG50
Navigation lights	yes

EQUIPMENT

Boarding ladder	stainless steel
-----------------	-----------------



Anchor	CQR Plough 35lb galvanised
Anchor chain	30m 8mm galvanised
Pushpit	Stainless steel
Pulpit	Stainless steel
Life raft	valise (or bag) 6 man
Last life raft survey	2014
Rope cutter	yes
Radio-cd player	JVC
Clock - barometer	On forward saloon bulkhead
Fire extinguisher	yes
Extinguisher in engine room	yes
Auto extinguisher system	yes
Extra info	Extinguishers may need to be replaced

RIGGING

Standing rigging	wire 1 x 19 strand stainless steel
Brand mast	Kemp
Material mast	aluminium
Spreaders	2 pairs
Keel stepped mast	yes
Mainsail	Hood
Genoa	Hood
Genoa I	Hood
Genoa II	Hood
Genoa III	Hood
Genoa furler	Furlex
Spinnaker	Main and reaching
Stormjib	Hood
Reefing System	slabreefing
Backstay adjuster	hydraulic
Boomvang	mechanical



Genoa sheetwinches	2 x Lewmar 55 2 speed self-tailing
Halyard winches	1 x Lewmar 16
Spinnaker winch	2 x Lewmar 43
Multifunctional winches	halyard/sheet winches 2 x Lewmar 40, 4 x Lewmar 30, 3 x Lewmar 16
Spi-pole	aluminium
Extra info	Hydraulic babystay



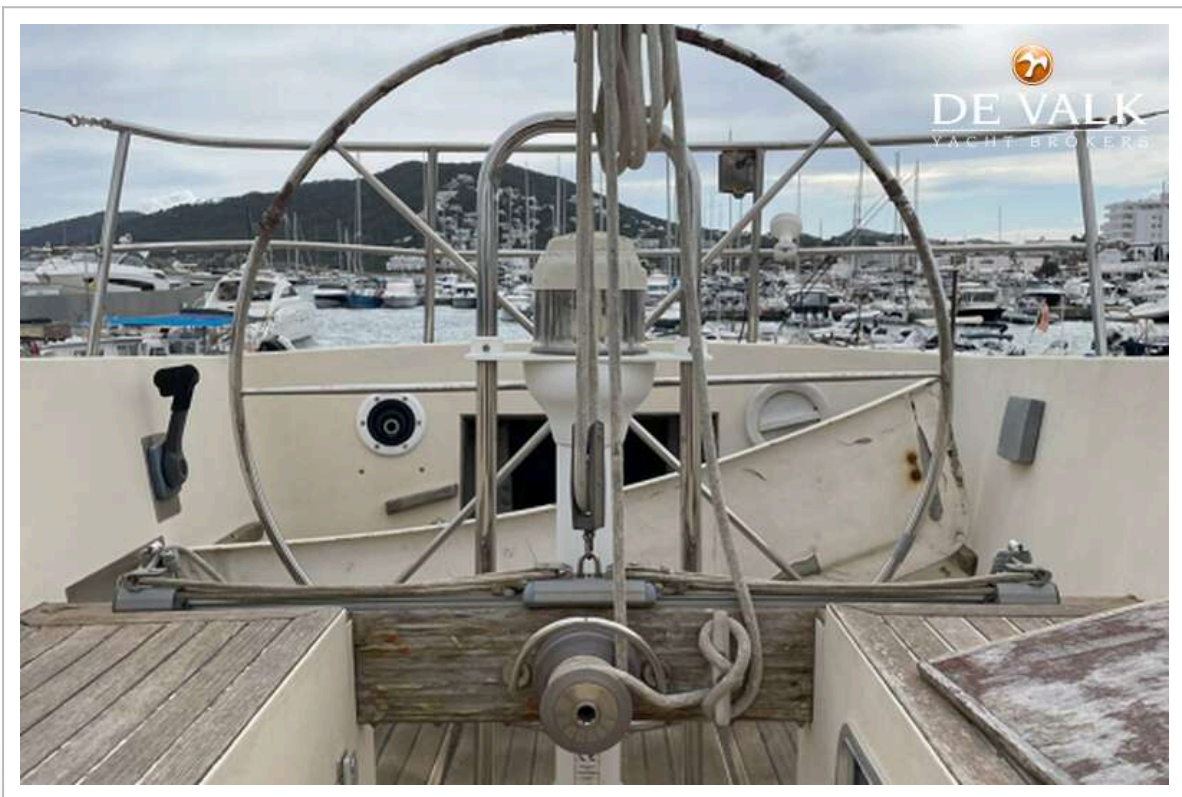
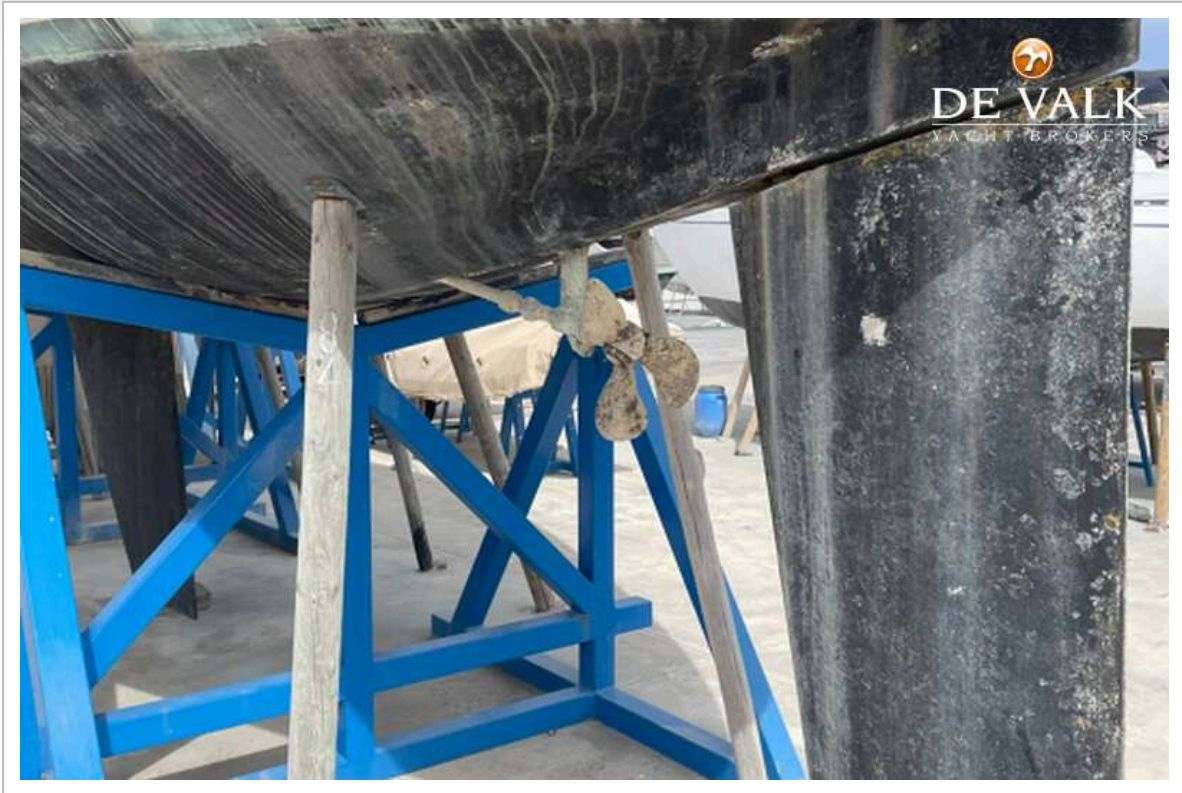
OYSTER 37



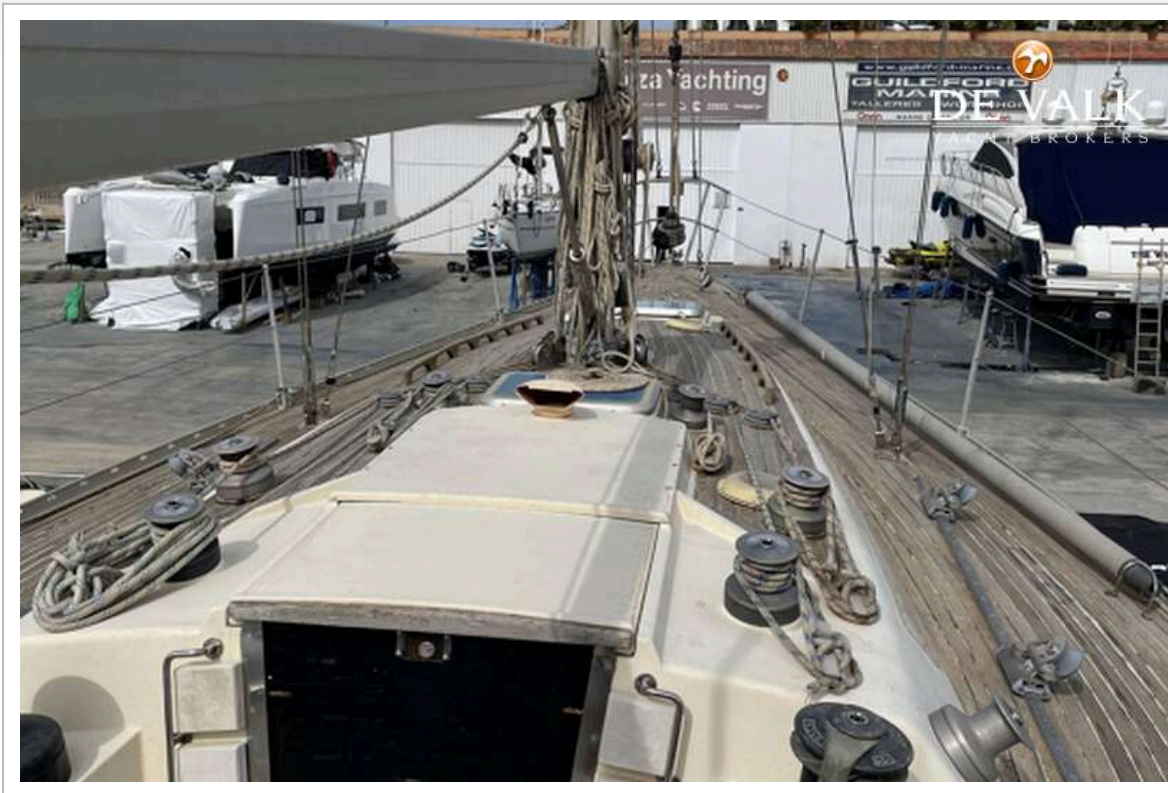
OYSTER 37



OYSTER 37



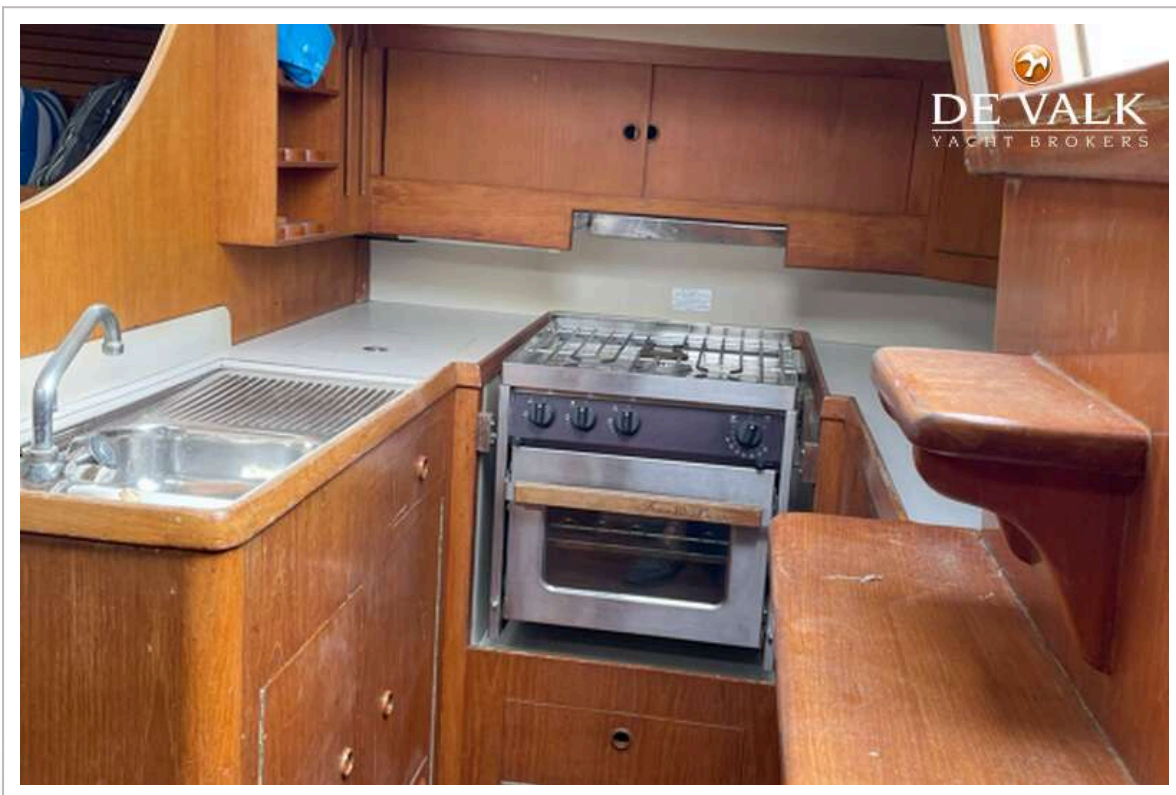
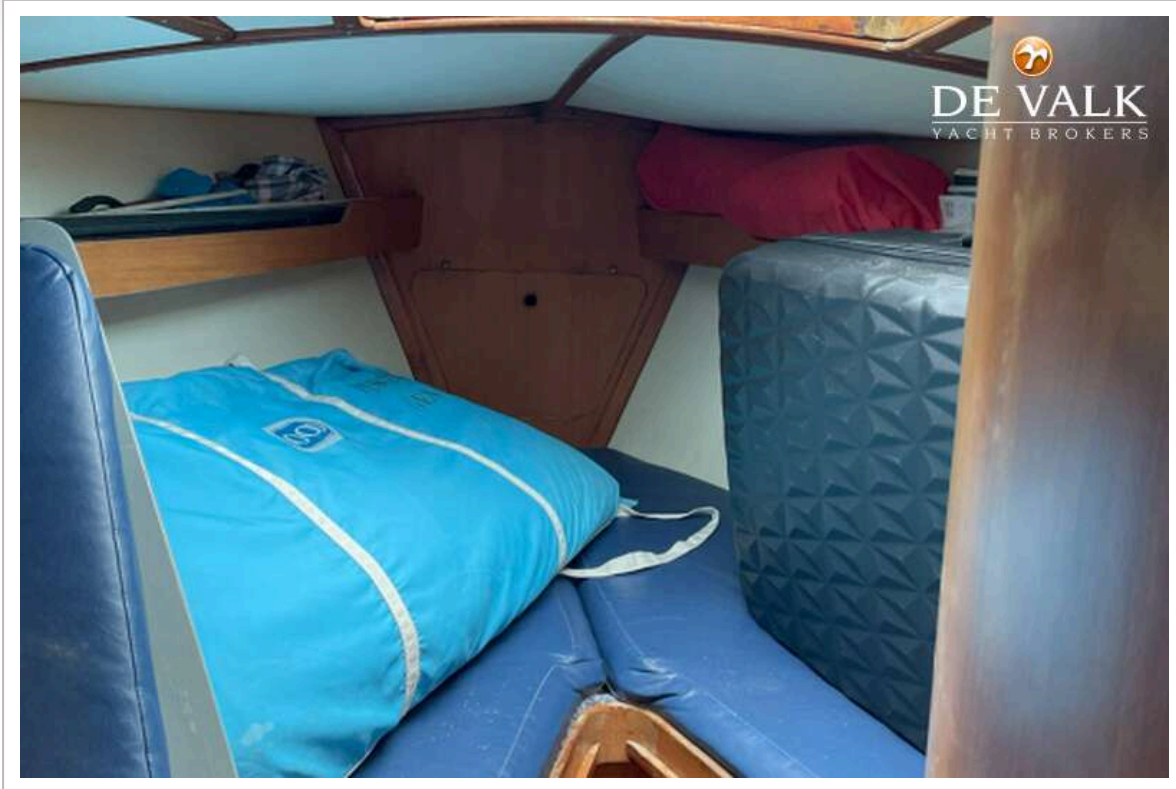
OYSTER 37



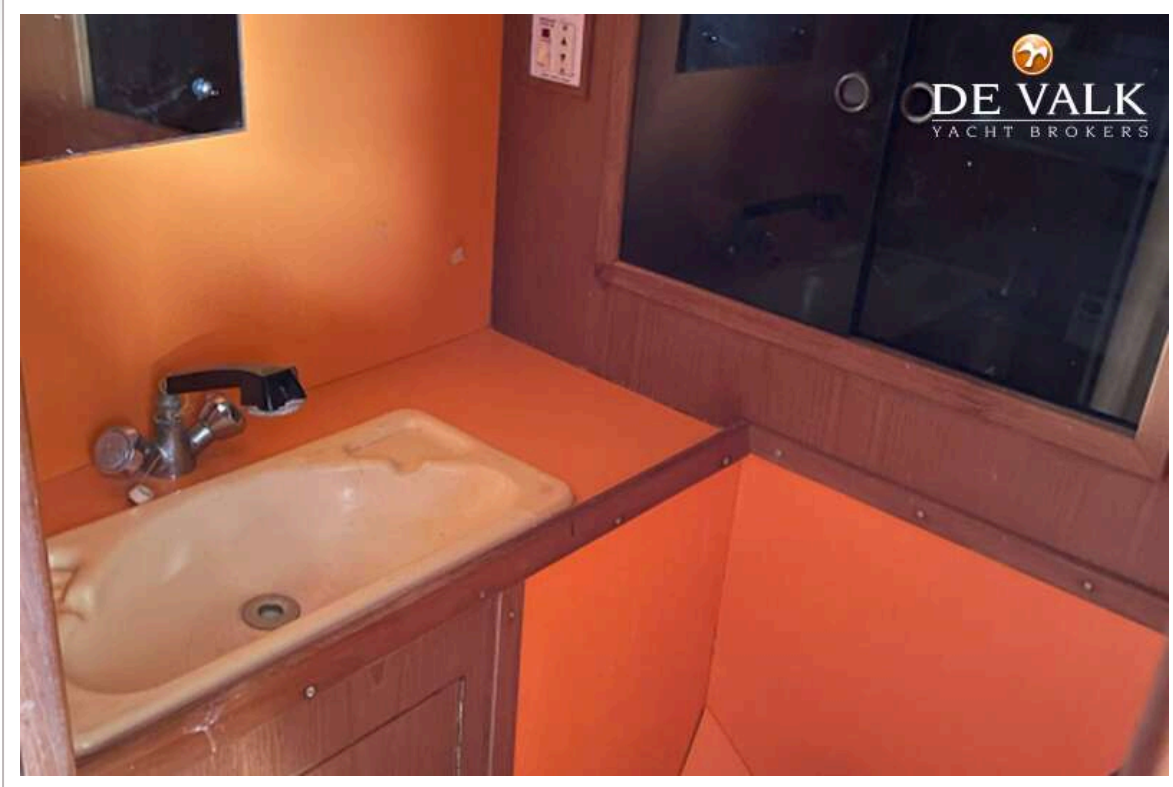
OYSTER 37



OYSTER 37



OYSTER 37



OYSTER 37

