



DE VALK  
YACHT BROKERS

## HALLBERG RASSY 49 KETCH



DE VALK  
YACHT BROKERS

# HALLBERG RASSY 49 KETCH

## VAN DE MAKELAAR

De Hallberg-Rassy 49 is een echte blue water klassieker, een fantastische boot met uitgebreide vaareigenschappen, ook voor wereldwijde cruises, of om voor langere tijd aan boord te wonen. Dit is de ideale combinatie van een robuuste constructie, enorm comfort zowel aan dek als beneden en is zeer gemakkelijk te handelen, want alle 4 nieuwe zeilen zijn oprolbaar. De eigenaren hebben bijna 20 jaar van de boot genoten en ze is duidelijk zichtbaar met veel liefde onderhouden. De boot ligt iets ten zuiden van Rotterdam. Neem contact op met ons kantoor in Sint Annaland voor een bezichtigingsafspraak

*Nick Lanting*

## SPECIFICATIES

|                   |                               |                      |                                  |
|-------------------|-------------------------------|----------------------|----------------------------------|
| <b>Afmetingen</b> | 14.96 x 4.42 x 2.20 (m)       | <b>Bouwer</b>        | Hallberg-Rassy Varvs AB          |
| <b>Bouwjaar</b>   | 1984                          | <b>Hutten</b>        | 3                                |
| <b>Materiaal</b>  | Polyester                     | <b>Slaapplaatsen</b> | 10                               |
| <b>Motor(en)</b>  | 1 x Volvo Penta TMD41B diesel | <b>Pk/Kw</b>         | 150 (pk), 110.40 (kw)            |
| <b>Vraagprijs</b> | € 278.000 (BTW Betaald)       | <b>Ligplaats</b>     | elders / niet bij verkoopkantoor |

## CONTACT

|                |   |                 |                        |
|----------------|---|-----------------|------------------------|
| <b>Kantoor</b> | De Valk Sint Annaland                                     | <b>Telefoon</b> | +31 166 601 000        |
| <b>Adres</b>   | Koelhuisweg 4<br>4697 RM Sint Annaland<br>The Netherlands | <b>E-mail</b>   | sintannaland@devalk.nl |

## DISCLAIMER

Hoewel er uiterste zorg besteed is aan de correctheid, volledigheid en actualiteit van onze informatie kunnen hieraan geen rechten worden ontleend.



# HALLBERG RASSY 49 KETCH

## ALGEMEEN

|                              |   |
|------------------------------|---|
| <b>Model</b>                 | HALLBERG RASSY 49 KETCH   |
| <b>Type</b>                  | zeiljacht   |
| <b>Lengte (m)</b>            | 14,96   |
| <b>Lengte waterlijn (m)</b>  | 12,50   |
| <b>Breedte (m)</b>           | 4,42  |
| <b>Diepgang (m)</b>          | 2,20  |
| <b>Doorvaarhoogte (m)</b>    | 21,65   |
| <b>Stahoogte (m)</b>         | 2,00  |
| <b>Bouwjaar</b>              | 1984  |
| <b>Gebouwd door</b>          | Hallberg-Rassy Varvs AB   |
| <b>Land</b>                  | Zweden  |
| <b>Ontwerper</b>             | Olle Enderlein & Christoph Rassy                                    |
| <b>Waterverplaatsing (t)</b> | 20  |
| <b>Ballast (ton)</b>         | lood 8  |
| <b>Bruto tonnage</b>         | 20  |
| <b>Netto tonnage</b>         | 6   |
| <b>CE norm</b>               | NA  |
| <b>Romp materiaal</b>        | polyester   |
| <b>Romp kleur</b>            | wit With dark blue striping   |
| <b>Rompvorm</b>              | S-spant   |
| <b>Kiel type</b>             | doorlopende kiel  |
| <b>Kimkielen</b>             | ja  |
| <b>Materiaal opbouw</b>      | polyester   |
| <b>Stootlijst</b>            | Brass   |
| <b>Dek materiaal</b>         | polyester   |
| <b>Afwerking dek</b>         | teak White spray painted (Alexseal 2-components) in 2012, teak 1996 |
| <b>Afwerking opbouw</b>      | teak White spray painted (Alexseal 2-components) in 2012            |
| <b>Afwerking kuip</b>        | teak Teak on the seats and teak grating on the floor                |
| <b>Antifouling (jaar)</b>    | 2022  |
| <b>Dorades</b>               | 5x Stainless steel with LED lights & stainless steel protect bar    |



# HALLBERG RASSY 49 KETCH

|                                      |  |
|--------------------------------------|--|
| <b>Dekluik</b>                       | 7 x Mosquito screen  |
| <b>Patrijspoorten</b>                | aluminium All with a watertight lockable alu flap & 12 x Mosquito screen   |
| <b>Isolatie</b>                      | Extra insulation along hull applied next to beds & SB in salon   |
| <b>Brandstoftank (liter)</b>         | roestvast staal 1 x 400 (under the engine)   |
| <b>Brandstoftank 2 (liter)</b>       | roestvast staal 2 x 300 (under saloon sofa seats)  |
| <b>Inhoudsmeter (brandstoftank)</b>  | Digital Tank Monitor   |
| <b>Brandstof dagtank (liter)</b>     | roestvast staal 30 (above engine + fuelfilter with waterseparator)   |
| <b>Inhoudsmeter (dagtank)</b>        | ja   |
| <b>Drinkwatertank (liter)</b>        | polyester 1450   |
| <b>Inhoudsmeter (drinkwatertank)</b> | Digital Tank Monitor   |
| <b>Vuilwatertank (liter)</b>         | roestvast staal 2 x  |
| <b>Vuilwatertank afvoer</b>          | Both with 3-way valves and directly in water under water line  |
| <b>Stuurwiel</b>                     | Leather covered stainless steel steering wheel   |
| <b>Buiten stuurstand</b>             | kettingbesturing Solimar pedestal - All steering cables renewed in 2019  |
| <b>Noodhelmstok</b>                  | ja   |
| <b>Extra info romp</b>               | In 2013 all through hull connections and sea cocks were renewed & the complete underwater hull was peeled. After which epoxy mats were applied and layers of epoxy were spray painted on the underwater hull. In 2022 the underwater hull was sanded, a layer of Hempel Silic Seal and a layer of Hempel Silic One Tiecoat were applied and finished with two layers of Hempel Silic One Red (a biocide-free, high-solid anti-fouling coating. A microlayer of silicone-based hydrogel provides a smooth, low-friction surface that prevents organisms from attaching to the hull and propeller). Service period of Silic One on the hull is two years |
| <b>Extra info verfsysteem</b>        | White spray painted (Alexseal 2-components) hull with blue striping & waterline (Alexseal 2-components) & all portholes spray painted (Alexseal 2-components) in 2008  |



# HALLBERG RASSY 49 KETCH

|                   |   |
|-------------------|---|
| <b>Extra info</b> | Very solid and safe fixed hardtop, laminated to the superstructure & white with dark blue striping spray painted in 2013. Teak on the roof of hardtop. The front windows can be opened (centre window full, other half). The inside of the fixed hardtop has been refurnished in 2008 and dimmable LED lights were applied. The chart tables in the cockpit, on both sides of the entrance, were replaced by grey HPL plates in 2022. In cold and heavy weather the cockpit can be closed quickly and easily with a divisible cockpit cover |
| <b>Extra info</b> | The original sliding entrance hatch has been replaced in 2013 by a transparent plastic sliding hatch, equipped with a roll-up sunshade & the original sliding hatch is also present. There are 2 teak entrance doors (1x with a window and 1x with a ventilation grille). Air vents on both aft deck locker hatches. Large locker in the cockpit  |
| <b>Extra info</b> | There are additional windows available for the deck hatches, in case of condensation risk in the winter period  |

## ACCOMMODATIE

|                            |  |
|----------------------------|--|
| <b>Hutten</b>              | 3  |
| <b>Slaapplaatsen</b>       | 10   |
| <b>Interieur</b>           | mahonie Upholstery & curtains renewed in saloon in 2023  |
| <b>Vloer</b>               | teak en holly  |
| <b>Achterdek</b>           | ja   |
| <b>Salon</b>               | With L-shaped saloon sofa on SB and a saloon sofa on PS (both convertible to bert 2,10 x 0,55 m). Storage space behind the backrests and in cabins above. SB Bunk bed: 2,05 x 0,55 m & PS Bunk bed: 2,00 x 0,55 m. All with lee-cloths |
| <b>Stahoogte salon (m)</b> | 2,00   |
| <b>Verwarming</b>          | diesel hete lucht 1x Webasto HL90 (2008)   |
| <b>Verwarming 2</b>        | 1x Heater convector connected in 2009 to internal cooling engine   |
| <b>Kaartentafel</b>        | On starboard side - Headroom : 1,87 m  |
| <b>Achterkajuit</b>        | 1 x  |
| <b>Dinette</b>             | ja   |
| <b>Ombouwbare kooi</b>     | ja   |



# HALLBERG RASSY 49 KETCH

|                            |   |
|----------------------------|---|
| <b>Keuken</b>              | On SB - U-shaped - Headroom : 1,87 - 1,92 m                           |
| <b>Aanrechtblad</b>        | Duropol Renewed in 2007   |
| <b>Spoelbak</b>            | roestvast staal 2 x   |
| <b>Kooktoestel</b>         | gas Force 10 - 3 burners  |
| <b>Oven</b>                | Force 10 oven/grill   |
| <b>Gasdetector</b>         | With electric remote controlled gas valve and ventilation             |
| <b>Magnetron</b>           | Severin (2013)  |
| <b>Koelkast</b>            | Top loader with a 24 Volt compressor                                  |
| <b>Vriezer</b>             | New in 2023 : Front loader with drawers & a 24 Volt compressor        |
| <b>Warmwatersysteem</b>    | 220V + motor 1x 80 Litre & 1 x 10 Litre                               |
| <b>Waterdruksysteem</b>    | elektrisch Jabsco Flo (2018)  |
| <b>Hand en/of voetpomp</b> | Foot pump (salt water) & hand pump (fresh water)                      |
| <b>Koffiezetapparaat</b>   | Kirk Electronic Coffee machine 24 Volt                                |
| <b>Eigenaarshut</b>        | tweepers. bed + enkel bed In the aft cabin - Headroom : 1,95 - 2,07 m |
| <b>Lengte bed (m)</b>      | 2,00 x 1,25 & 2,00 x 0,80   |
| <b>Kledingkast</b>         | hangend en legplanken   |
| <b>Badkamer</b>            | en suite Headroom : 1,84 m  |
| <b>Toilet</b>              | en suite  |
| <b>Toilet Systeem</b>      | elektrisch Jabsco (2015) with a fresh water flush pump (new in 2023)  |
| <b>Wasbak</b>              | in de badkamer  |
| <b>Douche</b>              | en suite Headroom : 1,72 - 1,88 m                                     |
| <b>Extra info</b>          | LED strips in aft cabin - Headroom in hallway : 1,74 - 1,76 m         |
| <b>Gastenhut 1</b>         | stapelbed Starboard side in front - Headroom : 2,03 m                 |
| <b>Lengte bed (m)</b>      | 2,00 x 0,80 & 2,00 x 0,70   |
| <b>Kledingkast</b>         | hangend en legplanken   |
| <b>Badkamer</b>            | gedeeld Headroom : 1,92 - 2,07 m                                      |
| <b>Toilet</b>              | gedeeld   |
| <b>Toilet systeem</b>      | elektrisch Jabsco   |
| <b>Wasbak</b>              | in de badkamer  |
| <b>Douche</b>              | gedeeld Headroom : 1,86 m   |



# HALLBERG RASSY 49 KETCH

|                             |  |
|-----------------------------|--|
| <b>Extra info</b>           | Headroom in hallway : 2,03 m   |
| <b>Gastenhut 2</b>          | eenpersoonsbed In workshop in the bow - Headroom : 1,86 - 1,97 m   |
| <b>Lengte bed (m)</b>       | 2,00 x 0,65  |
| <b>Kleerkast</b>            | legplanken   |
| <b>Extra info</b>           | The front cabin has been changed to a workshop with a V-worktop and a Scavenger's daughter mounted on it. Workshop has been painted in 2019. |
| <b>Was/droog combinatie</b> | Eumenia Babynova 1000 3 KG (2009)  |
| <b>Extra info</b>           | Teak wooden cutting board in the galley  |
| <b>Extra info</b>           | Entire interior revarnished in 2019. Mostly LED lights (with remote control) & several ventilators throughout the interior                   |

## MOTOR(EN)

|                               |   |
|-------------------------------|---|
| <b>Aantal motoren</b>         | 1   |
| <b>Merk</b>                   | Volvo Penta   |
| <b>Type</b>                   | TMD41B  |
| <b>Pk</b>                     | 150   |
| <b>kW</b>                     | 110.40  |
| <b>Brandstof</b>              | diesel  |
| <b>Geïnstalleerd in jaar</b>  | 2014  |
| <b>Maximale snelheid (kn)</b> | 9   |
| <b>Kruissnelheid (kn)</b>     | 8   |
| <b>Verbruik (ltr/uur)</b>     | 4,5   |
| <b>Motoruren</b>              | 1891  |
| <b>Koelsysteem motor</b>      | indirecte warmtewisselaar   |
| <b>Aandrijving</b>            | schroefas   |
| <b>Motorbediening</b>         | bowden kabels   |
| <b>Keerkoppeling</b>          | hydraulisch Volvo MS4A  |
| <b>Boegschroef</b>            | elektrisch 2 x 24 Volt Vetus TF12, 3 kW, each with a 3 bladed propeller |
| <b>Uitlaatsysteem</b>         | watergekoeld  |



# HALLBERG RASSY 49 KETCH

|                                |   |
|--------------------------------|---|
| <b>Stuwdruklager</b>           | Renewed in 2014   |
| <b>Type schroef</b>            | vast Renewed in 2014  |
| <b>Schroefbladen</b>           | 3   |
| <b>Materiaal schroefas</b>     | roestvast staal 40 mm - outer shaft bearing (2018) & 24 Volt alternator (2019)  |
| <b>Smering schroefas</b>       | vet New in 2022 : Volvo Penta inner shaft bearing   |
| <b>Handlenspomp</b>            | ja  |
| <b>Elektrische lenspomp</b>    | New in 2023   |
| <b>Bilge alarm</b>             | ja  |
| <b>Elektrische installatie</b> | 12 & 24 & 220 Volt  |
| <b>Generator</b>               | stille separator New in 2021 : Mastervolt Whisper 8000 - 6,4 kVA  |
| <b>Draaiuren generator</b>     | 72  |
| <b>Startaccu</b>               | 1 x Optima Red Top 55 Ah (2015)   |
| <b>Lichtaccu</b>               | 72 x LiFePo4 3,2 V 45 Ah = 24 Volt 405 Ah Lithium (2015)  |
| <b>Generatoraccu</b>           | 1 x Optima Red Top 55 Ah (2019)   |
| <b>Boegschroefaccu</b>         | 2 x Optima Yellow Top 55 Ah (2015)  |
| <b>Accu monitor</b>            | Several Battery Monitors  |
| <b>Acculader</b>               | 2 x Victron Skylla TG 24V/50A   |
| <b>Omvormer</b>                | Victron Phoenix : 1x 24V/3000W (2014) & 1x 24V/800W & 1x 500W   |
| <b>Windgenerator</b>           | Electric Energy D400 24 Volt (in the mizzen mast - 2011)  |
| <b>Zonnecellen</b>             | 2 x 100 W & 1 x 200 Watt Solar panel installed (in 2015) on a stainless steel bracket on the stern. Two solar panels are hinged on gas springs, making them foldable up and down. In 2023 equipped with a new intelligent Fox-50 Solar Charge Regulator & a Cepever MPPT Solar Charge Controller. |
| <b>Diodebrug</b>               | ja  |
| <b>Walstroom</b>               | met kabel   |
| <b>Scheidingstrafo</b>         | Electronic isolation transformer with display (2008)  |
| <b>Watermaker</b>              | 220 Volt. Refitted in 2015. Completely preserved in 2016, not used since. Functioning unknown, so needs to be checked   |
| <b>Extra info</b>              | Mastervolt AC-Power Analyzer ACM-I  |
| <b>Extra info</b>              | Several 12V, USB, 24V & 220V sockets throughout the boat  |





## Extra info

Double diesel filter with waterseparator. Second alternator (24

## NAVIGATIE

### Kompas

Sestrel 5 on the pedestal

### Electrisch kompas

2 x Autohelm ST50 Compass

### Dieptemeter

2 x Autohelm ST50 Depht

### Log

Autohelm ST50 Speed

### Windmeetset

Autohelm ST50 Wind + VMG

### Repeaters

2 x Autohelm ST50 Multi (at card table & in cockpit)

### Marifoon

2x Icom IC-M421 with Mic (in the cockpit & at the card table) &  
2x Shipmate cockpit speaker

### Handmarifoon

Icom IC-M33

### Autopiloot

1 x 24 Volt Whitlock connected to the chain under the pedestal (in the engine room) & 1 x Whitlock connected directly on the quadrant. Both systems are equipped with their own Autohelm ST7000 control panel (at the chart table). Since these systems cannot be used simultaneously, there is a selector switch at the chart table, after which the activated system also can be operated from the cockpit via the Raymarine ST6002 Display (mounted on the pedestal in 2019). As back-up is an Autohelm ST4000 present, which can be mounted on the steering wheel

### Roerstand aanwijzer

Via the Raymarine ST6002 display

### Radar

Simrad 4G radar dome antenna (installed in mizzen mast)

### GPS

1 x Furuno GP 52 & 2 x Autohelm ST50 GPS

### Radar/GPS/plotter

B&G Z8 Screen at chart table, connected to Simrad 4G radardome

### Weer ontvanger

Furuno D Fax weather Navtex receiver

### Navtex

Furuno Navtex NX-300

### PC computer

Laptop with navigation program

### PC aansluiting

ja

### Wifi antenne

(2013) In mizzen mast, with switch, router, Smartlink and cables

### AIS transceiver

AdvanSea Class B AIS Transceiver TR200 (2013)

### Epirb

1x EPIRB 1 Ocean Signal

### Camera

PTZ Camera system in the mizzen mast



# HALLBERG RASSY 49 KETCH

|                             |   |
|-----------------------------|---|
| <b>Navigatieverlichting</b> | LED; 3-Colour, anchor, steaming, deck, bow, stern & cockpit   |
| <b>Zoeklicht</b>            | ja  |
| <b>Extra info</b>           | 2 x Reading light in the cockpit & 1 x at the chart table   |
| <b>Extra info</b>           | Sailor T&T Inmarsat Mini M phone (not in use). Furuno Lightning Protector. Prosser Weathertrend Digital Barometer |

## UITRUSTING

|                              |   |
|------------------------------|---|
| <b>Vaste buiskap</b>         | Headroom : 1,66 m - Teak on the roof                              |
| <b>Kuipent</b>               | 2 x Dark grey (1x high & 1x low, both with windows)               |
| <b>Zonnetent</b>             | Over the cockpit (2012)   |
| <b>Wintertent</b>            | 1x Wintercover & 1x Summercover (both over entire deck)           |
| <b>Kuipkussens</b>           | Loose cushions  |
| <b>Kuiptafel</b>             | Varnished teak with folding side panels and light                 |
| <b>Zwemplatform</b>          | Custom Made in stainless steel with teak, mounted on the stern    |
| <b>Zwemtrap</b>              | roestvast staal   |
| <b>Boegtrap</b>              | Loose aluminium ladder  |
| <b>Loopplank</b>             | 1 x Custom Made gangway (aluminium & stainless steel) & 1 x wood  |
| <b>Dekdouche</b>             | With hot & cold pressured fresh water                             |
| <b>Anker</b>                 | Rocna 45 KG (2015)  |
| <b>Ankerketting</b>          | 100 m Heavily galvanized & approved chain (new in 2023)           |
| <b>Anker 2</b>               | Bruce (80 lb) & Fisherman (54 lb). Anchor line & some meter chain |
| <b>Ankerlier</b>             | elektrisch Lofrans with deck buttons & a wired remote control     |
| <b>Kaapstander</b>           | On the windlass   |
| <b>Dekwasinstallatie</b>     | Pump renewed in 2017  |
| <b>Buitenboordmotorsteun</b> | On the pushpit  |
| <b>Davits</b>                | roestvast staal   |
| <b>Davits bediening</b>      | handmatig   |
| <b>Zeereling</b>             | draad Double wired  |
| <b>Handgreep (opbouw)</b>    | teak  |
| <b>Zij-instap in reling</b>  | Amidships on both sides & Portside on bow                         |



# HALLBERG RASSY 49 KETCH

|                                    |   |
|------------------------------------|---|
| <b>Hekstoel</b>                    | Stainless steel with a folding teak seat on SB  |
| <b>Preekstoel</b>                  | Stainless steel   |
| <b>Reddingsvlot</b>                | container Viking (2016), mounted on deck in front of the fixed hard top   |
| <b>Reddingsvlot (pers)</b>         | 6   |
| <b>Reddingsvlot laatst gekeurd</b> | Never surveyed, so needs to be surveyed   |
| <b>Zwemvesten</b>                  | 2 x   |
| <b>Reddingsboei</b>                | 1 x White horse shoe rescue buoy & 1 x Rescue Sling   |
| <b>Joon</b>                        | 1 x   |
| <b>Veiligheidslijnen op dek</b>    | ja  |
| <b>Ruitenwisser</b>                | 1 x (2007)  |
| <b>Hoorn</b>                       | Loose horn  |
| <b>Radar reflektor</b>             | Trilens radar reflector in the mizzen mast  |
| <b>Stoatkussens</b>                | ja  |
| <b>Landvasten</b>                  | ja  |
| <b>Reserve onderdelen</b>          | Very extensive range of spare parts   |
| <b>Alarm systeem</b>               | Connected to a light on the mizzen mast & a light in the cockpit  |
| <b>TV</b>                          | 1x in Aft cabin & 1x Grundig TV in bunk bed cabin   |
| <b>Radio-cd speler</b>             | Stein radio/CD/DVD/MP4 player   |
| <b>Kuipspeakers</b>                | 2 x Ultra Linear  |
| <b>Speakers in salon</b>           | 4 x   |
| <b>Klok - barometer</b>            | Clock, Barometer, temperature meter, chronometer & Barograph  |
| <b>Brandblusser</b>                | 4 x   |
| <b>Extra info</b>                  | Alarm system with notification to mobile phone (reporting points: sliding hatch, engine, bilge, shore power, temperature, gas & smoke detection and life camera image). Fire blanket. Rescue line on a reel on the pushpit. Small Duralock Safe. Bosuns chair |
| <b>Extra info</b>                  | Red lights installed in the anchor locker in 2018   |
| <b>Extra info</b>                  | Very extensive documentation, manuals and maintenance history available   |

## TUIGAGE



# HALLBERG RASSY 49 KETCH

|                                |   |
|--------------------------------|---|
| <b>Tuigage</b>                 | kits-kotter   |
| <b>Staand want</b>             | Dyform New in 2023, including covers over tentioners                                |
| <b>Merk mast</b>               | Reckmann All wires in both masts renewed in 2008                                    |
| <b>Materiaal mast</b>          | aluminium gespoten Both masts&booms white spray painted (Alexseal 2components-2008) |
| <b>Zalingen</b>                | Main : 2x set of spreaders - Mizzen : 1 x set of spreaders                          |
| <b>Grootzeil</b>               | New in 2022 UK Sails Cruising Offshore Furling mainsail - 43m2                      |
| <b>Rolgrootzeil</b>            | Reckmann - Hydraulic  |
| <b>Bezaan</b>                  | New 2022 UK Sails Cruising Offshore Furling mizzen sail (manual)                    |
| <b>Fok</b>                     | New 2022 UK Sails Cruising Offshore Furling Cutter Jib - 25,9m2                     |
| <b>Genua</b>                   | New in 2022 UK Sails Cruising Offshore Furling Genoa - 74m2                         |
| <b>Genua rolreefsysteem</b>    | Reckmann - Hydraulic  |
| <b>Genua hoes</b>              | New in 2022 : Dark blue Genoa & Cutter Jib cover                                    |
| <b>Kotter rolreefsysteem</b>   | Hood 915 Seafurl - manual with an endless reefing line                              |
| <b>Gennaker</b>                | Gennaker (2019)   |
| <b>Spinnaker</b>               | MPS (2014)  |
| <b>Stormgrootzeil</b>          | ja  |
| <b>Stormfok</b>                | ja  |
| <b>Reefinstallatie</b>         | rolgrootzeil in de mast   |
| <b>Giekneerhouder</b>          | gasdrukveer Selden on mainsail boom & tackle on mizzen boom                         |
| <b>Primaire schootlieren</b>   | 2 x Meissner 28 ST (main sheet)   |
| <b>Secondaire schootlieren</b> | 2 x Meissner 28 ST (Cutter Jib Sheet)   |
| <b>Genua schootlieren</b>      | 2 x Lewmar 65 ST  |
| <b>Vallieren</b>               | Lewmar: Main: 2x43ST+1x46ST (with jammers) & 2x8. Mizzen: 2x16ST                    |
| <b>Reeflier</b>                | 1 x Lewmar 8 (on boom of main mast)   |
| <b>Spinnakerboom</b>           | aluminium 2 x Hanging on front side of the main mast                                |
| <b>Jockey-boom</b>             | aluminium 1 x   |
| <b>Extra info</b>              | Shape Tape & grey UV protection strip on both Genoa & Cutter Jib                    |



## Extra info

Lewmar mainsheet rails with end-stops. All blocks are in alucarbon. Jack stays with tackle & Lewmar blocks. 6 x Spinlock jammer. Antal mainsheet blocks. Stainless steel granny bars around the main mast. The mast wiring runs through a stainless steel gooseneck to below deck. Stainless steel mast steps on mizzen mast till the spreaders. Stainless steel flag pole on top of the mizzen mast. There are some extra (older) spare sails available. After the furling sails of both masts have been lowered, strips can be hoisted into both mast profiles. This prevents the wind from causing an enormous whistling sound on both masts



# HALLBERG RASSY 49 KETCH



# HALLBERG RASSY 49 KETCH



# HALLBERG RASSY 49 KETCH





# HALLBERG RASSY 49 KETCH



# HALLBERG RASSY 49 KETCH



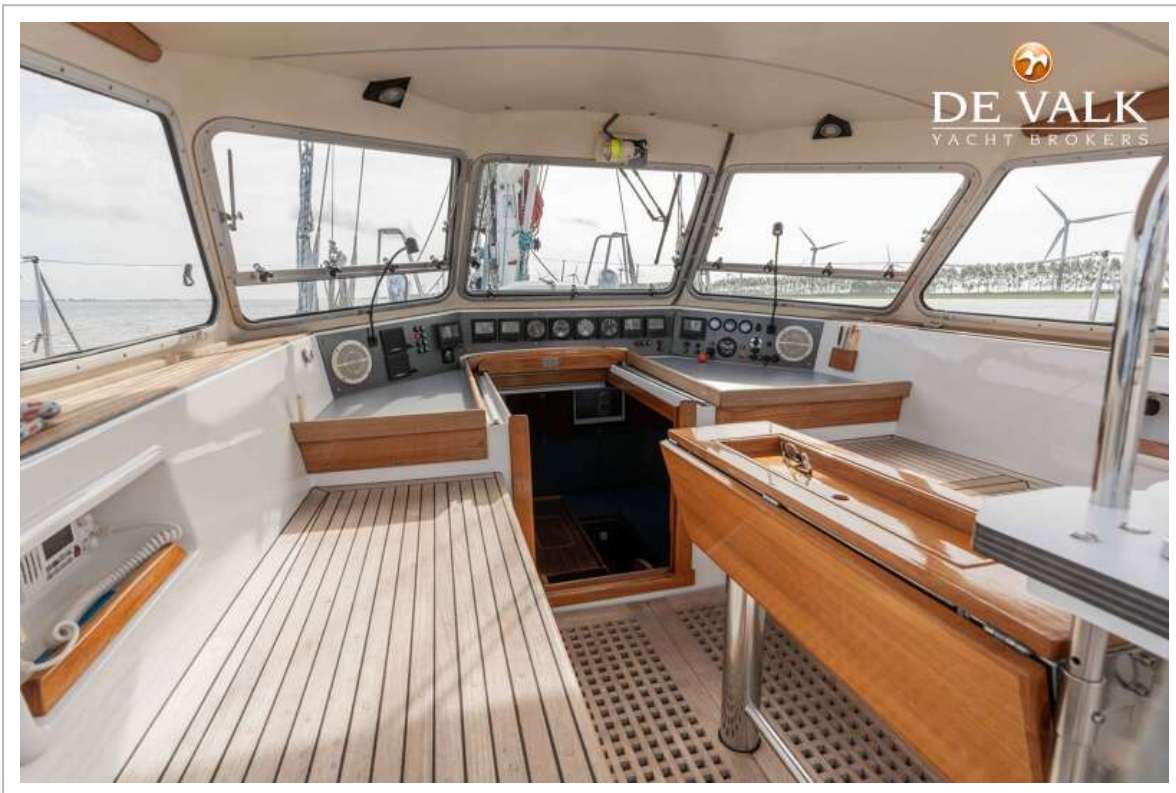
# HALLBERG RASSY 49 KETCH



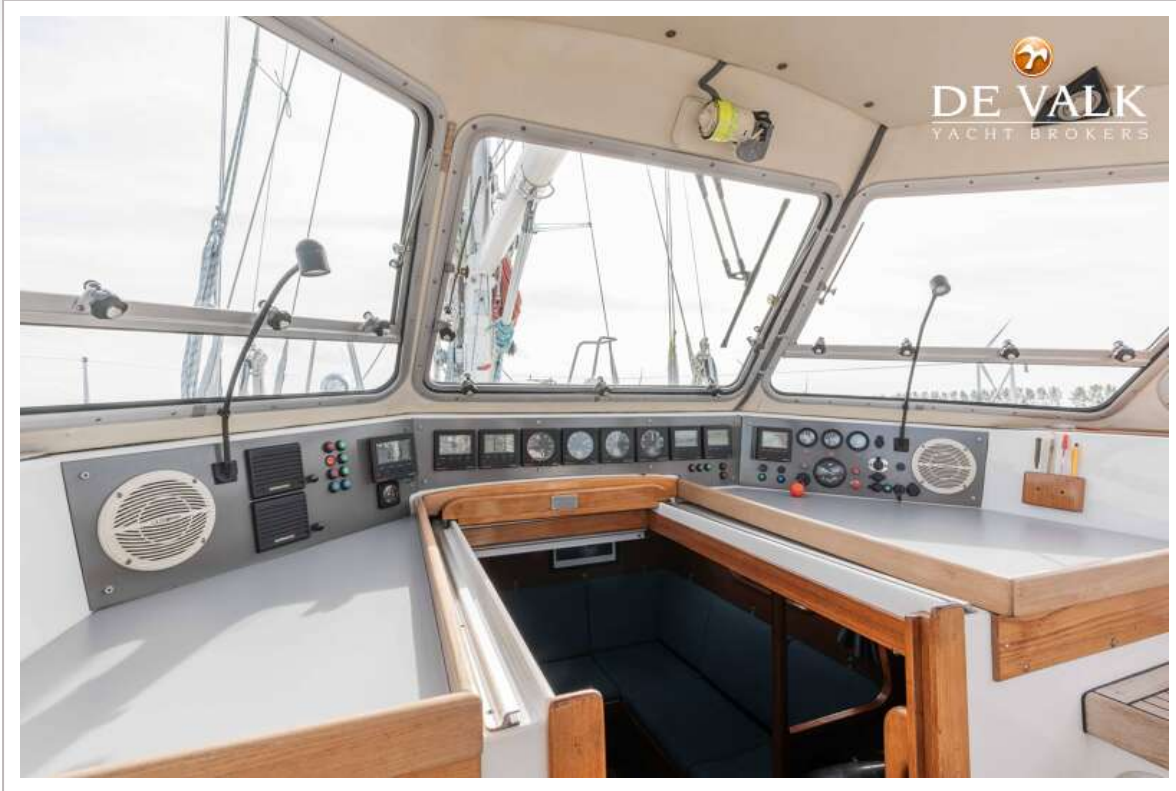
# HALLBERG RASSY 49 KETCH



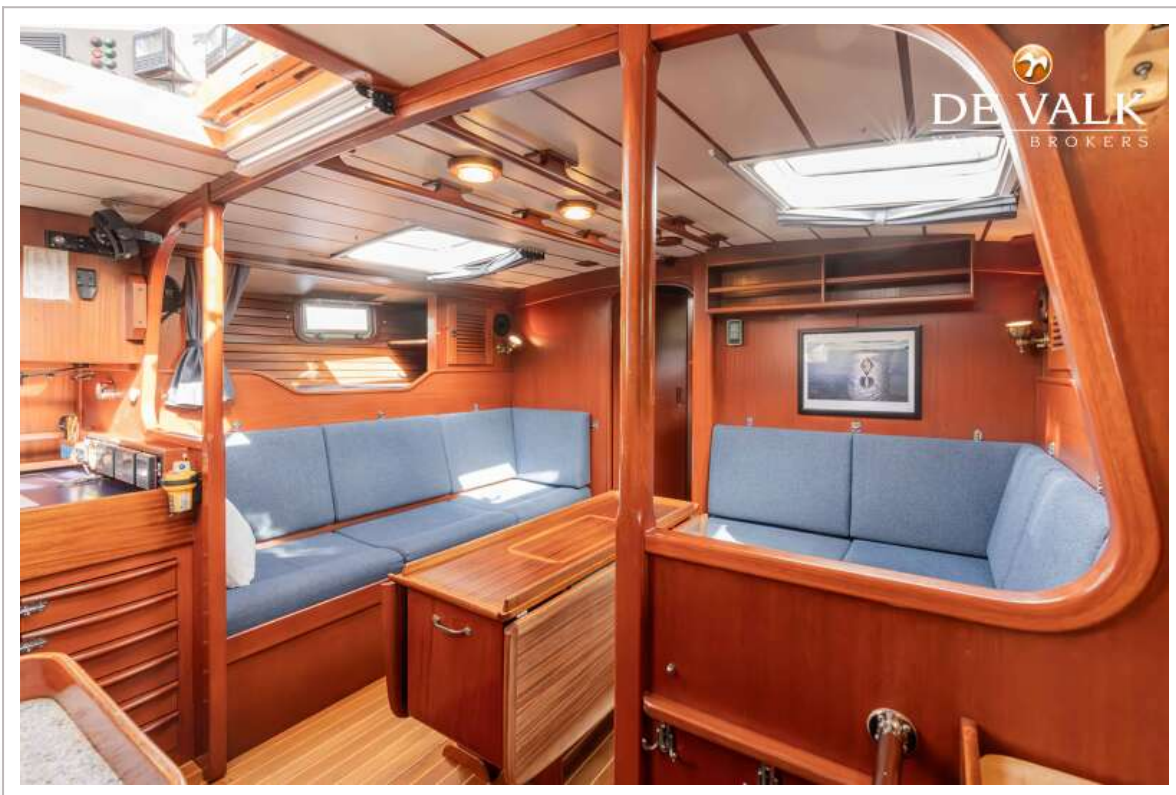
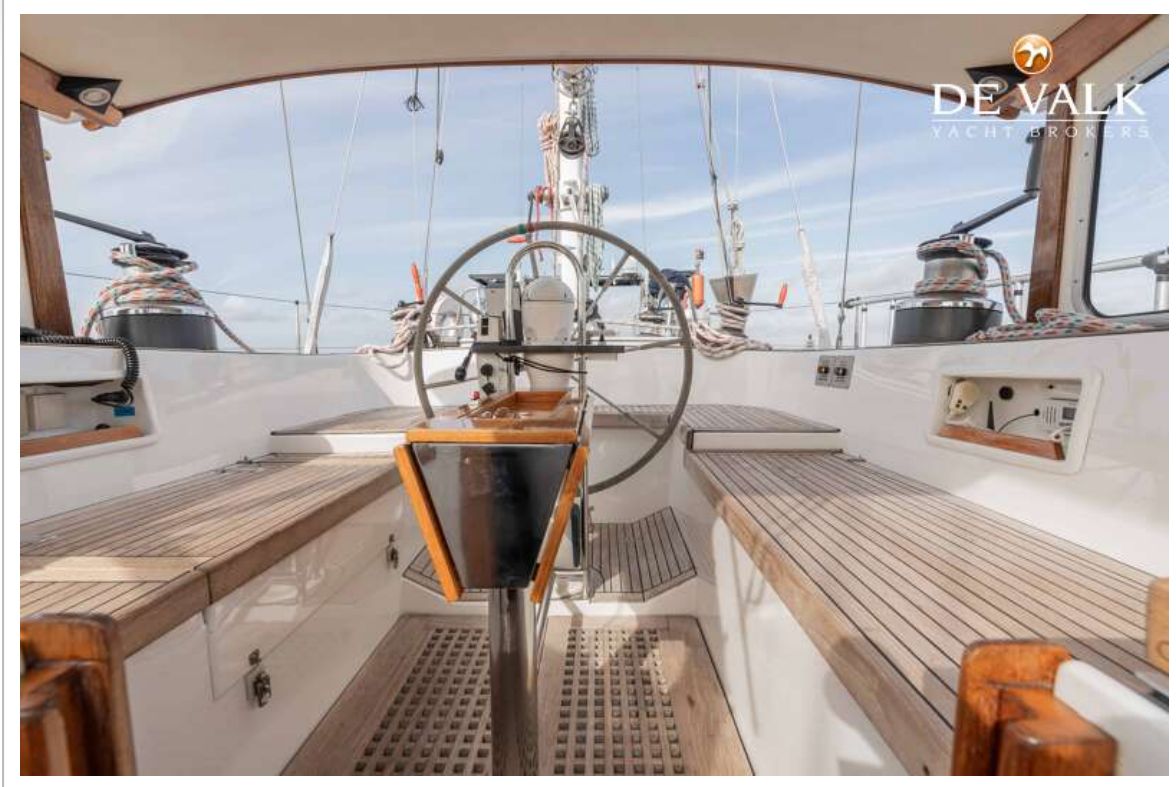
# HALLBERG RASSY 49 KETCH



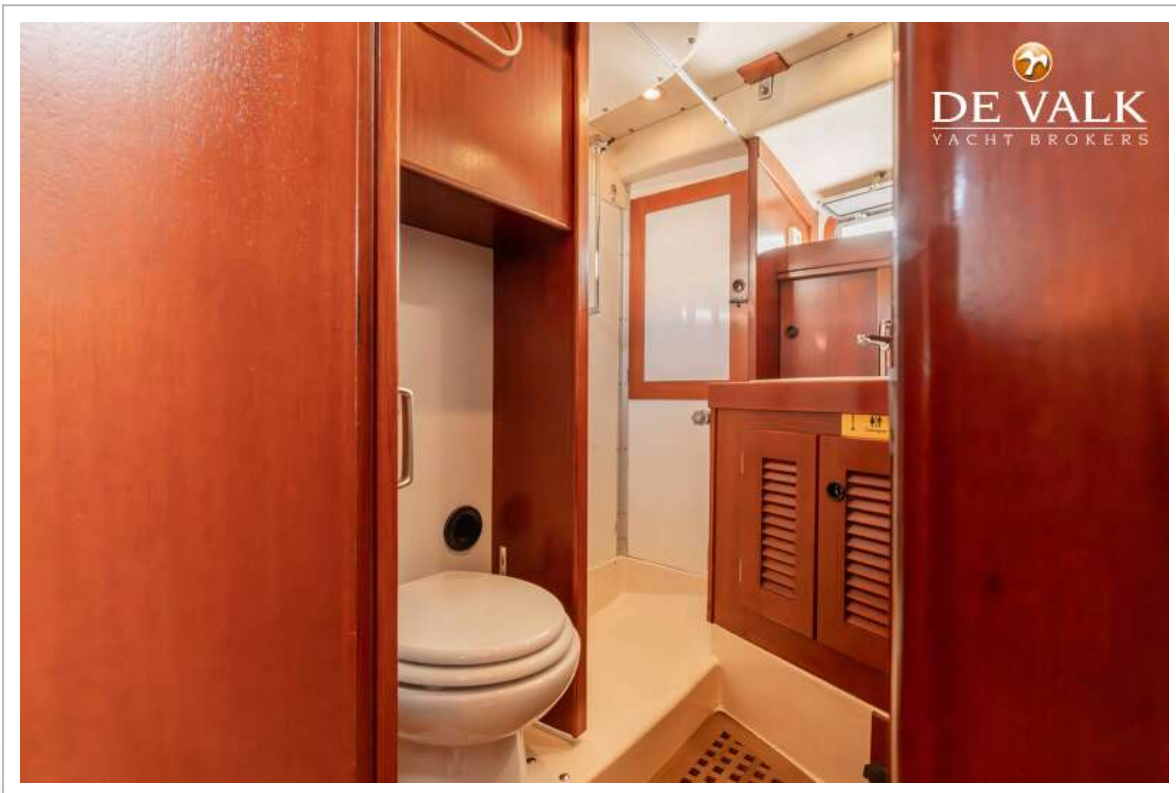
# HALLBERG RASSY 49 KETCH



# HALLBERG RASSY 49 KETCH

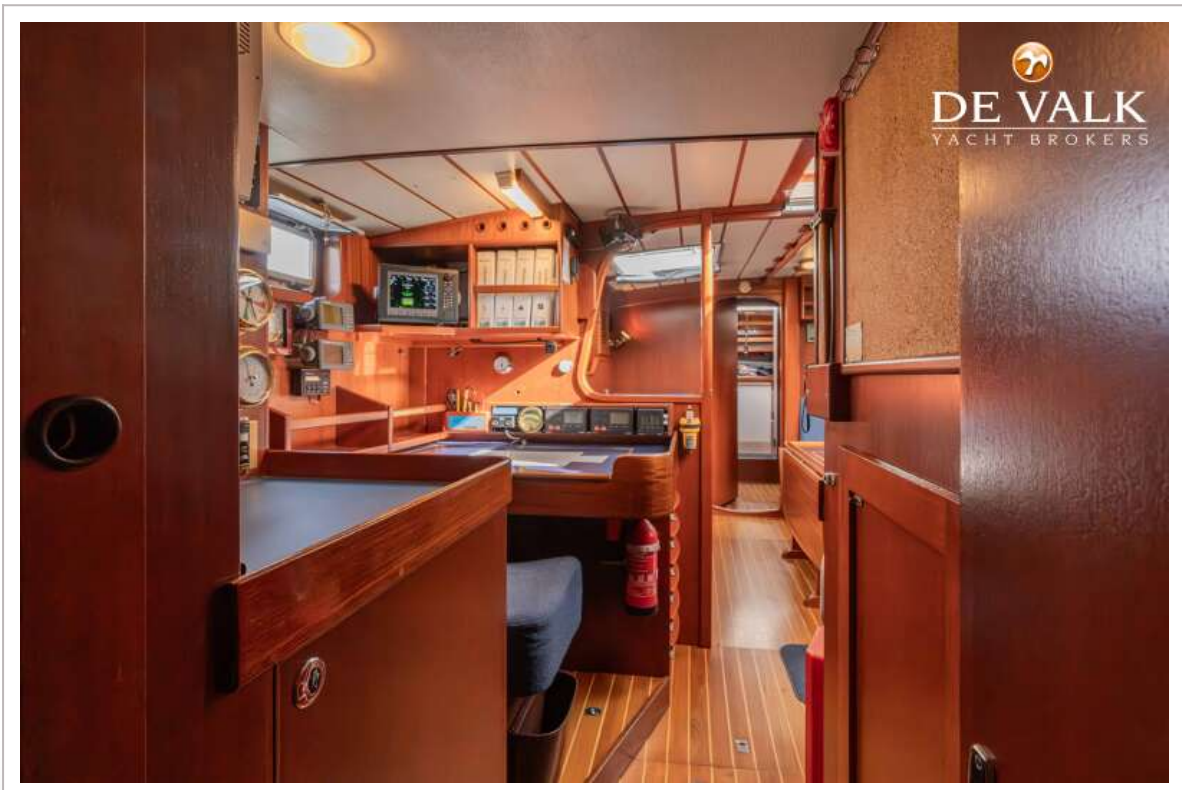
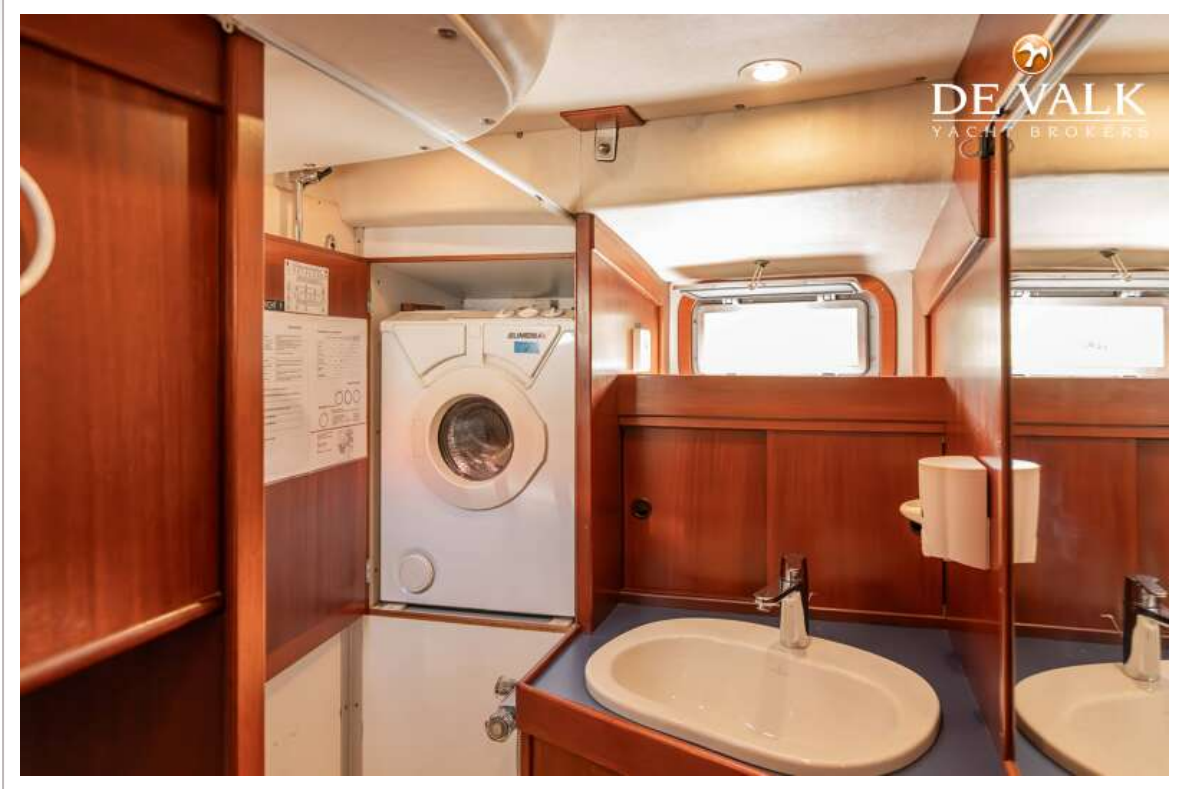


# HALLBERG RASSY 49 KETCH





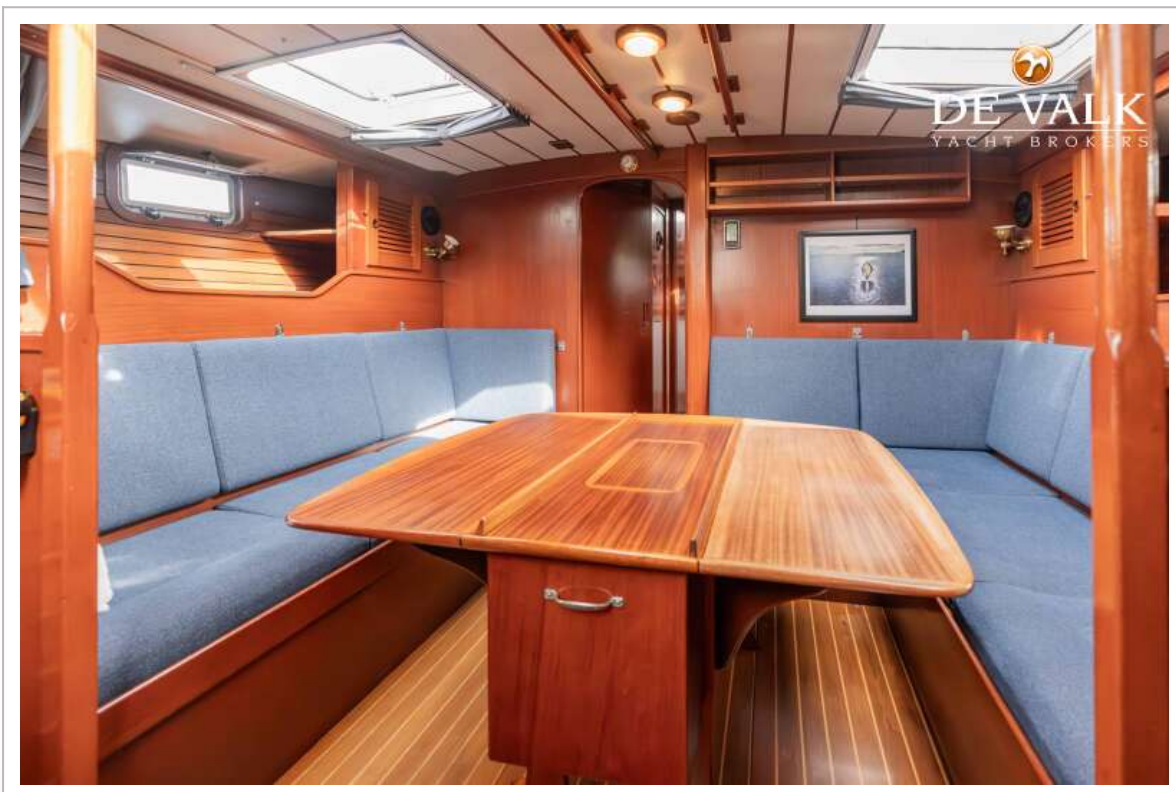
# HALLBERG RASSY 49 KETCH



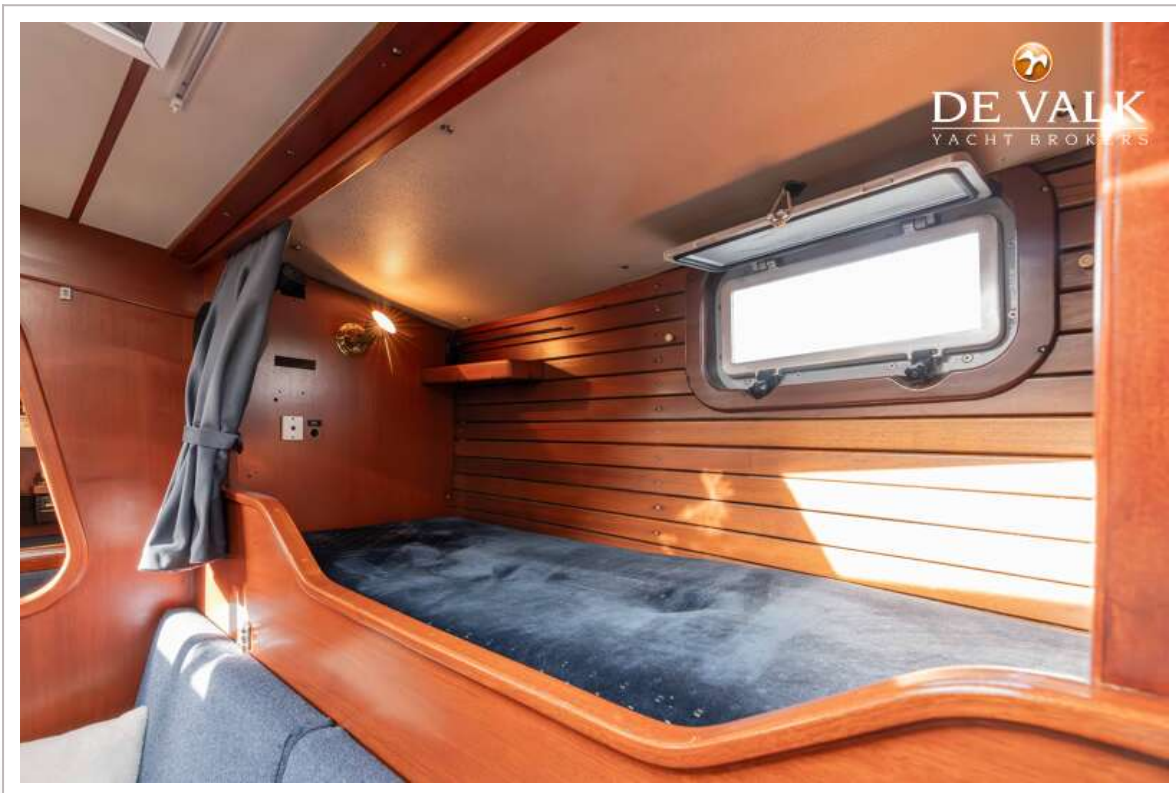
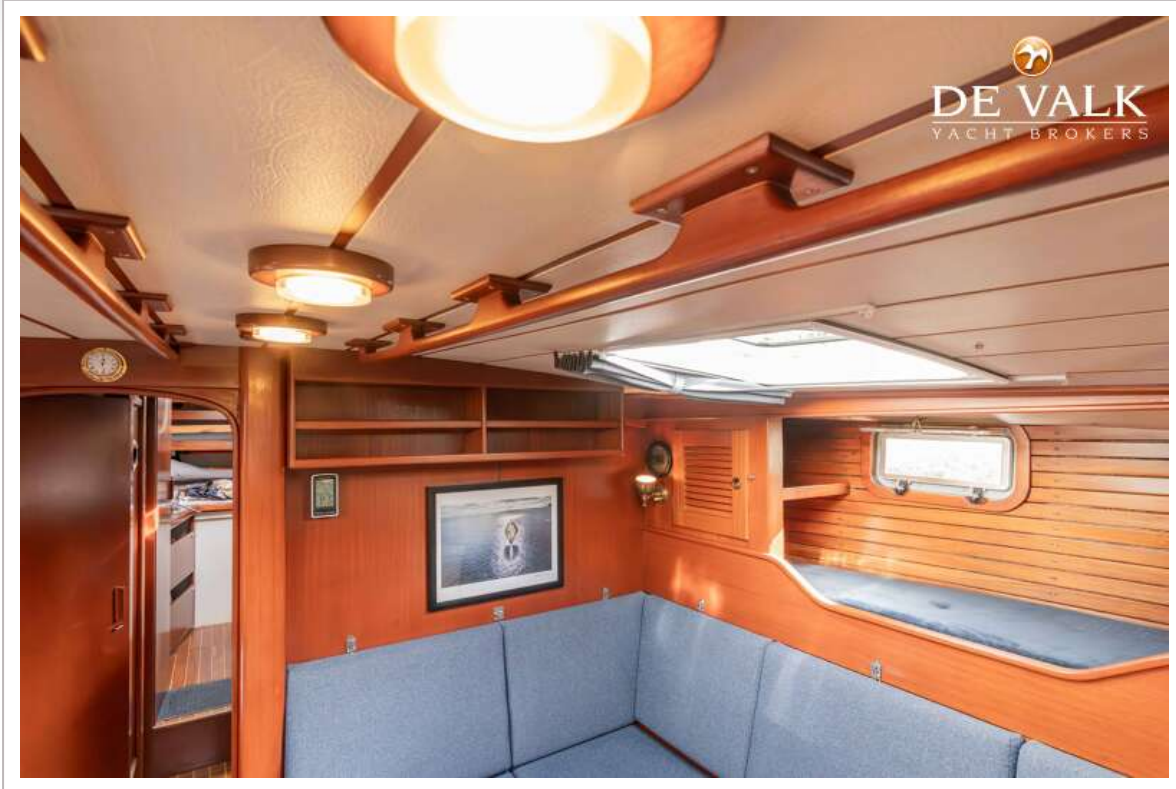
# HALLBERG RASSY 49 KETCH



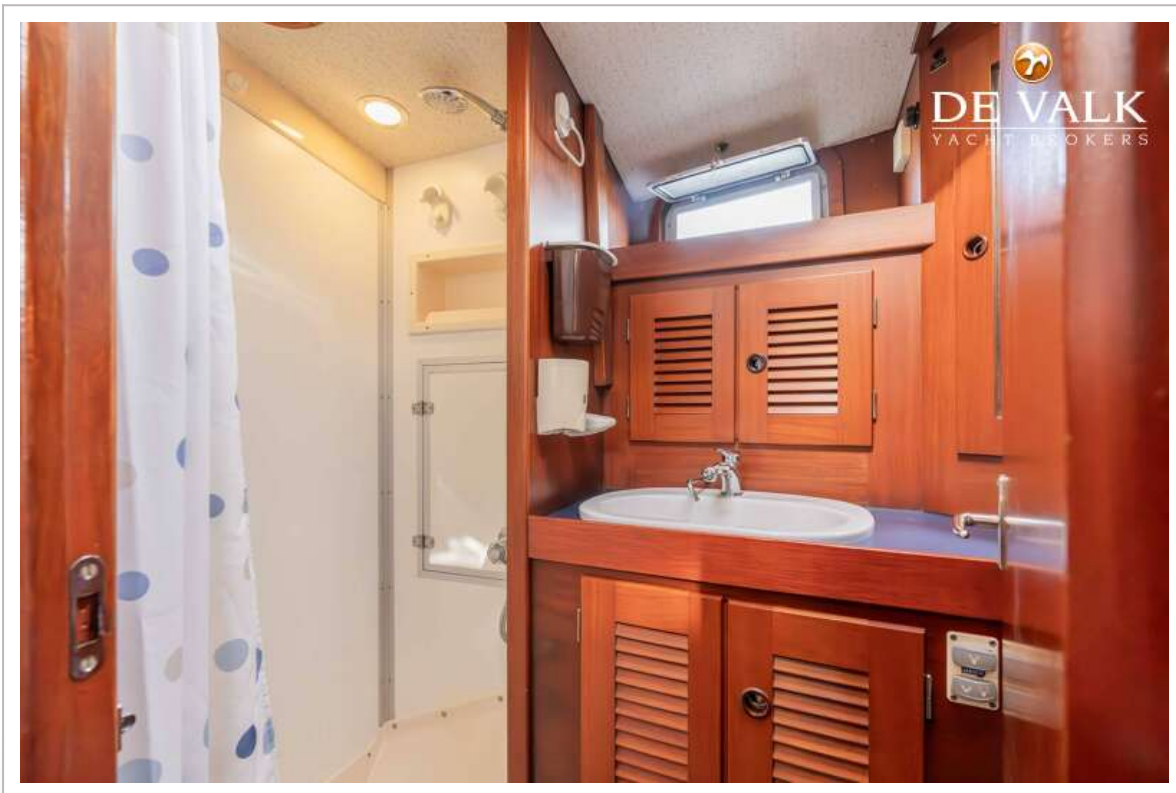
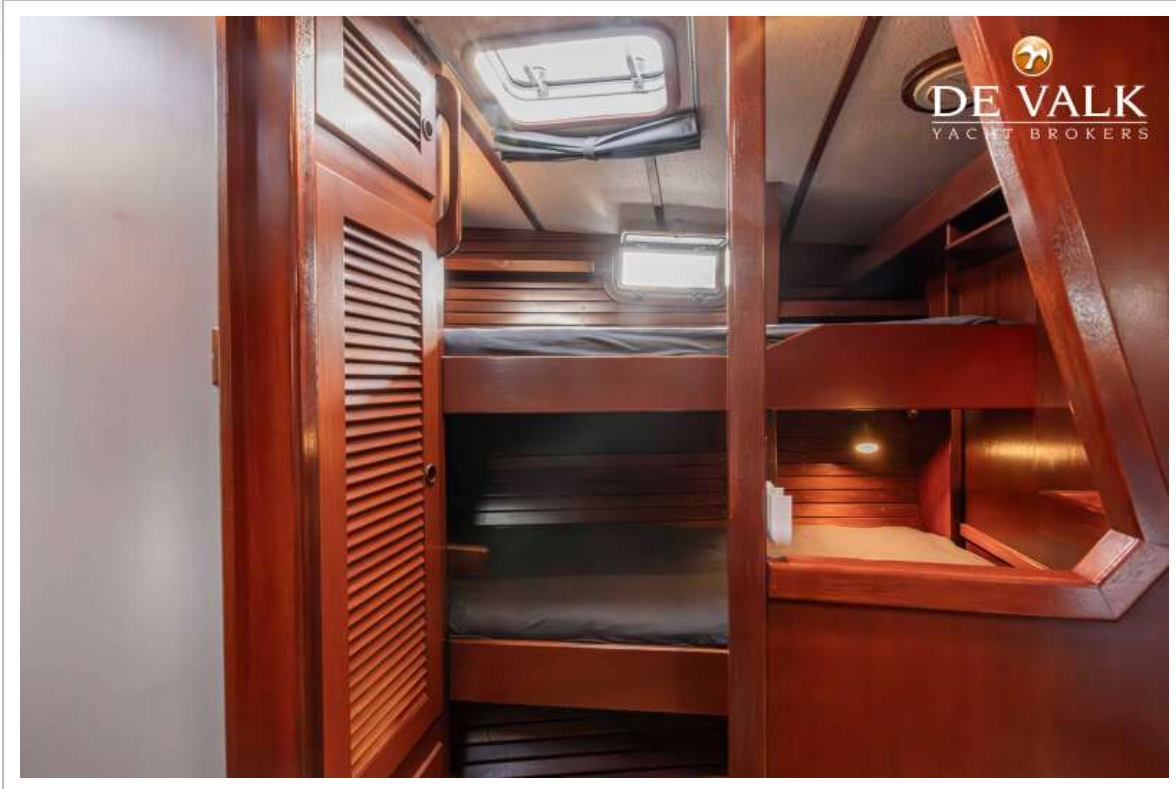
# HALLBERG RASSY 49 KETCH



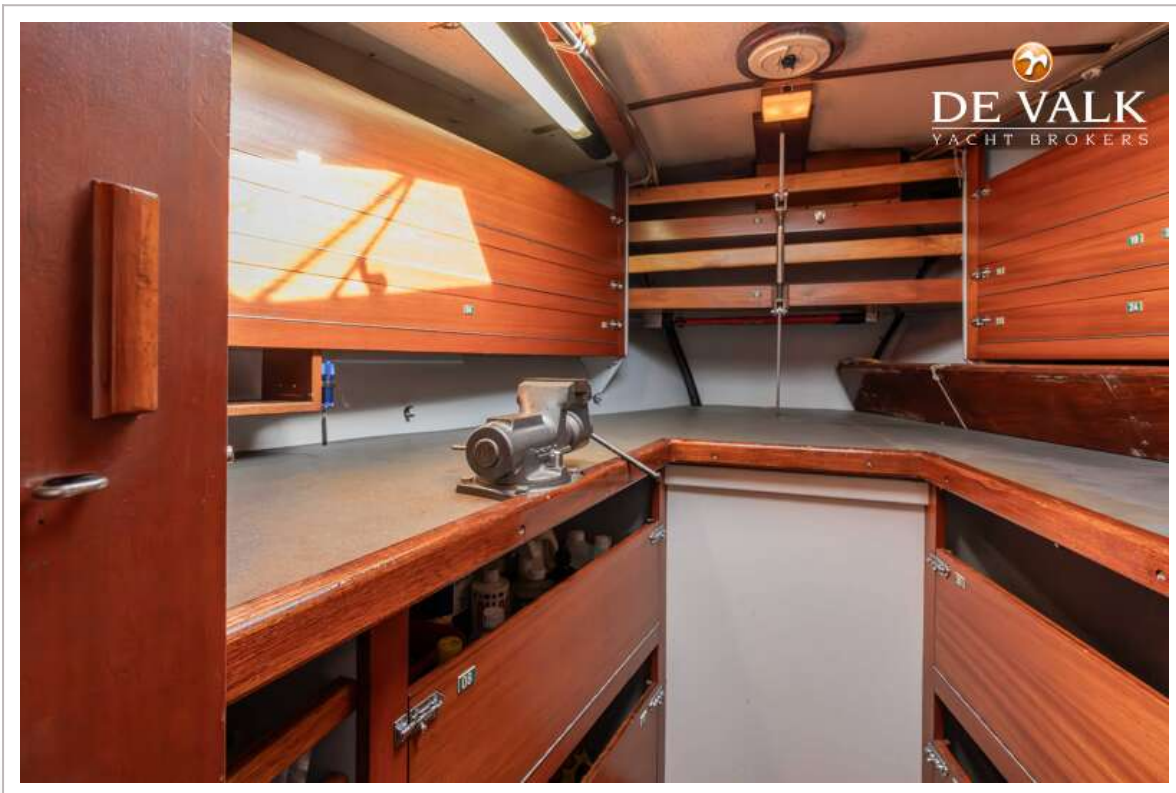
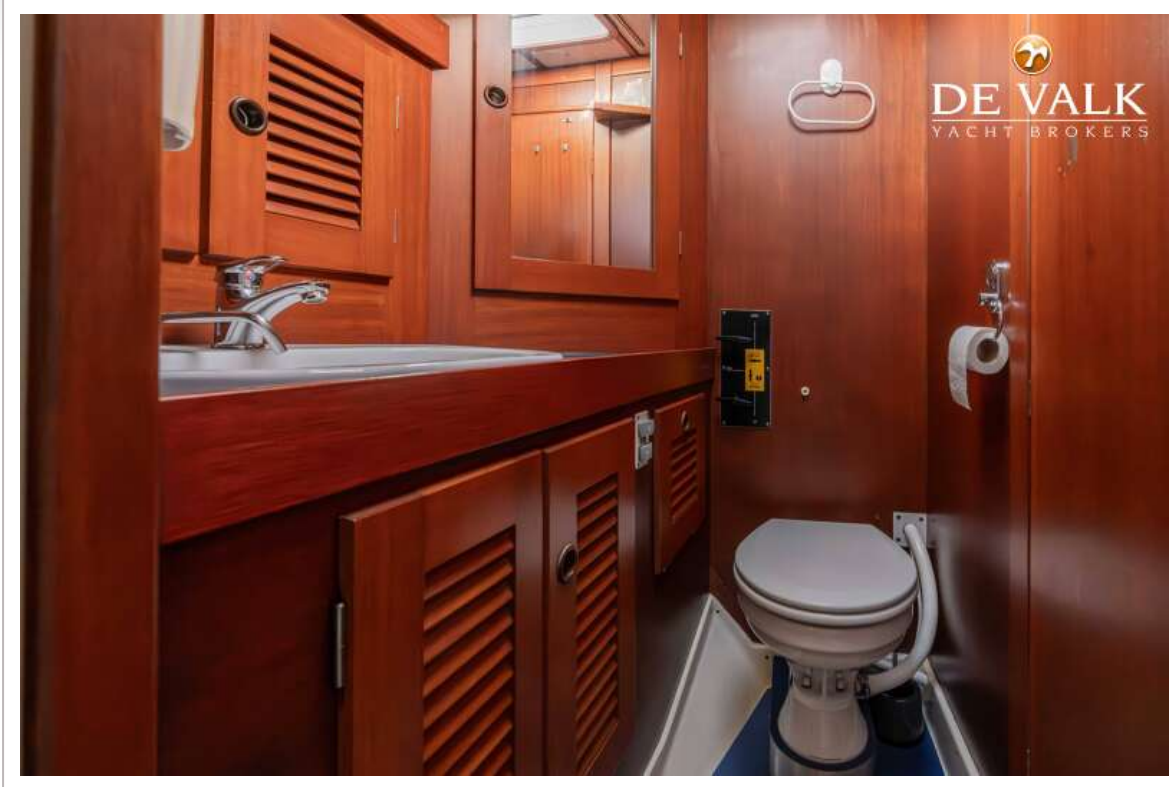
# HALLBERG RASSY 49 KETCH



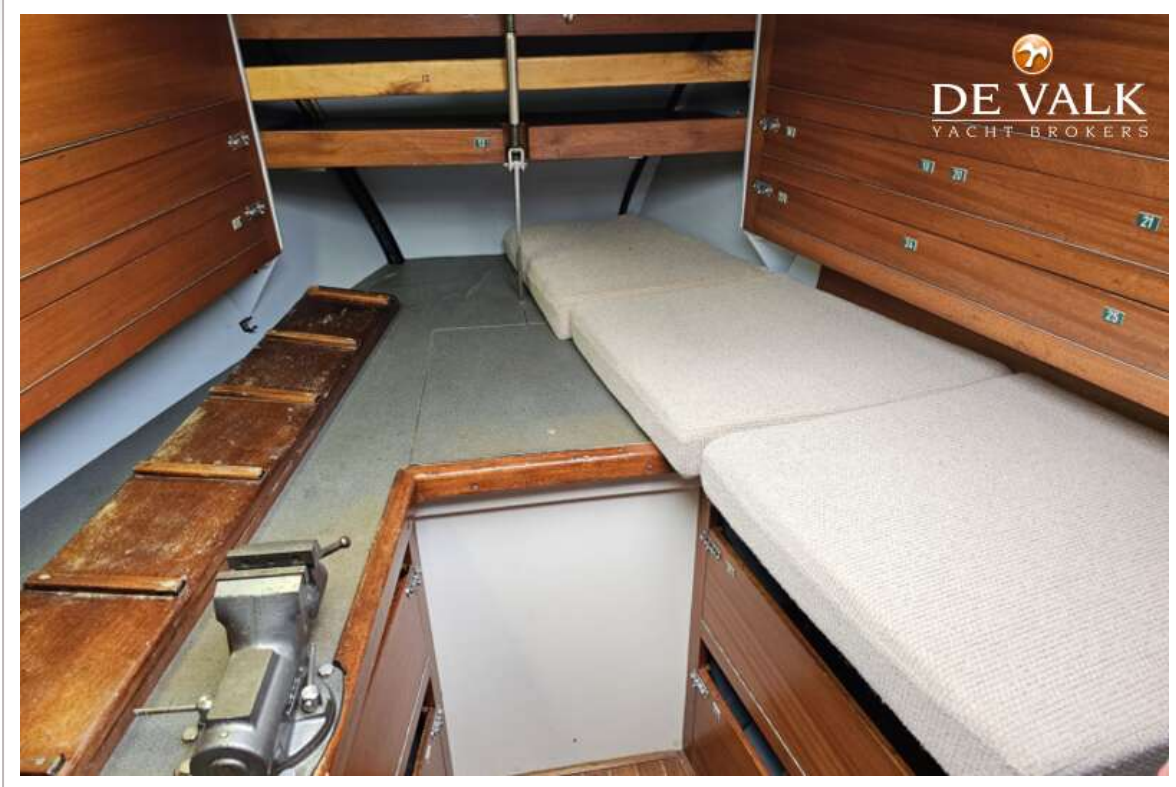
# HALLBERG RASSY 49 KETCH



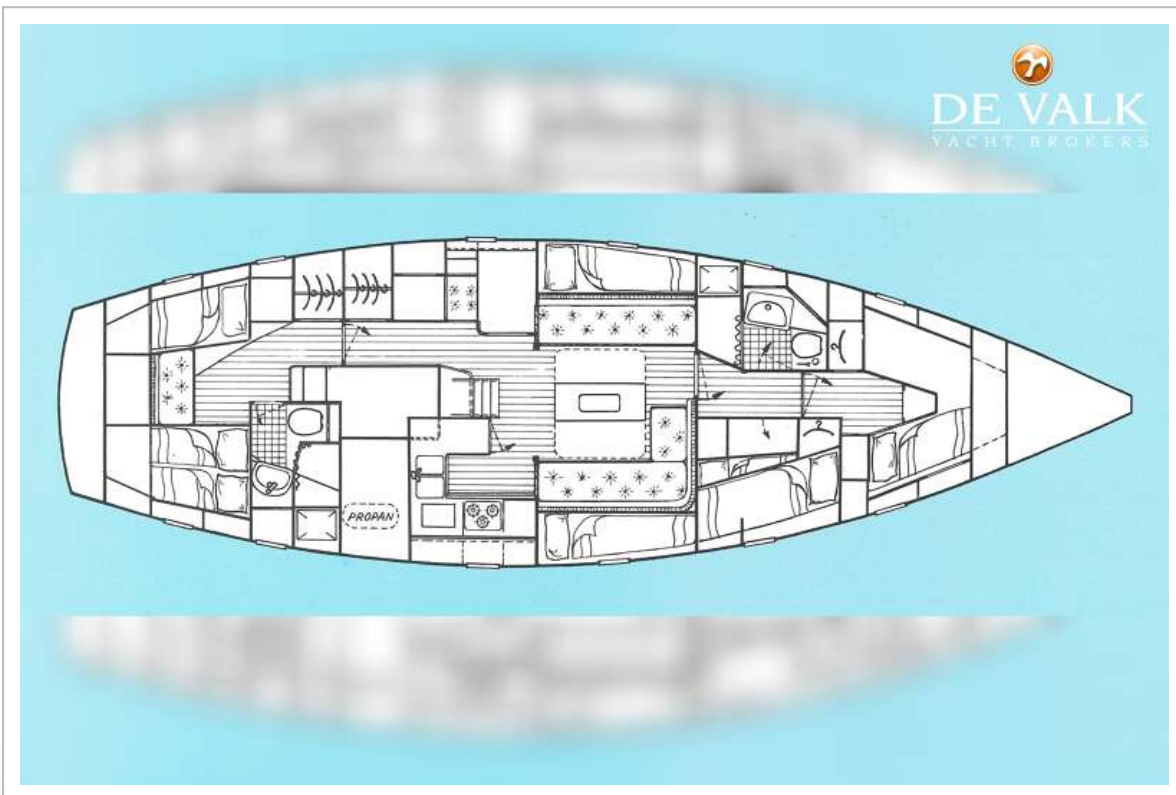
# HALLBERG RASSY 49 KETCH



# HALLBERG RASSY 49 KETCH

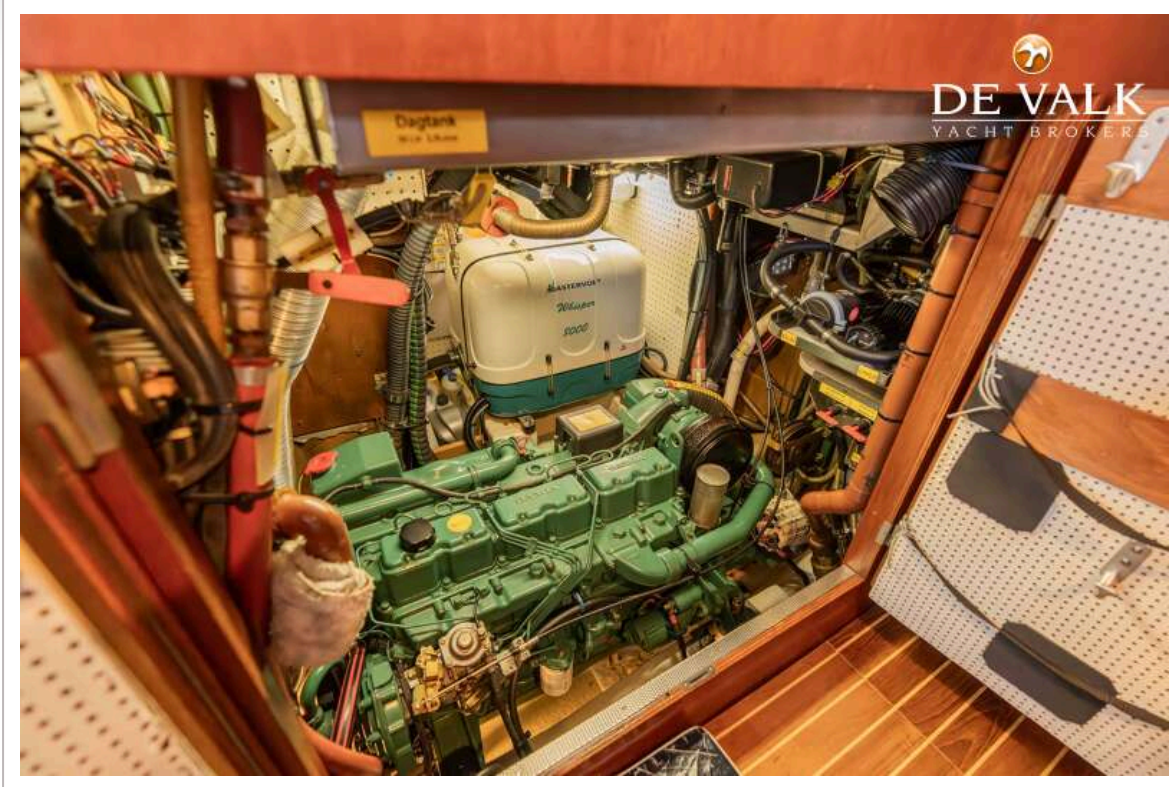


# HALLBERG RASSY 49 KETCH

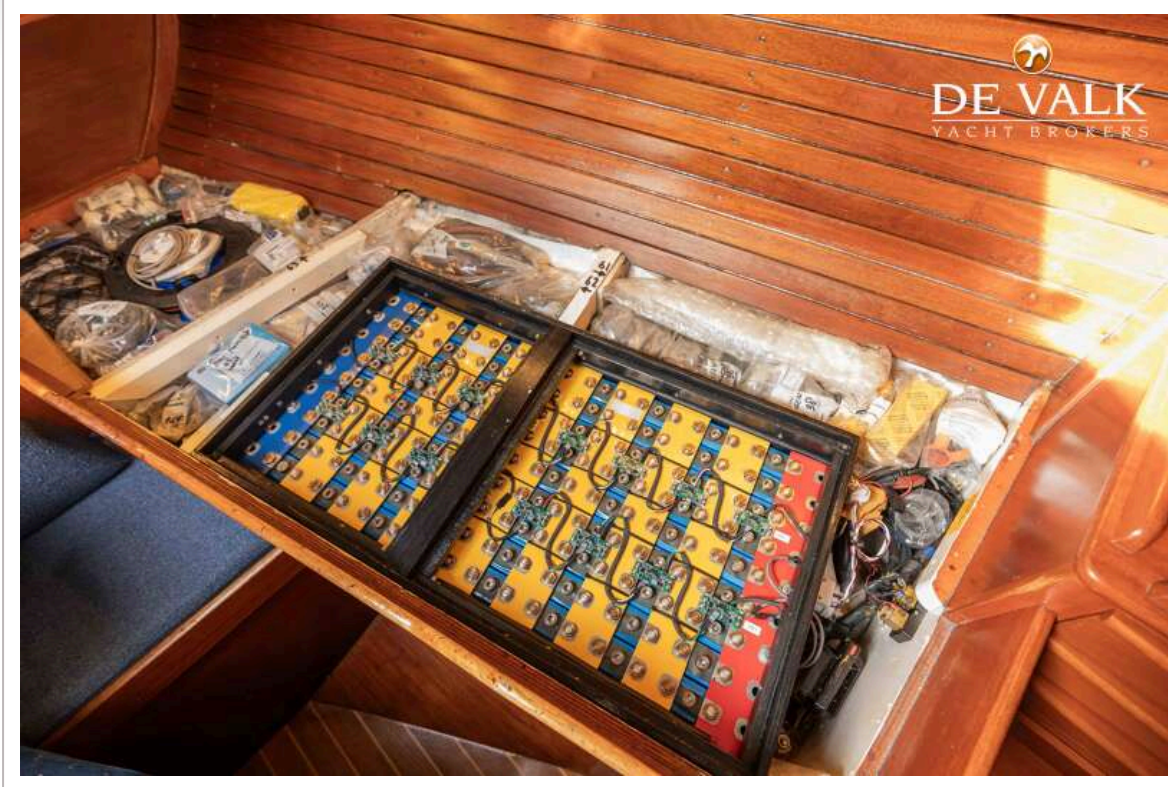




# HALLBERG RASSY 49 KETCH



# HALLBERG RASSY 49 KETCH



# HALLBERG RASSY 49 KETCH

